

## REED "MULTI" M40 CONCRETE PUMP

### SECTION 2:

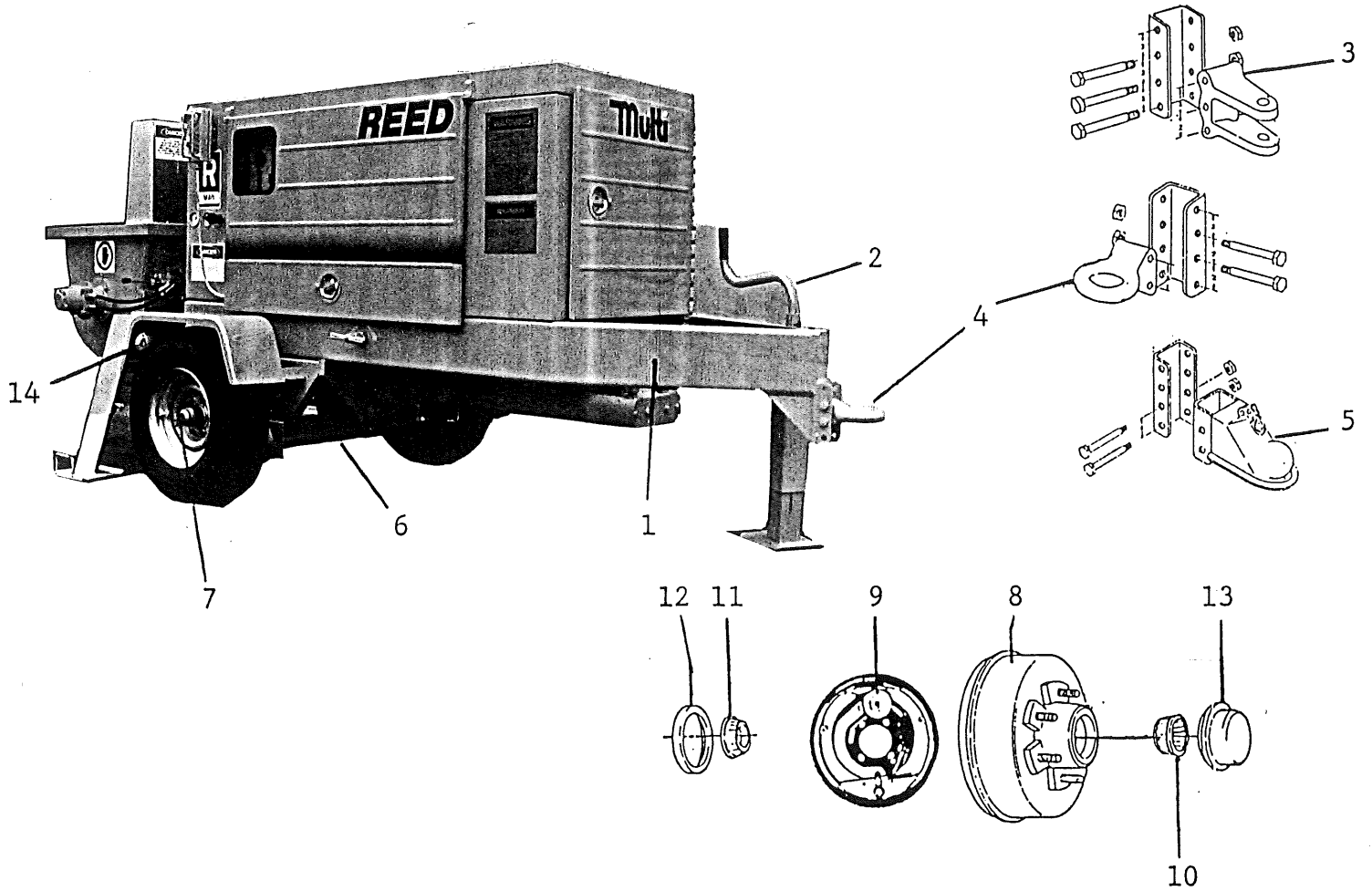
#### PARTS INFORMATION, WARRANTY & SERVICE

---

##### PAGE

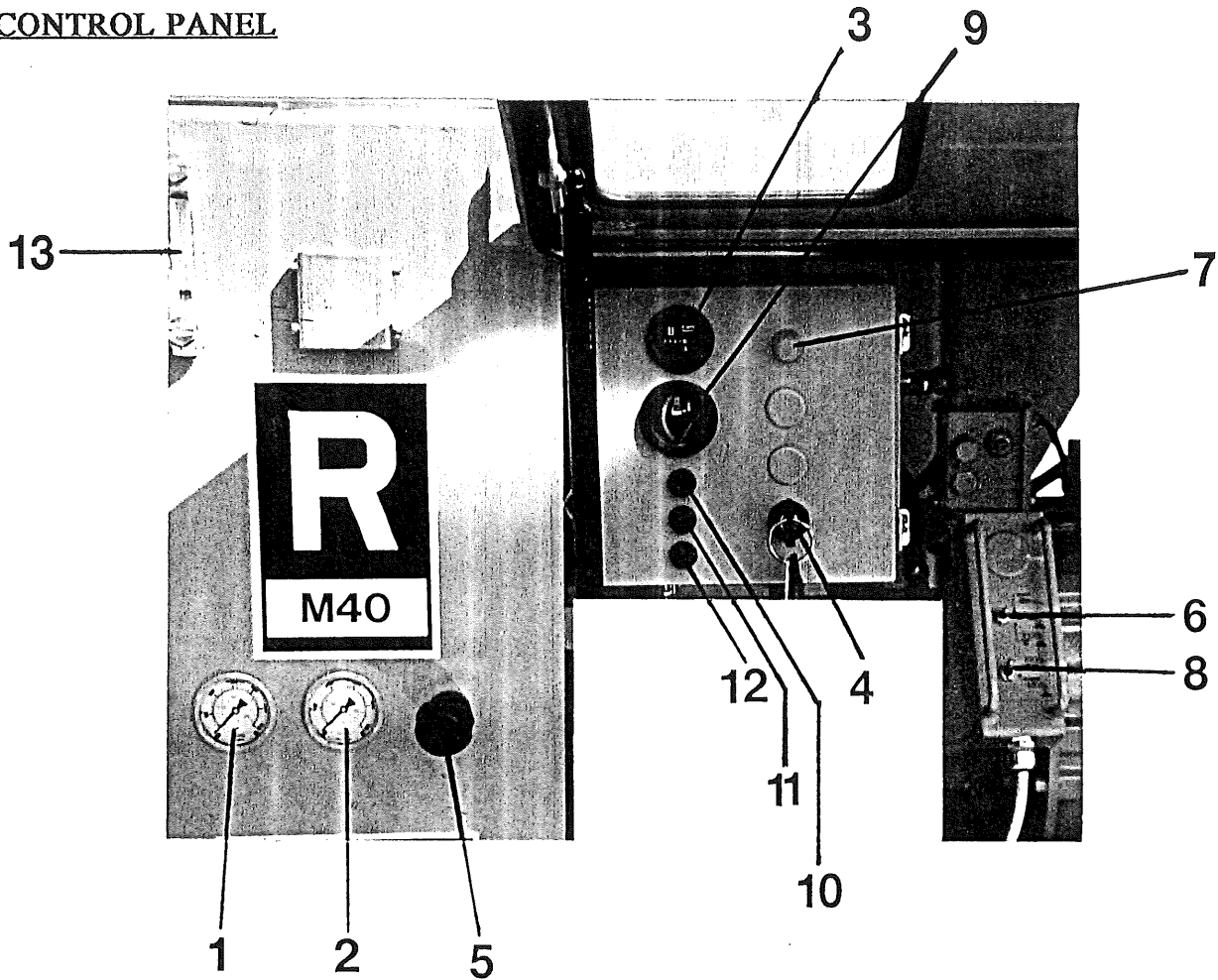
1	FRAME & AXLE ASSEMBLY
2	CONTROL PANEL
3	POWER TRAIN ASSEMBLY
4	HYDRAULIC PUMP AREA
5	FLUSHBOX AREA
6	REAR HYDRAULIC TANK AREA
7	CONCRETE & HYDRAULIC CYLINDERS
8	SWING TUBE ASSEMBLY OUTLET HOPPER
9	AUGER ASSEMBLY

FRAME & AXLE ASSEMBLY



<u>ITEM</u>	<u>DESCRIPTION</u>	<u>PART#</u>	<u>QTY/MCH</u>
1	FRAME WELDMENT	75913	1
2	TOP WIND JACK	75711	1
3	CLEVIS	71050	1
4	LUNETTE EYE 3"	71051	1
5	COUPLER 2-5/16"	71099	1
6	AXLE	73046	1
7	WHEEL & TIRE	73212	2
8	BRAKE DRUM	73211	2
9	ELECTRIC BRAKE	71056	2
10	OUTER BEARING	71093	2
11	INNER BEARING	71094	2
12	GREASE SEAL	71095	2
13	DUST CUP	71096	2
14	TAIL LIGHT	72948	2

CONTROL PANEL



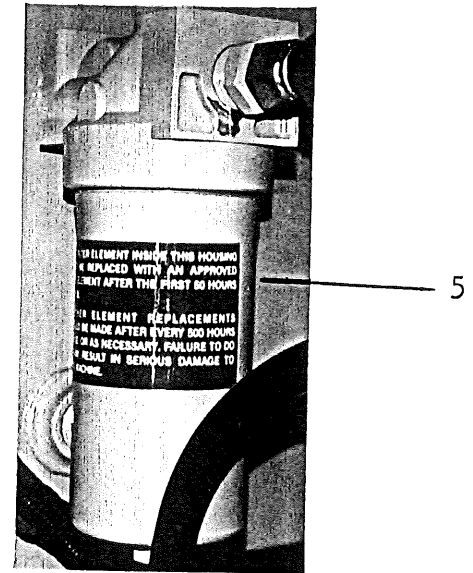
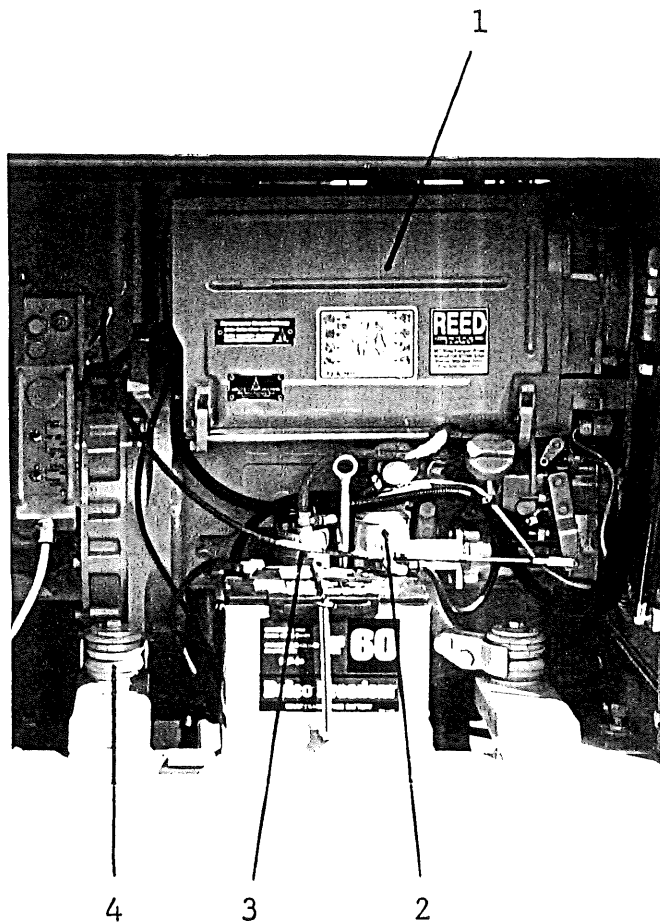
ITEM DESCRIPTION

PART#

QTY/MCH

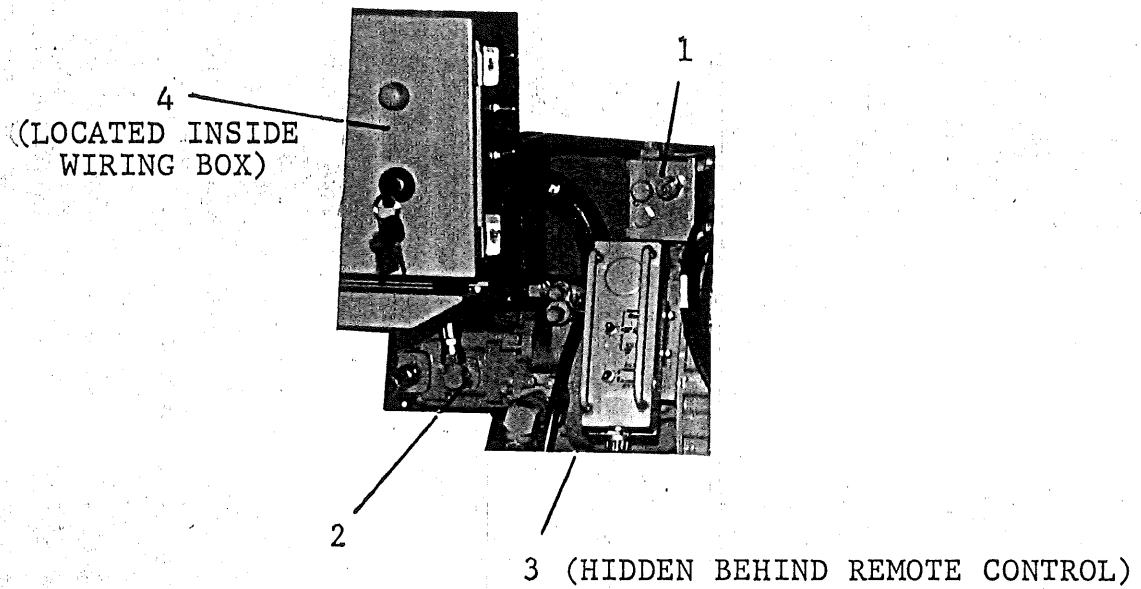
1	PRESSURE GAUGE MAIN CIRCUIT 5000 PSI	74562	1
2	PRESSURE GAUGE SWING CIRCUIT 3000 PSI	70366	1
3	HOURMETER	74240	1
4	IGNITION SWITCH	71154	1
5	THROTTLE CABLE	72810	1
6	ON-OFF-ON SWITCH	72965	1
7	SWITCH COLD START	72863	1
8	ON-OFF SWITCH	72963	1
9	TEMP GAUGE OIL	72864	1
10	RED LIGHT	73775	1
11	GREEN LIGHT	73776	1
12	AMBER LIGHT	73777	1
13	HYDRAULIC OIL GAUGE	74509	1

POWER TRAIN ASSEMBLY



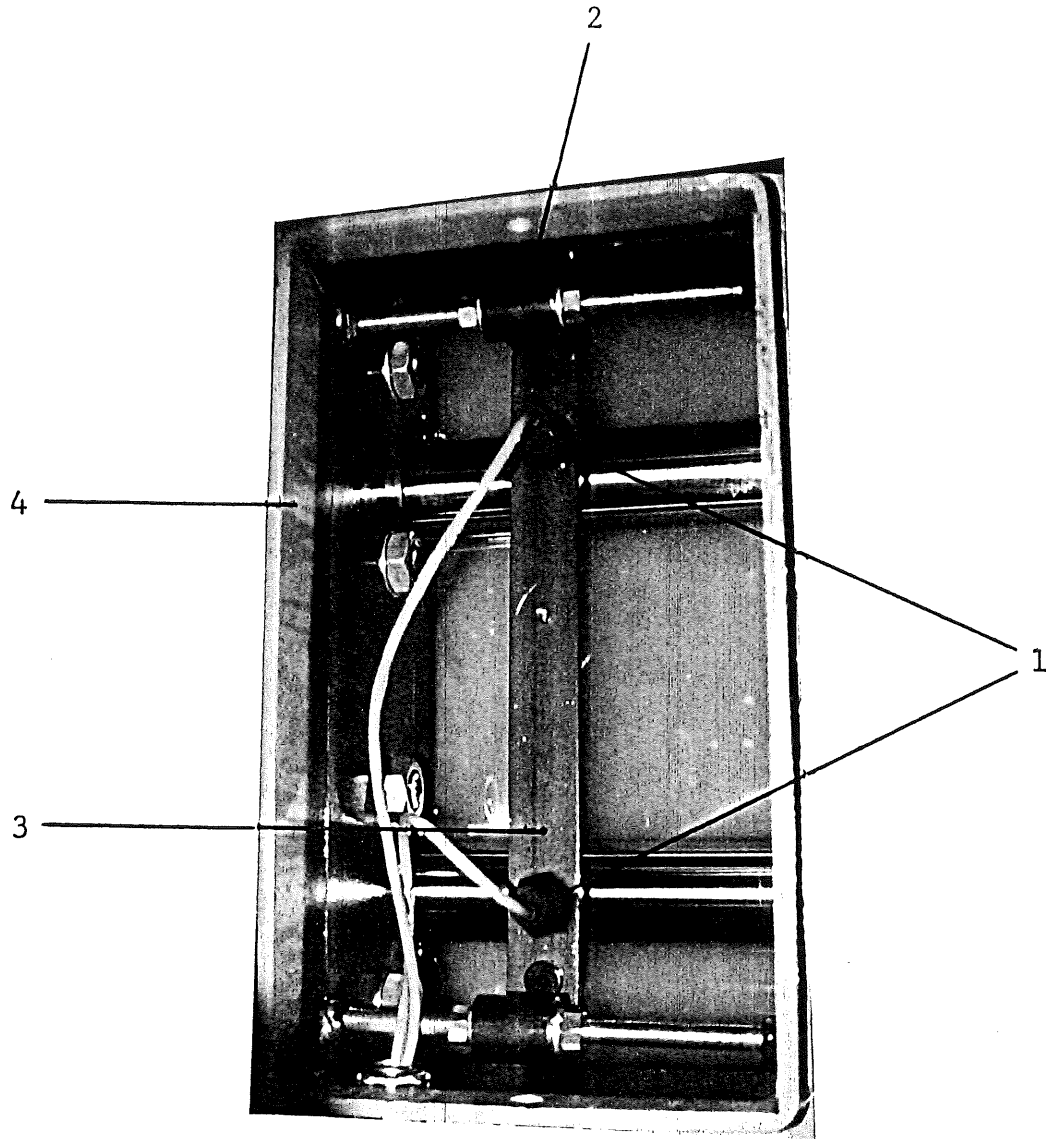
<u>ITEM</u>	<u>DESCRIPTION</u>	<u>PART #</u>	<u>QTY/MCH</u>
1	ENGINE 4 CYLINDER (TURBO)	73466	1
2	FUEL FILTER	72960	1
3	OIL FILTER	72909	1
4	ENGINE MOUNT KIT	74231	2
5	HYDRAULIC FILTER ELEMENT	73303	1
6	FLOW CONTROL VALVE	74232	1

## HYDRAULIC PUMP AREA



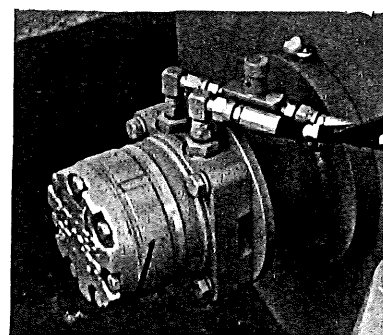
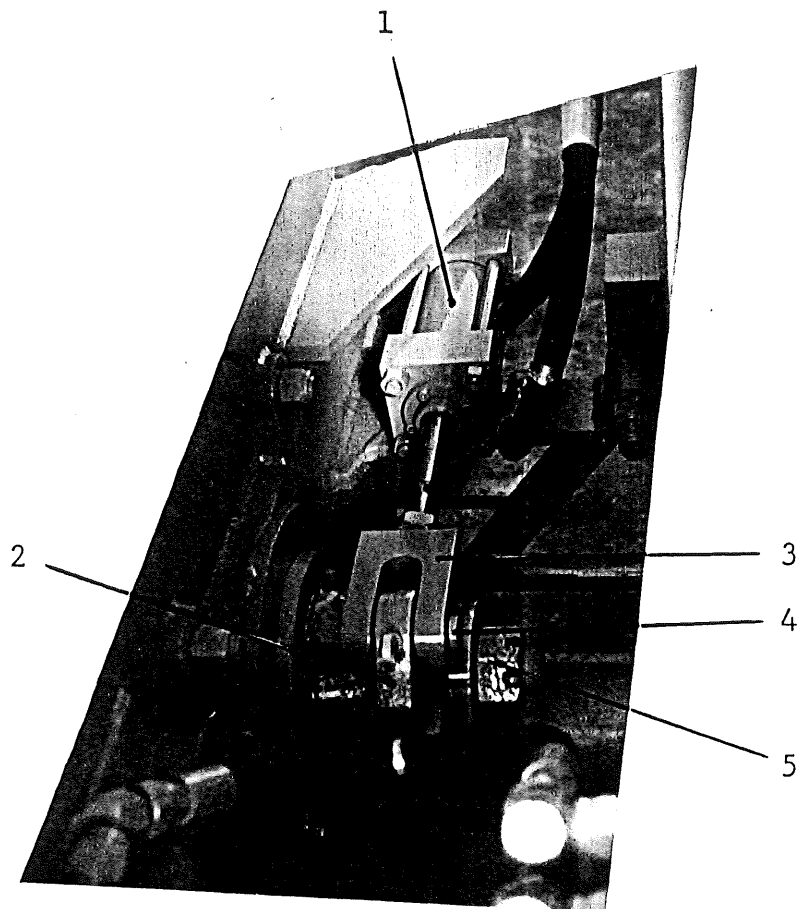
<u>ITEM</u>	<u>DESCRIPTION</u>	<u>PART#</u>	<u>QTY/MCH</u>
1	UNLOADER MANIFOLD BLOCK	72803	1
2	AUXILIARY PUMP	73156	1
3	MAIN HYDRAULIC PUMP	74918	1
4	BLACK BOX	70752	1

FLUSHBOX AREA



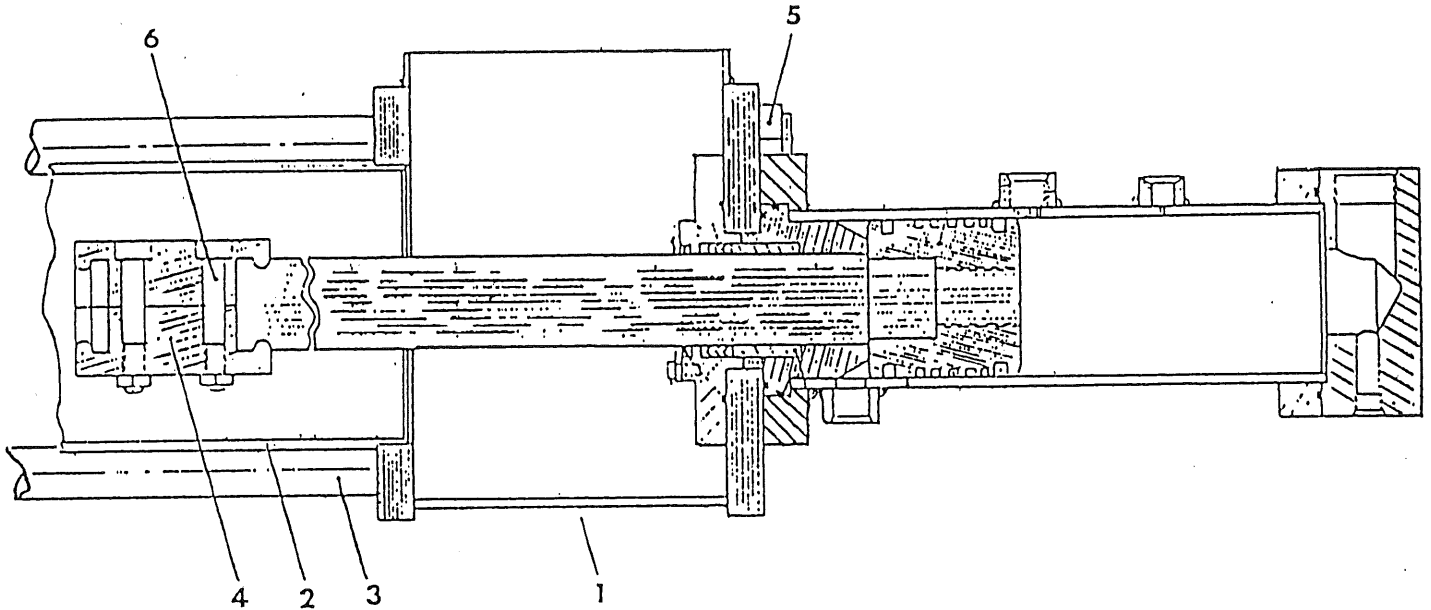
<u>ITEM</u>	<u>DESCRIPTION</u>	<u>PART#</u>	<u>QTY/MCH</u>
1	PROXIMITY SENSOR	72961	2
2	MOUNTING ANGLE	72940	2
3	MOUNTING BAR	72941	1
4	FLUSHBOX	70300	1

REAR HYDRAULIC TANK AREA



<u>ITEM</u>	<u>DESCRIPTION</u>	<u>PART#</u>	<u>QTY/MCH</u>
1	SWING TUBE HYDRAULIC CYLINDER	74531	1
2	BELL CRANK	70127	1
3	CLEVIS	70142	1
4	CLEVIS PIN	70143	1
5	CASTLE NUT	70825	1
6	REMIXER MOTOR	73750	1

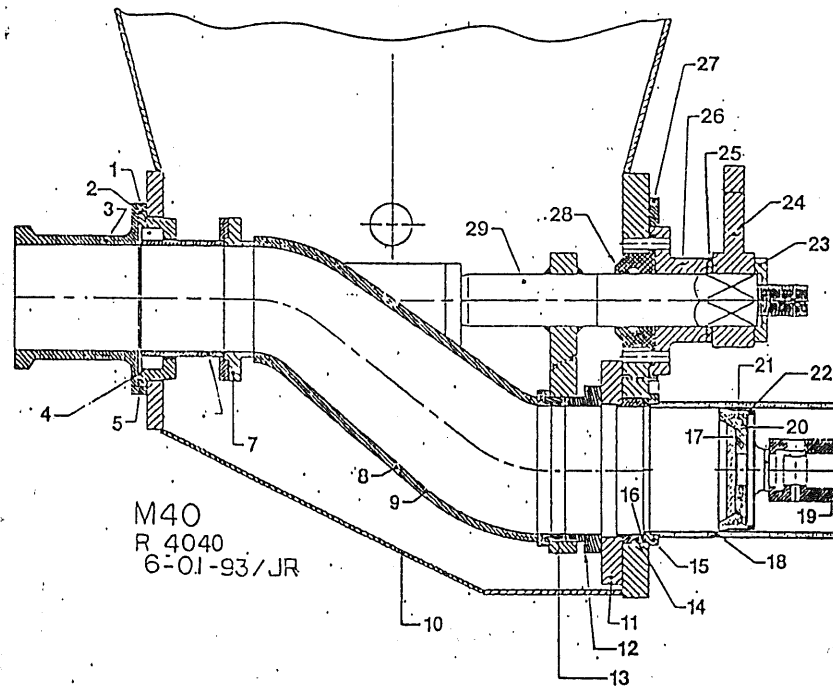
CONCRETE & HYDRAULIC CYLINDERS



<u>ITEM</u>	<u>DESCRIPTION</u>	<u>PART#</u>	<u>QTY/MCH</u>
1	FLUSHBOX	70300	1
2	CONCRETE CYLINDERS	70067	2
3	TIE ROD CONCRETE CYLINDER	70315	4
4	COUPLING ASSEMBLY MATCHED PAIR	70077	2
5	NUT 1-1/4"-12 (CONCRETE TIE ROD)		4
6	SOCKET HEAD CAP SCREW (1-1/2"-2- X 3")		

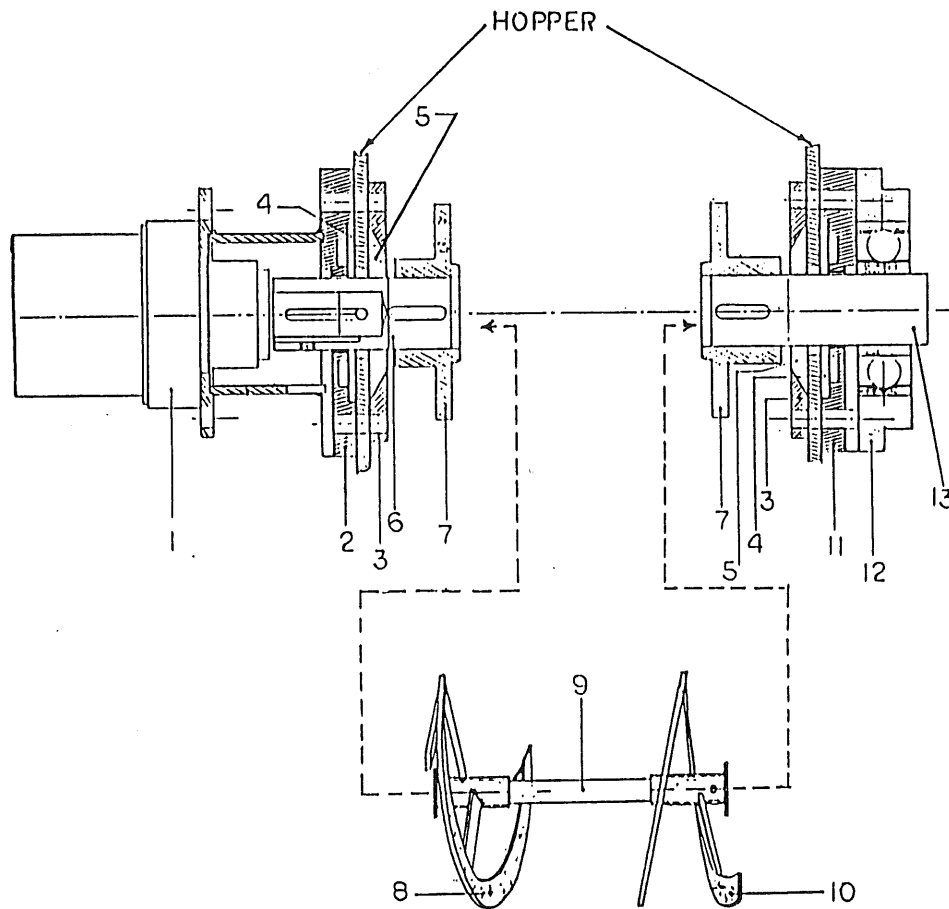


# SWING TUBE ASSEMBLY OUTLET HOPPER



<u>ITEM</u>	<u>DESCRIPTION</u>	<u>PART#</u>	<u>QTY/MCH</u>
1	OUTLET SEAL	70049	1
2	O-RING #261	75379	1
3	5" OUTLET WELDMENT	73093	1
4	O-RING #262	74013	1
5	HOUSING -OUTLET SEAL	70123	1
6	CHROMED OUTLET WELDMENT	70042	1
7	FLANGE -SWING TUBE	70120	1
8	SWING TUBE CASTING	72890	1
9	SWING TUBE (SHORT CUTTING TYPE)	73190	1
10	M40 HOPPER SUB WELDMENT	74339	1
11	HEAT TREATED WEARPLATE	70348	1
12	WEAR RING	73407	1
13	THRUST RING	73406	1
14	ANTI-CHIP RING	70047	2
15	ADAPTOR RING 7" / 6"	70318	2
16	O-RING FOR OUTLET SEAL HOUSING	74013	1
17	PISTON PLATE	70057	2
18	CONCRETE CYLINDER 6" X 36"	70067	2
19	PISTON COUPLING	70077	2
20	CONCRETE PISTON ADAPTER	70076	2
21	6" PISTON CUP	70048	2
22	O-RING #433 6"	74001	2
23	NUT SPACER	70125	1
24	BELL CRANK, ONE BOLT	70127	1
25	THRUST WASHER	70141	1
26	FLANGED BEARING	70124	1
27	LOCATOR RING ADAPTER	70154	1
28	FLANGED BEARING SEAL	73564	1
29	SWING TUBE SHAFT	70117	1

AUGER ASSEMBLY



<u>ITEM</u>	<u>DESCRIPTION</u>	<u>PART#</u>	<u>QTY/MCH</u>
1	REMIXER MOTOR	73750	1
2	REMIX HOUSING WELDMENT	73261	1
3	FLANGE FOR HOPPER SEAL	75826	2
4	REMIX SEAL	75244	2
5	REMIX SEAL	75825	2
6	STUB SHAFT	73257	1
7	COUPLING - HALF MALE	73258	2
8	AUGER WELDMENT	71273	1
9	REMIX SHAFT	71405	1
10	AUGER WELDMENT	71275	1
11	PACKING SEAL HOUSING	75208	1
12	AUGER FLANGE BEARING	75193	1
13	STUB SHAFT	73256	1