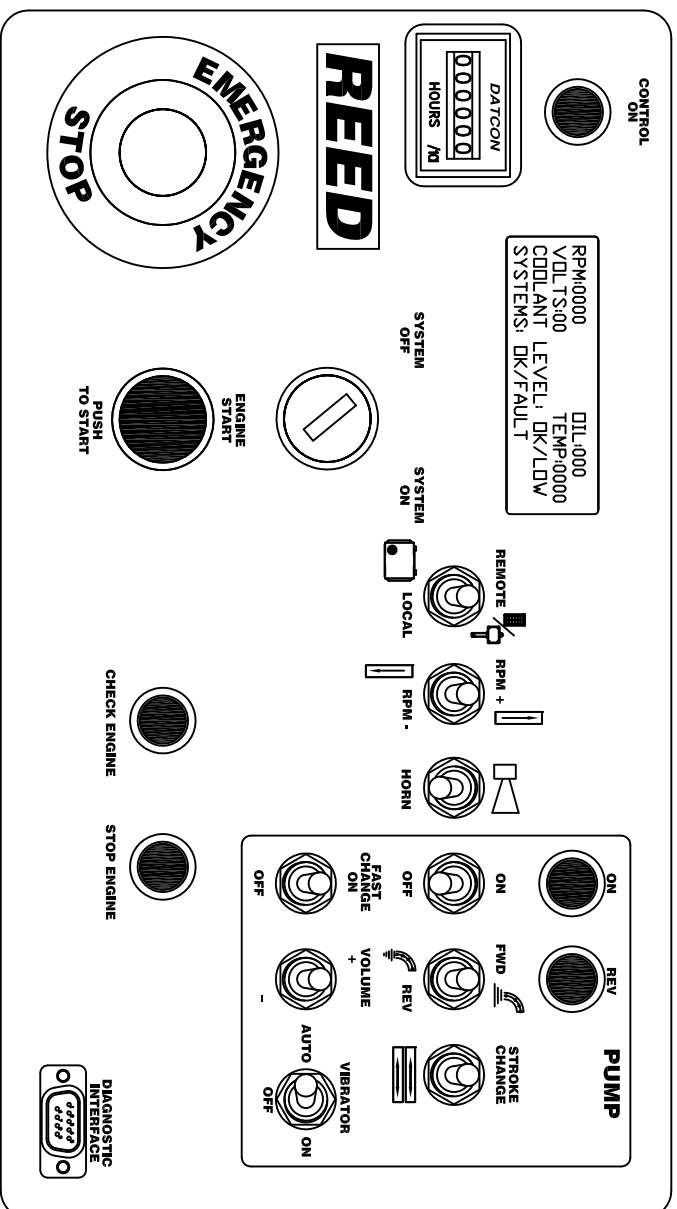


NOTES:  
1. ALL CONNECTIONS SOLDERED AND INSULATED WITH HEAT SHRINK TUBING.

<b>REED</b>		ELECTRICAL		C-SERIES	
		WIRING-HARNESS		SCMTC	
DRAWING NO.	REV	DATE			
86532	C	3/10/01			
			C-SERIES		
			FIGURE01		



CONTROL PANEL DETAIL--SCALE 2X

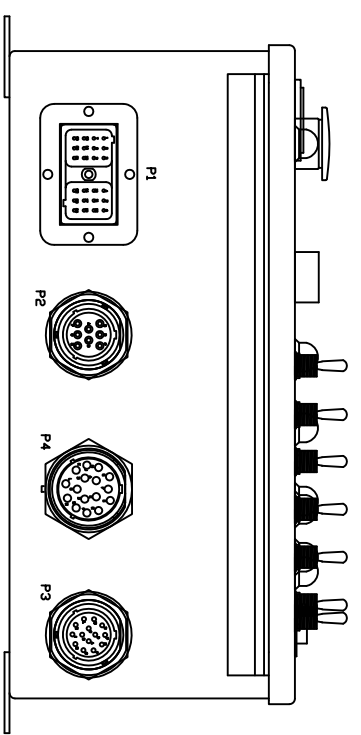
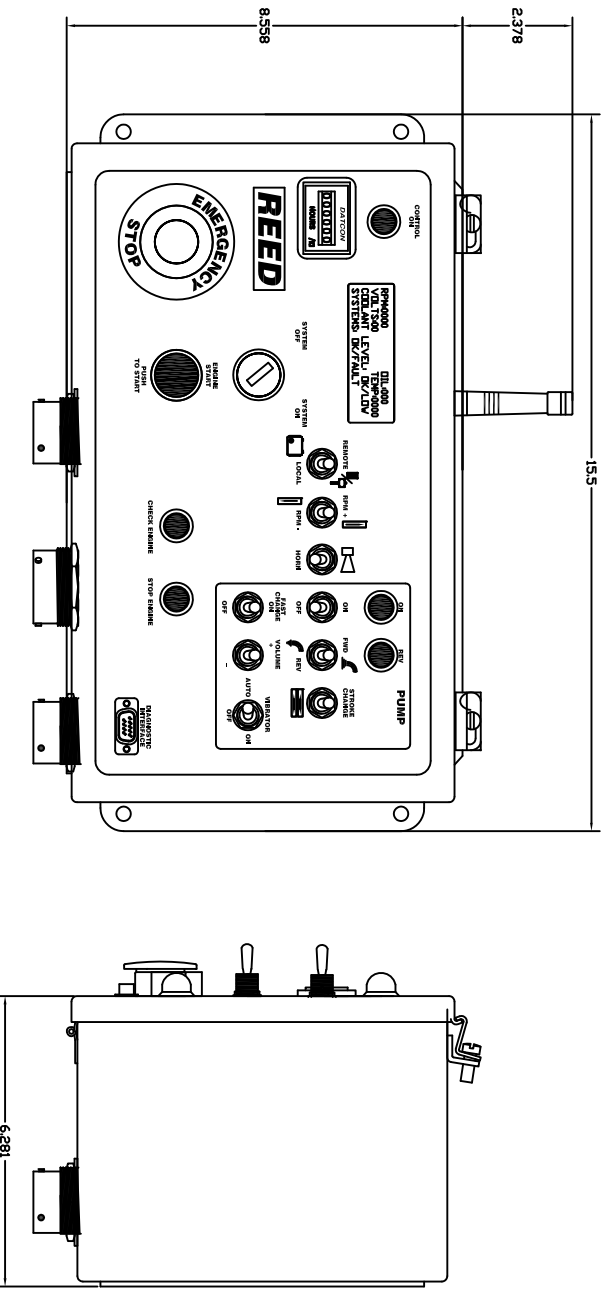
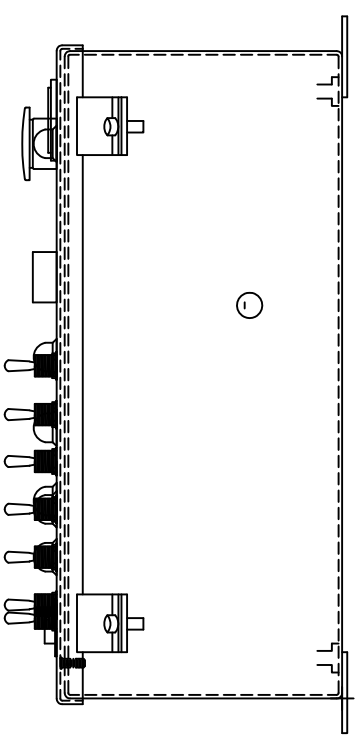
CONNECTORS -- DATA

CONNECTOR P1: 24 PIN DEUTSCH DRC12-24PA		CONNECTOR P2: 8 PIN DEUTSCH HD34-18-08PN	
PIN#	DESCRIPTION	PIN#	DESCRIPTION
1	IGNITION POWER OUT	A	BATTERY POWER (12 VDC)
2	STARTER RELAY OUT	B	BATTERY GROUND
3	FUEL PUMP OUTPUT	C	RPM + OUTPUT
4	SAFETY DUMP 1 OUTPUT	D	RPM - OUTPUT
5	SAFETY DUMP 2 OUTPUT	E	VOLUME + OUTPUT
6	PUMP COIL A OUTPUT	F	VOLUME - OUTPUT
7	PUMP COIL B OUTPUT	G	HORN OUTPUT
8	S-TUBE A OUTPUT	H	VIBRATOR
9	S-TUBE B OUTPUT		
10	REVERSE VALVE		
11	FAST CHANGE COIL		
12	PROX SW POWER OUT		
13	PROX SW A INPUT		
14	PROX SW B INPUT		
15	PROX SW GROUND		
16	CAN HIGH		
17	CAN LOW		
18	NOT CONNECTED		
19	VOLUME PWM OUTPUT		
20	GRATE SENSOR POWER		
21	GRATE SENSOR INPUT		
22	ECM RELAY INPUT		
23	GROUND		
24	GROUND		

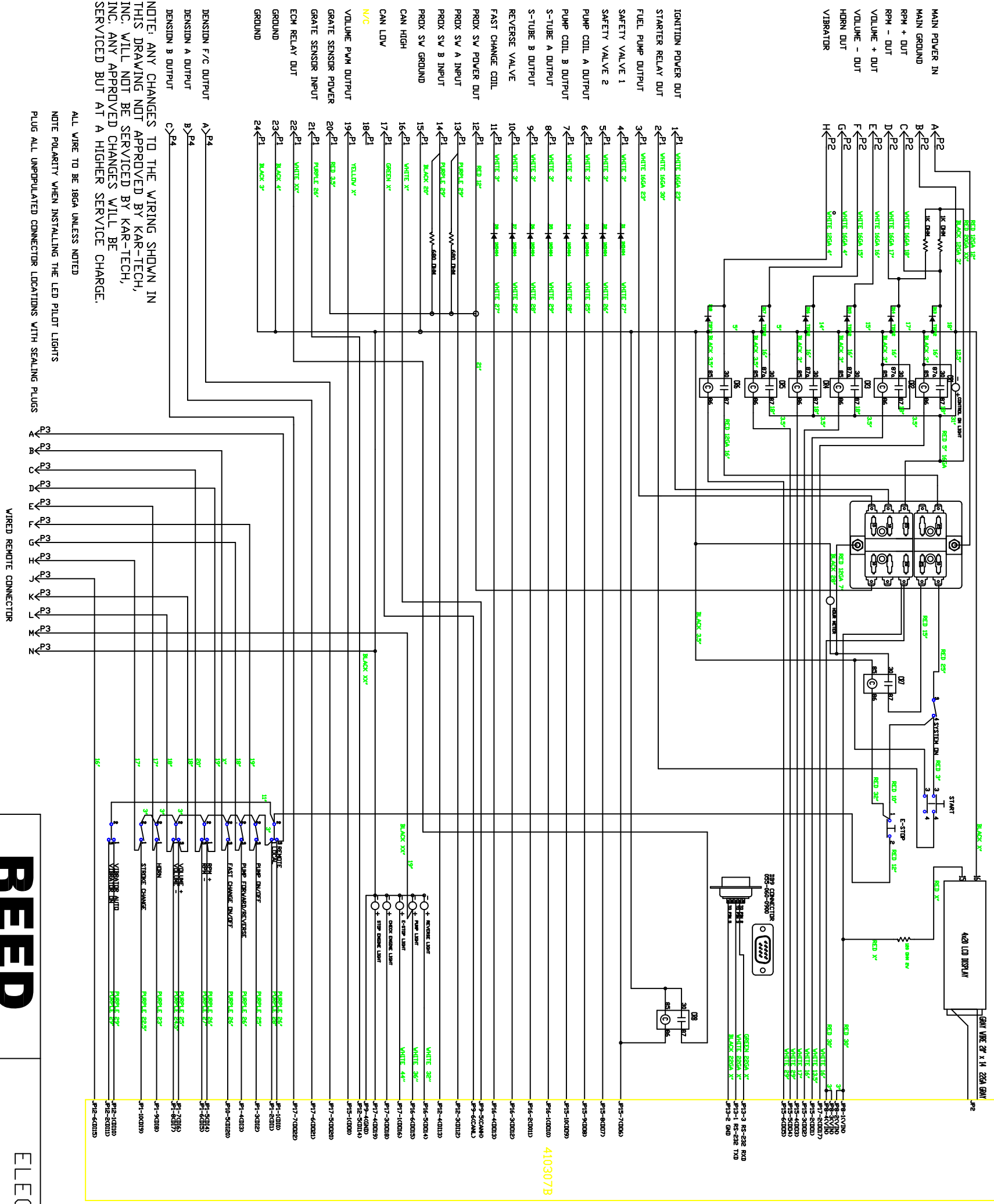
CONNECTOR P4: 16 PIN DEUTSCH HD34-24-16SN

P1 = DRC12-24PA - MOST INPUT AND OUTPUT FUNCTIONS  
 P2 = HD34-18-08PN - POWER AND GROUND INPUT PLUS HIGH CURRENT OUTPUTS (VIBRATOR, RPM, VOLUME)  
 P3 = HD34-18-14PN - WIRED REMOTE PENDANT CONNECTION  
 P4 = HD34-24-16SN AUXILIARY CONNECTOR

ALL CONNECTORS MADE BY DEUTSCH JPd  
 ALL CONNECTORS USE STANDARD DEUTSCH 16-18GA SOCKETS  
 EXCEPT P2 WHICH USES STANDARD 12GA SOCKETS



		MAIN-CONTROL-BOX		C-SERIES	
		DATA		SCMTC	
DRAWING NO.	REV	DATE			
87346-2	E	7/23/07			
			C50SS	FIGURE03	

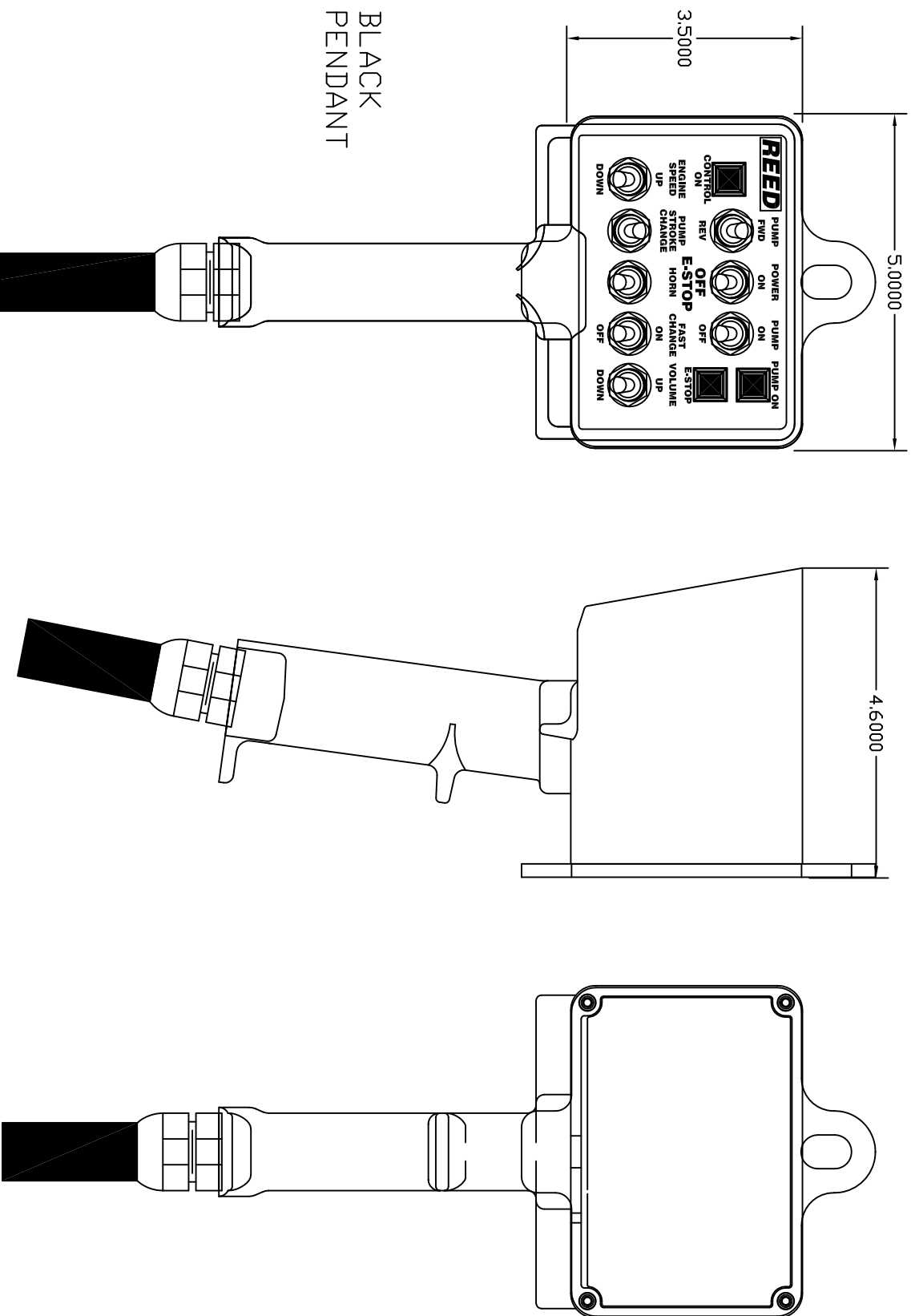


NOTE: WIRING BETWEEN LCD BOARD AND JP4 IS ONE-TO-ONE, I.E., JP24 PIN 1 CONNECTS TO LCD BOARD PIN 1, PIN 2 CONNECTS TO PIN 2, ETC.

DENSON F/C OUTPUT  
 DENSON A OUTPUT  
 DENSON B OUTPUT  
 NOTE: ANY CHANGES TO THE WIRING SHOWN IN THIS DRAWING NOT APPROVED BY KAR-TECH, INC. WILL NOT BE SERVICED BY KAR-TECH, INC. ANY APPROVED CHANGES WILL BE SERVICED BUT AT A HIGHER SERVICE CHARGE.

ALL WIRE TO BE 18GA UNLESS NOTED  
 NOTE POLARITY WHEN INSTALLING THE LED PILOT LIGHTS  
 PLUG ALL UNPOPULATED CONNECTOR LOCATIONS WITH SEALING PLUGS

<b>REED</b>	DRAWING NO.	REV	DATE
	87346-2	E	7/23/07
ELECTRICAL SCHEMATIC			C-SERIES
SCMTC			FIGURE03



BLACK  
PENDANT



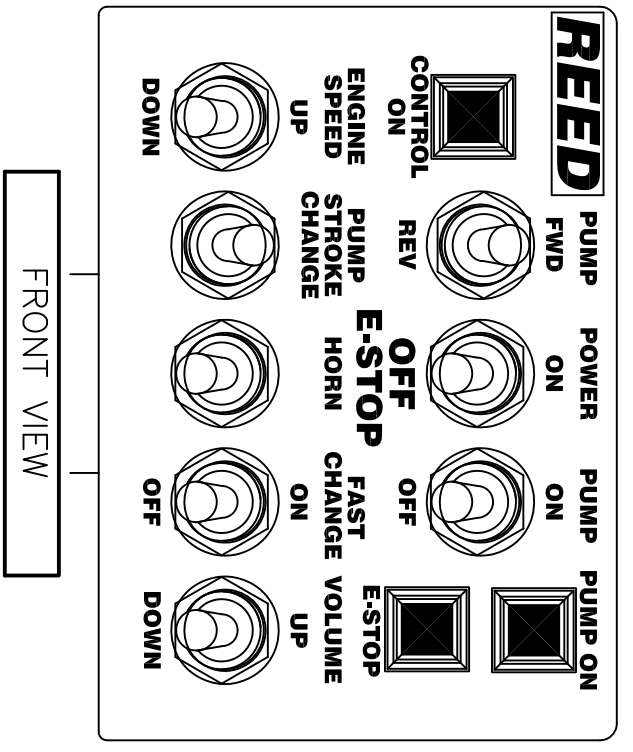
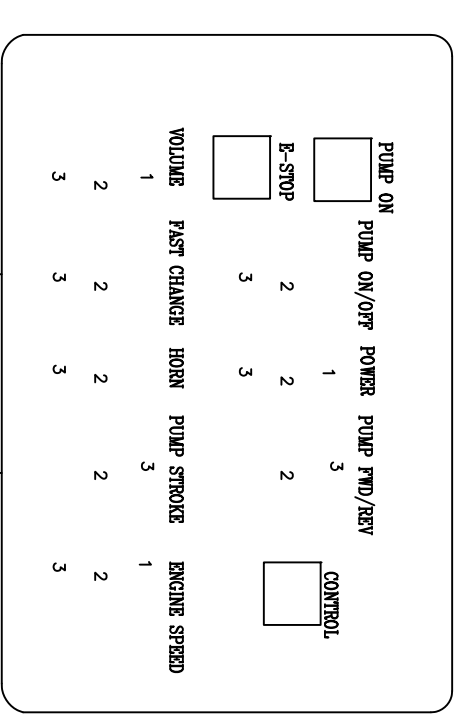
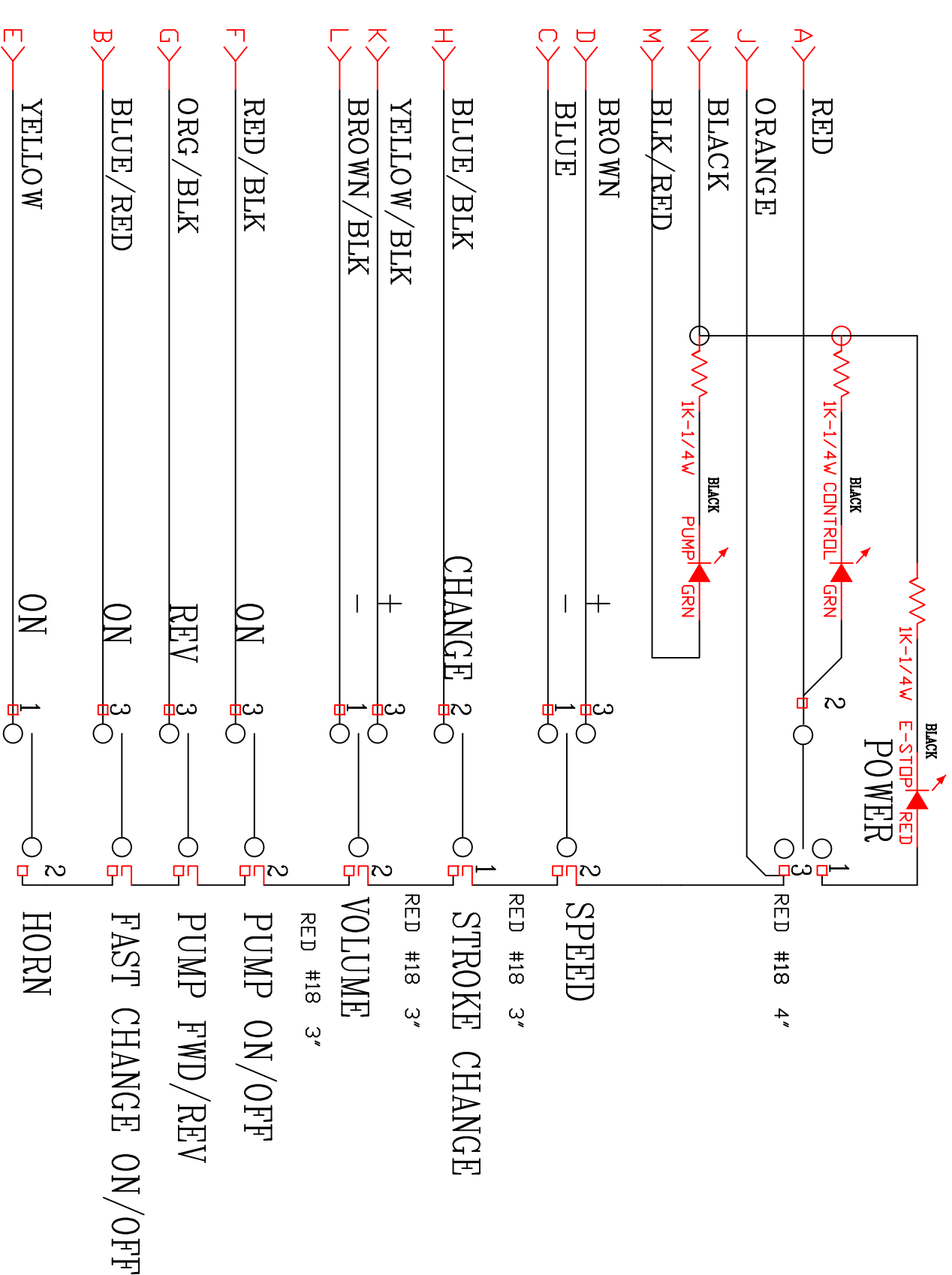
VENDOR: KAR-TECH  
VENDOR PN: 41-030-3-B-2

CONNECTOR - DATA	
CONNECTOR: 14 PIN DEUTSCH HD36-18-14SN	
PIN#	DESCRIPTION
A	REMOTE POWER
B	FAST CHANGE DN/OFF OUTPUT
C	ENGINE RPM DECREASE OUTPUT
D	ENGINE RPM INCREASE OUTPUT
E	HORN OUTPUT
F	PUMP DN/OFF OUTPUT
G	PUMP FWD/REV OUTPUT
H	PUMP STROKE CHANGE OUTPUT
J	REMOTE POWER RETURN
K	VOLUME + OUTPUT
L	VOLUME - OUTPUT
M	PUMP ON INDICATOR LIGHT
N	INDICATOR LIGHT GROUND

<b>REED</b>		PENDANT-CONTROL-BOX		C-SERIES	
		DATA		SCMTC	
DRAWING NO. 87347-1	REV B	DATE 6/25/07	C50SS		FIGURE04

TRAILER MOUNTED PUMP MODEL C50SS  
PENDANT CONTROL BOX  
ELECTRICAL SCHEMATIC

SCMTC  
PAGE 06

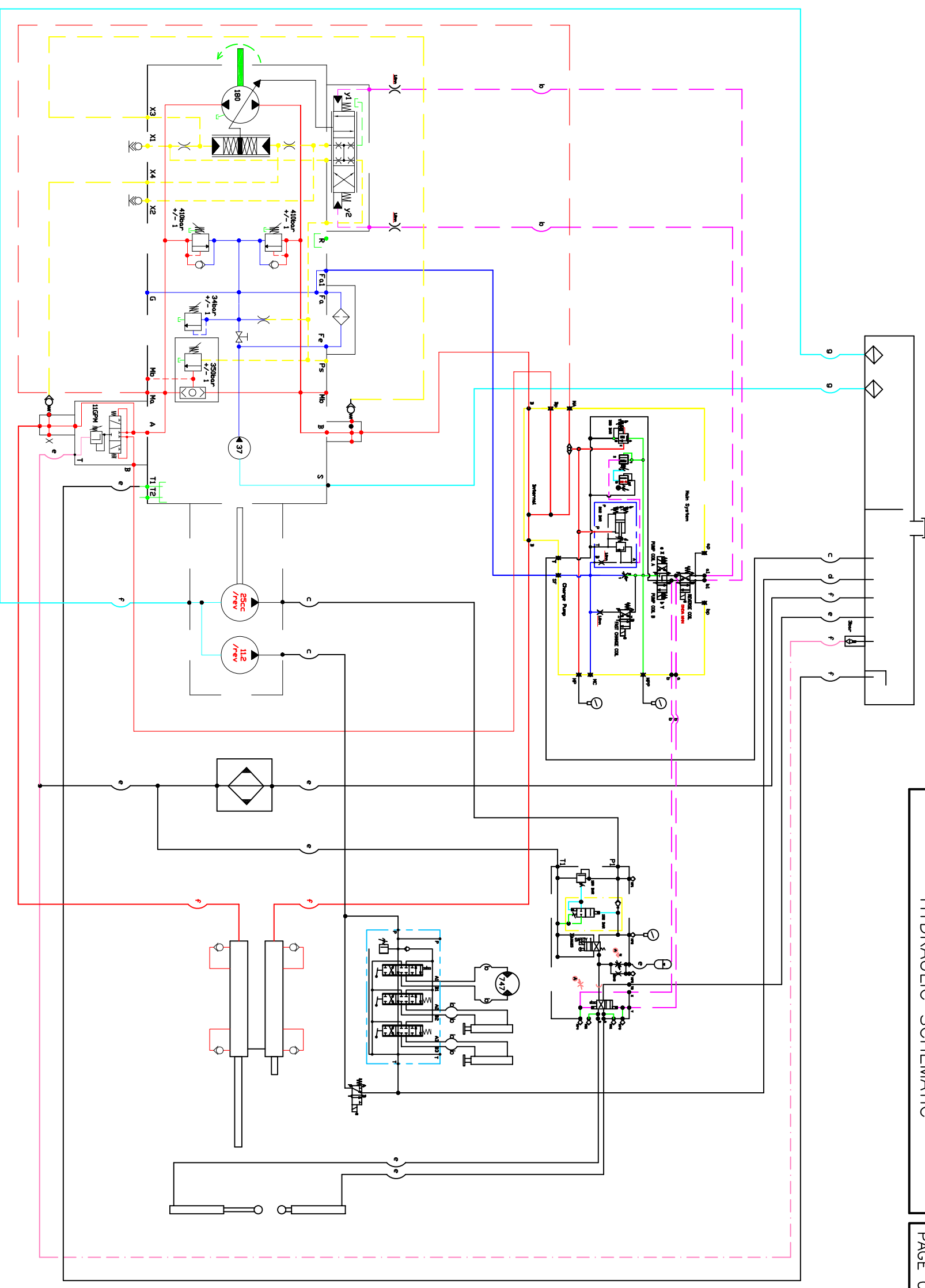


50 FEET 16 COND.  
P/N 020-050-1618  
SO THROUGH  
COMP. FITTING.  
CUT JACKET TO 6" INSIDE THE BOX  
CUT JACKET TO 1.5" ON THE OPPOSITE END  
SHRINK WRAP CONNECTOR TO CABLE

PIGGY BACK PUSHON  
STRAIGHT PUSHON

<b>REED</b>	DRAWING NO.	REV	DATE	PENDANT-CONTROL-BOX ELECTRICAL-SCHEMATIC	C-SERIES SCMTC
	87347-1	B	6/25/07		

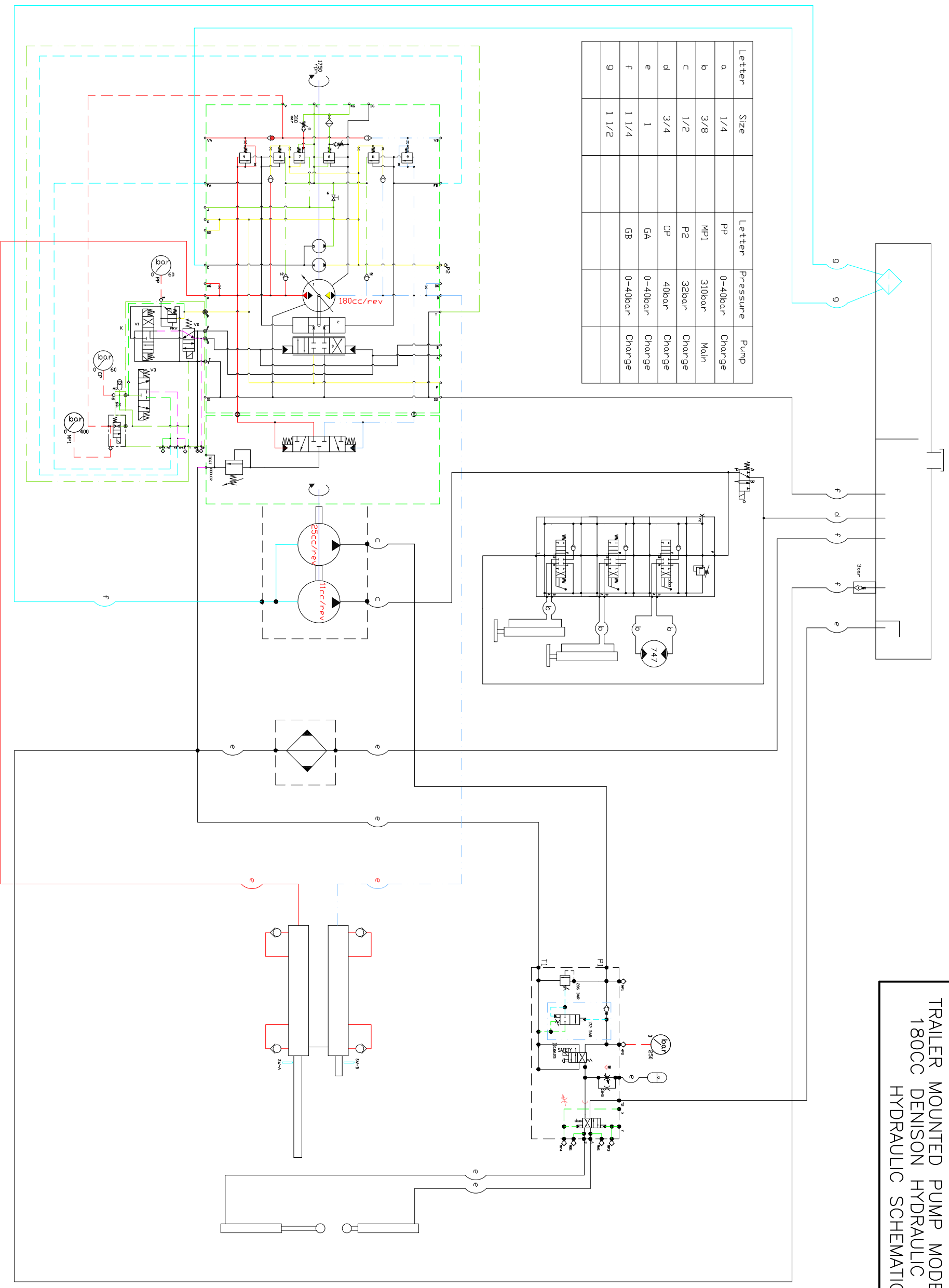
VENDOR: KAR-TECH  
VENDOR PN: 41-030-4-B-8  
WIRED REMOTE PENDANT WIRING DIAGRAM



Letter	Size	Letter	Pressure	Pump
a	1/4	PP	0-19bar	Charge
b	3/8	MP1	350bar	Main
c	1/2	P2	32bar	Charge
d	3/4	CP	32bar	Charge
e	1	X1	0-30bar	Charge
f	1 1/4	X2	0-30bar	Charge
g	1 1/2			

SCHEMATIC-UPDATED BY: DREMUS 1/11/2007

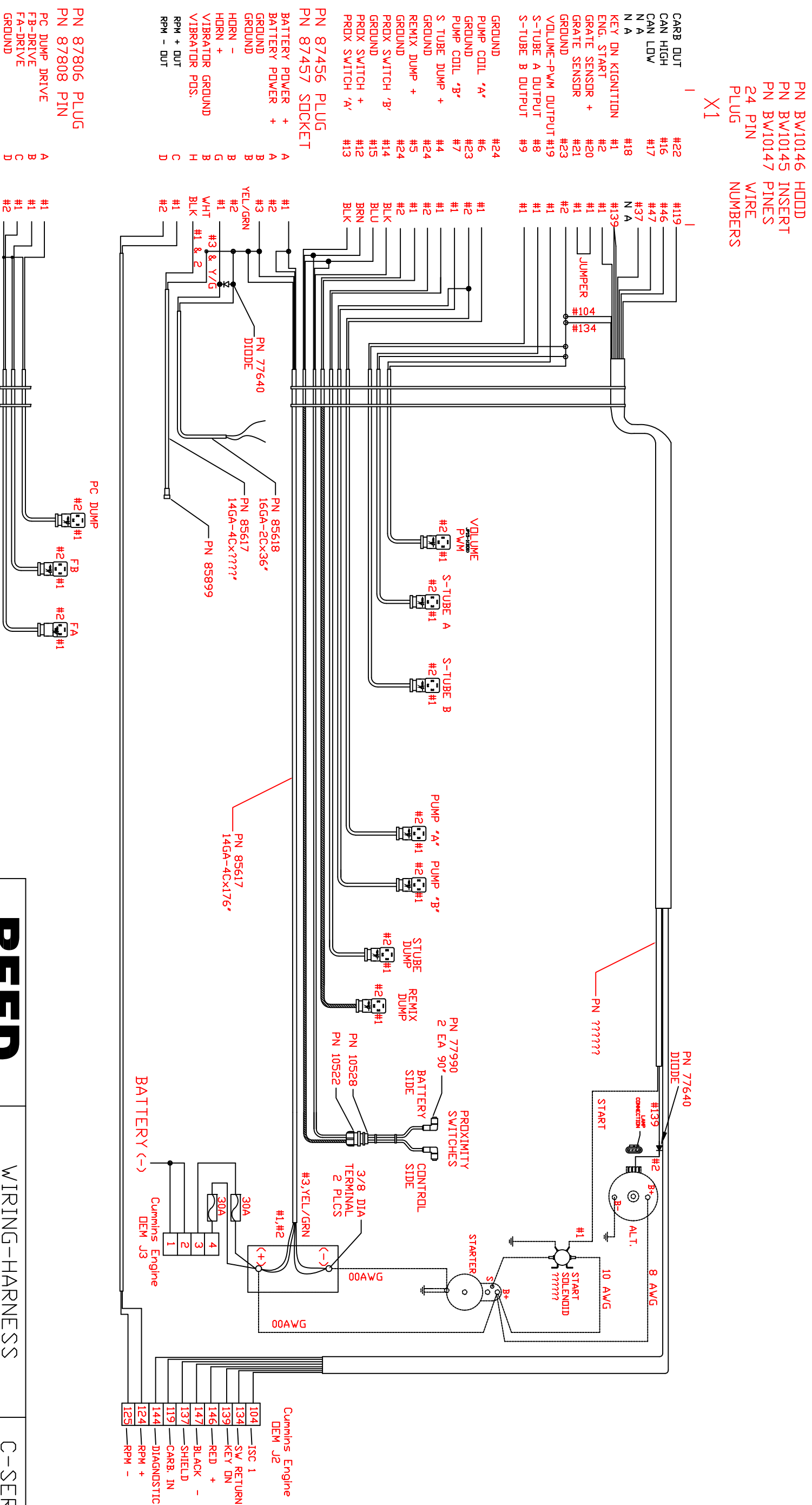
<b>REED</b>	DRAWING NO.	REV	DATE	HYDRAULIC SCHEMATIC C50SS	C-SERIES SCMTC FIGURE06
	87426-1	E	7/13/05		



<b>REED</b>	DRAWING NO.	REV	DATE	HYDRAULIC SCHEMATIC	C-SERIES
	87426-2	-	02/28/08		
					FIGURE-06

TRAILER MOUNTED PUMP MODEL C50SS  
 WIRING HARNESS  
 HYDRAULIC CYCLING - DENISON PUMP

SCMTC  
 PAGE 03



<b>REED</b>		WIRING-HARNESS		C-SERIES	
		HYD-CYCLING-DENISON		SCMTC	
DRAWING NO.	REV	DATE			
87871	C	2/11/08			
C50SS-CUMMINS			FIGURE02A		



# TRANSMITTER -TEACH/RESET PROCEDURES

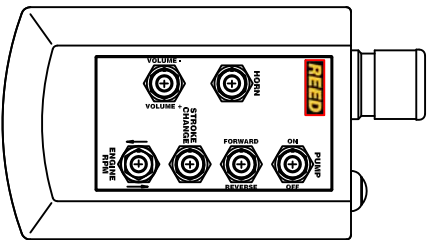
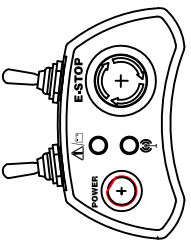
## START HERE

### TRANSMITTER SET UP

#### STEP 1

TURN OFF RADIO FIRST BY PUSHING AND HOLDING THE POWER BUTTON ON THE TOP OF THE TRANSMITTER.

**SPECIAL NOTE:**  
IF THE TRANSMITTER IS STILL ON THE GREEN LED WILL LIGHT WHEN ANY SWITCH OTHER THAN THE POWER BUTTON IS PRESSED



## TRANSMITTER

### CONTROL BOX SET UP

#### STEP 3

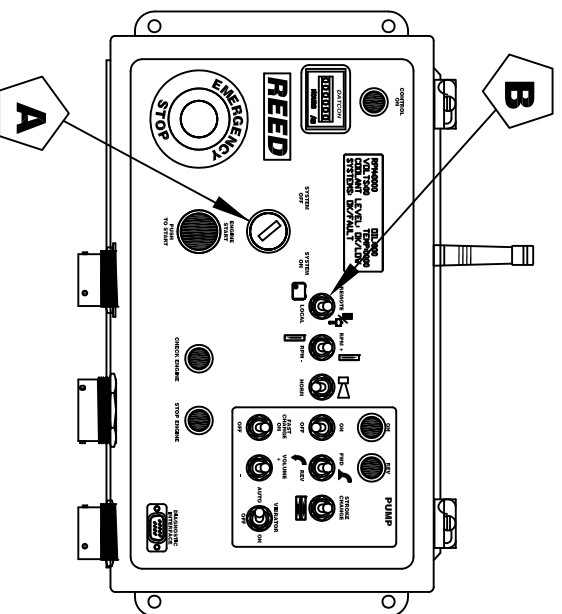
SET THE CONTROL TO LOCAL

TURN ON IGNITION KEY

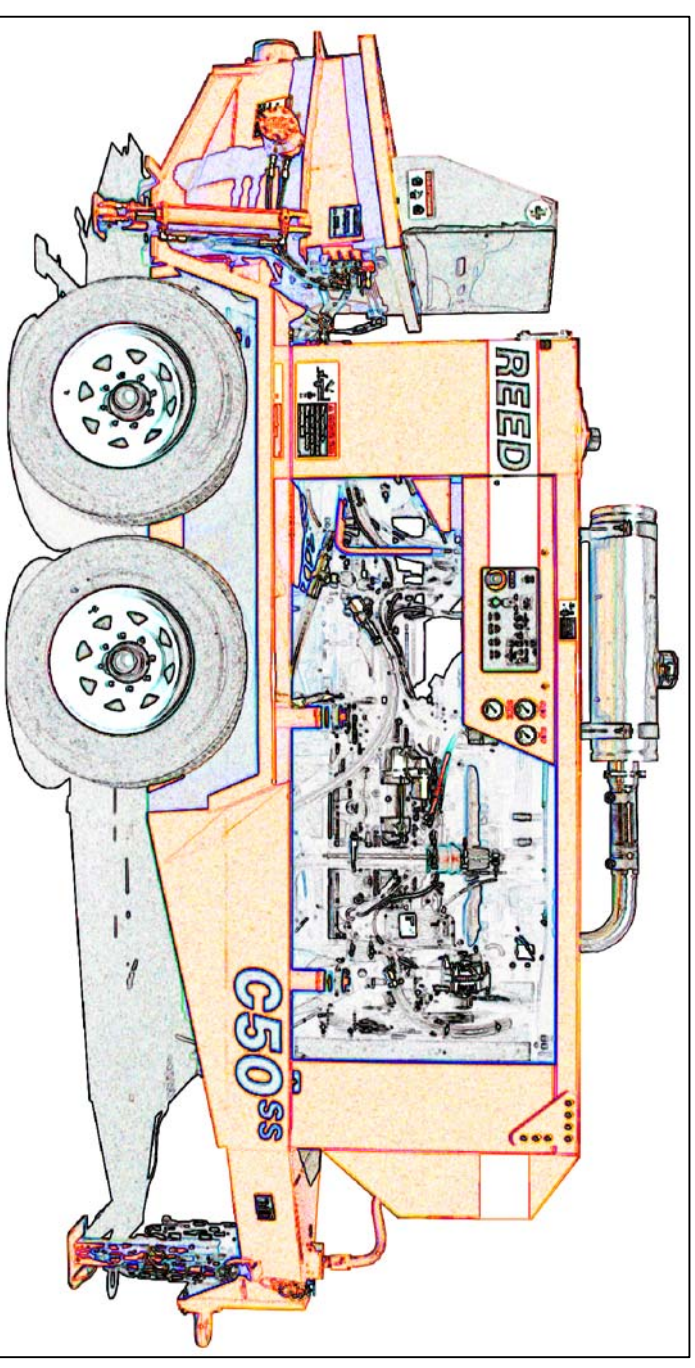
**SPECIAL NOTE:**  
ENGINE DOES NOT NEED TO BE STARTED

#### STEP 4

THE TWO LED'S ON THE TRANSMITTER WILL STOP ALTERNATELY FLASHING, THEY WILL COME ON STEADY TOGETHER FOR A FEW SECONDS AND THEN GO OFF WHEN THE TRANSMITTER AND RECEIVER ARE CORRECTLY SET UP FOR COMMUNICATION, SET THE CONTROL BOX TO "REMOTE" AND THE SYSTEM IS READY TO BE USED. IF THE CONTROL BOX DOES NOT SUCCESSFULLY RECEIVE COMMANDS FROM THE TRANSMITTER, REPEAT THE PROCEDURE FROM STEP 1.



## CONTROL BOX



<b>REED</b>		TRANSMITTER-RF-ID	C-SERIES
		TEACH-PROCEDURES	
DRAWING NO.	REV	DATE	
NPN	-	12/28/07	FIGURE07