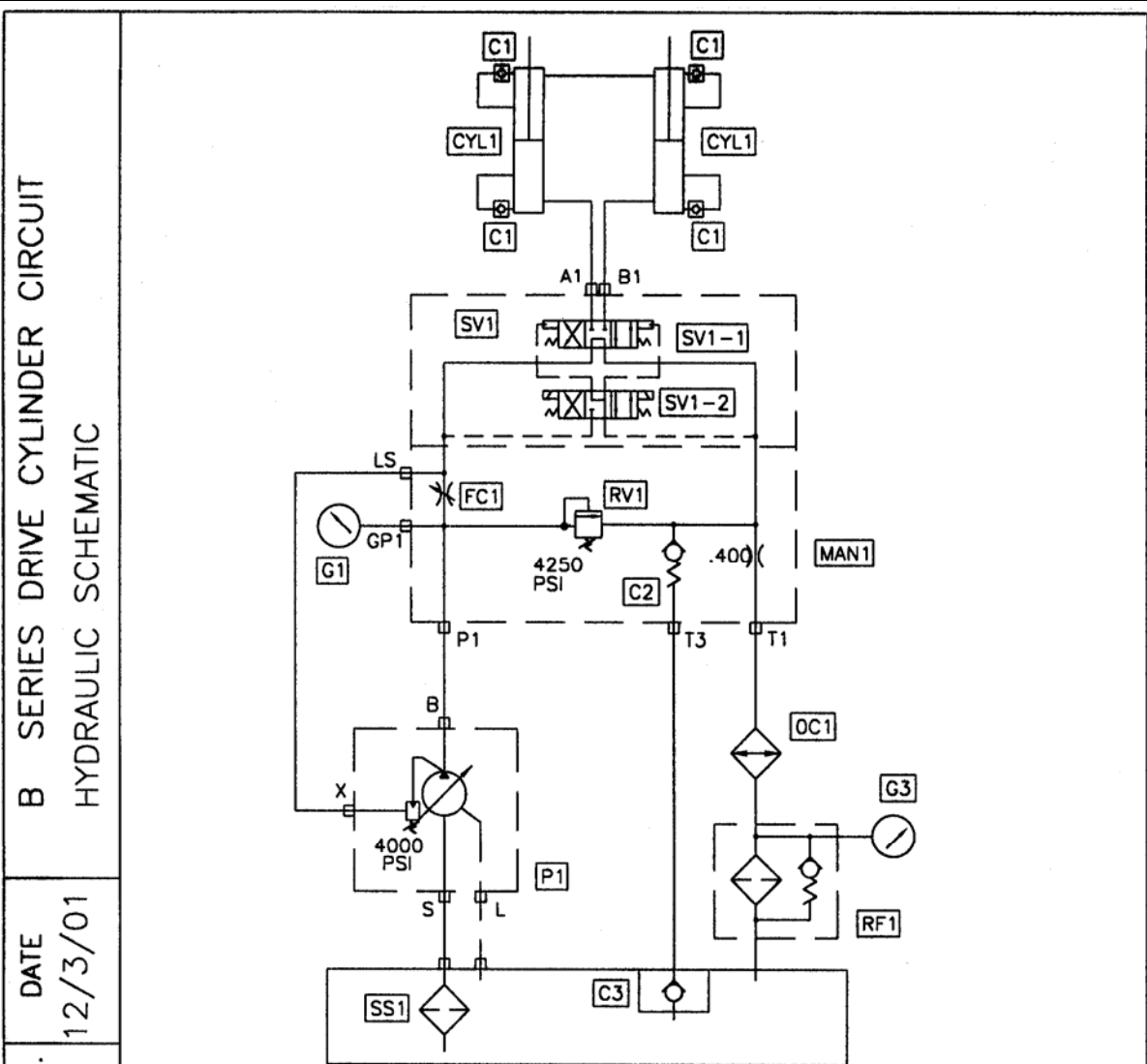




TRAILER MOUNTED PUMP 01 MODEL B70
DRIVE CYLINDER CIRCUIT
HYDRAULIC COMPONENTS & SCHEMATIC



REV.	DATE	CODE	DESCRIPTION	PART NO.	QTY.
	12/3/01	P1	Main Pump, Parts, Group 40		
		CYL1	Hydraulic Drive Cylinder, Parts Group 60		
		MAN1	Manifold Drive Cylinder Circuit	85248	1
		SV1	Solenoid Valve, Drive Cylinder Circuit	85689	1
		SV1-1	Solenoid Valve Main	85690	1
		SV2-2	Solenoid Valve Pilot	85691	1
			Coil For SV2-2	85692	2
		RV1	Relief Valve Cartridge	85696	1
		FC1	Flow Control Valve Cartridge	85697	1
		C1	Check Valve	78961	4
		C2	Check Valve Cartridge	85698	1
		C3	Check Valve	85574	1
		G1	Pressure Gauge 6000 psi	74562	1
		G3	Pressure Gauge Return	85575	1
		OC1	Oil Cooler	85713	1
		RF1	Return Filter	85282	1
			Return Filter Element	85283	1
		SS1	Magnetic Suction Strainer 2"	801024	1

REVISION:



**TRAILER MOUNTED PUMP 01 MODEL B70
SINGLE SHIFT SWING TUBE CIRCUIT
HYDRAULIC COMPONENTS & SCHEMATIC**

SCMTC

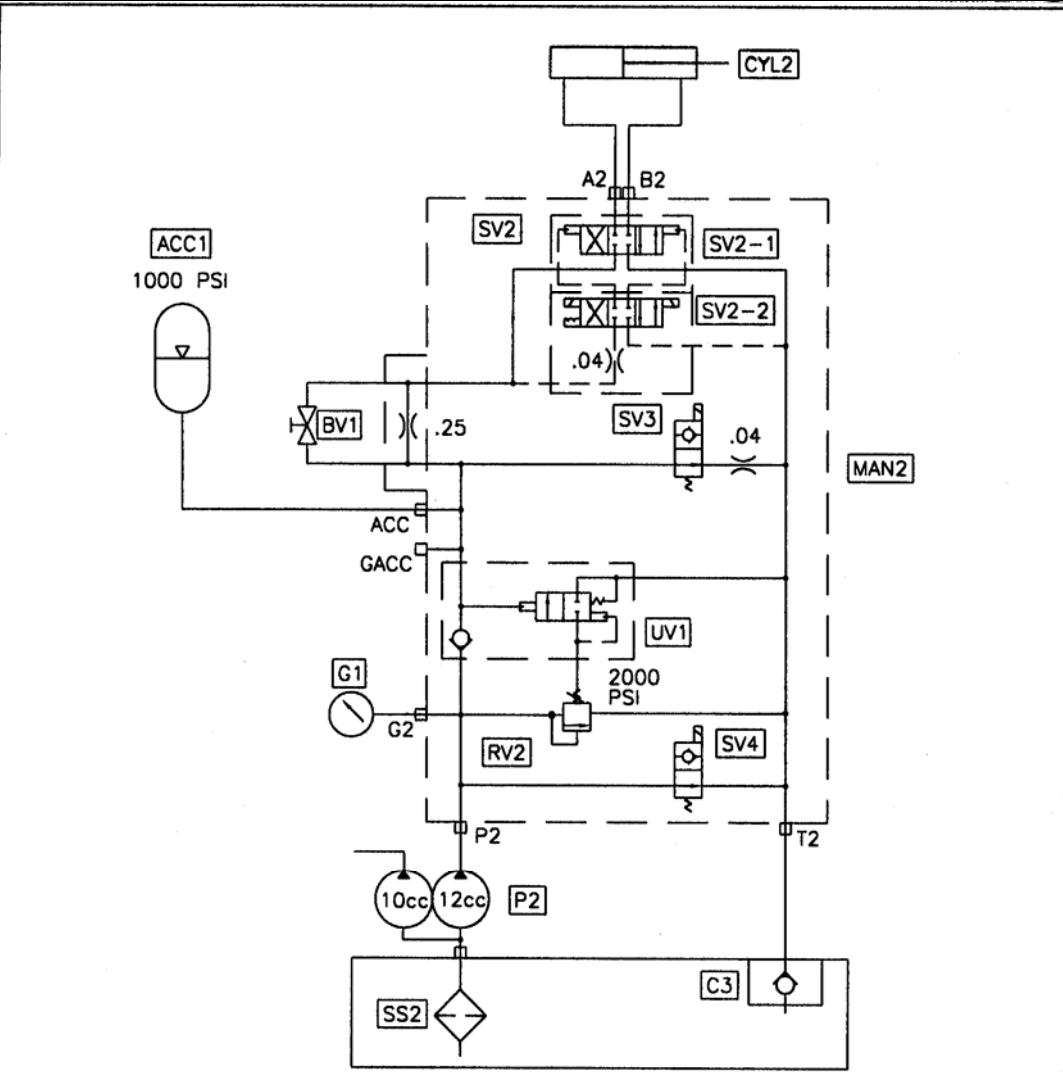
PAGE 02

B & C SERIES SWING TUBE HYDRAULIC
SCHEMATIC, SINGLE SHIFT CYLINDER

DATE
11/7/01

REV.

PART NO.
86705

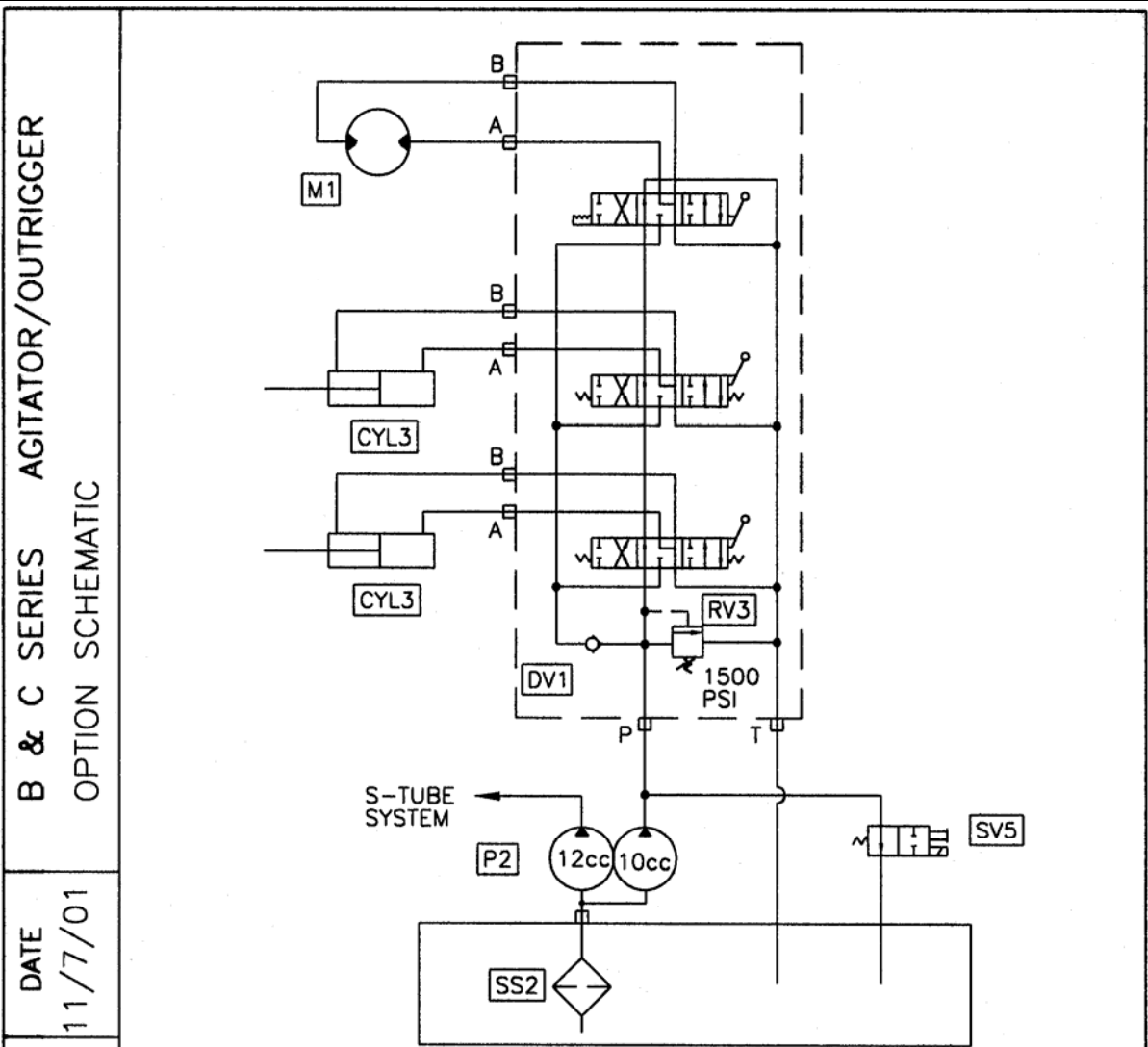


CODE	DESCRIPTION	PART NO.	QTY.
P2	Gear Pump, Parts, Group 40	73156	1
CYL2	S Tube Single Shift Cylinder	86221	1
MAN2	Manifold S Tube Circuit	85249	1
SV2	Solenoid Valve S Tube Circuit	85693	1
SV2-1	Solenoid Valve Main	85694	1
SV2-2	Solenoid Valve Pilot	85695	1
	Coil For SV2-2	85692	2
SV3	Solenoid Valve Cartridge	85699	1
	Coil For SV3	85700	1
SV4	Solenoid Valve Cartridge	85701	1
	Coil For SV4	85702	1
RV2	Relife Valve Cartridge	85703	1
UN1	Unlodng Valve Cartridge	85704	1
BV1	Ball Valve	85705	1
AAC1	Accumulator	74515	1
	Accumulator, Bladder	74516	1
G2	Pressure Gauge 3000 PSI	70366	1
SS2	Magnetic Suction Strainer 1 1/4"	79247	1
C3	Check Valve	85574	1

REVISION:



TRAILER MOUNTED PUMP 01 MODEL B70
 DUAL SHIFT SWING TUBE CIRCUIT
 HYDRAULIC COMPONENTS & SCHEMATIC



B & C SERIES AGITATOR/OUTRIGGER
 OPTION SCHEMATIC

DATE 11/7/01

REV.

PART NO. 86707



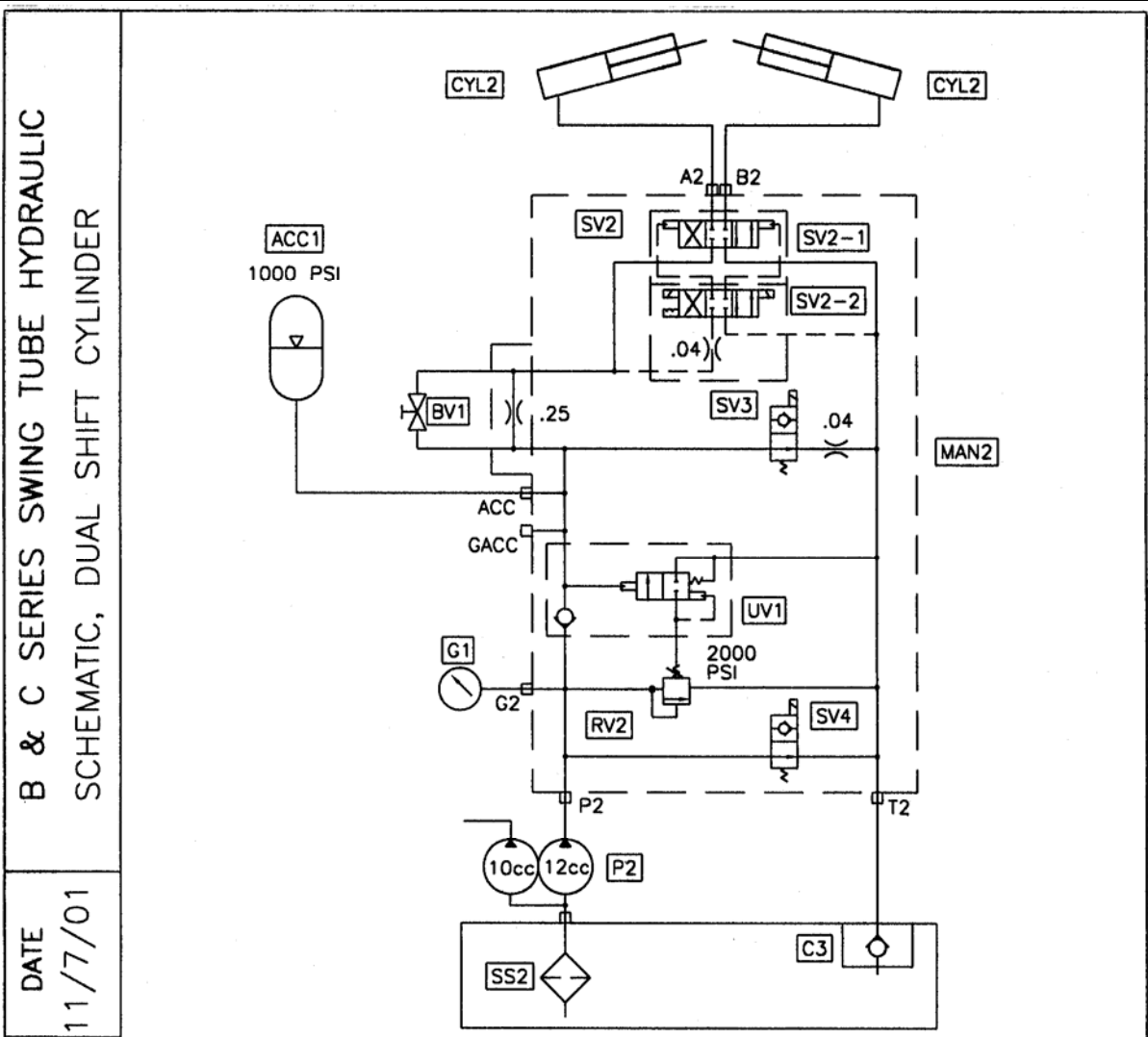
CODE	DESCRIPTION	PART NO.	QTY.
P2	Gear Pump, Parts, Group 40		
CYL3	Hydraulic Outrigger Cylinder	86220	2
DV1	Directional Valve Agitator/Outrigger	86329	1
RV3	Relife Valve Cartrige	85706	1
M1	Agitator Motor, Parts, Group 20		
SV5	Solenoid Valve	85815	1
	Coil For SV5	85702	1
SS2	Magnetic Suction Strainer 1 1/4"	79247	1



**TRAILER MOUNTED PUMP 01 MODEL B70
AGITATOR / OUTRIGGER OPTION CIRCUIT
HYDRAULIC COMPONENTS & SCHEMATIC**

SCMTC

PAGE 04



B & C SERIES SWING TUBE HYDRAULIC
SCHEMATIC, DUAL SHIFT CYLINDER

DATE
11/7/01

REV.
PART NO.
86706



CODE	DESCRIPTION	PART NO.	QTY.
P2	Gear Pump, Parts, Group 40		
CYL2	S Tube Single Shift Cylinder	86220	2
MAN2	Manifold S Tube Circuit	85249	1
SV2	Solenoid Valve S Tube Circuit	85693	1
SV2-1	Solenoid Valve Main	85694	1
SV2-2	Solenoid Valve Pilot	85695	1
	Coil For SV2-2	85692	2
SV3	Solenoid Valve Cartridge	85699	1
	Coil For SV3	85700	1
SV4	Solenoid Valve Cartridge	85701	1
	Coil For SV4	85702	1
RV2	Relife Valve Cartridge	85703	1
UN1	Unloading Valve Cartridge	85704	1
BV1	Ball Valve	85705	1
ACC1	Accumulator	74515	1
	Accumulator, Bladder	74516	1
G2	Pressure Gauge 3000 PSI	70366	1
SS2	Magnetic Suction Strainer 1 1/4"	79247	1
C3	Check Valve	85574	1

REVISION:



**TRAILER MOUNTED PUMP 01 MODEL B70
HYDRAULIC HOSE KIT**

HOSE KIT 86365

Part No.	End #1	End #2
85666-001	Main Pump "P"	Cylinder Manifold "P1"
85666-001	Cylinder Bulkhead "A"	Cylinder "A"
85666-006	Cylinder Bulkhead "B"	Cylinder "B"
85659-001	Main pump load sense	Cylinder Manifold "LS"
85657-005	Main pump case drain	Tank return
85654-001	Cylinder Manifold "T1"	Oil Cooler "IN"
85654-001	Oil Cooler "OUT"	Return Filter Bulkhead
85659-002	Check Loop	
85659-002	Check Loop	
85659-002	Check Loop	
85659-002	Check Loop	
85659-002	Check Loop	
85663-002	Tank Suction	Tandem Pump "S"
85657-002	Tandem Pump 12cc"P"	S-Tube Manifold "P2"
85667-001	S-Tube Manifold "ACC"	Acumulator
85657-002	Bulkhead "A"	Left shift cylinder bore side
85657-002	Bulkhead "B"	Right shift cylinder bore side
85657-003	Tandem Pump 10cc"P"	Bulkhead Tee "P"
85657-002	Bulkhead Tee "P"	Bypass Valve "1"
85657-016	Bulkhead "T"	Bulkhead "P"
85657-004	Bulkhead "T"	Cylinder Manifold "T1"

SUCTION HOSES - POWER TRAIN

Part No.	End #1	End #2
85660-001	Tank Suction	Main Pump "S"
85661-001	Tank Suction	Main Pump "S"
85662-001	Tank Suction	Main Pump "S"

FUEL HOSES - 86344 FUEL GROUP

Part No.	End #1	End #2
85669-001	Fuel Tank Suction	Fuel Filter "IN"
85669-005	Fuel Filter "OUT"	Engine
74716	Engine	Fuel Tank Return

CONTROL VALVE GROUP - 86329

Part No.	End #1	End #2
85657-016	Bulkhead "P"	Agitator Valve "P"
85658-011	Agitator Valve "A"	Agitator Motor "A"
85658-010	Agitator Valve "B"	Agitator Motor "B"

HYD OUTRIGGER GROUP - 86334

Part No.	End #1	End #2
85659-010	O/R Valve "A"	RH Outrigger Bore
85659-010	O/R Valve "B"	RH Outrigger Rod
85659-010	O/R Valve Tube "A"	LH Outrigger Bore
85659-010	O/R Valve Tube "B"	LH Outrigger Rod

WATER PUMP - 86400

Part No.	End #1	End #2
85657-021	Agitator Valve "PB"	Bulkhead "P"
85657-023	Bulkhead "P"	Water Valve "P"
85657-023	Water Valve "T"	Tank
85658-002	Water Valve "B"	Motor "A"
85658-002	Water Valve "A"	Motor "B"
85657-022	Water Relief	Water Suction



**TRAILER MOUNTED PUMP 01 MODEL B70
ELECTRICAL COMPONENTS (1 OF 2)**

Code	Description	Part No.	Qty	Location
SWITCHES				
1S1	Key Switch	71154	1	Control Panel
2S2	Toggle Switch, Horn	85347	1	Control Panel
3S3	Toggle Switch, Local/Remote	78563	1	Control Panel
3S4	Toggle Switch, Pump On/Reverse	72003	1	Control Panel
3S5	Toggle Switch, Test A/B	85346	1	Control Panel
3S6	E-Stop Switch	85342	1	Control Panel
	Contact Block, 1NC for 3S6	85343	1	Control Panel
3S7	E-Stop Switch	85342	1	Remote Control
	Contact Block, 1NC for 3S7	85343	1	Remote Control
3S8	Toggle Switch, Horn	85347	1	Remote Control
3S9	Toggle Switch, Pump On/Reverse	72003	1	Remote Control
RELAYS				
1K1	Relay, Engine Start	85348	1	Engine
LIGHTS				
1L1	Light, Green, Control On	85355	1	Control Panel
1L2	Light, Red, Oil Temperature	73775	1	Control Panel
1L3	Light, Red, Coolant Level	73775	1	Control Panel
1L4	Light, Red, Oil Pressure	73775	1	Control Panel
1L5	Light, Red, Alternator	73775	1	Control Panel
	Bulb for 1L2, 1L3, 1L4, 1L5	72022	4	Control Panel
2L6	Bulb, E-Stop	85344	1	Control Panel
2L7	Light, Green, Local	85355	1	Control Panel
3L8	Light, Yellow, Remote	85356	1	Control Panel
3L9	Light, Green, Pump On	85355	1	Control Panel
3L10	Light, Green, Reverse	85355	1	Control Panel
3L11	Bulb, E-Stop	85344	1	Remote Control
3L12	Light, Green, Pump On	85355	1	Remote Control
GAUGES				
1Q1	Hour Meter	74240	1	Control Panel
1Q2	Tachometer	78687	1	Control Panel
1Q3	Coolant Temperature Gauge	78203	1	Control Panel

REVISION:



**TRAILER MOUNTED PUMP 01 MODEL B70
ELECTRICAL COMPONENTS (2 OF 2)**

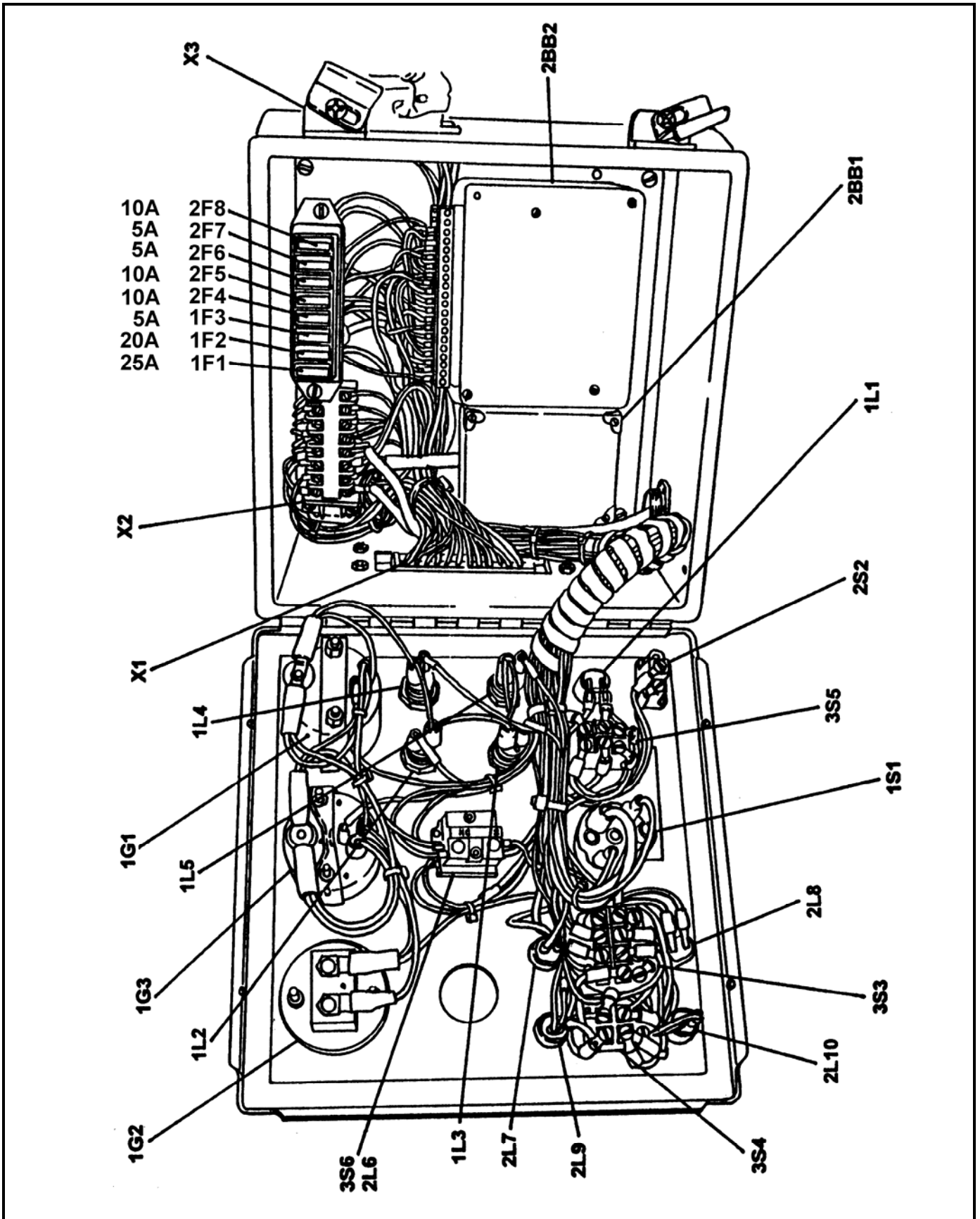
Code	Description	Part No.	Qty	Location
FUSES				
1F1	Fuse, 25A	800447	1	Control Panel
1F2	Fuse, 20A	800448	1	Control Panel
1F3	Fuse, 5A	90392	1	Control Panel
2F4	Fuse, 10A	800449	1	Control Panel
2F5	Fuse, 10A	800449	1	Control Panel
2F6	Fuse, 5A	90392	1	Control Panel
2F7	Fuse, 5A	90392	1	Control Panel
2F8	Fuse, 10A	800449	1	Control Panel
	Fuse Block, 8 Way	85354	1	Control Panel
SOLENOID VALVE COILS				
1Y1	Coil, Fuel Solenoid	Deutz	1	Engine
1Y2	Coil, Accumulator Bypass	85700	1	S-Tube Manifold
1Y3	Coil, S-Tube Bypass	85702	1	S-Tube Manifold
1Y4	Coil, Agitator Bypass	73184	1	Hyd. Tank
2Y5	Coil, Cylinder "B"	85692	1	S-Tube Manifold
2Y6	Coil, Cylinder "A"	85692	1	S-Tube Manifold
2Y7	Coil, S-Tube Shift "A"	85692	1	Pump Manifold
2Y8	Coil, S-Tube Shift "B"	85692	1	Pump Manifold
	Plugs for 1Y2 thru 2Y8	74597	7	Manifolds
MISCELLANEOUS				
2BB1	Black Box, Pump Control	85334	1	Control Box
2BB2	Black Box, E-Stop Logic	85596	1	Control Box
2P1	Proximity Switch, Cyl "B"	77998	1	Water Box
2P2	Proximity Switch, Cyl "A"	77998	1	Water Box
2H1	Horn	800347	1	Control Box
3R1	Resistor, 100 Ohm	72777	1	Remote Control
CONNECTORS				
X1	Connector Insert, 24 Pin, Female	78696	1	Control Box
X1	Connector Base	78697	1	Control Box
X1	Connector Insert, 24 Pin, Male	78695	1	Harness
X1	Connector Hood	800424	1	Harness
X2	Terminal Block	72820	8	Control Box
X3	Connector Insert, 10 Pin, Female	79963	1	Control Box
X3	Connector Base	79965	1	Control Box
X3	Connector Insert, 10 Pin, Male	79964	1	Remote Control
X3	Connector Hood	79966	1	Remote Control
X4	Connector, Engine, White	72926	1	Harness
X5	Connector, Engine, Yellow	76902	1	Harness



TRAILER MOUNTED PUMP 01 MODEL B70
CONTROL BOX
ELECTRICAL COMPONENTS

SCMTC

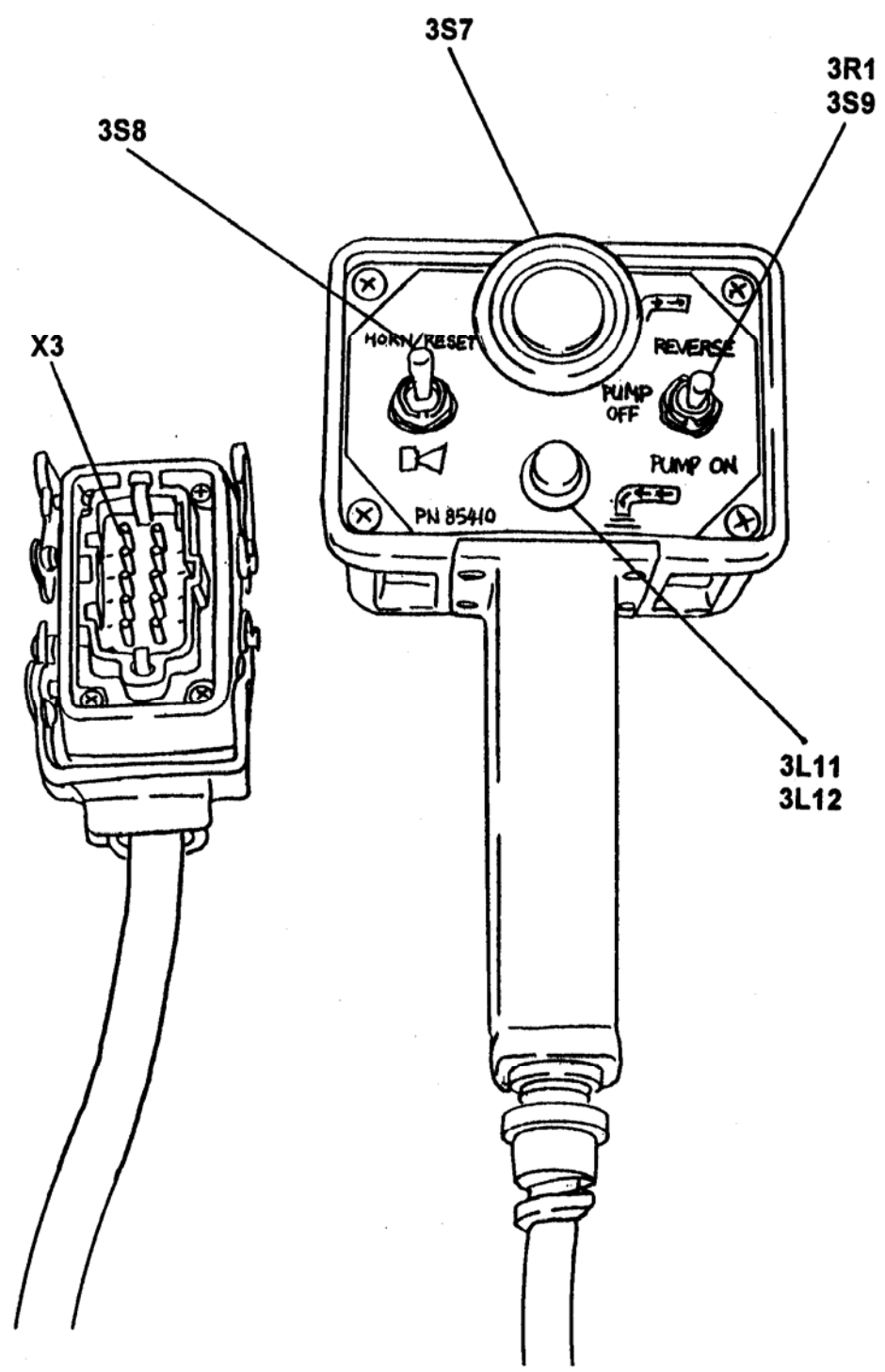
PAGE 09



REVISION:



TRAILER MOUNTED PUMP 01 MODEL B70
CABLE REMOTE CONTROL
ELECTRICAL COMPONENTS



REVISION:



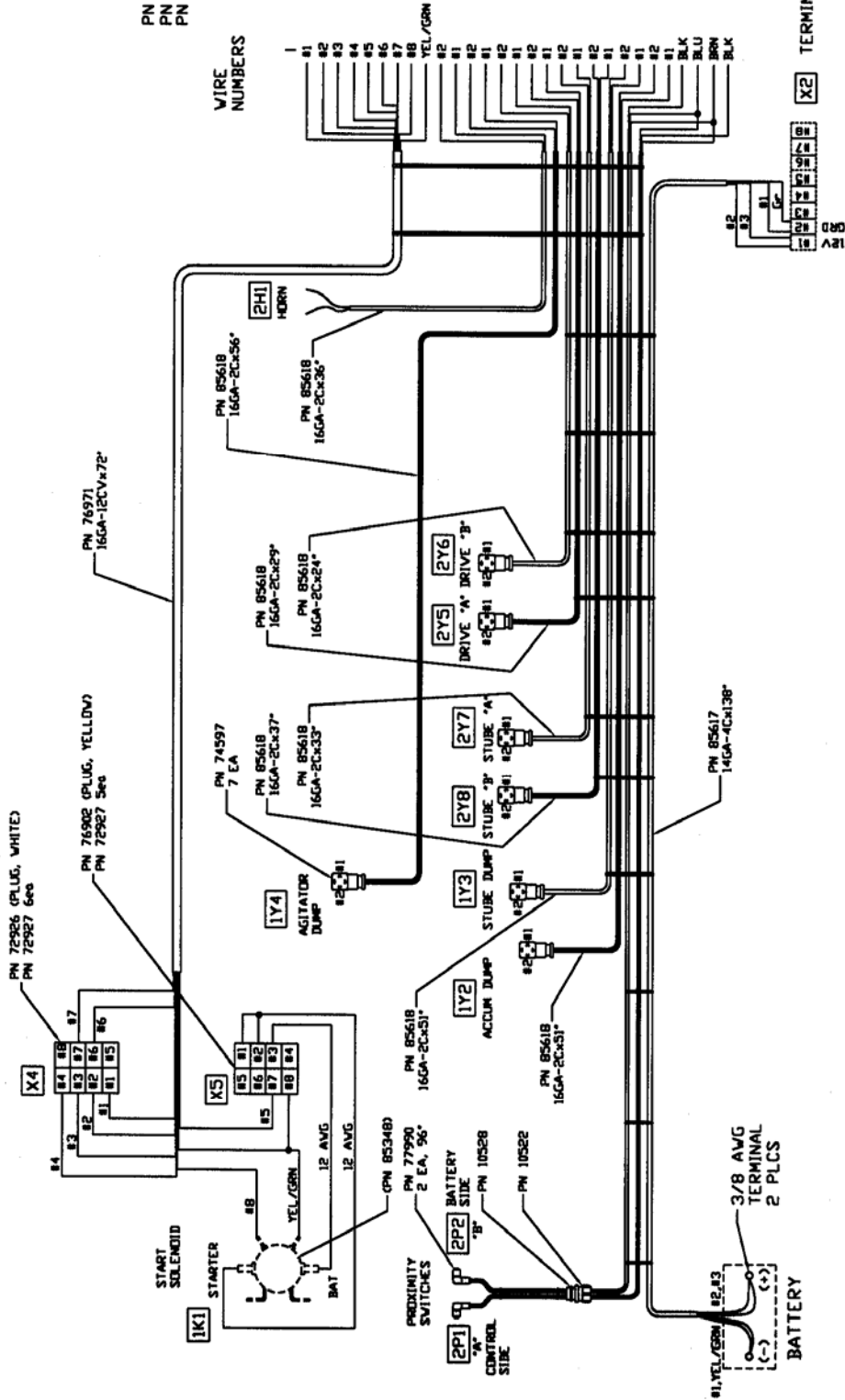
TRAILER MOUNTED PUMP 01 MODEL B70 ENGINE WIRING HARNESS

7/16/00

PN 800424 HOOD
PN 78695 INSERT
PN 801479 CONNECTOR

WIRE NUMBERS
24 PIN PLUG

- 1
- 81 TACHOMETER
- 82 ALTERNATOR
- 83 COOLANT TEMP
- 84 OIL TEMP
- 85 COOLANT LEVEL
- 86 OIL PRESSURE
- 87 FUEL SOLENOID
- 88 ENGL START
- 89 GROUND
- 90 HORN -
- 91 HORN +
- 92 AGITATOR BUMP -
- 93 AGITATOR BUMP +
- 94 DRIVE CYL "A" -
- 95 DRIVE CYL "A" +
- 96 DRIVE CYL "B" -
- 97 DRIVE CYL "B" +
- 98 STUPE "A" -
- 99 STUPE "A" +
- 100 STUPE "B" -
- 101 STUPE "B" +
- 102 STUPE BUMP -
- 103 STUPE BUMP +
- 104 ACCUM BUMP -
- 105 ACCUM BUMP +
- 106 GROUND
- 107 PROX SWITCH "B"
- 108 PROX SWITCH "A"
- 109
- 110
- 111
- 112
- 113
- 114
- 115



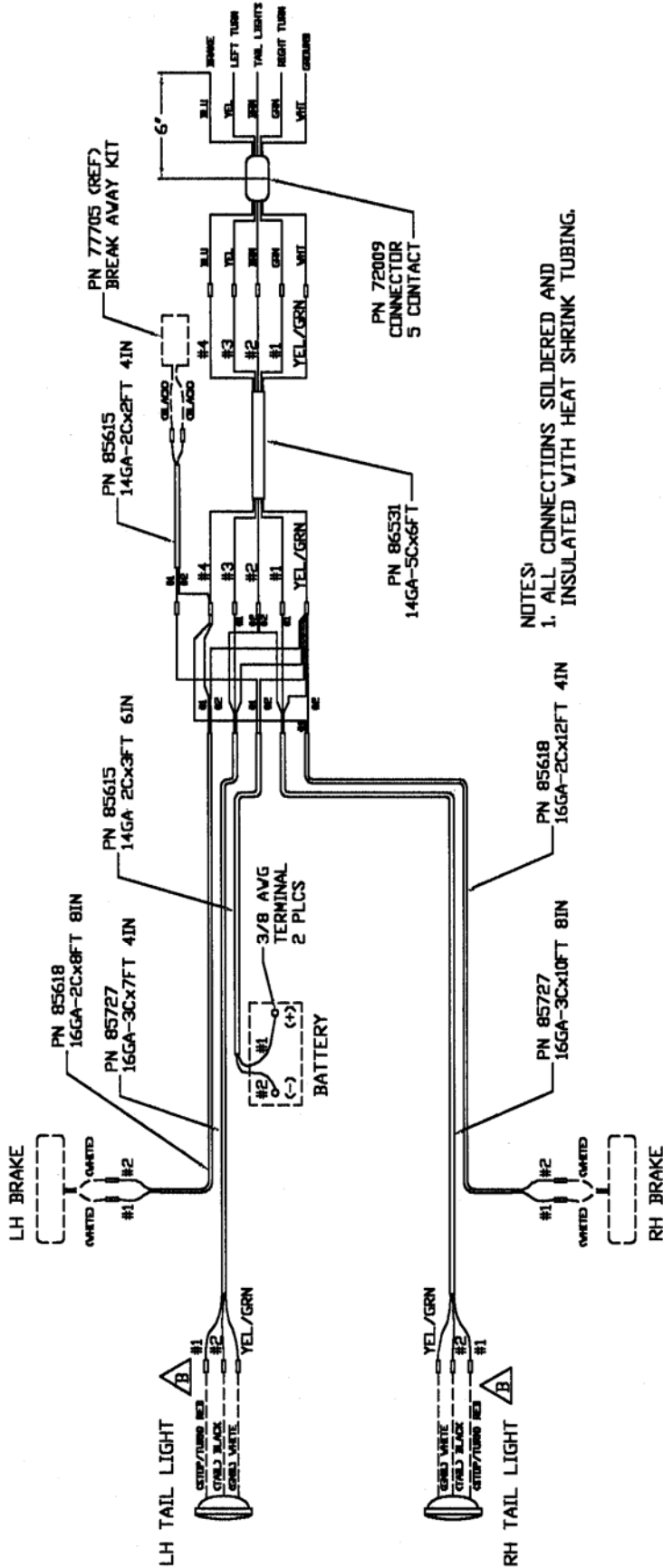
REVISION:



TRAILER MOUNTED PUMP 01 MODEL B70 TRAILER WIRING HARNESS

SCMTC

PAGE 12



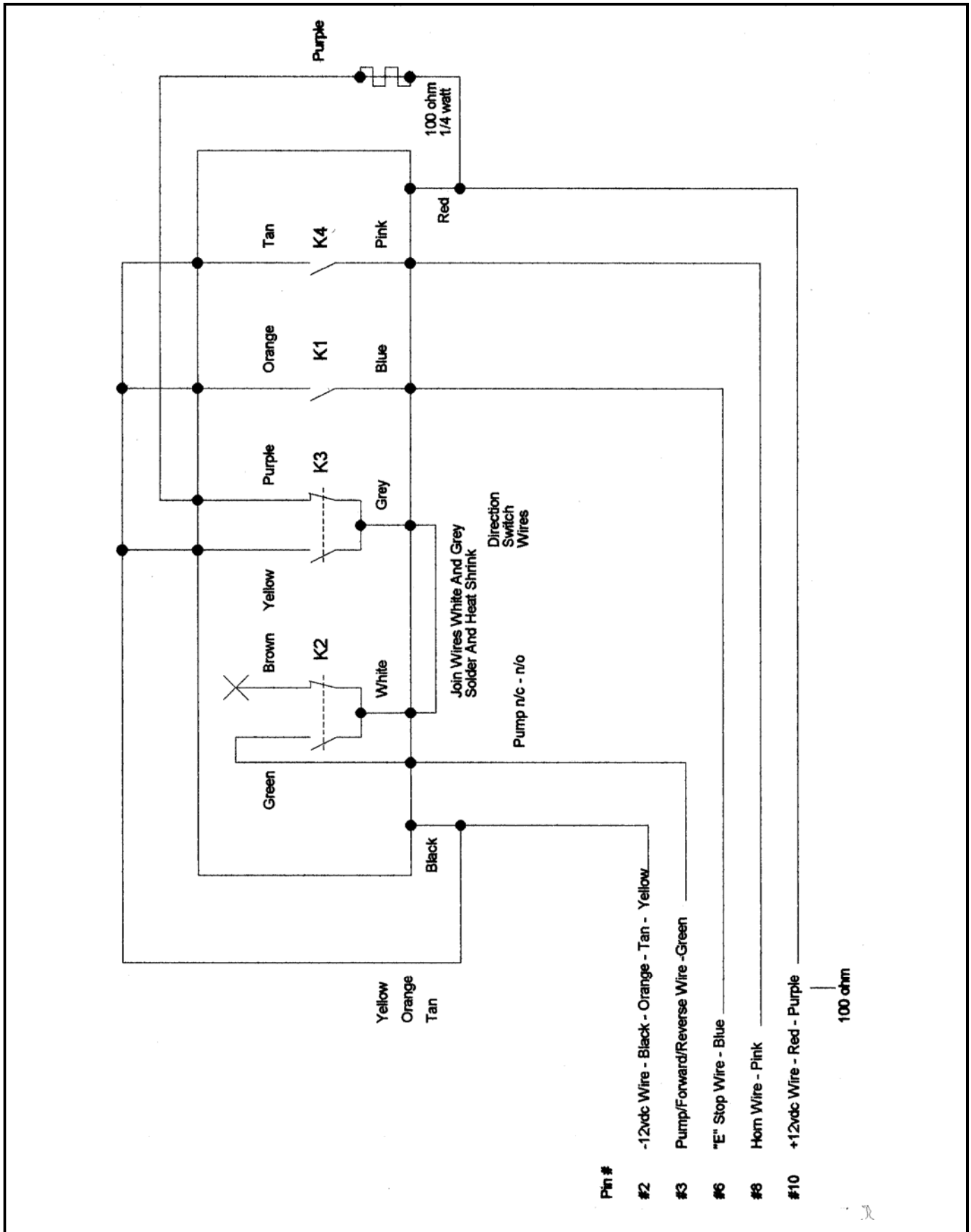
NOTES:
1. ALL CONNECTIONS SOLDERED AND INSULATED WITH HEAT SHRINK TUBING.

		TRAILER HARNESS		B-SERIES
		B-SERIES		SCMTC
DRAWING NO.	REV	DATE	PAGE 1 of 1	
86533	B	3/12/02		

REVISION:



TRAILER MOUNTED PUMP 01 MODEL B70
 RADIO REMOTE CONTROL OPTION
 ELECTRICAL SCHEMATIC



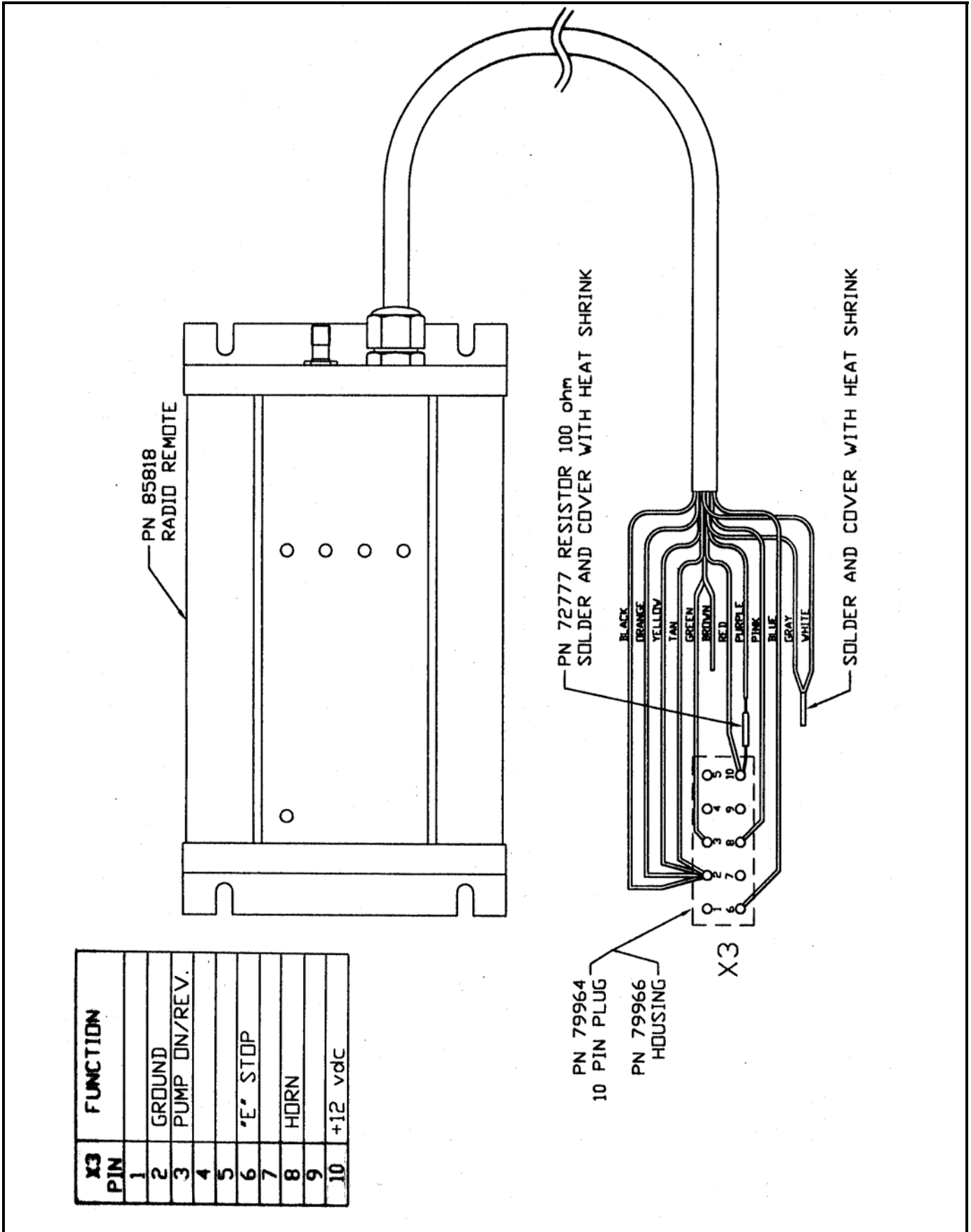
REVISION:



TRAILER MOUNTED PUMP 01 MODEL B70
 RADIO REMOTE CONTROL OPTION
 WIRING DIAGRAM

SCMTC

PAGE 14



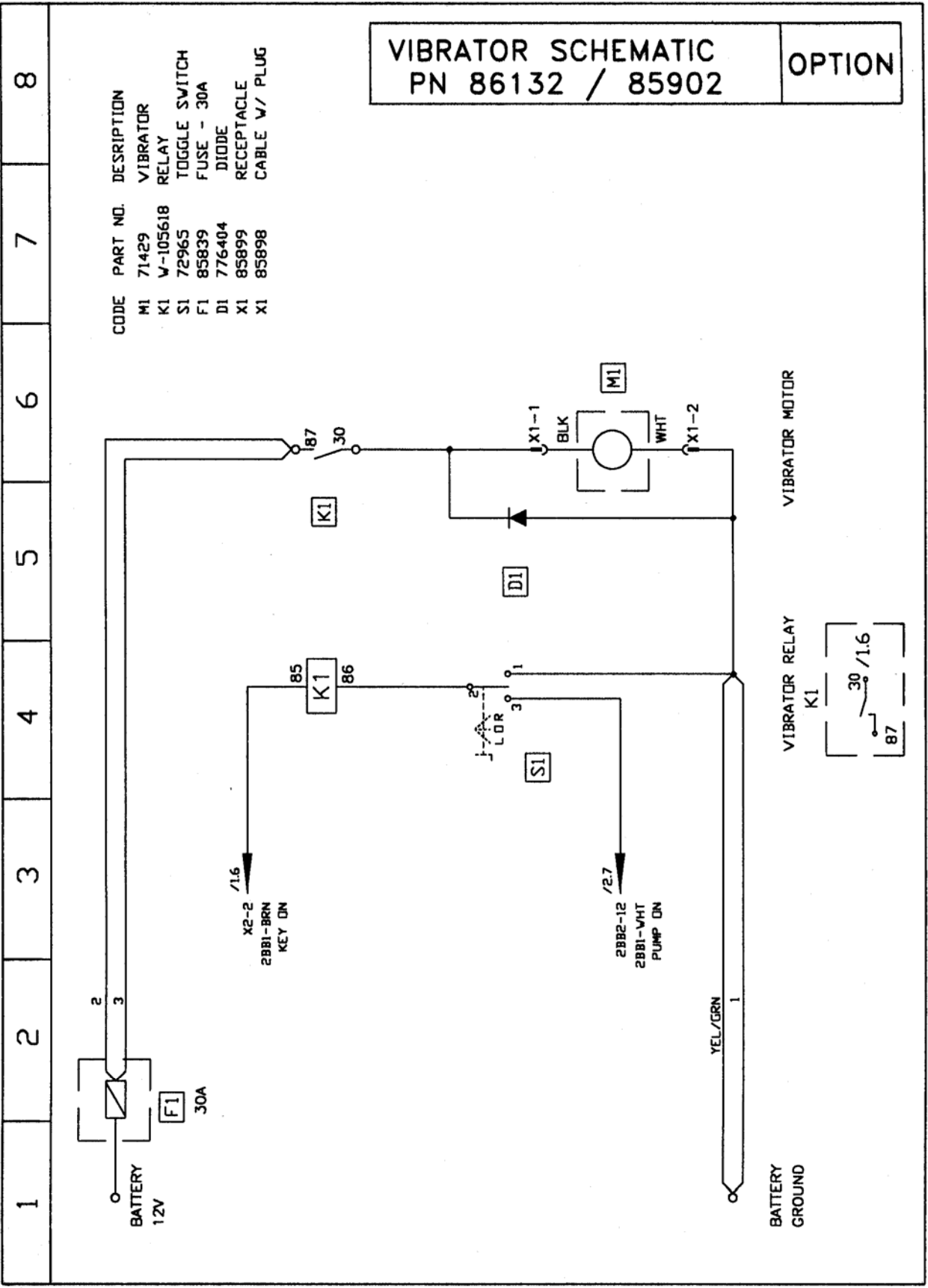
REVISION:



TRAILER MOUNTED PUMP 01 MODEL B70
HOPPER VIBRATOR OPTION
ELECTRICAL SCHEMATIC

SCMTC

PAGE 15



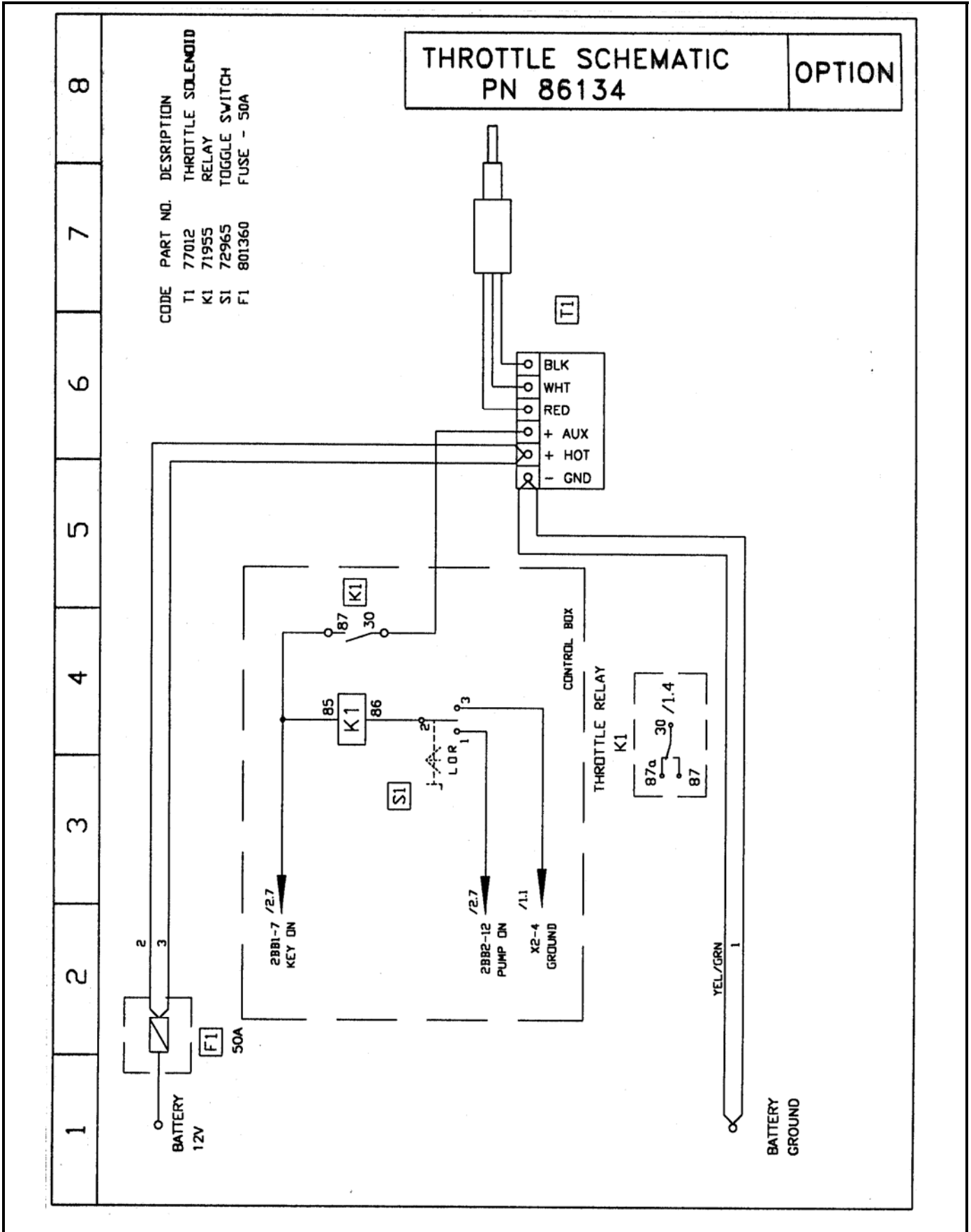
REVISION:



TRAILER MOUNTED PUMP 01 MODEL B70
ENGINE THROTTLE OPTION
ELECTRICAL SCHEMATIC

SCMTC

PAGE 16



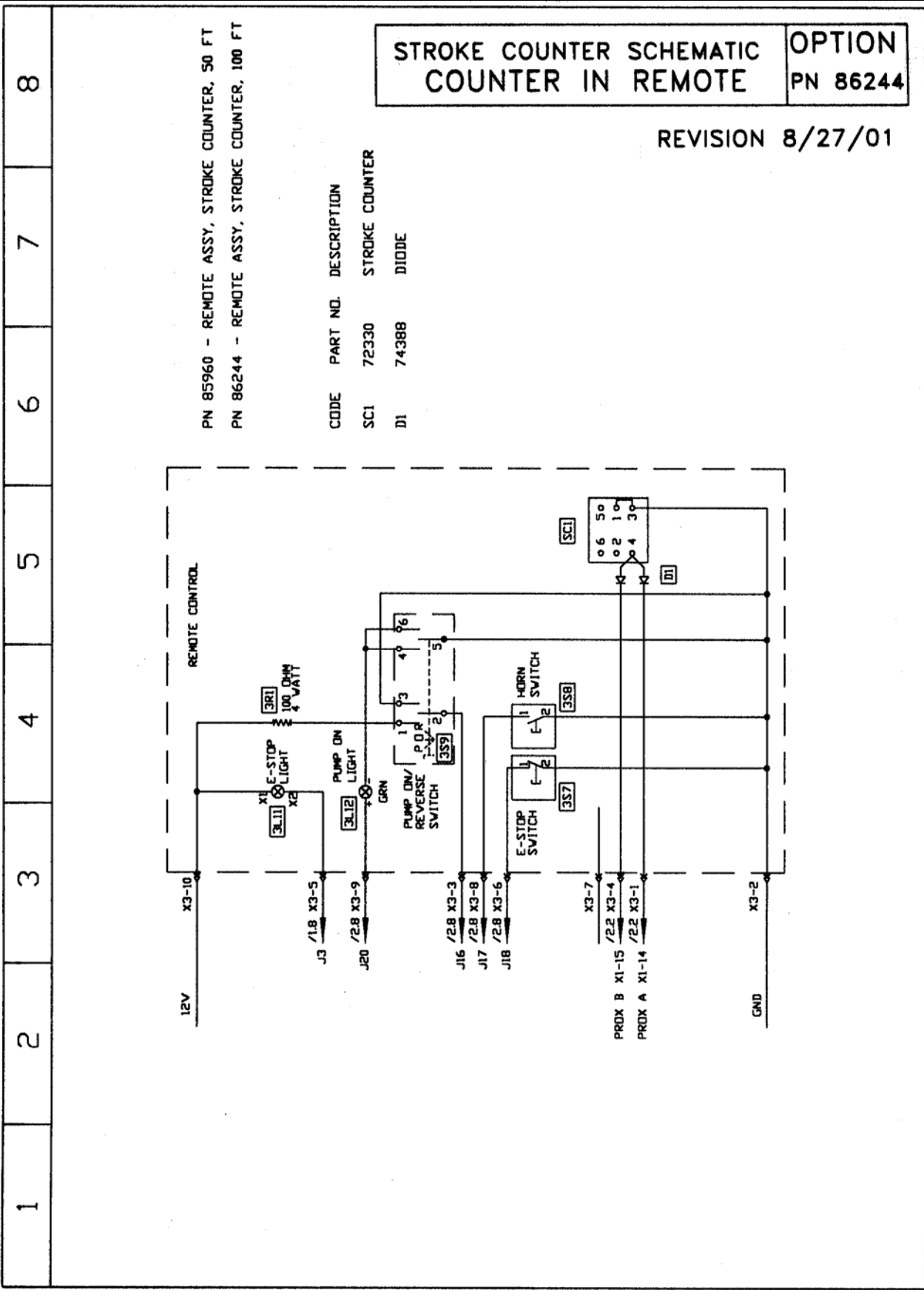
REVISION:



TRAILER MOUNTED PUMP 01 MODEL B70 STROKE COUNTER OPTION ELECTRICAL SCHEMATIC

SCMTC

PAGE 17



REVISION: