



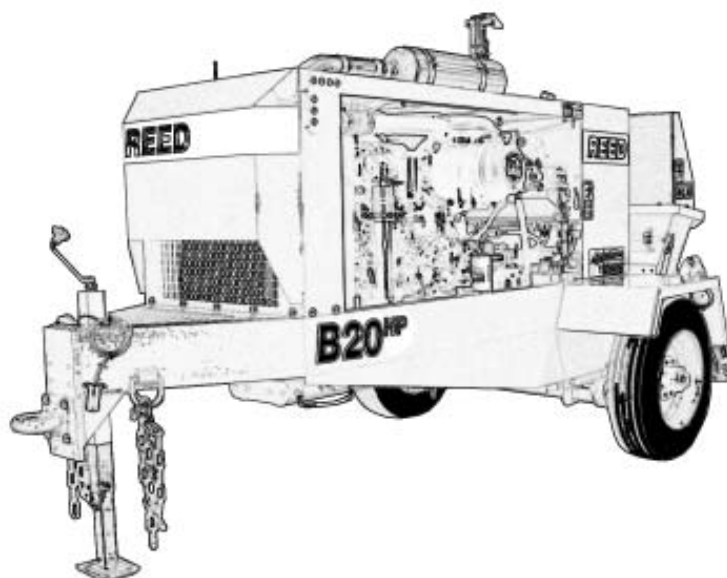
## TRAILER MOUNTED PUMP MODEL *B20* SCHEMATICS SECTION

SCMTC

FIGURE 00  
PAGE 00

**REED** TRAILER MOUNTED CONCRETE PUMP MODEL *B20* ILLUSTRATED PARTS  
MANUAL: SCHEMATICS SECTION CONTAINS THE FOLLOWING FIGURES:

<b>FIGURE</b>	<b>00</b>	TABLE OF CONTENTS
<b>FIGURE</b>	<b>01</b>	DRIVE CYLINDER CIRCUIT
<b>FIGURE</b>	<b>02</b>	SINGLE SHIFT SWING TUBE CIRCUIT
<b>FIGURE</b>	<b>03</b>	DUAL SHIFT SWING TUBE CIRCUIT
<b>FIGURE</b>	<b>04</b>	AGITATOR/OUTRIGGERS OPTIONS CIRCUIT
<b>FIGURE</b>	<b>05</b>	HYDRAULIC HOSE KIT
<b>FIGURE</b>	<b>06</b>	ELECTRICAL COMPONENTS-CONTROL PANEL
<b>FIGURE</b>	<b>07</b>	ELECTRICAL COMPONENTS-CABLE REMOTE CONTROL
<b>FIGURE</b>	<b>08</b>	ENGINE WIRING HARNESS
<b>FIGURE</b>	<b>09</b>	TRAILER WIRING HARNESS
<b>FIGURE</b>	<b>10</b>	PN 87346-2 MAIN CONTROL BOX DATA
<b>FIGURE</b>	<b>11</b>	PN 87425-2 MAIN CONTROL BOX SCHEMATIC
<b>FIGURE</b>	<b>12</b>	PN 87347-1 PENDANT CONTROL BOX DATA & SCHEMATIC
<b>FIGURE</b>	<b>13</b>	CONTROL PANEL MOD. FOR STROKE COUNTER-OPTION
<b>FIGURE</b>	<b>14</b>	DOCUMENT-TRANSMITTER RF I.D. TEACH PROCEDURE



REVISION:



# TRAILER MOUNTED PUMP MODEL B20 DRIVE CYLINDER CIRCUIT HYDRAULIC COMPONENTS & SCHEMATIC

SCMTC

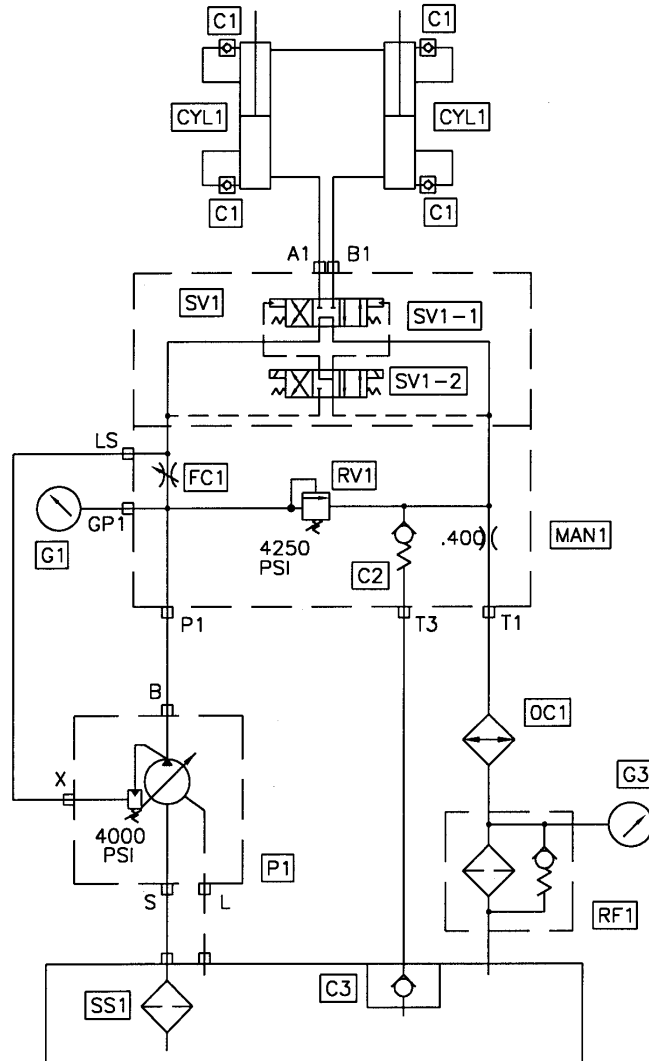
FIGURE 01  
PAGE 01

B SERIES DRIVE CYLINDER CIRCUIT  
HYDRAULIC SCHEMATIC

DATE  
12/3/01

REV.

PART NO.  
86708



CODE	DESCRIPTION	PART NO.	QTY.
P1	Main Pump, Parts, Group 40		
CYL1	Hydraulic Drive Cylinder, Parts Group 60		
MAN1	Manifold Drive Cylinder Circuit	85248	1
SV1	Solenoid Valve, Drive Cylinder Circuit	85689	1
SV1-1	Solenoid Valve Main	85690	1
SV2-2	Solenoid Valve Pilot	85691	1
	Coil For SV2-2	85692	2
RV1	Relief Valve Cartridge	85696	1
FC1	Flow Control Valve Cartridge	85697	1
C1	Check Valve	78961	4
C2	Check Valve Cartridge	85698	1
C3	Check Valve	85574	1
G1	Pressure Gauge 6000 psi	74562	1
G3	Pressure Gauge Return	85575	1
OC1	Oil Cooler	85713	1
RF1	Return Filter	85282	1
	Return Filter Element	85283	1
SS1	Magnetic Suction Strainer 2"	801024	1

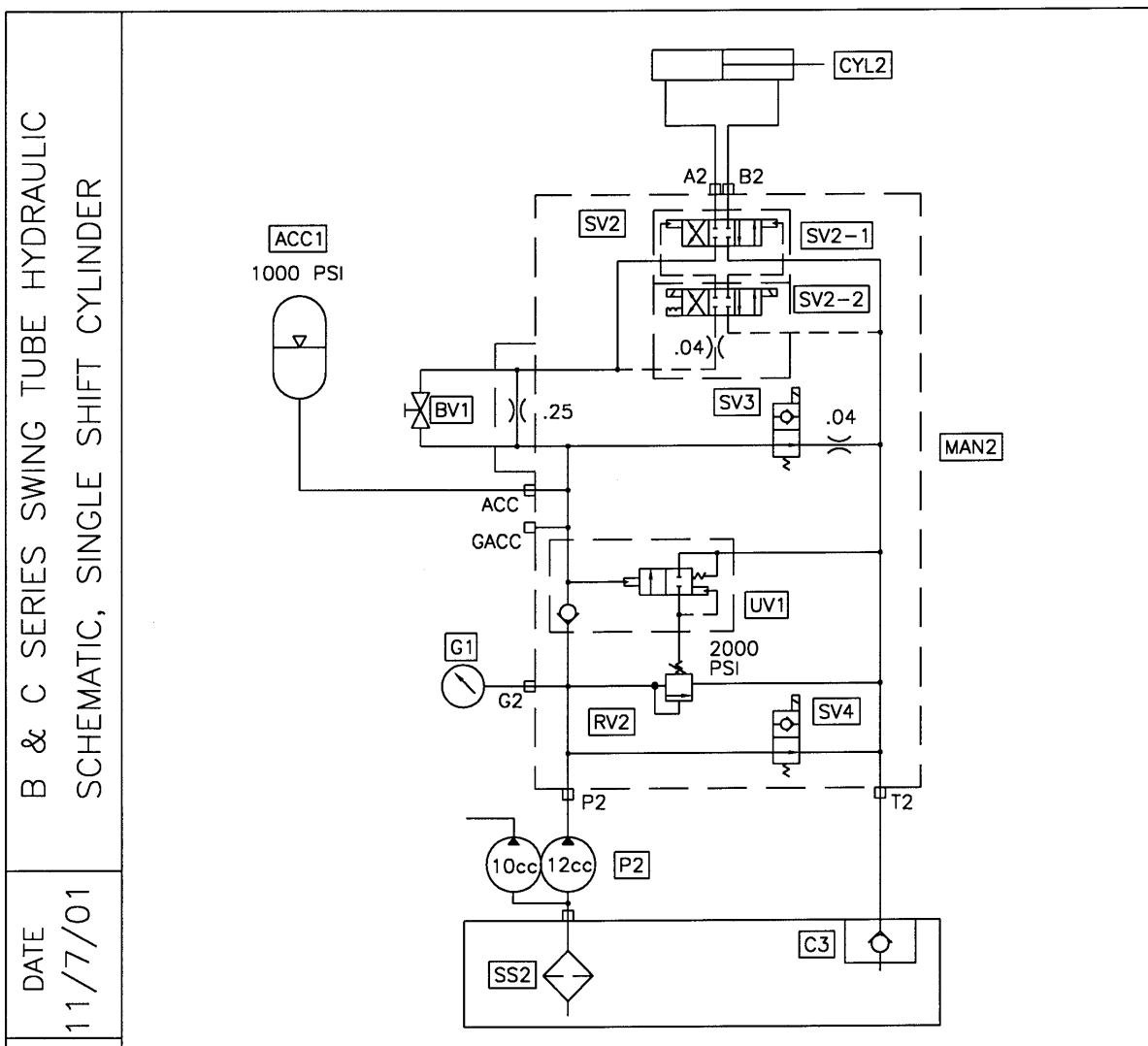
REVISION:



# TRAILER MOUNTED PUMP MODEL B20 SINGLE SHIFT SWING TUBE CIRCUIT HYDRAULIC COMPONENTS & SCHEMATIC

SCMTC

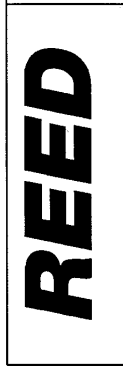
FIGURE 02  
PAGE 02



DATE  
11/7/01

REV.

PART NO.  
86705



CODE	DESCRIPTION	PART NO.	QTY.
P2	Gear Pump, Parts, Group 40	73156	1
CYL2	S Tube Single Shift Cylinder	86221	1
MAN2	Manifold S Tube Circuit	85249	1
SV2	Solenoid Valve S Tube Circuit	85693	1
SV2-1	Solenoid Valve Main	85694	1
SV2-2	Solenoid Valve Pilot	85695	1
	Coil For SV2-2	85692	2
SV3	Solenoid Valve Cartridge	85699	1
	Coil For SV3	85700	1
SV4	Solenoid Valve Cartridge	85701	1
	Coil For SV4	85702	1
RV2	Relife Valve Cartridge	85703	1
UN1	Unlodng Valve Cartridge	85704	1
BV1	Ball Valve	85705	1
AAC1	Accumulator	74515	1
	Accumulator, Bladder	74516	1
G2	Pressure Gauge 3000 PSI	70366	1
SS2	Magnetic Suction Strainer 1 1/4"	79247	1
C3	Check Valve	85574	1

REVISION:



# TRAILER MOUNTED PUMP MODEL B20 DUAL SHIFT SWING TUBE CIRCUIT HYDRAULIC COMPONENTS & SCHEMATIC

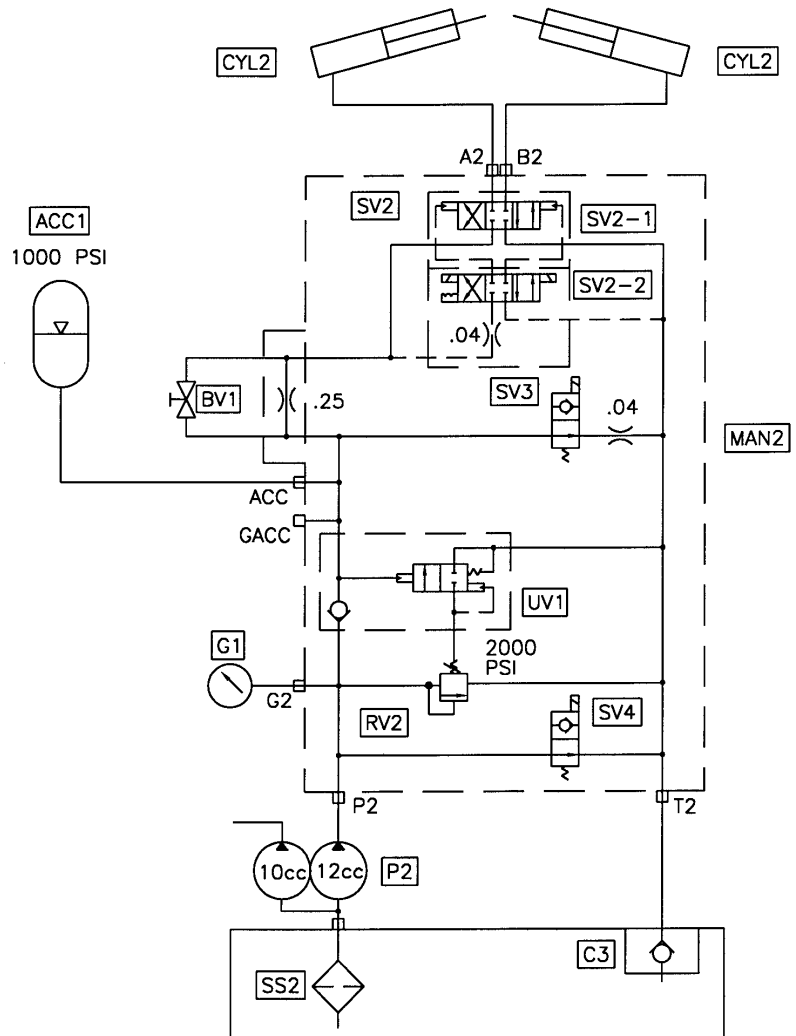
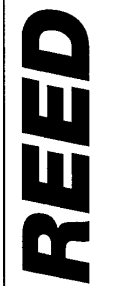
SCMTC

FIGURE 03  
PAGE 03

B & C SERIES SWING TUBE HYDRAULIC  
SCHEMATIC, DUAL SHIFT CYLINDER

DATE  
11/7/01

REV.  
PART NO.  
86706



CODE	DESCRIPTION	PART NO.	QTY.
P2	Gear Pump, Parts, Group 40		
CYL2	S Tube Single Shift Cylinder	86220	2
MAN2	Manifold S Tube Circuit	85249	1
SV2	Solenoid Valve S Tube Circuit	85693	1
SV2-1	Solenoid Valve Main	85694	1
SV2-2	Solenoid Valve Pilot	85695	1
	Coil For SV2-2	85692	2
SV3	Solenoid Valve Cartridge	85699	1
	Coil For SV3	85700	1
SV4	Solenoid Valve Cartridge	85701	1
	Coil For SV4	85702	1
RV2	Relife Valve Cartridge	85703	1
UN1	Unloading Valve Cartridge	85704	1
BV1	Ball Valve	85705	1
AAC1	Accumulator	74515	1
	Accumulator, Bladder	74516	1
G2	Pressure Gauge 3000 PSI	70366	1
SS2	Magnetic Suction Strainer 1 1/4"	79247	1
C3	Check Valve	85574	1

REVISION:





**TRAILER MOUNTED PUMP MODEL B20  
HYDRAULIC HOSE KIT**

SCMTC

FIGURE 05  
PAGE 05

<b>HOSE KIT 87797</b>	
<b>Part No.</b>	<b>End #1</b>
85666-001	
85666-006	
85666-013	
85667-001	
85654-016	
85657-002	
85657-002	
85657-002	
85657-033	
85657-004	
85654-021	
85657-016	
85664-011	
85657-001	
85660-004	
85659-001	
85657-030	
85659-002	
85659-002	
85659-002	
85659-002	

**SUCTION HOSES - POWER TRAIN**

<b>Part No.</b>	<b>End #1</b>
	Tank Suction
	Tank Suction
	Tank Suction

**FUEL HOSES - 85363 FUEL TANK ASSY**

<b>Part No.</b>	<b>End #1</b>
	Fuel Tank Suction
	Fuel Filter "OUT"
74716	Engine

**CONTROL VALVE GROUP - 86329**

<b>Part No.</b>	<b>End #1</b>
85657-016	Bulkhead "P"
85658-011	Agitator Valve "A"
85658-010	Agitator Valve "B"

**HYD OUTRIGGER GROUP - 86334**

<b>Part No.</b>	<b>End #1</b>
85659-010	O/R Valve "A"
85659-010	O/R Valve "B"
85659-010	O/R Valve Tube "A"
85659-010	O/R Valve Tube "B"

**WATER PUMP - 86400**

<b>Part No.</b>	<b>End #1</b>
85657-021	Agitator Valve "PB"

REVISION:



**TRAILER MOUNTED PUMP MODEL B20  
CONTROL PANEL  
ELECTRICAL COMPONENTS (1 OF 2)**

SCMTC

FIGURE 06  
PAGE 06

Code	Description	Part No.	Qty.	Location
<b>SWITCHES</b>				
1S1	Key Switch		1	Control Panel
2S2	Toggle Switch, Horn		1	Control Panel
3S3	Toggle Switch, Local/Remote		1	Control Panel
3S4	Toggle Switch, Pump On/Reverse		1	Control Panel
3S5	Toggle Switch, Test A/B		1	Control Panel
3S6	E-Stop Switch		1	Control Panel
	Contact Block, 1NC for 3S6		1	Control Panel
3S7	E-Stop Switch		1	Remote Control
	Contact Block, 1NC for 3S7		1	Remote Control
3S8	Toggle Switch, Horn		1	Remote Control
3S9	Toggle Switch, Pump On/Reverse		1	Remote Control
<b>RELAYS</b>				
1K1	Relay, Engine Start	85348	1	Engine
<b>LIGHTS</b>				
1L1	Light, Green, Control On	85355	1	Control Panel
1L2	Light, Red, Oil Temperature	73775	1	Control Panel
1L3	Light, Red, Coolant Temperature	73775	1	Control Panel
1L4	Light, Red, Oil Pressure	73775	1	Control Panel
1L5	Light, Red, Alternator	73775	1	Control Panel
	Bulb for 1L2, 1L3, 1L4, 1L5	72022	4	Control Panel
2L6	Bulb, E-Stop	85344	1	Control Panel
2L7	Light, Green, Local	85355	1	Control Panel
3L8	Light, Yellow, Remote	85356	1	Control Panel
3L9	Light, Green, Pump On	85355	1	Control Panel
3L10	Light, Green, Reverse	85355	1	Control Panel
3L11	Bulb, E-Stop	85344	1	Remote Control
3L12	Light, Green, Pump On	85355	1	Remote Control
<b>GAUGES</b>				
1G1	Hour Meter	74240	1	Control Panel
1G2	Tachometer	78687	1	Control Panel
1G3	Coolant Temperature Gauge	78203	1	Control Panel

REVISION:



**TRAILER MOUNTED PUMP MODEL B20  
CONTROL PANEL  
ELECTRICAL COMPONENTS (2 OF 2)**

SCMTC

FIGURE 06  
PAGE 07

Code	Description	Part No.	Qty.	Location
<b>FUSES</b>				
1F1	Fuse, 25A	800447	1	Control Panel
1F2	Fuse, 20A	800448	1	Control Panel
1F3	Fuse, 5A	90392	1	Control Panel
2F4	Fuse, 10A	800449	1	Control Panel
2F5	Fuse, 10A	800449	1	Control Panel
2F6	Fuse, 5A	90392	1	Control Panel
2F7	Fuse, 5A	90392	1	Control Panel
2F8	Fuse, 10A	800449	1	Control Panel
	Fuse Block, 8 Way	85354	1	Control Panel
<b>SOLENOID VALVE COILS</b>				
1Y1	Coil, Fuel Solenoid	Deutz	1	Engine
1Y2	Coil, Accumulator Bypass	85700	1	S-Tube Manifold
1Y3	Coil, S-Tube Bypass	85702	1	S-Tube Manifold
1Y4	Coil, Agitator Bypass	73184	1	Hyd. Tank
2Y5	Coil, Cylinder "B"	85692	1	S-Tube Manifold
2Y6	Coil, Cylinder "A"	85692	1	S-Tube Manifold
2Y7	Coil, S-Tube Shift "A"	85692	1	Pump Manifold
2Y8	Coil, S-Tube Shift "B"	85692	1	Pump Manifold
	Plugs for 1Y2 thru 2Y8	74597	7	Manifolds
<b>MISCELLANEOUS</b>				
2BB1	Black Box, Pump Control	85334	1	Control Box
2BB2	Black Box, E-Stop Logic	85596	1	Control Box
2P1	Proximity Switch, Cyl "B"	77998	1	Water Box
2P2	Proximity Switch, Cyl "A"	77998	1	Water Box
2H1	Horn	800347	1	Control Box
3R1	Resistor, 100 Ohm	72777	1	Remote Control
<b>CONNECTORS</b>				
X1	Connector Insert, 24 Pin, Female	78696	1	Control Box
X1	Connector Base	78697	1	Control Box
X1	Connector Insert, 24 Pin, Male	78695	1	Harness
X1	Connector Hood	800424	1	Harness
X2	Terminal Block	72820	8	Control Box
X3	Connector Insert, 10 Pin, Female	79963	1	Control Box
X3	Connector Base	79965	1	Control Box
X3	Connector Insert, 10 Pin, Male	79964	1	Remote Control

REVISION:

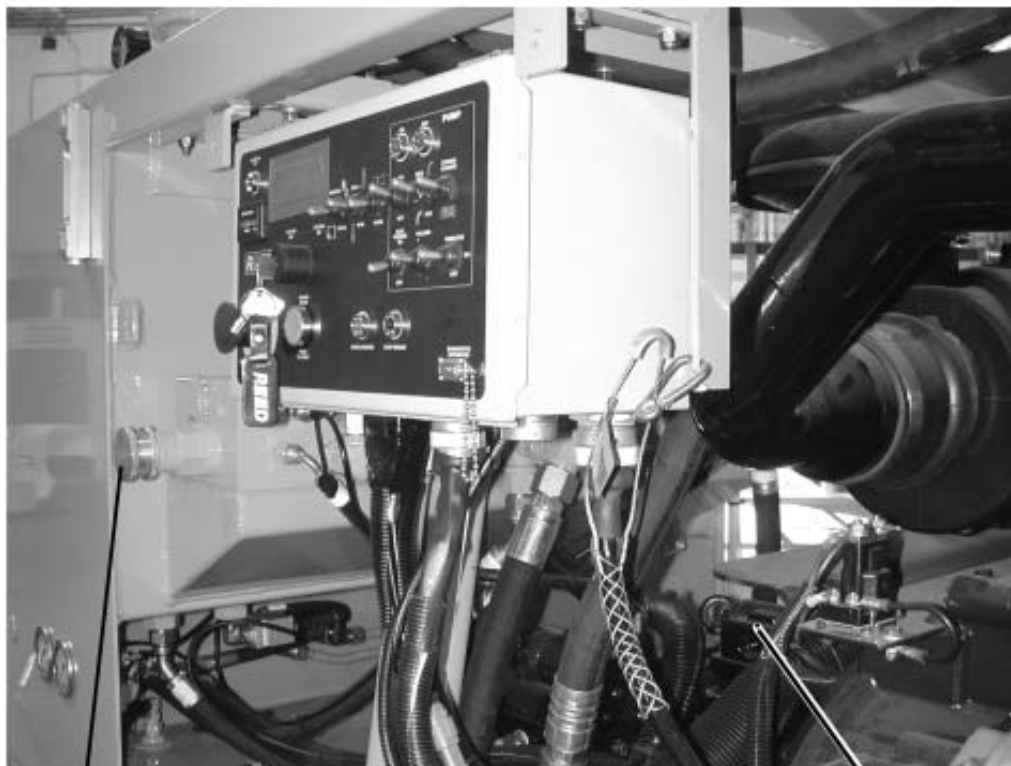
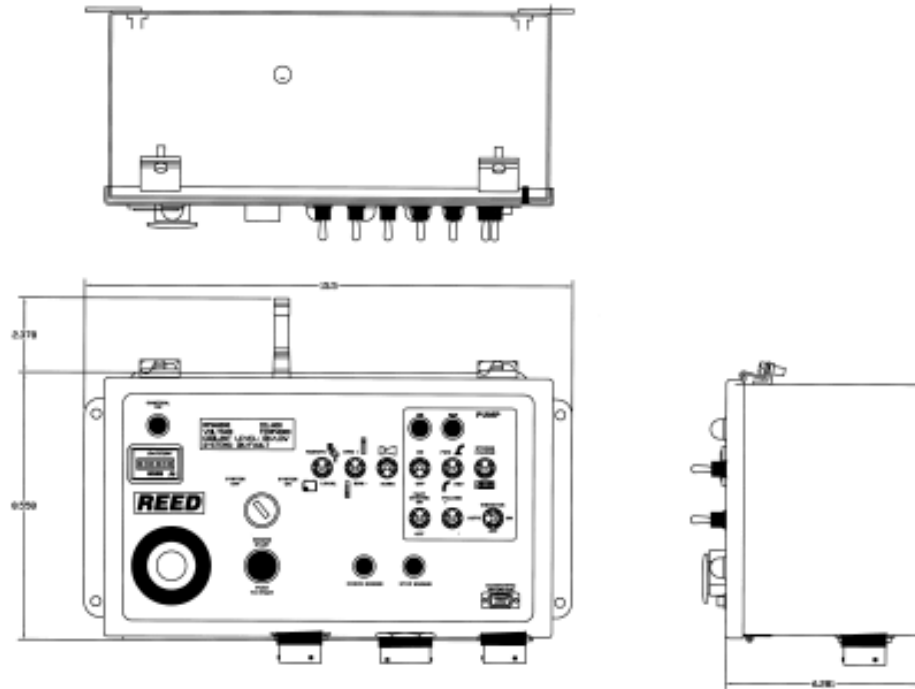




**TRAILER MOUNTED PUMP MODEL B20  
CONTROL PANEL  
ELECTRICAL COMPONENTS**

SCMTC

FIGURE 06  
PAGE 09



**CONTROL BOX WITH COVER REMOVED**

VOLUME CONTROL

MAIN HYDRAULIC PUMP

REVISION:

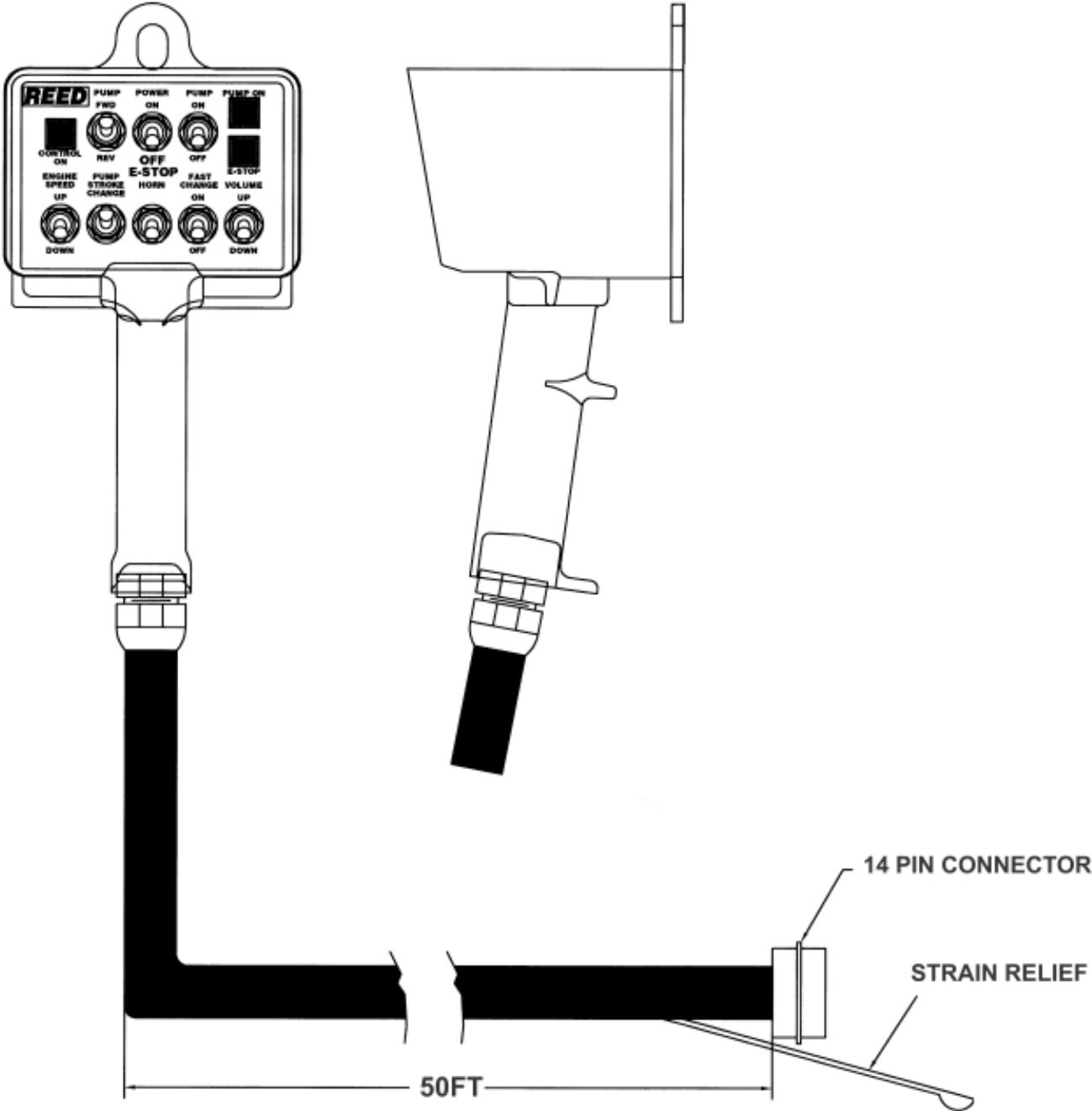


TRAILER MOUNTED PUMP MODEL *B20*  
CABLE REMOTE CONTROL  
ELECTRICAL COMPONENTS

SCMTC

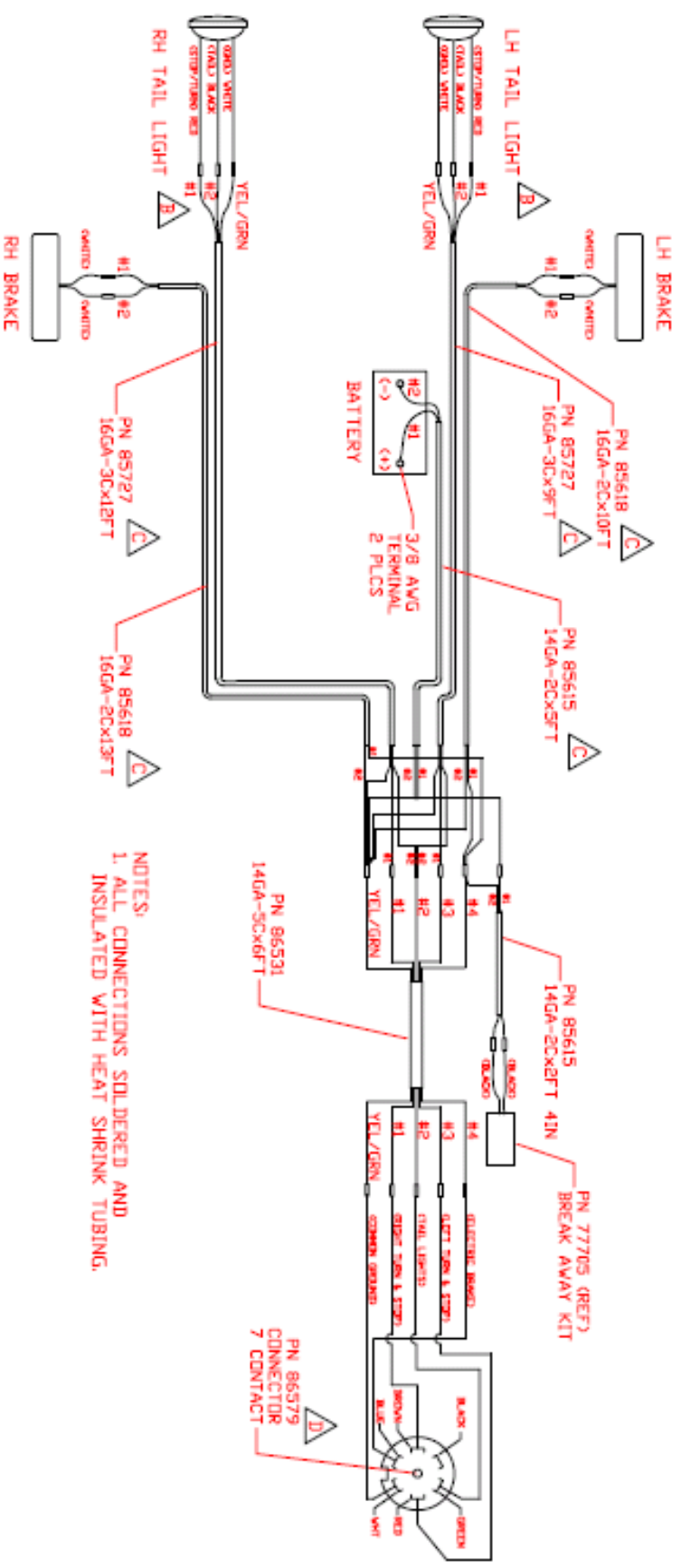
FIGURE 07  
PAGE 10

CONTROL BOX PENDANT - CABLE REMOTE CONTROL UNIT - PN 87347-1



REVISION:



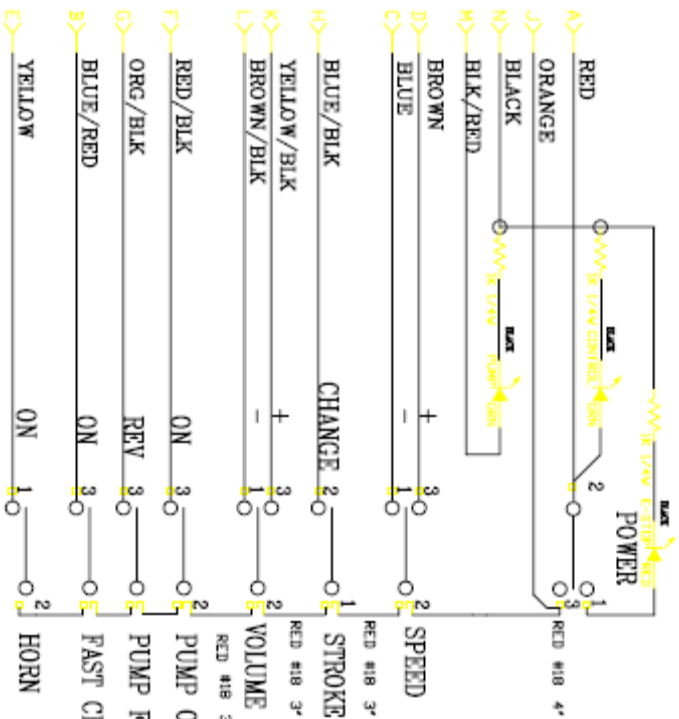


NOTES:  
 1. ALL CONNECTIONS SOLDERED AND INSULATED WITH HEAT SHRINK TUBING.

<b>REED</b>		ELECTRICAL SCHEMATIC		B-SERIES	
TRAVELING NO.	REV	DATE			
86533	D	3/10/01	B-SERIES		
			SCMTC		
			FIGURE09		

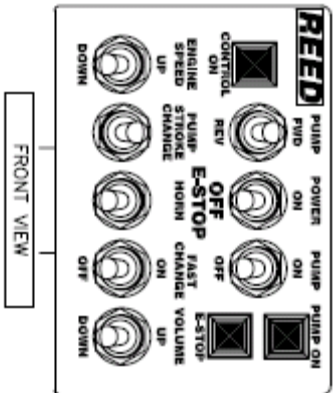
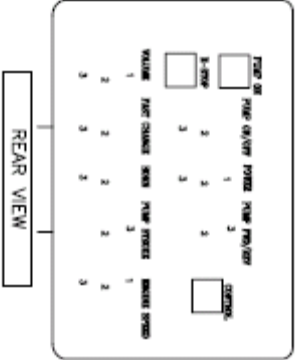






50 FEET 16 COND.  
 P/N 020-050-1618  
 SO THROUGH  
 COMP. FITTING  
 CUT JACKET TO 6" INSIDE TER BOX  
 CUT JACKET TO 1.5" ON THE OPPOSITE END  
 SHRINK WRAP CONNECTOR TO CABLE

PIGGY BACK PUSHON  
 STRAIGHT PUSHON



VENDOR: KAR-TECH  
 VENDOR PN: 41-030-4-B-8  
 WIRED REMOTE PENDANT WIRING DIAGRAM

<b>REED</b>	DRAWING NO.	REV	DATE	PENDANT-CONTROL-BOX ELECTRICAL-SCHEMATIC	B-SERIES SCMTC FIGURE12
	87347-1	B	6/23/07		

