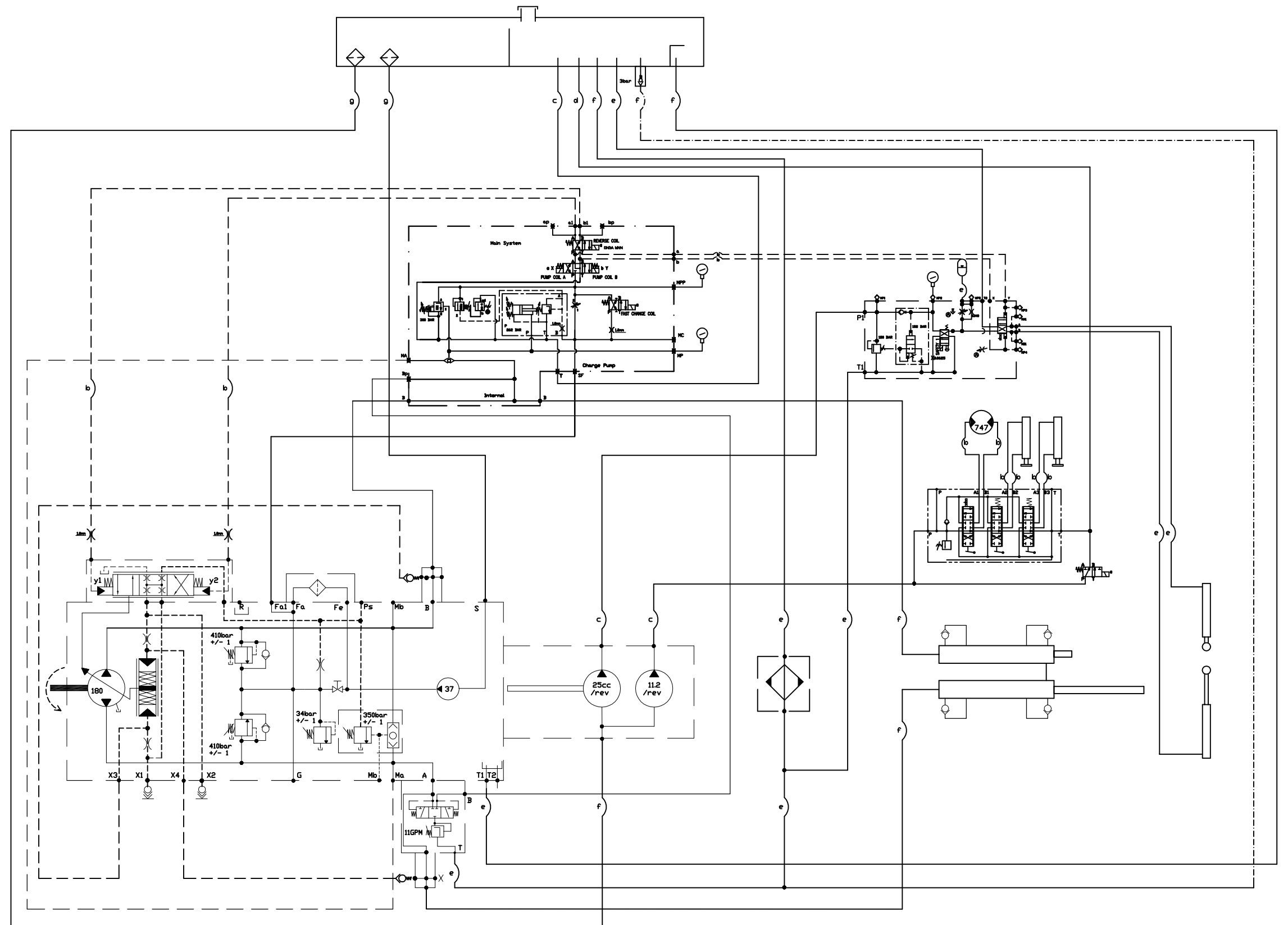


REED

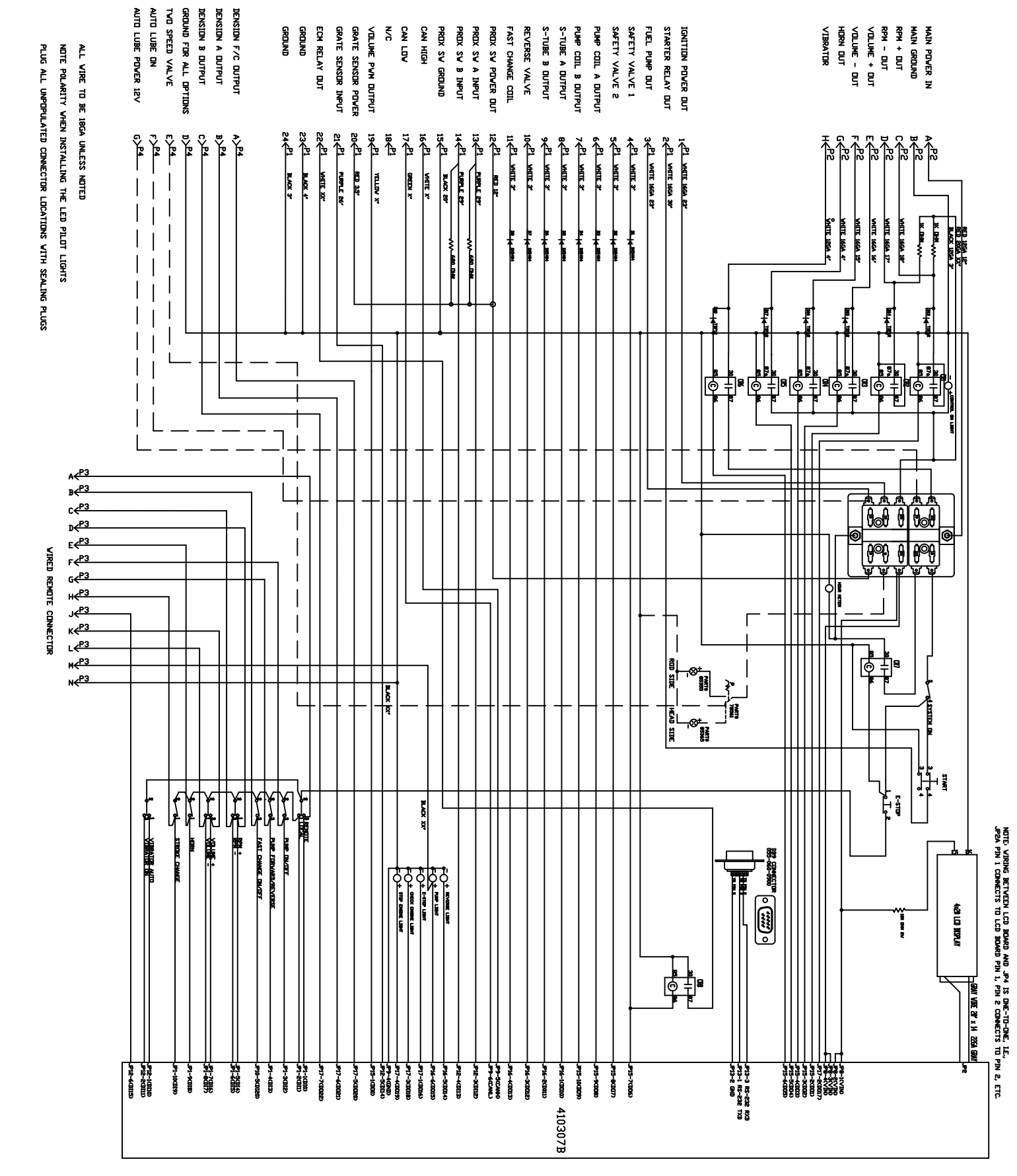
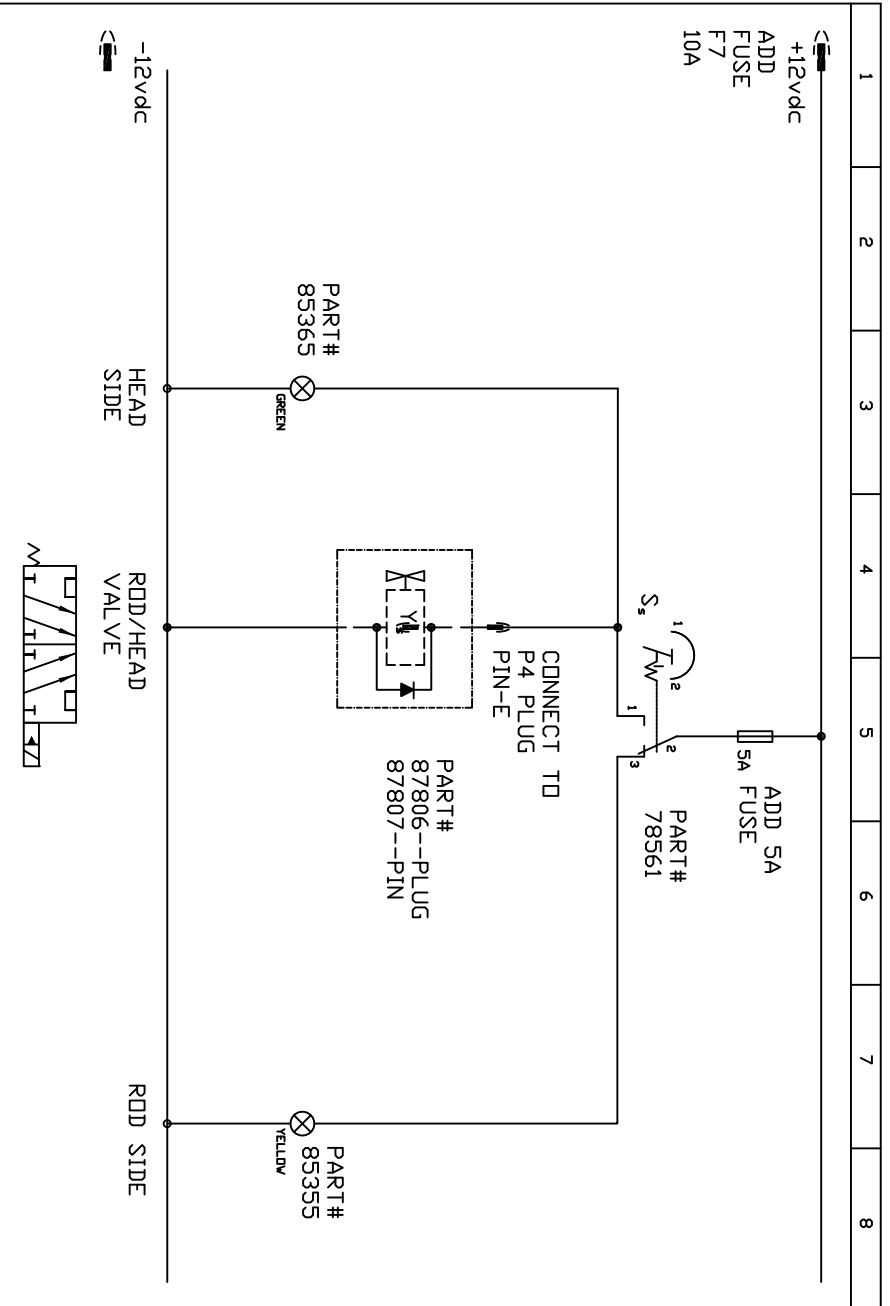
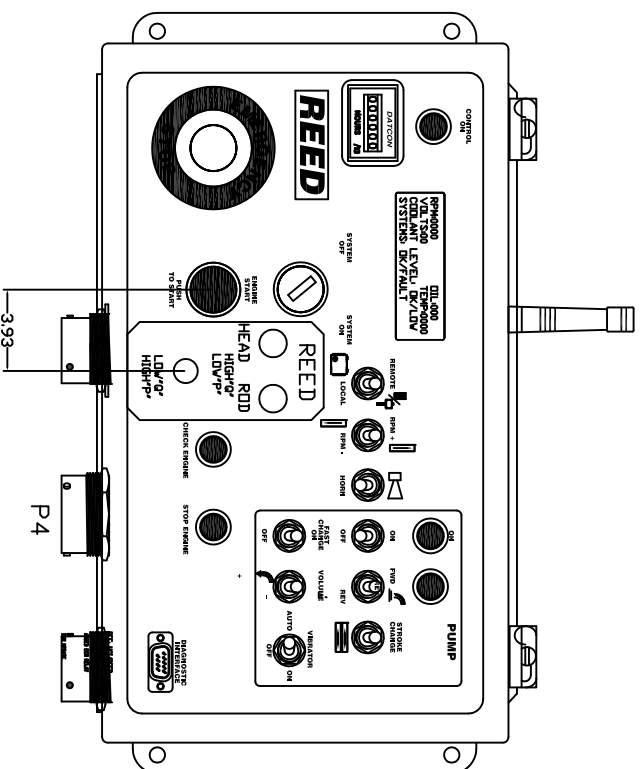
180CC REXROTH C50SS/C70SS/C90S
HYDRAULIC SCHEMATIC
C50SS/C70SS/C90S
PAGE 1 of 1

DRAWING NO. 87426-1
REV
DATE 7/13/05



Letter	Size	Letter	Pressure	Pump
a	1/4	PP	0-19bar	Charge
b	3/8	MP1	350bar	Main
c	1/2	P2	32bar	Charge
d	3/4	CP	32bar	Charge
e	1	X1	0-30bar	Charge
f	1 1/4	X2	0-30bar	Charge
g	1 1/2			

SCHEMATIC-UPDATED BY: DREMUS 1/11/2007



NOTE: WIRING BETWEEN LCD BOARD AND P4 IS ONE-TO-ONE, I.E. P4 PIN 1 CONNECTS TO LCD BOARD PIN 1, PIN 2 CONNECTS TO PIN 2, ETC.

REV	DATE	DESCRIPTION
1	12-15-98	ISSUE FOR PRODUCTION
2	08-28-07	ISSUE FOR PRODUCTION
3	08-28-07	CHANGED TO LED PILOT LIGHTS
4	08-14-07	ISSUE FOR PRODUCTION
5	08-14-07	ISSUE FOR PRODUCTION
6	08-14-07	ISSUE FOR PRODUCTION
7	08-14-07	ISSUE FOR PRODUCTION
8	08-14-07	ISSUE FOR PRODUCTION
9	08-14-07	ISSUE FOR PRODUCTION
10	08-14-07	ISSUE FOR PRODUCTION
11	08-14-07	ISSUE FOR PRODUCTION
12	08-14-07	ISSUE FOR PRODUCTION

KAR-TECH
 Deafield, WI 53018

REV 1
 DATE 12-15-98
 DESCRIPTION ISSUED FOR PRODUCTION

REV	DATE	DESCRIPTION OF CHANGE	BY

REVISIONS

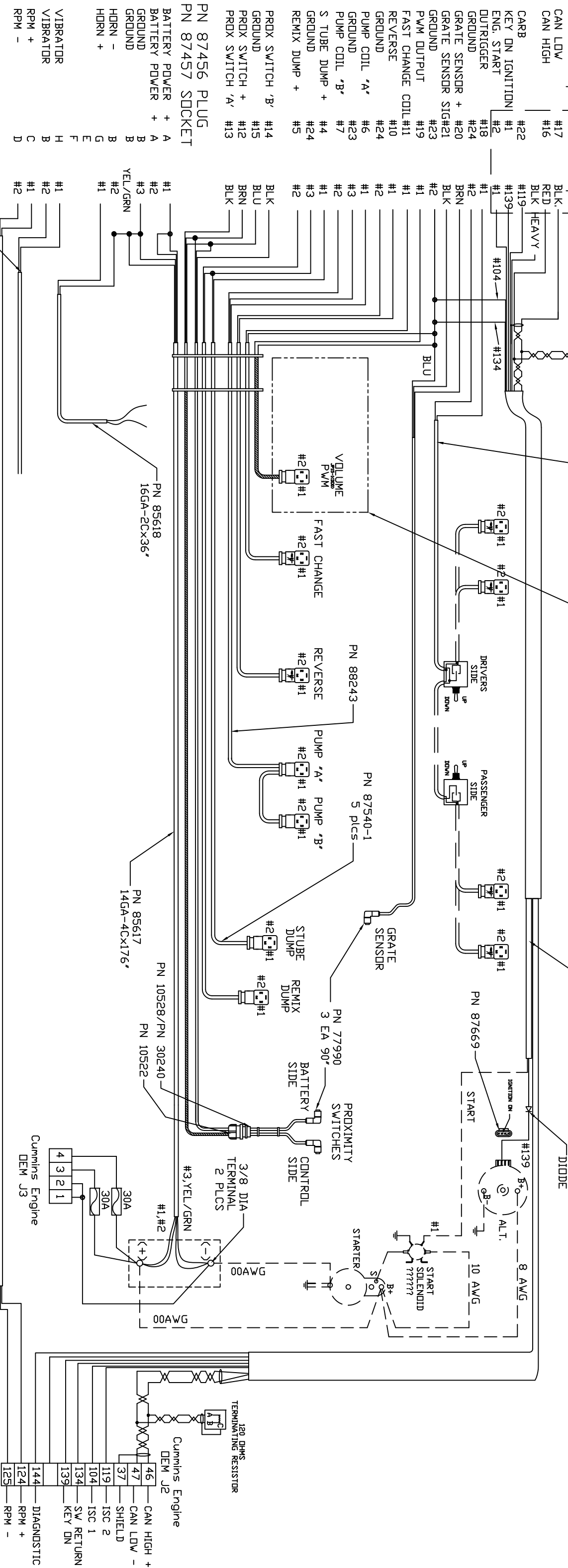
REED
 CONCRETE PLACING EQUIPMENT
 CHIND, CA 91710

TITLE		DD NOT SCALE DRAWING	UNLESS OTHERWISE SPECIFIED, DIMENSIONS ARE IN INCHES.
TITLE		TOLERANCES:	XX TOL1
ELECTRIC-DIAGRAM-C90SDD-V00		XXX TOL2	FRACTION TOL3
MATERIAL		ANGLE TOL4	
THIS DRAWING IS THE PROPERTY OF REED MANUFACTURING AND IS LOANED WITHOUT CONSIDERATION OTHER THAN THE BORROWER'S AGREEMENT THAT IT SHALL NOT BE REPRODUCED, COPIED, LOANED, OR DISPOSED OF, DIRECTLY OR INDIRECTLY, NOR USED FOR ANY PURPOSE OTHER THAN THAT FOR WHICH IT IS SPECIFICALLY FURNISHED.		DRAWN DR	3/24/08
PART NUMBER			
87904			
SHEET			

PN BW10146 HOOD
 PN BW10145 INSERT
 PN BW10147 PINS
 24 PIN WIRE PLUG NUMBERS

CHANGED PLUG PIN CONNECTIONS
 PIN #3, 8, 9, 19 NOT USED

VOLUME OPTION #2
 ADD TO THE DRAWING
 AND WE USE PIN 19 FOR THIS OPTION
 THIS OPTION STARTED FROM
 SN-2898 AND UP



PN 85615
 14GA-2C

PN 85618
 16GA-2Cx36'

PN 85617
 14GA-4Cx176'

PN 10528/PN 30240
 PN 10522

UNLESS OTHERWISE SPECIFIED, DIMENSIONS ARE IN INCHES AND TOLERANCES ARE:			
FRACT	DECIMAL	ANGLE	
1/32	.030	1/2°	
DD NOT SCALE DRAWING			
REED			
TITLE WIRING HARNESS, C-SERIES, HYD CYCLING		CONCRETE PLACING EQUIPMENT CHIND, CA 91710	
MATERIAL			
PART NUMBER 87562-2A		REV A	
THIS DRAWING IS THE PROPERTY OF REED MANUFACTURING AND IS LOANED WITHOUT CONSIDERATION OTHER THAN THE BOROYERS AGREEMENT THAT IT SHALL NOT BE REPRODUCED, COPIED, LOANED, OR DISPOSED OF, DIRECTLY OR INDIRECTLY, NOR USED FOR ANY PURPOSE OTHER THAN THAT FOR WHICH IT IS SPECIFICALLY FURNISHED.			
REVISONS		SHEET ___ OF ___	
LTR	DATE	ENGINEERING CHANGE NOTICE #	BY

REED

C50hps

DRAWING NO.	REV	DATE
-------------	-----	------

PAGE 1 of 1