

TEACH-IN: Individual setting of proportional channels (basic setting) at NANO-L transmitter. Waitzinger version. (Please refer to the scope of supply of your radio remote control.)
The output signals of the proportional channels can be individually programmed by the transmitter.



Activate programming mode



Select analog function



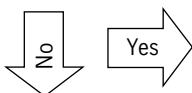
Save "contact point"



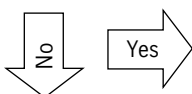
Save maximum speed



Program opposite direction ?



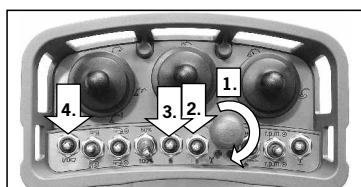
Programming of next function ?



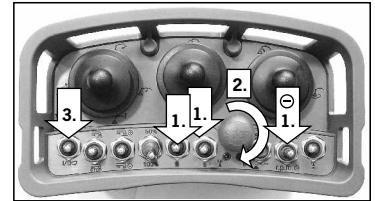
Check the values

Shut down the programming mode

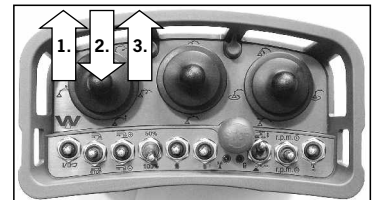
Restore the factory settings / default values



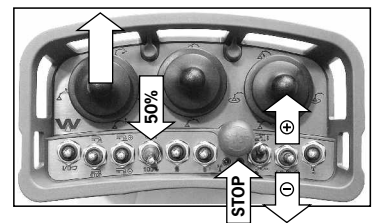
1 Set all proportional channels to zero position. To activate the programming mode press and hold the "R.P.M.⊖" and the "MOTOR ON" and "MOTOR OFF" switches and release the EMERGENCY STOP switch. As a confirmation the horn will be activated briefly twice in a row. Then press the "ON/HORN" switch.



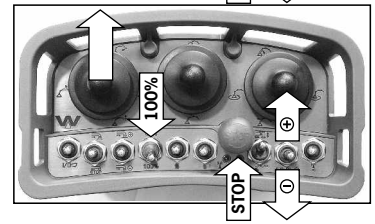
2 To determine which proportional function should be programmed, it is sufficient to turn briefly the appropriate joystick fully in the direction of this function, back to zero position and then turn and hold the joystick fully in this direction again.



3 Now the "50%/100%" switch has to be set into the "50%" position. Keep the joystick fully deflected. The contact point can now be adjusted with the "R.P.M.⊖" or "R.P.M.⊕" switch (according to the customer's specifications). Auto storage by pressing the EMERGENCY STOP switch.



4 The "50%/100%" switch has to be set into the "100%" position. Keep the joystick fully deflected. The maximum speed can now be adjusted with the "R.P.M.⊖" or "R.P.M.⊕" switch (according to the customer's specifications). Auto storage by pressing the EMERGENCY STOP switch.



5 The opposite direction of this function can be programmed the same way immediately afterwards. See point **2** to **4**.

6 To program the next proportional channel, the "ON/HORN" key must be pressed once to continue at point **2**.

6 Only in the working mode it is possible to check the programmed values.

7 Press the EMERGENCY STOP switch.

Please note:

In the programming mode all functions are locked, except "ON/HORN" and each selected function.

Set all proportional channels to zero position. Release the EMERGENCY STOP switch. Wait till the radio connection is present. Press and hold the "MOTOR ON" switch. After 1 second press and hold the "MOTOR OFF" switch additionally. After 1 second press and hold the "ON/HORN" switch additionally. The factory settings / default values are restored automatically. As a confirmation the horn will be activated briefly four times in a row. After that press the "ON/HORN" switch to get into the working mode.