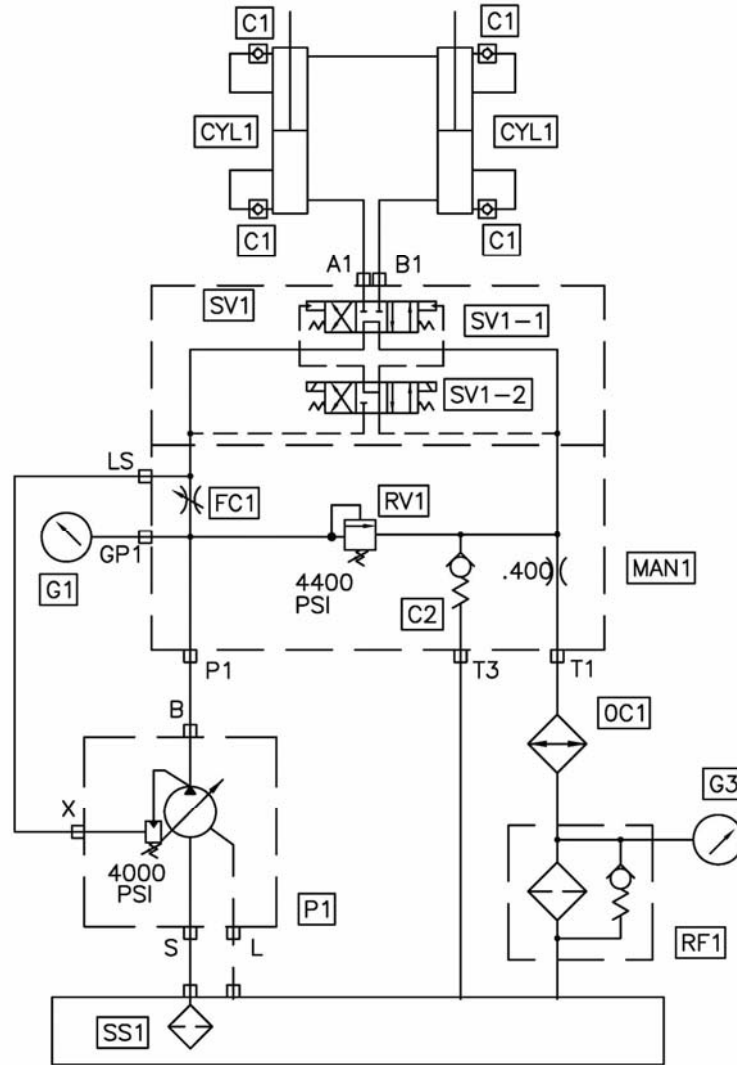


HYDRAULIC AND ELECTRICAL SCHEMATICS

B SERIES DRIVE CYLINDER CIRCUIT
HYDRAULIC SCHEMATIC



DATE
12/3/01

PART NO. REV.
86708 B

REED

CODE	DESCRIPTION	PART NO.	QTY.
P1	Main Pump		
CYL1	Hydraulic Drive Cylinder		
MAN1	Manifold Drive Cylinder Circuit	85248	1
SV1	Solenoid Valve, Drive Cylinder Circuit	85689	1
SV1-1	Valve Main	85690	1
	Seal Kit	74994	1
SV2-2	Solenoid Valve Pilot	85691	1
	Coil For SV2-2	85692	2
	Seal Kit	72313	1
RV1	Relief Valve Cartrige	85696	1
	Seal Kit	85696-SK	1
FC1	Flow Control Valve Cartrige	85697	1
	Seal Kit	85697-SK	1
C1	Check Valve	78961	4
	Check Valve Cartrige	85698	1
C2	Check Valve Cartrige	85698	1
	Seal Kit	85698-SK	1
G1	Pressure Gauge 6000 psi	74562	1
G3	Pressure Gauge Return	85575	1
OC1	Oil Cooler	85713	1
RF1	Return Filter	85282	1
	Return Filter Element	85283	1
	Seal Kit Return Filter	BW10241	1
SS1	Magnetic Suction Strainer 3"	800230	1

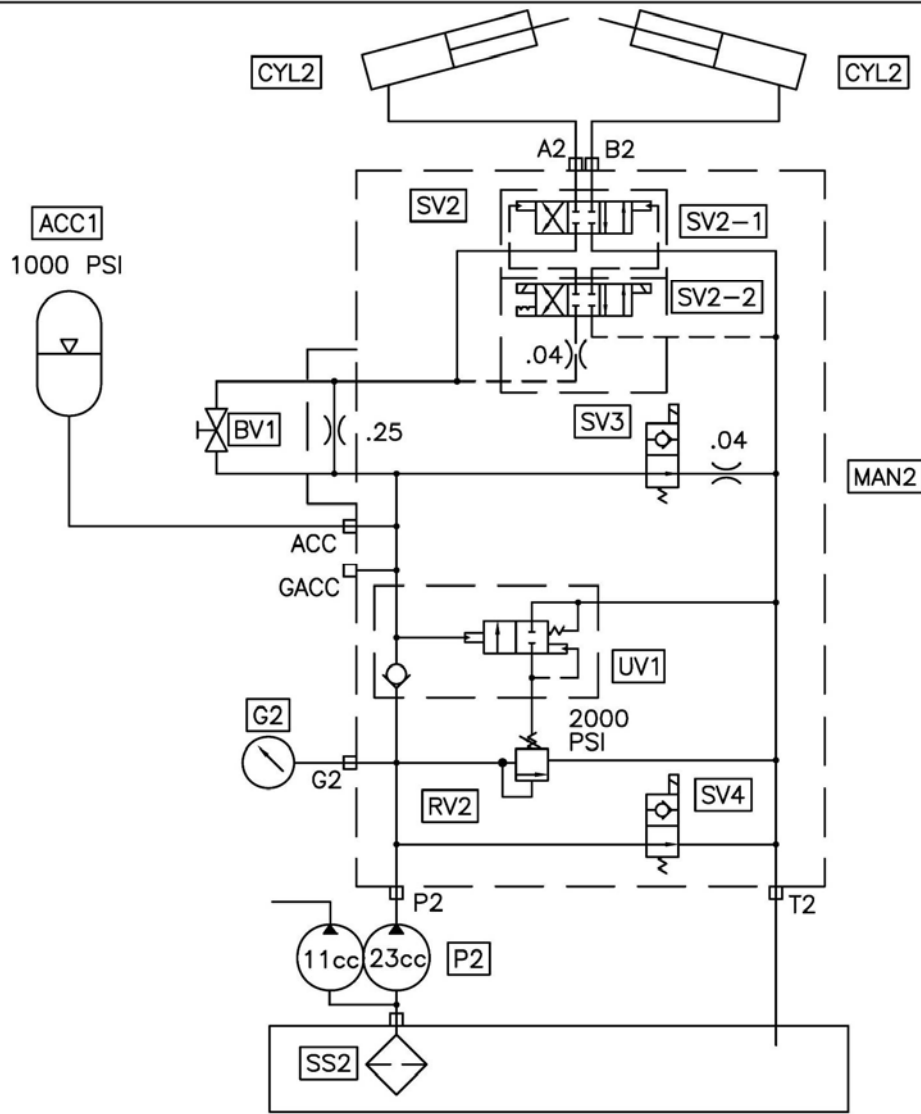
B SERIES SWING TUBE HYDRAULIC SCHEMATIC, DUAL SHIFT CYLINDER

DATE
11/7/01

REV.
B

PART NO.
86706

REED



CODE	DESCRIPTION	PART NO.	QTY.
P2	Gear Pump		1
CYL2	S Tube Single Shift Cylinder	86220	2
	Seal Kit	86220-SKTX	1
MAN2	Manifold S Tube Circuit	85249	1
SV2	Solenoid Valve S Tube Circuit	85693	1
SV2-1	Valve Main	85694	1
	Seal Kit	74994	1
SV2-2	Solenoid Valve Pilot	85695	1
	Seal Kit	72313	1
	Coil For SV2-2	85692	2
SV3	Solenoid Valve Cartridge	87246	1
	Coil For SV3	87247	1
SV4	Solenoid Valve Cartridge	87248	1
	Coil For SV4	87249	1
RV2	Relife Valve Cartridge	85703	1
UN1	Unlodng Valve Cartridge	85704	1
BV1	Ball Valve	85705	1
AAC1	Accumulator	74515	1
	Accumulator, Bladder	74516	1
	Seal Kit Accumulator, Bladder	85812	1
G2	Pressure Gauge 3000 PSI	70366	1
SS2	Magnetic Suction Strainer 1 1/4"	79247	1

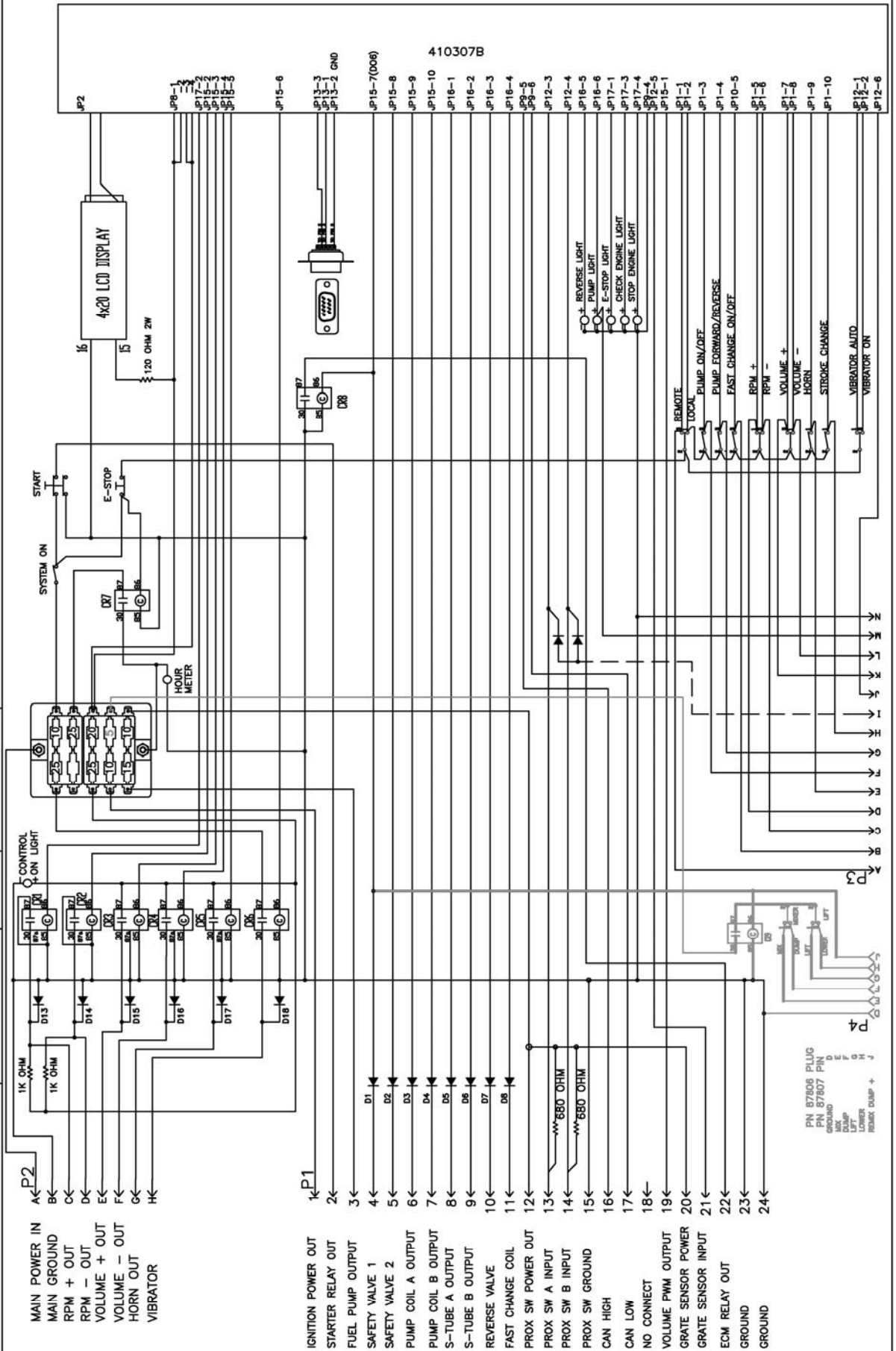
REV B-5/7/2009

REED

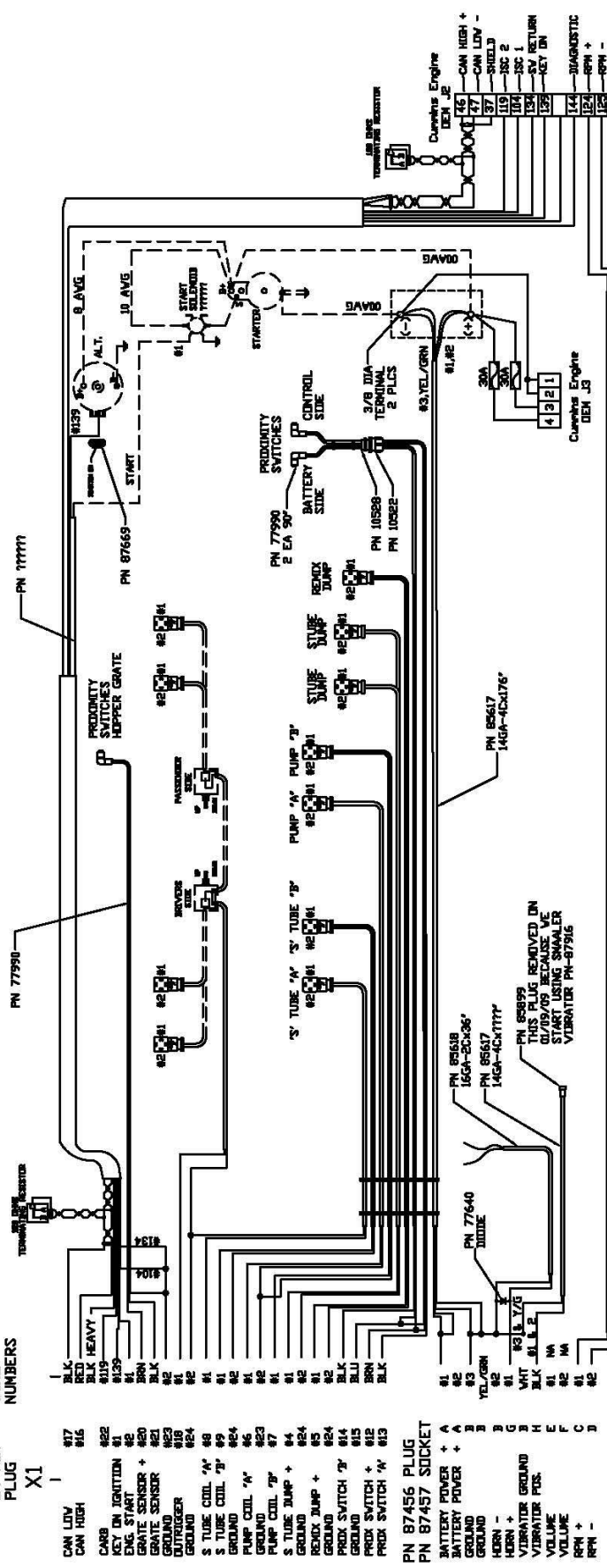
PART NO. 87909-2

REV. 7/30/10

B SERIES WIRING HARNESS
ELECTRIC CYCLING



PN BW10146 HOOD
 PN BW10145 INSERT
 PN BW10147 PINS
 24 PIN PLUG
 WIRE NUMBERS
 X1



HOPPER SAFETY GRATE OPTION 2/8/08

UNLESS OTHERWISE SPECIFIED, DIMENSIONS ARE IN INCHES AND TOLERANCES ARE:		TITLE		CONCRETE PLACING EQUIPMENT	
FRAC	DECIMAL	ANGLE	CHIND, CA 91710		
1/32	.030	1/2°	REED		
DO NOT SCALE DRAWING		MATERIAL		PART NUMBER	
BY	DATE	DRAWN		REV	
SK	6/1/10	APPVD		87734-2	
ENGINEERING CHANGE NOTICE #		REVISIONS		SHEET __ OF __	

THIS DRAWING IS THE PROPERTY OF REED MANUFACTURING AND IS LOANED WITHOUT CONSIDERATION OTHER THAN THE BORO'S AGREEMENT THAT IT SHALL NOT BE REPRODUCED, COPIED, LOANED OR DISPOSED OF, DIRECTLY OR INDIRECTLY, NOR USED FOR ANY OTHER THAN THAT FOR WHICH IT IS SPECIFICALLY FURNISHED.

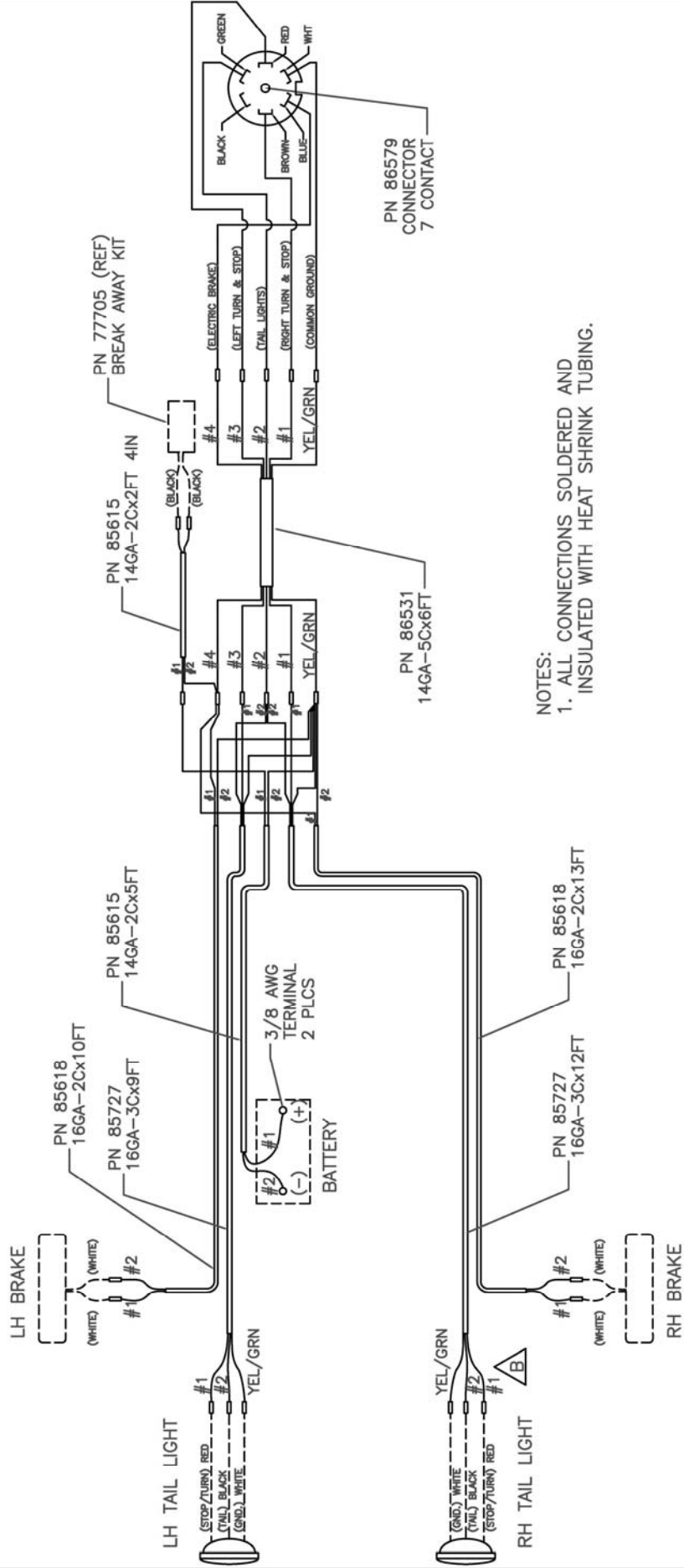
REED

PART NO.
86533

REV.
B

DATE
5/22/01

B SERIES
TRAILER HARNESS



NOTES:
1. ALL CONNECTIONS SOLDERED AND INSULATED WITH HEAT SHRINK TUBING.

