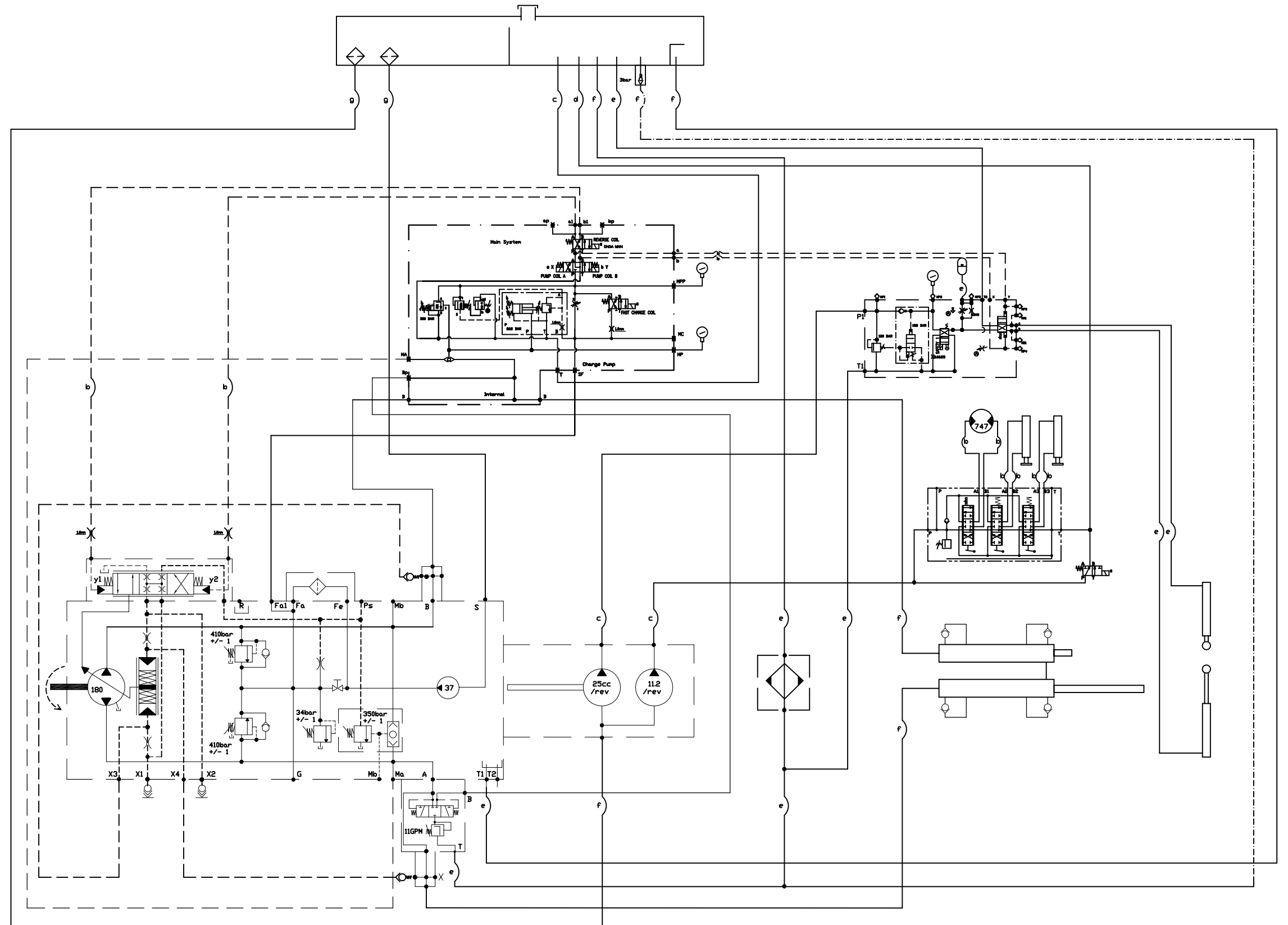


REED

180CC REXROTH C50SS/C70SS/C90S
HYDRAULIC SCHEMATIC
C50SS/C70SS/C90S
PAGE 1 of 1

DRAWING NO. 87426-1
REV
DATE 7/13/05



Letter	Size	Letter	Pressure	Pump
a	1/4	PP	0-19bar	Charge
b	3/8	MP1	350bar	Main
c	1/2	P2	32bar	Charge
d	3/4	CP	32bar	Charge
e	1	X1	0-30bar	Charge
f	1 1/4	X2	0-30bar	Charge
g	1 1/2			

SCHEMATIC-UPDATED BY: DREMUS 1/11/2007

REED

DRAWING NO.	REV	DATE

C50hps

PAGE 1 of 1