

## REED 4030 CONCRETE PUMP

### SECTION 10:

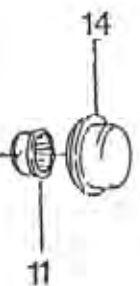
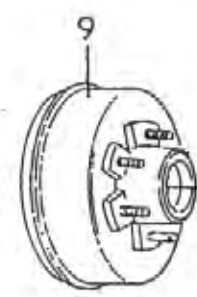
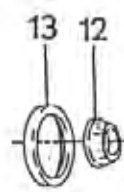
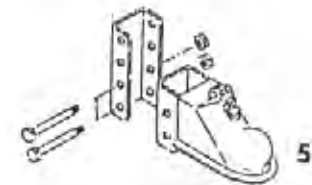
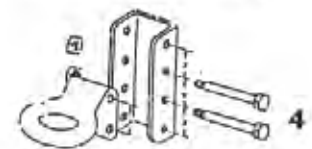
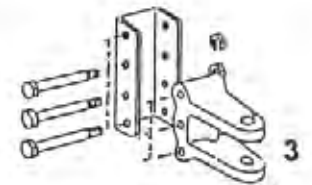
#### PARTS INFORMATION, WARRANTY & SERVICE

---

PAGE

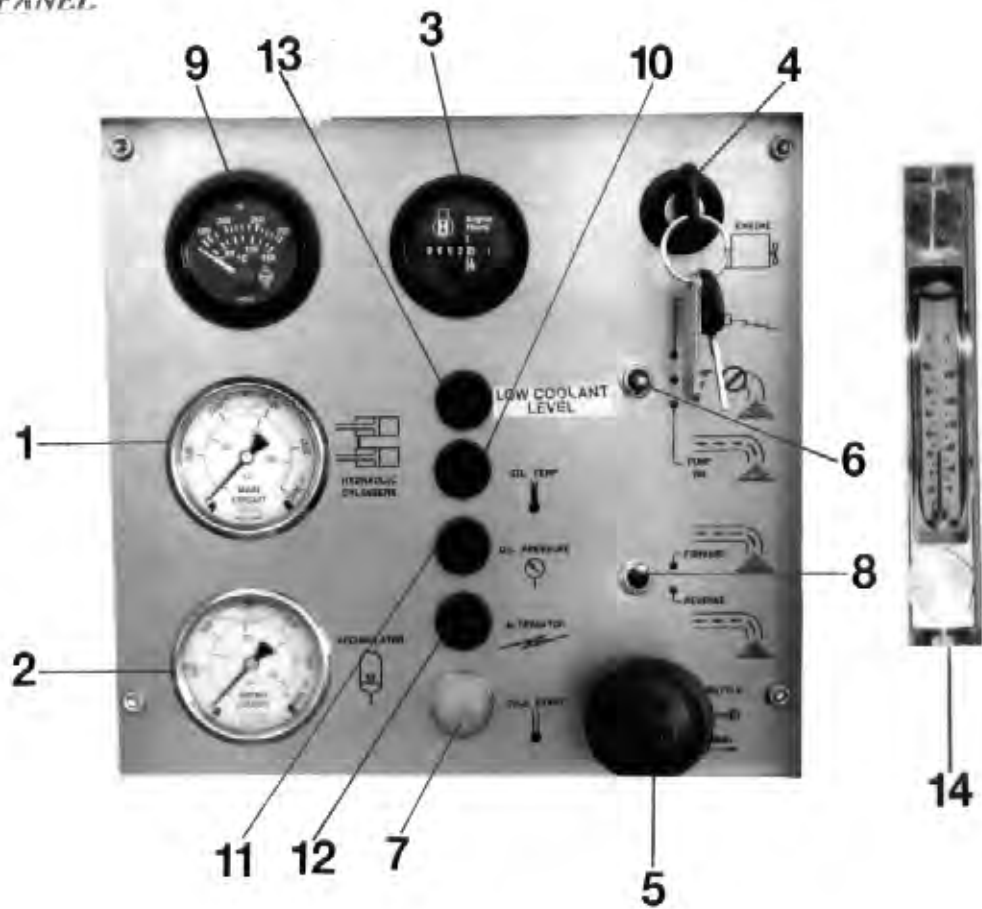
1	FRAME & AXLE ASSEMBLY
2	CONTROL PANEL
3	POWER TRAIN ASSEMBLY
4	HYDRAULIC PUMP AREA
5	HYDRAULIC VALVES
6	ACCUMULATOR
7	FLUSHBOX AREA
8	MAIN HYDRAULIC TANK AREA
9	CYLINDER END CAPS/FRONT ENCLOSURE
10	CONCRETE & HYDRAULIC CYLINDERS
11	SWING TUBE ASSEMBLY OUTLET HOPPER
12	AGITATOR ASSEMBLY

# FRAME & AXLE ASSEMBLY



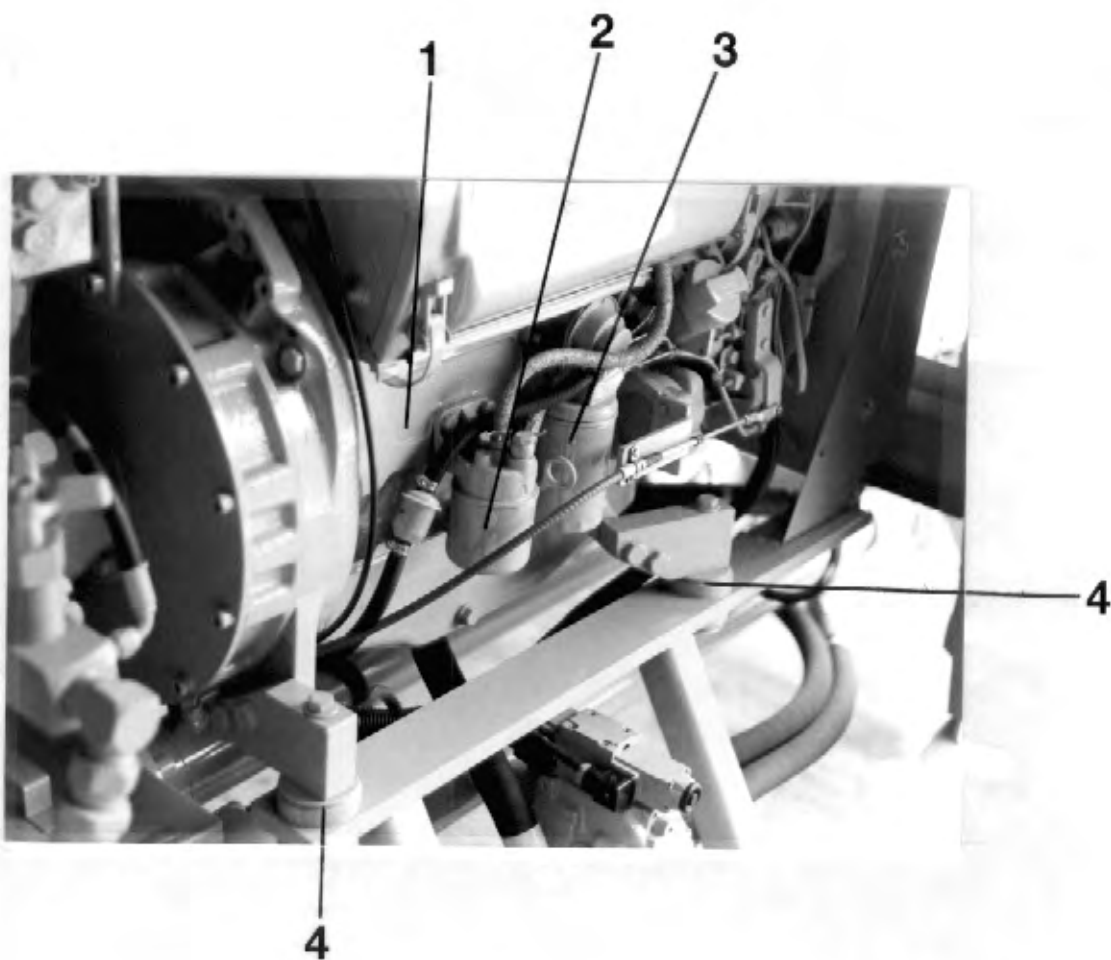
ITEM	DESCRIPTION	PART#	QTY/MCH
1	FRAME WELDMENT	77935	1
2	TOP WIND JACK	73103	1
3	CLEVIS	71050	1
4	LUNETTE EYE 3"	71051	1
5	COUPLER 2-5/16"	71099	1
6	AXLE	71005	1
7	SPRING ASSEMBLY	71087	2
8	WHEEL & TIRE	71066	2
9	BRAKE DRUM	71097	2
10	ELECTRIC BRAKE	71056	2
11	OUTER BEARING	71098	2
12	INNER BEARING	71094	2
13	GREASE SEAL	71095	2
14	DUST CUP	71199	2

*CONTROL PANEL*



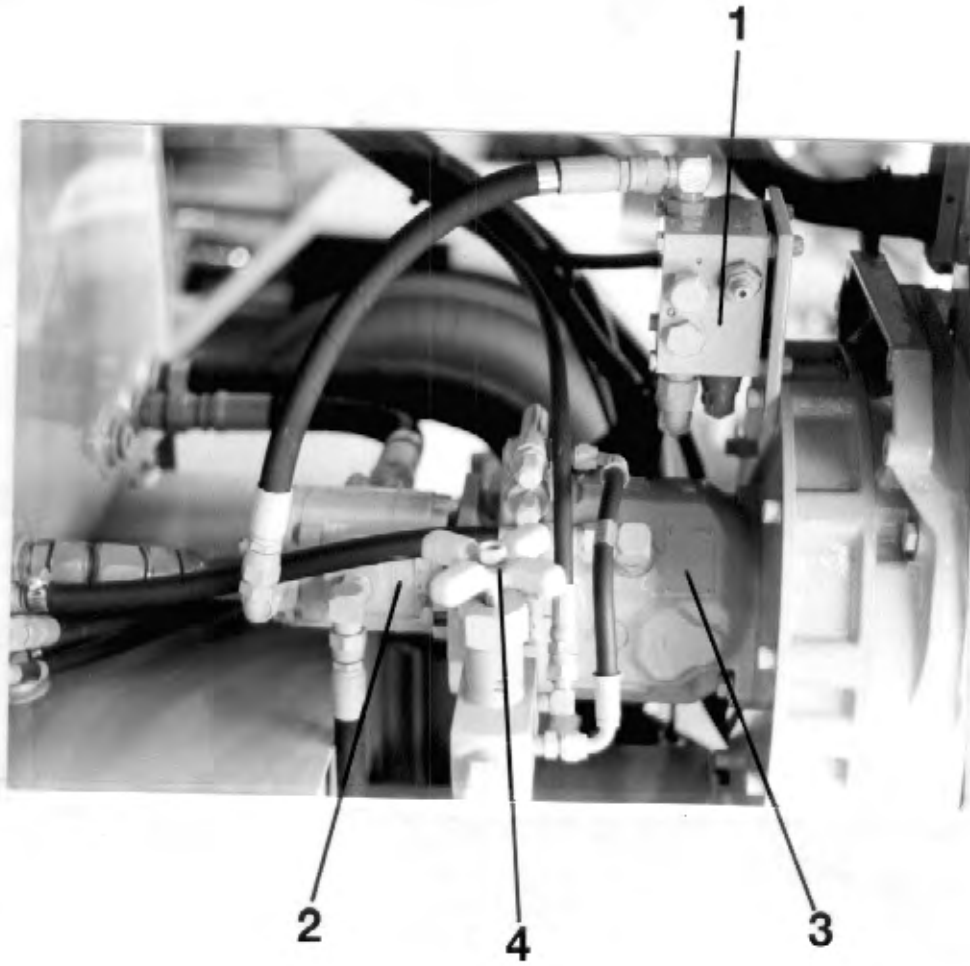
<u>ITEM</u>	<u>DESCRIPTION</u>	<u>PART#</u>	<u>QTY/MCH</u>
1	PRESSURE GAUGE MAIN CIRCUIT 5000 PSI	74562	1
2	PRESSURE GAUGE SWING CIRCUIT 3000 PSI	70366	1
3	HOURMETER	74240	1
4	IGNITION SWITCH	71154	1
5	THROTTLE CABLE	72810	1
6	ON-OFF-ON SWITCH	72965	1
7	SWITCH COLD START	72863	1
8	ON-OFF SWITCH	72963	1
9	COOLANT TEMP GAUGE	78203	1
10	RED LIGHT OIL TEMP WARNING	73775	1
11	GREEN LIGHT OIL PRESSURE WARNING	73776	1
12	AMBER LIGHT ALT. WARNING	73777	1
13	RED LIGHT COOLANT LEVEL WARNING	73775	1
14	HYDRAULIC OIL GAUGE	74509	1

POWER TRAIN ASSEMBLY



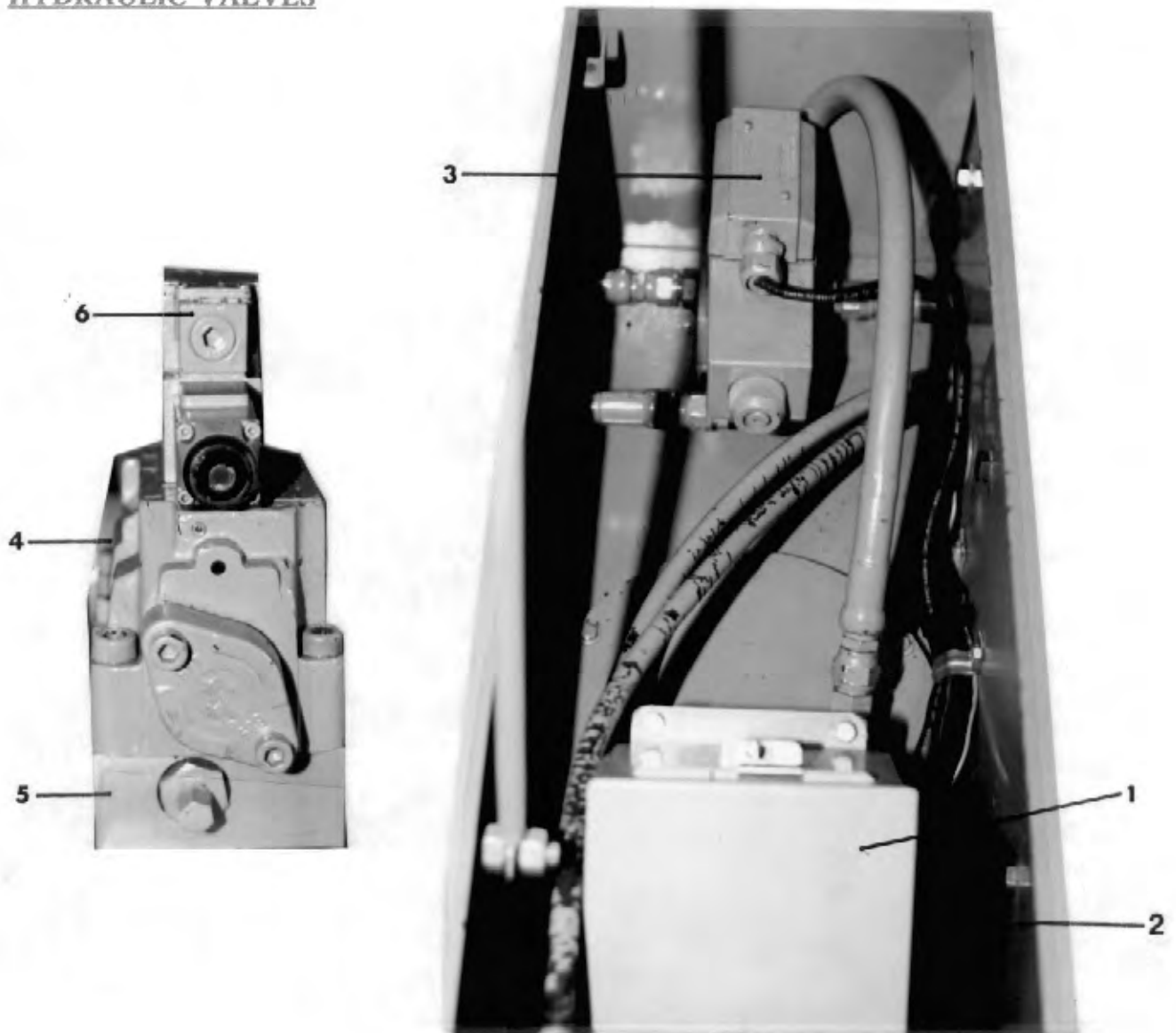
<u>ITEM</u>	<u>DESCRIPTION</u>	<u>PART#</u>	<u>QTY/MCH</u>
1	ENGINE	74230	1
2	FUEL FILTER	72960	1
3	OIL FILTER	72909	1
4	ENGINE MOUNT KIT	<u>74231</u>	1

HYDRAULIC PUMP AREA



<u>ITEM</u>	<u>DESCRIPTION</u>	<u>PART#</u>	<u>QTY/MCH</u>
1	UNLOADER MANIFOLD BLOCK	72803	1
2	AUXILIARY PUMP	72538	1
3	MAIN HYDRAULIC PUMP	74450	1
4	FLOW CONTROL VALVE	74607	1

HYDRAULIC VALVES



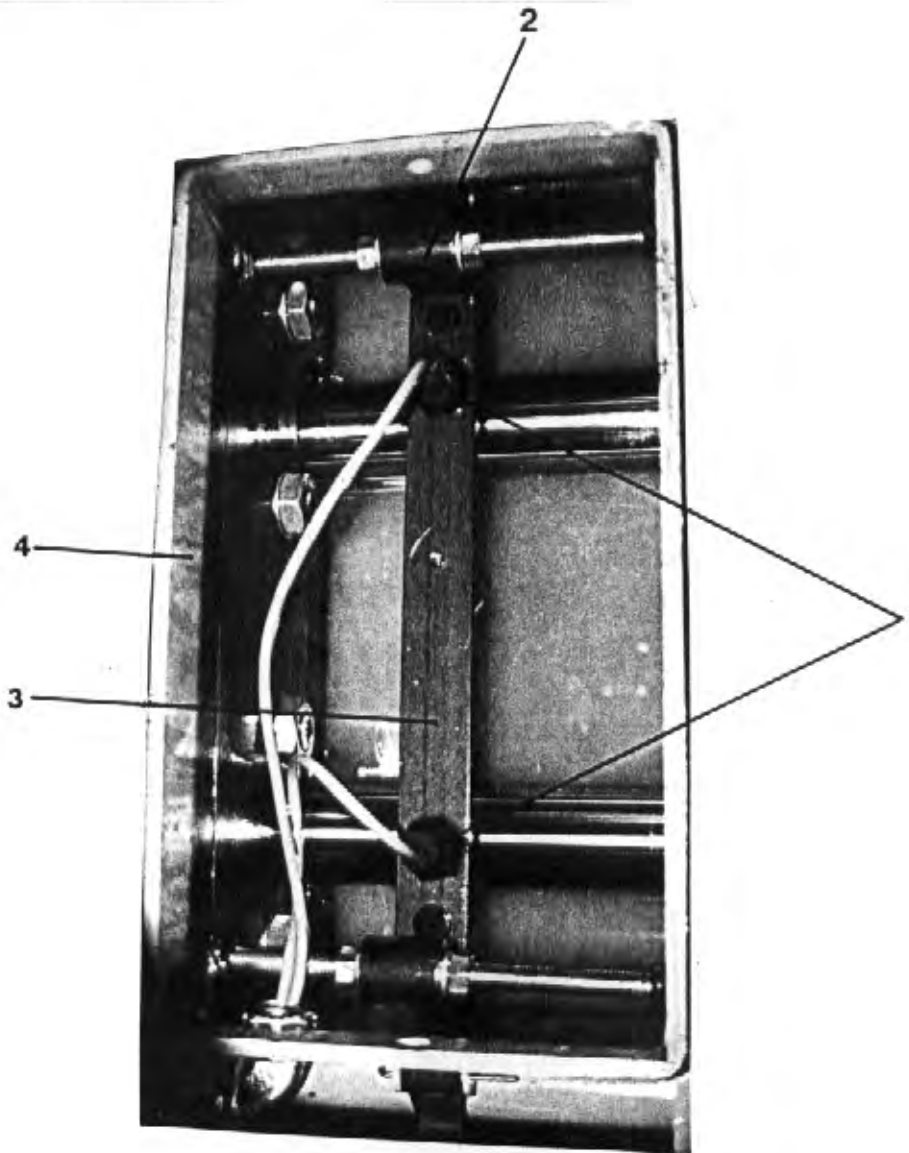
<u>ITEM</u>	<u>DESCRIPTION</u>	<u>PART#</u>
1	WIRING BOX	72893
2	BLACK BOX	70750
3	AA VALVE	72984
4	DIRECTIONAL VALVE	74935
5	SUB PLATE	74594
6	DOUBLE SOLENOID VALVE	74938

ACCUMULATOR



<u>ITEM</u>	<u>DESCRIPTION</u>	<u>PART#</u>	<u>QTY/MCH</u>
1	ACCUMULATOR	74515	1
2	U BOLT	70066	1
3	WASHER	12075	1
4	FILTER ELEMENT	73303	1

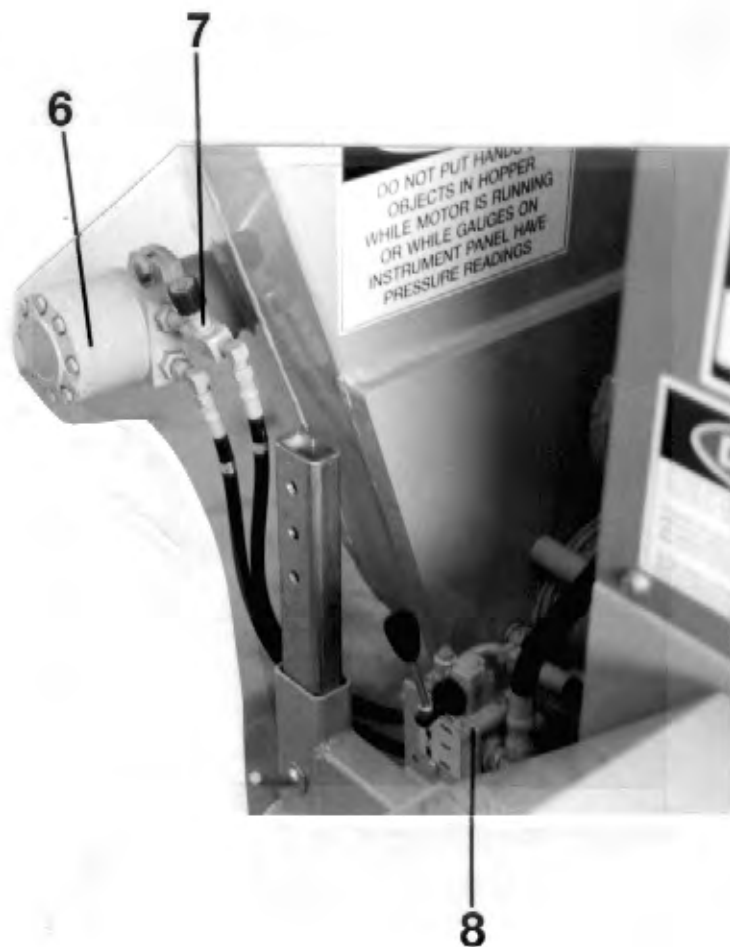
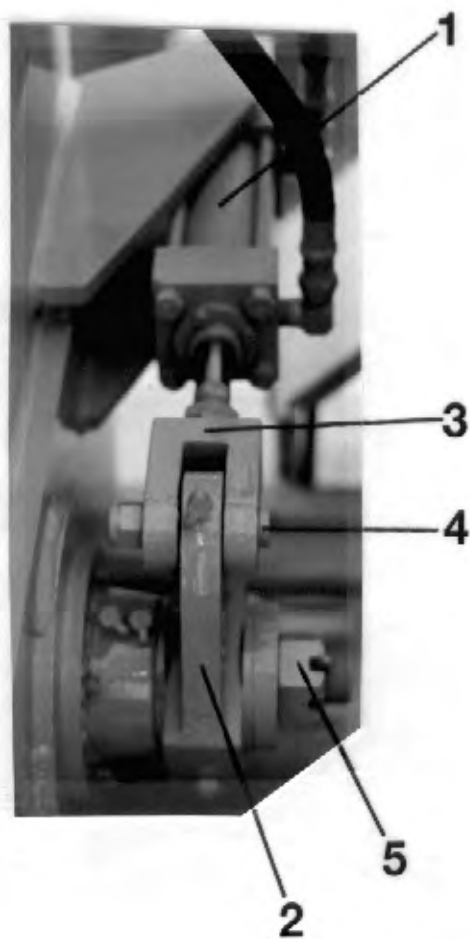
# FLUSHBOX AREA



<u>ITEM</u>	<u>DESCRIPTION</u>	<u>PART#</u>	<u>QTY/MCH</u>
1	PROXIMITY SENSOR	72961	2
2	MOUNTING ANGLE	72940	2
3	MOUNTING BAR	72941	1
4	FLUSHBOX	73498	1

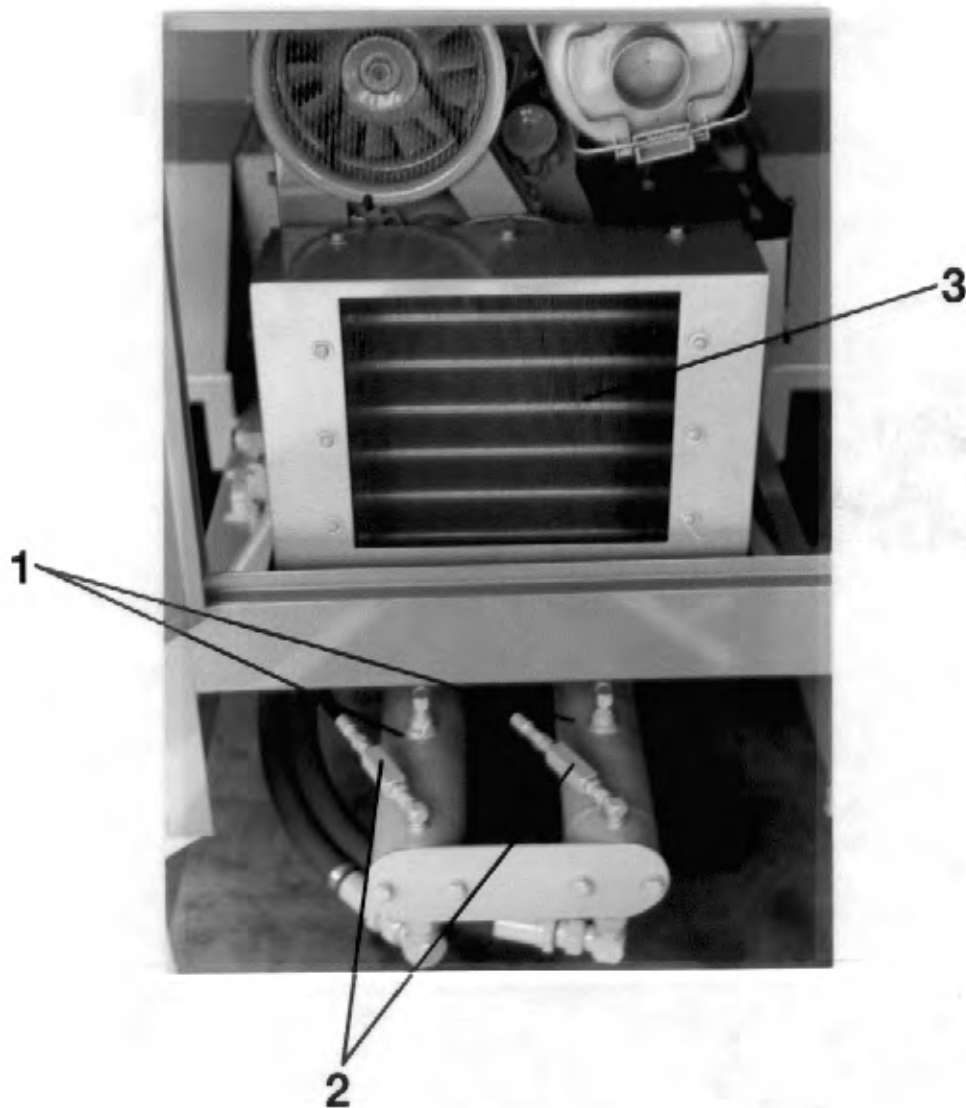


MAIN HYDRAULIC TANK AREA



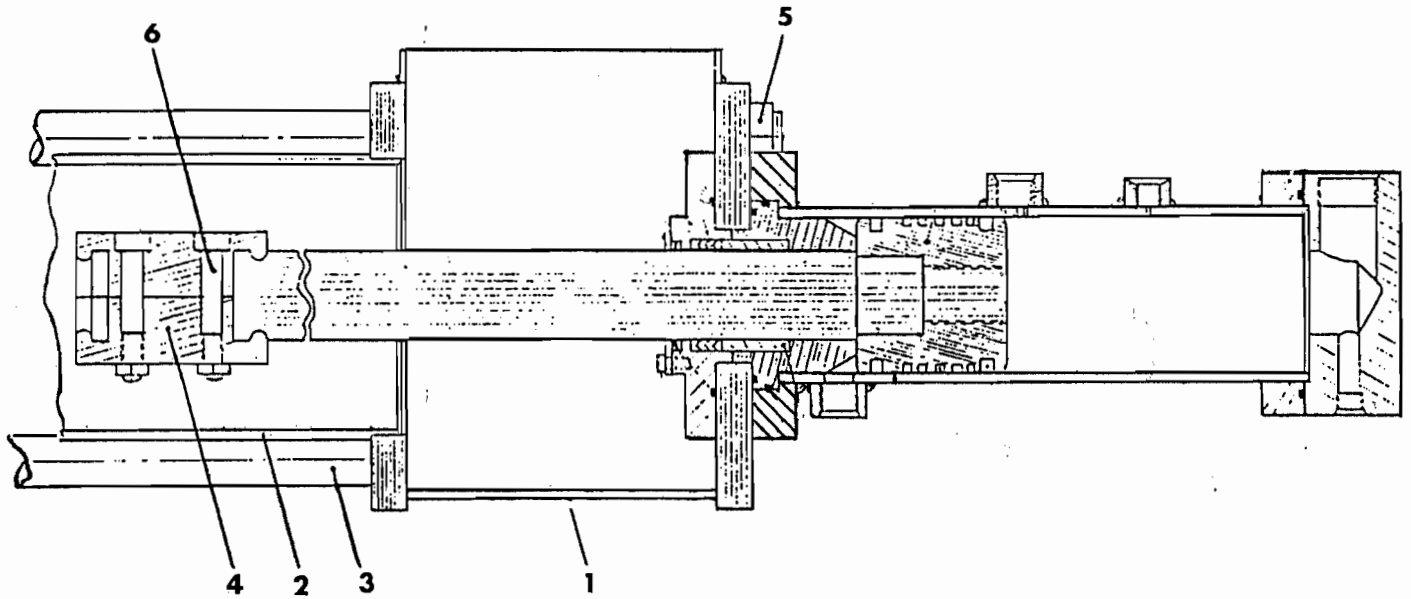
<u>ITEM</u>	<u>DESCRIPTION</u>	<u>PART#</u>	<u>QTY/MCH</u>
1	SWING TUBE HYD CYL	74531	1
2	BELL CRANK	70127	1
3	CLEVIS	70142	1
4	CLEVIS PIN	70143	1
5	CASTLE NUT	70825	1
6	REMIXER MOTOR	74529	1
7	FLOW CONTROL VALVE	74514	1
8	CONTROL VALVE	74584	1

CYLINDER END CAPS / FRONT ENCLOSURE



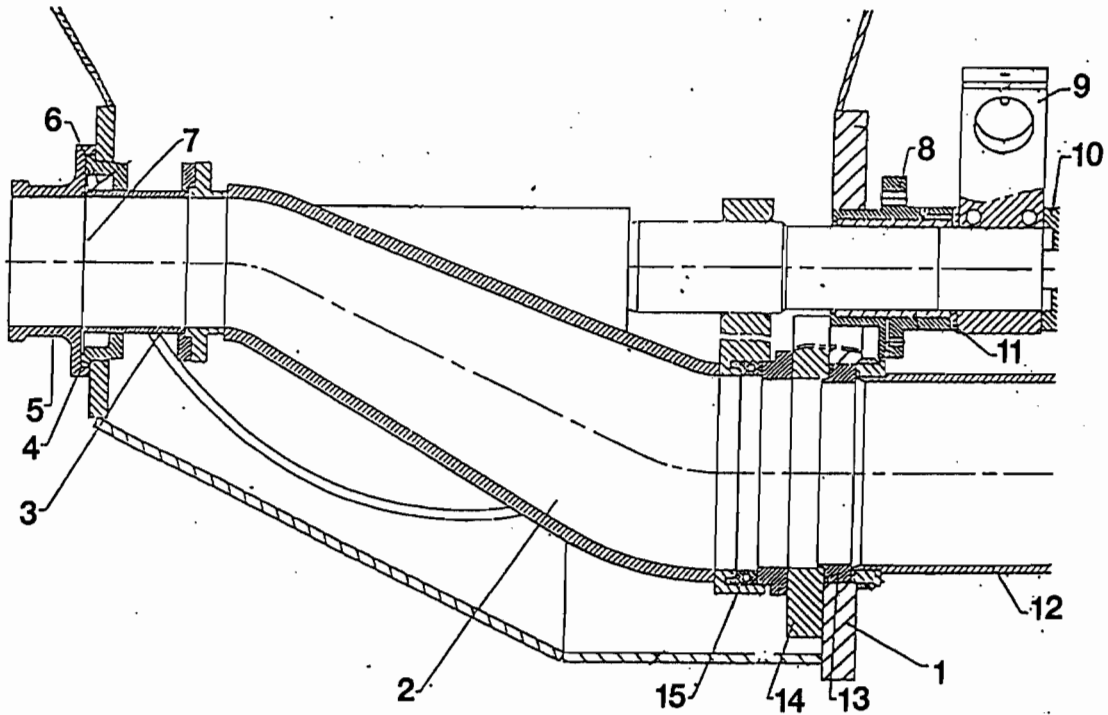
<u>ITEM</u>	<u>DESCRIPTION</u>	<u>PART#</u>	<u>QTY/MCH</u>
1	HYDRAULIC CYLINDER ASSEMBLY	70985	2
2	CHECK VALVE	74580	2
3	OIL COOLER CORE	72942	1

**CONCRETE & HYDRAULIC CYLINDERS**



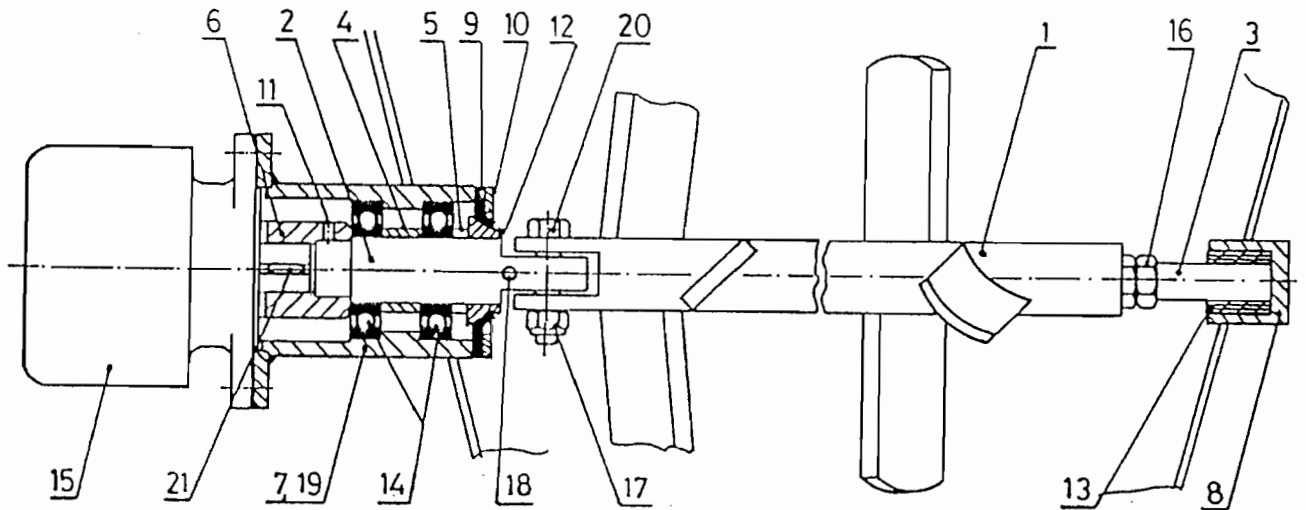
<u>ITEM</u>	<u>DESCRIPTION</u>	<u>PART#</u>	<u>QTY/MCH</u>
1	FLUSHBOX	73498	1
2	CONCRETE CYLINDERS	73497	2
3	TIE ROD CONCRETE CYLINDER	75882	4
4	COUPLING ASSEM MATCHED PAIR	73425	2
5	NUT 1-1/4"-12 (CONC. TIE ROD)		4
6	SOCKET HEAD CAP SCREW (1-1/2"-20 X 3")		
7	HYD CYLINDER ASSEM-COMLETE	70985	2

**SWING TUBE ASSEMBLY OUTLET HOPPER**



<u>ITEM</u>	<u>DESCRIPTION</u>	<u>PART#</u>	<u>QTY/MCH</u>
1	HOPPER	73055	1
2	SWING TUBE ASSEMBLY	73190	1
3	OUTLET CHROMED	70042	1
4	OUTLET SEAL HOUSING	77760	1
5	OUTLET CASTING 5"	73247	1
6	OUTLET SEAL	70049	1
7	O-RING	74013	1
8	FLANGED BEARING	70124	1
9	BELL CRANK	70127	1
10	NUT SPACER	70125	1
11	THRUST WASHER	70141	1
12	CONCRETE CYLINDER	73497	2
13	ANTI-CHIP RING	70047	2
14	WEAR PLATE	77852	1
15	THRUST RING 7"	73406	1

## AGITATOR ASSEMBLY



<u>ITEM</u>	<u>DESCRIPTION</u>	<u>PART#</u>
1	AGITATOR SHAFT WITH PADDLES	72851
2	SHAFT	70224
3	IDLER SHAFT	70214
4	SPACER LONG	70215
5	SPACER SHORT	70216
6	MOTOR COUPLING	70225
7	BEARING HOUSING	70223
8	IDLER BEARING HOUSING	70210
9	SEAL	70212
10	SEAL FLANGE	70211
11	SET SCREW	80374
12	WEAR RING	71018
13	IDLER BEARING	70219
14	BEARING SINGLE ROW BALL	71019
15	HYDRAULIC MOTOR	74529
16	HEX NUT M 20	80030
17	HEX NUT SELF-LOCKING 1/2-13	80019
18	SPRING PIN 3/16 x 1-3/4	80298
19	GREASE FITTING	80516
20	HEX HEAD CAP SCREW 1/2-13 x 2-1/2	80156
21	KEY	30216