

## SOVA *Guncrete* GUNITE MACHINE

### Dry-Mix Shotcrete Machine



#### Applications:

- **Concrete Repair**
- **Refractory Spraying**
- **Rockscaping**
- **Slope Stabilization**
- **Tunnels and Mines**
- **Pools and Spas**
- **GRANCRETE™**
- **Channels**
- **Piers**
- **Sea Walls**
- **Sewers**
- **Retaining & Fire Walls**
- **Dams & Reservoirs**
- **Sand & Gravel Backfill**
- **Concrete Pipe**
- **Ditches**

#### SOVA SERIES 5:

**SOVA** provides a very even flow of material which allows uniform hydration and smooth placement. The adjustable output of material may be increased without sacrificing the quality of the application. The compact **SOVA** is capable of spraying through hoses from  $\frac{3}{4}$ " to  $1\frac{1}{2}$ " (19 to 38 mm) inside diameter.

#### Standard Features:

- Oversized water separator
- Optional dust suppression system
- Continuous feed hopper with bag breaker
- Material Agitator
- Screen and direct drive 5 hp, 8 AM, air motor

# SOVA *Guncrete* GUNITE MACHINE

## Dry-Mix Shotcrete Machine

### SOVA CONFIGURATIONS- Small Open Vertical-Feed Air Powered

#	Feed Bowl Pockets	Hose Size (I.D.)	Maximum Aggregate Size	Air Compressor (Recommended size at 100 psi)	Maximum Output**	Common Applications
1	18	3/4" (1.9cm)	1/8" (3.5mm)	125 cfm (3.5m <sup>3</sup> /min)	2yd <sup>3</sup> /hr (1.5m <sup>3</sup> /hr)	Fine, detailed artistic-type work, rockscaping, patch, repair.
2	18	1" (2.5cm)	1/4" (7mm)	210 cfm (6.0m <sup>3</sup> /min)	2yd <sup>3</sup> /hr (1.5m <sup>3</sup> /hr)	Fine, detailed artistic-type work, rockscaping, patch, repair.
3	18	1 1/4" (3.2cm)	1/4" (7mm)	315-375 cfm (9-11m <sup>3</sup> /min)	4yd <sup>3</sup> /hr (3m <sup>3</sup> /hr)	Refractory spraying, repair work, smooth finish
4	16	1 1/4" (3.2cm)	1/4" (7mm)	315-375 cfm (9-11m <sup>3</sup> /min)	6yd <sup>3</sup> /hr (4.6m <sup>3</sup> /hr)	Refractory spraying, repair work, smooth finish
5	16	1 1/2" (3.8cm)	3/8" (10mm)	315-375 cfm (9-11m <sup>3</sup> /min)	9yd <sup>3</sup> /hr (6.9m <sup>3</sup> /hr)	Refractory spraying, repair work, smooth finish

\* Subtract roughly 90 SCFM (2.5M<sup>3</sup>/MIN) from air requirement if electric model is used. Additional air may be required depending on altitude and atmospheric pressure.

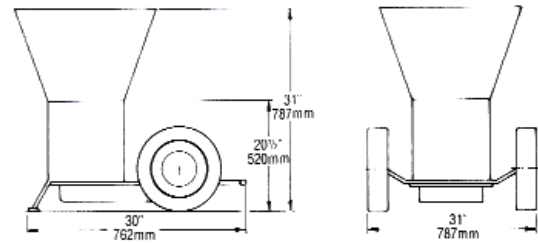
\*\*Feed Bowl, material, air system, nozzleman capability together determine maximum output.

Specifications subject to change without prior notice.

MODEL	SOVA	
Maximum Horizontal Conveying Distance	ft	1000+
	m	305+
Maximum Vertical Conveying Distance	ft	300+
	m	91+
Drive System	5 hp, 8 AM Rotary Vane Motor, Sealed Spur Gear	
Hopper	Continuous Feed	
Gross Weight (Approx.)	lbs	425
	kg	193

Maximum theoretical performance shown above. Performance will vary depending on slump, mix design and delivery line diameter.

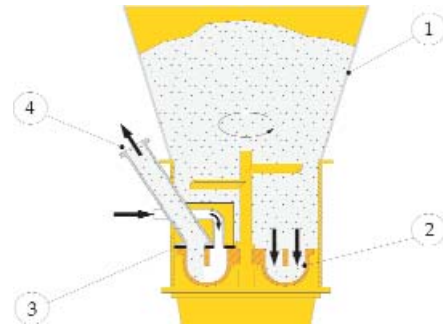
Specifications subject to change without prior notice.



### Operating Principle:

**REED's SOVA** dry mix gun has the same basic operating principle that has made its LOVA-style gun so successful throughout the world.

1. The dry mix is fed through a hopper into the pockets of the rotary feed wheel.
2. The rotary feed wheel, driven by a heavy-duty oil bath gear drive, rotates the mix under the conveying air inlet and material outlet.
3. With the introduction of single source compressed air, the mix is evacuated from the feed wheel pockets and then travels through the outlet.
4. The dry mix is then conveyed in suspension through the dry mix hose to the shotcrete nozzle where water is introduced.



Distributed By:

**REED**

**REED** • An Independent Member of the Shea Family of Companies  
 13822 Oaks Avenue • Chino, California 91710-7008 USA • 909-287-2100  
 Fax: 909-287-2140 • Toll-free: 888-779-7333 • www.reedpumps.com