

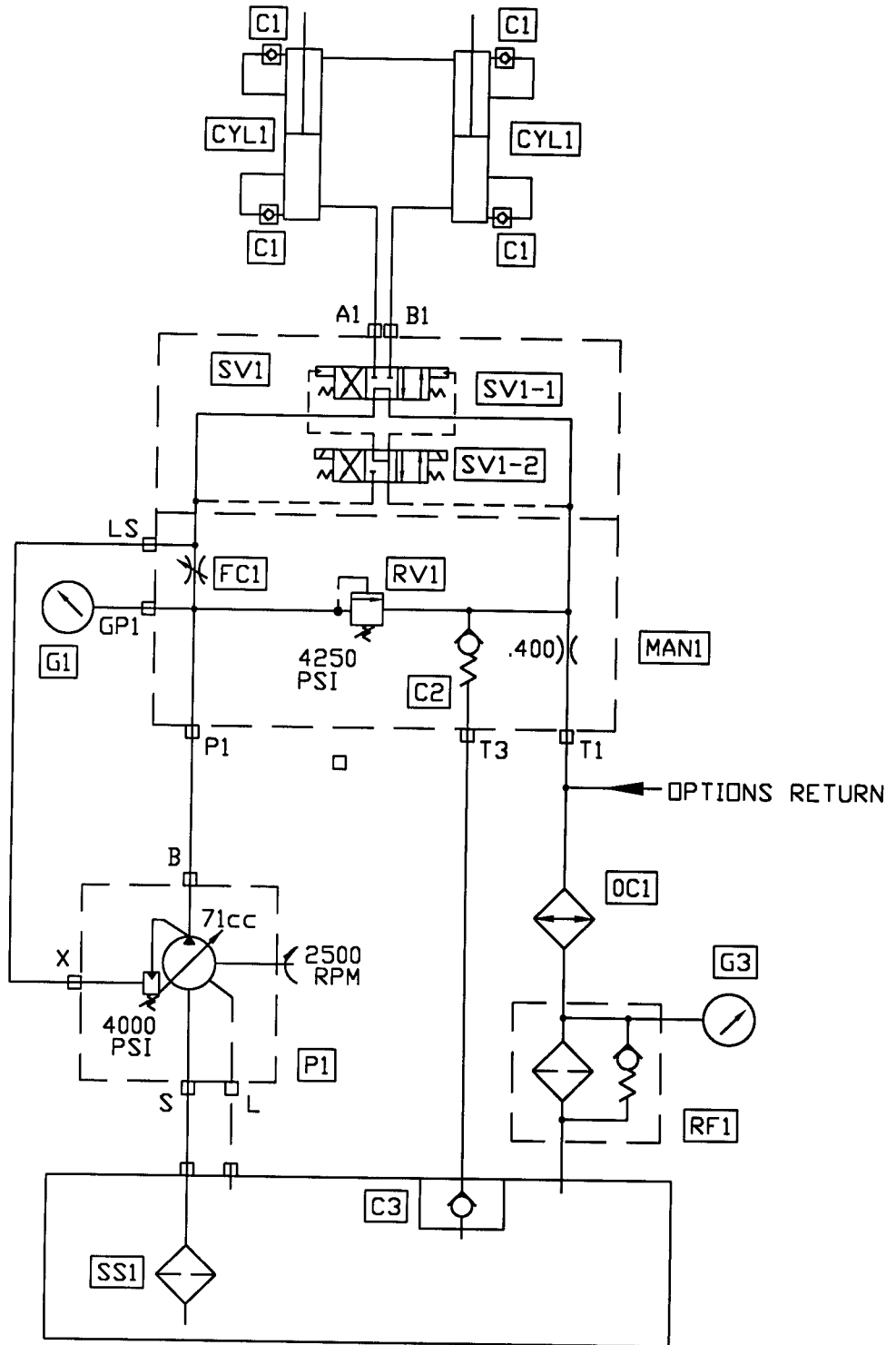
DO NOT SCALE DRAWING UNLESS OTHERWISE SPECIFIED, DIMENSIONS ARE IN INCHES.		REED CONCRETE PLACING EQUIPMENT CHIND, CA 91710	
TOLERANCES: XX XXX FRACTION ANGLE		TITLE B_SERIES_ELETRICAL_W-HOPPER_SAFTE_SWITCH	
DRAWN D.R. 6/21/06		MATERIAL	
APPVD		THIS DRAWING IS THE PROPERTY OF REED MANUFACTURING AND IS LOANED WITHOUT CONSIDERATION OTHER THAN THE BORROWER'S AGREEMENT THAT IT SHALL NOT BE REPRODUCED, COPIED, LOANED, OR DISPOSED OF, DIRECTLY OR INDIRECTLY, FOR ANY PURPOSE, OTHER THAN THAT FOR WHICH IT IS SPECIFICALLY FURNISHED.	
REVISIONS		PART NUMBER 86625-SAFESWITCH	
		SHEET-1	

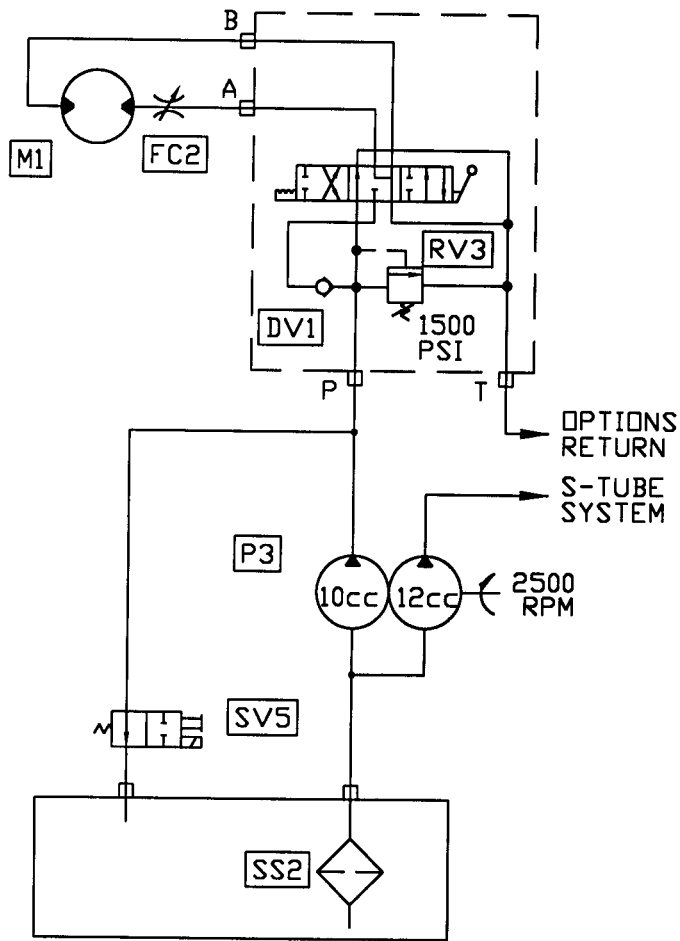
REED

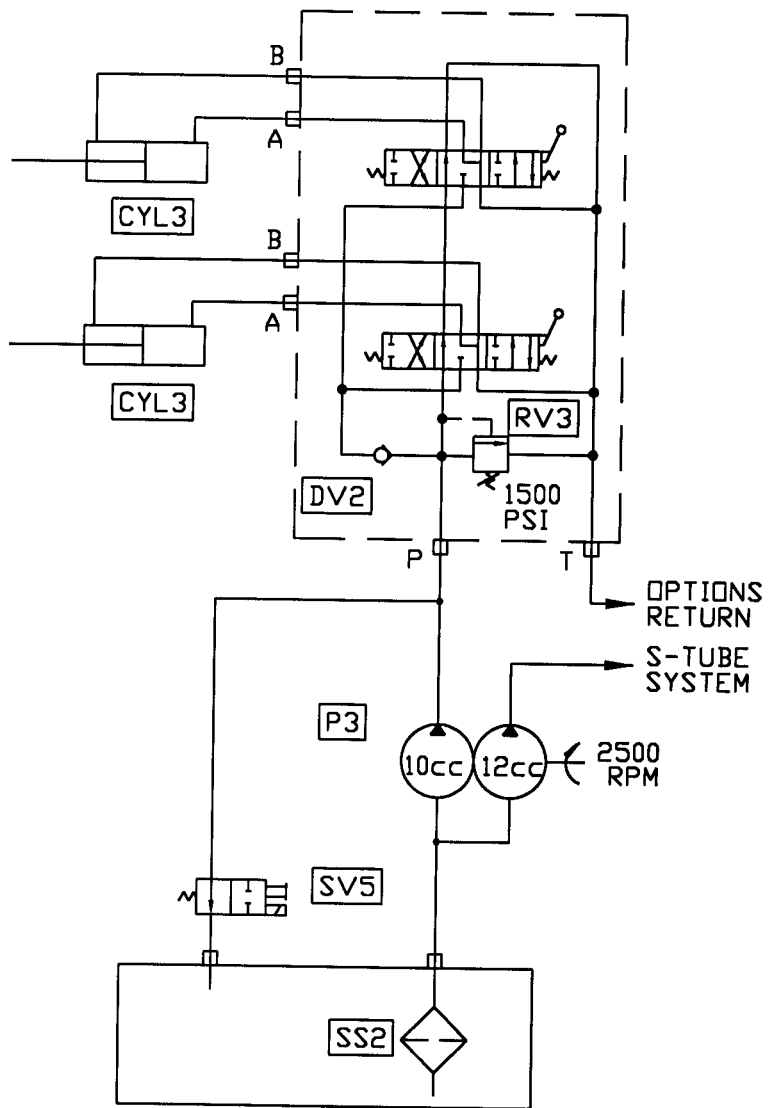
**Model B45
HYDRAULIC COMPONENTS**

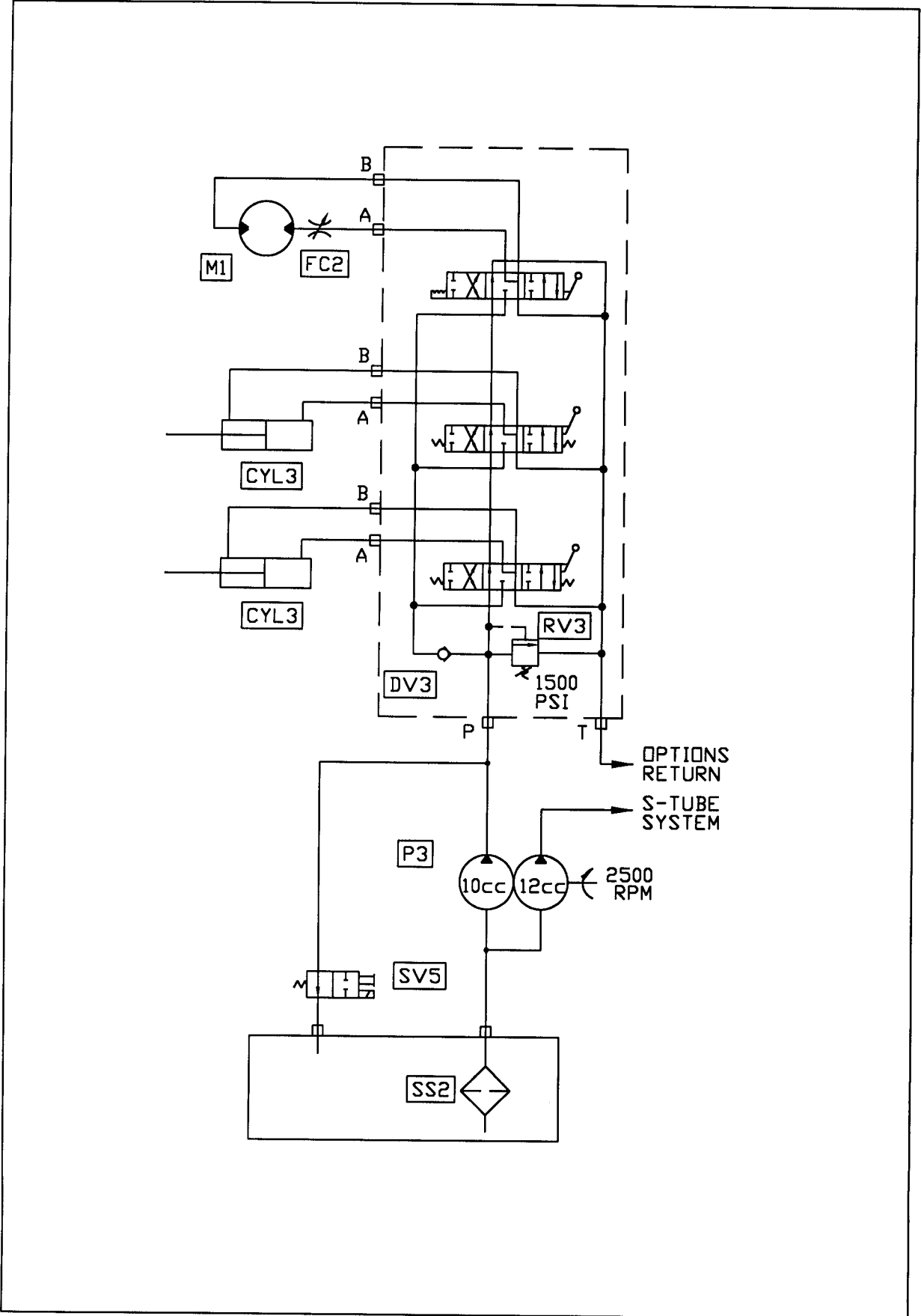
**SCMTC
PAGE 01**

Code	Description	Part No.	Qty
DRIVE CYLINDER CIRCUIT			
P1	Main Pump - 71 cc	79560	1
CYL1	Hydraulic Drive Cylinder	79510	2
MAN1	Manifold - Drive Cylinder Circuit	85248	1
SV1	Solenoid Valve - Drive Cylinder Circuit	85689	1
SV1-1	Solenoid Valve - Main	85690	1
SV1-2	Solenoid Valve - Pilot	85691	1
	Coil for SV1-2	85692	2
RV1	Relief Valve Cartridge	85696	1
FC1	Flow Control Valve Cartridge	85697	1
C2	Check Valve Cartridge	85698	1
C1	Check Valve	78961	4
C3	Check Valve	85574	1
G1	Pressure Gauge - 6000 psi	74562	1
OC1	Oil Cooler	85713	1
RF1	Return Filter	85282	1
	Return Filter Element	85283	1
G3	Pressure Gauge - Return	85575	1
SS1	Magnetic Suction Strainer - 2"	801024	1
S-TUBE CIRCUIT			
P2	Gear Pump - 17 cc	72978	1
CYL2	S-Tube Shift Cylinder	75087	1
MAN2	Manifold - S-Tube Circuit	85249	1
SV2	Solenoid Valve - S-Tube Circuit	85693	1
SV2-1	Solenoid Valve - Main	85694	1
SV2-2	Solenoid Valve - Pilot	85695	1
	Coil for SV2-2	85692	2
SV3	Solenoid Valve Cartridge	85699	1
	Coil for SV3	85700	1
SV4	Solenoid Valve Cartridge	85701	1
	Coil for SV4	85702	1
RV2	Relief Valve Cartridge	85703	1
UV1	Unloading Valve Cartridge	85704	1
BV1	Ball Valve	85705	1
ACC1	Accumulator	74515	1
G2	Pressure Gauge - 3000 psi	70366	1
SS2	Magnetic Suction Strainer - 1 1/4"	79247	1

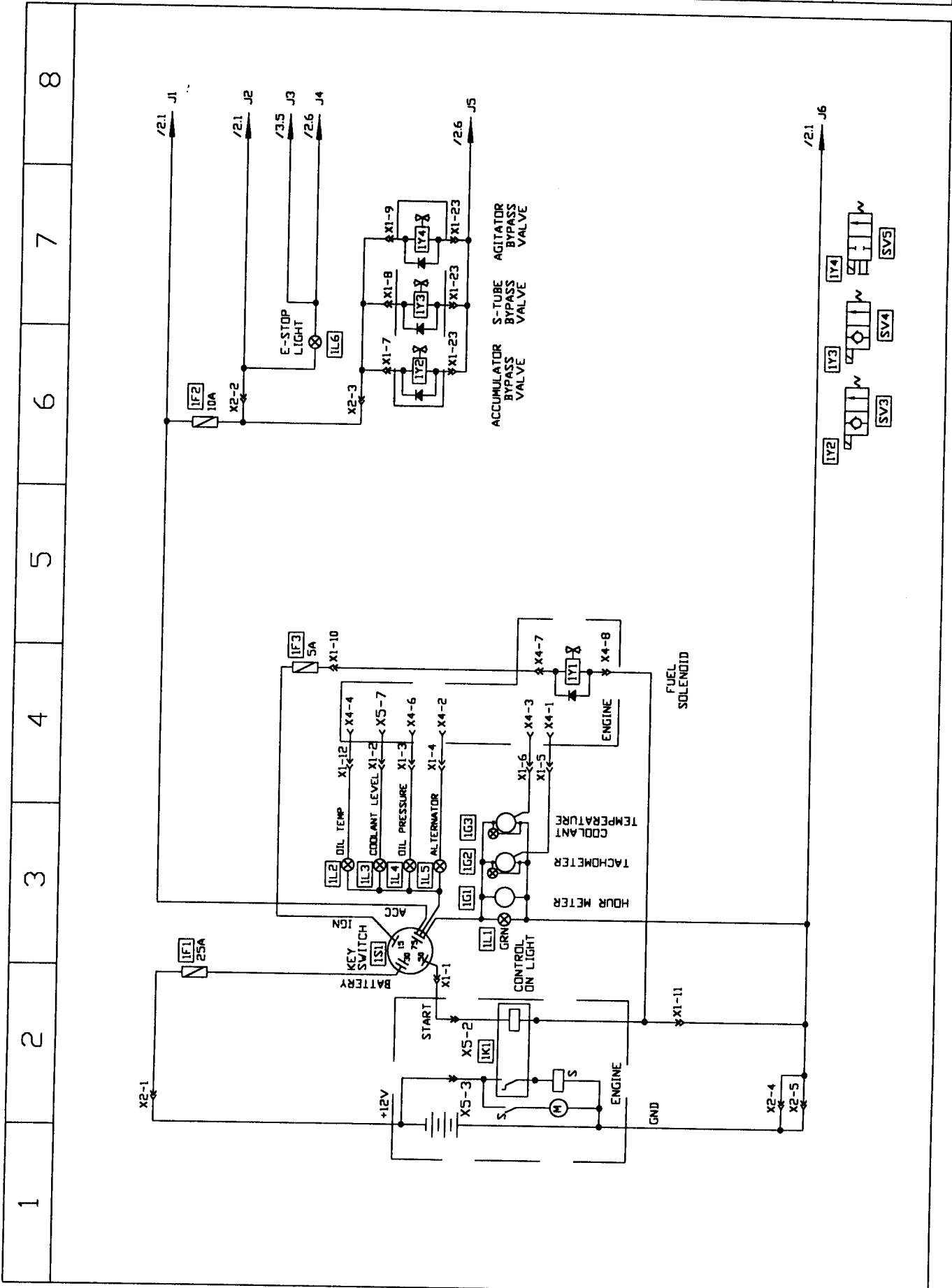




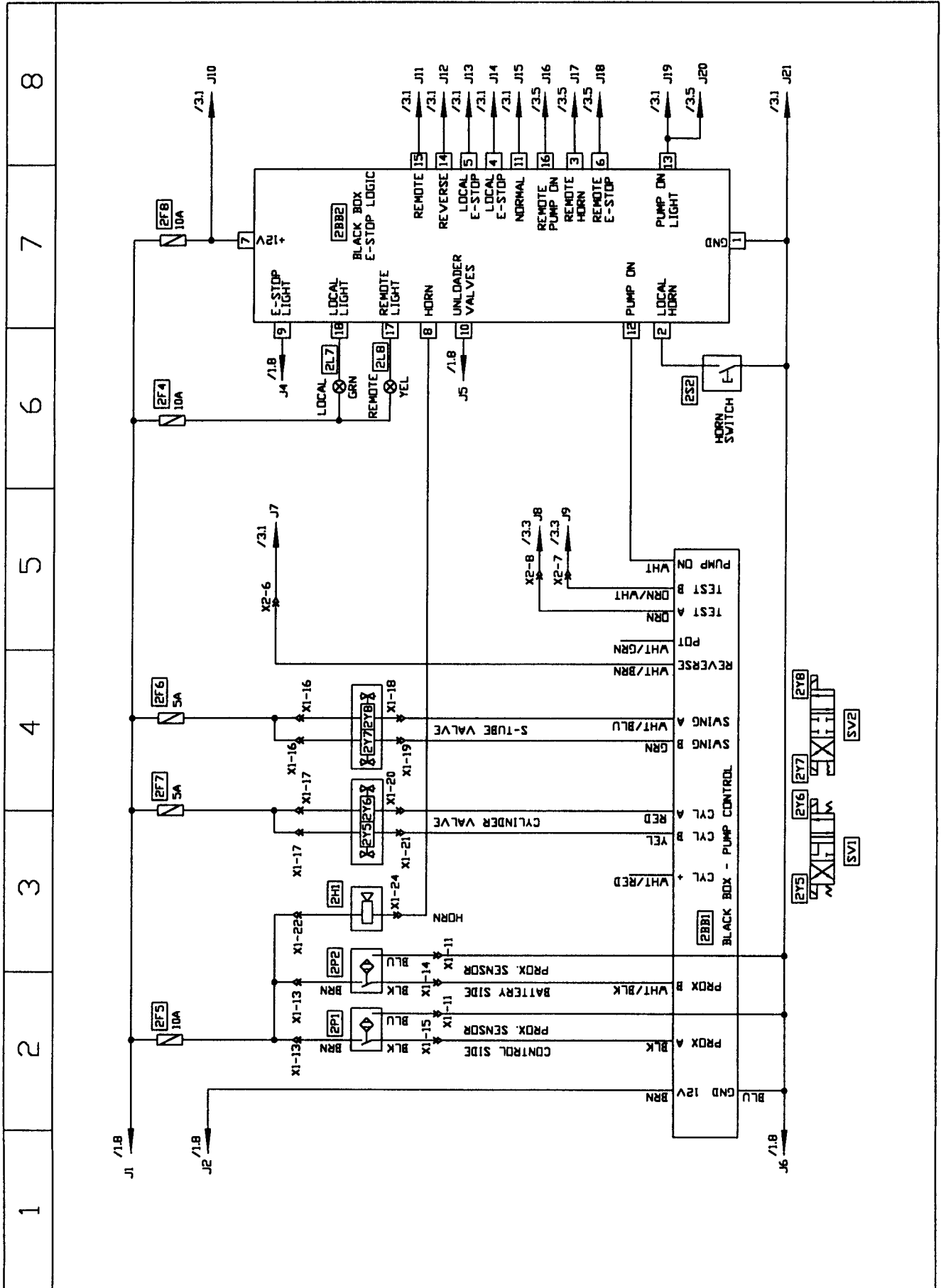


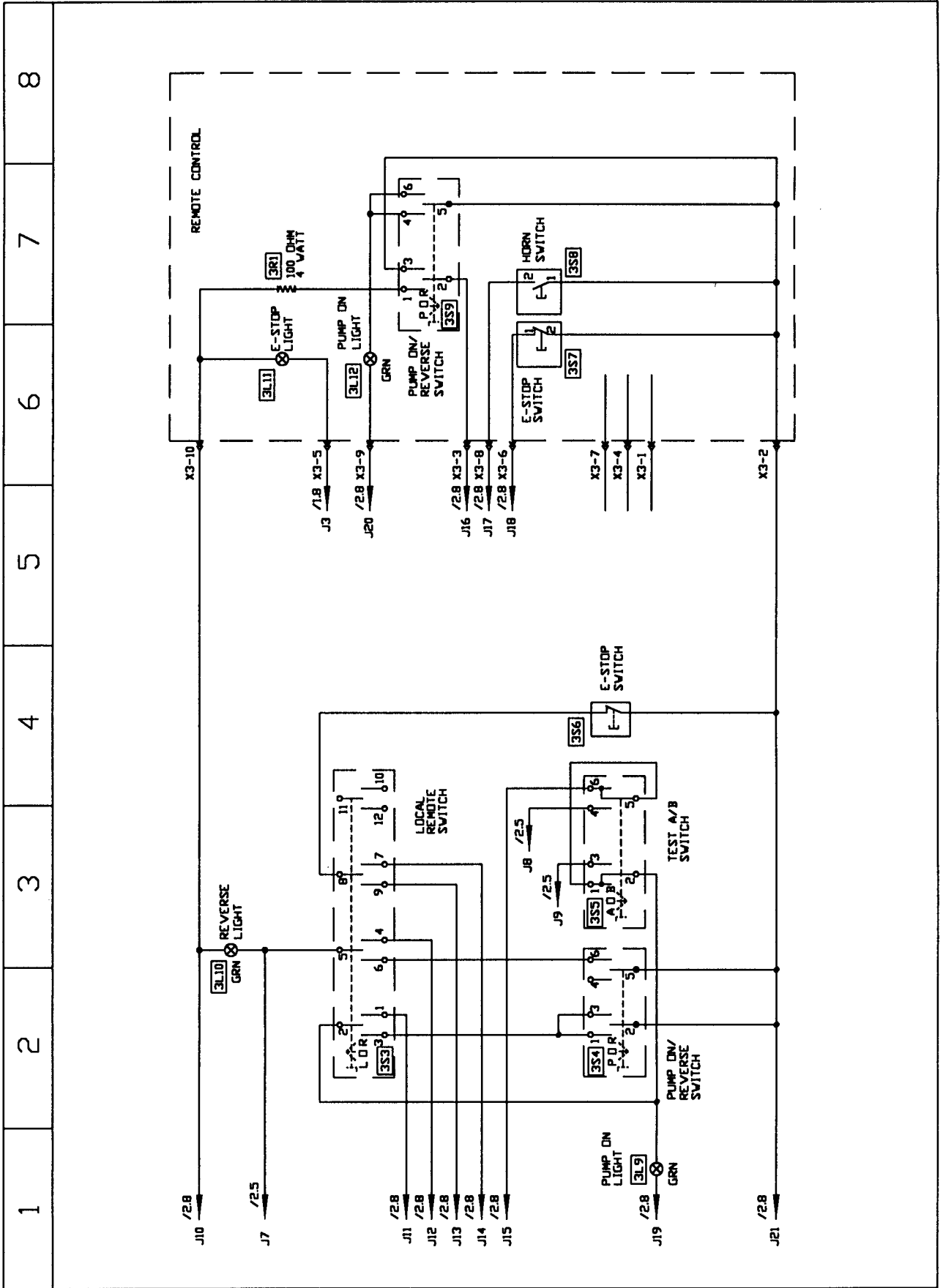


REED		B-Series ELECTRICAL COMPONENTS			SCMTC PAGE 09
Code	Description	Part No.	Qty	Location	
FUSES					
1F1	Fuse, 25A	800447	1	Control Panel	
1F2	Fuse, 10A	800449	1	Control Panel	
1F3	Fuse, 5A	90392	1	Control Panel	
2F4	Fuse, 10A	800449	1	Control Panel	
2F5	Fuse, 10A	800449	1	Control Panel	
2F6	Fuse, 10A	800449	1	Control Panel	
2F7	Fuse, 5A	90392	1	Control Panel	
2F8	Fuse, 5A	90392	1	Control Panel	
	Fuse Block, 8 Way	85354	1	Control Panel	
SOLENOID VALVE COILS					
1Y1	Coil, Fuel Solenoid	Deutz	1	Engine	
1Y2	Coil, Accumulator Bypass	85700	1	S-Tube Manifold	
1Y3	Coil, S-Tube Bypass	85702	1	S-Tube Manifold	
1Y4	Coil, Agitator Bypass	73184	1	Hyd. Tank	
2Y5	Coil, Cylinder "B"	85692	1	S-Tube Manifold	
2Y6	Coil, Cylinder "A"	85692	1	S-Tube Manifold	
2Y7	Coil, S-Tube Shift "A"	85692	1	Pump Manifold	
2Y8	Coil, S-Tube Shift "B"	85692	1	Pump Manifold	
	Plugs for 1Y2 thru 2Y8	74597	7	Manifolds	
MISCELLANEOUS					
2BB1	Black Box, Pump Control	85334	1	Control Box	
2BB2	Black Box, E-Stop Logic	85596	1	Control Box	
2P1	Proximity Switch, Cyl "B"	77998	1	Water Box	
2P2	Proximity Switch, Cyl "A"	77998	1	Water Box	
2H1	Horn	800347	1	Control Box	
3R1	Resistor, 100 Ohm	72777	1	Remote Control	
CONNECTORS					
X1	Connector Insert, 24 Pin, Female	78696	1	Control Box	
X1	Connector Base	78697	1	Control Box	
X1	Connector Insert, 24 Pin, Male	78695	1	Harness	
X1	Connector Hood	800424	1	Harness	
X2	Terminal Block	72820	8	Control Box	
X3	Connector Insert, 10 Pin, Female	79963	1	Control Box	
X3	Connector Base	79965	1	Control Box	
X3	Connector Insert, 10 Pin, Male	79964	1	Remote Control	
X3	Connector Hood	79966	1	Remote Control	
X4	Connector, Engine, White	72926	1	Harness	
X5	Connector, Engine, Yellow	76902	1	Harness	

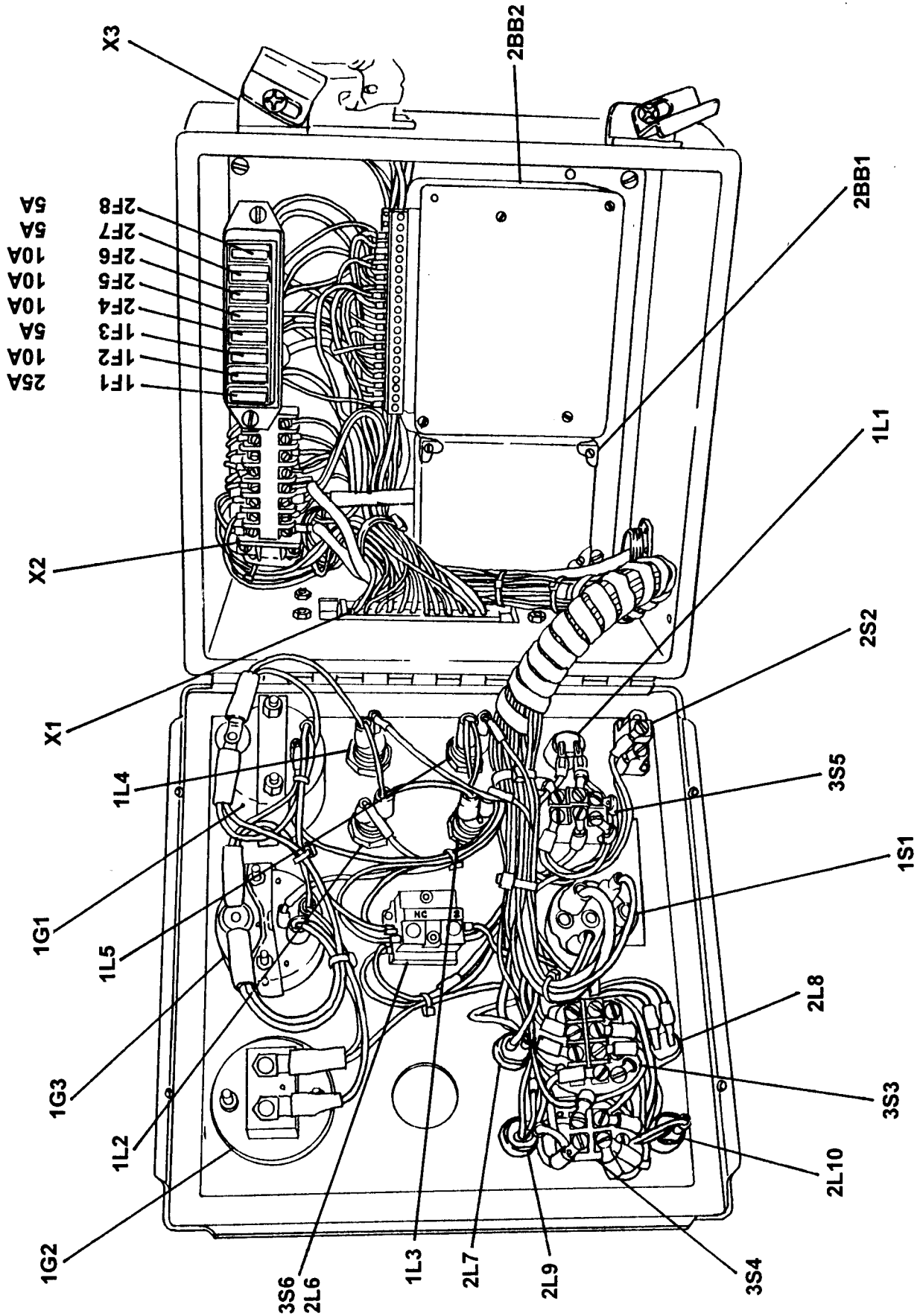


1 2 3 4 5 6 7 8





1 2 3 4 5 6 7 8

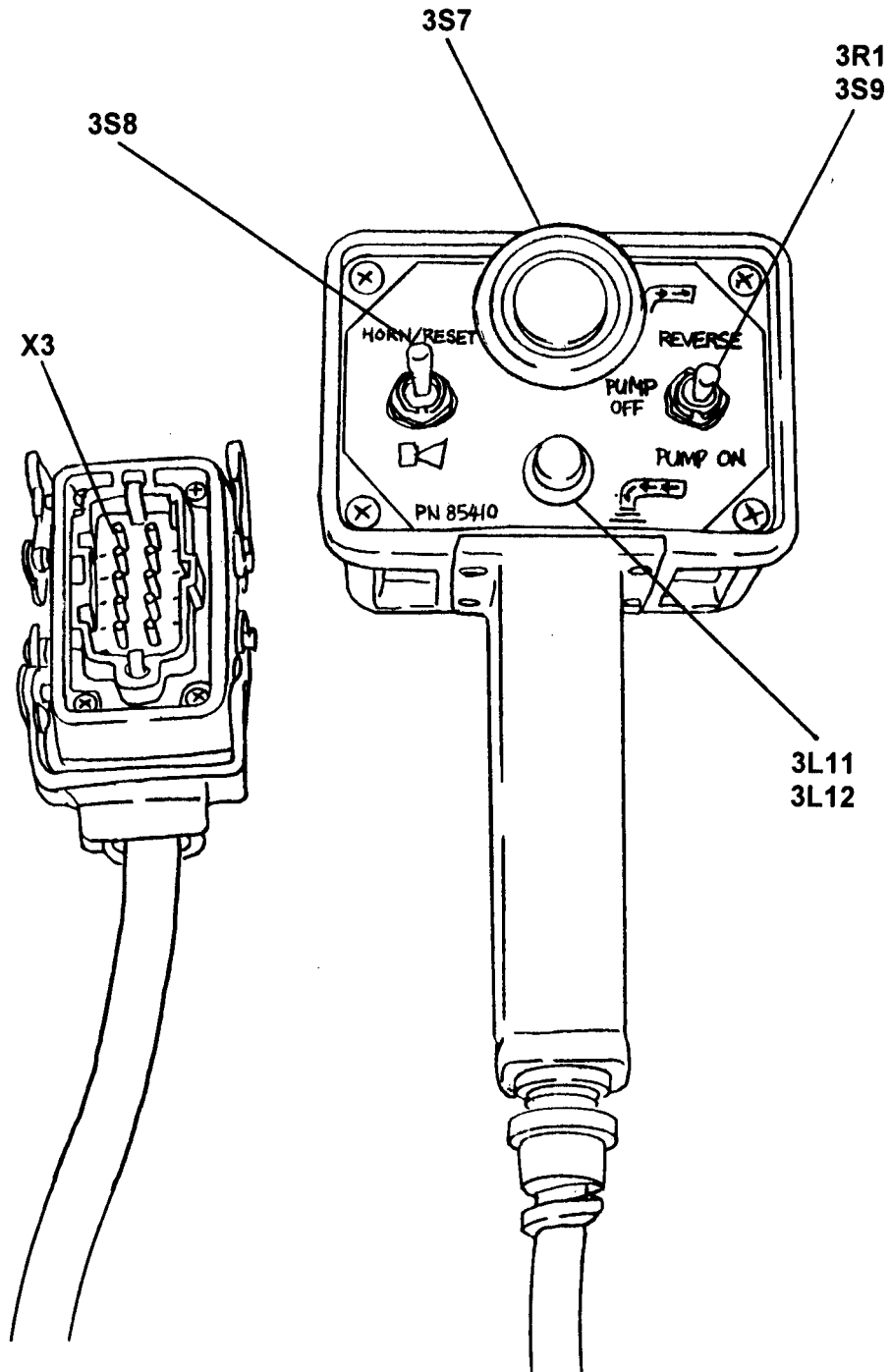


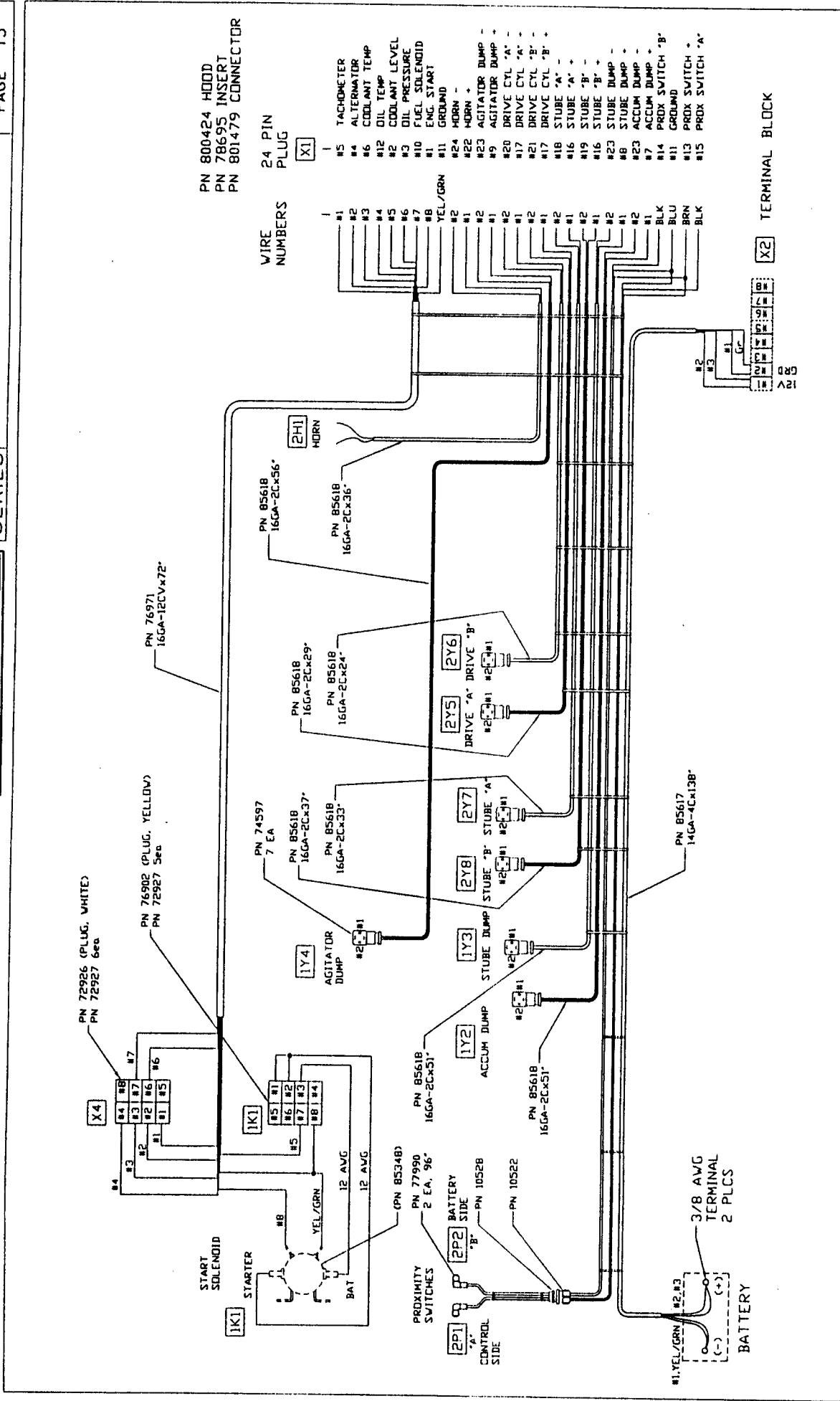


TRAILER MOUNTED PUMP MODEL B45
REMOTE CONTROL
ELECTRICAL COMPONENTS

SCMTC

PAGE 14





PN 800424 HOOD
 PN 78695 INSERT
 PN 801479 CONNECTOR

24 PIN
 PLUG

X1

WIRE
 NUMBERS

- 1
- #1 TACHMETER
- #2 ALTERNATOR
- #3 COOLANT TEMP
- #4 OIL TEMP
- #5 COOLANT LEVEL
- #6 OIL PRESSURE
- #7 FUEL SOLENOID
- #8 ENG. START
- #9 GROUND
- #10 HORN
- #11 HORN
- #12 HORN
- #13 AGITATOR DUMP
- #14 AGITATOR DUMP
- #15 DRIVE CYL 'A'
- #16 DRIVE CYL 'B'
- #17 DRIVE CYL 'B'
- #18 DRIVE CYL 'B'
- #19 STUBE 'A'
- #20 STUBE 'A'
- #21 STUBE 'B'
- #22 STUBE 'B'
- #23 STUBE DUMP
- #24 STUBE DUMP
- #25 ACCUM DUMP
- #26 ACCUM DUMP
- #27 PROX SWITCH 'B'
- #28 GROUND
- #29 PROX SWITCH 'A'
- #30 PROX SWITCH 'A'

X2 TERMINAL BLOCK





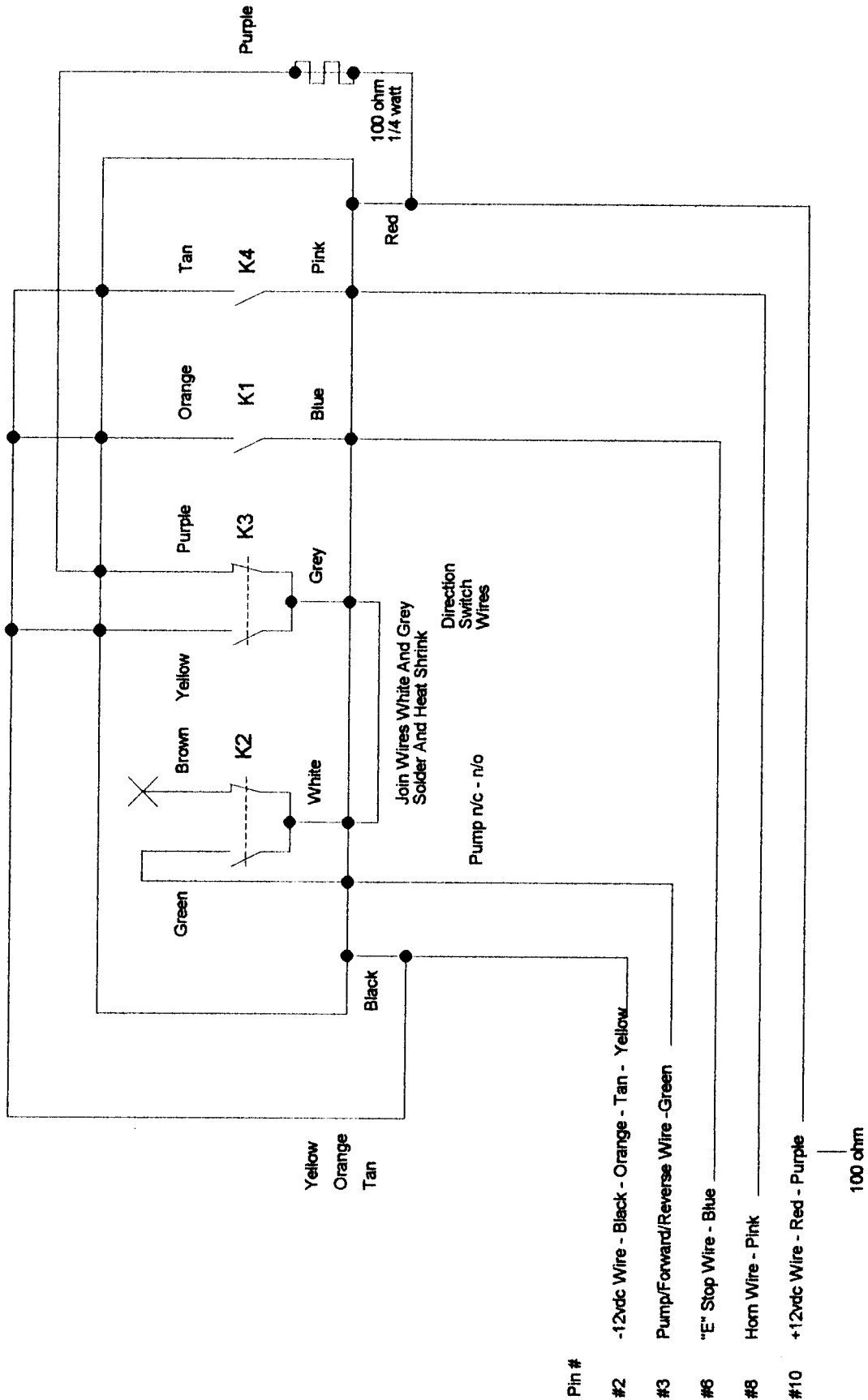
**TRAILER MOUNTED PUMP MODEL B45
HYDRAULIC HOSE KIT**

No.	Part No.	End #1	End #2
H01	85666-001	Main Pump "P"	Cylinder Manifold "P1"
H02	85666-001	Cylinder Bulkhead "A"	Cylinder "A"
H03	85666-001	Cylinder Bulkhead "B"	Cylinder "B"
H04	85659-001	Main pump load sense	Cylinder Manifold "LS"
H05	85657-001	Main pump case drain	Tank return
H06	85654-001	Cylinder Manifold "T1"	Oil Cooler "IN"
H07	85654-001	Oil Cooler "OUT"	Return Filter Bulkhead
H08	85659-002	Check Loop	
H09	85659-002	Check Loop	
H10	85659-002	Check Loop	
H10	85659-002	Check Loop	
H11	85659-002	Check Loop	
H12	85664-001	Tank suction	Gear Pump "S"
H13	85657-002	Gear Pump "P"	S-Tube Manifold "P2"
H14	85667-001	S-Tube Manifold "ACC"	Accumulator
H15	85657-002	Bulkhead "A"	Shift cylinder bore side
H16	85657-002	Bulkhead "B"	Shift cylinder rod side
H17	85669-001	Fuel Tank Suction	Fuel Filter "IN"
H18	85669-002	Fuel Filter "OUT"	Engine
SUCTION HOSES			
B50	85660-001	Tank suction	Main Pump "S"
TANDEM PUMP			
H01	85663-001	Tank Suction	Tandem Pump "S"
H02	85657-003	Tandem Pump "P"	Bulkhead Tee "P"
H03	85657-002	Bulkhead Tee "P"	Bypass Valve "1"
H04	85657-005	Bulkhead "T"	Cylinder Manifold "T1"
AGITATOR VALVE			
H01	85657-002	Bulkhead "P"	Manual Valve "P"
H02	85657-002	Manual Valve "T"	Bulkhead "T"
AGITATOR / OUTRIGGER VALVE			
H01	85657-001	Bulkhead "P"	Manual Valve "P"
H02	85657-002	Manual Valve "T"	Bulkhead "T"
AGITATOR			
H01	85658-001	Agitator Valve "A"	Agitator Motor "A" Flow Control
H02	85658-002	Agitator Valve "B"	Agitator Motor "B"
OUTRIGGERS			
H01	85659-003	O/R Valve "A"	RH Outrigger Bore
H02	85659-003	O/R Valve "B"	RH Outrigger Rod
H03	85659-003	O/R Valve Tube "A"	LH Outrigger Bore
H04	85659-003	O/R Valve Tube "B"	LH Outrigger Rod
FUEL RETURN			
	74716	Engine	Fuel Tank Return



TRAILER MOUNTED PUMP B - SERIES OPTIONAL RADIO REMOTE CONTROL ELECTRICAL SCHEMATICS

SCMTC
OPTION

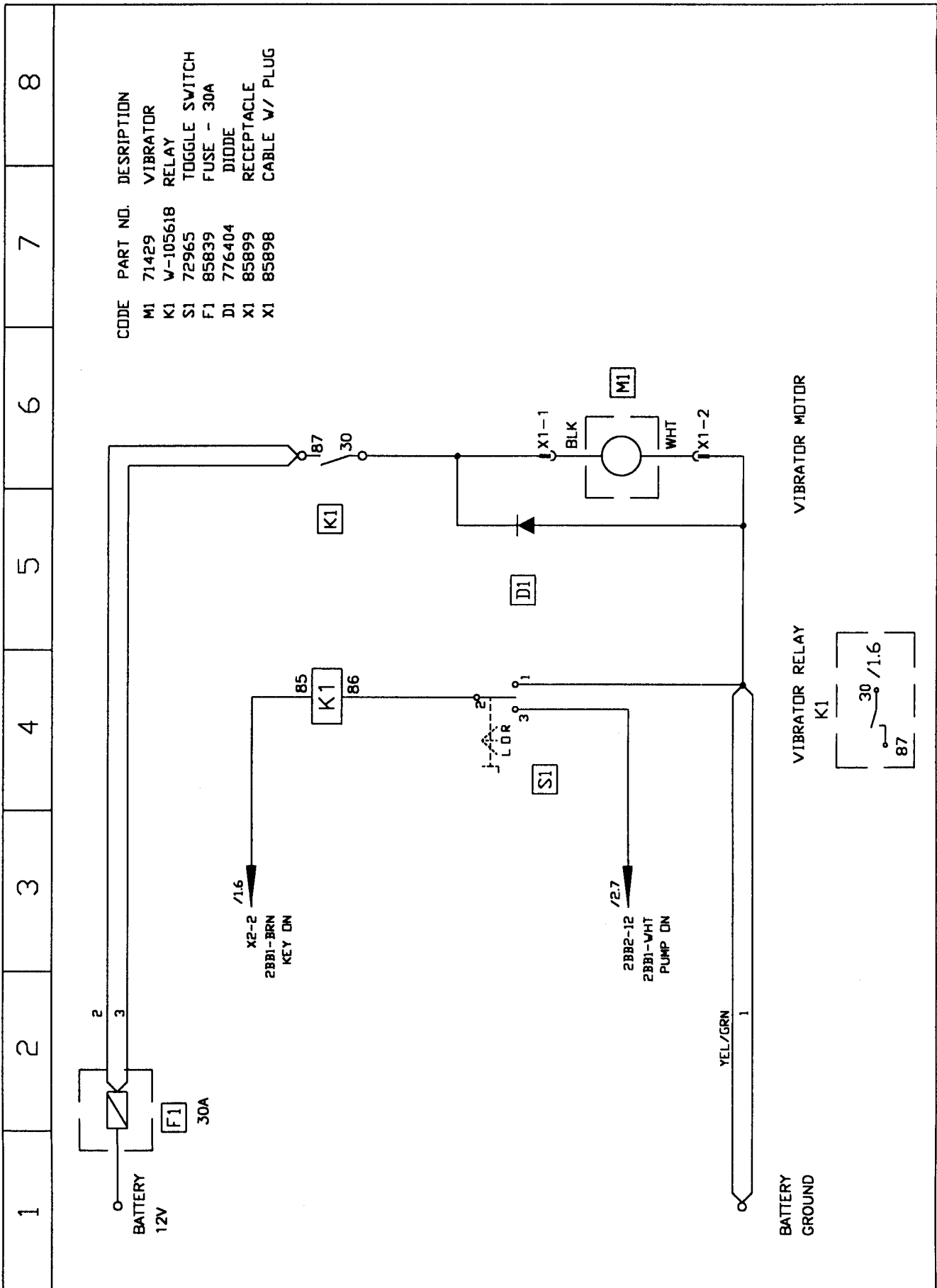




B
SERIES

VIBRATOR SCHEMATIC
PN 86132 / 85902

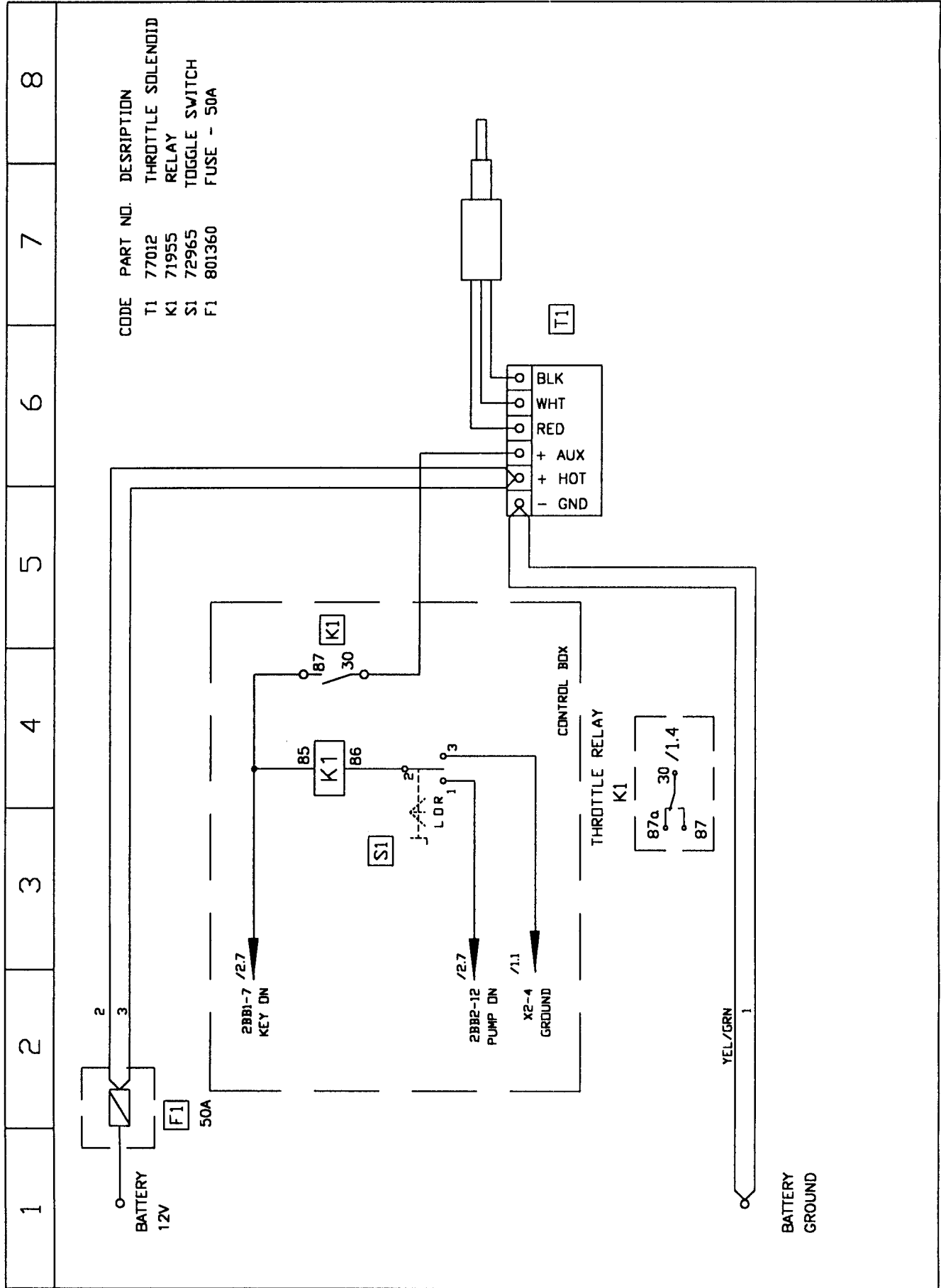
OPTION



CODE	PART NO.	DESCRIPTION
M1	71429	VIBRATOR
K1	W-105618	RELAY
S1	72965	TOGGLE SWITCH
F1	85839	FUSE - 30A
D1	776404	DIODE
X1	85899	RECEPTACLE
X1	85898	CABLE W/ PLUG

1 2 3 4 5 6 7 8

REVISION





B
SERIES

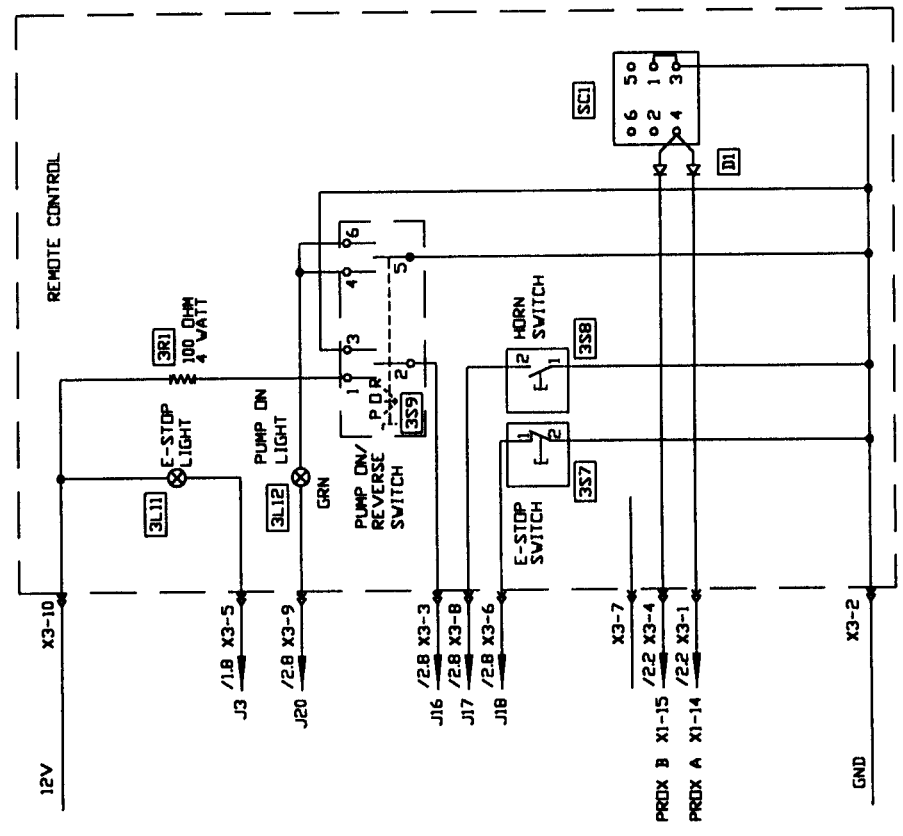
STROKE COUNTER SCHEMATIC
COUNTER IN REMOTE

OPTION

1 2 3 4 5 6 7 8

PN 85960 - REMOTE ASSY, STROKE COUNTER, 50 FT
PN 86244 - REMOTE ASSY, STROKE COUNTER, 100 FT

CODE	PART NO.	DESCRIPTION
SCI	72330	STROKE COUNTER
DI	74388	DIODE





B - SERIES OPTIONAL RADIO REMOTE CONTROL WIRING DIAGRAM

SCMTC

OPTION

