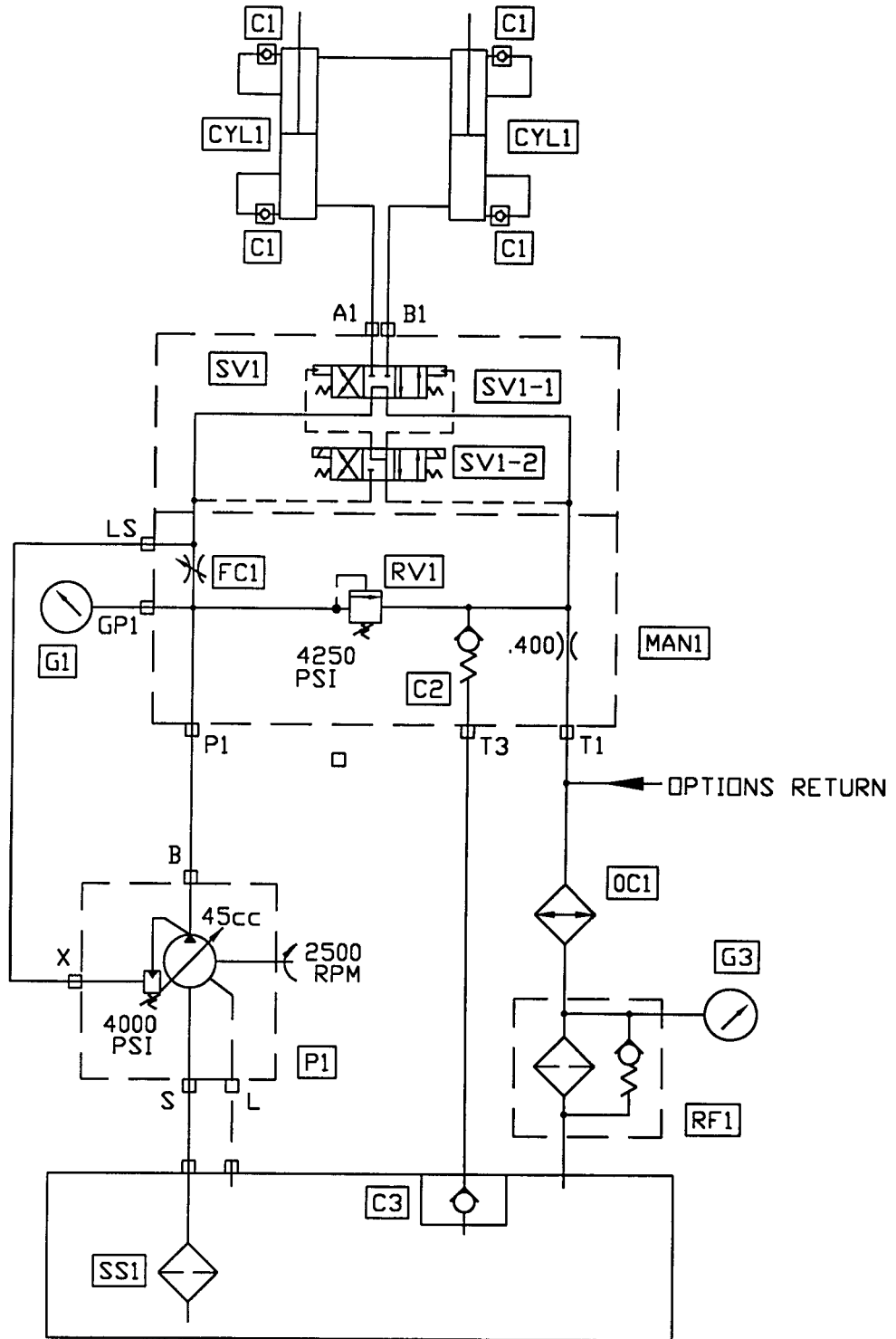


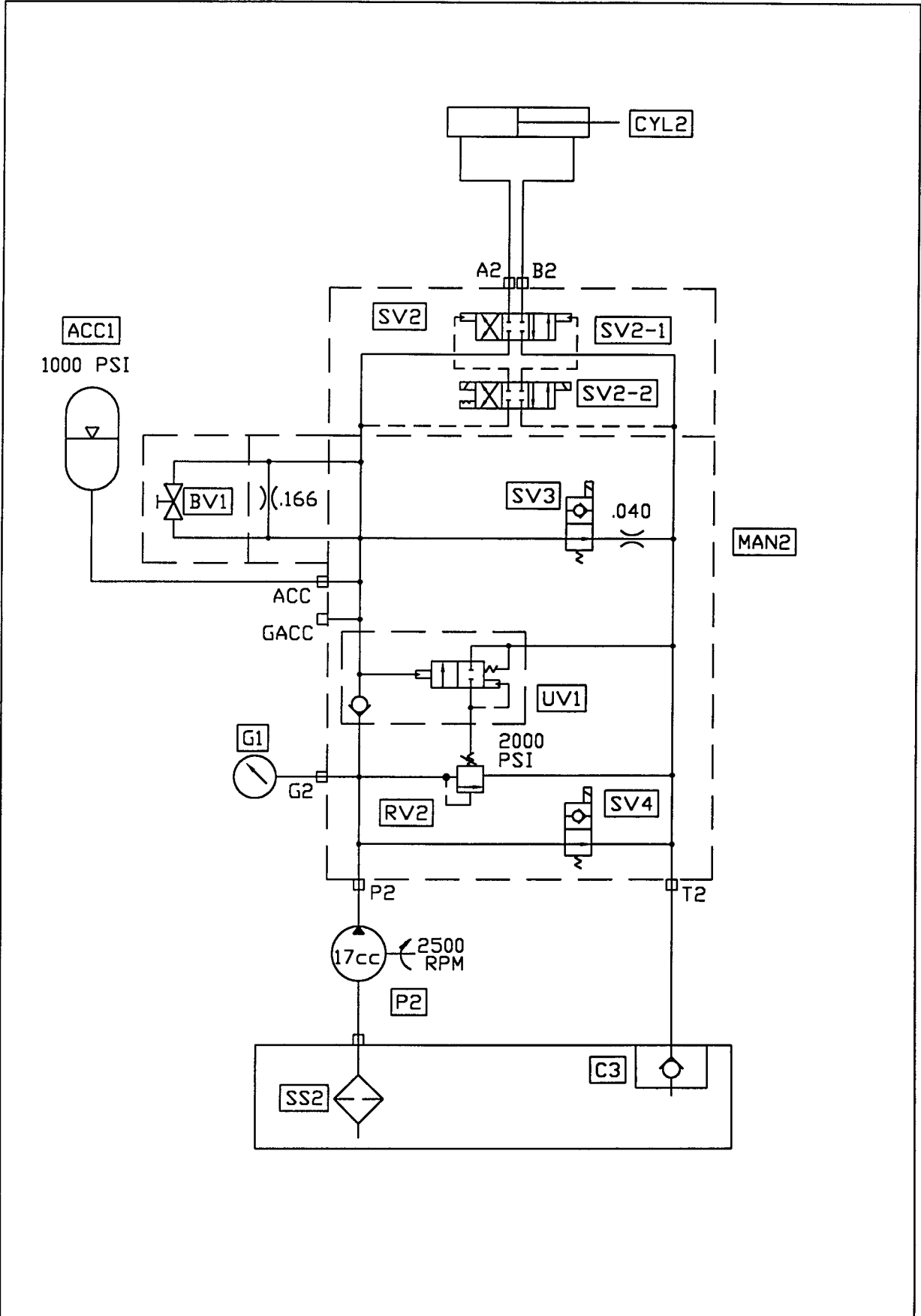
REED

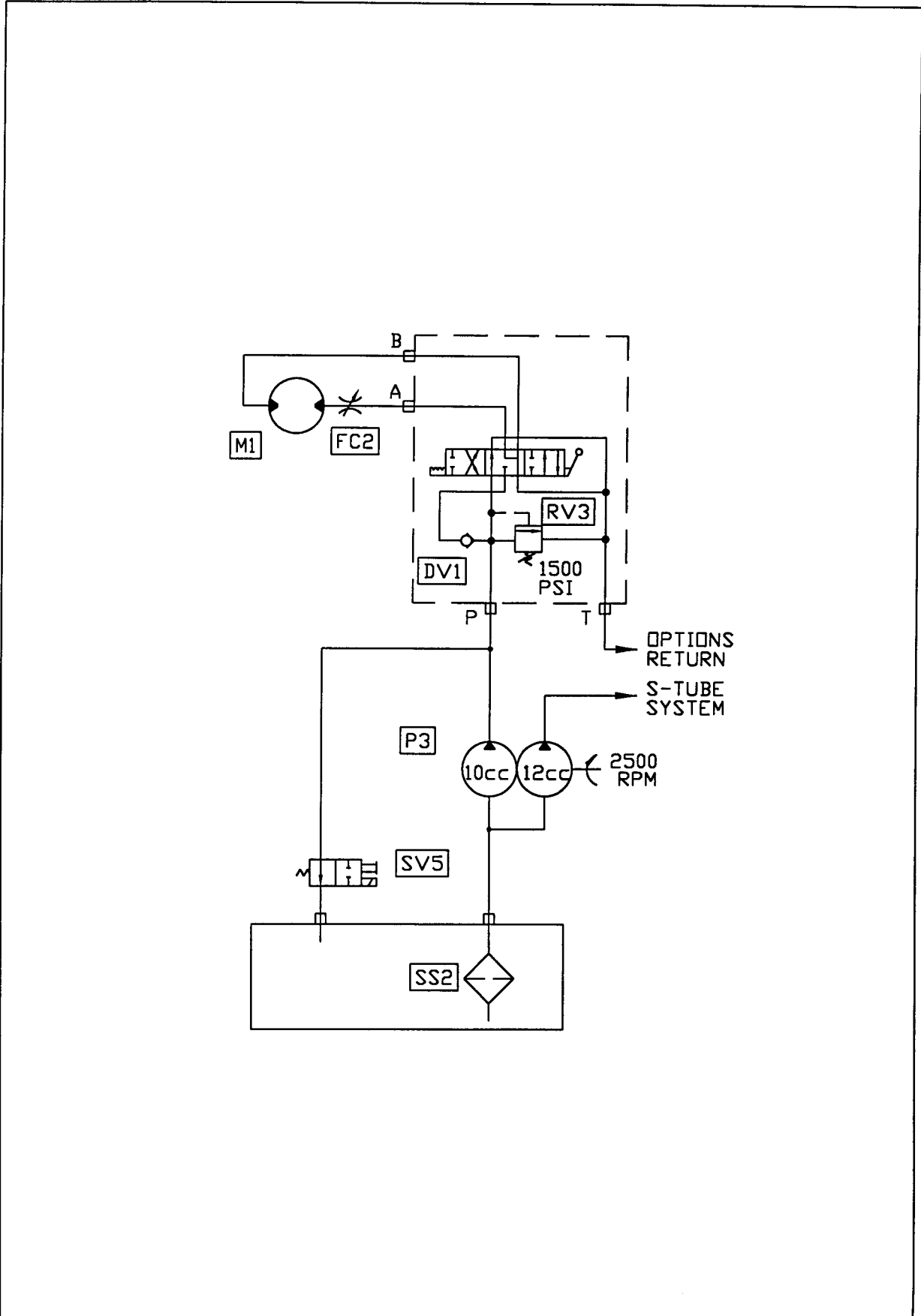
**Model B30
HYDRAULIC COMPONENTS**

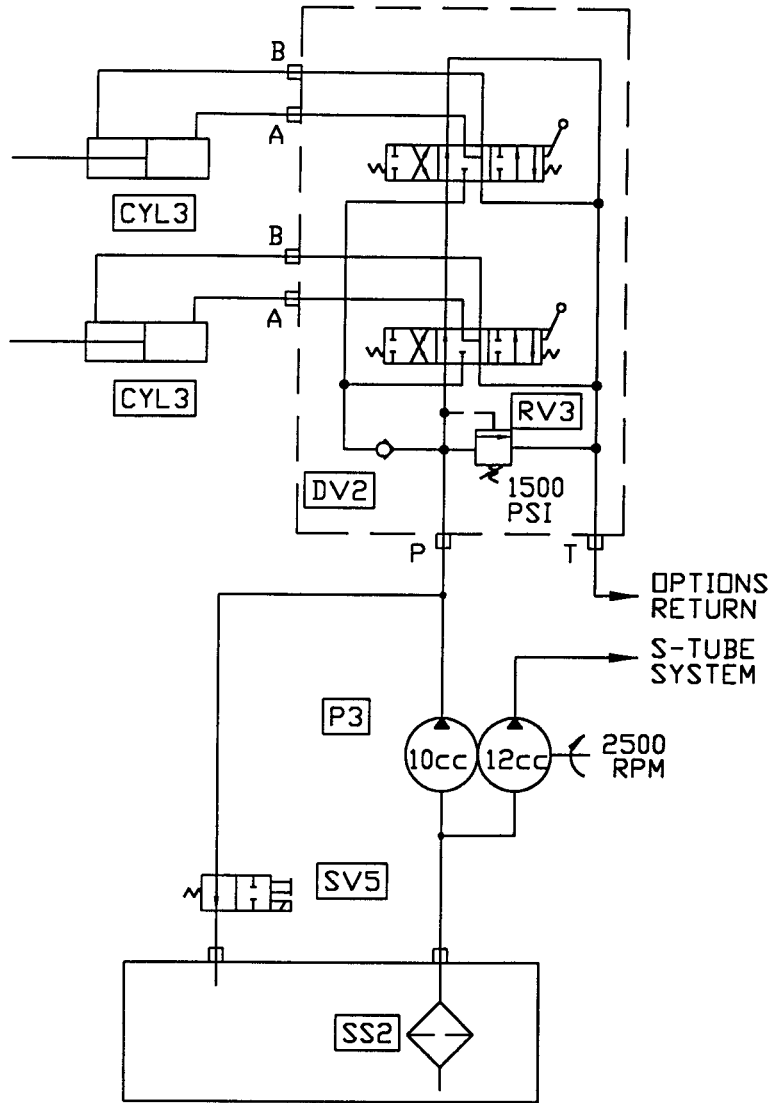
**SCMTC
PAGE 01**

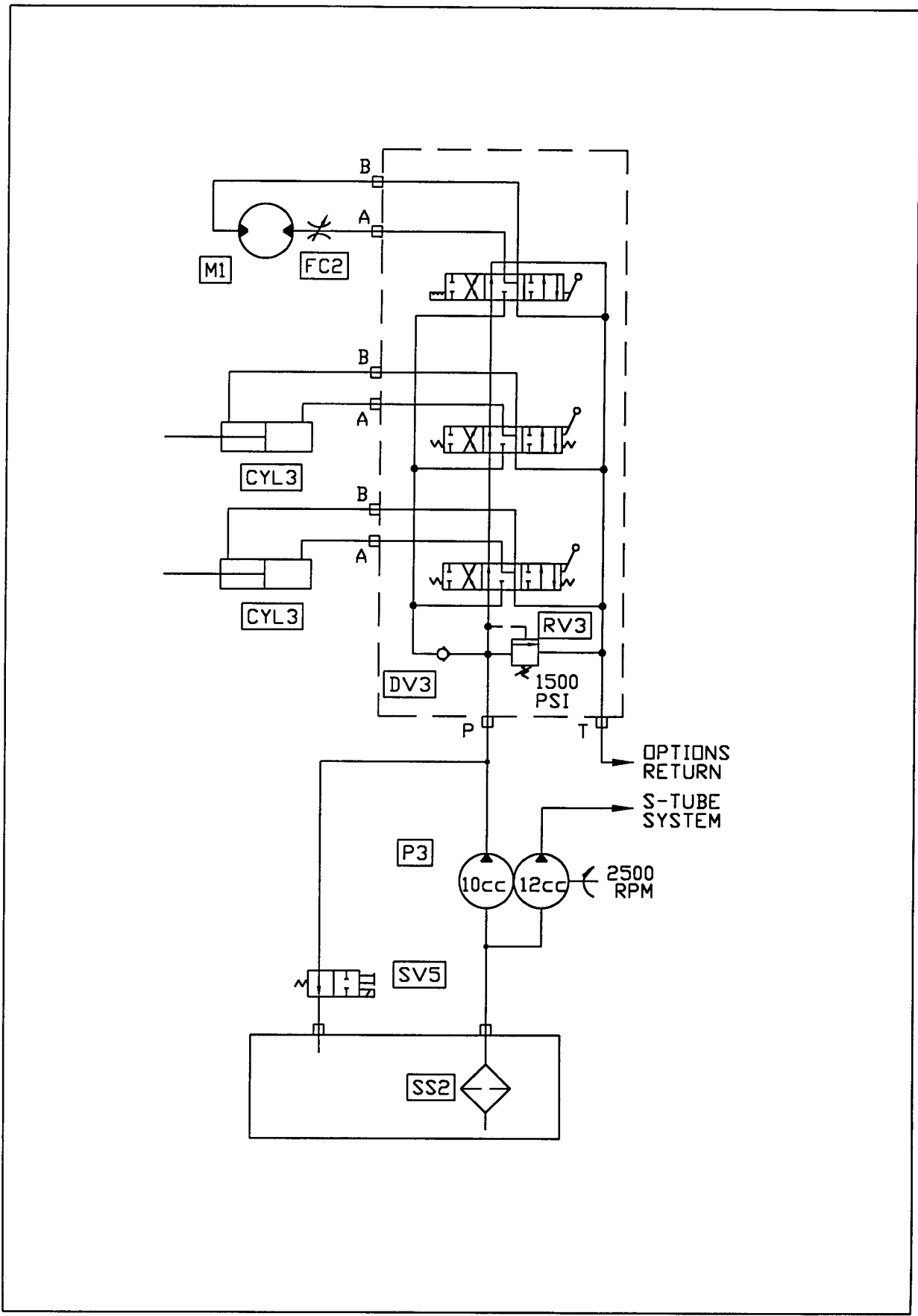
Code	Description	Part No.	Qty
DRIVE CYLINDER CIRCUIT			
P1	Main Pump - 45 cc	74450	1
CYL1	Hydraulic Drive Cylinder	79510	2
MAN1	Manifold - Drive Cylinder Circuit	85248	1
SV1	Solenoid Valve - Drive Cylinder Circuit	85689	1
SV1-1	Solenoid Valve - Main	85690	1
SV1-2	Solenoid Valve - Pilot	85691	1
	Coil for SV1-2	85692	2
RV1	Relief Valve Cartridge	85696	1
FC1	Flow Control Valve Cartridge	85697	1
C2	Check Valve Cartridge	85698	1
C1	Check Valve	78961	4
C3	Check Valve	85574	1
G1	Pressure Gauge - 6000 psi	74562	1
OC1	Oil Cooler	85713	1
RF1	Return Filter	85282	1
	Return Filter Element	85283	1
G3	Pressure Gauge - Return	85575	1
SS1	Magnetic Suction Strainer - 2"	801024	1
S-TUBE CIRCUIT			
P2	Gear Pump - 17 cc	72978	1
CYL2	S-Tube Shift Cylinder	75087	1
MAN2	Manifold - S-Tube Circuit	85249	1
SV2	Solenoid Valve - S-Tube Circuit	85693	1
SV2-1	Solenoid Valve - Main	85694	1
SV2-2	Solenoid Valve - Pilot	85695	1
	Coil for SV2-2	85692	2
SV3	Solenoid Valve Cartridge	85697	1
	Coil for SV3	85698	1
SV4	Solenoid Valve Cartridge	85699	1
	Coil for SV4	85700	1
RV2	Relief Valve Cartridge	85701	1
UV1	Unloading Valve Cartridge	85702	1
BV1	Ball Valve	85703	1
ACC1	Accumulator	74515	1
G2	Pressure Gauge - 3000 psi	70366	1
SS2	Magnetic Suction Strainer - 1 1/4"	79247	1













**B-Series
ELECTRICAL COMPONENTS**

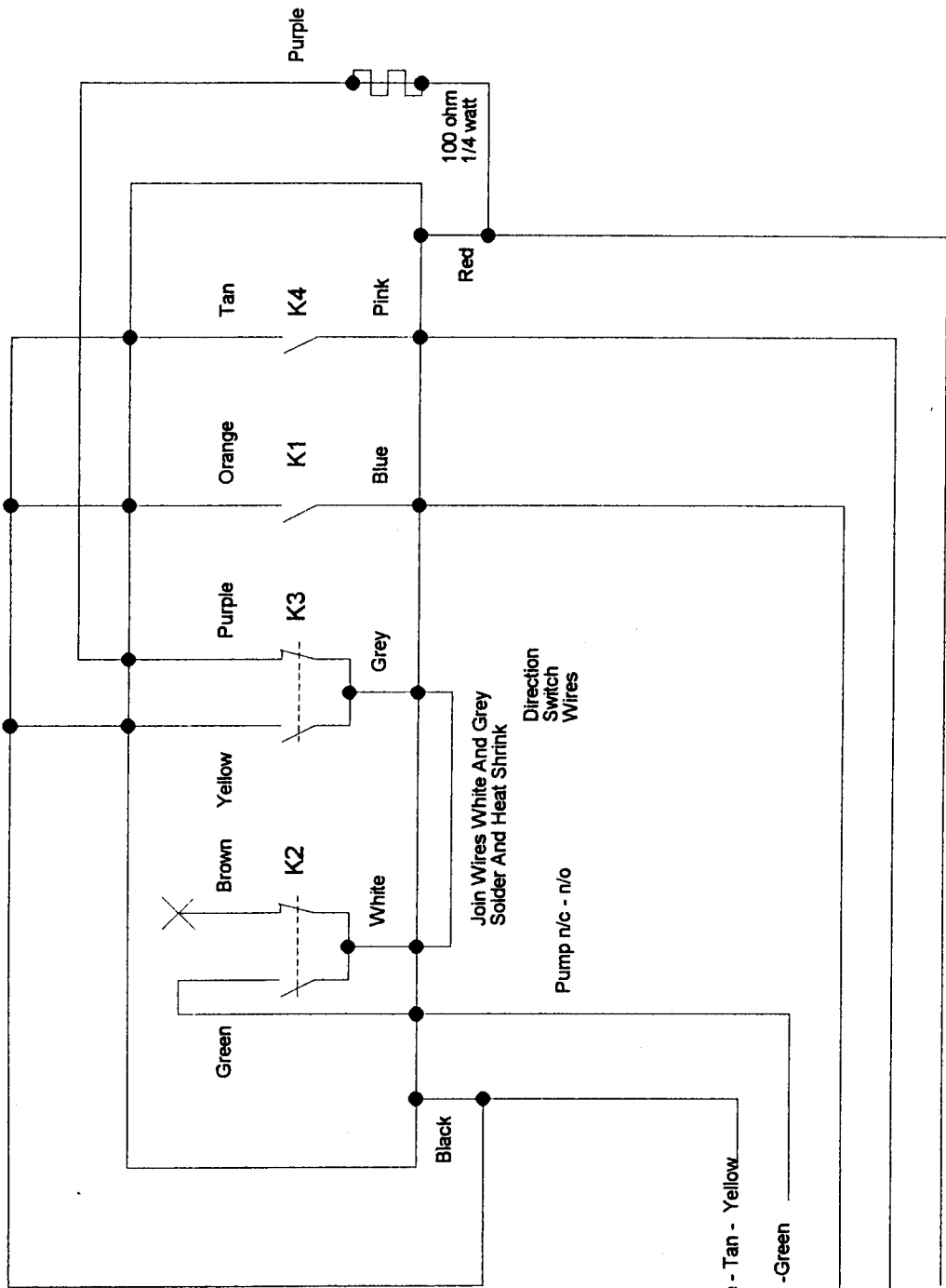
SCMTC
PAGE 08

Code	Description	Part No.	Qty	Location
SWITCHES				
1S1	Key Switch	71154	1	Control Panel
2S2	Toggle Switch, Horn	85347	1	Control Panel
3S3	Toggle Switch, Local/Remote	78563	1	Control Panel
3S4	Toggle Switch, Pump On/Reverse	72003	1	Control Panel
3S5	Toggle Switch, Test A/B	85346	1	Control Panel
3S6	E-Stop Switch	85342	1	Control Panel
	Contact Block, 1NC for 3S6	85343	1	Control Panel
3S7	E-Stop Switch	85342	1	Remote Control
	Contact Block, 1NC for 3S7	85343	1	Remote Control
3S8	Toggle Switch, Horn	85347	1	Remote Control
3S9	Toggle Switch, Pump On/Reverse	72003	1	Remote Control
RELAYS				
1K1	Relay, Engine Start	85348	1	Engine
LIGHTS				
1L1	Light, Green, Control On	85355	1	Control Panel
1L2	Light, Red, Oil Temperature	73775	1	Control Panel
1L3	Light, Red, Coolant Level	73775	1	Control Panel
1L4	Light, Red, Oil Pressure	73775	1	Control Panel
1L5	Light, Red, Alternator	73775	1	Control Panel
	Bulb for 1L2, 1L3, 1L4, 1L5	72022	4	Control Panel
2L6	Bulb, E-Stop	85344	1	Control Panel
2L7	Light, Green, Local	85355	1	Control Panel
3L8	Light, Yellow, Remote	85356	1	Control Panel
3L9	Light, Green, Pump On	85355	1	Control Panel
3L10	Light, Green, Reverse	85355	1	Control Panel
3L11	Bulb, E-Stop	85344	1	Remote Control
3L12	Light, Green, Pump On	85355	1	Remote Control
GAUGES				
1G1	Hour Meter	74240	1	Control Panel
1G2	Tachometer	78687	1	Control Panel
1G3	Coolant Temperature Gauge	78203	1	Control Panel

REED**B-Series
ELECTRICAL COMPONENTS**SCMTC
PAGE 09

Code	Description	Part No.	Qty	Location
FUSES				
1F1	Fuse, 25A	800447	1	Control Panel
1F2	Fuse, 10A	800449	1	Control Panel
1F3	Fuse, 5A	90392	1	Control Panel
2F4	Fuse, 10A	800449	1	Control Panel
2F5	Fuse, 10A	800449	1	Control Panel
2F6	Fuse, 10A	800449	1	Control Panel
2F7	Fuse, 5A	90392	1	Control Panel
2F8	Fuse, 5A	90392	1	Control Panel
	Fuse Block, 8 Way	85354	1	Control Panel
SOLENOID VALVE COILS				
1Y1	Coil, Fuel Solenoid	Deutz	1	Engine
1Y2	Coil, Accumulator Bypass	85700	1	S-Tube Manifold
1Y3	Coil, S-Tube Bypass	85702	1	S-Tube Manifold
1Y4	Coil, Agitator Bypass	73184	1	Hyd. Tank
2Y5	Coil, Cylinder "B"	85692	1	S-Tube Manifold
2Y6	Coil, Cylinder "A"	85692	1	S-Tube Manifold
2Y7	Coil, S-Tube Shift "A"	85692	1	Pump Manifold
2Y8	Coil, S-Tube Shift "B"	85692	1	Pump Manifold
	Plugs for 1Y2 thru 2Y8	74597	7	Manifolds
MISCELLANEOUS				
2BB1	Black Box, Pump Control	85334	1	Control Box
2BB2	Black Box, E-Stop Logic	85596	1	Control Box
2P1	Proximity Switch, Cyl "B"	77998	1	Water Box
2P2	Proximity Switch, Cyl "A"	77998	1	Water Box
2H1	Horn	800347	1	Control Box
3R1	Resistor, 100 Ohm	72777	1	Remote Control
CONNECTORS				
X1	Connector Insert, 24 Pin, Female	78696	1	Control Box
X1	Connector Base	78697	1	Control Box
X1	Connector Insert, 24 Pin, Male	78695	1	Harness
X1	Connector Hood	800424	1	Harness
X2	Terminal Block	72820	8	Control Box
X3	Connector Insert, 10 Pin, Female	79963	1	Control Box
X3	Connector Base	79965	1	Control Box
X3	Connector Insert, 10 Pin, Male	79964	1	Remote Control
X3	Connector Hood	79966	1	Remote Control
X4	Connector, Engine, White	72926	1	Harness
X5	Connector, Engine, Yellow	76902	1	Harness

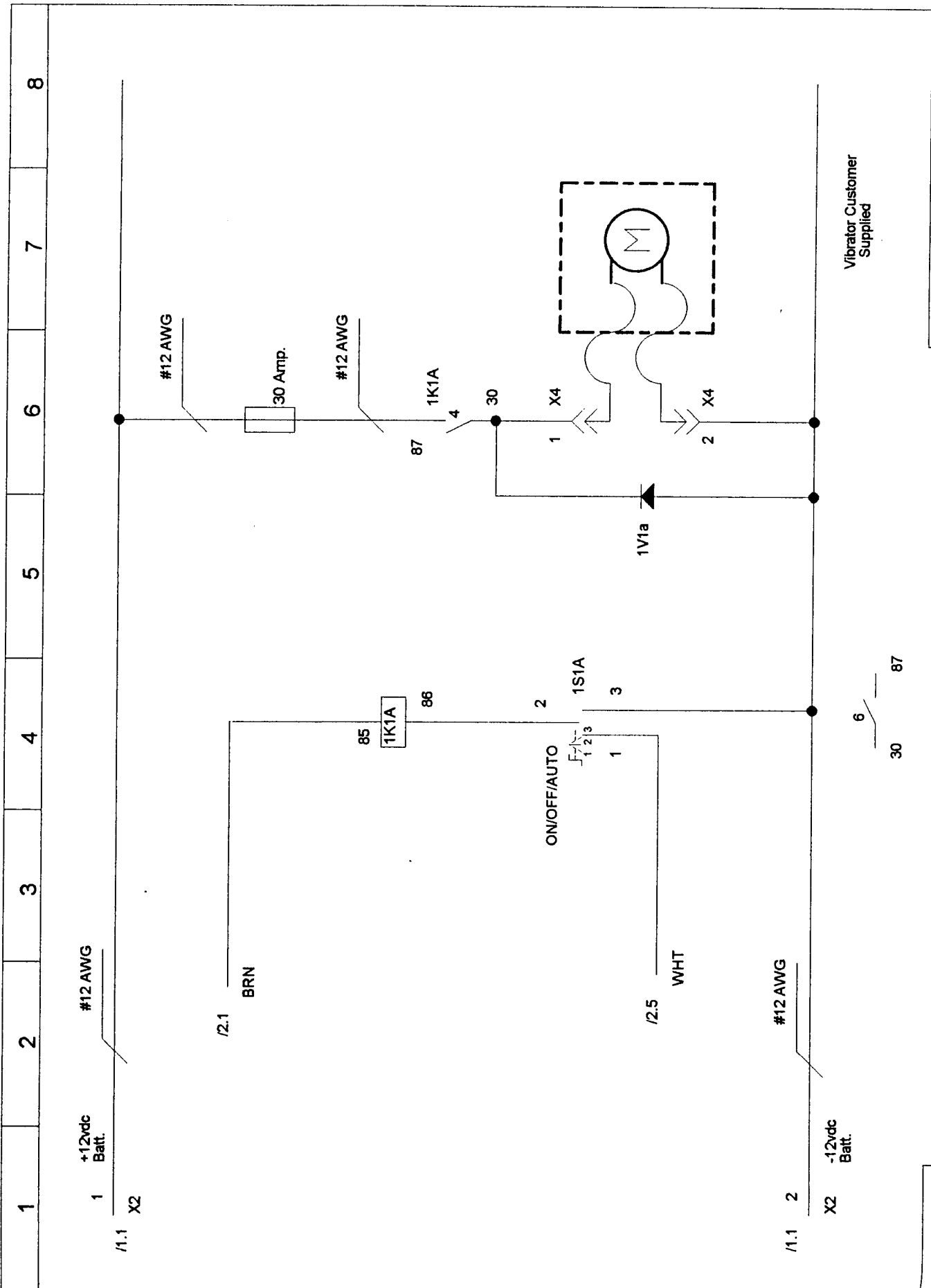
1 2 3 4 5 6 7 8



Pin #

- #2 -12vdc Wire - Black - Orange - Tan - Yellow
- #3 Pump/Forward/Reverse Wire -Green
- #6 "E" Stop Wire - Blue
- #8 Horn Wire - Pink
- #10 +12vdc Wire - Red - Purple

100 ohm



Vibrator Customer Supplied

REED

B SERIES

Vibrator Optionn

Page 1a

1 2 3 4 5 6 7 8

#12 AWG

+12Vdc Batt.

1/1.1 X2

1/2.1

BRN

30 Amp.

#12 AWG

1K1A

4

30

ON/OFF/AUTO

1S1A

1V1a

WHT

1

#12 AWG

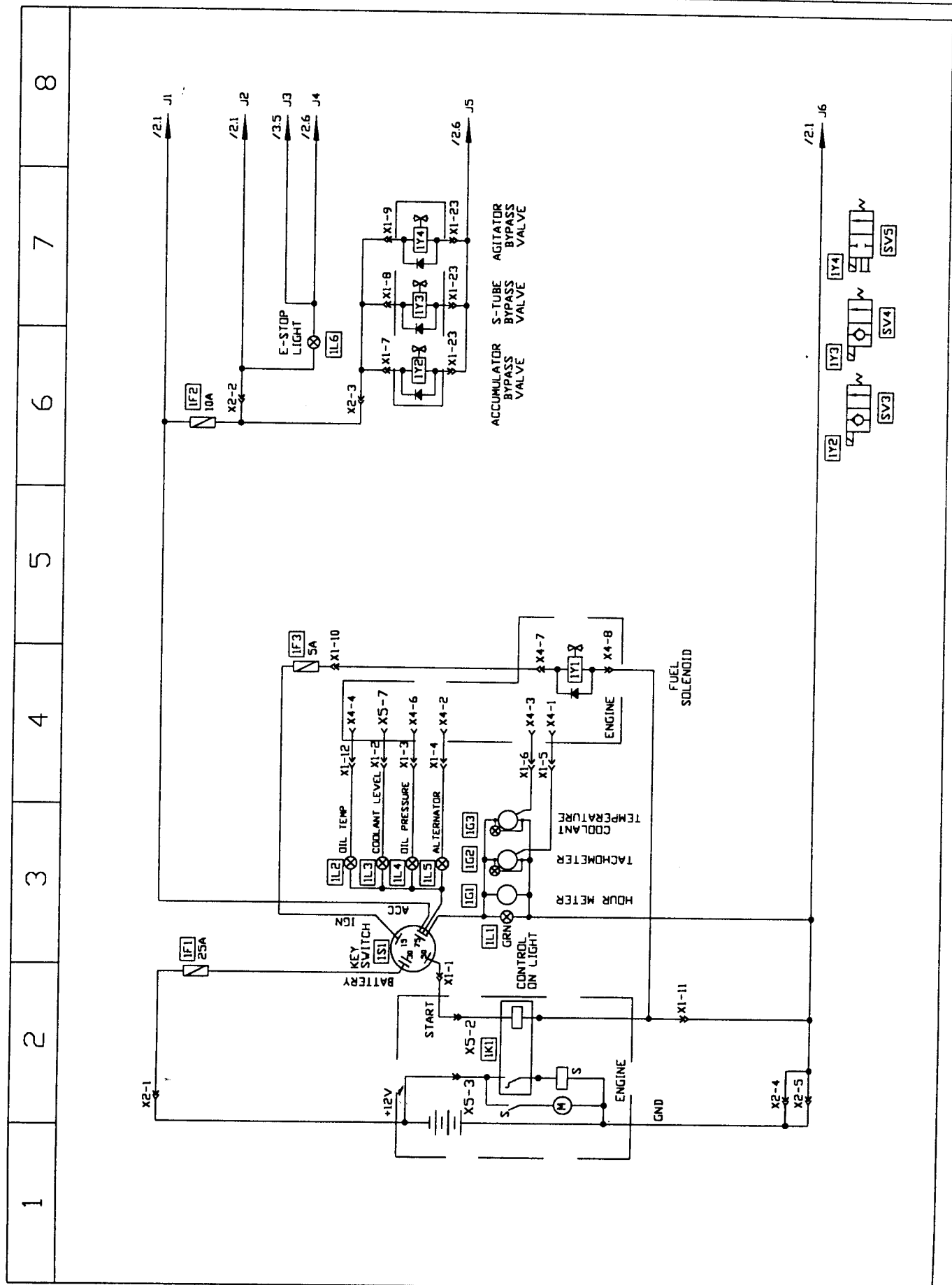
1/1.1 2

X2 -12Vdc Batt.

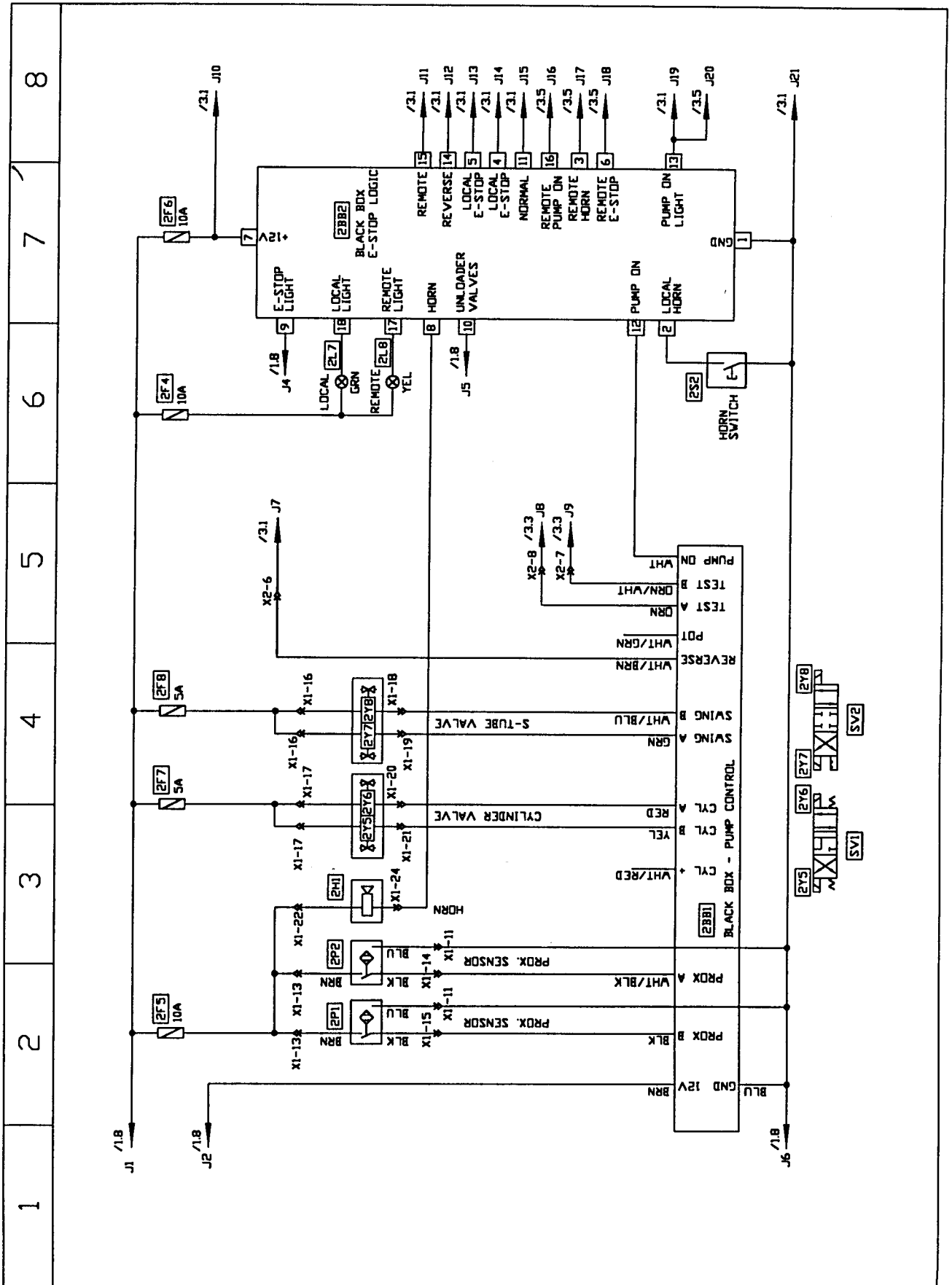
6

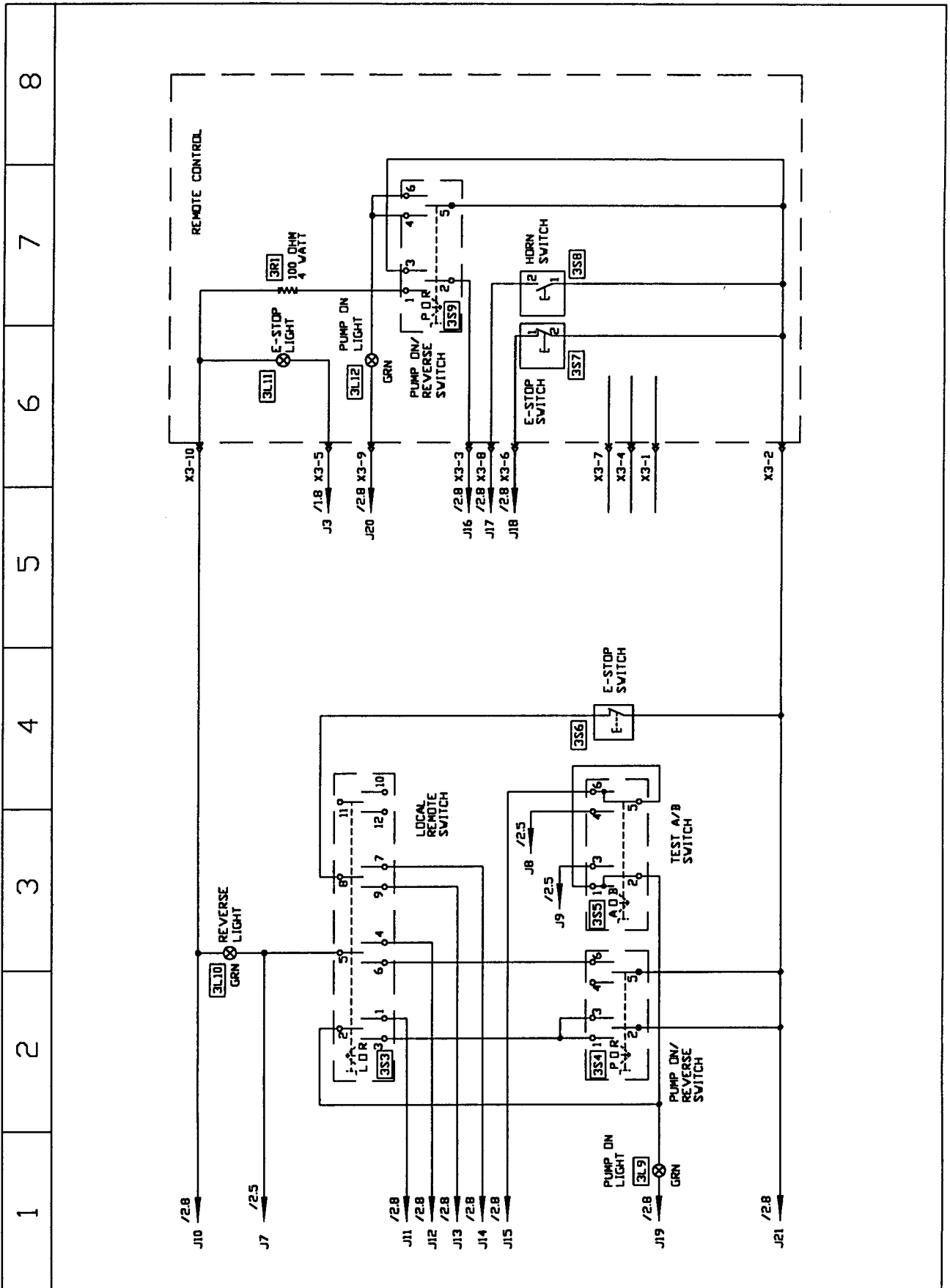
30 87

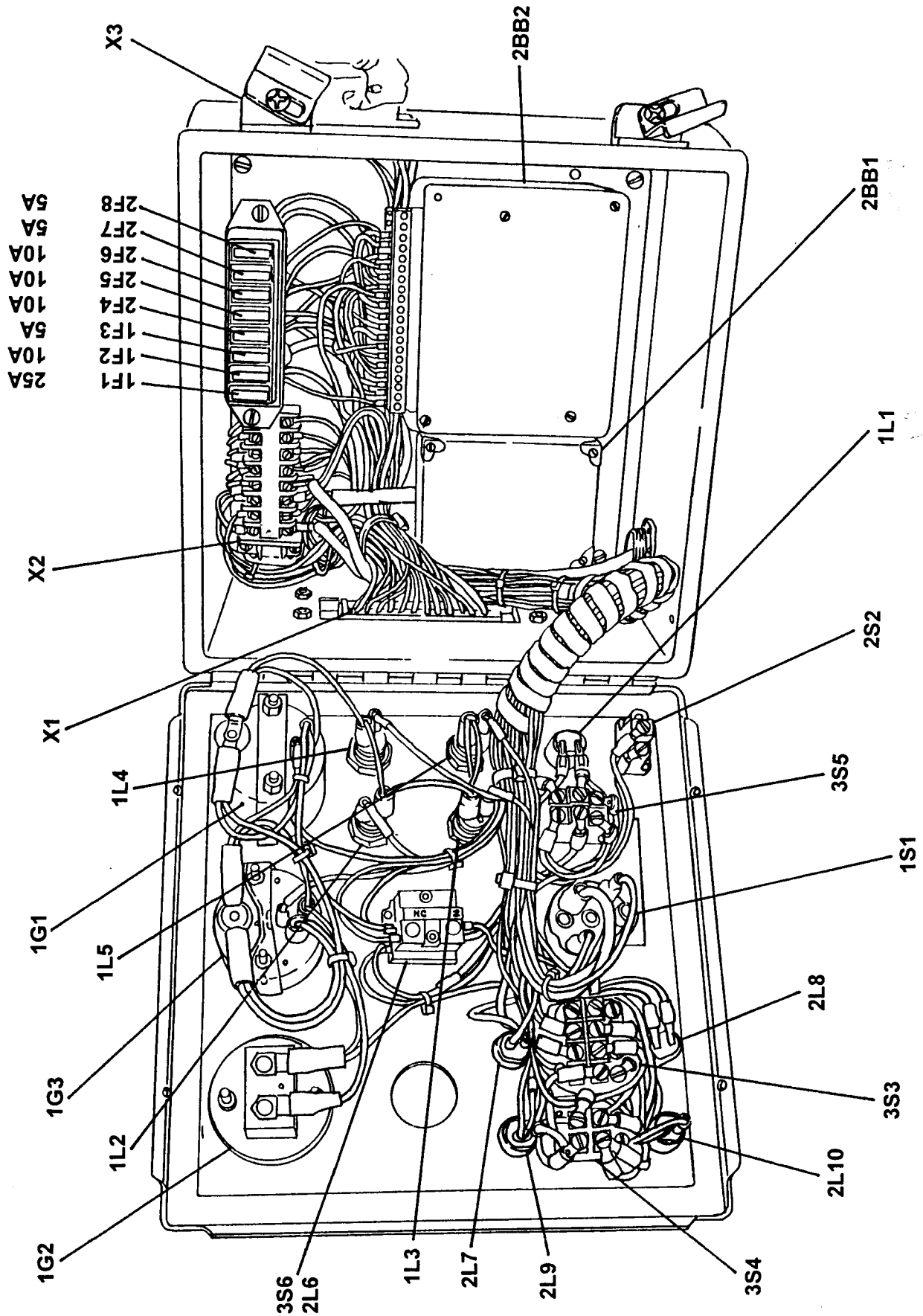
REED



1	2	3	4	5	6	7	8
---	---	---	---	---	---	---	---

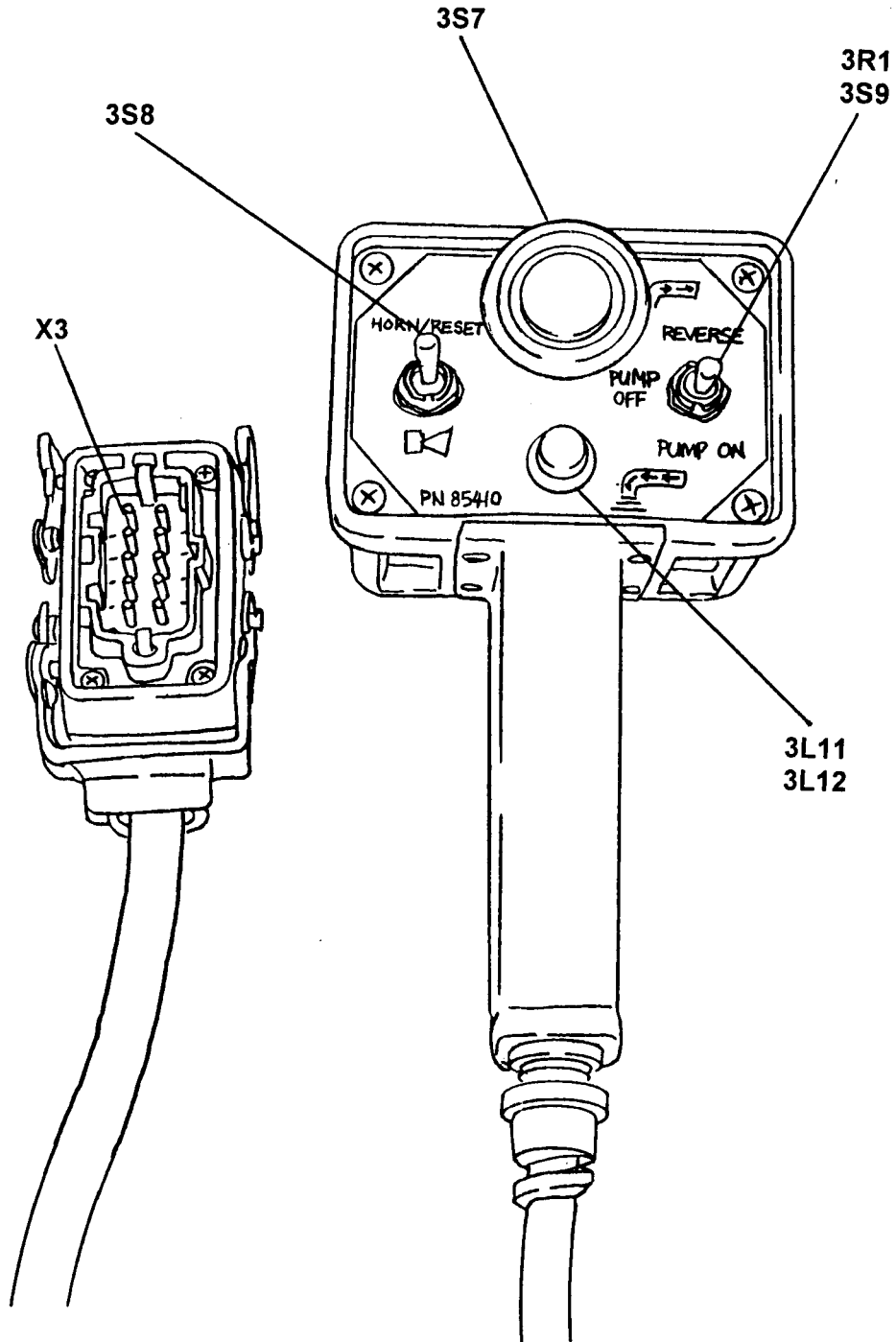








TRAILER MOUNTED PUMP MODEL B30
REMOTE CONTROL
ELECTRICAL COMPONENTS

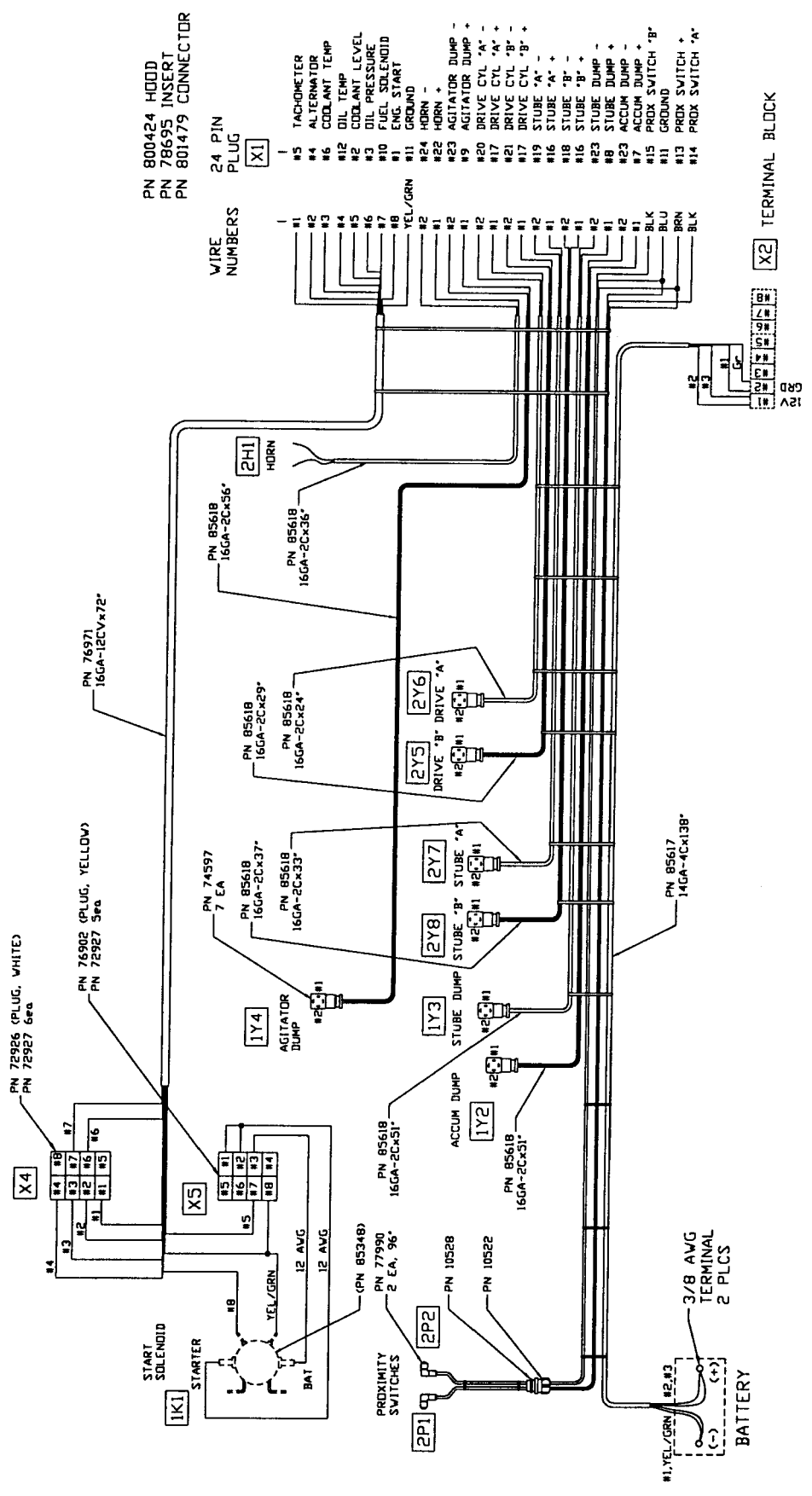




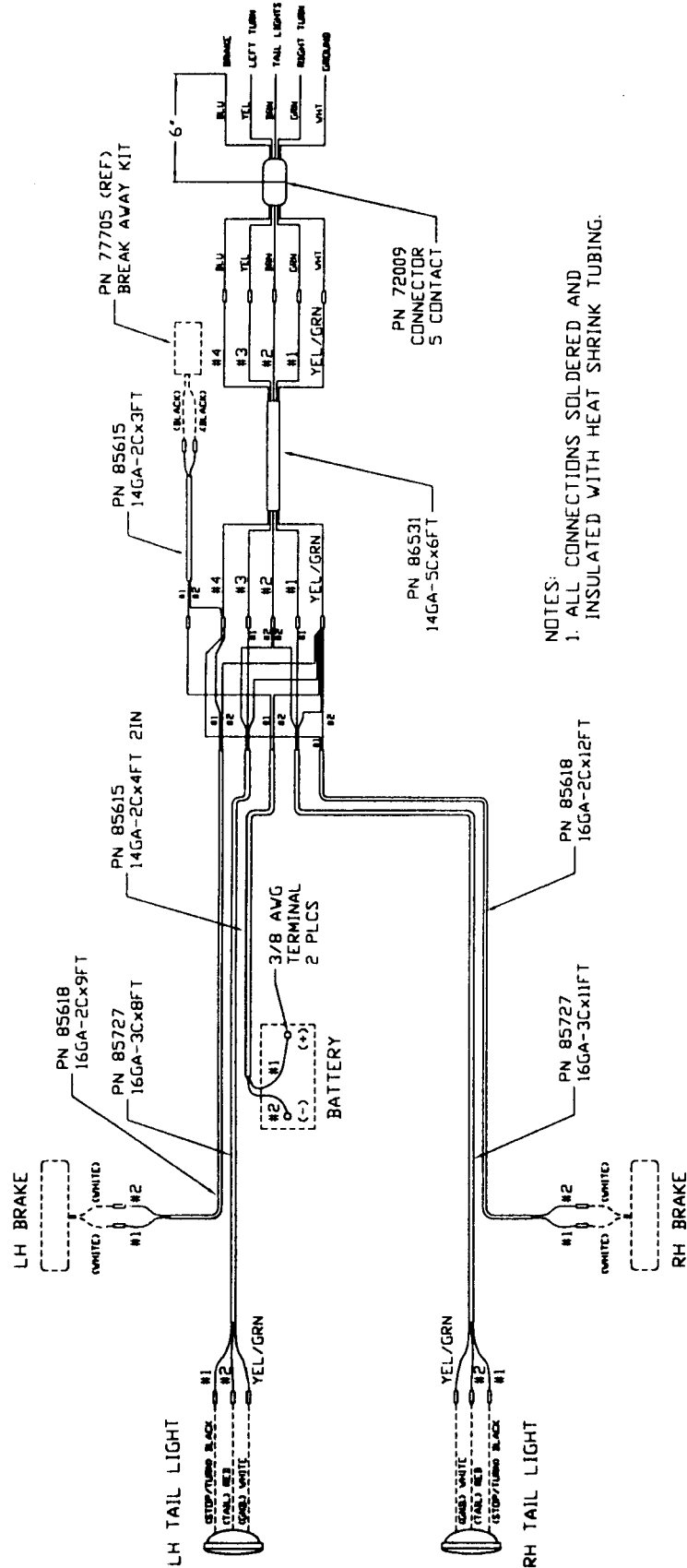
B SERIES

WIRING HARNESS

SCMTC
PAGE 15



REVISION



NOTES:
1. ALL CONNECTIONS SOLDERED AND INSULATED WITH HEAT SHRINK TUBING.



TRAILER MOUNTED PUMP MODEL B30 HYDRAULIC HOSE KIT

SCMTC

PAGE 17

No.	Part No.	End #1	End #2
H01	85666-001	Main Pump "P"	Cylinder Manifold "P1"
H02	85666-001	Cylinder Bulkhead "A"	Cylinder "A"
H03	85666-001	Cylinder Bulkhead "B"	Cylinder "B"
H04	85659-001	Main pump load sense	Cylinder Manifold "LS"
H05	85657-001	Main pump case drain	Tank return
H06	85654-001	Cylinder Manifold "T1"	Oil Cooler "IN"
H07	85654-001	Oil Cooler "OUT"	Return Filter Bulkhead
H08	85659-002	Check Loop	
H09	85659-002	Check Loop	
H10	85659-002	Check Loop	
H10	85659-002	Check Loop	
H11	85659-002	Check Loop	
H12	85664-001	Tank suction	Gear Pump "S"
H13	85657-002	Gear Pump "P"	S-Tube Manifold "P2"
H14	85667-001	S-Tube Manifold "ACC"	Accumulator
H15	85657-002	Bulkhead "A"	Shift cylinder bore side
H16	85657-002	Bulkhead "B"	Shift cylinder rod side
H17	85669-001	Fuel Tank Suction	Fuel Filter "IN"
H18	85669-002	Fuel Filter "OUT"	Engine
SUCTION HOSES			
B50	85660-001	Tank suction	Main Pump "S"
TANDEM PUMP			
H01	85663-001	Tank Suction	Tandem Pump "S"
H02	85657-003	Tandem Pump "P"	Bulkhead Tee "P"
H03	85657-002	Bulkhead Tee "P"	Bypass Valve "1"
H04	85657-005	Bulkhead "T"	Cylinder Manifold "T1"
AGITATOR VALVE			
H01	85657-002	Bulkhead "P"	Manual Valve "P"
H02	85657-002	Manual Valve "T"	Bulkhead "T"
AGITATOR / OUTRIGGER VALVE			
H01	85657-001	Bulkhead "P"	Manual Valve "P"
H02	85657-002	Manual Valve "T"	Bulkhead "T"
AGITATOR			
H01	85658-001	Agitator Valve "A"	Agitator Motor "A" Flow Control
H02	85658-002	Agitator Valve "B"	Agitator Motor "B"
OUTRIGGERS			
H01	85659-003	O/R Valve "A"	RH Outrigger Bore
H02	85659-003	O/R Valve "B"	RH Outrigger Rod
H03	85659-003	O/R Valve Tube "A"	LH Outrigger Bore
H04	85659-003	O/R Valve Tube "B"	LH Outrigger Rod
FUEL RETURN			
	74716	Engine	Fuel Tank Return

REED

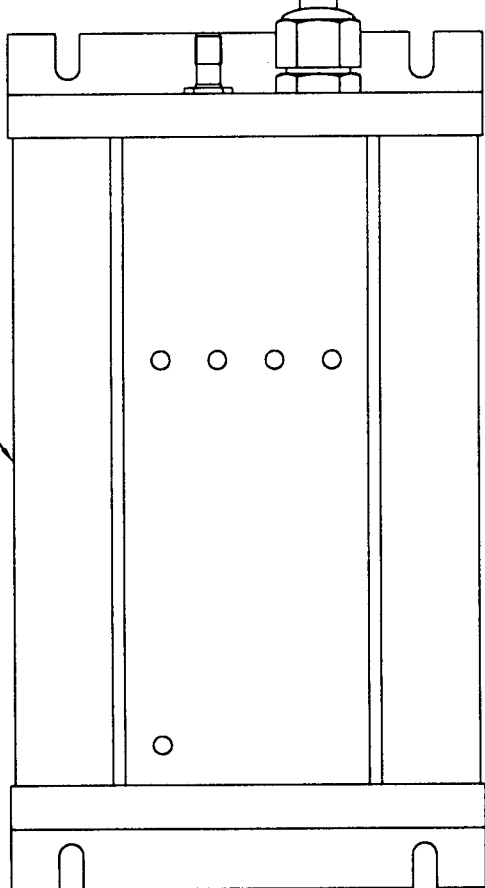
B - SERIES OPTIONAL RADIO REMOTE CONTROL WIRING DIAGRAM

SCMTC

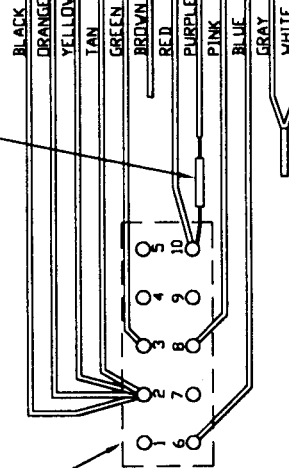
OPTION

X3 PIN	FUNCTION
1	
2	GROUND
3	PUMP ON/REV.
4	
5	
6	'E' STOP
7	
8	HORN
9	
10	+12 vdc

PN 85818
RADIO REMOTE



PN 72777 RESISTOR 100 ohm
SOLDER AND COVER WITH HEAT SHRINK



SOLDER AND COVER WITH HEAT SHRINK

PN 79964
10 PIN PLUG

PN 79966
HOUSING

X3