



JOB NUMBER: V69086

BUILD ORDER

SALE	CONSIGNMENT	DEMO	RENTAL	ORIGINATED BY:
CE <u>071008-001</u>	X1- _____	X2- _____	X3- _____	<i>[Signature]</i>

CUSTOMER: LIDER EXPORT

ORDER DATE: 3-10-2008

MODEL: XXT42RZ

COMPLETION DATE: 3-14-2008

SERIAL #: 08-255

VIN #: 1M2K201C06M028213

PART #: XXT42.5-V04

OPTIONS/INSTRUCTIONS:

(1) ENGINEERING (Specials Only): _____ DATE

(2) PRODUCTION CONTROL: *MP* 3/10/08 DATE

Copy to: PRODUCTION (Build Order Only)
CUSTOMER SERVICE
ACCOUNTING (Original attached to Order Acknowledgment)

Truck



IN TEST

SOP BUILD ORDER

MFG.
ORDER #: VL 9086

S/N: 07-255

CUSTOMER REED

COMPLETION DATE: _____

MODEL: XXT42

PART #: XXT42.5-V04

SPECIAL INSTRUCTIONS/OPTIONS:

In test

(1) ORDER ORIGINATED BY: SOP

(2) ORDER APPROVED BY: JIM SHEA

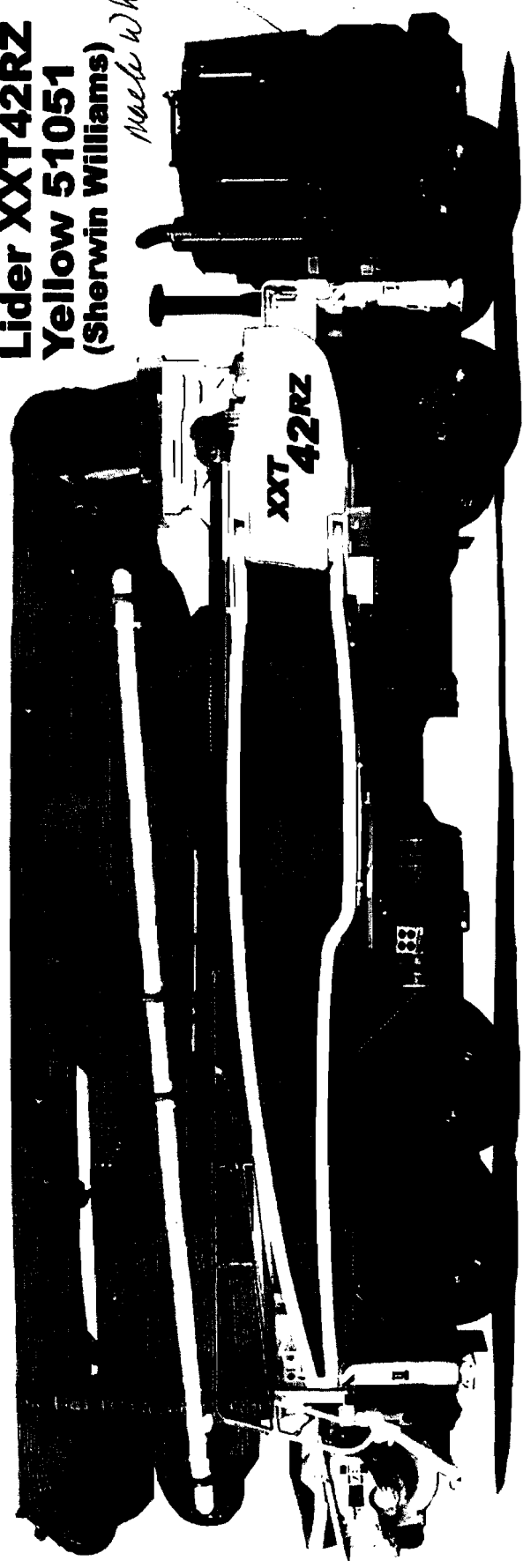
(3) PRODUCTION CONTROL: GP *ms 3/29* DATE

Copies to: MANUFACTURING ORDER
KEEP WITH PARTS AND/OR UNIT
BUILD ORDER RACK ON ASSY FLOOR
PRODUCTION CONTROL

TRUCK

Lider XXT42RZ
Yellow 51051
(Sherwin Williams)

neck white
Body
Stripes



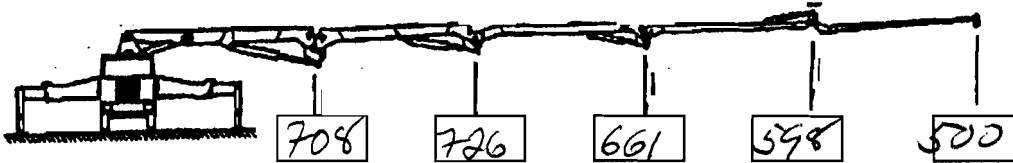
BOOM AND OUTRIGGER STABILITY TESTS 42 Meter 5 Sections RZ-Fold

Date: 8-17-07	Verify Machine Model: XYT-427.5	REED Serial #:
Customer:	Truck VIN: 3M2K201C06M028213	Truck Serial #:
Work Order #:	WZ Serial #: 4780	

BOOM STABILITY TEST

UL-9086

Boom Manufacturer:	Boom Serial #: 4780
Pedestal Manufacturer:	Pedestal Serial #: DSS E 022



STABILITY TEST ACTUAL WEIGHTS (With Pipeline / WithOUT End-hose in LBS)

A **708** B **726** C **661** D **598** E **500**

Checked: _____

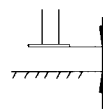
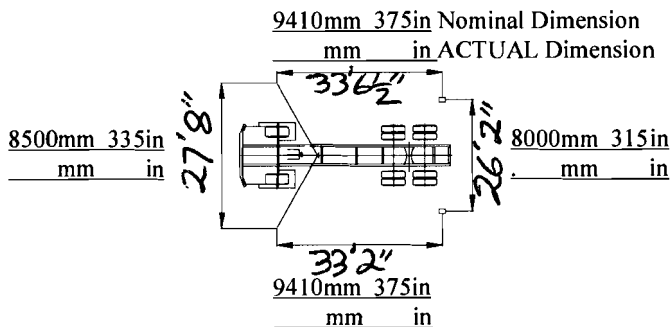
TIME AND PRESSURE TESTS

	Element A	Element B	Element C	Element D	Element E	Rotation
Theoretical Times	104 sec	145 sec	140 sec	68 sec	55sec	212 sec
Time UP						
Time DOWN						
Head Side Pressure	310 bar	310 bar	310 bar	280 bar	280 bar	
Rod Side Pressure	340 bar	340 bar	340 bar	310 bar	310 bar	

Check for Section Minimum Drift and Holding Valve Leakage Under Load

Checked: _____

OUTRIGGER STABILITY TESTS



Outrigger Foot Lift		
FRONT	REAR	
in	in	RIGHT
in	in	LEFT

	Leakage Check		Leakage Check
Right Front Jack Cylinder		Left Front Jack Cylinder	
Right Front Telescope Out		Left Front Telescope Out	
Right Front Swing Out		Left Front Swing Out	
Right Rear Swing Out		Left Rear Swing Out	
Right Rear Jack Cylinder		Left Rear Jack Cylinder	

Checked: _____

TEST RESULTS: O.K.	
NAME: JUANE REMUS	DATE: 8-17-07
SIGNATURE: <i>Juane Remus</i>	DATE: _____

LN-TEST

JOB #	XT38-100 XXT42-Z 5 SN #	
	customer:	
VL	BOOM MAKE UP PIPE LENGTHS	
9086	ARM	LENGTH
	A	90"
	B	42 1/2"
	B-C	43"
	C	29 1/4"
	C-D	22"
	D	16"
	E	20 1/4"
	PIPE TYPE (Ultra III or Normal?)	
	TIP HOSE SIZE	
	SPECIAL ELBOWS	
	Turret	A sect
	A sect	B sect
	B sect	C sect
	C sect	D sect
	D sect	E sect
	short 90° elbow	
	short 90° elbow	
	DECK MAKE UP PIPE LENGTHS	
	PIPE	LENGTH
	#1	10"
	#2	66"
	#3	
	SPECIAL ELBOWS	803027
	TURRET PIPE	35"
	DECK DELIVERY LINE COMPONENTS	
	HOPPER ELBOW	803024
	ELBOW 6"	803025
	REDUCER	803026
	SPECIAL TURRET ELBOW	29" long A-1071B
	RADIO REMOTE SERIAL NUMBER	
	RADIO REMOTE	735-0501751
	CABLE REMOTE	007-0905
	TRUCK	
		SERIAL #
		1M2K201C06H028213
	BOOM SIZE	
		SERIAL #
	XT38-100 XXT42-Z	4780
	BOOM SIZE---	
		SERIAL #
	PEDESTAL	DSJ E 022
	A SECTION	CB.1.120.5
	B SECTION	CB.1.124.5
	C SECTION	CB.1.126.5
	D SECTION	CB.1.128.5
	E SECTION	CB.1.130.5

w/s pipes

→ 29" ←

F MAST

S 890
RM.1.154.3

4/2/07

42 VL 9086

- ~~ACC LEAKS @ 1st Fitting - Need to remove~~
- ~~Back tank drain valve leaks.~~
- ~~Fest #1/B not wkg~~
- ~~FWD REV BACKWARDS~~
- ~~Push tube on Pass side of the pump~~
- ~~Outriggers not wkg.~~
- ~~Need FRA RADIS BATTERY~~
- ~~Weld Pump Return Line Clamp Bead @~~

max fuel

~~Rt rear overrigger stop~~

~~Outrigger locks down lineup - either side~~

~~Pass sulfonate on telephone at offset~~

~~Stuff clamp around box~~

~~Mount gauge mount~~

~~Check oil level in rotor~~

~~Rear tail light mounting skirt bend~~

Q.C. & PUMP OPERATIONAL TEST	WORK ORDER
---	---

DESCRIPTION OF ITEM INSPECTION	OK INIT.	CORRECTION MADE
1. Q.C. INSPECTION PACKAGE		
All forms in package	<i>mn</i>	
All shortages in package	<i>mn</i>	
2. BUILD ORDER REVIEW		
Truck built per build order	<i>mn</i>	
Options installed per build order	<i>mn</i>	
Oil type required	<i>mn</i>	
Defeciencies noted	<i>mn</i>	
3. PRELIMINARY WALK AROUND		
Components installed properly	<i>mn</i>	
Proper hose & wire routing	<i>mn</i>	
Bolts & fittings tight	<i>mn</i>	
Defeciencies corrected	<i>mn</i>	
4. FLUID LEVELS		
Engine oil	<i>mn</i>	
Coolant	<i>mn</i>	
Boom tank hydraulic oil	<i>mn</i>	Type <i>46</i>
Main tank hydraulic oil	<i>mn</i>	Type <i>46</i>
Auto lube grease	<i>mn</i>	
Flush box - Oil & water	<i>mn</i>	
5. PRE START UP		
Filling & bleeding of hydraulic system	<i>mn</i>	

SHORTAGES	CORR INIT.

COMMENTS	

Q.C. & PUMP OPERATIONAL TEST	WORK ORDER
---	---

DESCRIPTION OF ITEM INSPECTION	OK INIT.	CORRECTION MADE
6. FILTRATION OF SYSTEM (2 Hour time period)	<i>nm</i>	
7. R.P.M. CHECK		
800 Idle	<i>nm</i>	
1600 Pumping	<i>nm</i>	
8. CHARGE PRESSURE ADJUSTMENT		
34 Bar - (+0 -1)	<i>nm</i>	
9. PUMP CENTERING ADJUSTMENT	<i>nm</i>	
10. MAXIMUM PRESSURE CHECK		
345 Bar	<i>nm</i>	
11. BLACK BOX ADJUSTMENT		
6-19 Bar	<i>nm</i>	<i>NR</i>
12. A-10 PUMP ADJUSTMENT		
Load sense screw fully in	<i>nm</i>	
Pressure compensator 190 Bar	<i>nm</i>	
OFFICE	<i>nm</i>	
13. REMIXER PRESSURE ADJUSTMENT		
190 Bar	<i>nm</i>	
14. COOLER RELIEF ADJUSTMENT		
30 Bar	<i>nm</i>	

SHORTAGES	CORR INIT.

COMMENTS	

Q.C. & PUMP OPERATIONAL TEST	WORK ORDER _____
---	------------------

DESCRIPTION OF ITEM INSPECTION	OK INIT.	CORRECTION MADE
15. FLUSHING VALVE ADJUSTMENT		
Should be 25.8 G.P.M. (+0-.5)	<i>mw</i>	
Evenly balanced	<i>mw</i>	
16. MAXIMUM CYCLES PER MINUTE CHECK		Main Control Box ---
30 (+ or - 1)	<i>27</i>	Radio Control ----
		Cable Remote---
17. CYCLE TEST		
8 Hour time period	<i>MARTIN</i>	
Documentation of test sheets		
18. WATER PUMP ADJUSTMENT		
Relief set to attain maximum flow without swelling of hose when nozzle is closed		
19. BOOM VALVE PRESSURE ADJUSTMENT		
340 Bar--- (XT-32 & XT-36)		
350 Bar--- (XXT-42)		
20 BOOM RADIO CONTROL PARAMETERS CHECK.		
21 OUTRIGGER PRESSURE ADJUSTMENT		
Main block relief--250 Bar (+or- 1)		
XT-36 Extension relief--60 Bar (+or- 1)		<i>(SEE NOTE BELOW)</i>
XXT-32 or 42 Extension relief--60 Bar		
XXT-32 or 42 front swing out relief--60 Bar (+or- 1)		

SHORTAGES	CORR INIT.

COMMENTS

NOTE...REFER TO TEST PROCEDURE WORK INSTRUCTIONS FOR ADJUSTMENT METHODS.

*NEW O/RIGGER CONTROL VALVES (PIN 802727 + 802728)
 REQUIRE EXTENSION RELIEF ADJUSTED TO 120 BAR.
 7-3-03 (FIRST VALVES USED) XT-36*

BOOM TESTING & ADJUSTMENTS	WORK ORDER
---------------------------------------	---

DESCRIPTION OF ITEM INSPECTION	OK INIT.	CORRECTION MADE
1. Perform directional operational check Make necessary electrical / hydraulic changes		
2. Check for correct spool sizes in boom control valve		
Outrigger = 40/40		
Rotation = 40/40		
A- Boom = 40/40		
B- Boom = 40/40		
C- Boom = 25/25		
D- Boom = 25/16		
3. Check for smoothness of boom operation		
4. Check " Teach " function operation Make adjustments as necessary		
5. Check boom function speeds		
(A- Boom = 70/70 secs.)	() secs.	
(B- Boom = 90/90 secs.)	() secs.	
(C- Boom = 65/65 secs.)	() secs.	
(D- Boom = 45/45 secs.)	() secs.	
(Rotation = 70/70 secs.---180 degrees)	() secs.	
NOTE...Suggested speeds are sufficient, if within (+ or - 15 %)		
Documentation of speeds		

SHORTAGES	CORR INIT.

COMMENTS

NOTE...REFER TO " TEST PROCEDURE WORK INSTRUCTIONS " for proper adjustment and operational instructions.

REED
XT-36

QUALITY ASSURANCE INSPECTION CHECK LIST
TRUCK MOUNTED CONCRETE PUMP

INSPECTED BY _____ DATE _____

BOOM TESTING & ADJUSTMENTS WORK ORDER

DESCRIPTION OF ITEM INSPECTION	OK INIT.	CORRECTION MADE
6. "D " Boom rest installation		
7. Proper operation of boom limit switch Adjustment of switch actuating arm		

SHORTAGES

CORR INIT.

--	--

COMMENTS

CHASSIS INSPECTION CHECK LIST

MFG TEL-2006 MODEL M2688S 295 w/ VIN 1M2K20/C06M028213

DESCRIPTION	DESCRIPTION	DESCRIPTION
A-CAB	• Mirrors RH & LH	F-PAINT
• Lift/Tilt w/Pump	• Parking Brake w/Light	• Cab Ext-Mack White
• Cigar Lighter	• Mud Flaps-24"-Frnt Fender	
• Dome Light w/SW	• Radio AM-FM	
• Door-Slide Type Window	• Antenna-Roof Mtd.	G-INFORMATION
• Fenders-Cab	• Seat-Driver Air Susp.	• Manuals-Protection Plan Service
• Floor Mats-Rubber	• Seat-Rider Fixed	• Safety Kit
• Gauges	• Seat Belts-Lap & Shoulder	
• Dual Air Pressure	• Turn Signal Switch - Manual	
• Voltmeter		H-MISCELLANEOUS
• Eng. Coolant Temp.		• Exterior Paint Damage
• Eng. Oil Pressure		• Window Damage
• Fuel Level		• Dents
• English Display	B-FRAME-FUEL TANK	
• Speedometer w/Trip Odometer	• Bumper Channel Type Extended 63"	
• Eng. Tach w/ Hourmeter	• Towing Device Frt-Pin	I-DRIVE TRAIN
• Glass-Tinted Windows	• Fuel Tank LH 80 Gal RD.	• MACK MD209 Transmission
• Glove Box		• Range selector valve tight
• Grab Handles - Ext.		
• RH & LH Behind Door	C-FRONT AXLE	
• Grab Handles - Int.	• Capacity 20000 lbs	
• Windshield Post RH-LH	• Tires Tubeless Radial	J-COMMENTS
• Instr. Panel RH	• Size 425/65R 22.5 18S	OK
• Hi-Beam Indicator Light	• Wheels-Alum Disc 10 Hole	
• Horn		
• Air Twin Trumpet		
• Electric Single Tone	D-REAR AXLE-TANDEM	
• Lights	• Capacity 44000 lbs	
• Marker & Clearance (7)	• Tires (8) 11R-22.5-14G	
• Side Markers	• Air Brakes	
• Turn Signals-Front	• Wheels-Alum Disc-10 Holes	
• Headlights (2) Conv 7" RD		
• Rear (2) Stop, Direct, Back up	E-ELECTRICAL	
• Signal Flasher Type	• Back up Alarm	
• Interior Trim - White	• Battery Box Covers	
• Low Air Indicator Light & Buzz	• Daytime Running Lights	

Odometer Reading 3043.9 Hourmeter Reading 72.8

Inspected By Roder A. Hill ^{11/10/05} IN Date 11/4/05

[Signature]



**VEHICLE IDENTIFICATION NUMBER-FORM
FOR BOOM PUMP TRUCK - (YELLOW)**

DATE: 3/28/2008

CUSTOMER: LIDER EXPORT

REED MODEL NUMBER: XXT-42.5R2

REED SERIAL NUMBER: 08-255

* VEHICLE IDENTIFICATION NUMBER: 1M2K201C06M028213

LABEL INFORMATION - (AREAS TO FILL)

1. MFD. BY: REED LLC
2. DATE OF MFR: MO. 03 YR. 2008
3. GVWR: 38102 KG (84000 LB)
4. GAWR-FRONT 18144 KG (40000 LB)
5. WITH 4.5/65R22.5L TIRES,
6. 22.5X12.25 RIMS, @ 827 KPA
7. (120 PSI) COLD SINGLE
8. GAWR-INTERMEDIATE (1) KG (LB)
9. WITH 4.25/65R22.5L TIRES,
10. 22.5X12.25 RIMS, @ 827 KPA
(120 PSI) COLD DUAL
11. GAWR-INTERMEDIATE (2) KG (LB)
12. WITH 11R22.5G TIRES,
13. 22.5X8.25 RIMS, @ 724 KPA
(105 PSI) COLD DUAL
14. GAWR-REAR 19958 KG (44000 LB)
15. WITH 11R22.5G TIRES,
16. 22.5X8.25 RIMS, @ 724 KPA
(105 PSI) COLD DUAL
17. MONTH 03 YEAR 2008
- * 18. VEHICLE IDENTIFICATION NUMBER:
19. VEHICLE TYPE: TRUCK

MFD. BY: REED LLC

DATE OF MFR: MO. 03 YR. 2008
GVWR: 38,102 KG (84,000 LB)

GAWR-FRONT: 18,144 KG (40,000 LB)
WITH 4.25/65R22.5L TIRES,

22.5X12.25 RIMS, @ 827 KPA
(120 PSI) COLD SINGLE

GAWR-INTERMEDIATE (1):
KG (LB)
WITH 4.25/65R22.5L TIRES,

22.5X12.25 RIMS, @ 827 KPA
(120 PSI) COLD

GAWR-INTERMEDIATE (2):
KG (LB)
WITH 11R22.5G TIRES,

22.5X8.25 RIMS, @ 724 KPA
(105 PSI) COLD

GAWR-REAR: 19,958 KG (44,000 LB)
WITH 11R22.5G TIRES,

22.5X8.25 RIMS, @ 724 KPA
(105 PSI) COLD DUAL

THIS VEHICLE HAS BEEN COMPLETED
IN ACCORDANCE WITH THE PRIOR
MANUFACTURERS' IVD, WHERE
APPLICABLE. THIS VEHICLE
CONFORMS TO ALL APPLICABLE
FEDERAL MOTOR VEHICLE SAFETY
STANDARDS, [AND BUMPER AND
THEFT PREVENTION STANDARDS, IF
APPLICABLE] IN EFFECT IN:
MO. 03 YR. 2008
VEHICLE IDENTIFICATION NUMBER:
1M2K201C06M028213
VEHICLE TYPE: TRUCK