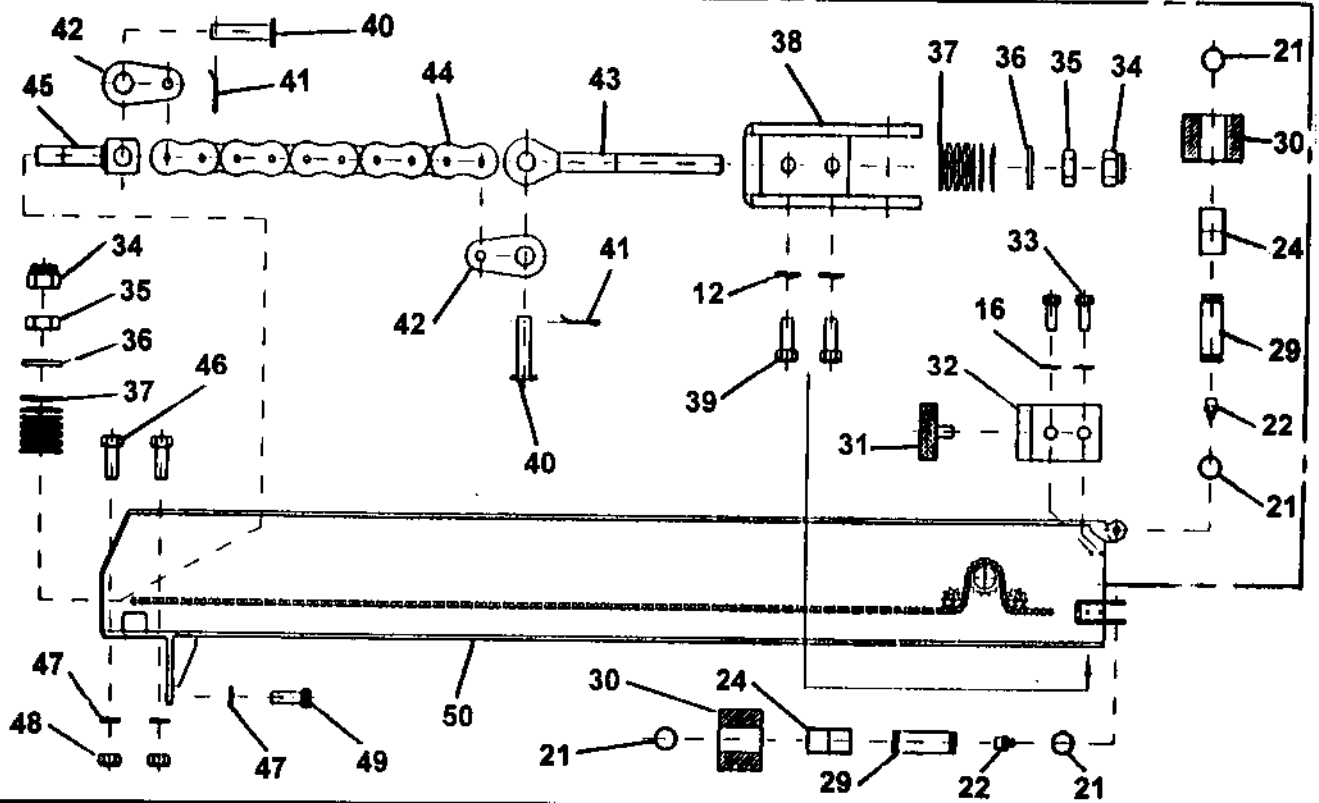
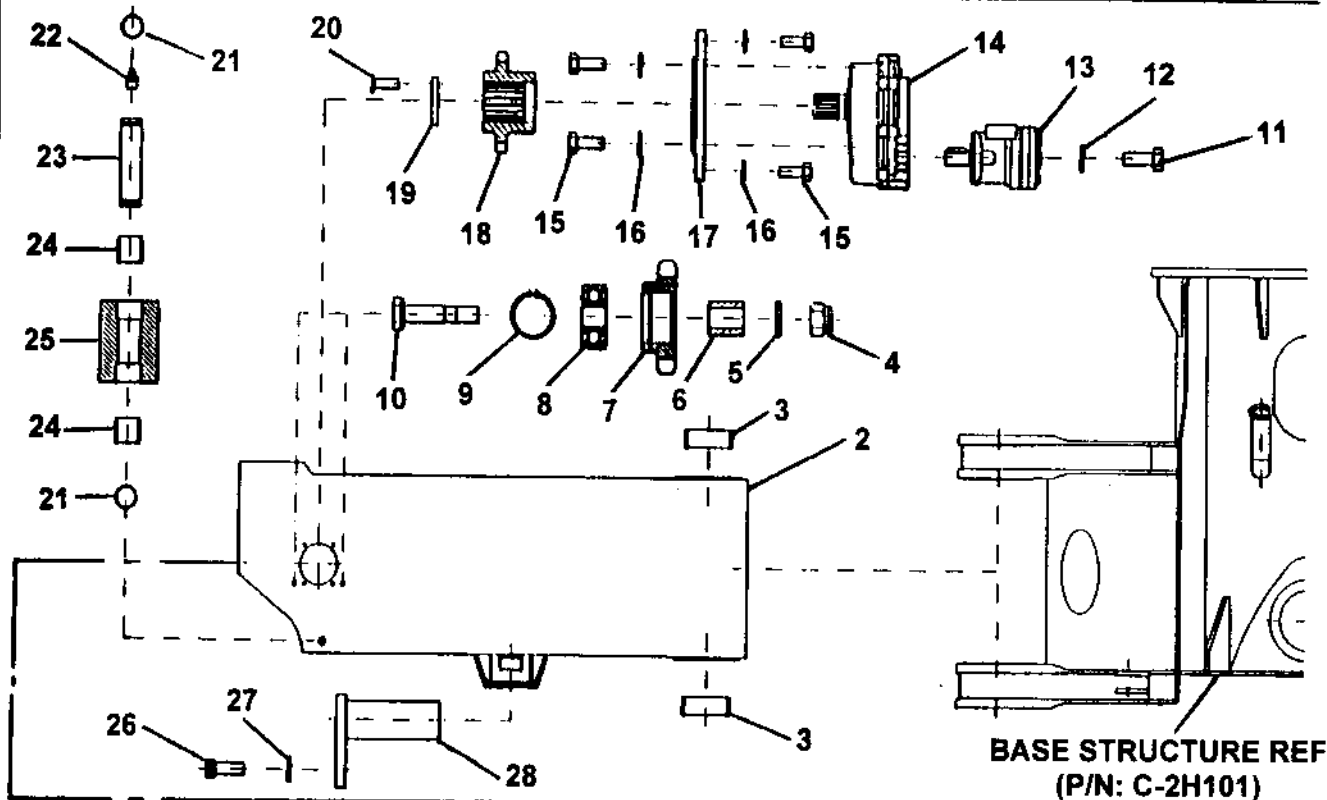
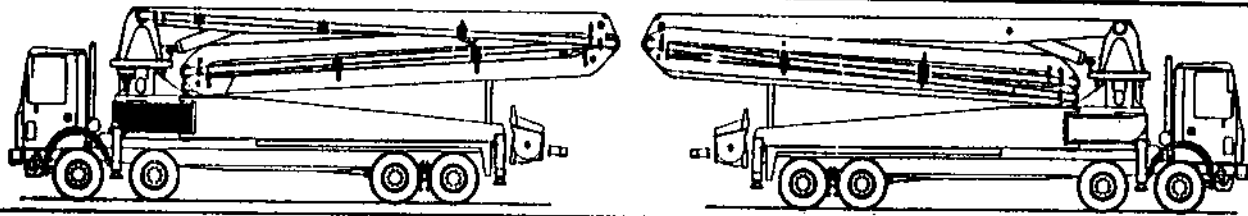


FRONT STABILIZERS LEFT SIDE TELESCOPIC LEG ASSEMBLY

XXT 42
PARTS
GROUP 70
FIGURE 06
PAGE 01



REED**FRONT STABILIZERS LEFT SIDE
TELESCOPIC LEG ASSEMBLY****XXT 42
PARTS
GROUP 70
FIGURE 06
PAGE 02**

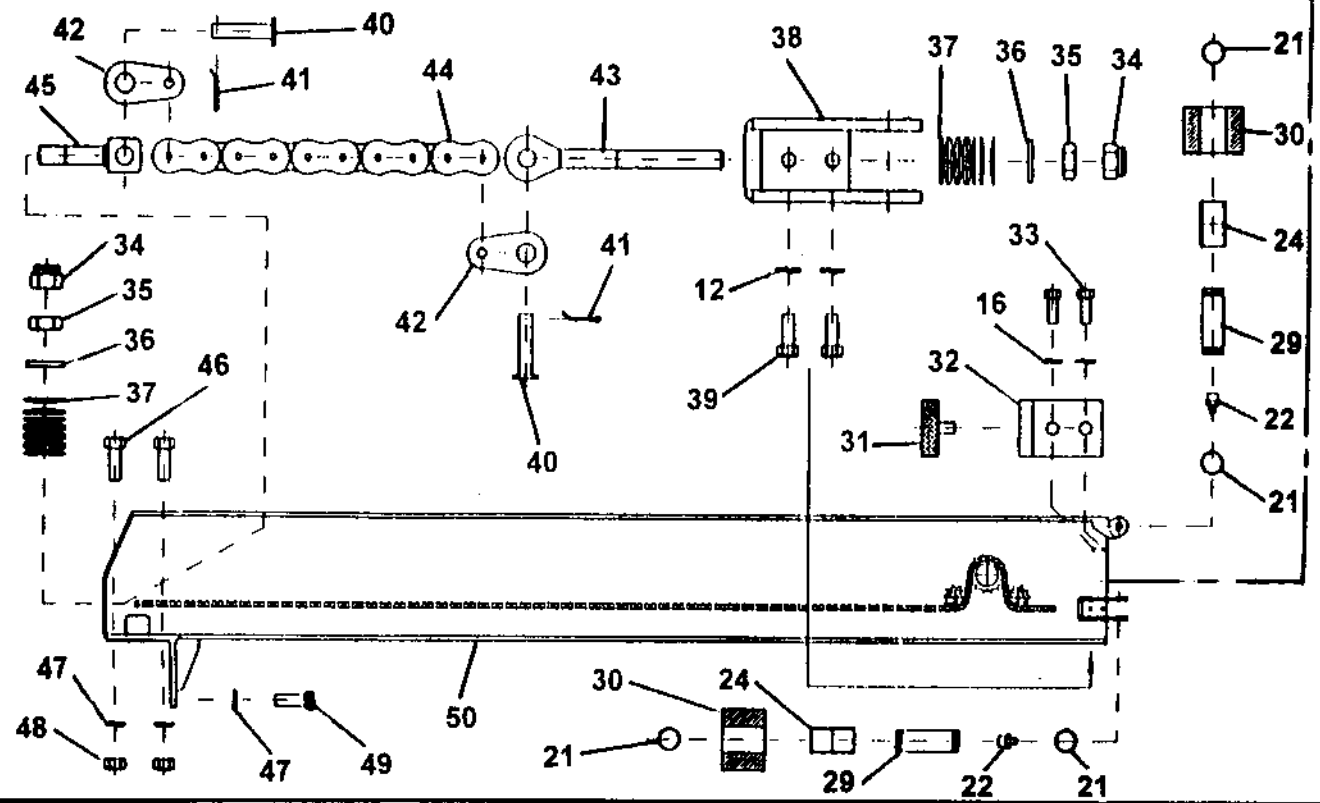
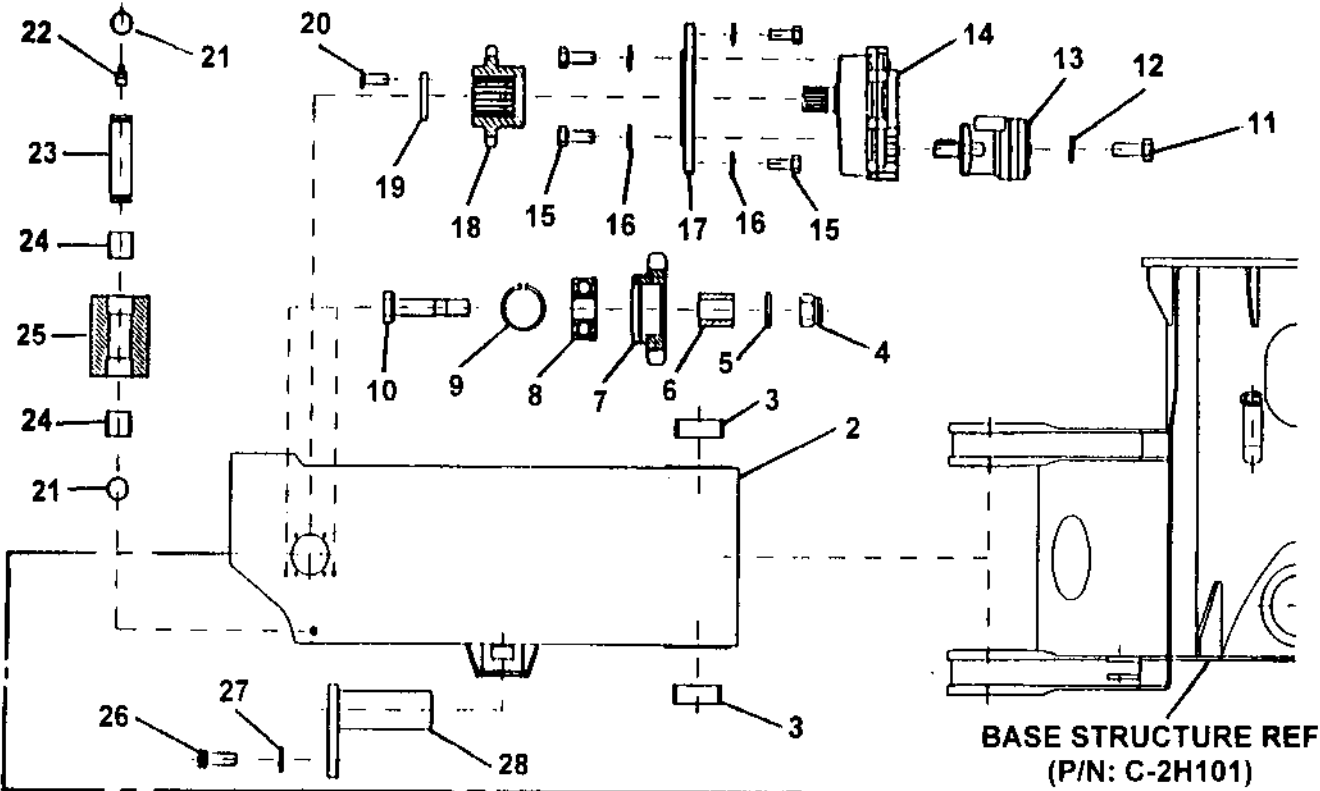
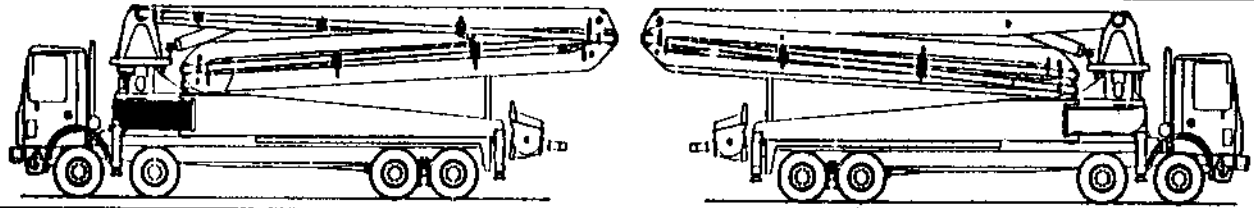
ITEM NO.	REED'S PARTS NO.	DESCRIPTION					QTY
		1	2	3	4	5	
-1	C-2K1-L	Assembly, Front Stabilizers Left Side Telescopic Leg (See Group 70, Figure 01 for NHA)					Ref
2	C-2K102	• Weldment, Front Left Side Stabilizers					1
3	C-CD00.205080	• Bearing, Anti-friction					2
4	C-VD221.1420	• Nut, Self Locking					2
5	C-UP110.14	• Washer					2
6	C-9K111A	• Piece, Distance					2
7	C-9K115	• Pinion, Free					2
8	C-CC63002.2RS	• Bearing, Ball					2
9	C-AA120.032	• Ring, Clamping					2
10	C-9K110A	• Pin					2
11	C-VE110.121725	• Screw					2
12	C-UE110.12	• Washer, Elastic					4
13	C-MI300.250	• Assembly, Hydraulic Motor					1
14	C-RE003.00075	• Reducer					1
15	C-VE110.101535	• Screw					4
16	C-UE110.10	• Washer, Elastic					10
17	C-9K113	• Flange, Reducer					1
18	C-9K116	• Pinion					1
19	C-9K112	• Washer					1
20	C-VT110.061025	• Screw					3
21	C-AA110.025	• Ring, Clamping					6
22	C-VI131.0608	• Nipple, Grease					3
23	C-3P206	• Pin					1
24	C-CD025.02825	• Bearing, Anti-friction					6
25	C-5H105	• Roller					1
26	C-VE110.081220	• Screw					1
27	C-UE110.08	• Washer, Elastic					1
28	C-9P206	• Pin					1

DASH (-) ITEM NOT ILLUSTRATED



FRONT STABILIZERS LEFT SIDE TELESCOPIC LEG ASSEMBLY

XXT 42
PARTS
GROUP 70
FIGURE 06
PAGE 03



REVISION:

REED**FRONT STABILIZERS LEFT SIDE
TELESCOPIC LEG ASSEMBLY****XXT 42
PARTS
GROUP 70
FIGURE 06
PAGE 04**

ITEM NO.	REED'S PARTS NO.	DESCRIPTION	QTY
12	C-UE110.12	• Washer, Elastic	4
13	C-MI300.250	• Assembly, Hydraulic Motor	1
14	C-RE003.00075	• Reducer	1
15	C-VE110.101535	• Screw	4
16	C-UE110.10	• Washer, Elastic	10
17	C-9K113	• Flange, Reducer	1
18	C-9K116	• Pinion	1
19	C-9K112	• Washer	1
20	C-VT110.061025	• Screw	3
21	C-AA110.025	• Ring, Clamping	6
22	C-VI131.0608	• Nipple, Grease	3
23	C-3P206	• Pin	1
24	C-CD025.02825	• Bearing, Anti-friction	6
25	C-5H105	• Roller	1
26	C-VE110.081220	• Screw	1
27	C-UE110.08	• Washer, Elastic	1
28	C-9P206	• Pin	1
29	C-4P201	• Pin	2
30	C-4H102	• Roller	2
31	C-UG220.05010	• Pad, Rubber	1
32	C-9K114	• Support	1
33	C-VE110.101525	• Screw	2
34	C-VD221.1620	• Nut, Self Locking	2
35	C-VD112.1620	• Nut	2
36	C-UP110.06	• Washer	2
37	C-LT016	• Spring, Bauer	20
38	C-2K103	• Supporter, Roller and Chain	1
39	C-VE110.121730	• Screw	2
40	C-AC616	• Pin, Chain	2
41	C-VS110.04030	• Pin, Split	2
42	C-9K119	• Connection, Chain	2
43	C-9K107A	• Rod, Chain Tie	1
44	C-AC516.80	• Block, Chain	1
45	C-9K118	• Rod, Chain Tie	1
46	C-VE110.222580	• Screw	4
47	C-UE110.22	• Washer, Elastic	6
48	C-VD111.2225	• Nut	4
49	C-2K202	• Weldment, Front Left Side Telescopic Leg	1

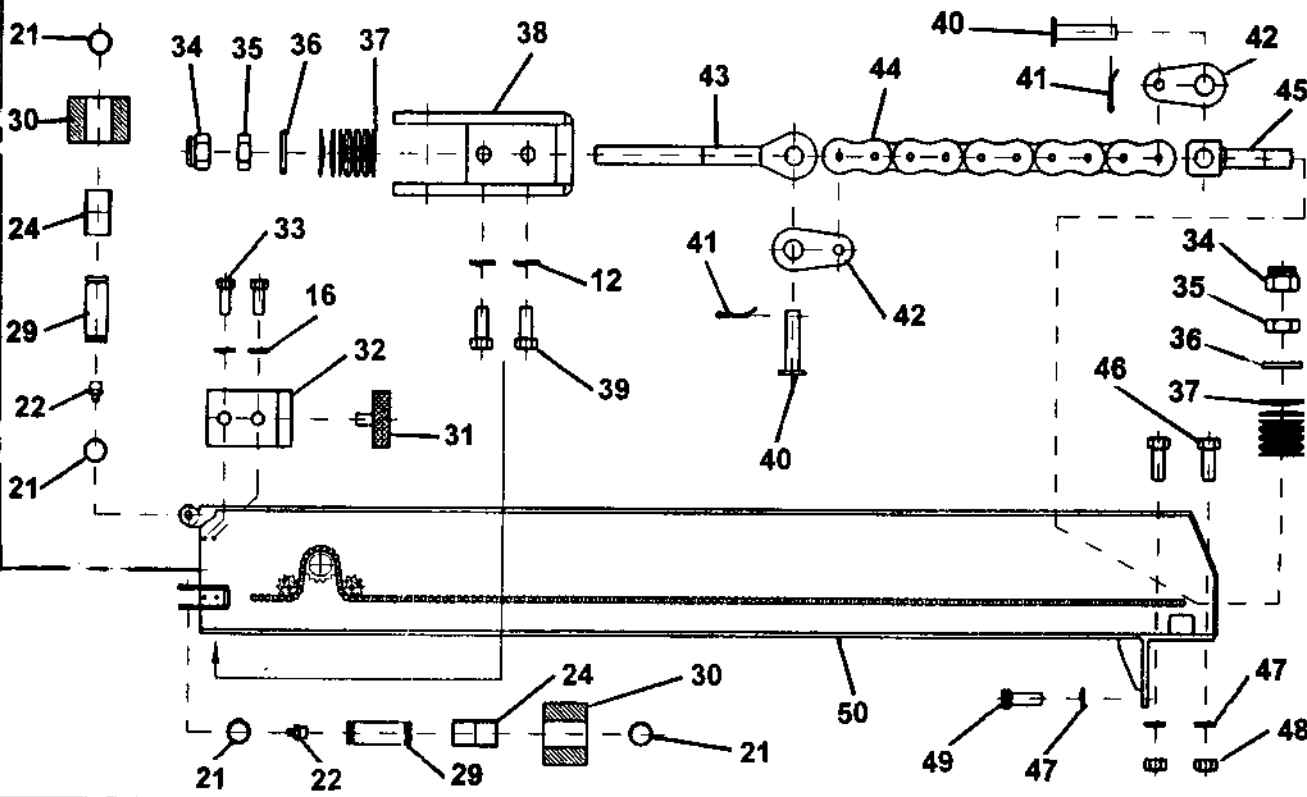
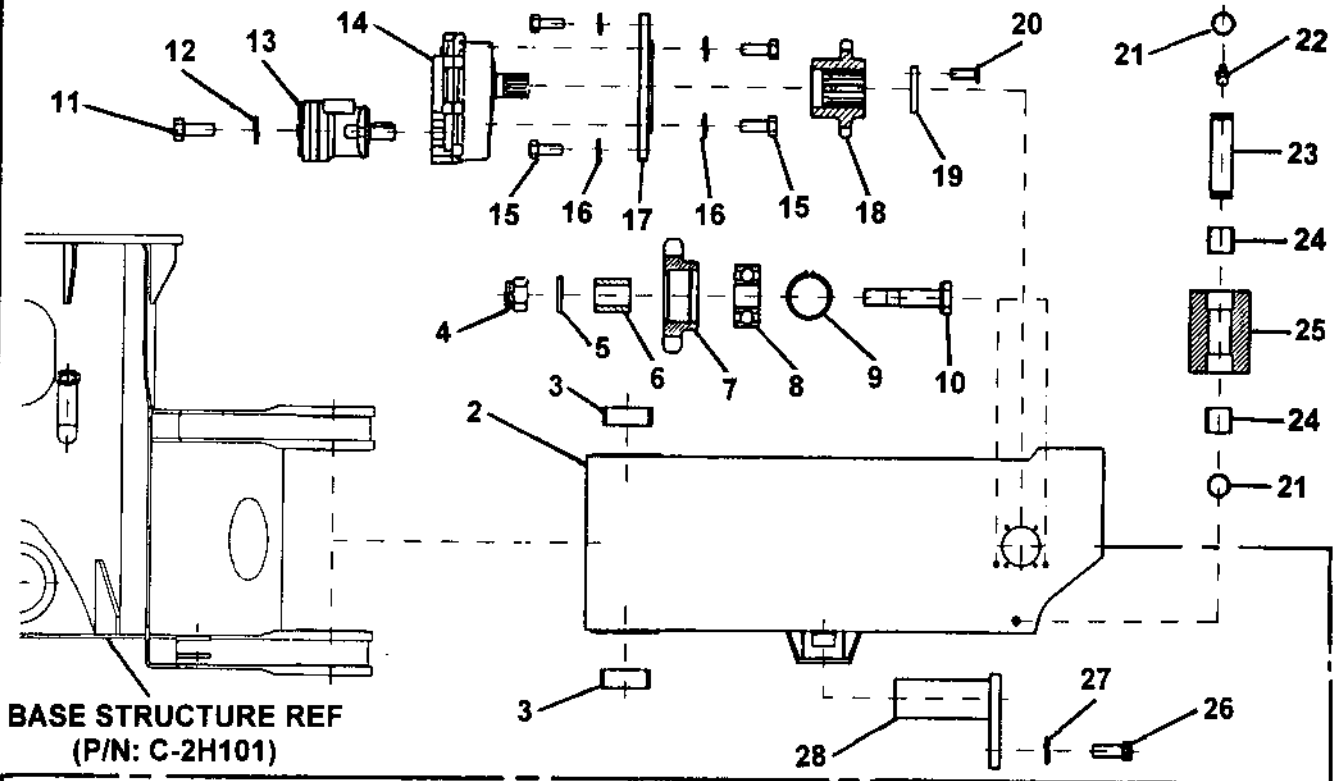
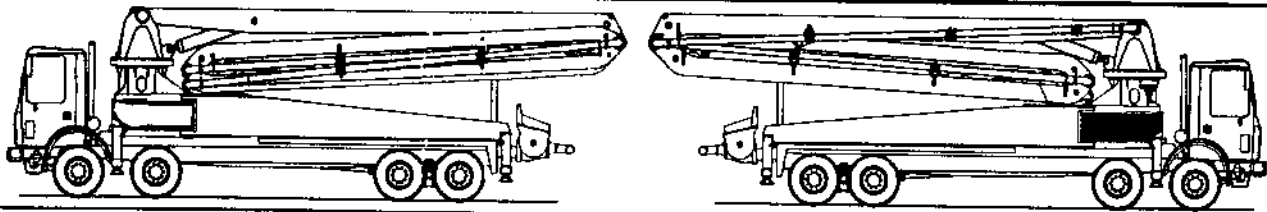
DASH (-) ITEM NOT ILLUSTRATED

REVISION:

REED

FRONT STABILIZERS RIGHT SIDE TELESCOPIC LEG ASSEMBLY

XXT 42
PARTS
GROUP 70
FIGURE 07
PAGE 01



REVISION:

REED**FRONT STABILIZERS RIGHT SIDE
TELESCOPIC LEG ASSEMBLY****XXT 42****PARTS**

GROUP 70

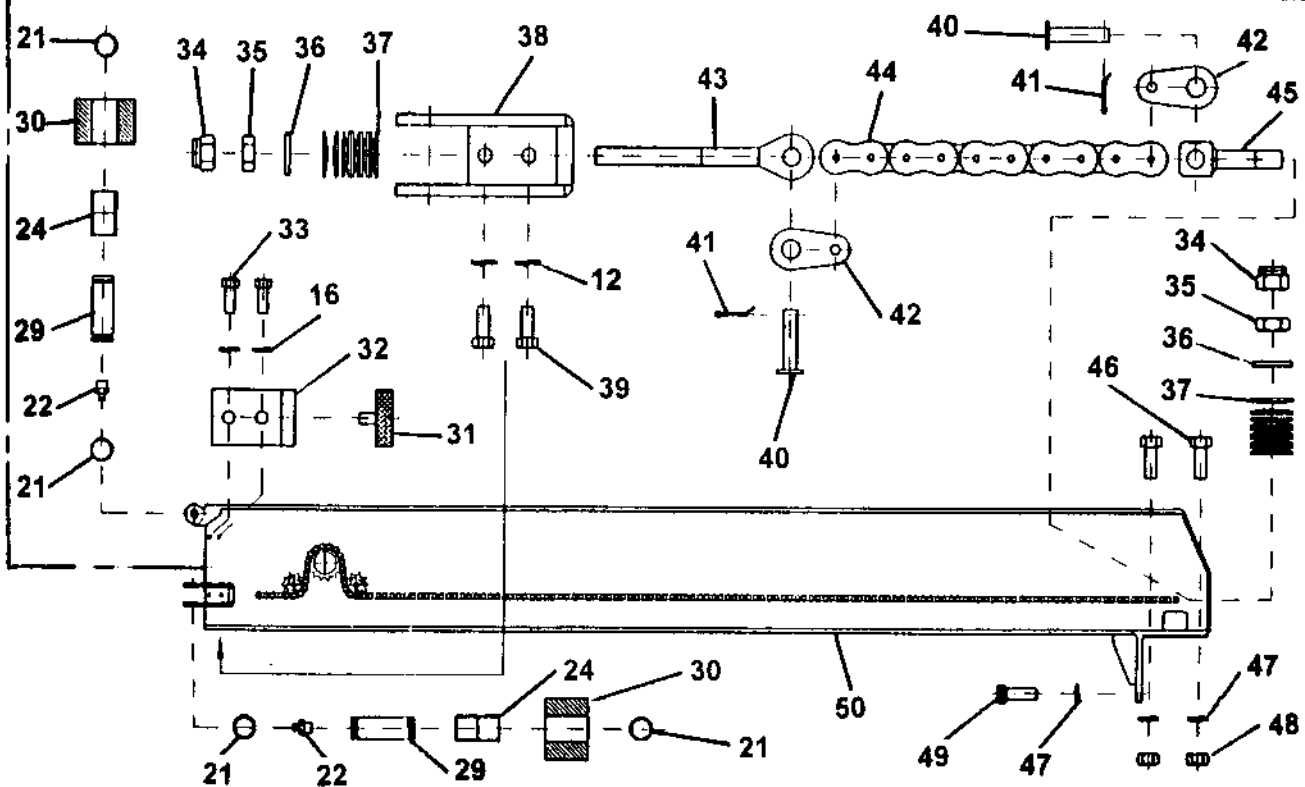
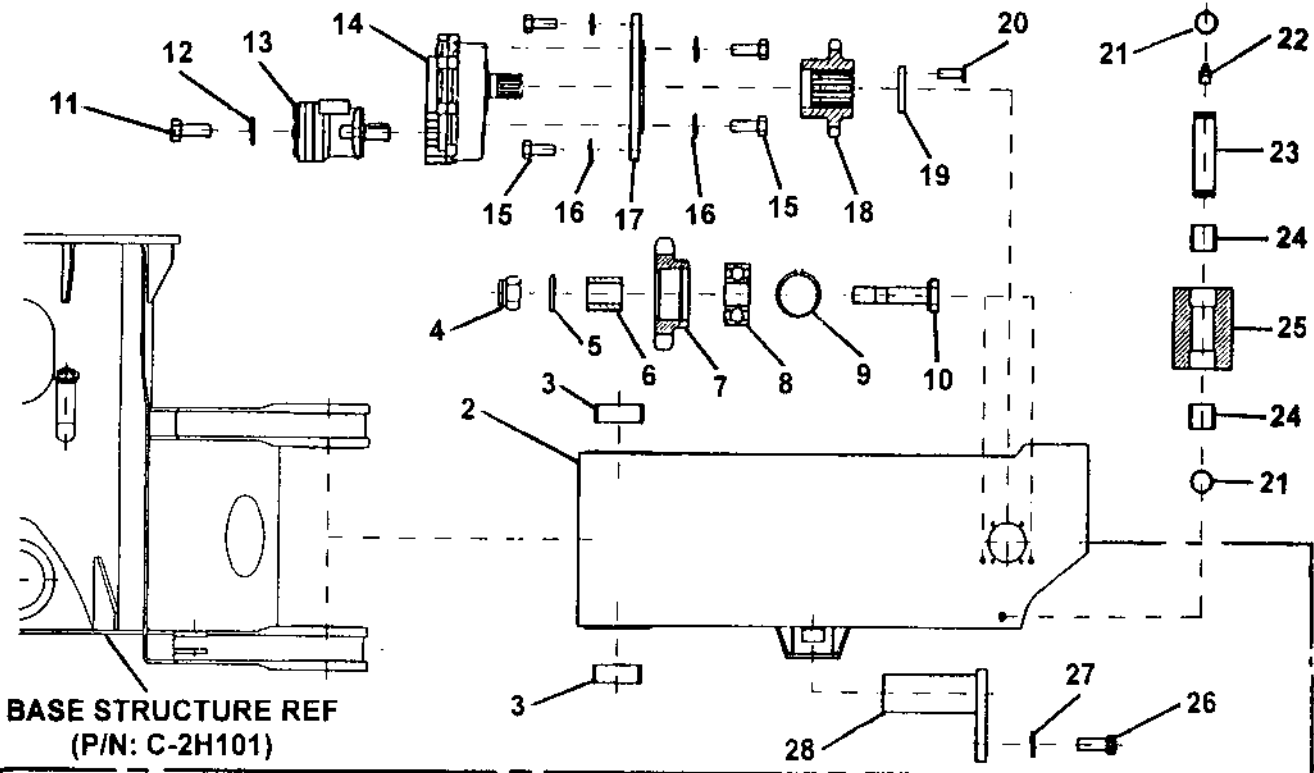
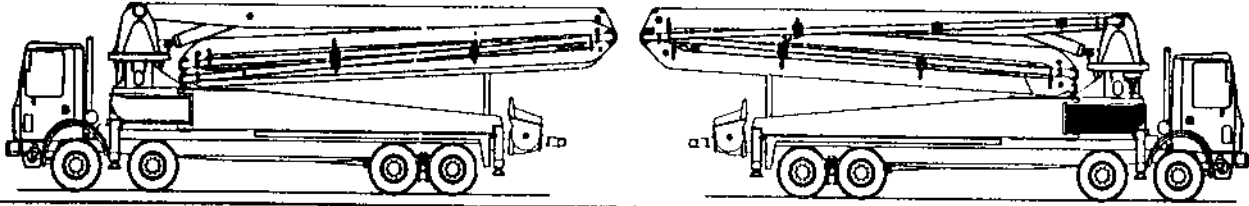
FIGURE 07

PAGE 02

ITEM NO.	REED'S PARTS NO.	DESCRIPTION					QTY
		1	2	3	4	5	
-1	C-2K1-R	Assembly, Front Stabilizers Right Side Telescopic Leg (See Group 70, Figure 01 for NHA)					Ref
2	C-2K101	• Weldment, Front Right Side Stabilizers					1
3	C-CD200.205080	• Bearing, Anti-friction					2
4	C-VD221.1420	• Nut, Self Locking					2
5	C-UP110.14	• Washer					2
6	C-9K111A	• Piece, Distance					2
7	C-9K115	• Pinion, Free					2
8	C-CC63002.2RS	• Bearing, Ball					2
9	C-AA120.032	• Ring, Clamping					2
10	C-9K110A	• Pin					2
11	C-VE110.121725	• Screw					2
12	C-UE110.12	• Washer, Elastic					4
13	C-MI300.250	• Assembly, Hydraulic Motor					1
14	C-RE003.00075	• Reducer					1
15	C-VE110.101535	• Screw					4
16	C-UE110.10	• Washer, Elastic					10
17	C-9K113	• Flange, Reducer					1
18	C-9K116	• Pinion					1
19	C-9K112	• Washer					1
20	C-VT110.061025	• Screw					3
21	C-AA110.025	• Ring, Clamping					6
22	C-VI131.0608	• Nipple, Grease					3
23	C-3P206	• Pin					1
24	C-CD025.02825	• Bearing, Anti-friction					6
25	C-5H105	• Roller					1
26	C-VE110.081220	• Screw					1
27	C-UE110.08	• Washer, Elastic					1
28	C-9P206	• Pin					1

DASH (-) ITEM NOT ILLUSTRATED

FRONT STABILIZERS RIGHT SIDE TELESCOPIC LEG ASSEMBLY

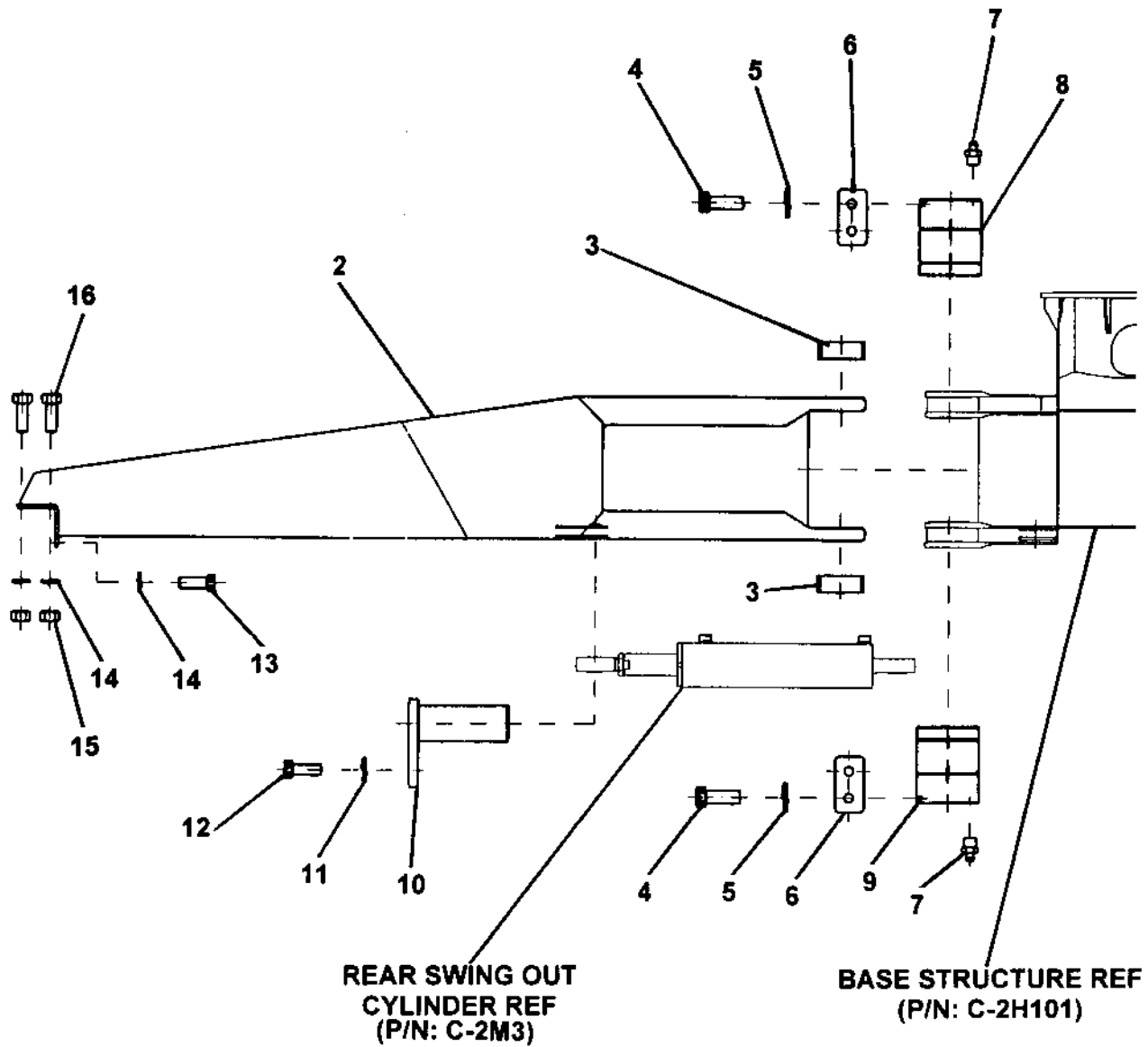
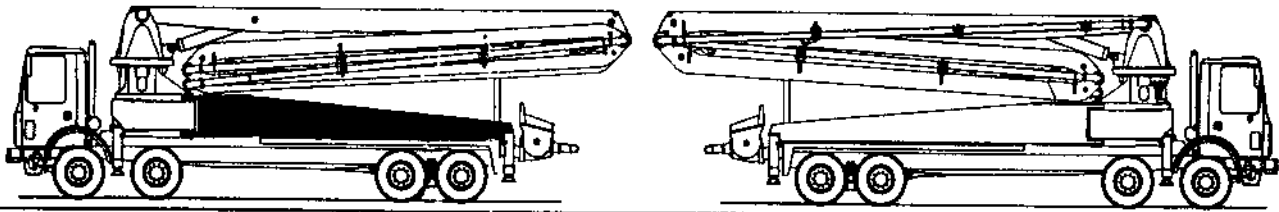


REED**FRONT STABILIZERS RIGHT SIDE
TELESCOPIC LEG ASSEMBLY****XXT 42
PARTS
GROUP 70
FIGURE 07
PAGE 04**

ITEM NO.	REED'S PARTS NO.	DESCRIPTION					QTY
		1	2	3	4	5	
12	C-UE110.12	• Washer, Elastic					4
13	C-MI300.250	• Assembly, Hydraulic Motor					1
14	C-RE003.00075	• Reducer					1
15	C-VE110.101535	• Screw					4
16	C-UE110.10	• Washer, Elastic					10
17	C-9K113	• Flange, Reducer					1
18	C-9K116	• Pinion					1
19	C-9K112	• Washer					1
20	C-VT110.061025	• Screw					3
21	C-AA110.025	• Ring, Clamping					6
22	C-VI131.0608	• Nipple, Grease					3
23	C-3P206	• Pin					1
24	C-CD025.02825	• Bearing, Anti-friction					6
25	C-5H105	• Roller					1
26	C-VE110.081220	• Screw					1
27	C-UE110.08	• Washer, Elastic					1
28	C-9P206	• Pin					1
29	C-4P201	• Pin					2
30	C-4H102	• Roller					2
31	C-UG220.05010	• Pad, Rubber					1
32	C-9K114	• Support					1
33	C-VE110.101525	• Screw					2
34	C-VD221.1620	• Nut, Self Locking					2
35	C-VD112.1620	• Nut					2
36	C-UP110.06	• Washer					2
37	C-LT016	• Spring, Bauer					20
38	C-2K103	• Supporter, Roller and Chain					1
39	C-VE110.121730	• Screw					2
40	C-AC616	• Pin, Chain					2
41	C-VS110.04030	• Pin, Split					2
42	C-9K119	• Connection, Chain					2
43	C-9K107A	• Rod, Chain Tie					1
44	C-AC516.80	• Block, Chain					1
45	C-9K118	• Rod, Chain Tie					1
46	C-VE110.222580	• Screw					4
47	C-UE110.22	• Washer, Elastic					6
48	C-VD111.2225	• Nut					4
49	C-9K201	• Weldment, Front Right Side Telescopic Leg					1

DASH (-) ITEM NOT ILLUSTRATED

REAR LEFT SIDE SWING OUT LEG ASSEMBLY

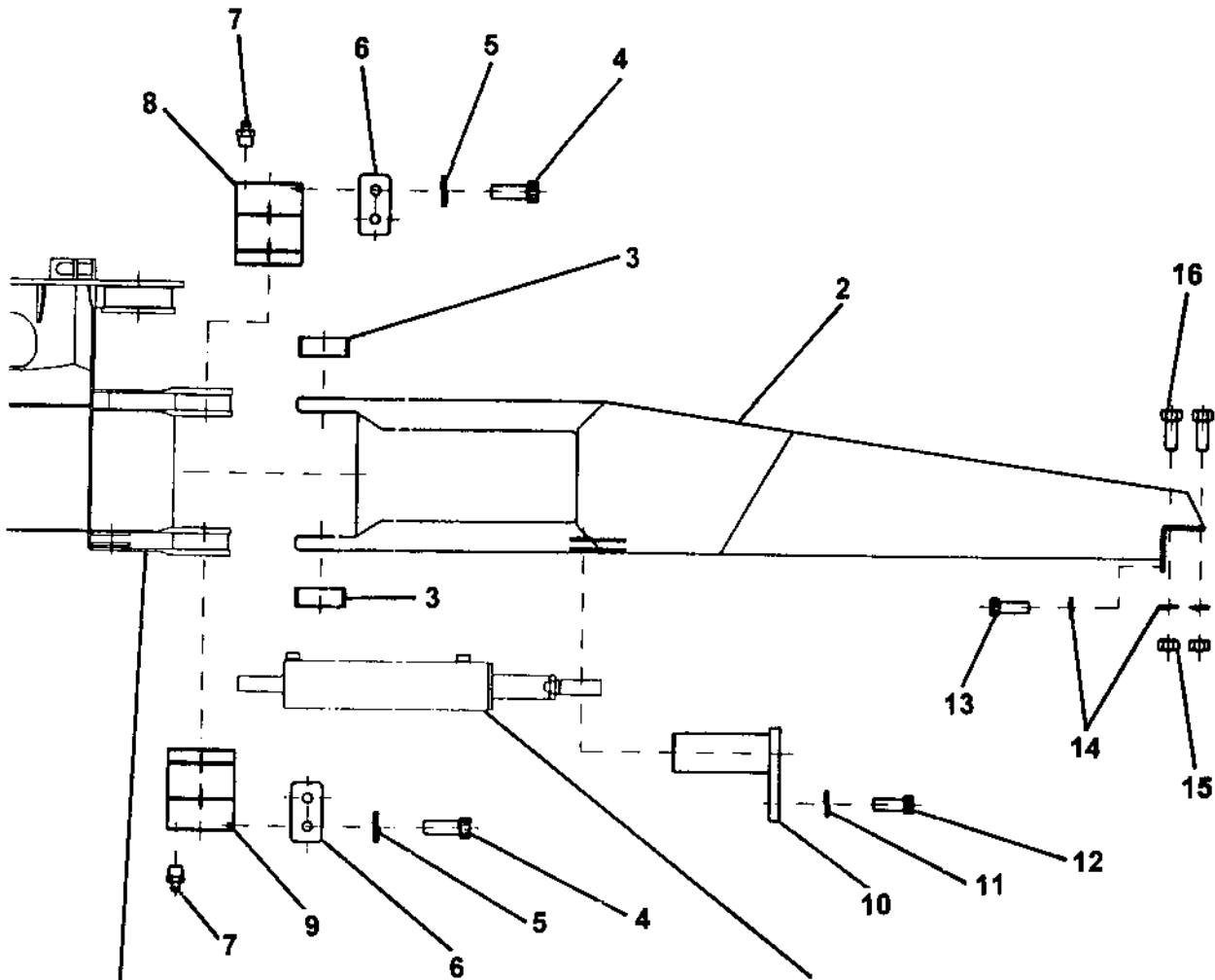
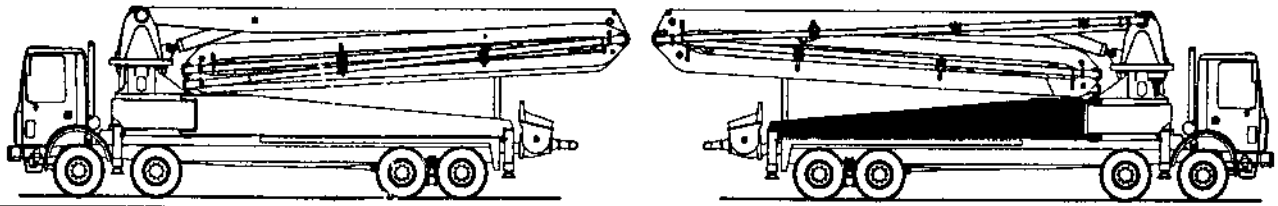


ITEM NO.	REED'S PARTS NO.	DESCRIPTION					QTY
		1	2	3	4	5	
-1	C-2M1-L	Assembly, Rear Left Side Swing Out Leg (See Group 70, Figure 01 for NHA)					Ref
2	C-2M102	• Stabilizer, Rear Left Side					1
3	C-CD200.201080	• Bearing, Anti Friction					2
4	C-VC110.121730	• Screw					4
5	C-UE110.12	• Washer, Elastic					4
6	C-9H107	• Plate, Embed					2
7	C-VI131.1010	• Nipple, Grease					4
8	C-2P203	• Pin, Left Side Top					1
9	C-2P205	• Pin, Left Side Bottom					1
10	C-2P201	• Pin					1
11	C-UE110.08	• Washer, Elastic					1
12	C-VE110.081220	• Screw					1
13	C-VC110.222550	• Screw					2
14	C-UE110.22	• Washer, Elastic					6
15	C-VD111.2225	• Nut					4
16	C-VE110.222580	• Screw					4

DASH (-) ITEM NOT ILLUSTRATED

REAR RIGHT SIDE SWING OUT LEG ASSEMBLY

XXT 42
PARTS
GROUP 70
FIGURE 09
PAGE 01



BASE STRUCTURE REF
(P/N: C-2H101)

**REAR SWING OUT
CYLINDER REF**
(P/N: C-2M3)



**REAR RIGHT SIDE
SWING OUT LEG ASSEMBLY**

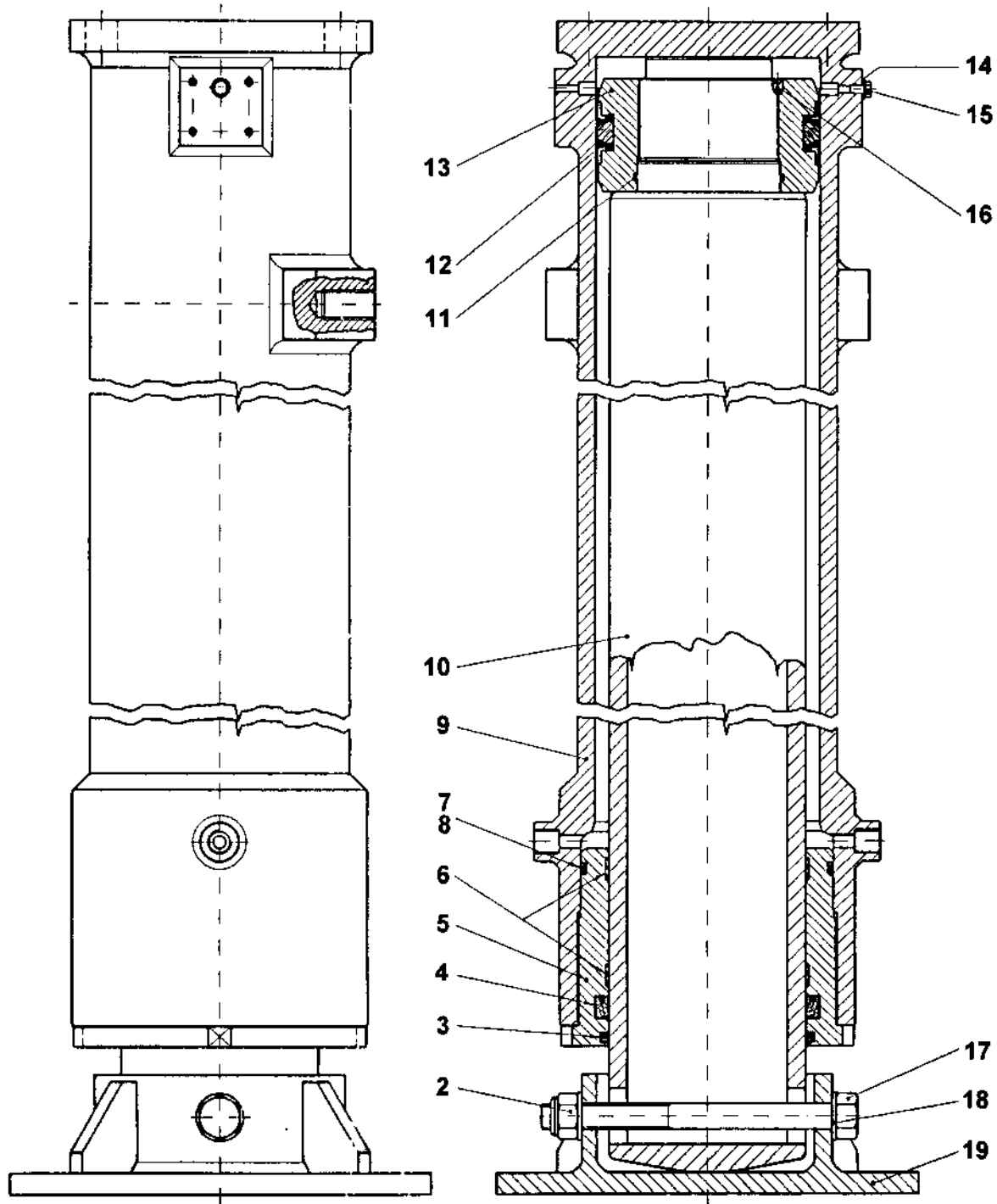
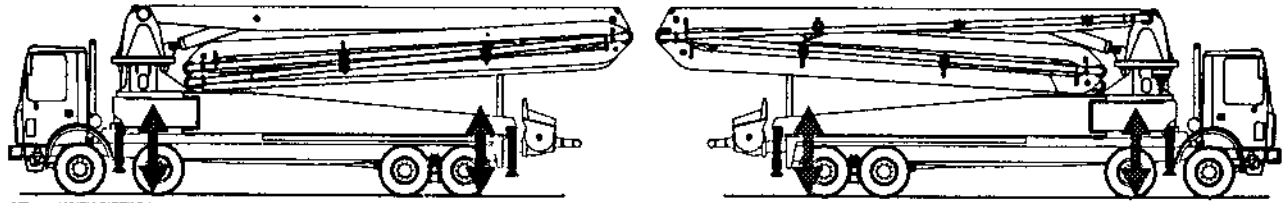
**XXT 42
PARTS
GROUP 70
FIGURE 09
PAGE 02**

ITEM NO.	REED'S PARTS NO.	DESCRIPTION					QTY
		1	2	3	4	5	
-1	C-2M1-R	Assembly, Rear Right Side Swing Out Leg (See Group 70, Figure 01 for NHA)					Ref
2	C-2M101	• Stabilizer, Rear Right Side					1
3	C-CD200.201080	• Bearing, Anti Friction					2
4	C-VC110.121730	• Screw					4
5	C-UE110.12	• Washer, Elastic					4
6	C-9H107	• Plate, Embed					2
7	C-VI131.1010	• Nipple, Grease					4
8	C-2P204	• Pin, Right Side Top					1
9	C-2P206	• Pin, Right Side Bottom					1
10	C-2P201	• Pin					1
11	C-UE110.08	• Washer, Elastic					1
12	C-VE110.081220	• Screw					1
13	C-VC110.222550	• Screw					2
14	C-UE110.22	• Washer, Elastic					6
15	C-VD111.2225	• Nut					4
16	C-VE110.222580	• Screw					4

DASH (-) ITEM NOT ILLUSTRATED

STABILIZER VERTICAL JACK CYLINDER ASSEMBLY

XXT 42
PARTS
GROUP 70
FIGURE 10
PAGE 01

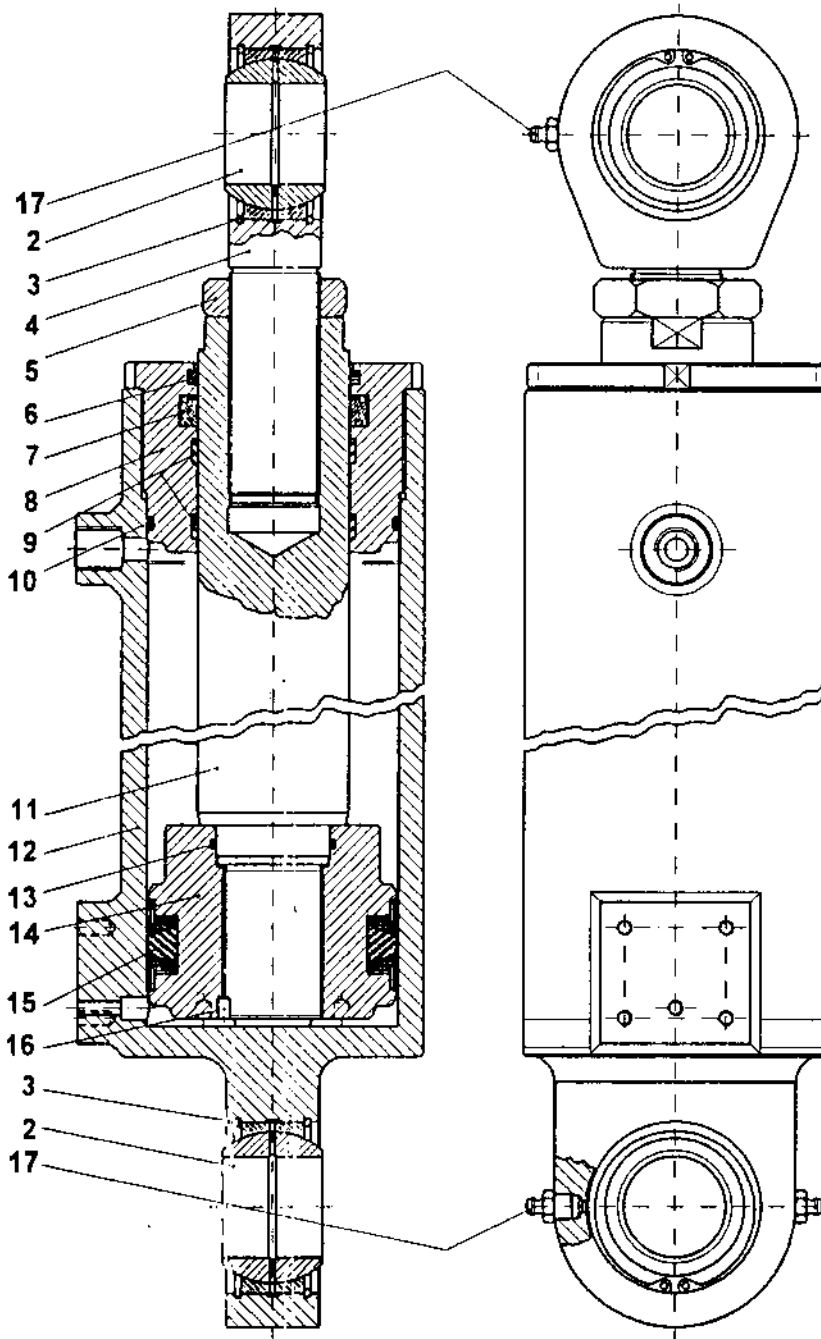
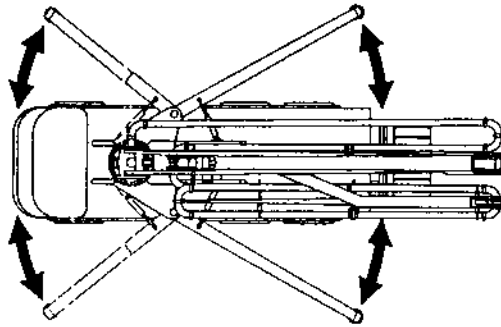


ITEM NO.	REED'S PARTS NO.	DESCRIPTION					QTY
		1	2	3	4	5	
-1	C-2L5	Assembly, Stabilizers Jack Cylinder (See Group 70, Figure 01 for NHA)					Ref
2	C-VD221.1825	• Nut, Self Locking					1
3	C-BR310.140	• Gasket, Seal					1
4	C-BT110.140	• Gasket, Seal					1
5	C-3K501	• Head, Slide Rod					1
6	C-AG123.140	• Ring, Slide Rod					2
7	C-AO120.364	• Gasket, Seal					1
8	C-AP110.364	• Gasket, Seal					1
9	C-2L502	• Cylinder					1
10	C-2L507	• Rod					1
11	C-AO120.242	• Gasket, Seal					1
12	C-BS23629531	• Gasket, Seal					1
13	C-2L512	• Piston					1
14	C-AB110.006	• Ring, Bonded					1
15	C-DT110.16	• Plug, Screw					1
16	C-VG122.081010	• Screw					1
17	C-VE110.1825C8	• Screw, Foot					1
18	C-UP110.18	• Washer, Elastic					2
19	C-2L519	• Foot					1

DASH (-) ITEM NOT ILLUSTRATED

SWING OUT CYLINDER ASSEMBLY

XXT 42
PARTS
GROUP 70
FIGURE 11
PAGE 01



ITEM NO.	REED'S PARTS NO.	1 2 3 4 5	DESCRIPTION	QTY
-1	C-2M3		Assembly, Rear Swing Out Cylinder (See Group 70, Figure 01 for NHA)	Ref
2	C-CT213.040		• Joint, Ball	2
3	C-AA120.068		• Ring, Clamping	4
4	C-2M308		• Cap, Rod	1
5	C-2M325		• Nut	1
6	C-BR210.236267		• Gasket, Seal	1
7	C-BT110.060		• Gasket, Seal	1
8	C-2M312		• Head, Slide Rod	1
9	C-AG122.060		• Ring, Slide Rod	2
10	C-AO420.4362		• Ring, Sealing	1
11	C-2M307		• Rod	1
12	C-2M302		• Cylinder	1
13	C-AO420.3175		• Ring, Sealing	1
14	C-BS23393295		• Gasket, Seal	1
15	C-2M312		• Piston	1
16	C-VG122.061008		• Screw	1
17	C-VI131.1010		• Nipple, Grease	3

DASH (-) ITEM NOT ILLUSTRATED

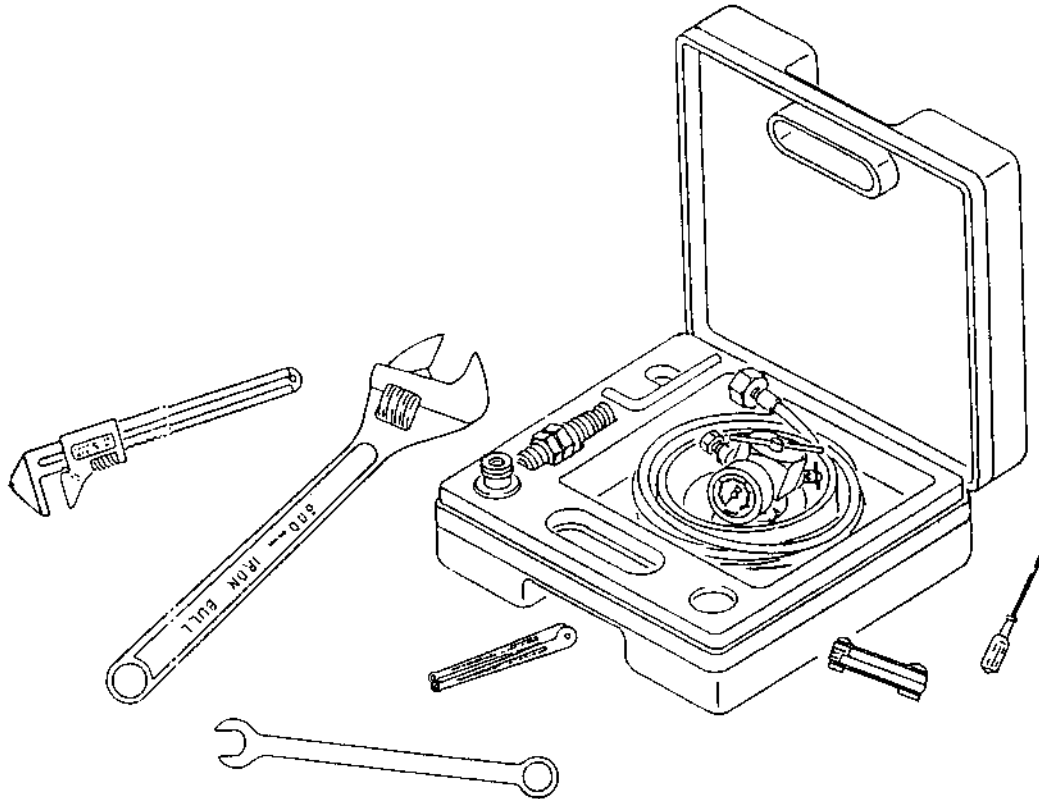


MODEL *XXT 42* TRUCK MOUNTED
CONCRETE BOOM PUMP
ILLUSTRATED PARTS MANUAL

XXT 42
PARTS
GROUP 70
FIGURE 12
PAGE 01

THIS PAGE INTENTIONALLY LEFT BLANK.





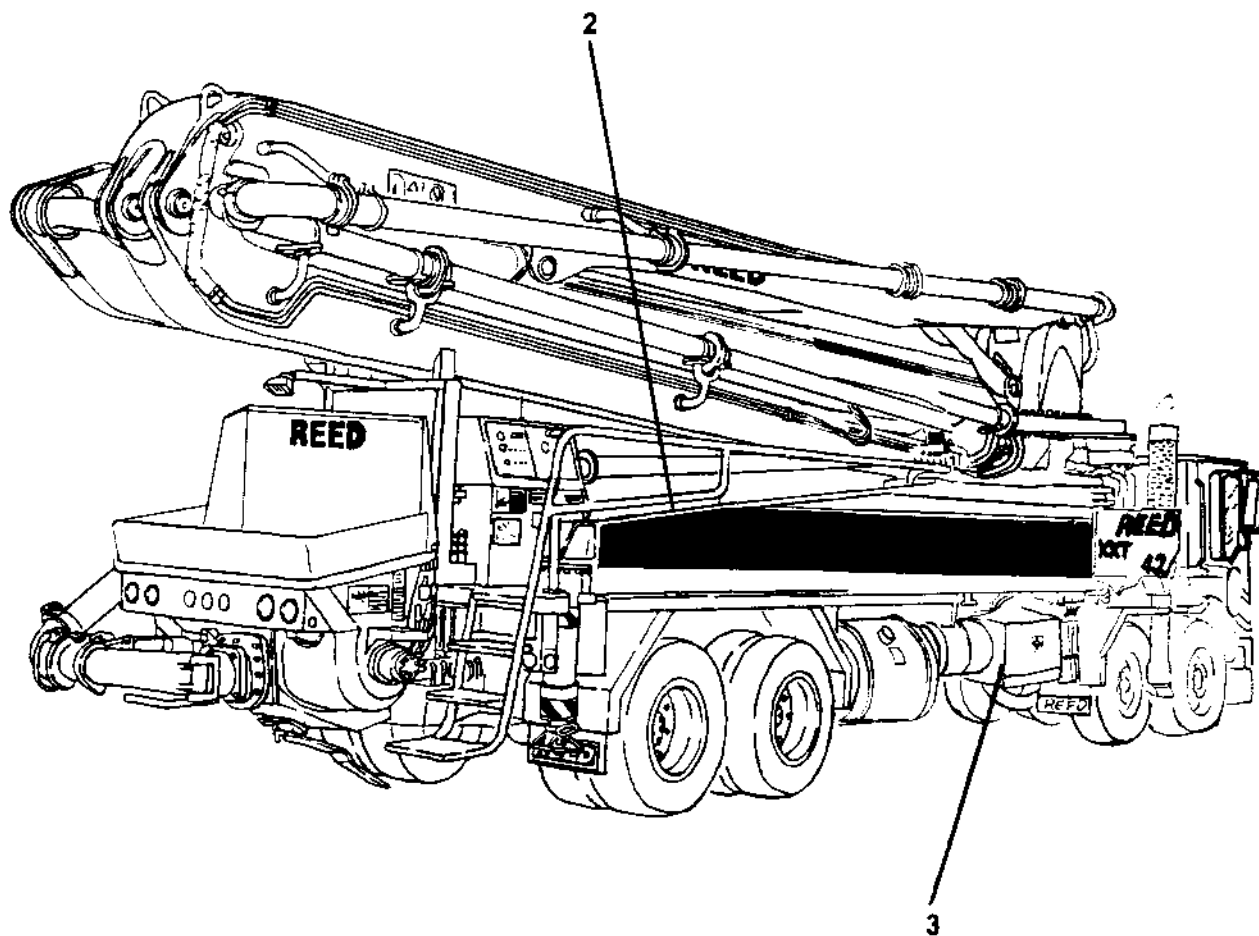
REED TRUCK MOUNTED CONCRETE BOOM PUMP MODEL XXT 42 ILLUSTRATED PARTS MANUAL GROUP 80 OPTIONAL INSTALLATION CONTAINS THE FOLLOWING FIGURES:

- FIGURE 00** TABLE OF CONTENTS
- FIGURE 01** OPTIONAL INSTALLATION
- FIGURE 02** ACCUMULATOR CHARGE KIT
- FIGURE 03** OPTIONAL TOOL KIT ASSEMBLY

REED

OPTIONAL INSTALLATION

XXT 42
PARTS
GROUP 80
FIGURE 01
PAGE 01





OPTIONAL INSTALLATION

XXT 42
PARTS
GROUP 80
FIGURE 01
PAGE 02

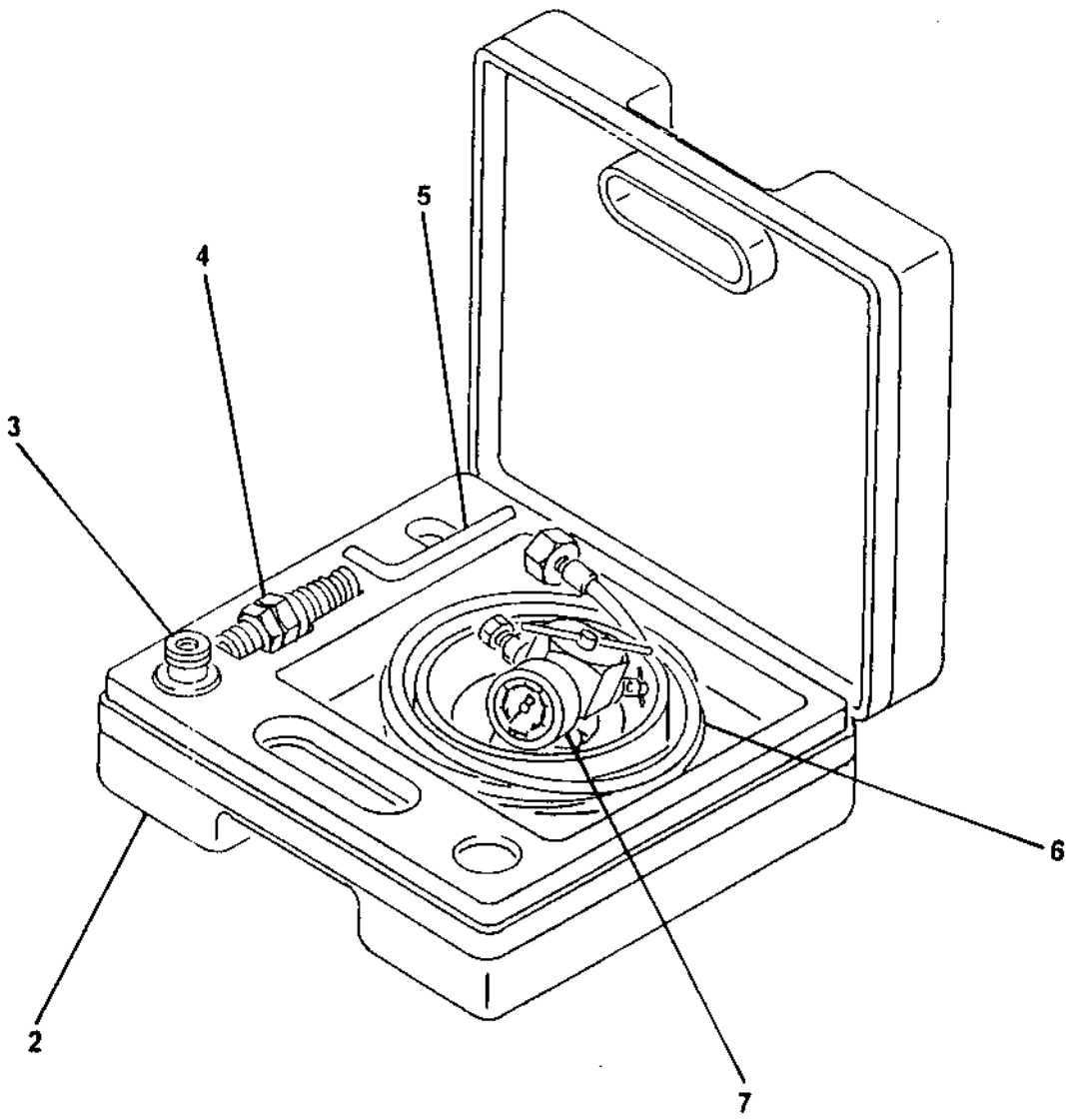
ITEM NO.	REED'S PARTS NO.	1 2 3 4 5	DESCRIPTION	QTY
-1	80-01		Installation, Optional (See Group 10, Figure 01 for NHA)	Ref
2	71460		• Kit, Accumulator Charge (See Group 80, Figure 04 for DET)	1
3	79020		• Assembly, Optional Tool Kit (See Group 80, Figure 06 for DET)	1

DASH (-) ITEM NOT ILLUSTRATED

REED

ACCUMULATOR CHARGE KIT

XXT 42
PARTS
GROUP 80
FIGURE 02
PAGE 01



REED**ACCUMULATOR CHARGE KIT****XXT 42**
PARTS
GROUP 80
FIGURE 02
PAGE 02

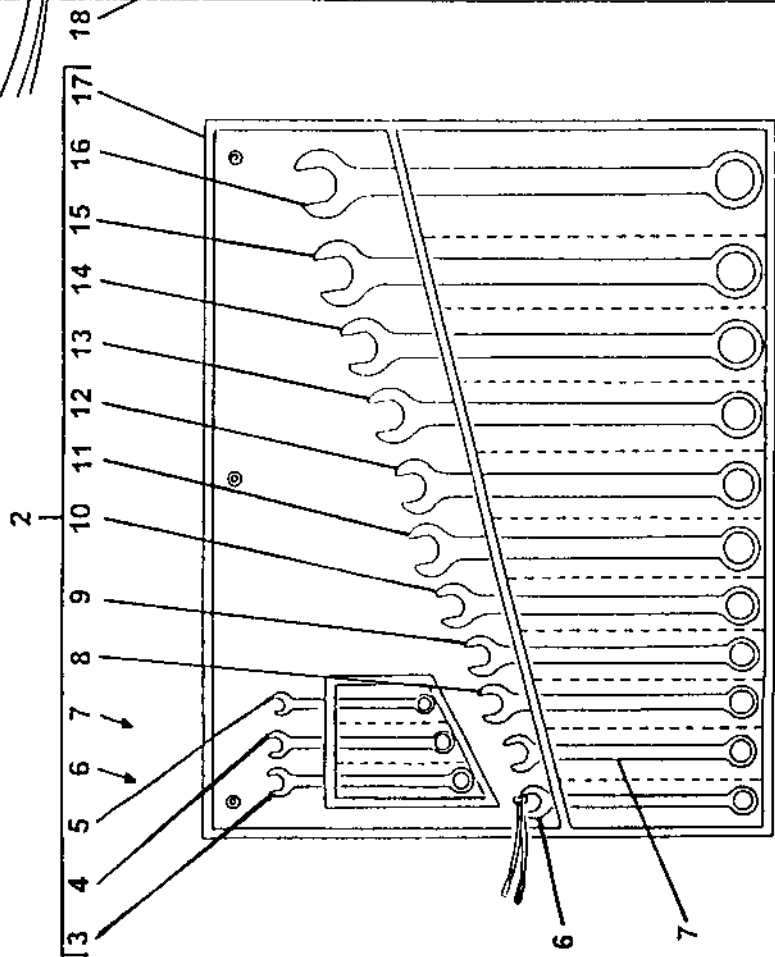
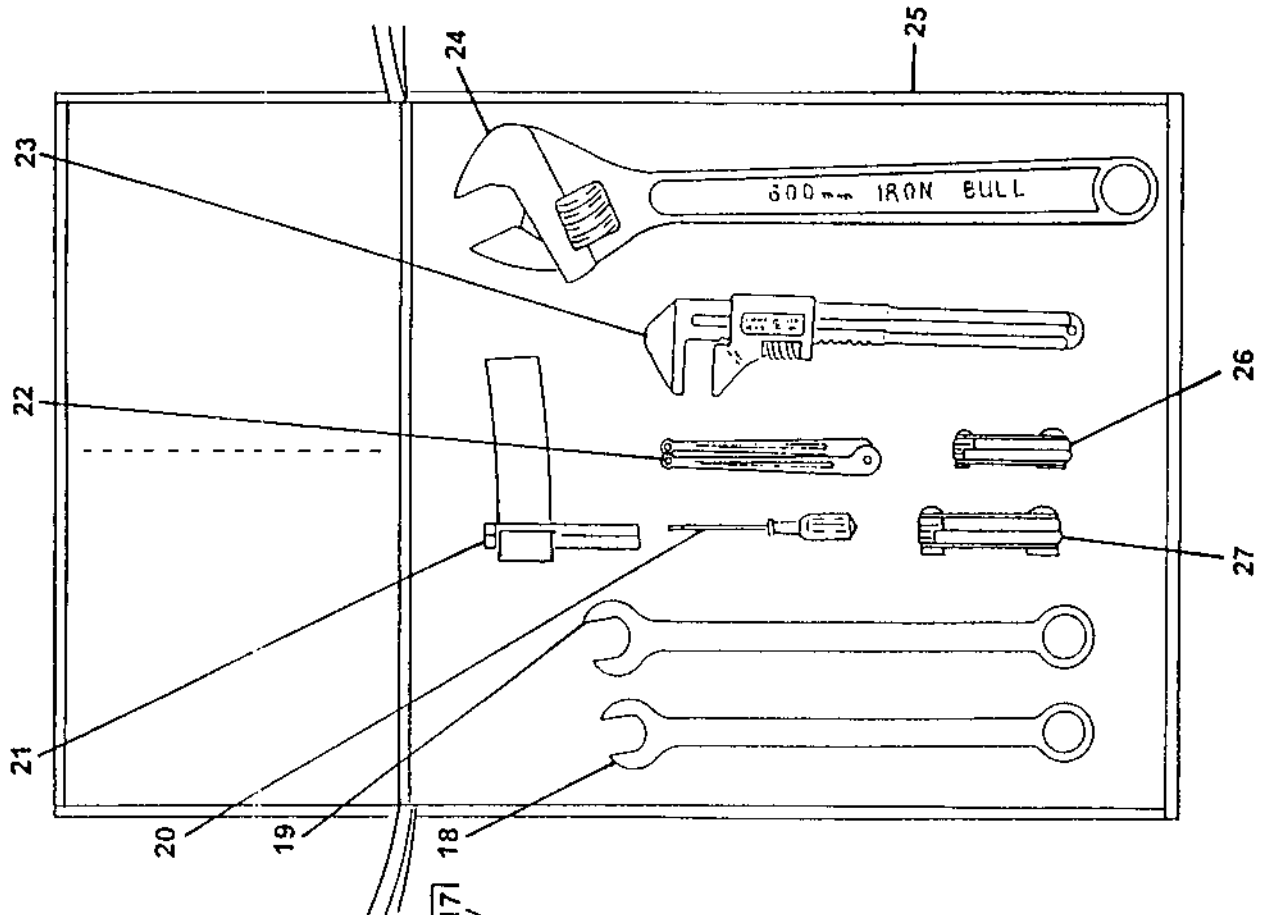
ITEM NO.	REED'S PARTS NO.	DESCRIPTION					QTY
		1	2	3	4	5	
-1	71460	Kit, Accumulator Charge (See Group 80, Figure 01 for NHA)					Ref
2		• Case, Charge Kit					1
3		• Adapter, FPK / SB					1
4		• Adapter, G4					1
5		• Wrench, Allen					1
6		• Hose, Charging					1
7		• Unit, FPK Charging and Gagging					1

DASH (-) ITEM NOT ILLUSTRATED



OPTIONAL TOOL KIT ASSEMBLY

XXT 42
PARTS
GROUP 80
FIGURE 03
PAGE 01



ITEM NO.	REED'S PARTS NO.	DESCRIPTION					QTY
		1	2	3	4	5	
-1	79020	Assembly, Optional Tool Kit (See Group 80, Figure 01 for NHA)					Ref
2	79037	• Kit, Wrench					1
3		• • Wrench, 1/2 Inch					1
4		• • Wrench, 7/16 Inch					1
5		• • Wrench, 3/8 Inch					1
6		• • Wrench, 9/16 Inch					1
7		• • Wrench, 5/8 Inch					1
8		• • Wrench, 11/16 Inch					1
9		• • Wrench, 3/4 Inch					1
10		• • Wrench, 13/16 Inch					1
11		• • Wrench, 7/8 Inch					1
12		• • Wrench, 15/16 Inch					1
13		• • Wrench, 1 Inch					1
14		• • Wrench, 1-1/16 Inch					1
15		• • Wrench, 1-1/8 Inch					1
16		• • Wrench, 1-1/4 Inch					1
17		• • Wrap, Plastic					1
18	79036	• Wrench, 1-3/8 Inch					1
19	79028	• Wrench, 1-1/2 Inch					1
20	79038	• Screwdriver					1
21	79814	• Wrench, Strap (for Filter)					1
22	79325	• Wrench, Spanner					1
23	79031	• Wrench, Monkey					1
24	79032	• Wrench, Adjustable 24 Inch					1
25	77502	• Bag, Tool					1
26	79030	• Set, Metric Allen Key (2-8 mm)					1
27	79029	• Set, Standard Allen Key (3/16-3/8 Inch)					1

DASH (-) ITEM NOT ILLUSTRATED

REED

**MODEL XXT 42 TRUCK MOUNTED
CONCRETE BOOM PUMP
ILLUSTRATED PARTS MANUAL**

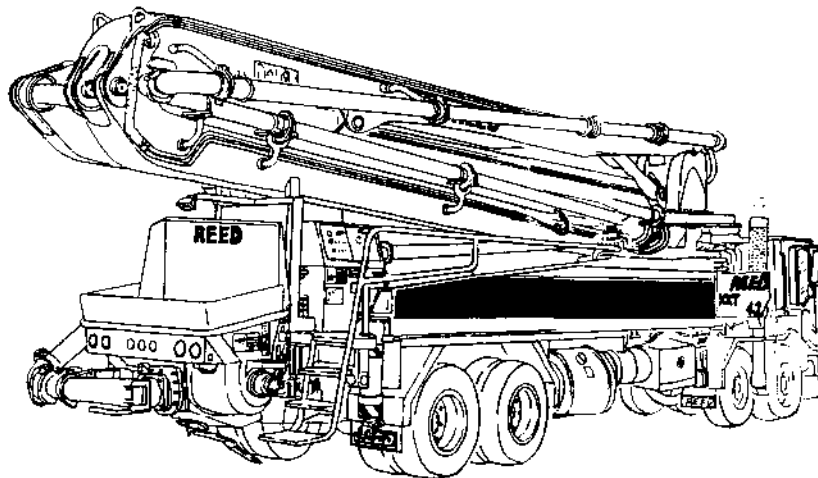
**XXT 42
PARTS
GROUP 80
FIGURE 04
PAGE 01**

THIS PAGE INTENTIONALLY LEFT BLANK.



REED TRUCK MOUNTED CONCRETE BOOM PUMP MODEL **XXT 42**
ILLUSTRATED PARTS MANUAL GROUP 90 BOOM INSTALLATION CONTAINS
THE FOLLOWING FIGURES:

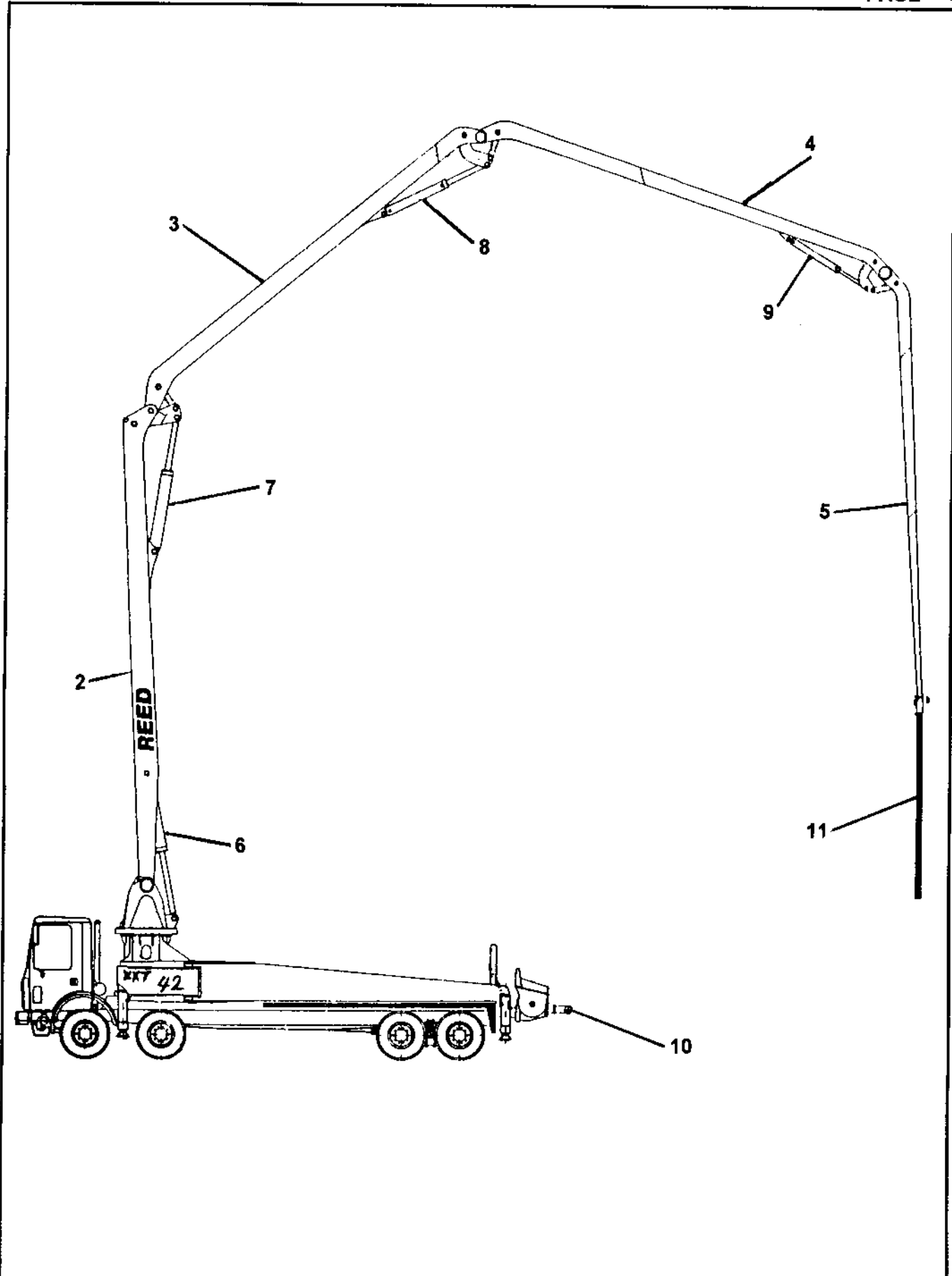
- FIGURE 00** TABLE OF CONTENTS
- FIGURE 01** BOOM INSTALLATION
- FIGURE 02** FIRST BOOM ASSEMBLY
- FIGURE 03** SECOND BOOM ASSEMBLY
- FIGURE 04** THIRD BOOM ASSEMBLY
- FIGURE 05** FOURTH BOOM ASSEMBLY
- FIGURE 06** FIRST BOOM CYLINDER ASSEMBLY
- FIGURE 07** SECOND BOOM CYLINDER ASSEMBLY
- FIGURE 08** THIRD BOOM CYLINDER ASSEMBLY
- FIGURE 09** FOURTH BOOM CYLINDER ASSEMBLY
- FIGURE 10** CONCRETE PIPELINE ASSEMBLY (DECK AREA)
- FIGURE 11** CONCRETE PIPELINE ASSEMBLY (BOOM AREA)





BOOM INSTALLATION

XXT 42
PARTS
GROUP 90
FIGURE 01
PAGE 01

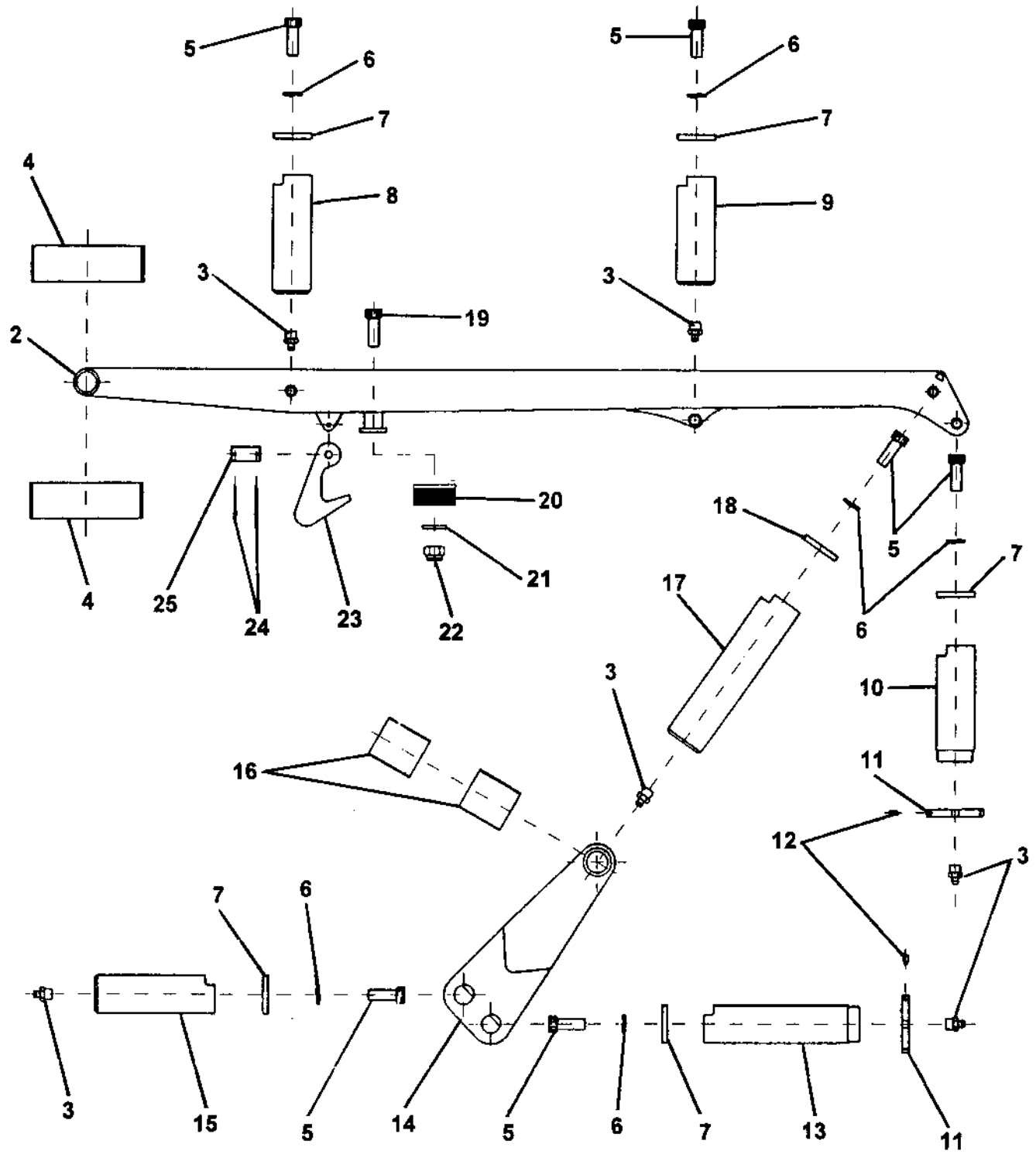
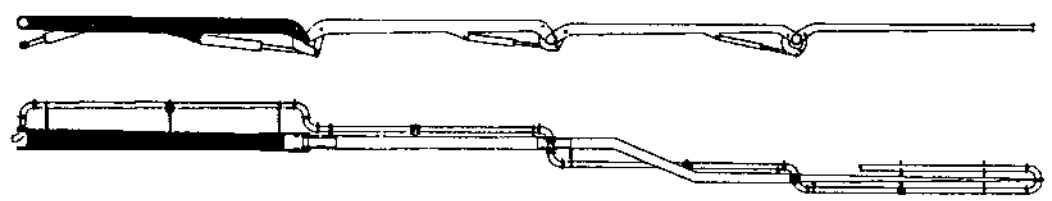


REVISION:

ITEM NO.	REED'S PARTS NO.	DESCRIPTION					QTY
		1	2	3	4	5	
-1	90-01	Installation, Boom (See Group 10, Figure 01 for NHA)					Ref
2	C-2A1	• Assembly, First Boom (See Group 90, Figure 02 for DET)					1
3	C-2A2	• Assembly, Second Boom (See Group 90, Figure 03 for DET)					1
4	C-2A3	• Assembly, Third Boom (See Group 90, Figure 04 for DET)					1
5	C-2A4	• Assembly, Fourth Boom (See Group 90, Figure 05 for DET)					1
6	C-2B1	• Assembly, First Boom Cylinder (See Group 90, Figure 06 for DET)					1
7	C-2B2	• Assembly, Second Boom Cylinder (See Group 90, Figure 07 for DET)					1
8	C-2B3	• Assembly, Third Boom Cylinder (See Group 90, Figure 08 for DET)					1
9	C-2B4	• Assembly, Fourth Boom Cylinder (See Group 90, Figure 09 for DET)					1
10	90-10	• Assembly, Concrete Pipe Line (Deck Area) (See Group 90, Figure 10 for DET)					1
11	C-2T	• Assembly, Concrete Pipe Line (Boom Area) (See Group 90, Figure 11 for DET)					1

DASH (-) ITEM NOT ILLUSTRATED

FIRST BOOM ASSEMBLY



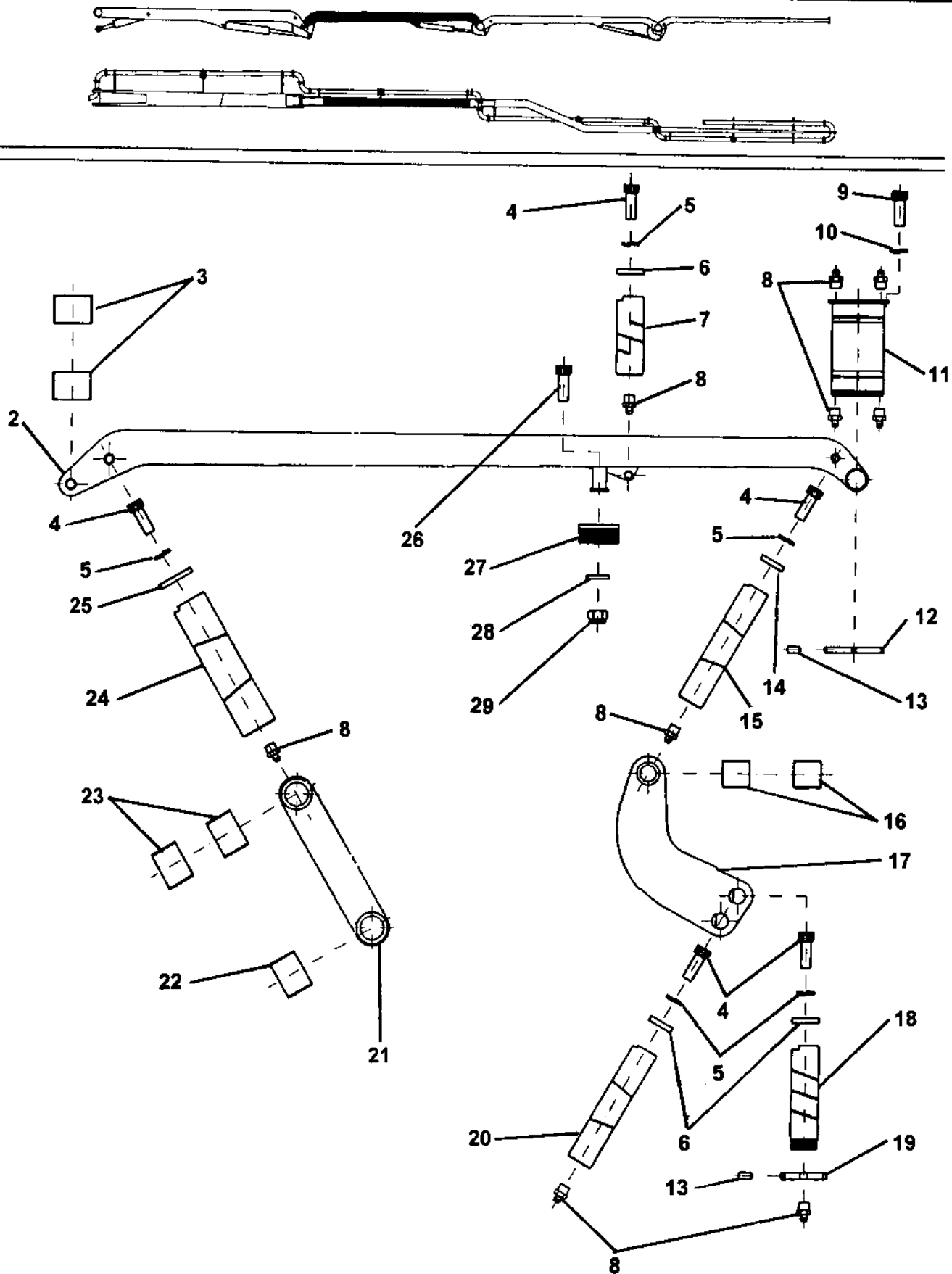
ITEM NO.	REED'S PARTS NO.	DESCRIPTION					QTY
		1	2	3	4	5	
-1	C-2A1	Assembly, First Boom (See Group 90, Figure 01 for NHA)					Ref
2	C-2A101	• Structure, Base					1
3	C-VI131.1010	• Nipple, Grease					7
4	C-CD230.235100	• Bearing, Anti-friction					2
5	C-VC110.101525	• Screw					7
6	C-UE110.10	• Washer, Elastic					7
7	C-UD090.1106	• Washer, Pin Locking					5
8	C-2P111	• Pin					1
9	C-5P103	• Pin					1
10	C-2P115	• Pin					2
11	C-GV085.2015	• Ring, Thread					3
12	C-VG122.061010	• Screw					4
13	C-2P113	• Pin					1
14	C-2C101	• Beam					1
15	C-2P114	• Pin					1
16	C-CD100.105100	• Bearing, Anti-friction					2
17	C-2P116	• Pin					1
18	C-UD090.1106	• Washer, Pin Locking					3
19	C-VC110.101530	• Screw					2
20	C-UG440.170100	• Pad, Rubber					1
21	C-UP110.10	• Washer					2
22	C-VD221.1015	• Nut, Self Locking					2
23	C-4A103	• Hook					1
24	C-VS110.04050	• Pin, Split					2
25	802069	• Pin-Hook					1

DASH (-) ITEM NOT ILLUSTRATED

REED

SECOND BOOM ASSEMBLY

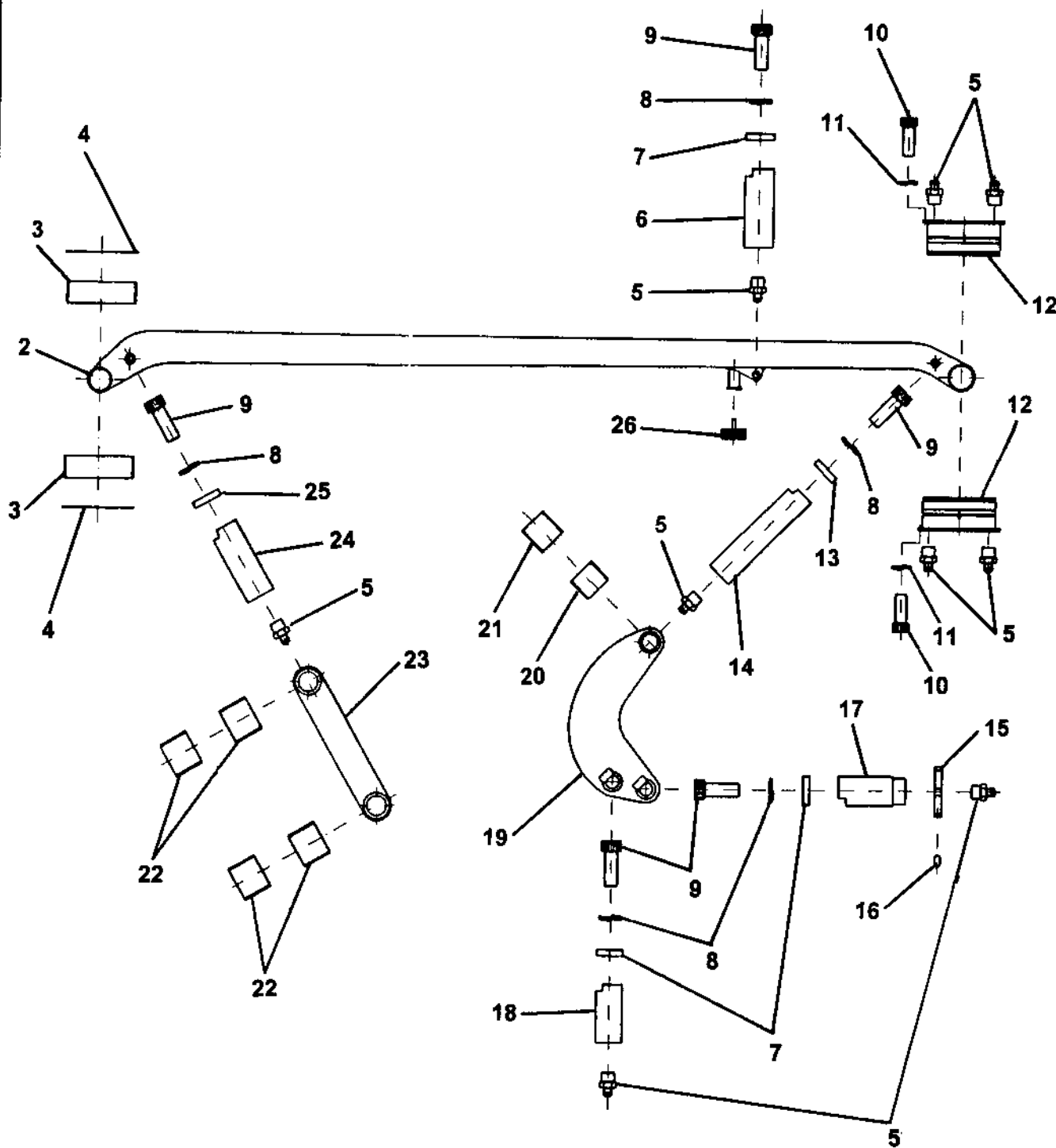
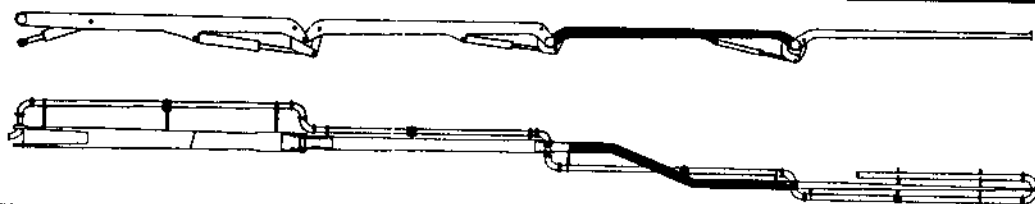
XXT 42
PARTS
GROUP 90
FIGURE 03
PAGE 01



REVISION:

ITEM NO.	REED'S PARTS NO.	DESCRIPTION					QTY
		1	2	3	4	5	
-1	C-2A2	Assembly, Second Boom (See Group 90, Figure 01 for NHA)					Ref
2	C-2A201	• Structure, Base					1
3	C-CD095.100080	• Bearing, Anti-friction					2
4	C-VC110.101525	• Screw					5
5	C-UE110.10	• Washer, Elastic					5
6	C-UD070.1105	• Washer, Pin Locking					3
7	C-2P111	• Pin					1
8	C-VI131.1010	• Nipple, Grease					9
9	C-VC110.081220	• Screw					4
10	C-UE110.08	• Washer, Elastic					4
11	C-2P110	• Pin					1
12	C-GV218.2015	• Ring, Thread					1
13	C-VG122.061010	• Screw					4
14	C-UD080.1106	• Washer, Pin Locking					1
15	C-2P109	• Pin					1
16	C-CD080.085100	• Bearing, Anti-friction					2
17	C-2C201	• Beam					1
18	C-2P108	• Pin					1
19	C-GV070.2015	• Ring, Thread					1
20	C-2P112	• Pin					1
21	C-2D101	• Rod, Connecting					1
22	C-CD090.095120	• Bearing, Anti-friction					1
23	C-CD090.095100	• Bearing, Anti-friction					2
24	C-2P118	• Pin					1
25	C-UD090.1106	• Washer, Pin Locking					1
26	C-VC110.101530	• Screw					2
27	C-UG410.170100	• Pad, Rubber					1
28	C-UP110.10	• Washer					2
29	C-VD221.1015	• Nut, Self Locking					2

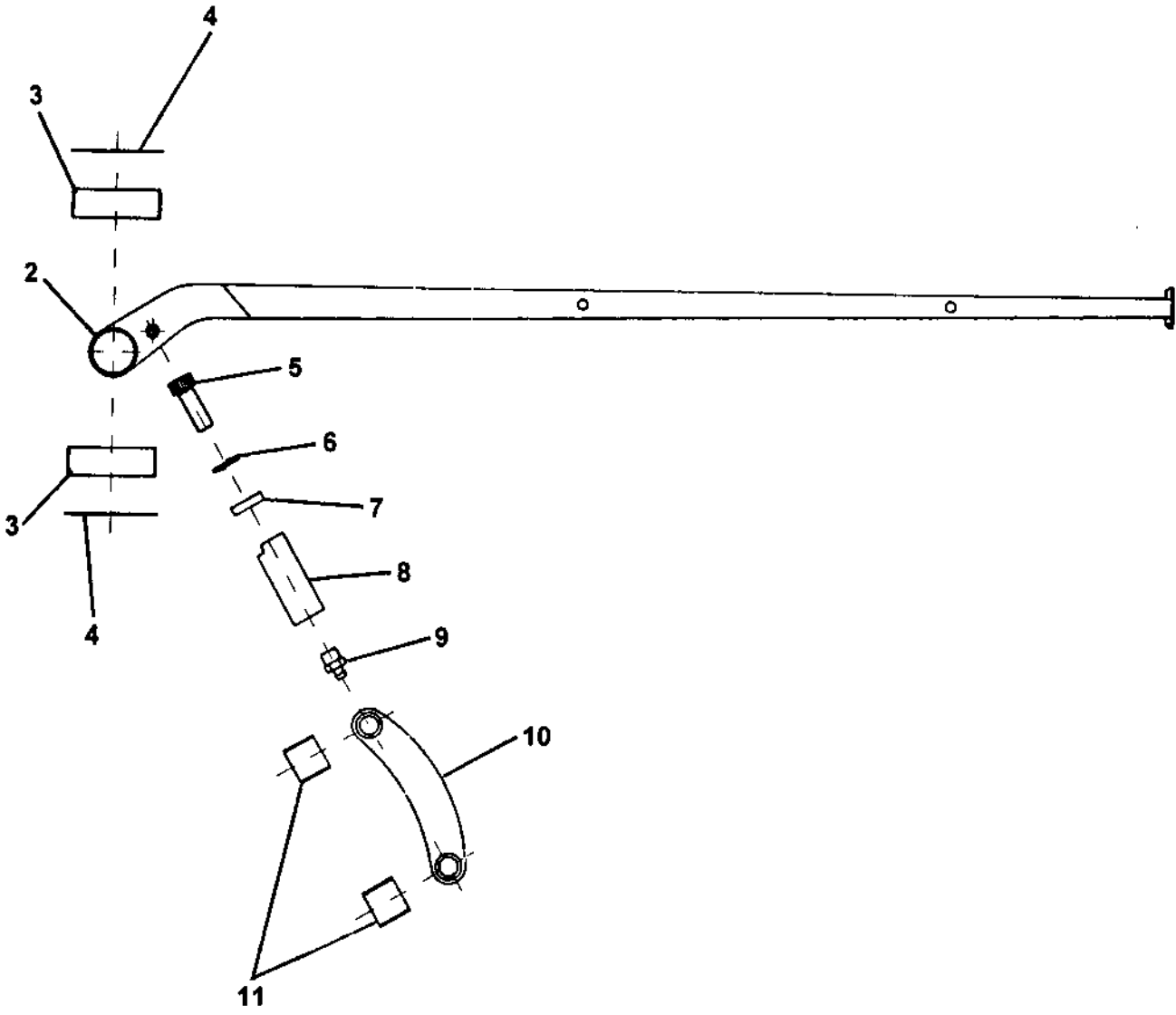
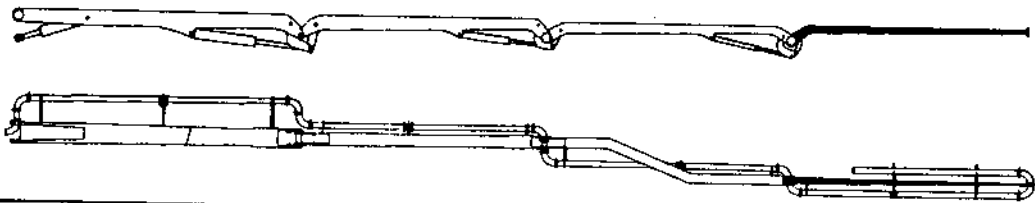
DASH (-) ITEM NOT ILLUSTRATED



ITEM NO.	REED'S PARTS NO.	DESCRIPTION					QTY
		1	2	3	4	5	
-1	C-2A3	Assembly, Third Boom (See Group 90, Figure 01 for NHA)					Ref
2	C-2A301	• Structure, Base					1
3	C-CD220.225060	• Bearing, Anti-friction					2
4	C-CR220.02	• Ring, Wear					2
5	C-VI131.1010	• Nipple, Grease					9
6	C-2P101	• Pin					1
7	C-UD055.1105	• Washer, Pin Locking					3
8	C-UE110.10	• Washer, Elastic					5
9	C-VC110.101525	• Screw					5
10	C-VE110.081220	• Screw					8
11	C-UE110.08	• Washer, Elastic					8
12	C-4P105B	• Pin					2
13	C-UD06.1105	• Washer, Pin Locking					1
14	C-2P104	• Pin					1
15	C-GV050.1515	• Ring, Threaded					1
16	C-VG122.061010	• Screw					2
17	C-2P102	• Pin					1
18	C-2P103	• Pin					1
19	C-2C301	• Beam					1
20	C-CD060.065060	• Bearing, Anti-friction					2
21	C-CD060.065070	• Bearing, Anti-friction					1
22	C-CD075.080060	• Bearing, Anti-friction					1
23	C-2D201	• Rod, Connecting					1
24	C-2P107	• Pin					1
25	C-UD070.1105	• Washer, Pin Locking					1
26	UG220.10012	• Pad, Rubber					1

DASH (-) ITEM NOT ILLUSTRATED

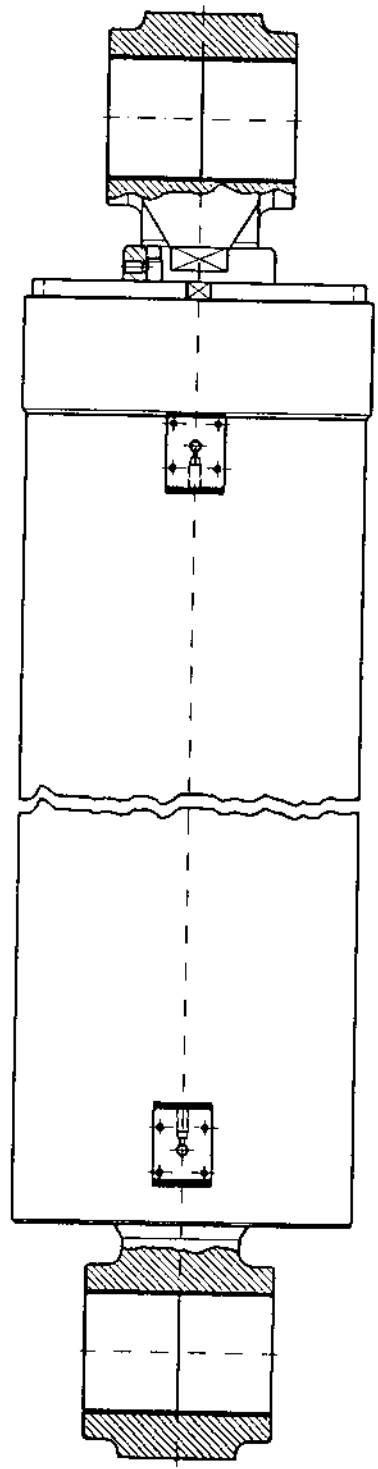
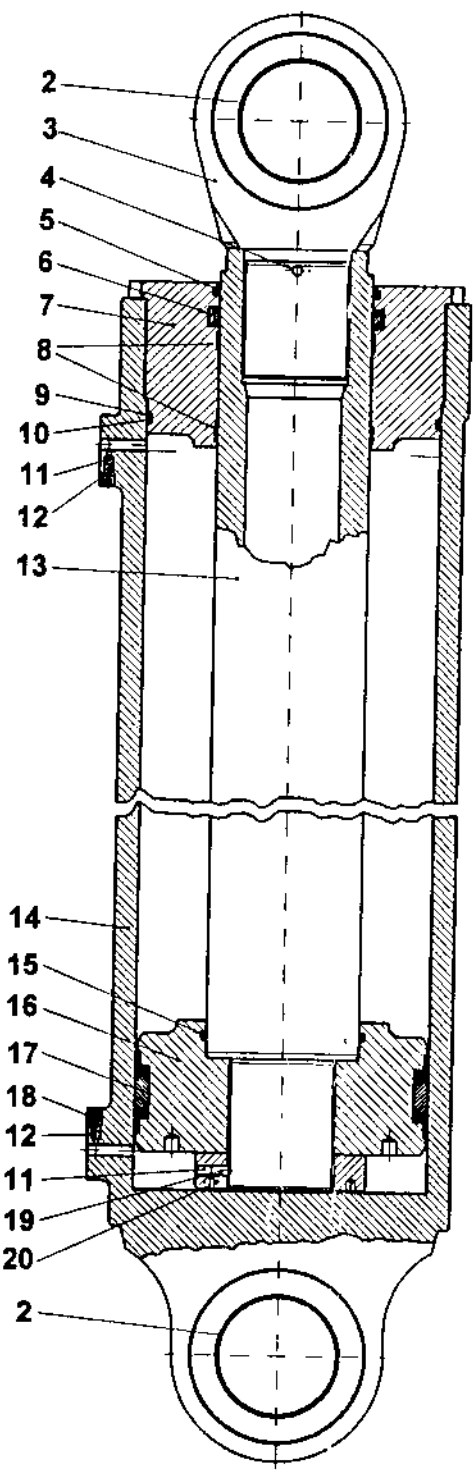
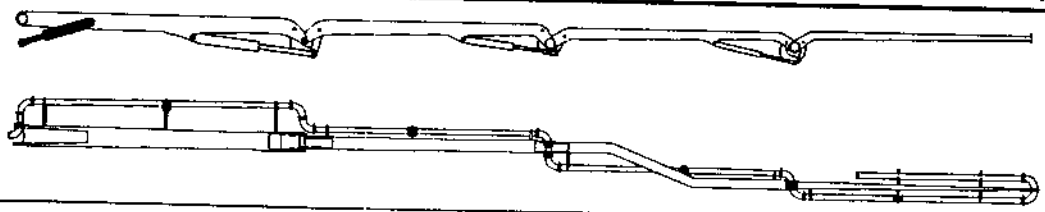
FOURTH BOOM ASSEMBLY



ITEM NO.	REED'S PARTS NO.	DESCRIPTION					QTY
		1	2	3	4	5	
-1	C-2A4	Assembly, Fourth Boom (See Group 90, Figure 01 for NHA)					Ref
2	C-2A401	• Structure, Base					1
3	C-CD250.255040	• Bearing, Anti-friction					2
4	C-CR250.02	• Ring, Wear					2
5	C-VC110.101525	• Screw					1
6	C-UE110.10	• Washer, Elastic					1
7	C-UD050.1105	• Washer, Pin Locking					1
8	C-2P101	• Pin					1
9	C-VI131.1010	• Nipple, Grease					3
10	C-2D301	• Rod, Connection					1
11	C-CD055.055050	• Bearing, Anti-friction					2

DASH (-) ITEM NOT ILLUSTRATED

FIRST BOOM CYLINDER ASSEMBLY





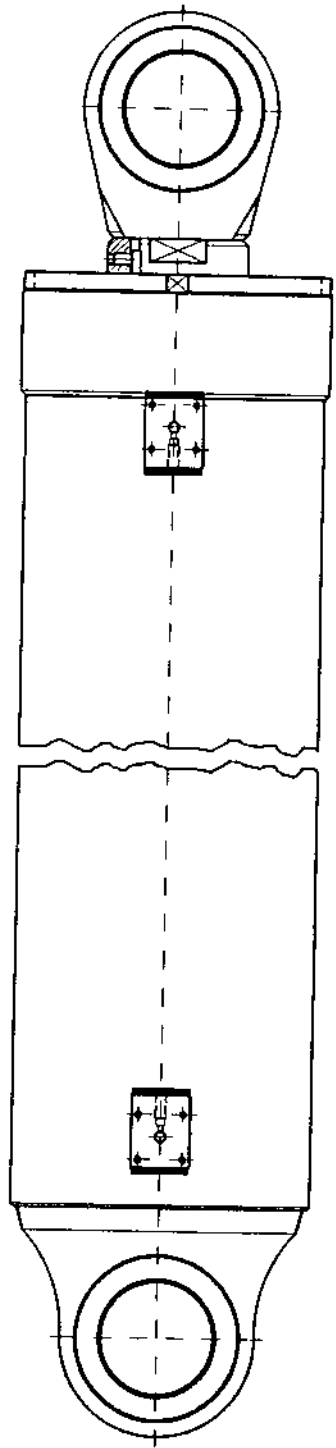
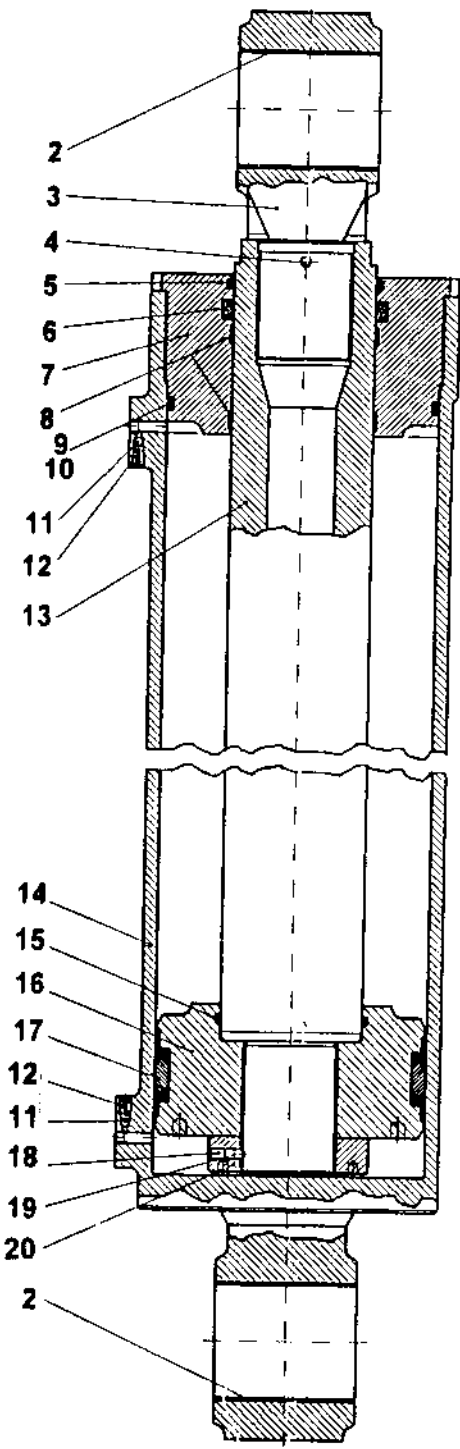
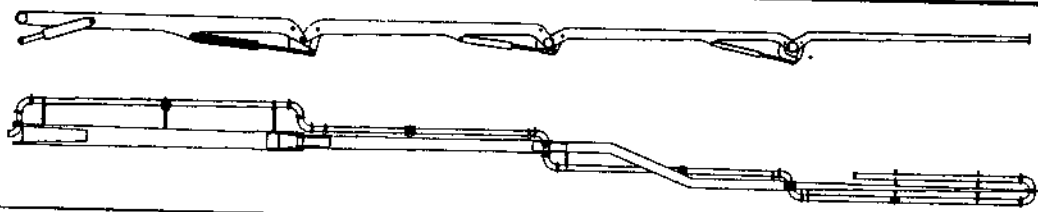
FIRST BOOM CYLINDER ASSEMBLY

XXT 42
PARTS
GROUP 90
FIGURE 06
PAGE 02

ITEM NO.	REED'S PARTS NO.	1 2 3 4 5	DESCRIPTION	QTY
-1	C-2B1		Assembly, First Boom Cylinder (See Group 90, Figure 01 for NHA)	Ref
2	C-CD100.105080		• Bearing, Anti Friction	4
3	C-2B108		• Cap, Rod	1
4	C-VG122.101515		• Screw	1
5	C-BR310.130		• Gasket, Seal	1
6	C-BT110.130		• Gasket, Seal	1
7	C-5B101		• Head, Slide Rod	1
8	C-AG123.130		• Ring, Slide Rod	2
9	C-AP110.375		• Seal, Gasket	1
10	C-AO120.375		• Ring, Sealing	1
11	C-VG121.081212		• Screw	1
12	C-CS100.007		• Ball, Still	2
13	C-2B107		• Rod	1
14	C-2B102		• Cylinder	1
15	C-AO420.1208		• Ring, Sealing	1
16	C-2B112		• Piston	1
17	C-BS229848801A		• Gasket, Seal	1
18	C-WPVS1		• Valve, Air Hole	2
19	C-VG122.081215		• Screw	1
20	C-2B105		• Nut, Rod	1

DASH (-) ITEM NOT ILLUSTRATED

SECOND BOOM CYLINDER ASSEMBLY



ITEM NO.	REED'S PARTS NO.	DESCRIPTION					QTY
		1	2	3	4	5	
-1	C-2B2	Assembly, Second Boom Cylinder (See Group 90, Figure 01 for NHA)					Ref
2	C-CD095.100060	• Bearing, Anti Friction					4
3	C-2B208	• Cap, Rod					1
4	C-VG122.101515	• Screw					1
5	C-BR310.120	• Gasket, Seal					1
6	C-BT110.120	• Gasket, Seal					1
7	C-2B201	• Head, Slide Rod					1
8	C-AG123.120	• Ring, Slide Rod					2
9	C-AO120.372	• Ring, Sealing					1
10	C-AP110.372	• Seal, Gasket					1
11	C-CS100.007	• Ball, Steel					2
12	C-WPVS1	• Valve, Air Hole					2
13	C-2B207	• Rod					1
14	C-3B202	• Cylinder					1
15	C-AO420.199	• Ring, Sealing					1
16	C-2B212	• Piston					1
17	C-BS229058071A	• Ring, Sealing					1
18	C-VG121.081212	• Screw					1
19	C-VG122.081215	• Screw					1
20	C-2B209	• Nut, Rod					1

DASH (-) ITEM NOT ILLUSTRATED