

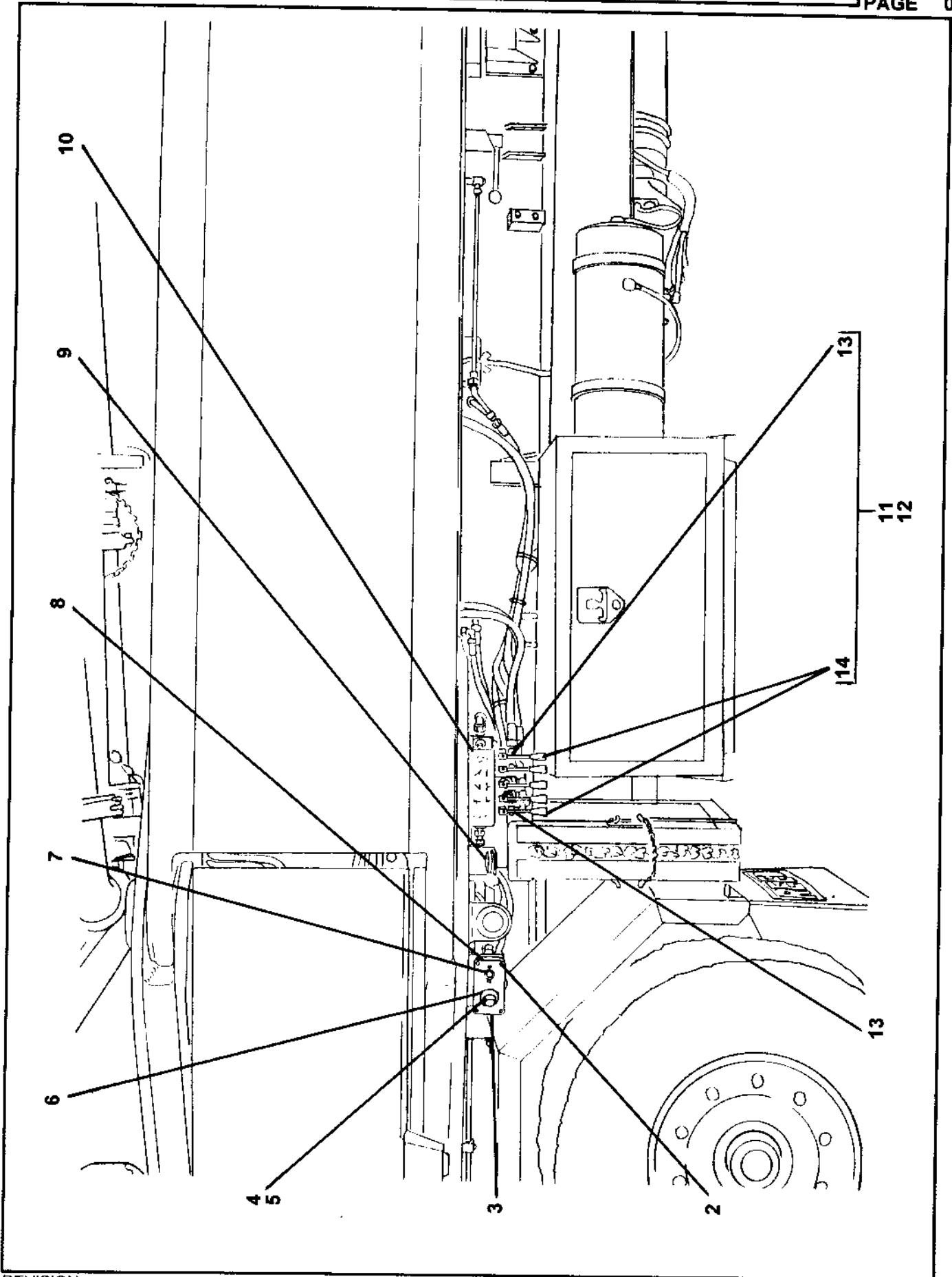
ITEM NO.	REED'S PARTS NO.	DESCRIPTION					QTY
		1	2	3	4	5	
30	W-104118	• Resistor, 100 OHM					1
31	W-100710	• Contact, 24 Pin Female (A)					1
32	W-101553	• Contact, 24 Pin Housing (A)					1
33	W-102577	• Block, Terminal					1
34	W-105817	• Clamp					2
35	W-105818	• Plate, End					2
36	W-104099	• Bag, Circuit Diagram					1
37	W-101921	• Fuse, 10 AMP					3
38	W-104096	• Fuse, 20 AMP					2
39	W-101922	• Fuse, 5 AMP					1
40	W-101577	• Holder, 8 Type Fuse					1
41	W-104185	• Diode					4
42	W-105331	• Relay, Time					1
43	W-105815	• Relay					1
44	W-105619	• Socket, Relay					1
45	W-104122	• Relay					1
46	W-104094	• Clip					6
47	W-100178	• Clip					4
48	W-104093	• Relay					6
49	W-104895	• Clip					2
50	W-103974	• Socket, Relay					1
51	W-105046	• Relay, Type 55.34					1
52	W-104860	• Clip					1
53	W-105814	• Element, Emergency Stop					1
54	W-100986	• Socket, Relay Bosch					4
55	W-104117	• Relay, Bosch					4
56	800461	• Box, Black					1
57	W-103693	• Contact, 8 Pin Female (C)					1
58	W-105816	• Contact, 8 Pin Housing (C)					1
59	W-103695	• Contact, Crimp (C)					1
60	W-103697	• Contact, Crimp (C)					1
61	W-104022	• Contact, 16 Pin Female (B)					1
62	W-104097	• Contact, 16 Pin Housing (B)					1
63	W-104669	• Condenser					1

DASH (-) ITEM NOT ILLUSTRATED

REED

DRIVER SIDE (LEFT HAND) OUTRIGGER CONTROLS ASSEMBLY

XXT 42
PARTS
GROUP 50
FIGURE 04
PAGE 01



REVISION:

**DRIVER SIDE (LEFT HAND)
OUTRIGGER CONTROLS ASSEMBLY**

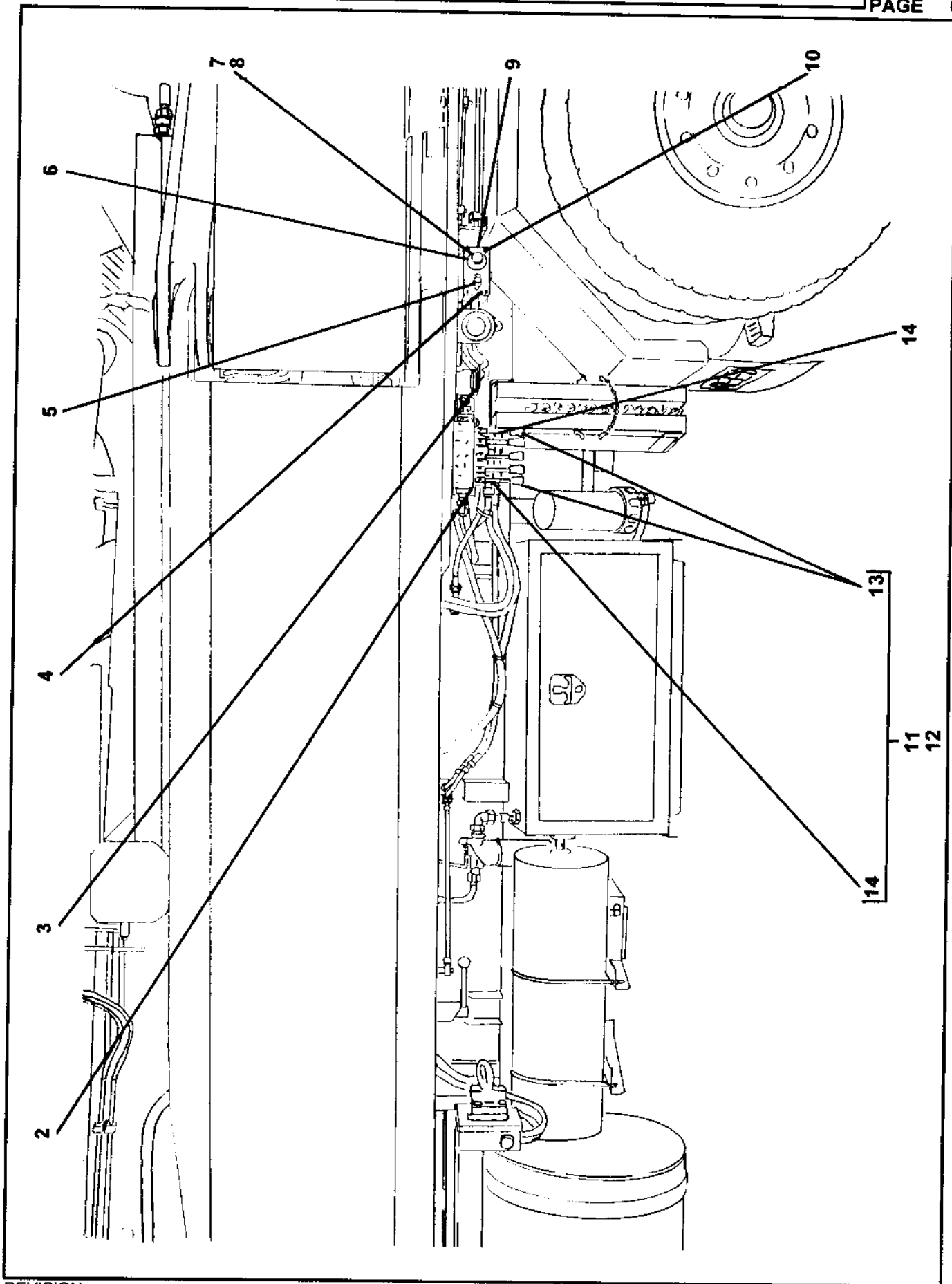
ITEM NO.	REED'S PARTS NO.	DESCRIPTION	QTY
-1	50-04	Assembly, Driver (L. H.) Side Outrigger Controls (See Group 50, Figure 01 for NHA)	Ref
2	W-103735	• Screw, Twist Lock Spring (attaching parts)	4
3		• Box, Non-Keyed Junction	1
4	W-104079	• Button, Emergency Stop	1
5	W-101712	• Contact, Emergency Stop Element	1
6	W-102278	• Nameplate, Emergency	1
7	W-100569	• Button, Push Operation	1
8		• Decal, Non-Keyed Junction Box	1
9	800099	• Level, Bubble	1
10	C-9V112	• Decal, Left Side Stabilizers	1
11	C-DD009	• Bank, Left Side Directional Valve	1
12		•• Lever	5
13		••• Lever, Knob	1
14		••• Boot, Rubber	1

DASH (-) ITEM NOT ILLUSTRATED

REED

PASSENGER SIDE (RIGHT HAND) OUTRIGGER CONTROLS ASSEMBLY

XXT 42
PARTS
GROUP 50
FIGURE 05
PAGE 01



REVISION:



**PASSENGER SIDE (RIGHT HAND)
OUTRIGGER CONTROLS ASSEMBLY**

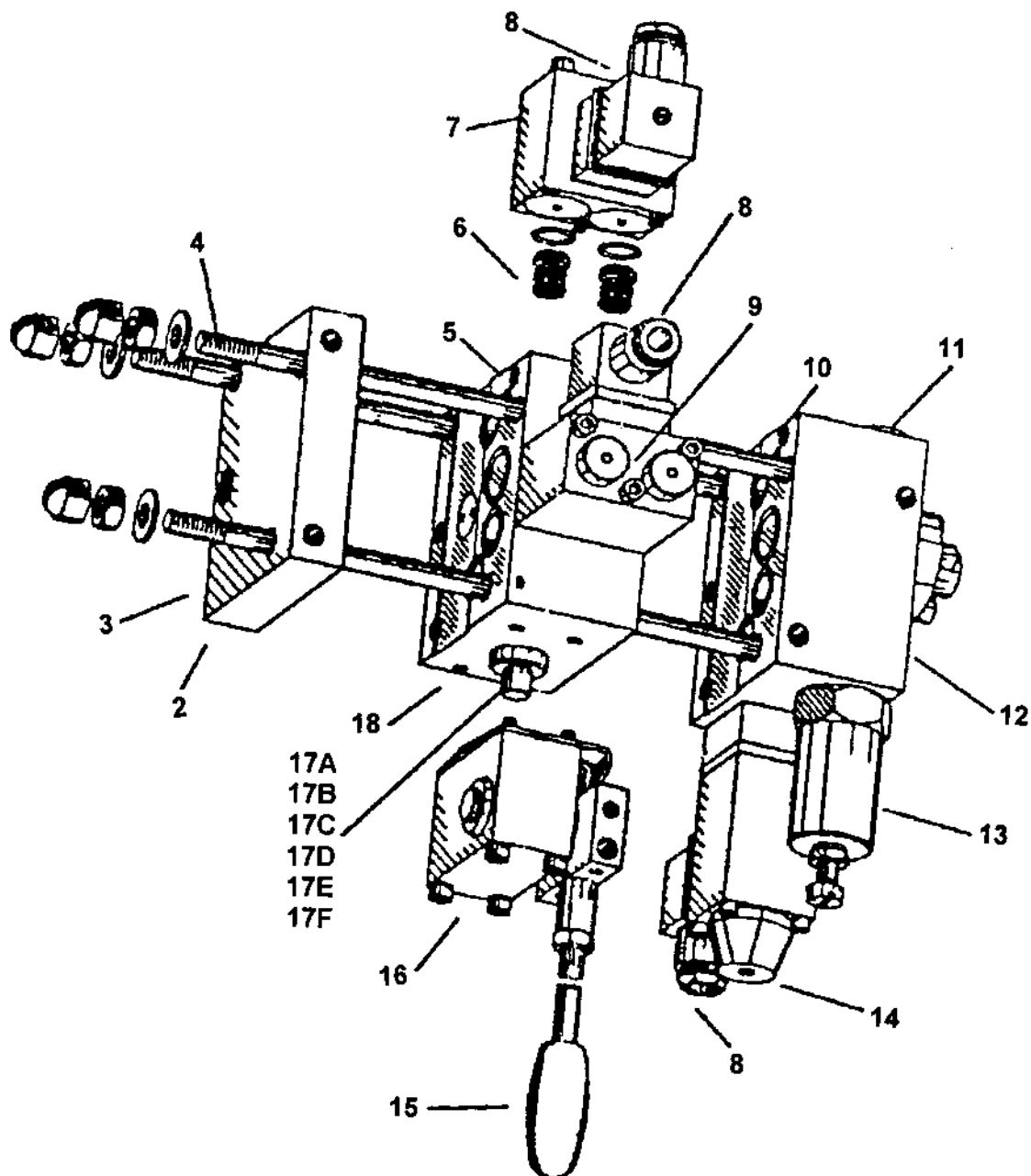
**XXT 42
PARTS
GROUP 50
FIGURE 05
PAGE 02**

ITEM NO.	REED'S PARTS NO.	DESCRIPTION					QTY
		1	2	3	4	5	
-1	50-05	Assembly, Passenger (R. H.) Side Outrigger Controls (See Group 50, Figure 01 for NHA)					Ref
2	C-9V111	• Decal, Right Side Stabilizers					1
3	800099	• Level, Bubble					1
4		• Decal, Keyed Junction Box					1
5	W-100569	• Button, Push Operation					1
6	W-102278	• Nameplate, Emergency					1
7	W-104079	• Button, Emergency Stop					1
8	W-101712	• Contact, Emergency Stop Element					1
9		• Box, Keyed Junction					1
10	W-103735	• Screw, Twist Lock Spring (attaching parts)					4
11	C-DD009	• Bank, Right Side Directional Valve					1
12		• • Lever					5
13		• • • Lever, Knob					1
14		• • • Boot, Rubber					1

DASH (-) ITEM NOT ILLUSTRATED

STATIONARY BOOM CONTROLS ASSEMBLY

XXT 42
PARTS
GROUP 50
FIGURE 06
PAGE 01



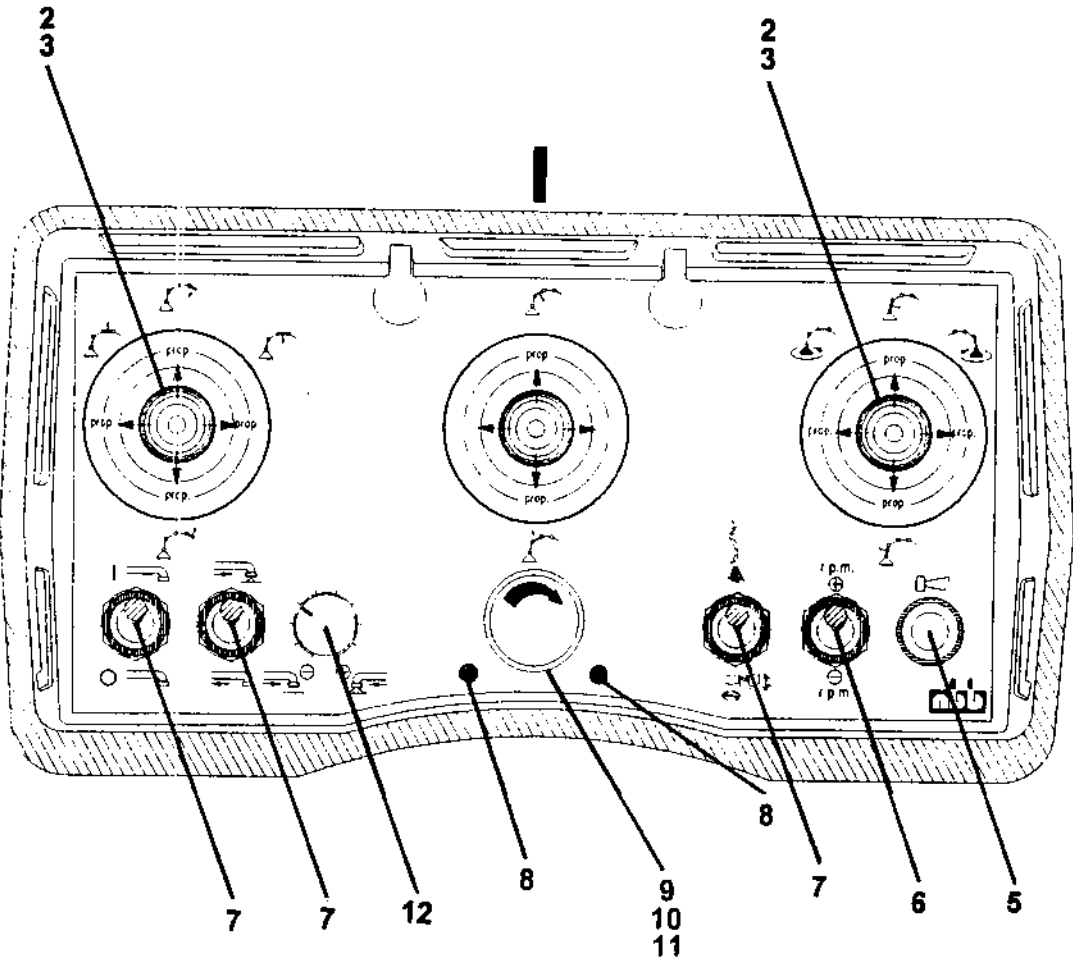
ITEM NO.	REED'S PARTS NO.	DESCRIPTION					QTY
		1	2	3	4	5	
-1	W-106710	Assembly, Stationary Boom Controls (See Group 50, Figure 01 for NHA)					Ref
2		• Plate, End					1
3		• Valve, Check					1
4		• Set, Tension Rod					1
5		• Kit, Valve Section Seal					6
6		• Valve, Press Reducing					6
7		• Solenoid, Actuation					6
8		• Plug, Solenoid					13
9		• Solenoid, Function					6
10		• Kit, Connection Block Seal					1
11		• Valve, Pilot Press Reducing					1
12		• Block, Connection					1
13		• Valve, Pressure Limiting					1
14		• Valve, Directional Seated					1
15		• Lever, Hand					6
16		• Housing, Actuation					6
17A	801622	• Spool , Boom A (63/63)					1
17B	801622	• Spool , Boom B (63/63)					1
17C	801271	• Spool , Boom C (40/40)					1
17D	801272	• Spool , Boom D (25/25)					1
17E	801271	• Spool , Outrigger (40/40)					1
17F	801271	• Spool , Rotation (40/40)					1
18		• Valve, Section					6
-19	C-4V120	• Decal, Control					1

DASH (-) ITEM NOT ILLUSTRATED

REED

CABLED REMOTE CONTROL ASSEMBLY

XXT 42
PARTS
GROUP 50
FIGURE 07
PAGE 01





CABLED REMOTE CONTROL ASSEMBLY

XXT 42
PARTS
GROUP 50
FIGURE 07
PAGE 02

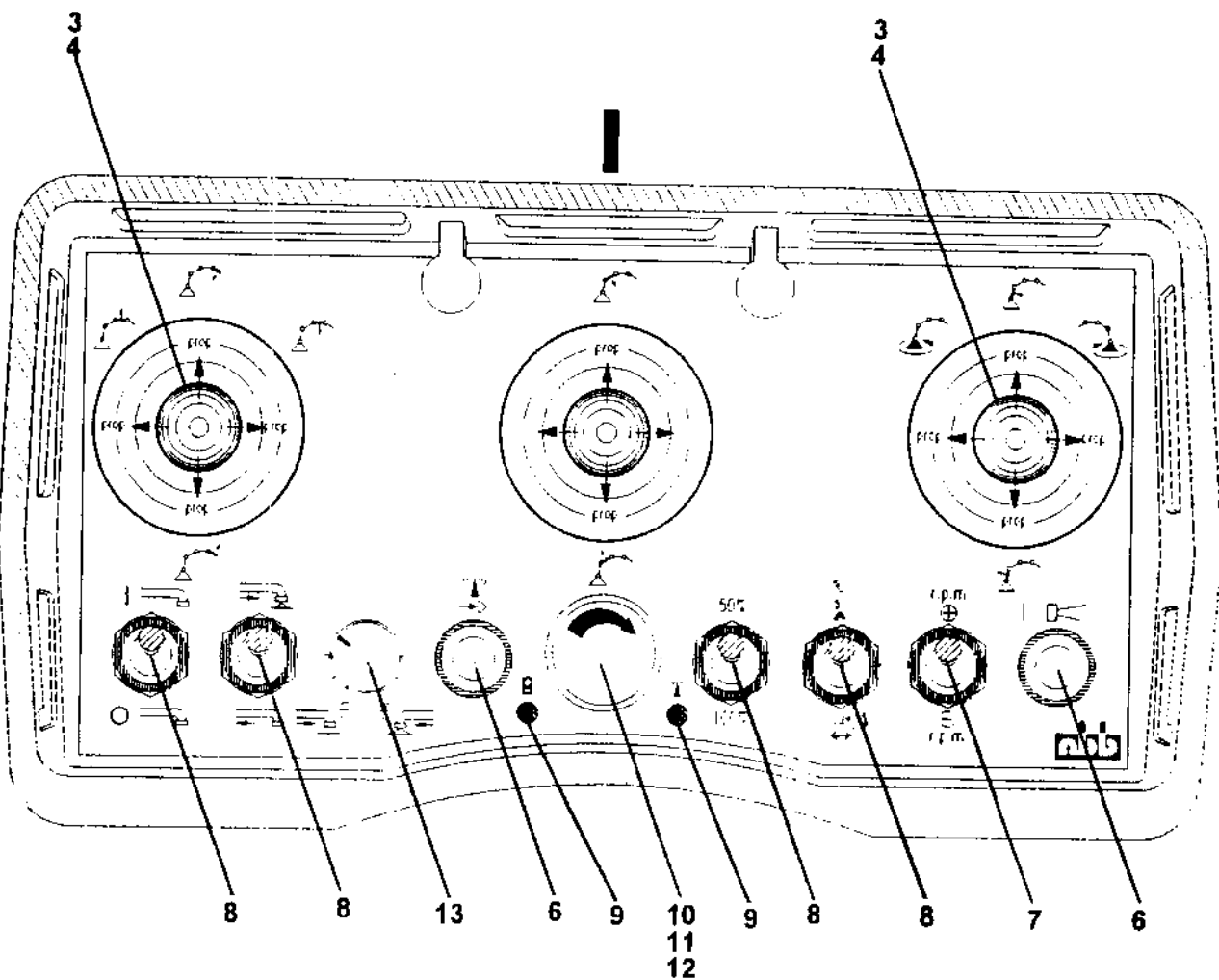
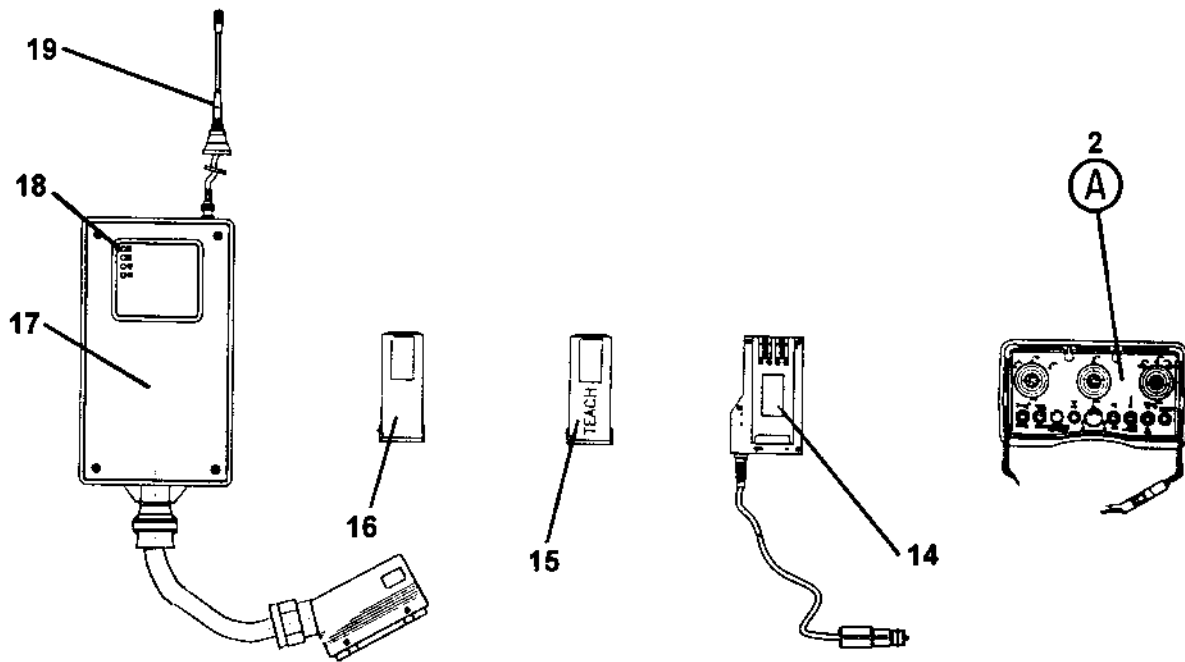
ITEM NO.	REED'S PARTS NO.	DESCRIPTION					QTY
		1	2	3	4	5	
-1	W-105565	Assembly, Cabled Remote Control (See Group 50, Figure 01 for NHA)					Ref
2		• Switch, Joy Stick Control					3
3		• • Boot, Rubber					3
-4		• Strap, Shoulder					1
5	3.740.1020	• Switch, O - Mom Push Button					1
6	3.740.1017	• Switch, Mom - O - Mom Toggle					1
7	3.740.1018	• Switch, On - O - On Toggle					3
8		• • Indicator, Light					2
9		• • Switch, Emergency Stop					1
10		• • • Knob, with Key					1
11		• • • Switch, Contact					1
12	3.980.1156	• • Potentiometer, with Knob					1

DASH (-) ITEM NOT ILLUSTRATED

REED

RADIO REMOTE CONTROL ASSEMBLY

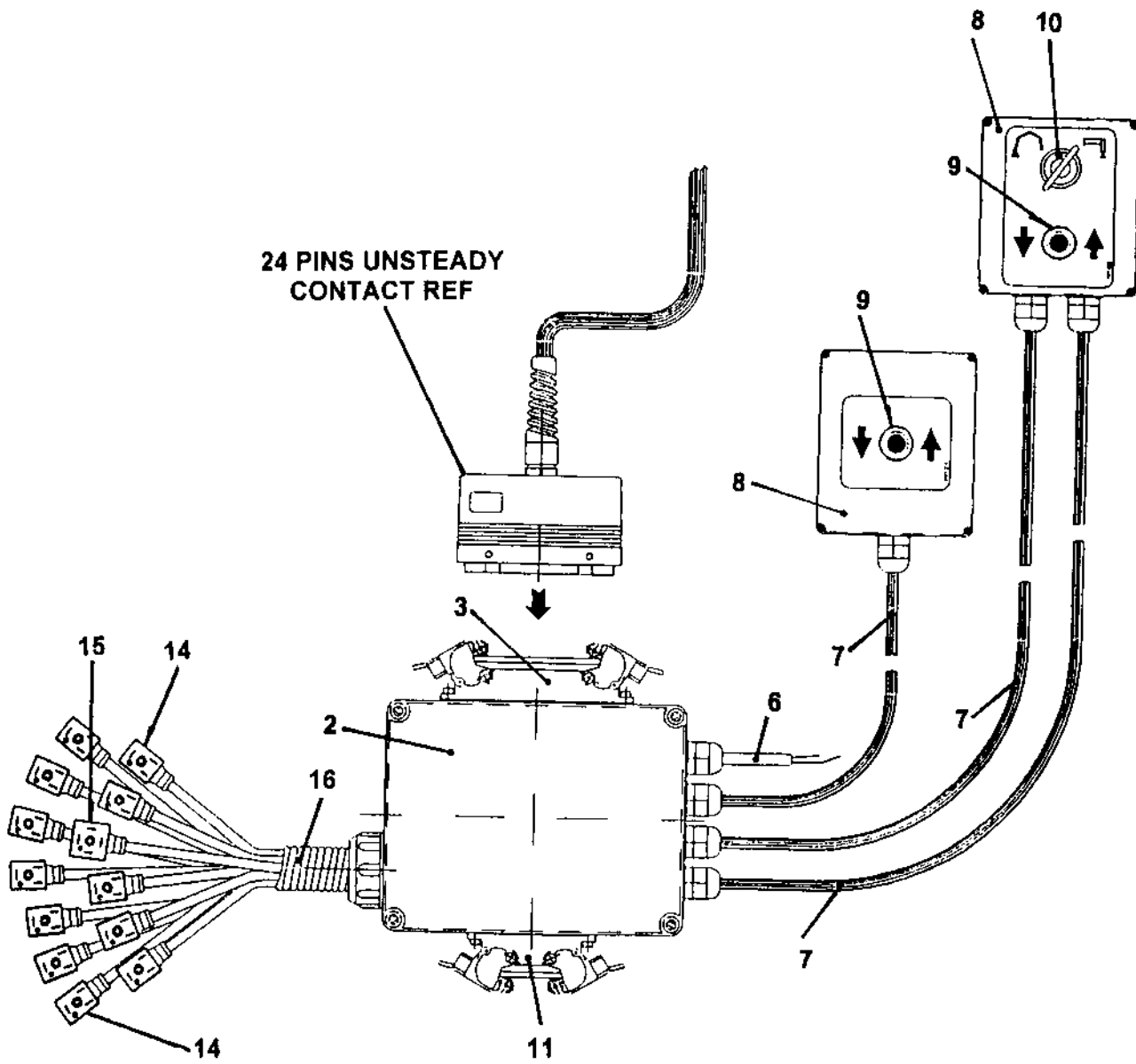
XXT 42
PARTS
GROUP 50
FIGURE 08
PAGE 01



(A)

ITEM NO.	REED'S PARTS NO.	DESCRIPTION					QTY
		1	2	3	4	5	
-1	W-105566	Assembly, Radio Remote Control (See Group 50, Figure 01 for NHA)					Ref
2	W-104763	• Transmitter, Radio Remote Control					1
3		• • Switch, Joy Stick Control					3
4		• • • Boot, Rubber					1
-5		• • Strap, Shoulder					1
6	3.740.1020	• • Switch, O – Mom Push Button					1
7	3.740.1017	• • Switch, O – Mom Toggle					1
8	3.740.1018	• • Switch, On – O - On Toggle					4
9		• • Indicator, Light					2
10		• • Switch, Emergency Stop					1
11		• • • Knob, with Key					1
12		• • • Switch, Contact					1
13	3.980.1156	• • Potentiometer, with Knob					1
14	W-104743	• Charger, Battery (See Group 50, Figure 02 for REF)					1
15	W-104430	• Battery, Teach					1
16	W-104745	• Battery, 7.2V (See Group 50, Figure 02 for REF)					1
17	W-104764	• Receiver, Radio Remote Control (See Group 50, Figure 03 for REF)					1
18		• • Indicator, Light					5
19	W-104774	• Antenna, Radio Remote Control (See Group 50, Figure 03 for REF)					1

DASH (-) ITEM NOT ILLUSTRATED





SHUNT ASSEMBLY

XXT 42
PARTS
GROUP 50
FIGURE 09
PAGE 02

ITEM NO.	REED'S PARTS NO.	DESCRIPTION					QTY
		1	2	3	4	5	
-1	C-VW00587	Assembly, Shunt (See Group 50, Figure 01 for NHA)					Ref
2	C-WW00230	• • Box, Connector 214 X 162 X 92					1
3		• • Plug, 24 Points Contact					1
-4	C-WW00154	• • • Plug					1
-5	C-WW00167	• • • Case, Plug					1
6	C-WW00116	• • Cable, Electric 1.6 m					1
7	C-WW00265	• • Cable, Electric 4 m					3
8	C-ES001	• • Box, Junction					2
9	C-EI001	• • Switch					2
10	C-WW00190	• • Switch, 2 Position Key					1
11		• • Plug, 10 Points Auxiliary Contact					1
-12	C-WW00011	• • • Plug					1
-13	C-WW00037	• • • Case, Plug					1
14	C-WW00065	• • Plug, Rectangular with Cable					12
15	C-WW00175	• • Plug, Square with Electric Cable					1
16	C-WW00100	• • Cable, 1.5 m Sheath					1

DASH (-) ITEM NOT ILLUSTRATED

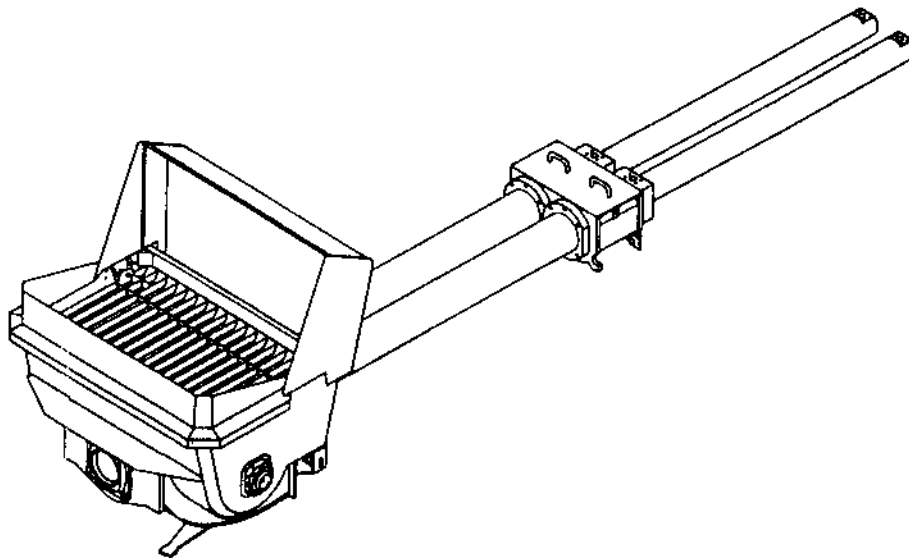


MODEL XXT 42 TRUCK MOUNTED
CONCRETE BOOM PUMP
ILLUSTRATED PARTS MANUAL

XXT 42
PARTS
GROUP 50
FIGURE 10
PAGE 01

THIS PAGE INTENTIONALLY LEFT BLANK.





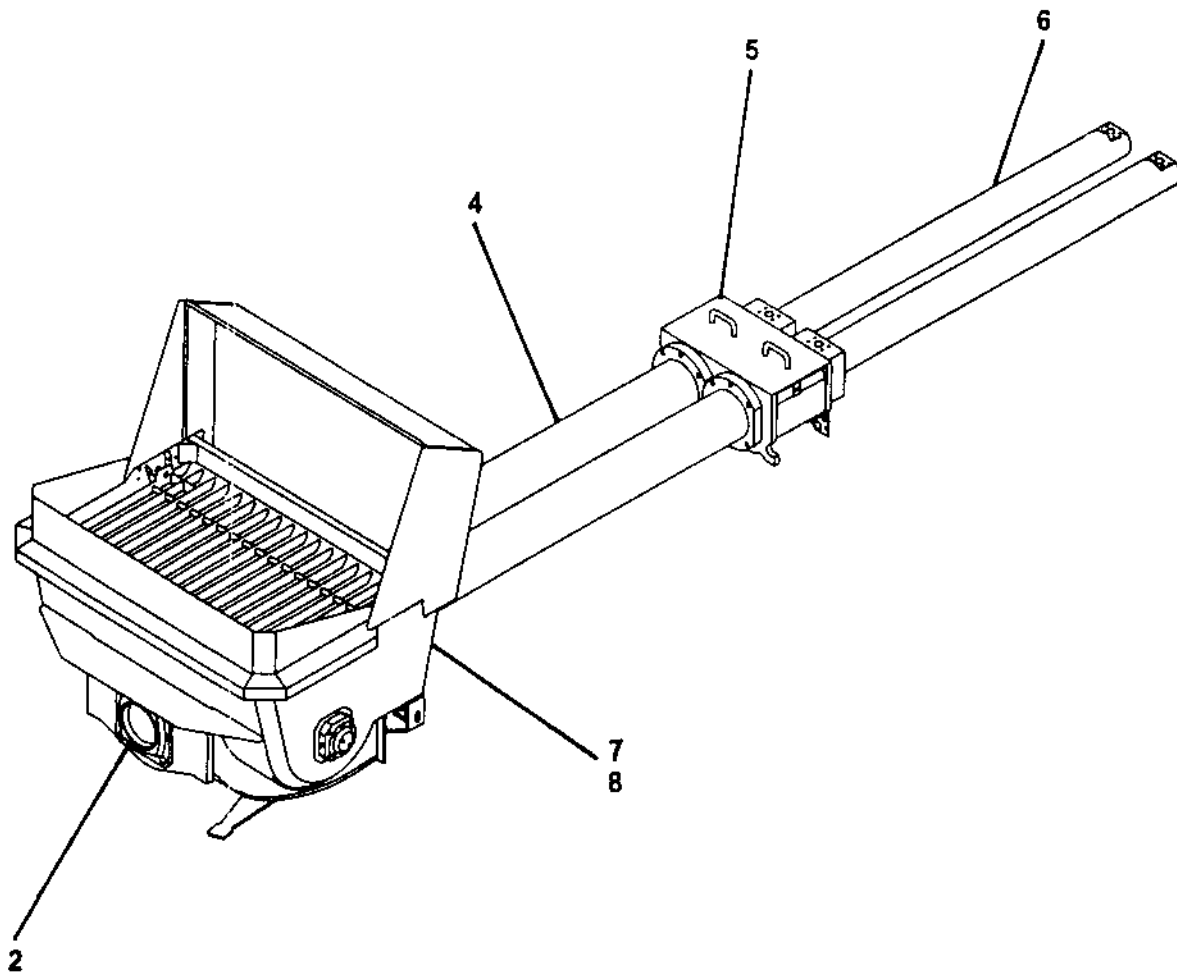
**REED TRUCK MOUNTED CONCRETE BOOM PUMP MODEL XXT 42
ILLUSTRATED PARTS MANUAL GROUP 60 PUMPING TRAIN INSTALLATION
CONTAINS THE FOLLOWING FIGURES:**

FIGURE 00	TABLE OF CONTENTS
FIGURE 01	PUMPING TRAIN INSTALLATION
FIGURE 02	SWING VALVE ASSEMBLY
FIGURE 03	TILTING DRIVE ASSEMBLY
FIGURE 04	TILTING CYLINDER ASSEMBLY
FIGURE 05	CONCRETE CYLINDER ASSEMBLY
FIGURE 06	WATER BOX ASSEMBLY
FIGURE 07	HYDRAULIC DRIVE CYLINDER ASSEMBLY
FIGURE 08	DRIVE CYLINDER SUB-ASSEMBLY

REED

PUMPING TRAIN INSTALLATION

XXT 42
PARTS
GROUP 60
FIGURE 01
PAGE 01



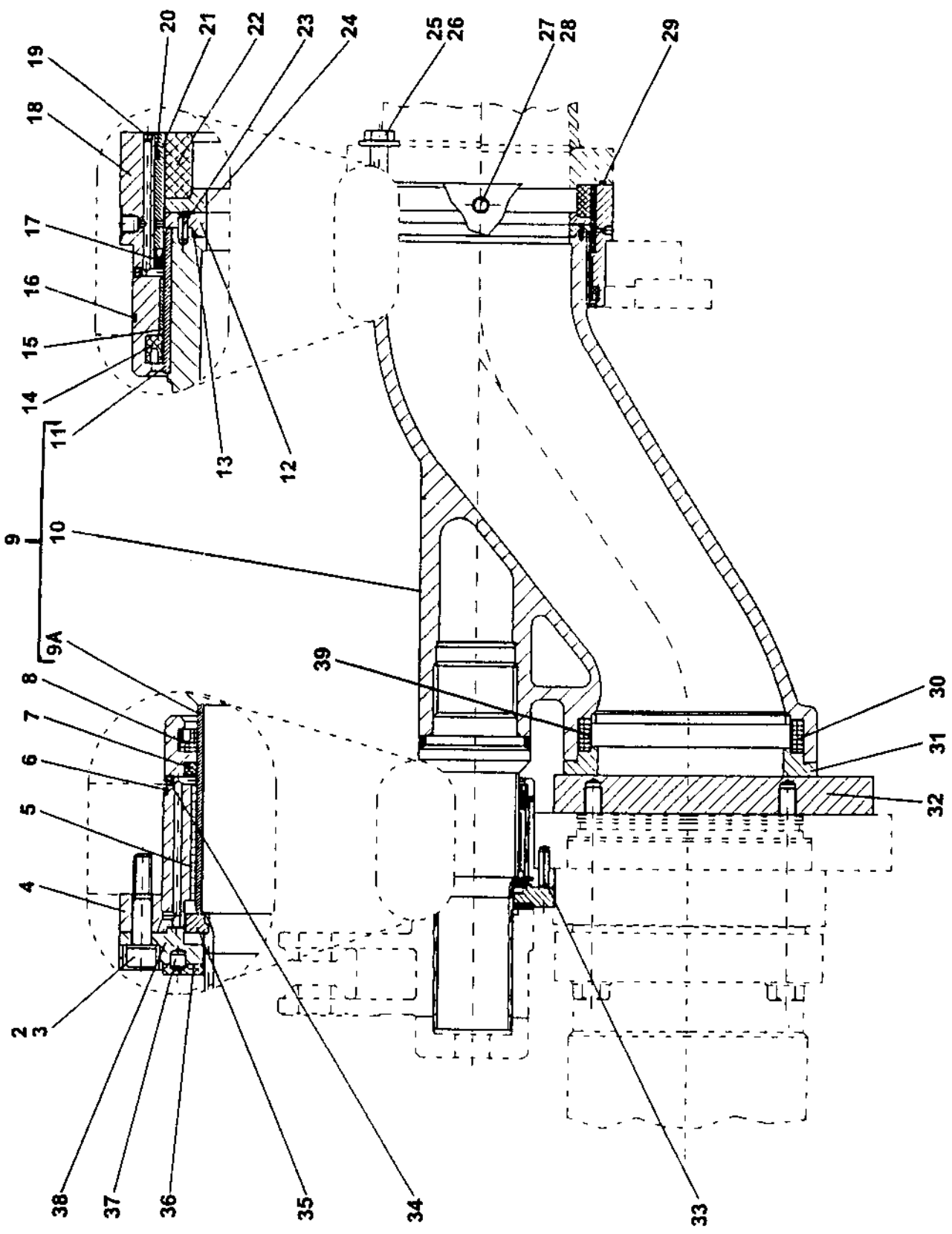
ITEM NO.	REED'S PARTS NO.	DESCRIPTION					QTY
		1	2	3	4	5	
-1	60-01	Installation, Pumping Train (See Group 10, Figure 01 for NHA)					Ref
2	B-174090	• Assembly, Swing Valve (See Group 60, Figure 02 for DET)					1
-3	B-174130	• Assembly, Tilting Drive (See Group 60, Figure 03 for DET)					1
4	B-124017	• Assembly, Concrete Cylinder (See Group 60, Figure 05 for DET)					1
5	B-143000	• Assembly, Water Box (See Group 60, Figure 06 for DET)					1
6	60-06	• Assembly, Hydraulic Drive Cylinder (See Group 60, Figure 07 for DET)					1
7	20-01	• Installation, Hopper (See Group 20, Figure 01 for REF)					Ref
-8	B-183000	• System, Central Lubrication (See Group 20, Figure 02 for REF)					Ref

DASH (-) ITEM NOT ILLUSTRATED

REED

SWING VALVE ASSEMBLY

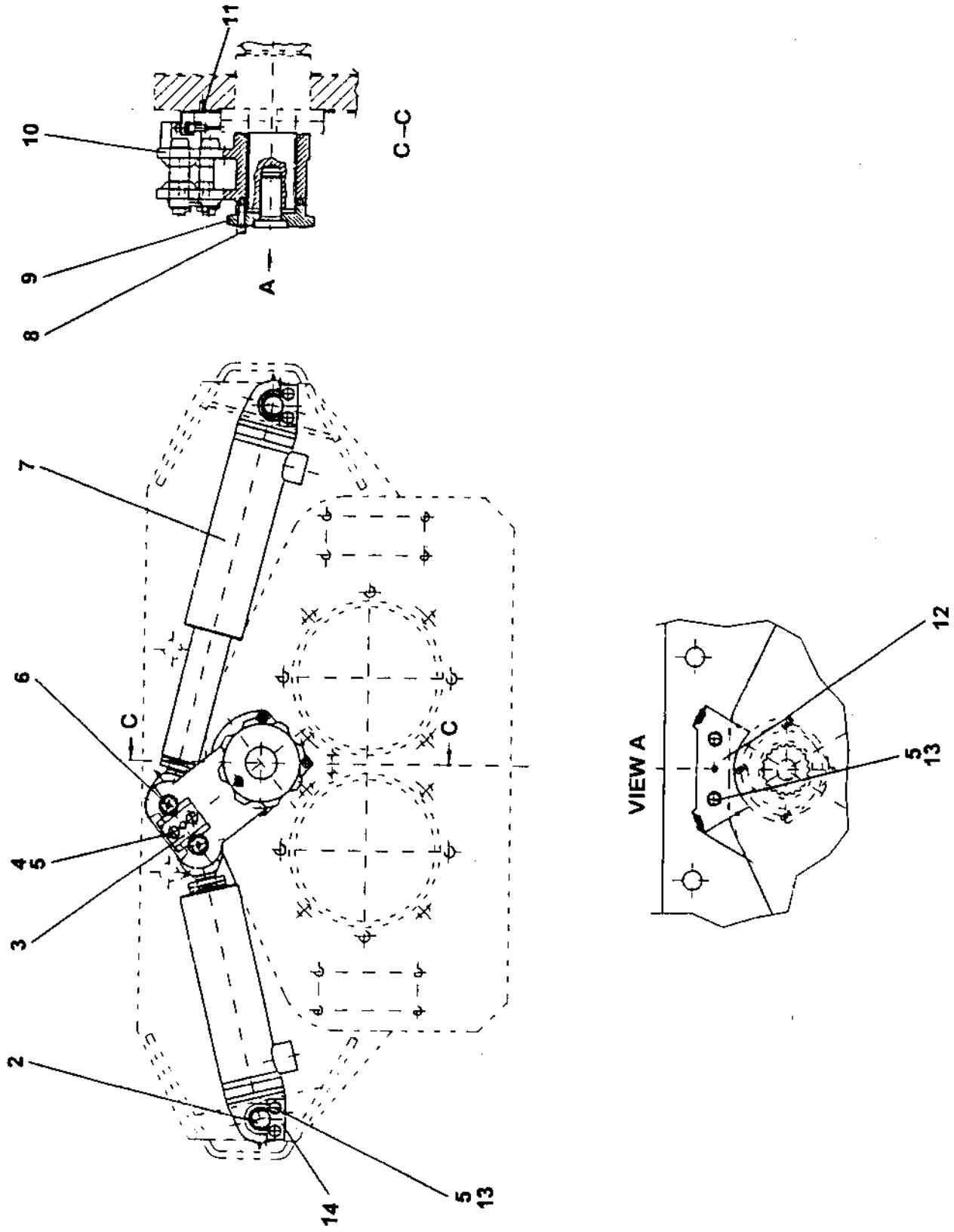
XXT 42
PARTS
GROUP 60
FIGURE 02
PAGE 01



REVISION:

	REED'S PARTS NO.	1 2 3 4 5	DESCRIPTION	QTY
-1	B-174090		Assembly, Swing Valve (See Group 60, Figure 01 for NHA)	Ref
2	W-103151	•	Screw, M12	3
3	W-103113	•	Washer, Spring A12	3
4	B-174024	•	Housing, Small Bearing	1
5	W-100237	•	Bushing	1
6	W-100486	•	O-Ring	2
7	W-100485	•	O-Ring	2
8	B-173077	•	Ring, Groove	1
9	W-105223	•	Assembly, Swing Tube	1
9A	B-172105	• •	Bushing, Small	1
10	B-174089	• •	Valve, Swing DN 200	1
11	B-172107	• •	Bushing, Big	1
12	B-174027	•	Ring, Sliding	1
13	W-100625	•	O-Ring	1
14	B-173078	•	Ring, Groove	1
15	W-100236	•	Ring, Outlet Wear	1
16	W-100481	•	O-Ring	1
17	W-103078	•	Foreseal	1
18	B-174022	•	Housing, Big Bearing	1
19	W-100499	•	Screw, M5 Set	2
20	W-103365	•	O-Ring	1
21	B-174023	•	Ring, Spacer	1
22	W-100262	•	Ring, Outlet Wear	1
23	W-103077	•	Pin, Spring Type Straight	2
24	B-174028	•	Ring, Sliding	1
25	W-101589	•	Screw, M20 Hex	4
26	W-102110	•	Washer, A20	4
27	W-101621	•	Screw, M8 Hex	1
28	W-101269	•	Ring	1
29	W-101588	•	O-Ring	1
30	W-103378	•	Ring, Wear Ring Tension	1
31	B-174087	•	Ring, Wear	1
32	B-174091	•	Plate, Wear	1
33	W-103076	•	Pin, Spring Type Straight	1
34	W-102710	•	Screw, M4 Set	4
35	B-174026	•	Profile	1
36	B-173012	•	Washer, Phenolic Axial Bearing	1
37	W-103080	•	Pin, Cylindrical	1
38	B-174025	•	Flange	1
39	B-174092	•	Protection, Tension Ring	1

DASH (-) ITEM NOT ILLUSTRATED



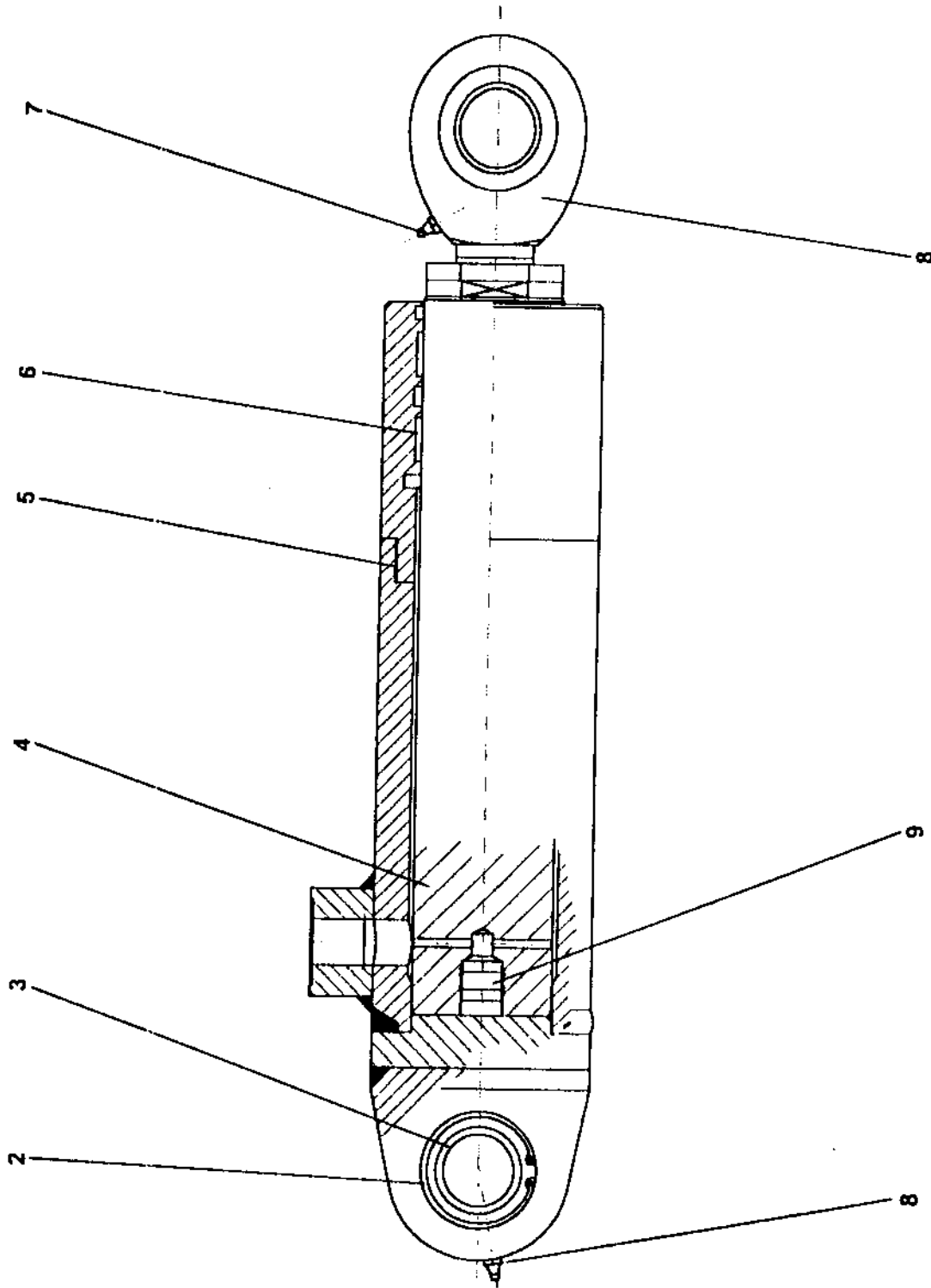
REED**TILTING DRIVE ASSEMBLY****XXT 42**
PARTS
GROUP 60
FIGURE 03
PAGE 02

ITEM NO.	REED'S PARTS NO.	DESCRIPTION					QTY
		1	2	3	4	5	
-1	B-174130	Assembly, Tilting Drive (See Group 60, Figure 01 for NHA)					Ref
2	B-173066	• Pin, Safety					2
3	B-174083	• Plate, Key					1
4	W-102107	• Screw, M12 Hex					2
5	W-102877	• Washer, A12					8
6	B-173019	• Pin					2
7	W-103363	• Assembly, Tilting Cylinder (See Group 60, Figure 04 for DET)					2
8	B-174035	• Screw, M10 Hex (attaching parts)					1
9	B-174032	• Plate, Tension					1
10	B-174031	• Lever, Tilting					1
11	W-102881	• Pin, Spring Type Straight					1
12	B-174084	• Bracket, Sensor					1
13	W-101001	• Bolt, M12					6
14	B-173067	• Plate, Safety Pin					2

DASH (-) ITEM NOT ILLUSTRATED

TILTING CYLINDER ASSEMBLY

XXT 42
PARTS
GROUP 60
FIGURE 04
PAGE 01



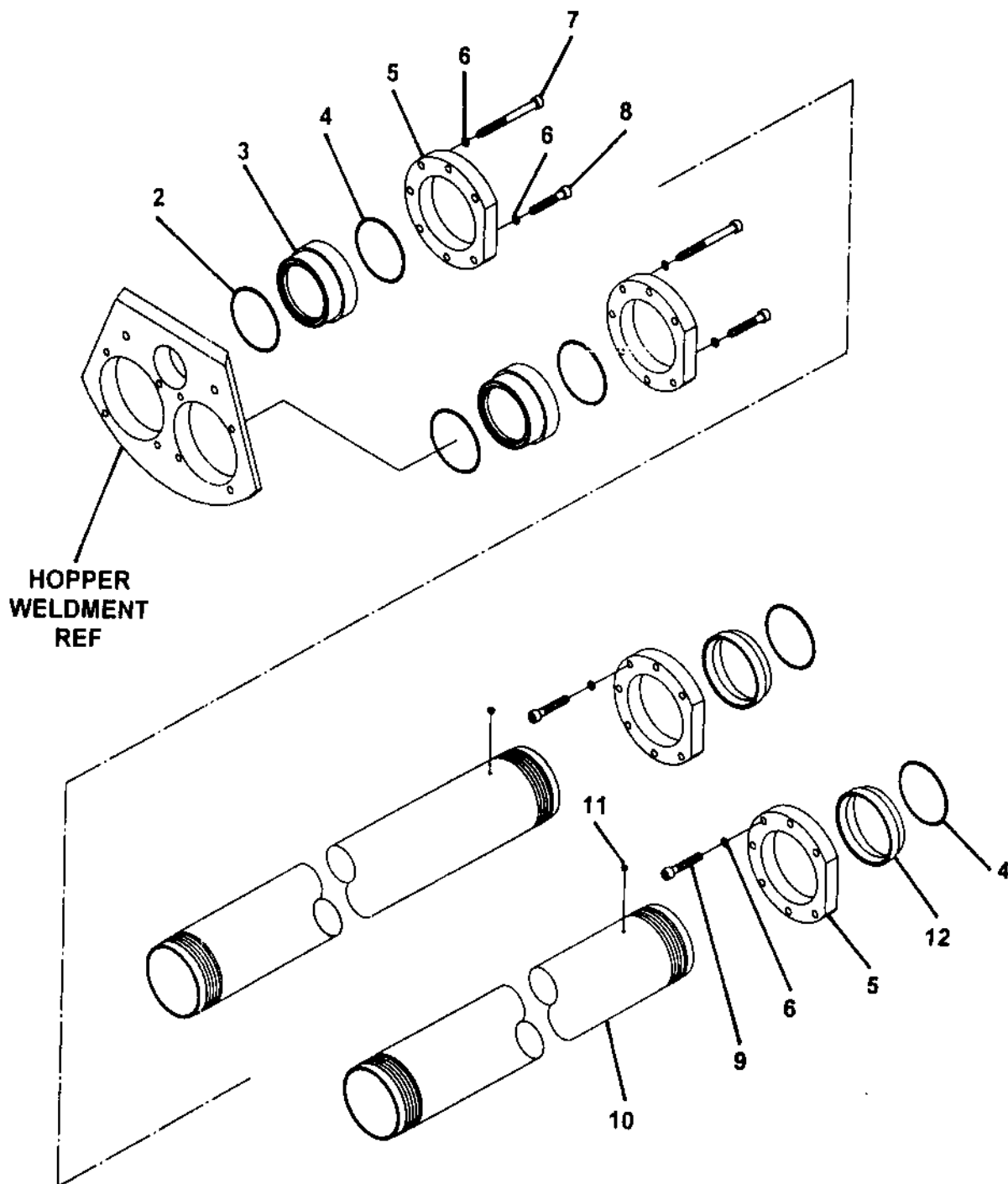


TILTING CYLINDER ASSEMBLY

XXT 42
PARTS
GROUP 60
FIGURE 04
PAGE 02

ITEM NO.	REED'S PARTS NO.	DESCRIPTION					QTY
		1	2	3	4	5	
-1	W-103363	Assembly, Tilting Cylinder (See Group 60, Figure 03 for NHA)					Ref
2	W-103626	• Bearing					1
3	W-101973	• Ring, Retaining					1
4	W-104438	• Rod, Piston					1
5	W-104440	• Pipe, Cylinder					1
6	W-103364	• Kit, Seal					1
7	W-100805	• Nipple, Grease					2
8	W-104437	• Valve, Check					1
9	W-104439	• Head, Rod					1

DASH (-) ITEM NOT ILLUSTRATED



REED**CONCRETE CYLINDER ASSEMBLY****XXT 42**
PARTS
GROUP 60
FIGURE 05
PAGE 02

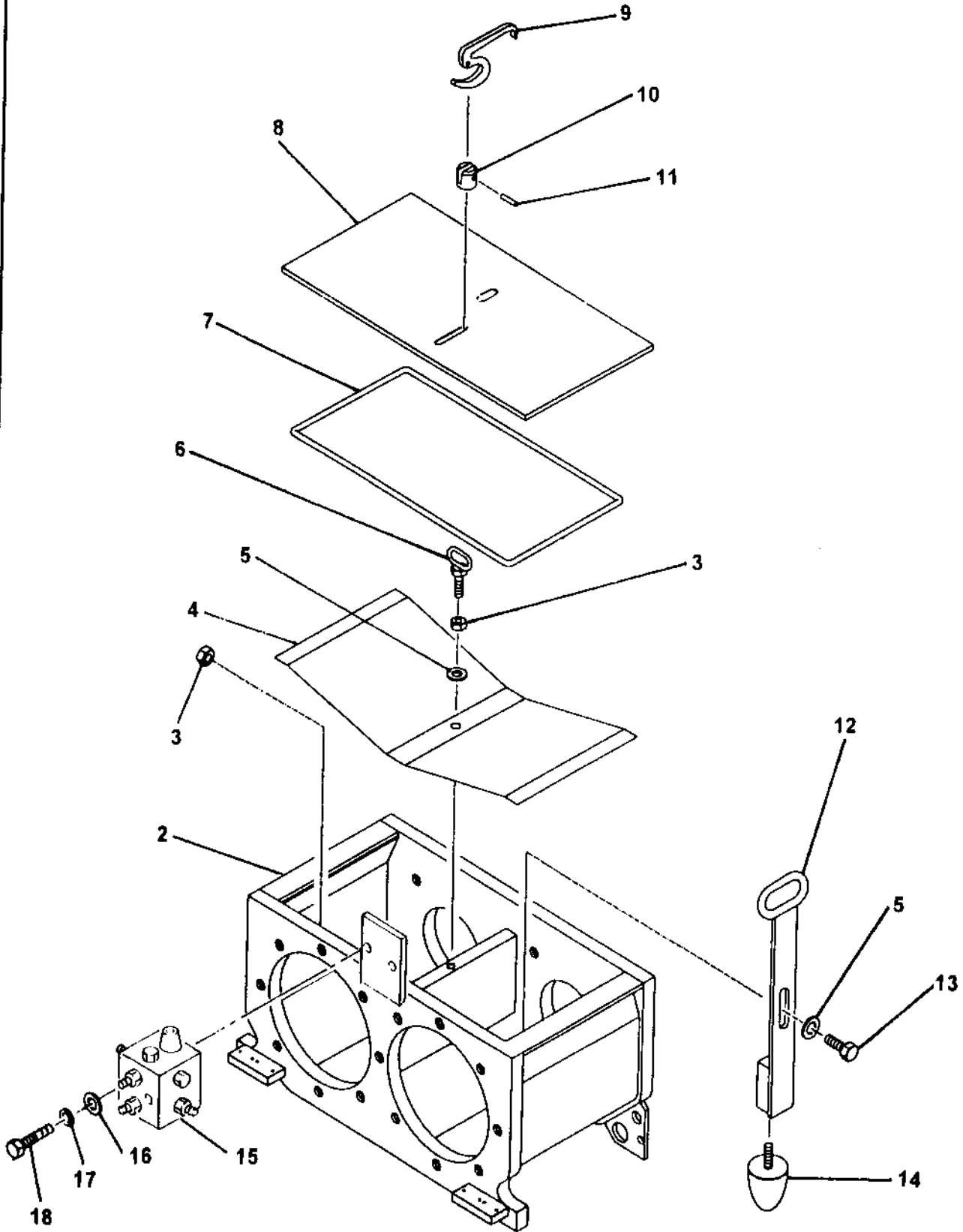
ITEM NO.	REED'S PARTS NO.	DESCRIPTION					QTY
		1	2	3	4	5	
-1	W-103363	Assembly, Tilting Cylinder (See Group 60, Figure 03 for NHA)					Ref
2	W-103626	• Bearing					1
3	W-101973	• Ring, Retaining					1
4	W-104438	• Rod, Piston					1
5	W-104440	• Pipe, Cylinder					1
6	W-103364	• Kit, Seal					1
7	W-100805	• Nipple, Grease					2
8	W-104437	• Valve, Check					1
9	W-104439	• Head, Rod					1

DASH (-) ITEM NOT ILLUSTRATED

REED

WATER BOX ASSEMBLY

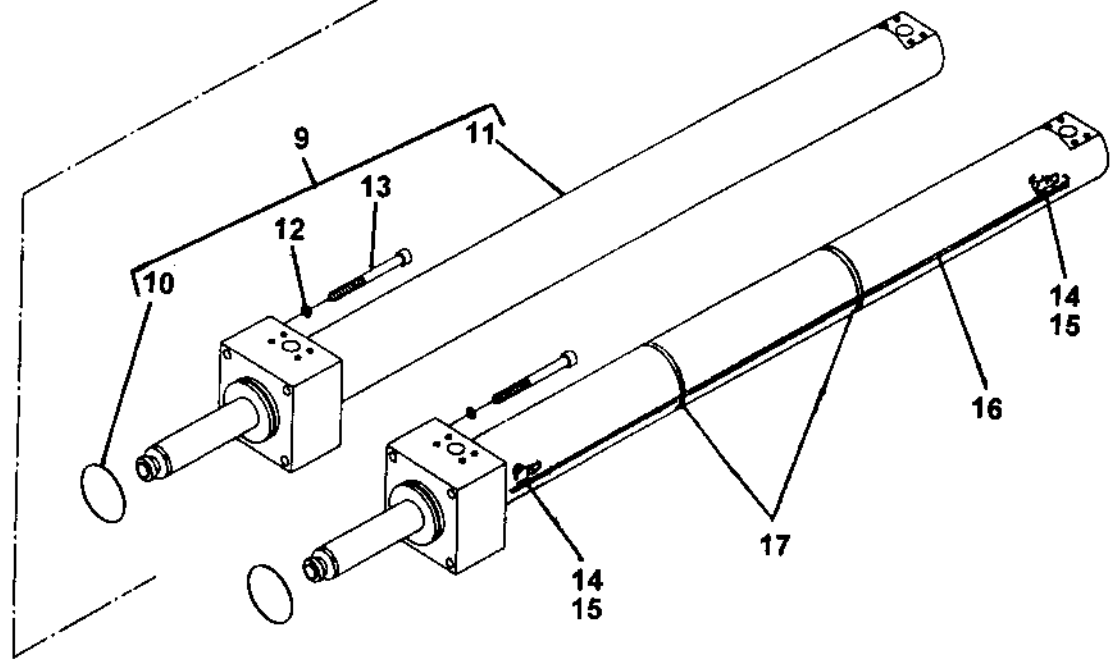
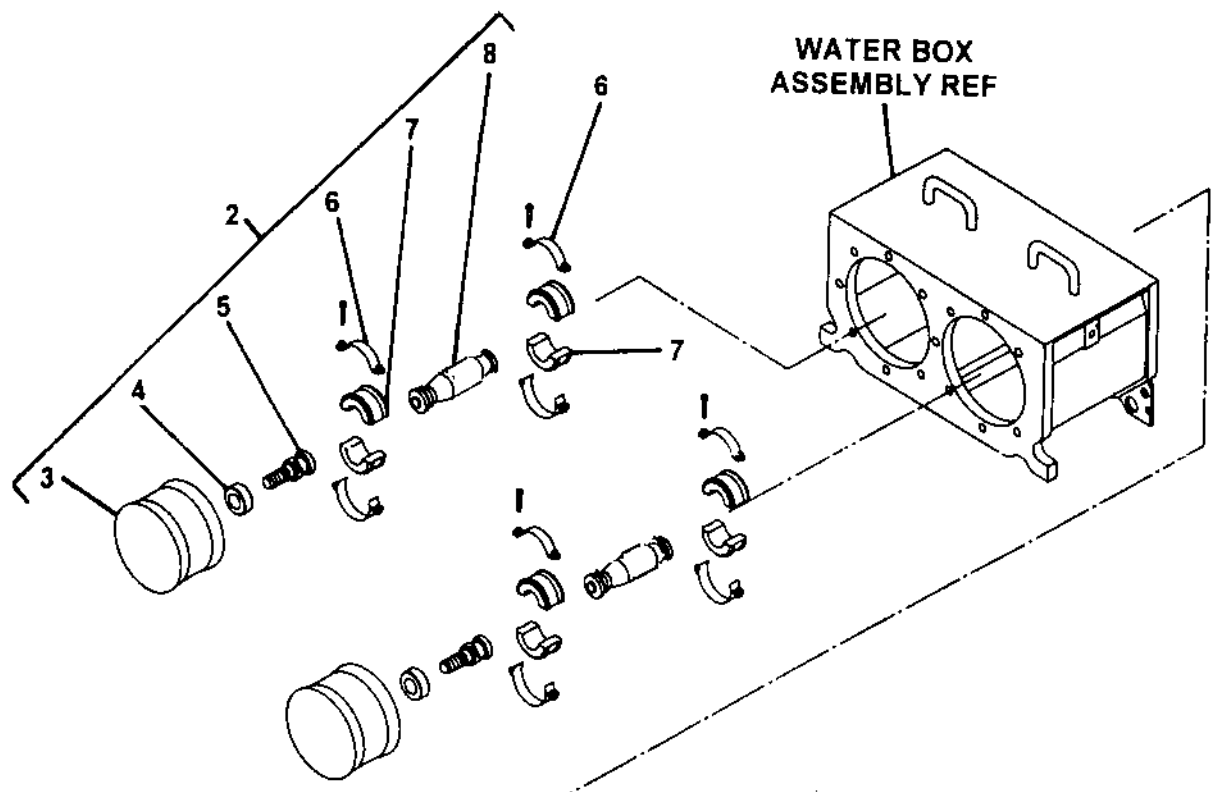
XXT 42
PARTS
GROUP 60
FIGURE 06
PAGE 01



ITEM NO.	REED'S PARTS NO.	DESCRIPTION					QTY
		1	2	3	4	5	
-1	B-143000	Assembly, Water Box (See Group 60, Figure 01 for NHA)					Ref
2	B-143001	• Weldment, Water Box					1
3	W-101557	• Nut, M12 Hex					2
4	B-143020	• Cover, Safety					1
5	W-100504	• Washer					2
6	B-143009	• Bolt, M12 Eye					1
7	W-101831	• Seal, Round Cord					1
8	B-143015	• Cover, Water Box					1
9	B-143007	• Lever					1
10		• Head, Eye Bolt					1
11	W-103387	• Pin, Grooved					1
12	B-143011	• Handle					1
13	W-103688	• Bolt, M12 Hex					1
14	W-102712	• Buffer, Rubber					1
15	W-104402	• Block, Lube					1
16		• Washer, Flat (attaching parts)					2
17		• Washer, Lock (attaching parts)					2
18		• Bolt, Hex (attaching parts)					2

DASH (-) ITEM NOT ILLUSTRATED

HYDRAULIC DRIVE CYLINDER ASSEMBLY

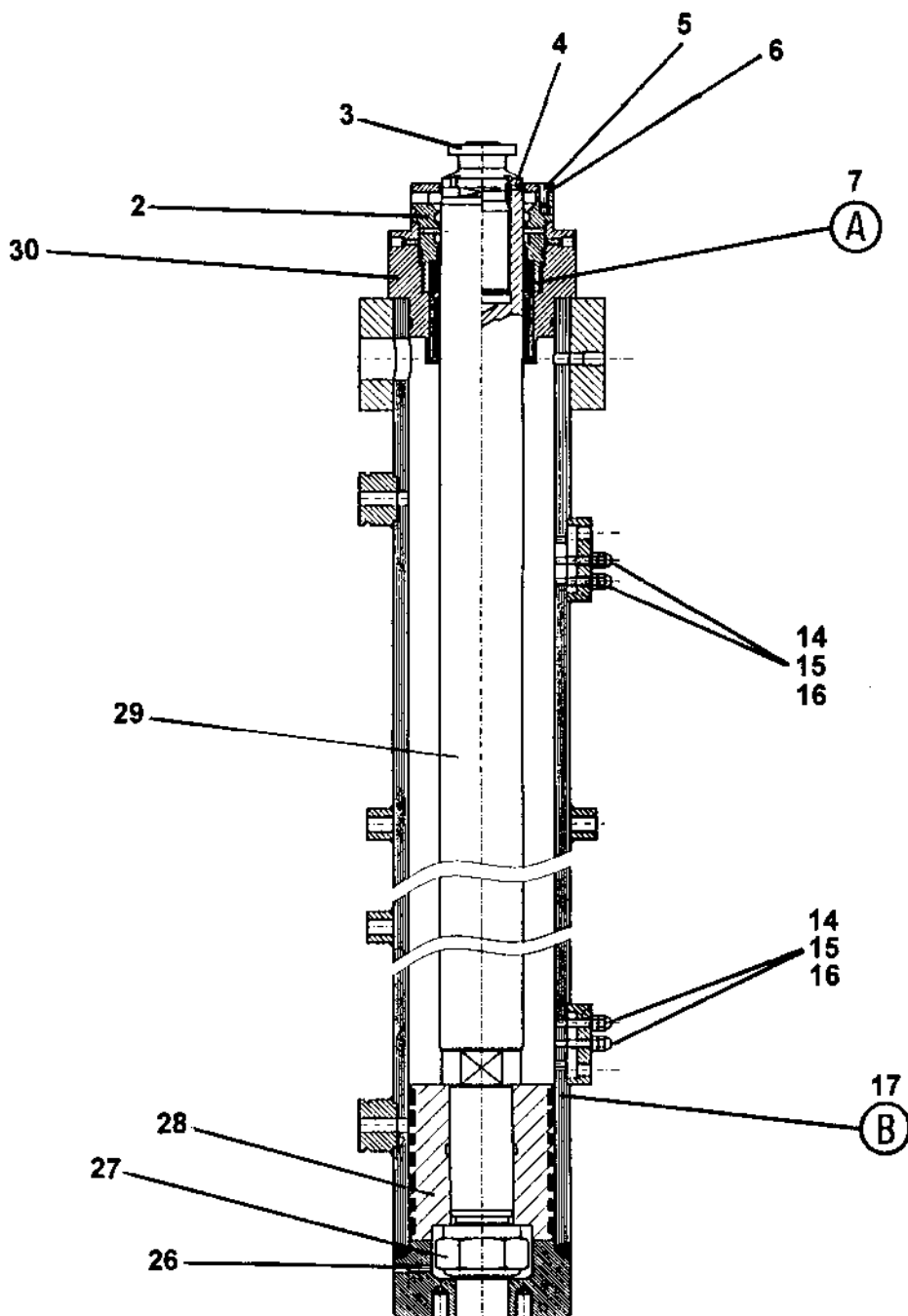


REED**HYDRAULIC DRIVE
CYLINDER ASSEMBLY****XXT 42**
PARTS
GROUP 60
FIGURE 07
PAGE 02

ITEM NO.	REED'S PARTS NO.	DESCRIPTION					QTY
		1	2	3	4	5	
-1	60-06	Assembly, Hydraulic Drive Cylinder (See Group 60, Figure 01 for NHA)					Ref
2	B-133020	• Assembly, Piston Ram					1
3	W-100175	• • Ram, Piston					2
4	B-133019	• • Ring, Protection					2
5	B-133018	• • Bolt, Coupling					2
6	W-101381	• • Clamp, Hose					4
7	B-131004	• • Coupling, Clamp					4
8	B-133003	• • Adapter, Dog Bone					2
9	B-154022	• Assembly, Hydraulic Drive Cylinder					2
10	W-101441	• • O-Ring					2
11	W-154939	• • Sub-Assembly, Hydraulic Drive Cylinder (See Group 60, Figure 08 for DET)					2
12	W-103070	• • Washer (attaching parts)					8
13	W-103828	• • Bolt (attaching parts)					8
14	79285	• Guard, Prox Switch					2
15	78416	• Switch, Prox					2
16	78417	• Cable, Prox Switch					2
17		• Tie-Down (attaching parts)					2

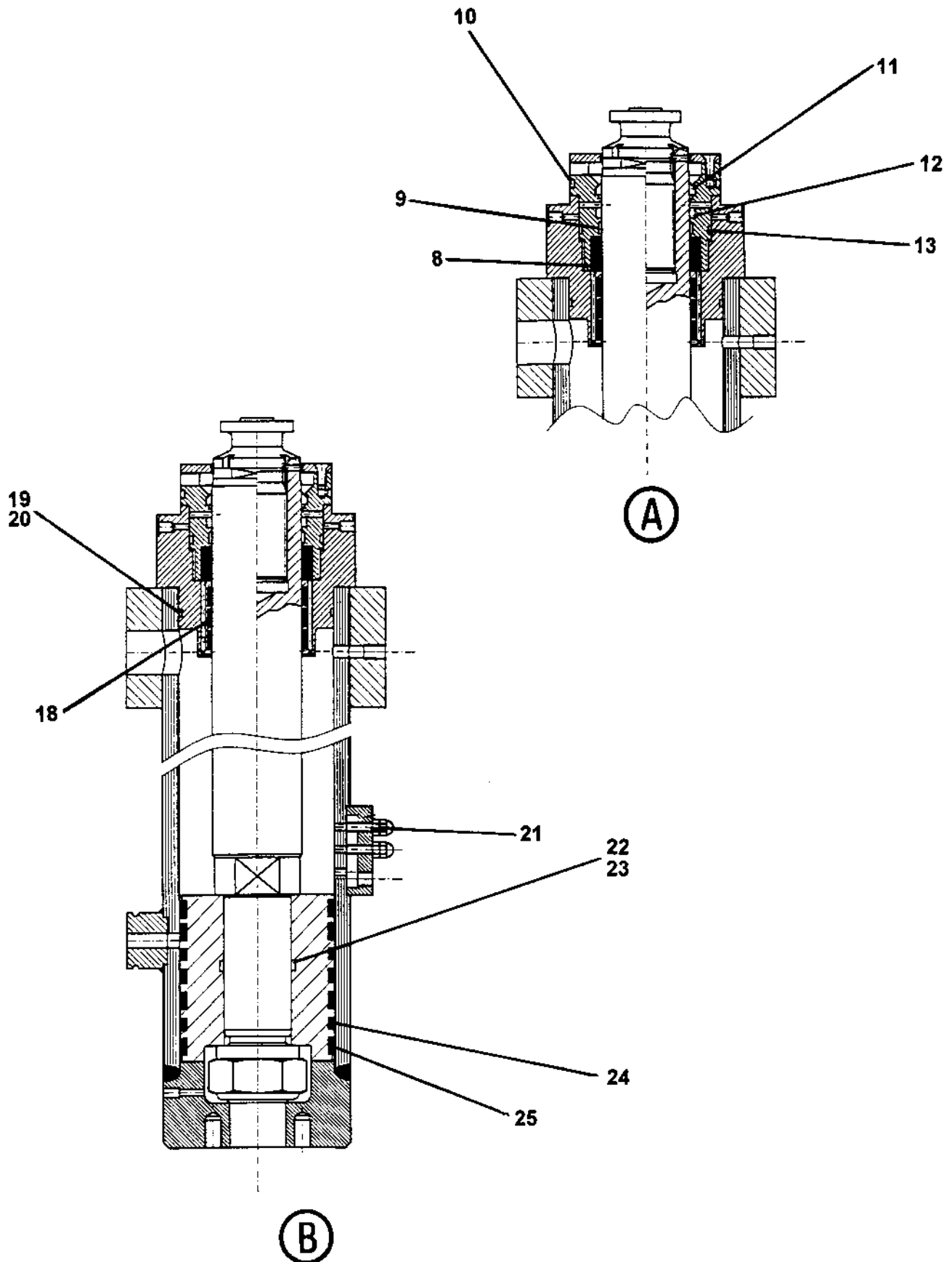
DASH (-) ITEM NOT ILLUSTRATED

HYDRAULIC DRIVE CYLINDER SUB-ASSEMBLY



ITEM NO.	REED'S PARTS NO.	DESCRIPTION					QTY
		1	2	3	4	5	
-1	W-154939	Sub-Assembly, Hydraulic Drive Cylinder (See Group 60, Figure 07 for NHA)					Ref
2	W-104890	• Carrier, Sealing					1
3	W-104146	• Joint, Piston					1
4	W-105739	• Screw, Set					1
5	W-103397	• Screw, M8 Sunk					3
6	W-105726	• Deflector					1
7	W-104690	• Set, Rod Sealing					1
8	W-102584	• • V-Packing					1
9	W-105738	• • Support, Rod					1
10	W-105731	• • O-Ring					1
11	W-100259	• • Wiper					1
12	W-105729	• • Wiper					1
13	W-105732	• • Sealing					1
14	W-105740	• Screw, M8 Set					4
15	W-102880	• Nut, hex					4
16	W-104933	• Nut, Cap					4
17	W-105742	• Set, Sealing					1
18	W-105730	• • Support, Rod					3
19	W-105733	• • Ring, Back up					1
20	W-105734	• • O-Ring					1
21	W-101269	• • Ring, Unit					8
22	W-105736	• • Ring, Back Up					2
23	W-105737	• • O-Ring					1
24	W-105049	• • Ring, Piston					4
25	W-105735	• • Ring, Guide					3
26	W-100528	• Screw, Rocking					3
27	W-105728	• Nut, Piston					1
28	W-105727	• Piston					1
29	W-105724	• Rod, Piston					1
30	W-105725	• Piece, Guard					1

DASH (-) ITEM NOT ILLUSTRATED



ITEM NO.	REED'S PARTS NO.	DESCRIPTION					QTY
		1	2	3	4	5	
-1	W-154939	Sub-Assembly, Hydraulic Drive Cylinder (See Group 60, Figure 07 for NHA)					Ref
2	W-104890	• Carrier, Sealing					1
3	W-104146	• Joint, Piston					1
4	W-105739	• Screw, Set					1
5	W-103397	• Screw, M8 Sunk					3
6	W-105726	• Deflector					1
7	W-104690	• Set, Rod Sealing					1
8	W-102584	• • V-Packing					1
9	W-105738	• • Support, Rod					1
10	W-105731	• • O-Ring					1
11	W-100259	• • Wiper					1
12	W-105729	• • Wiper					1
13	W-105732	• • Sealing					1
14	W-105740	• Screw, M8 Set					4
15	W-102880	• Nut, hex					4
16	W-104933	• Nut, Cap					4
17	W-105742	• Set, Sealing					1
18	W-105730	• • Support, Rod					3
19	W-105733	• • Ring, Back up					1
20	W-105734	• • O-Ring					1
21	W-101269	• • Ring, Unit					8
22	W-105736	• • Ring, Back Up					2
23	W-105737	• • O-Ring					1
24	W-105049	• • Ring, Piston					4
25	W-105735	• • Ring, Guide					3
26	W-100528	• Screw, Rocking					3
27	W-105728	• Nut, Piston					1
28	W-105727	• Piston					1
29	W-105724	• Rod, Piston					1
30	W-105725	• Piece, Guard					1

DASH (-) ITEM NOT ILLUSTRATED



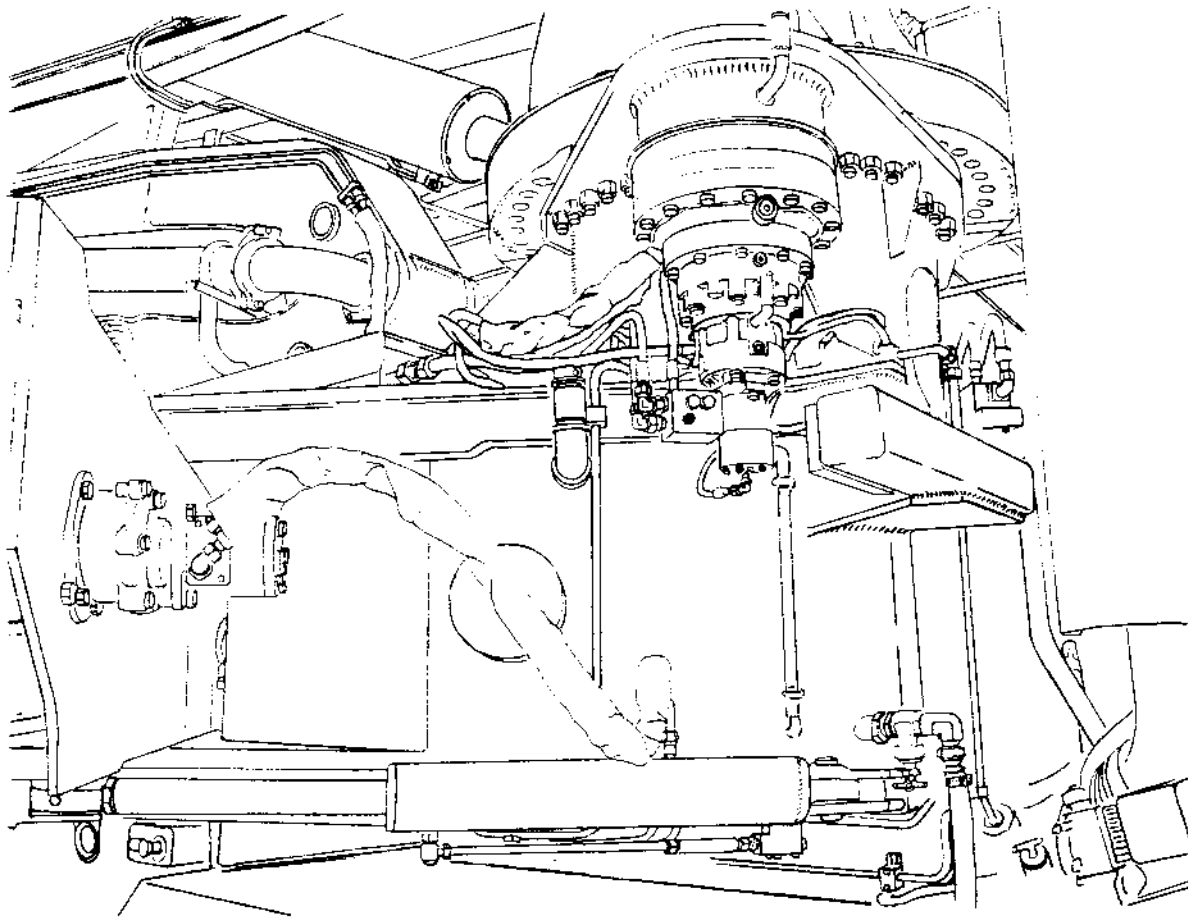
MODEL *XXT 42* TRUCK MOUNTED
CONCRETE BOOM PUMP
ILLUSTRATED PARTS MANUAL

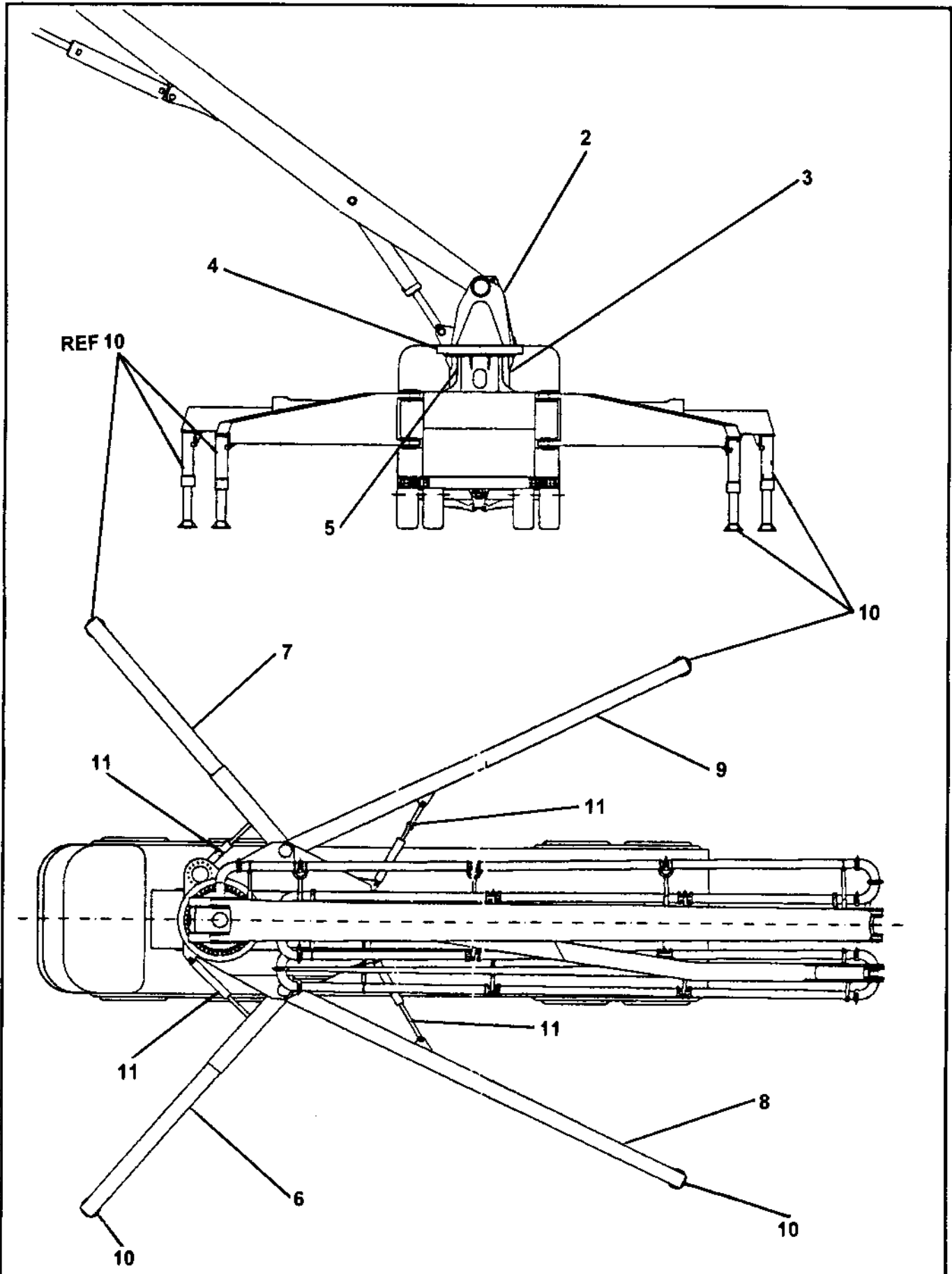
XXT 42
PARTS
GROUP 60
FIGURE 09
PAGE 01

THIS PAGE INTENTIONALLY LEFT BLANK.

REED TRUCK MOUNTED CONCRETE BOOM PUMP MODEL XXT 42 ILLUSTRATED PARTS MANUAL GROUP 70 FRAME AND SUPPORT INSTALLATION CONTAINS THE FOLLOWING FIGURES:

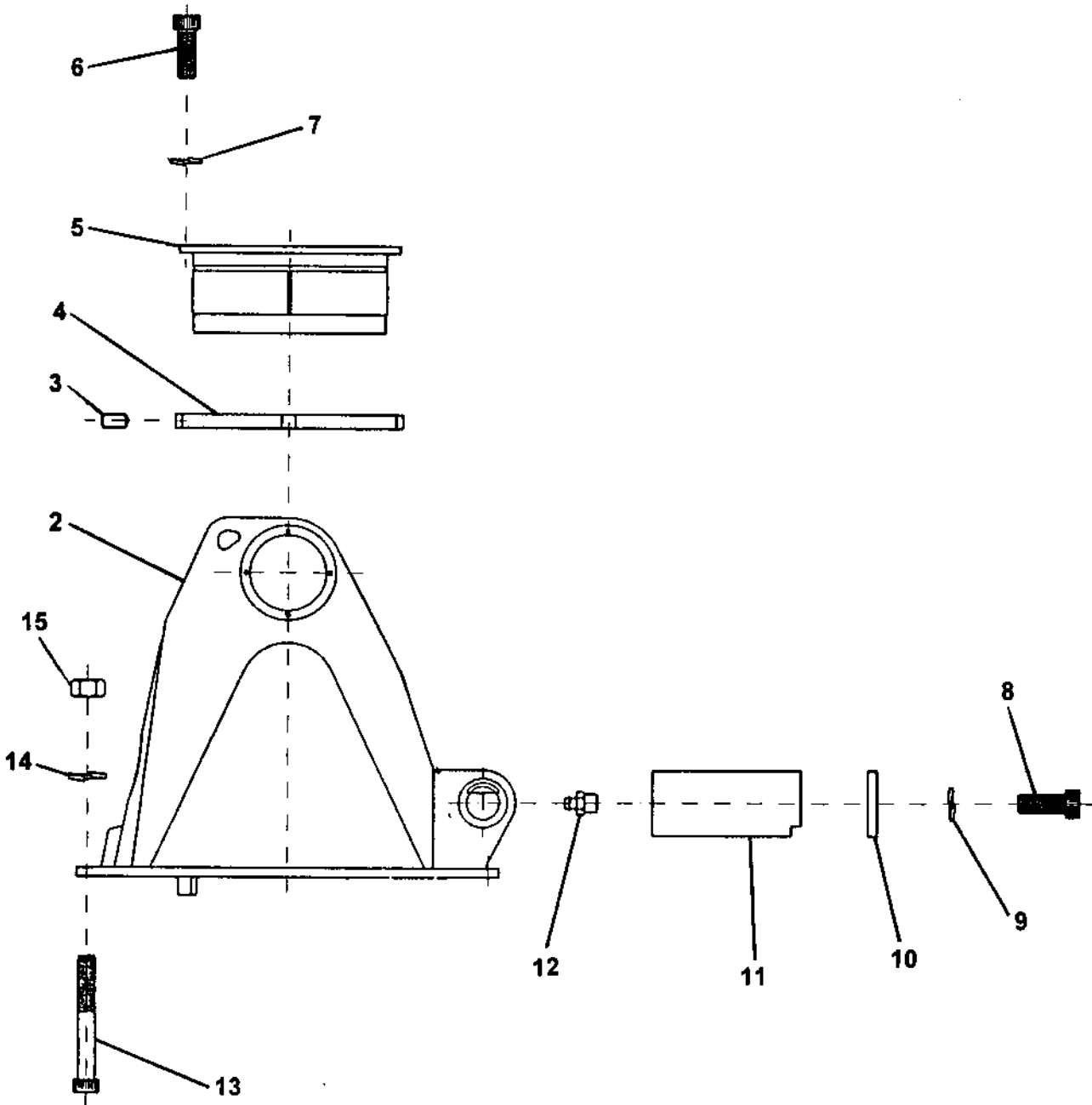
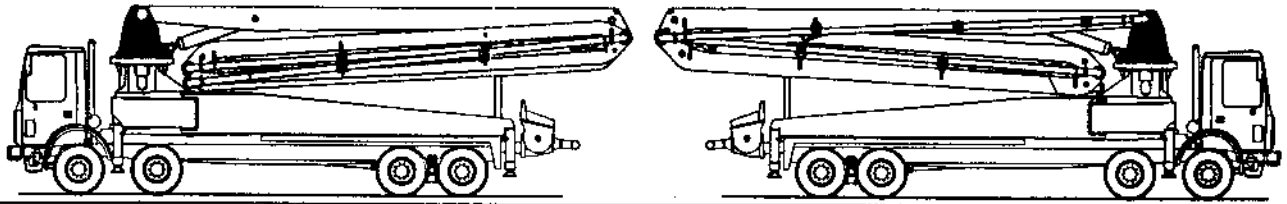
- FIGURE 00** TABLE OF CONTENTS
- FIGURE 01** FRAME AND SUPPORT INSTALLATION
- FIGURE 02** TURRET ASSEMBLY
- FIGURE 03** MOTOR AND REDUCTION ASSEMBLY
- FIGURE 04** ROTATION UNIT ASSEMBLY
- FIGURE 05** SUPPORT FRAME STABILIZERS ASSEMBLY
- FIGURE 06** FRONT LEFT STABILIZERS TELESCOPIC LEG ASSEMBLY
- FIGURE 07** FRONT RIGHT STABILIZERS TELESCOPIC LEG ASSEMBLY
- FIGURE 08** REAR LEFT SWING OUT LEG ASSEMBLY
- FIGURE 09** REAR RIGHT SWING OUT LEG ASSEMBLY
- FIGURE 10** STABILIZERS VERTICAL JACK CYLINDER ASSEMBLY
- FIGURE 11** SWING OUT CYLINDER ASSEMBLY





ITEM NO.	REED'S PARTS NO.	DESCRIPTION					QTY
		1	2	3	4	5	
-1	70-01	Installation, Frame And Support (See Group 10, Figure 01 for NHA)					Ref
2	C-2F1	• Assembly, Turret (See Group 70, Figure 02 for DET)					1
3	C-2G1	• Assembly, Motor And Reduction (See Group 70, Figure 03 for DET)					1
4	C-2G2	• Assembly, Rotation Unit (See Group 70, Figure 04 for DET)					1
5	C-2H1	• Assembly, Support Frame Stabilizers (See Group 70, Figure 05 for DET)					1
6	C-2K1-L	• Assembly, Front Left Side Stabilizers Telescopic Leg (See Group 70, Figure 06 for DET)					1
7	C-2K1-R	• Assembly, Front Right Side Stabilizers Telescopic Leg (See Group 70, Figure 07 for DET)					1
8	C-2M1-L	• Assembly, Rear Left Side Swing Out Leg (See Group 70, Figure 08 for DET)					1
9	C-2M1-R	• Assembly, Rear Right Side Swing Out Leg (See Group 70, Figure 09 for DET)					1
10	C-2L5	• Assembly, Stabilizer Vertical Jack Cylinder (See Group 70, Figure 10 for DET)					4
11	C-2M3	• Assembly, Swing Out Cylinder (See Group 70, Figure 11 for DET)					4

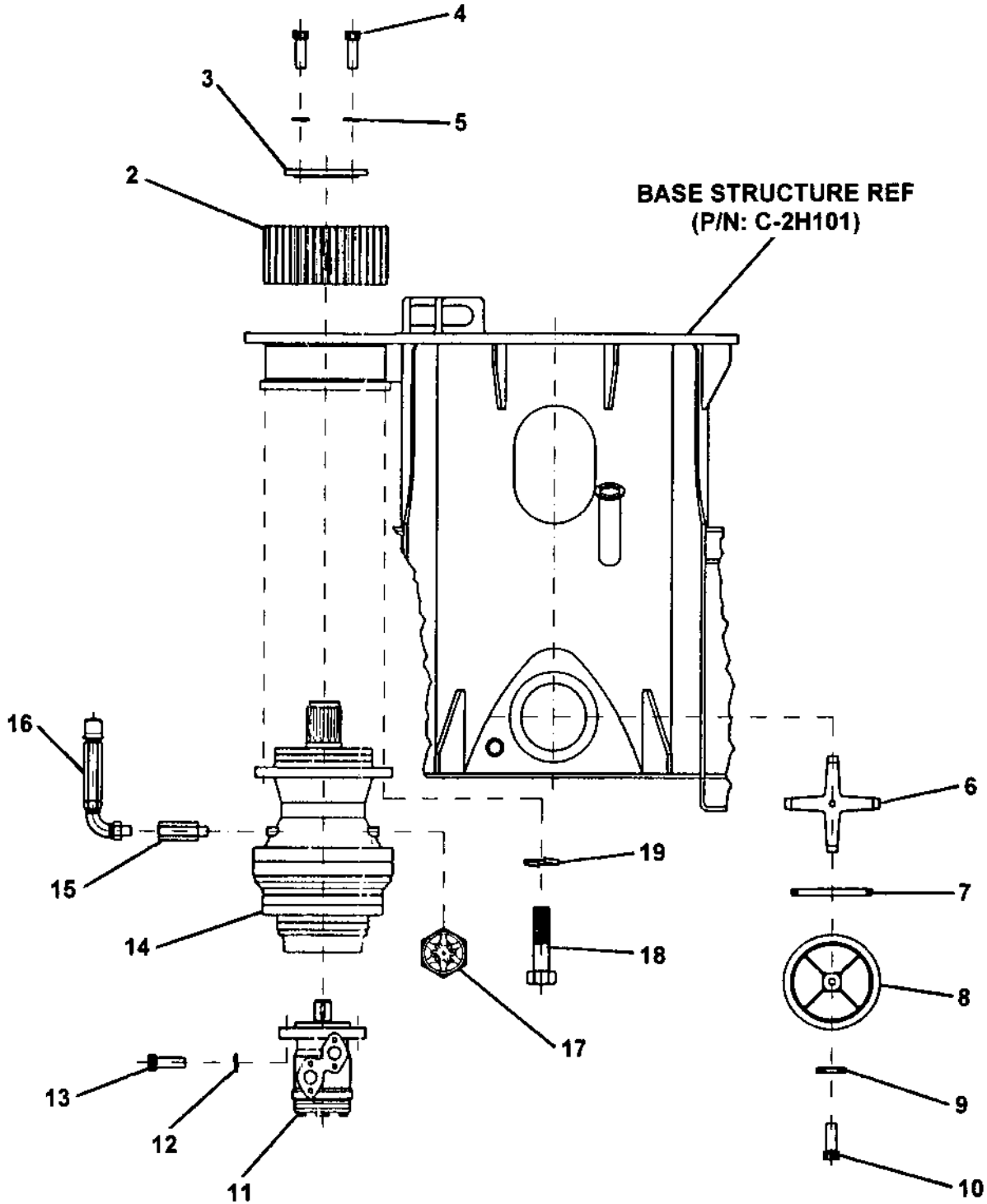
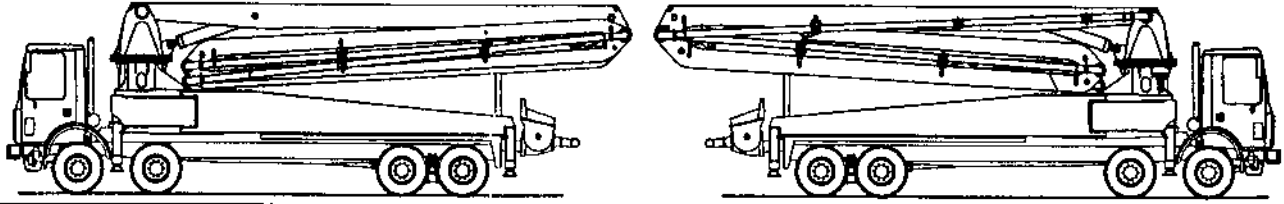
DASH (-) ITEM NOT ILLUSTRATED



REED**TURRET ASSEMBLY****XXT 42
PARTS
GROUP 70
FIGURE 02
PAGE 02**

ITEM NO.	REED'S PARTS NO.	DESCRIPTION					QTY
		1	2	3	4	5	
-1	C-2F1	Assembly, Turret (See Group 70, Figure 01 for NHA)					Ref
2	C-2F101	• Head, Rotating					1
3	C-VG122.061010	• Screw					4
4	C-GV228.2015	• Ring, Threaded					2
5	C-2P120	• Pin					2
6	C-VC110.142040	• Screw					8
7	C-UE110.14	• Washer, Elastic					8
8	C-VC110.101525	• Screw					1
9	C-UE110.10	• Washer, Elastic					1
10	C-UD080.1108	• Washer, Pin Locking					1
11	C-2P119	• Pin					1
12	C-VI131.1010	• Nipple, Grease					1
13	C-VC130.2730C6	• Screw					48
14	C-UE110.27	• Washer					48
15	C-VD113.2730	• Nut					48

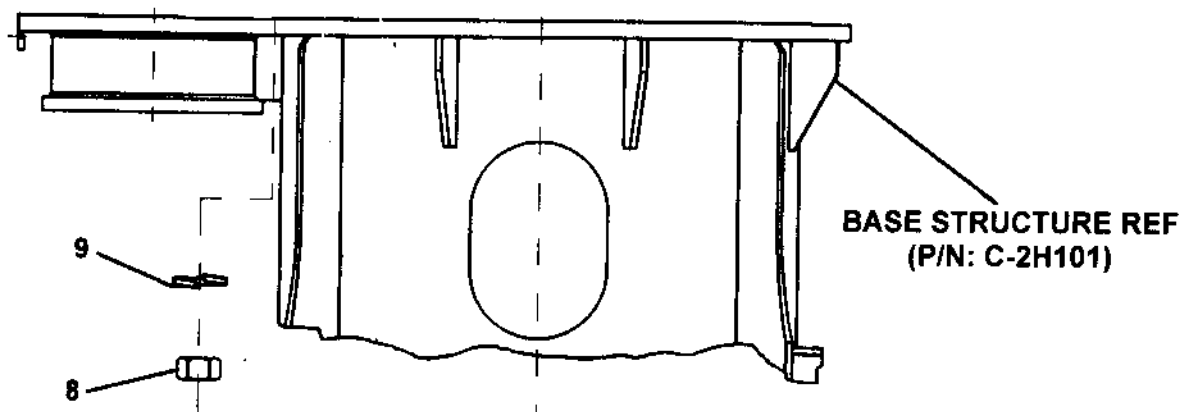
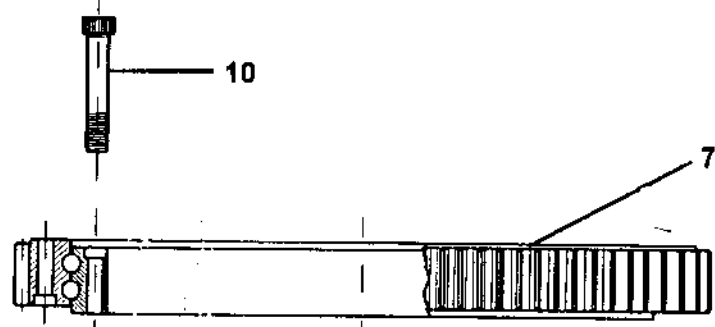
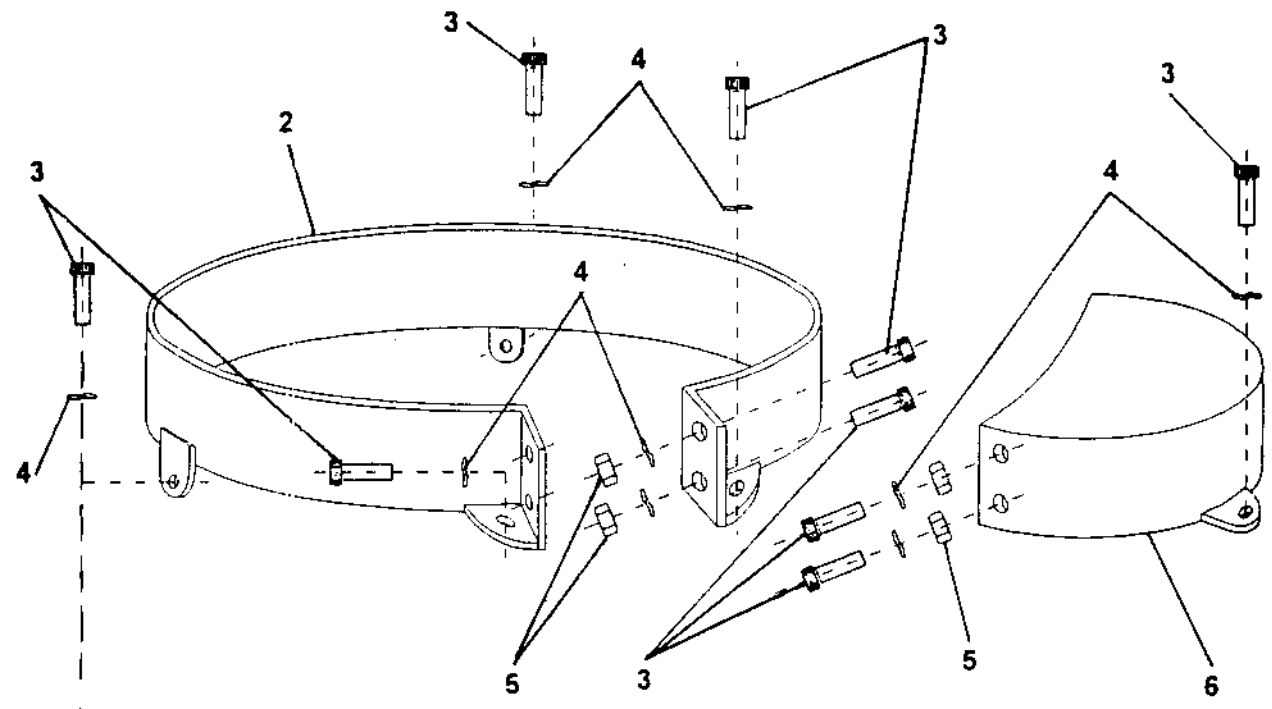
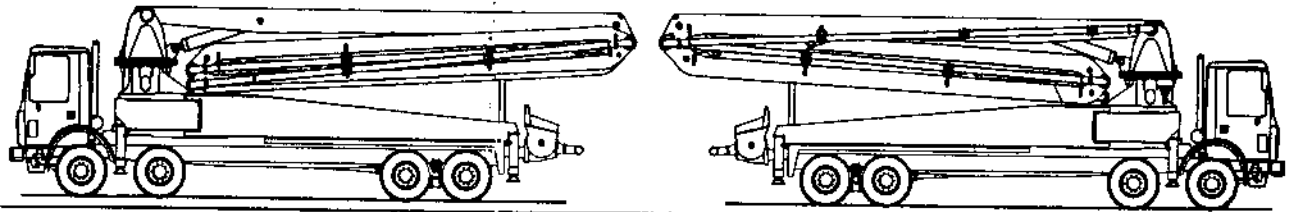
DASH (-) ITEM NOT ILLUSTRATED



ITEM NO.	REED'S PARTS NO.	DESCRIPTION					QTY
		1	2	3	4	5	
-1	C-2G1	Assembly, Motor And Reduction (See Group 70, Figure 01 for NHA)					Ref
2	C-RP100.21415	• Pinion					1
3	C-RP100.2	• Washer, Pinion					1
4	C-VC110.101530	• Screw					3
5	C-UE110.10	• Washer, Elastic					3
6	C-DT301	• Support, Cover					1
7	C-AO120.371	• Gasket, Seal					1
8	C-DT300	• Cover					1
9	C-AB110.016	• Ring-Bonded					1
10	C-VC110.162040	• Screw					1
11	C-MI200.160	• Assembly, Hydraulic Motor					1
12	C-UE110.12	• Washer, Elastic					2
13	C-VC110.1275	• Screw					2
14	C-RE100.23250	• Unit, Reduction					1
15	C-NP020.040MF	• Fitting					1
16	C-FS020	• Filter, Air Hole					1
17	C-LL301	• Level, Oil					1
18	C-VC110.1620C5	• Screw					15
19	C-UE110.16	• Washer, Elastic					15

DASH (-) ITEM NOT ILLUSTRATED

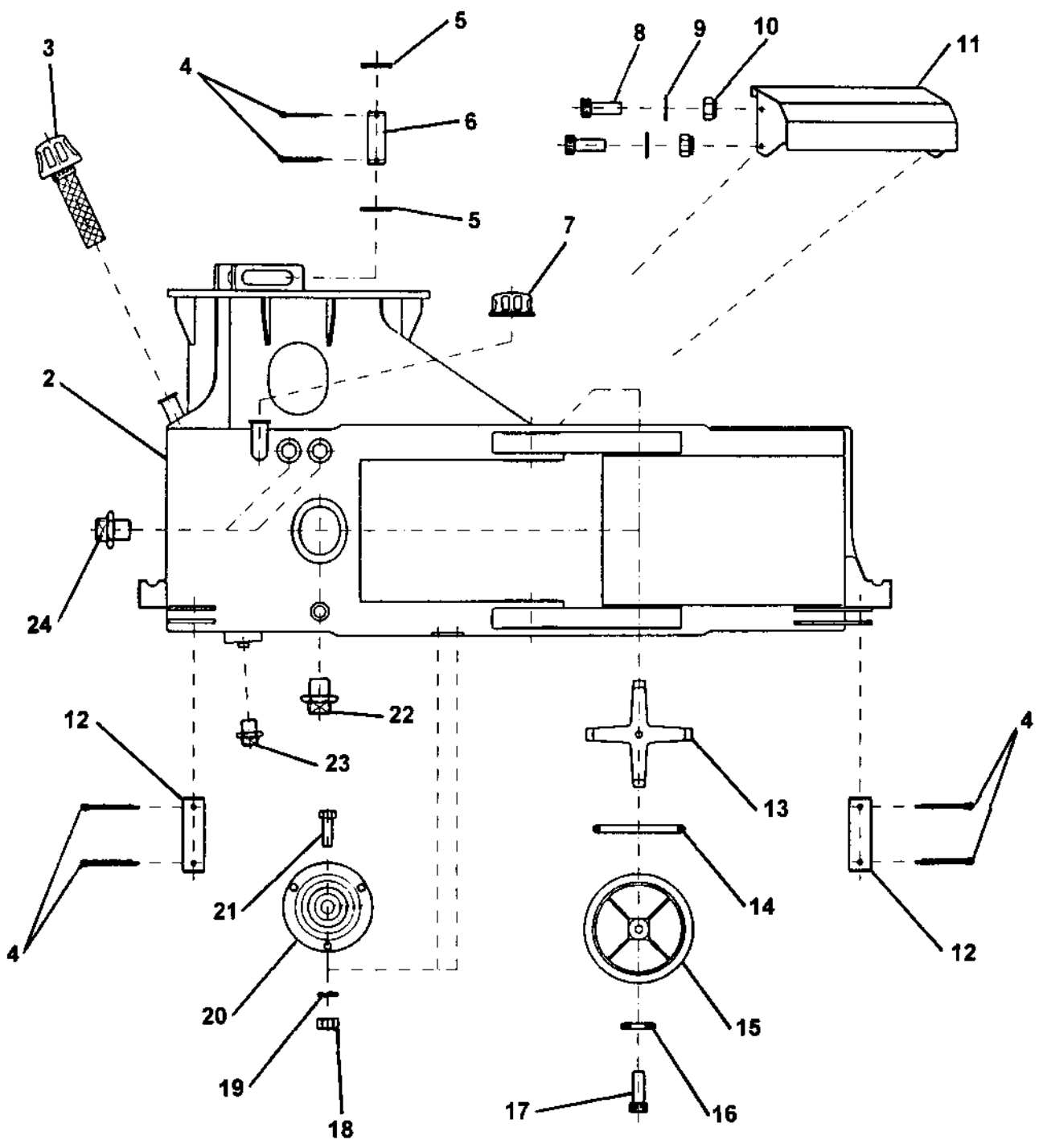
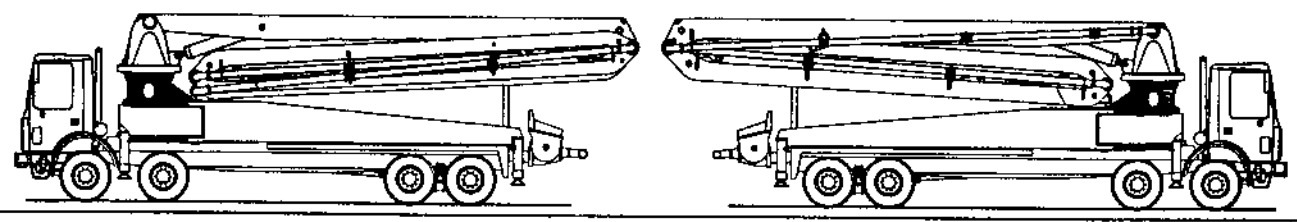
ROTATION UNIT ASSEMBLY



ITEM NO.	REED'S PARTS NO.	DESCRIPTION					QTY
		1	2	3	4	5	
-1	C-2G2	Assembly, Rotation Unit (See Group 70, Figure 01 for NHA)					Ref
2	C-2G202	• Protection, Rotating					1
3	C-VC110.081225	• Screw					9
4	C-UE110.08	• Washer, Elastic (attaching parts)					9
5	C-VD111.0812	• Nut					4
6	C-2G203	• Protection, Pinion					1
7	C-CB112.1344	• Bearing, Rotation					1
8	C-VD113.2730	• Nut (attaching parts)					48
9	C-UE110.27	• Washer (attaching parts)					48
10	C-VC130.2730C6	• Screw (attaching parts)					48

DASH (-) ITEM NOT ILLUSTRATED

SUPPORT FRAME STABILIZERS ASSEMBLY



ITEM NO.	REED'S PARTS NO.	DESCRIPTION					QTY
		1	2	3	4	5	
-1	C-2H1	Assembly, Support Frame Stabilizers (See Group 70, Figure 01 for NHA)					Ref
2	C-2H101	• Structure, Base					1
3	C-DT200	• Plug, Screw for Hydraulic Oil Tank					1
4	C-VS110.08070	• Pin, Split					6
5	C-2G205	• Washer					2
6	C-2P202	• Pin					1
7	C-DT121	• Plug, Screw for Water Tank					1
8	C-VC110.081225	• Screw					4
9	C-UP110.08	• Washer					4
10	C-VD221.0812	• Nut, Self Locking					4
11	C-1H106	• Cover, Distributor					1
12	C-2P207	• Pin					2
13	C-DT301	• Support, Cover					2
14	C-A0120.371	• Gasket, Seal					2
15	C-DT300	• Cover					2
16	C-AB110.016	• Ring-Bonded					2
17	C-VC110.162040	• Screw					2
18	C-VD111.0407	• Nut					3
19	C-UE110.04	• Washer, Elastic					3
20	C-LL401	• Level					1
21	C-VE110.040715	• Screw					3
22	C-DT109	• Plug, Screw					2
23	C-DT105	• Plug, Screw					3
24	C-DT106	• Plug, Screw					1

DASH (-) ITEM NOT ILLUSTRATED