

ITEM NO.	REED'S PARTS NO.	DESCRIPTION					QTY
		1	2	3	4	5	
-1	10-02	Assembly, Decal (See Group 10, Figure 01 for NHA)					Ref
2	800442	• Decal, REED , 6 Inch Black					3
3	C-4V107	• Plate, Danger Of Falling Object					1
4	C-4V106	• Plate, Never Use As Crane					1
5	C-4V105	• Plate, Death Hazard					1
6	801069	• Decal, REED , 12 Inch White					2
7	C-4V120	• Plate, Hydraulic Distributor					1
8	C-9V111	• Decal, Right Side Stabilizers					1
9	C-9V112	• Decal, Left Side Stabilizers					1
10		• Decal, XXT , 5 Inch Optional Color					2
11		• Decal, 32 , 8 Inch Optional Color					2
12		• Decal, REED , 8 Inch Optional Color					2
13	801441	• Decal, XXT Range					4
14	C-4V113	• Decal, A Letter Adhesive					1
15	C-4V115	• Decal, C Letter Adhesive					1
16	C-4V116	• Decal, D Letter Adhesive					1
17	C-4V114	• Decal, B Letter Adhesive					1
-18	800766	• Kit, XXT 42 Decal					1
19	800051	•• Nameplate, PTO					1
20	800059	•• Plate, PTO Operation					1
21	800034	•• Decal, Oil Level					2
22	800033	•• Decal, Water					1
23	800915	•• Decal, Danger, Stay Clear					3
24	800919	•• Decal, Warning, Stand Clear of Outriggers when activating					4
-25	800920	•• Decal, Warning, Clear Area Before Activating Outriggers					2
26	B-513013	•• Decal, Control Box Panel					1
27	801113	•• Decal, Gauge					1
28		•• Decal, A B					1
29	800926	•• Decal, Warning, Do Not Operate This Machine without					2
30	800929A	•• Decal, Warning					1
31	800925	•• Decal, Warning, Do Not Operate This Machine without					1
32	800930	•• Decal, ACPA Hand Signals					1
33	800913	•• Decal, Danger, Electrocution Hazard					1
34	800875	•• Nameplate, Agitator / Water					1
35	800918	•• Decal, Warning, Do Not Stand on Hopper Grate					2
36	800917	•• Decal, Warning, Keep Hand Out of Hopper and Valve					2
37	800924	•• Decal, Warning, This Machine is Remote Controlled and					1
38	800931	•• Decal, ACPA Member					1
39	800922	•• Decal, Warning, Before Opening a Blocked Pipeline,					1
40	800923	•• Decal, Warning, Use Retaining Pins in all Delivery					1
41	800928	•• Decal, Warning, Total Weight of all Hanging Hoses,					1
42	800927	•• Decal, Warning, Do Not Use the Boom as a Crane					1
43	800921	•• Decal, Warning, Do Not Operate at Pressures Exceeding					1
-44	800914	•• Decal, Danger, Electrocution Hazard					1
-45	800916	•• Decal, Warning, Keep Hand Out of Water Box					1
46	75009	•• Nameplate, REED , Serial No.					1

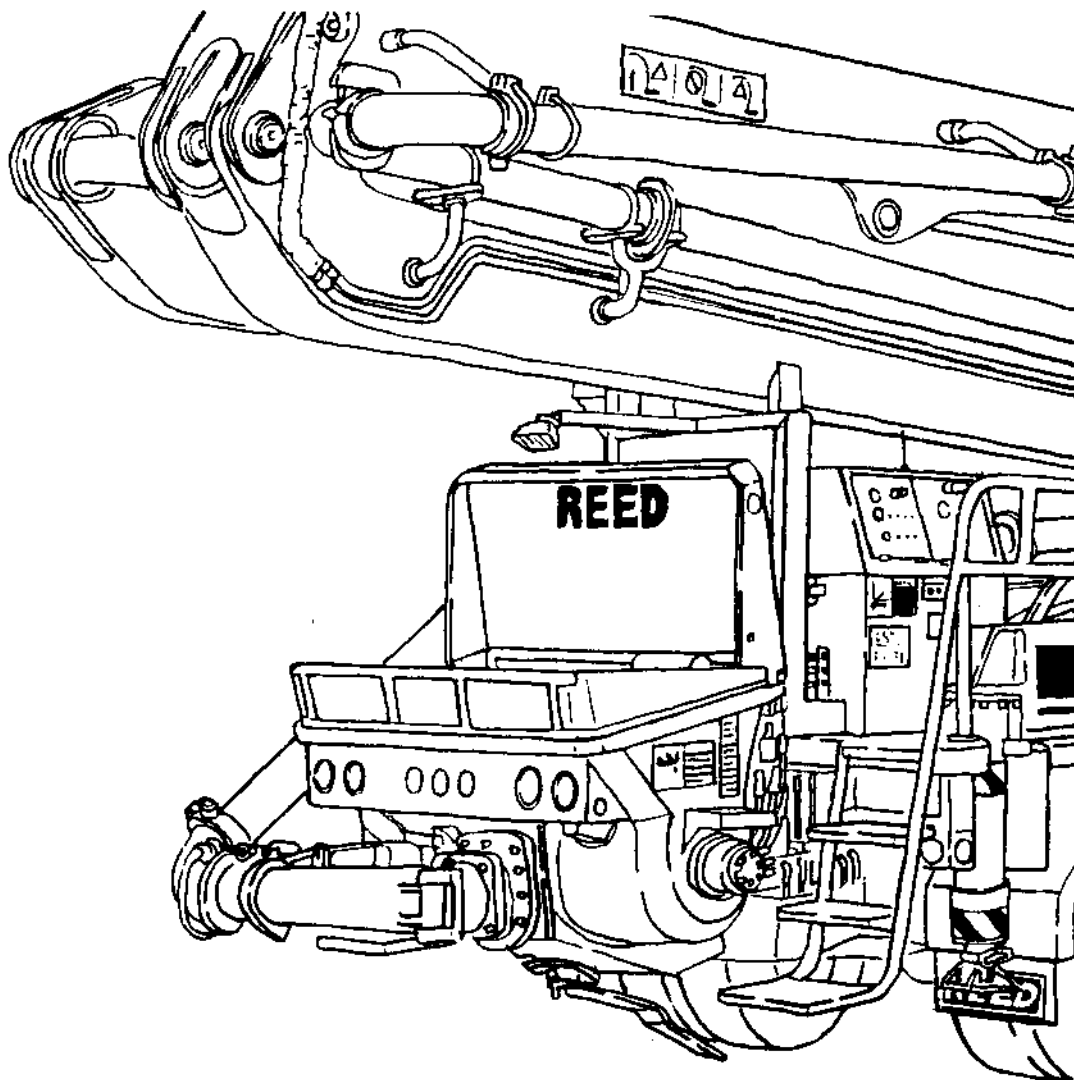
DASH (-) ITEM NOT ILLUSTRATED



**MODEL XXT 42 TRUCK MOUNTED
CONCRETE BOOM PUMP
ILLUSTRATED PARTS MANUAL**

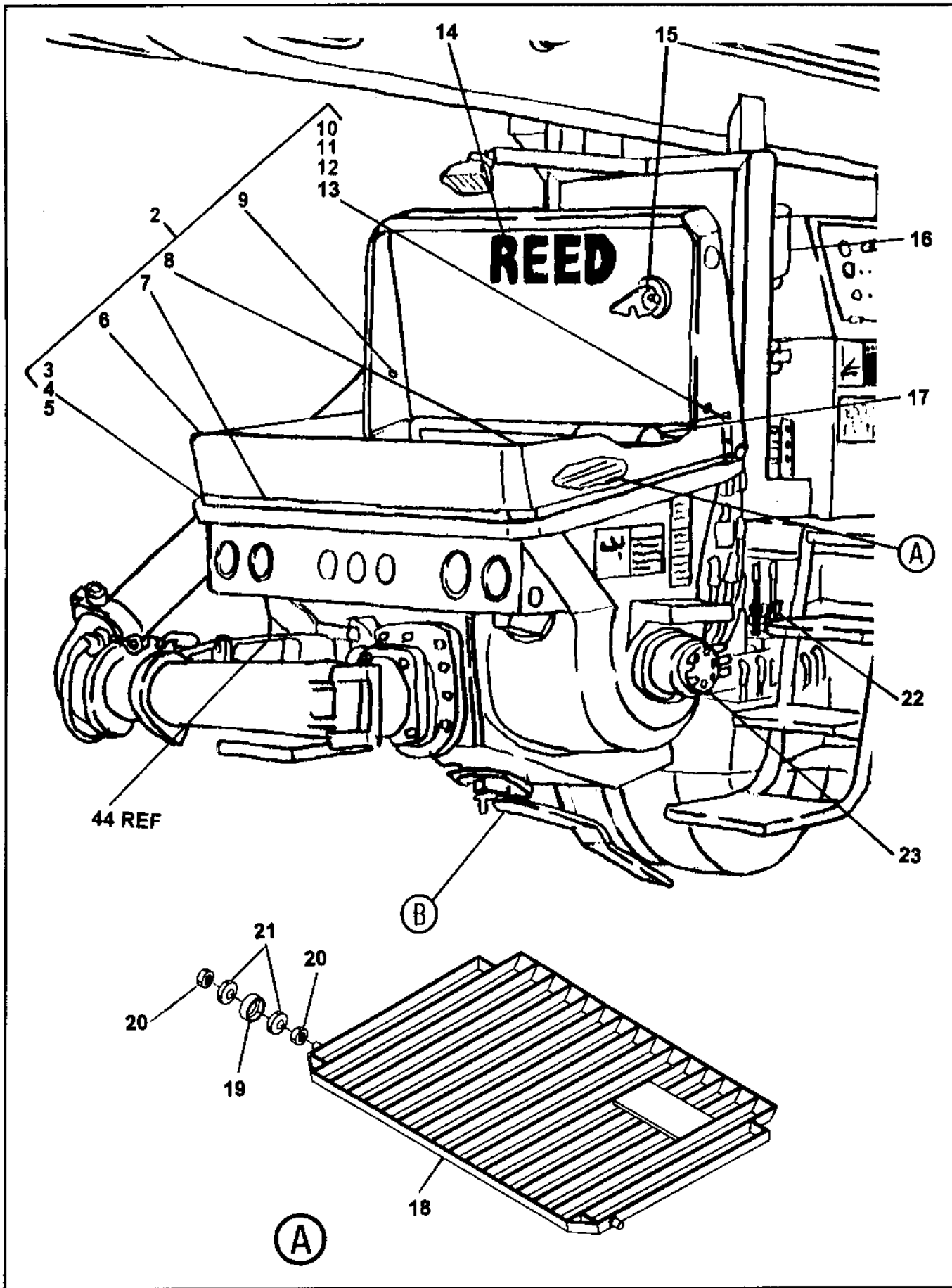
**XXT 42
PARTS
GROUP 10
FIGURE 03
PAGE 01**

THIS PAGE INTENTIONALLY LEFT BLANK.



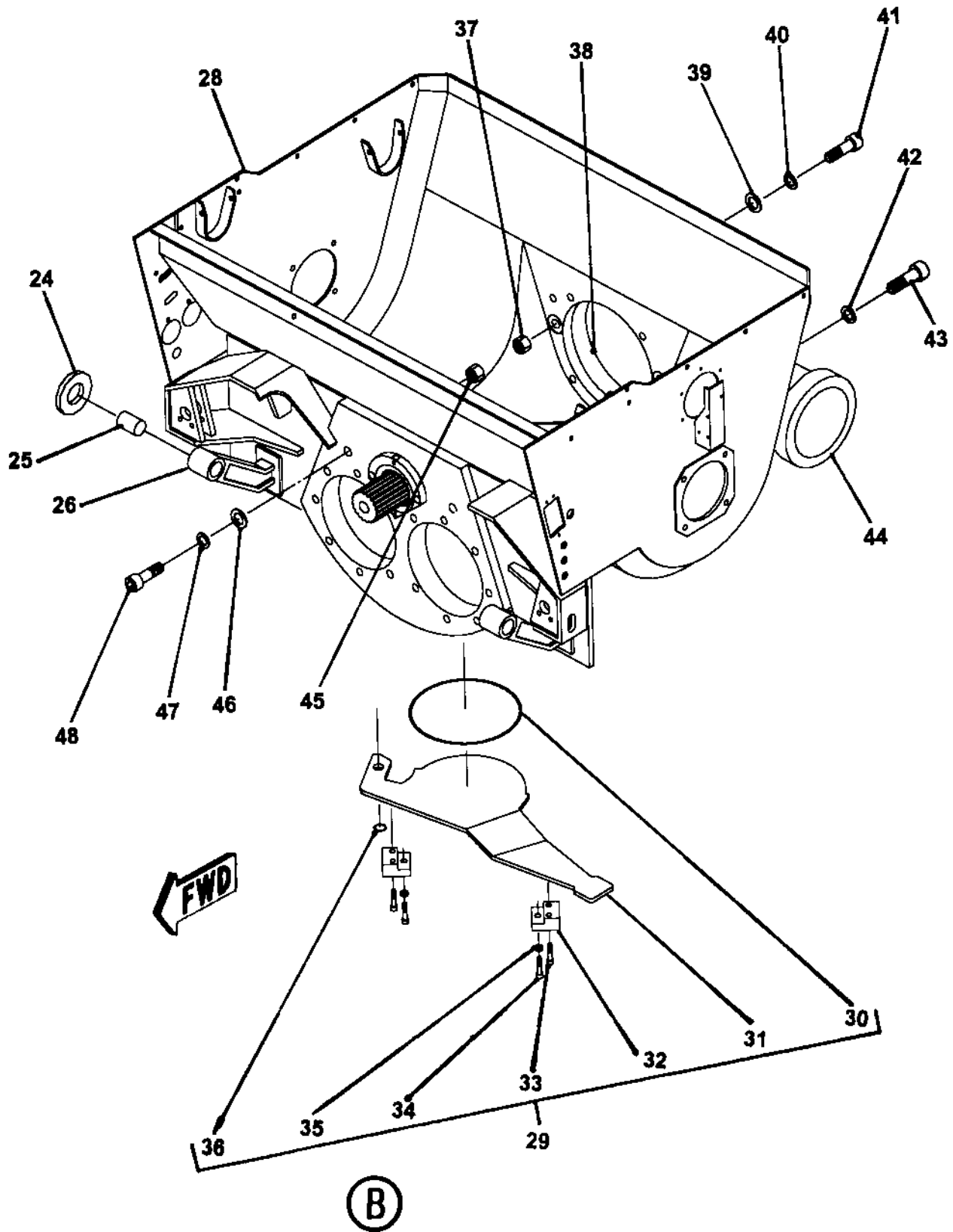
REED TRUCK MOUNTED CONCRETE BOOM PUMP MODEL XXT 42 ILLUSTRATED PARTS MANUAL GROUP 20 HOPPER INSTALLATION CONTAINS THE FOLLOWING FIGURES:

- | | |
|------------------|---|
| FIGURE 00 | TABLE OF CONTENTS |
| FIGURE 01 | HOPPER INSTALLATION |
| FIGURE 02 | HOPPER HOOK ASSEMBLY |
| FIGURE 03 | LUBRICATION PUMP ASSEMBLY |
| FIGURE 04 | HOPPER VIBRATION ASSEMBLY |
| FIGURE 05 | HOPPER GRID ASSEMBLY |
| FIGURE 06 | AGITATOR AND WASH CONTROL VALVE ASSEMBLY |
| FIGURE 07 | AGITATOR ASSEMBLY |
| FIGURE 08 | AGITATOR DRIVE MOTOR ASSEMBLY |
| FIGURE 09 | HOPPER OUTLET ASSEMBLY |
| FIGURE 10 | DRIVE CYLINDER LUBRICATION SYSTEM ASSEMBLY |
| FIGURE 11 | HOPPER LUBRICATION SYSTEM ASSEMBLY |
| FIGURE 12 | LUBRICATION DISTRIBUTOR ASSEMBLY |



ITEM NO.	REED'S PARTS NO.	DESCRIPTION	QTY
-1	20-01	Installation, Hopper (See Group 10, Figure 01 for NHA)	Ref
2	B-224005	• Group, Splash Guard	1
3	W-103579	• • Screw, Flat	28
4	W-101627	• • Washer	28
5	W-101848	• • Nut, Cap	28
6	B-202007	• • Rubber Guard - Hopper	1
7	B-224014	• • Strip, Back Side	1
8	B-224015	• • Strip, Side	2
9	B-202009	• • Strip, Clamping	2
10	B-202004	• • Board, Splash	1
11	W-101621	• • Screw, Hex	11
12	W-101625	• • Washer	11
13	W-102111	• • Nut, Lock	11
14	800442	• Decal, REED Black 6 Inch	
15	B-224025	• Assembly, Hopper Hook (See Group 20, Figure 02 for DET)	1
16	800065	• Assembly, Central Lubrication Pump (See Group 20, Figure 03 for DET)	1
17	71429	• Assembly, Hopper Vibration (See Group 20, Figure 04 for DET)	1
18	B-224046	• Assembly, Hopper Grid (See Group 20, Figure 05 for DET)	1
19	W101849	• Buffer, Rubber	2
20	W-101559	• Washer	4
21	B-223011	• Nut, Cap	4
22	W-100124	• Assembly, Agitator/Wash Control Valve (See Group 20, Figure 06 for DET)	1
23	B-254120	• Assembly, Agitator (See Group 20, Figure 07 for DET)	1
-48	B-183005	• Assembly, Central Lubrication Pump System	1
-49	B-183006	• • Assembly, Drive Cylinder Lubrication System (See Group 20, Figure 10 for DET)	1
-50	B-183007	• • Assembly, Hopper Lubrication System (See Group 20, Figure 11 for DET)	1

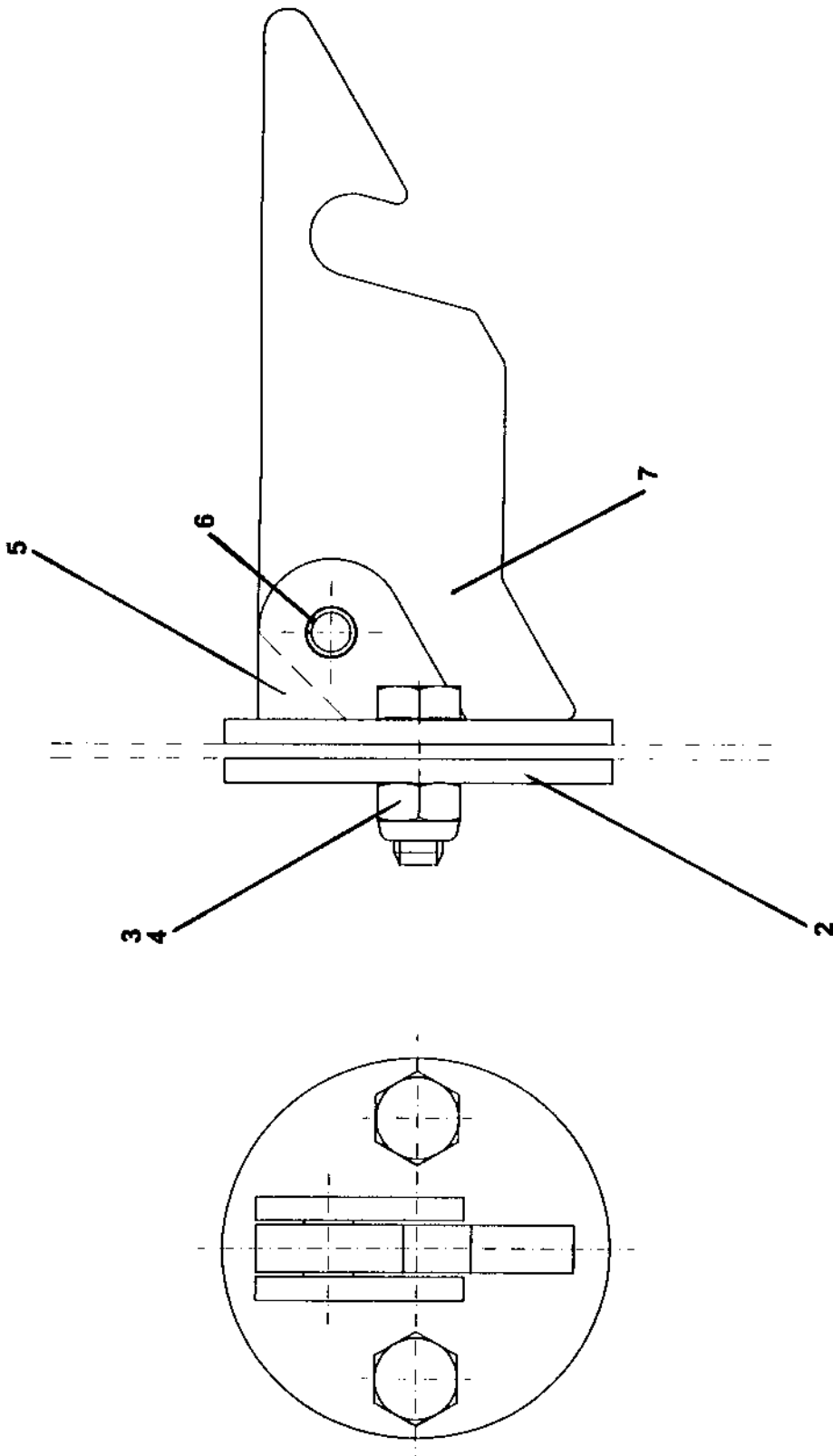
DASH (-) ITEM NOT ILLUSTRATED



ITEM NO.	REED'S PARTS NO.	DESCRIPTION					QTY
		1	2	3	4	5	
24	W-114165	• Coupling, Holder					2
25	W-100940	• Pin					4
26	W-103411	• Washer					4
-27	B-114153	• Coupling, Bracket					2
28	B-173021	• Weldment, Hopper					1
29	B-173085	• Assembly, Cleaning Cover					1
30	W-102908A	• • O-Ring, Round Cord					1
31	B-172130	• • Cover, Cleaning					1
32	B-172126	• • Block, Clamping					2
33	W-102855	• • Screw, M20 (attaching parts)					4
34	B-172218	• • Screw, M20 (attaching parts)					2
35	W-102891	• • Nut, Hex M20 (attaching parts)					2
36	W-102864	• • Ring, Lock					1
37	W-102851	• Nut					2
38	B-174077	• Bracket, Rear					1
39	W-103298	• Washer					2
40	W-101786	• Washer, Spring					2
41	W-102853	• Screw, M24 Hex					2
42	W-100506	• Washer, Conical Spring					9
43	W-103282	• Bolt, M16 Hex					9
44	20-08	• Assembly, Hopper Outlet (See Group 20, Figure 08 for DET)					1
45	W-101555	• Nut					2
46	W-102893	• Washer					2
47	W-102072	• Washer, Spring					2
48	W-105047	• Bolt, M16 Cup Square Neck					2
-48	B-183005	• Assembly, Central Lubrication Pump System					1
-49	B-183006	• • Assembly, Drive Cylinder Lubrication System (See Group 20, Figure 10 for DET)					1
-50	B-183007	• • Assembly, Hopper Lubrication System (See Group 20, Figure 11 for DET)					1

DASH (-) ITEM NOT ILLUSTRATED

HOPPER HOOK ASSEMBLY





HOPPER HOOK ASSEMBLY

XXT 42
PARTS
GROUP 20
FIGURE 02
PAGE 02

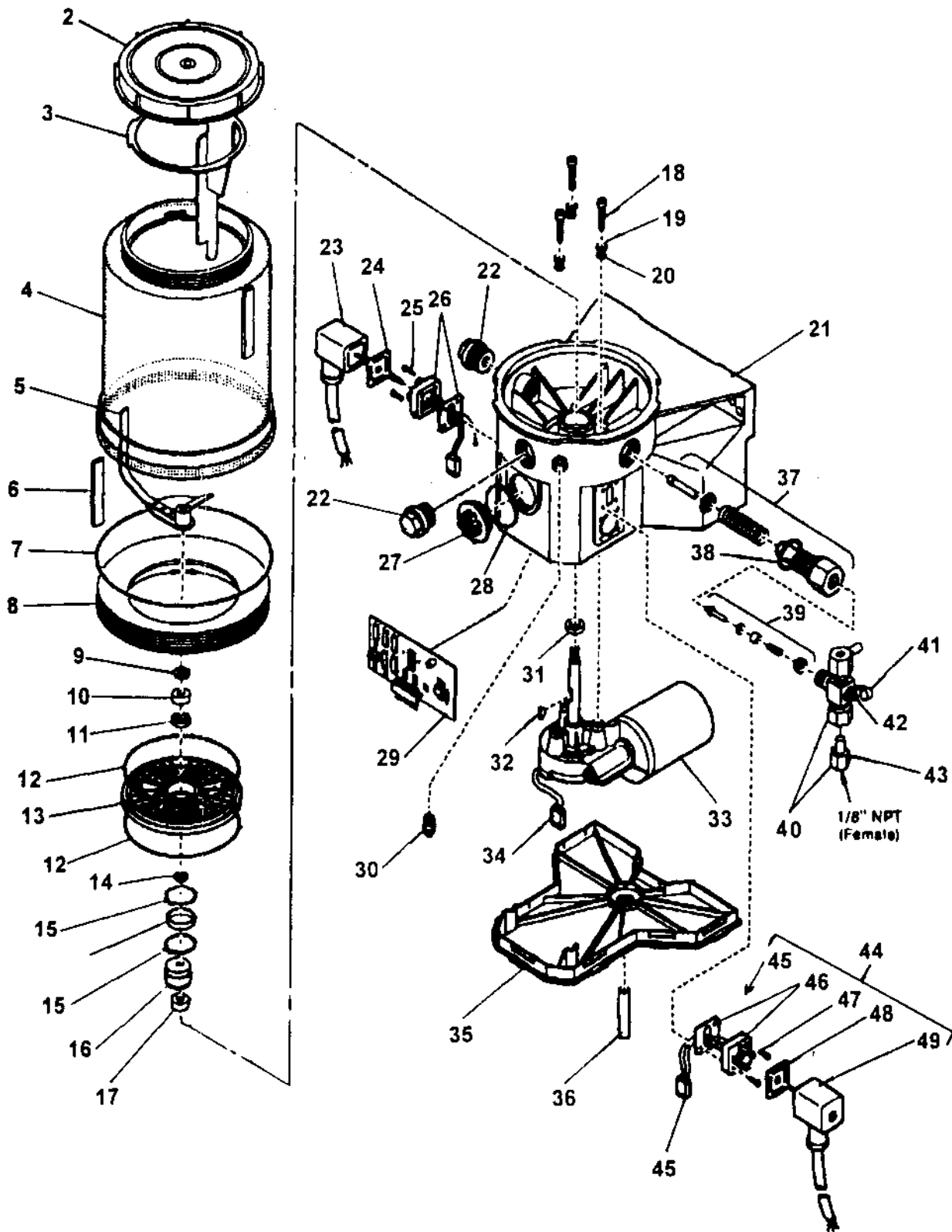
ITEM NO.	REED'S PARTS NO.	DESCRIPTION					QTY
		1	2	3	4	5	
-1	B-224025	Assembly, Hopper Hook (See Group 20, Figure 01 for NHA)					Ref
2	B-224027	• Plate					1
3	W-101556	• Nut, M10					2
4	W-101553	• Bolt, Hex					2
5	B-224026	• Plate, Basic					1
6	W-102881	• Sleeve, Clamping					1
7	B-224030	• Plate					1

DASH (-) ITEM NOT ILLUSTRATED

REED

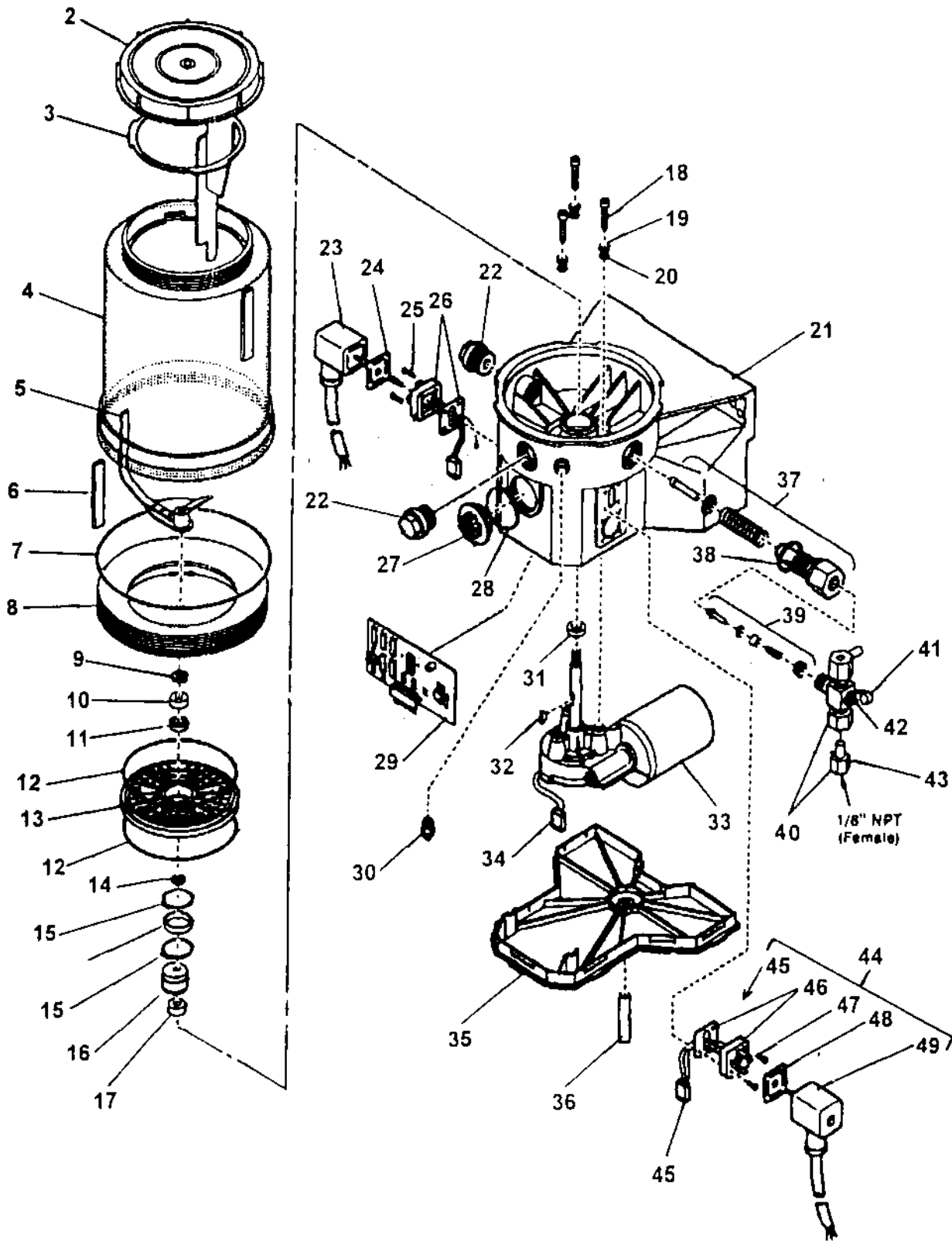
LUBRICATION PUMP ASSEMBLY

XXT 42
PARTS
GROUP 20
FIGURE 03
PAGE 01



ITEM NO.	REED'S PARTS NO.	DESCRIPTION					QTY
		1	2	3	4	5	
-1	800065	Assembly, Lubrication Pump (See Group 20, Figure 01 for NHA)					Ref
2		• Lid					1
3		• Paddle, Fixed					1
4		• Reservoir					1
5		• Paddle, Stirring					1
6		• Hose					1
7		• O-Ring					1
8		• Adapter					1
9		• Washer					1
10		• Ring, Bearing					2
11		• Bearing					1
12		• O-Ring					2
13		• Plate, Intermediate					1
14		• Shim					1
15		• Ring, Snap					2
16		• Ring, Inner					1
17		• Cam, Eccentric					1
18		• Screw					3
19		• Washer					3
20		• O-Ring					3
21		• Housing, Pump					1
22		• Plug, Closure					2
23		• Socket with Cord					1
24		• Packing, Flat					1
25		• Screw					4
26		• Plug					1
27		• Plug, Sealing					1
28		• O-Ring					1
29		• Board, Printed Circuit					1
30		• Fitting, Grease					1
31		• Seal, Radial					1
32		• Key, Wood Ruff					1
33		• Motor, 12 VDC					1
34		• Plug, Motor					1
35		• Cover, Housing					1

DASH (-) ITEM NOT ILLUSTRATED





LUBRICATION PUMP ASSEMBLY

XXT 42
PARTS
GROUP 20
FIGURE 03
PAGE 04

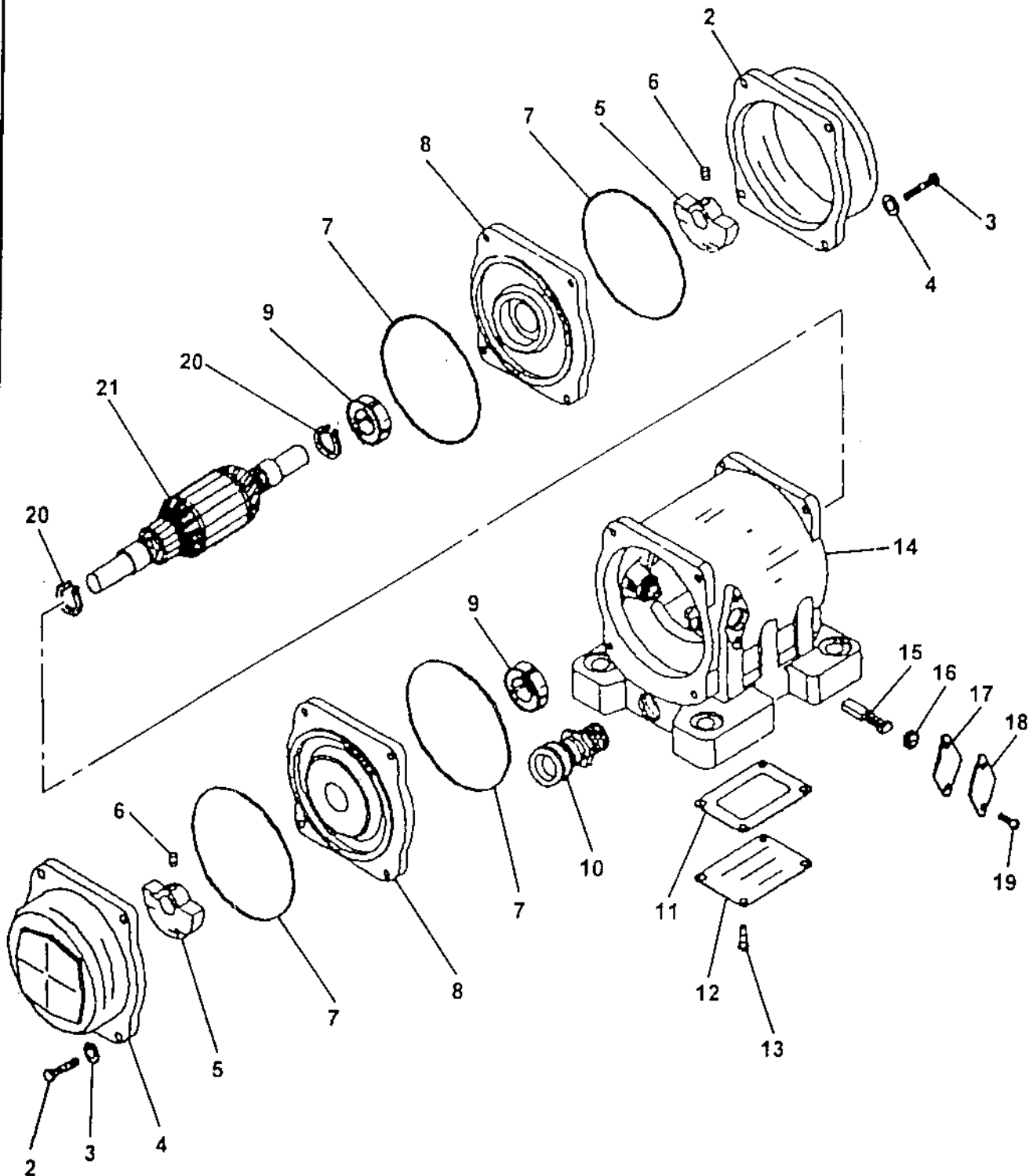
ITEM NO.	REED'S PARTS NO.	DESCRIPTION					QTY
		1	2	3	4	5	
36						• Hose	1
37						• Element, Pump	1
38						• Gasket	1
39						• Valve, Check	1
40						• Assembly, Pressure Release	1
41						• Cap, Grease	1
42						• Fitting, Grease	1
43						• Adapter for Relief	1
44						• Assembly, Optional Pressure Relief Valve	1
45						• • Cord, Optional Power	1
46						• • Plug, Optional	1
47						• • Screw, Optional	4
48						• • Packing, Optional Flat	1
49						• • Socket, Optional	1

DASH (-) ITEM NOT ILLUSTRATED

REED

HOPPER VIBRATOR ASSEMBLY

XXT 42
PARTS
GROUP 20
FIGURE 04
PAGE 01

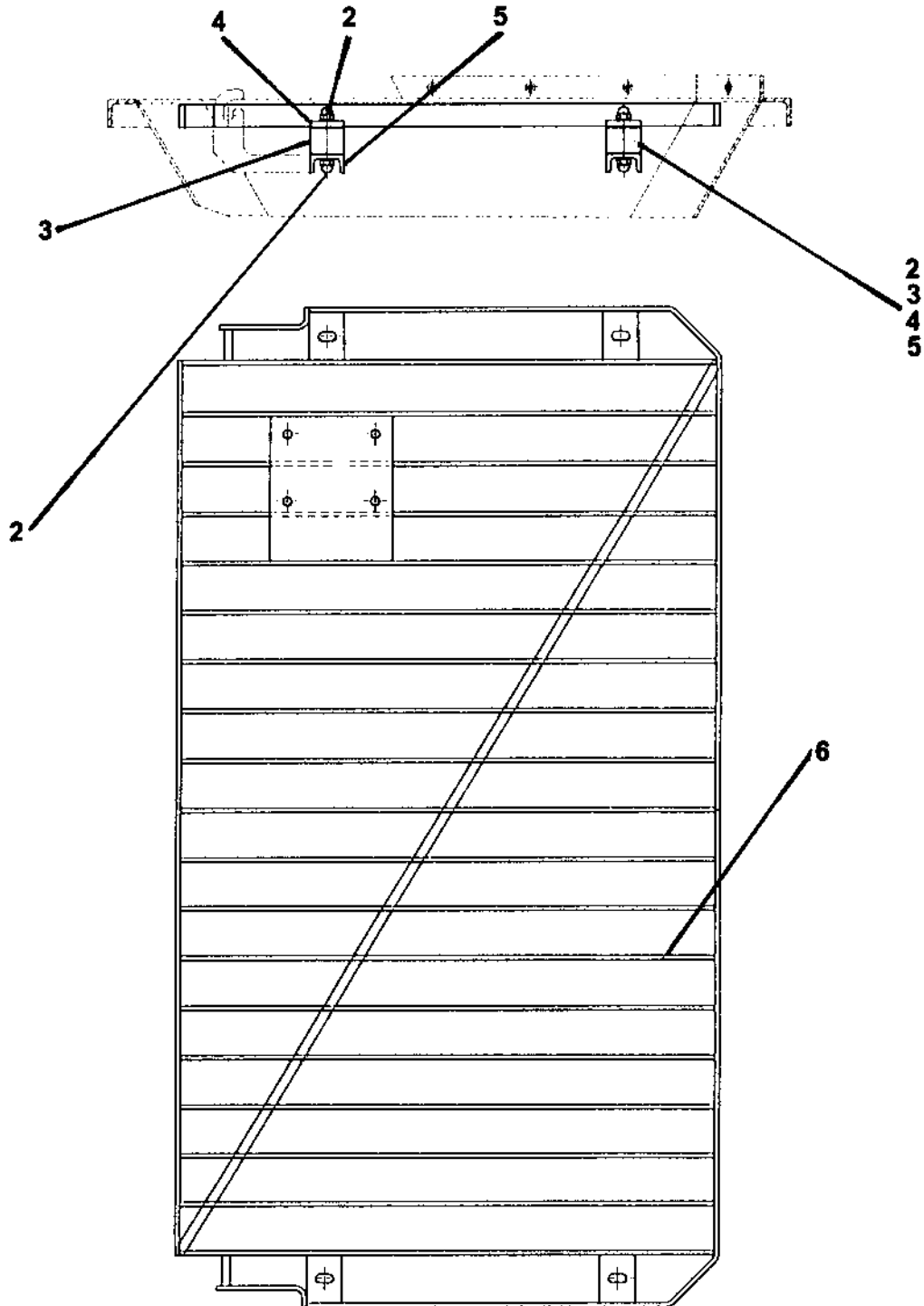


REVISION:

ITEM NO.	REED'S PARTS NO.	DESCRIPTION					QTY
		1	2	3	4	5	
-1	71429	Assembly, Hopper Vibrator (See Group 20, Figure 01 for NHA)					Ref
2		• Cap, End					2
3		• Bolt (attaching parts)					8
4		• Washer, Lock (attaching parts)					8
5		• Weight					2
6		• Screw, Set (attaching parts)					2
7		• O-Ring					4
8		• Bell, End					2
9		• Bearing					2
10		• Holder, Cord					1
11		• Gasket					1
12		• Cover, Box					1
13		• Screw (attaching parts)					4
14		• Sub-Assembly, Housing					1
15		• Brush					1
16		• Cap, Brush					2
17		• Gasket					2
18		• Cover, Brush					2
19		• Screw (attaching parts)					4
20		• Ring, Snap					2
21		• Assembly, Armature					1

DASH (-) ITEM NOT ILLUSTRATED

HOPPER GRID ASSEMBLY





HOPPER GRID ASSEMBLY

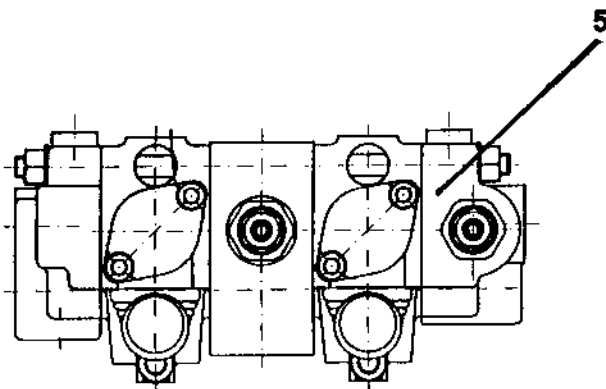
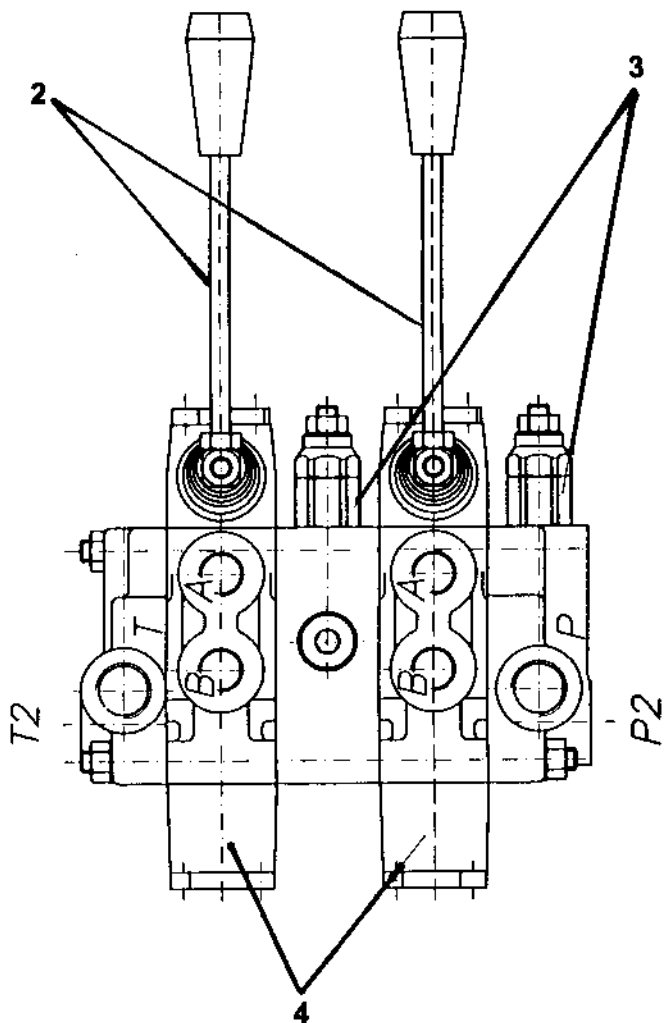
XXT 42
PARTS
GROUP 20
FIGURE 05
PAGE 02

ITEM NO.	REED'S PARTS NO.	DESCRIPTION					QTY
		1	2	3	4	5	
-1	B-224046	Assembly, Hopper Grid (See Group 20, Figure 01 for NHA)					Ref
2	B-101847	• Nut, Cap					8
3	W-104067	• Cushion, Lover					4
4	W-103288	• Washer					4
5	W-103288	• Plate, Basic					4
6	B-224035	• Weldment, Grid					1

DASH (-) ITEM NOT ILLUSTRATED

AGITATOR AND WASH CONTROL VALVE ASSEMBLY

XXT 42
PARTS
GROUP 20
FIGURE 06
PAGE 01





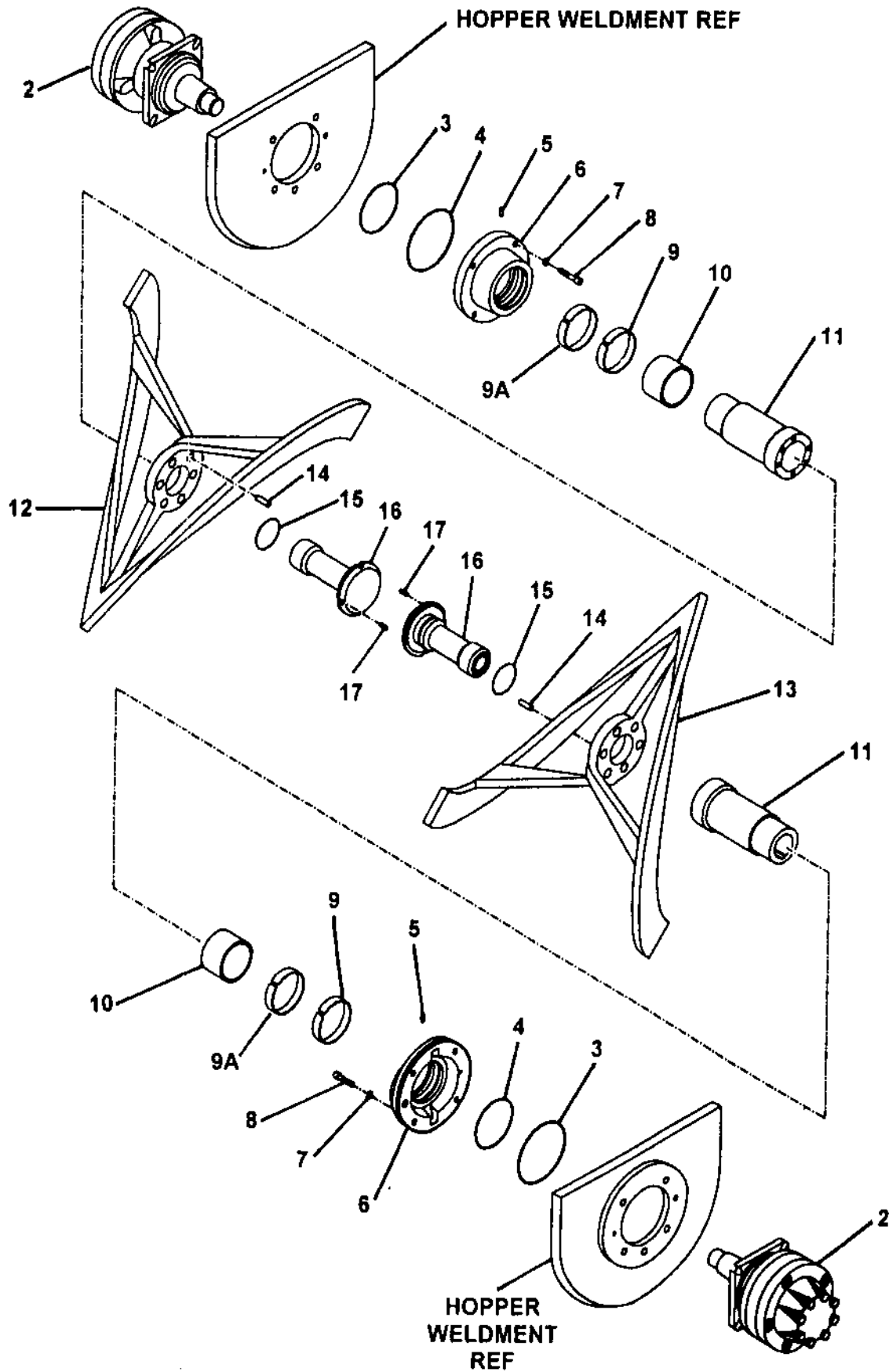
**AGITATOR AND WASH CONTROL
VALVE ASSEMBLY**

XXT42
PARTS
GROUP 20
FIGURE 06
PAGE 02

ITEM NO.	REED'S PARTS NO.	DESCRIPTION					QTY
		1	2	3	4	5	
-1	W-100124	Assembly, Agitator and Wash Control Valve (See Group 20, Figure 01 for NHA)					Ref
2	W-102747	• Lever, Control Valve					2
3	W-105559	• Cartridge, Control Valve					2
4	W-105644	• Element					2
5	W-101881	• Kit, seal					4

DASH (-) ITEM NOT ILLUSTRATED

AGITATOR ASSEMBLY





AGITATOR ASSEMBLY

XXT42
PARTS
GROUP 20
FIGURE 07
PAGE 02

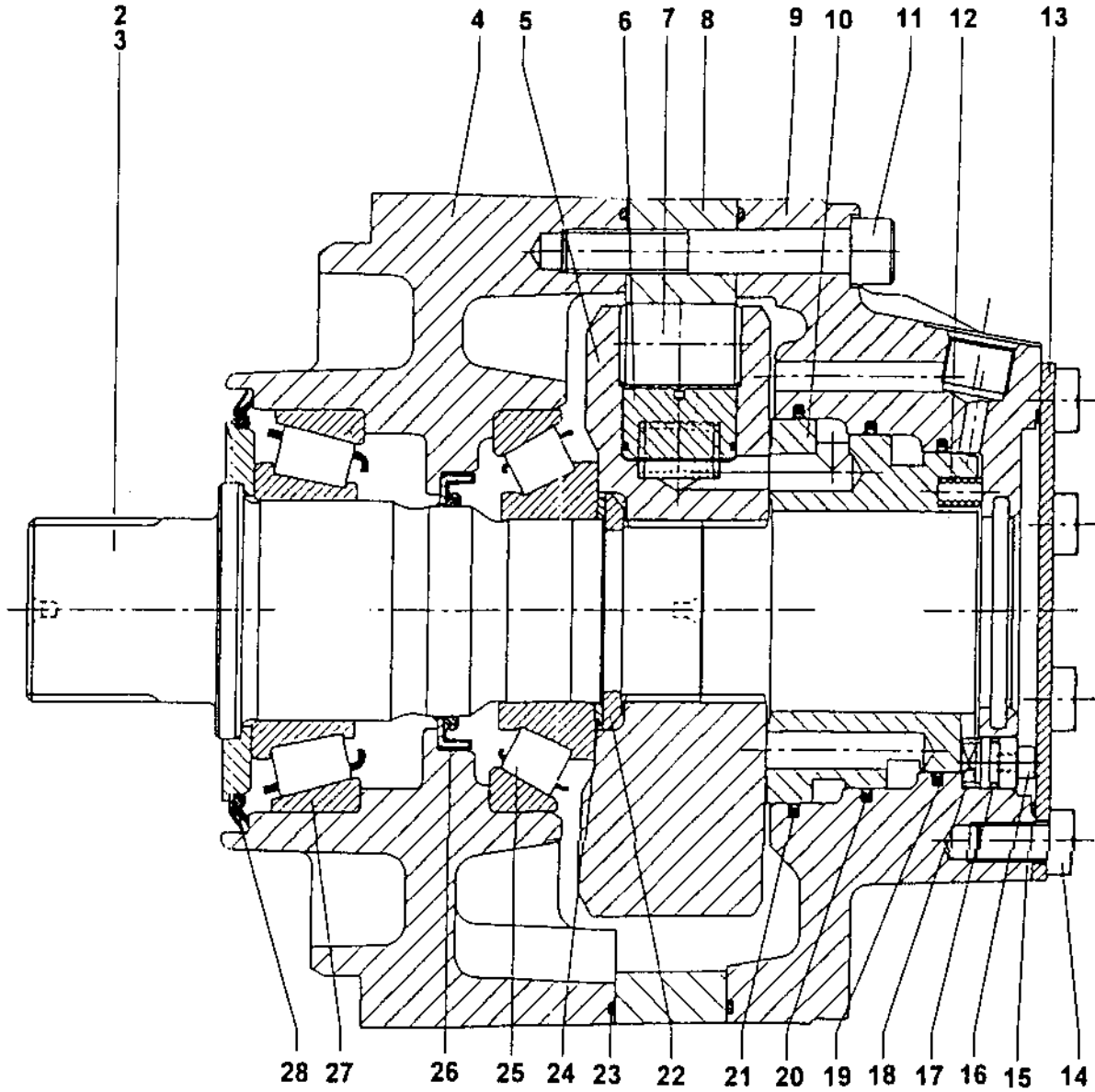
ITEM NO.	REED'S PARTS NO.	DESCRIPTION					QTY
		1	2	3	4	5	
-1	B-254120	Assembly, Agitator (See Group 20, Figure 01 for NHA)					Ref
2	W-101240	• Assembly, Agitator Drive Motor (See Group 20, Figure 08 for DET)					1
3	W-103064	• O-Ring					2
4	W-103063	• O-Ring					2
5	W-1004909	• Screw, M5 Set					2
6	B-254101	• Assembly, Flange					2
7	W-102962	• Washer					8
8	W-103062	• Screw, M12 Hex					8
9	W-102544	• Ring, Groove-Outer					2
9A	B-253029	• Ring, Groove-Inner					2
10	B-254104	• Sleeve, Wear					2
11	B-254102	• Shaft					2
12	B-254105	• Agitator, Left					1
13	B-254106	• Agitator, Right					1
14	W-103065	• Pin 10m					12
15	W-103249	• O-Ring					2
16	B-254103	• Nut					2
17	W-103106	• Sleeve, Clamping					4

DASH (-) ITEM NOT ILLUSTRATED



AGITATOR DRIVE MOTOR ASSEMBLY

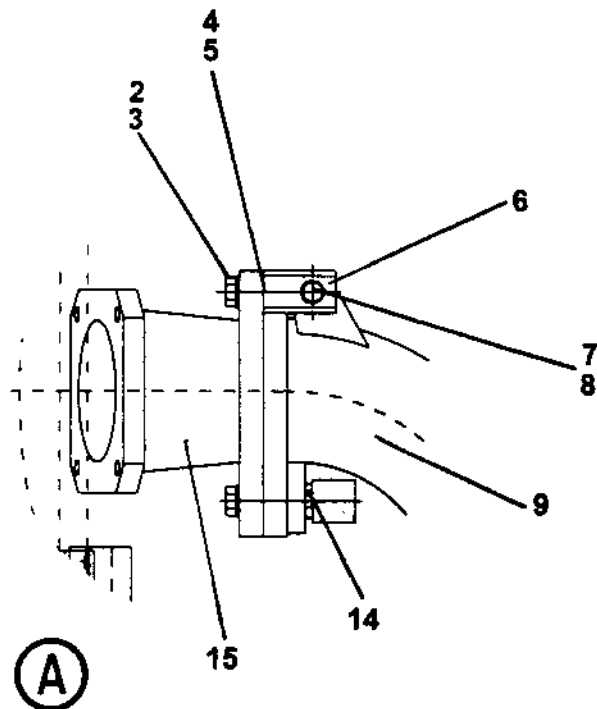
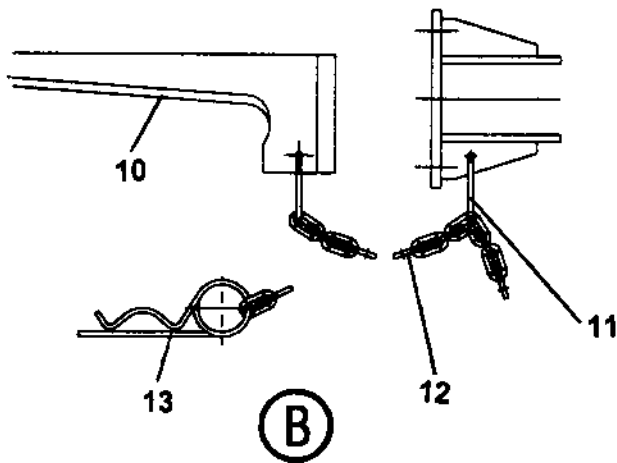
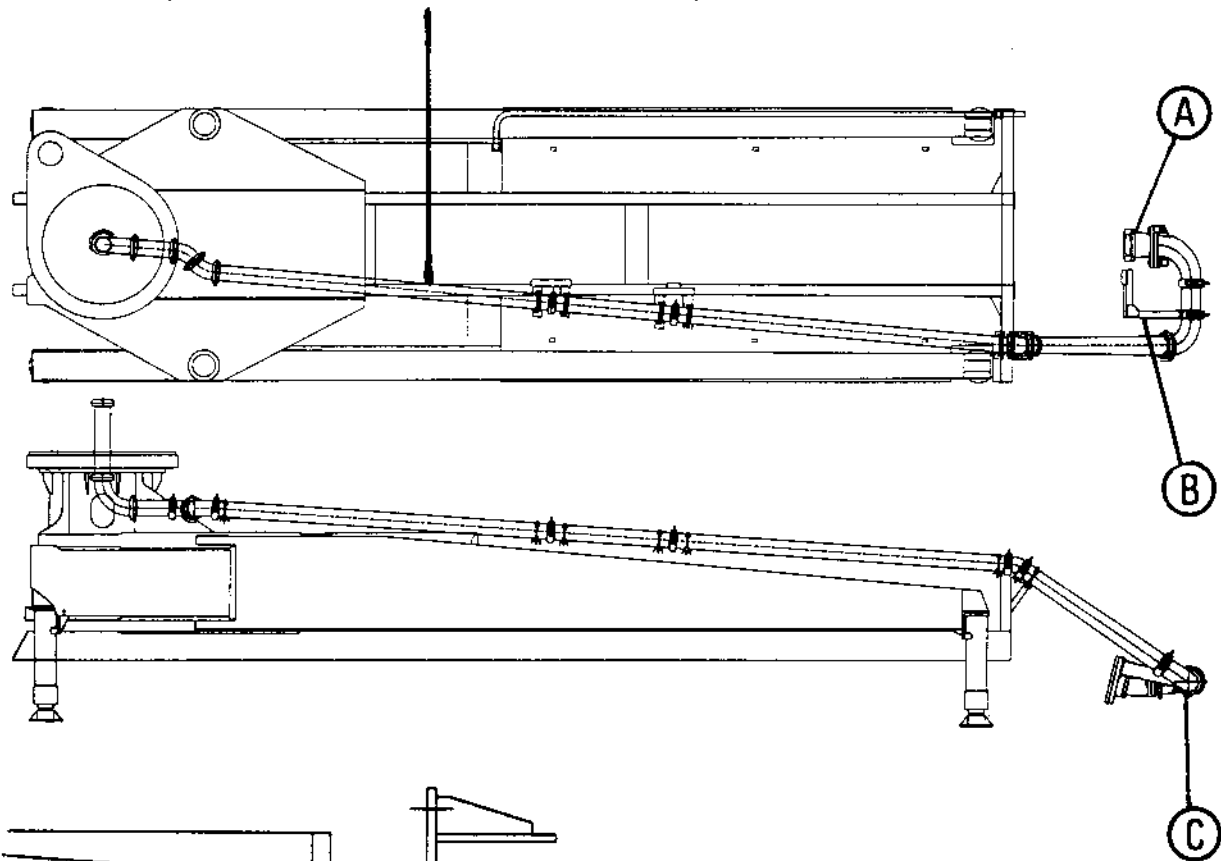
XXT 42
PARTS
GROUP 20
FIGURE 08
PAGE 01



ITEM NO.	REED'S PARTS NO.	DESCRIPTION					QTY
		1	2	3	4	5	
-1	W-101240	Assembly, Agitator Drive Motor (See Group 20, Figure 07 for NHA)					Ref
2		• Assembly, Auger Drive Motor					1
3		• Shaft					1
4		• Case, Front					1
5		• Block, Cylinder					1
6		• Piston					8
7		• Roller					8
8		• Cam					1
9		• Case, Rear					1
10		• Ring, Distributor					1
11		• Screw, M12 Cap					12
12		• Spring					6
13	W-104755	• Plate, Cover					1
14		• Screw, M10 Hex					8
15		• O-Ring					1
16		• Screw, M5 Cap					1
17		• O-Ring					1
18		• Pin, Stop					1
19		• Seal, Rod					1
20		• Seal, Rod					1
21		• Seal, Rod					1
22	W-104395	• Ring, Split					1
23		• O-Ring					2
24		• Washer					1
25	W-105716	• Bearing					1
26		• Seal, Shaft					1
27	W-105715	• Bearing					1
28	W-101241	• Set, Sealing					1

DASH (-) ITEM NOT ILLUSTRATED

CONCRETE DECK PIPE LINE ASSEMBLY
(SEE GROUP 90, FIGURE 10 FOR REF)





HOPPER OUTLET ASSEMBLY

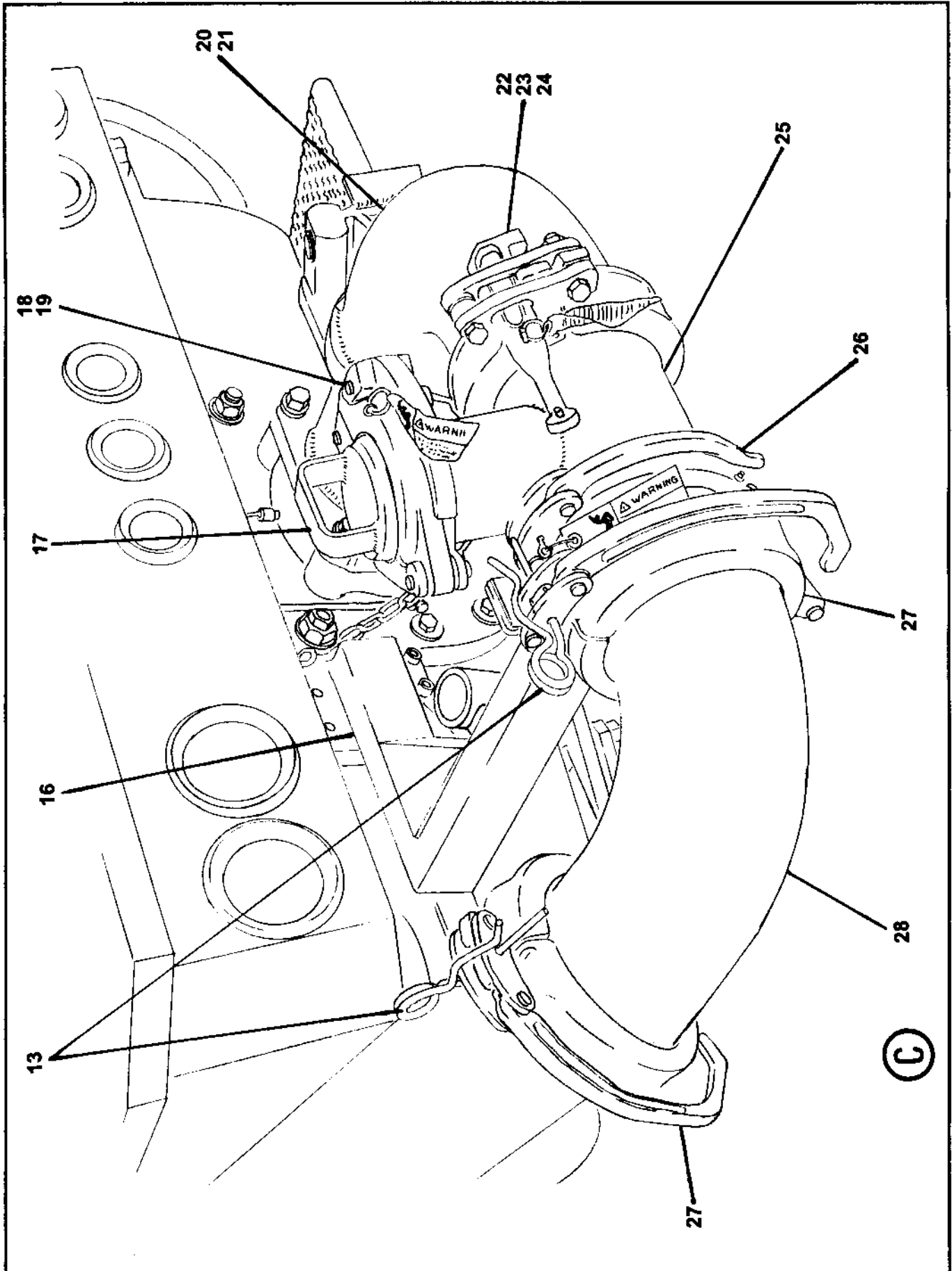
XXT 42
PARTS
GROUP 20
FIGURE 09
PAGE 02

ITEM NO.	REED'S PARTS NO.	DESCRIPTION					QTY
		1	2	3	4	5	
-1	20-09	Assembly, Hopper Outlet (See Group 20, Figure 01 for NHA)					Ref
2	W-102848	• Screw, M24 Hex Head					3
3	W-102331	• Washer					3
4	B-194075	• Plate, Space					2
5	B-194076	• Plate, Space					2
6	B-194049	• Hinge					2
7	B-194050	• Bolt					1
8	W-100694	• Ring, Snap					2
9	W-104025	• O-Ring					1
10	B-194046	• Wedge, Locking					1
11	W-103731	• S-Hook					2
12	W-103732	• Chain, 1 Meter					1
13	W-101266	• Pin, Spring					3
14	B-194045	• Bolt, Locking					1
15	B-191010	• Reducer					1
16	801218	• Bracket, Hopper Elbow					1
17	801565	• Weldment, Cap					1
18	71530	• Coupling, Snap HD					1
19	800338	• Gasket, Coupling, Snap HD					1
20	W-100805	• Nipple, Grease					1
21	B-191015	• Elbow, Reducer					1
22	W-105165	• Coupling, Wedge					1
23	W105164	• O-Ring					1
24	B-193017	• Flange					1
25	801558	• Adapter, Hopper Elbow					1
26	B-194053	• Coupling, Snap					1
27	72242	• Coupling, Snap					2
28	800336	• Elbow, 90					1

DASH (-) ITEM NOT ILLUSTRATED

REVISION:

HOPPER OUTLET ASSEMBLY





HOPPER OUTLET ASSEMBLY

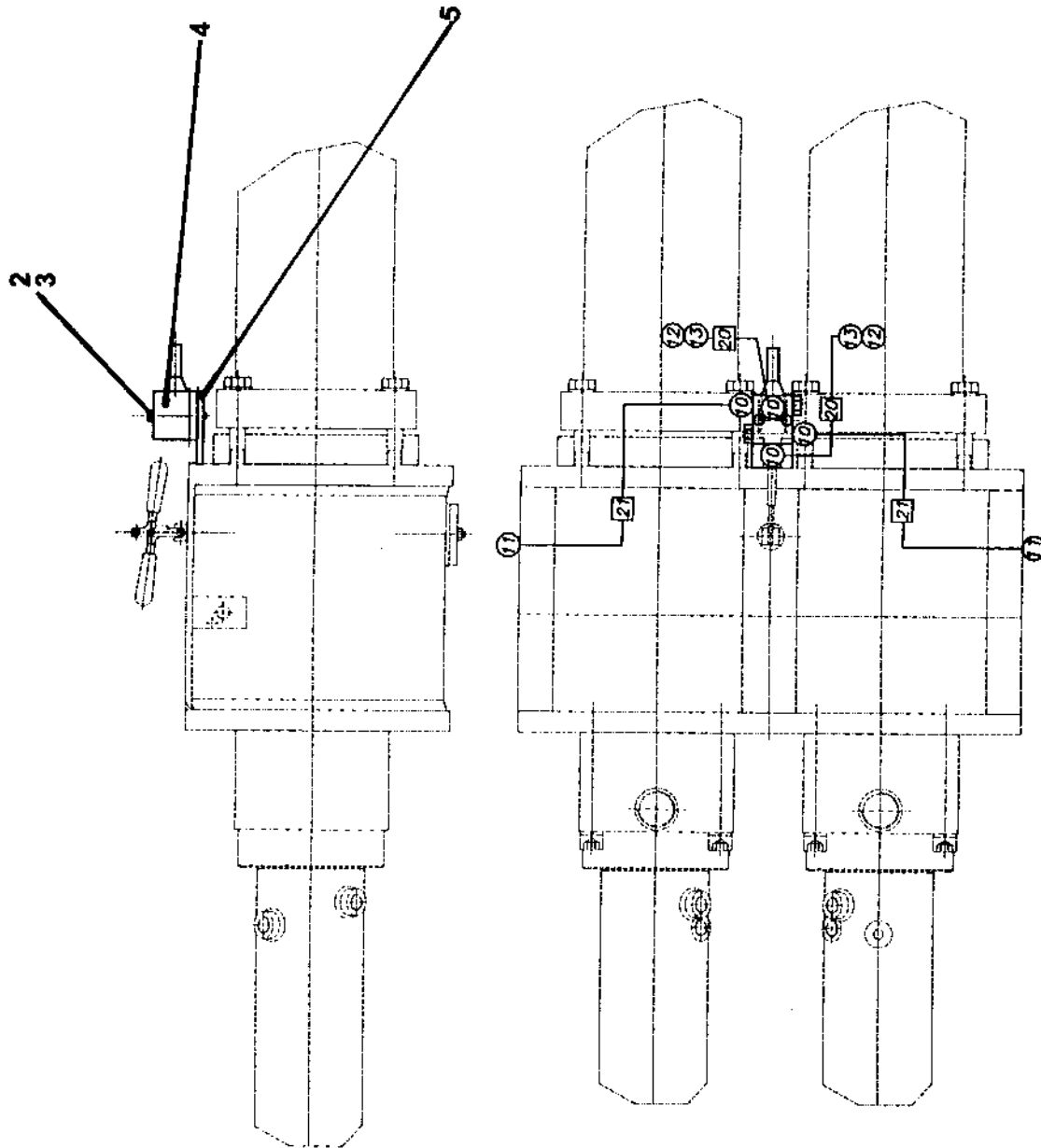
XXT 42
PARTS
GROUP 20
FIGURE 09
PAGE 04

ITEM NO.	REED'S PARTS NO.	DESCRIPTION					QTY
		1	2	3	4	5	
-1	20-09	Assembly, Hopper Outlet (See Group 20, Figure 01 for NHA)					Ref
2	W-102848	• Screw, M24 Hex Head					3
3	W-102331	• Washer					3
4	B-194075	• Plate, Space					2
5	B-194076	• Plate, Space					2
6	B-194049	• Hinge					2
7	B-194050	• Bolt					1
8	W-100694	• Ring, Snap					2
9	W-104025	• O-Ring					1
10	B-194046	• Wedge, Locking					1
11	W-103731	• S-Hook					2
12	W-103732	• Chain, 1 Meter					1
13	W-101266	• Pin, Spring					3
14	B-194045	• Bolt, Locking					1
15	B-191010	• Reducer					1
16	801218	• Bracket, Hopper Elbow					1
17	801565	• Weldment, Cap					1
18	71530	• Coupling, Snap HD					1
19	800338	• Gasket, Coupling, Snap HD					1
20	W-100805	• Nipple, Grease					1
21	B-191015	• Elbow, Reducer					1
22	W-105165	• Coupling, Wedge					1
23	W105164	• O-Ring					1
24	B-193017	• Flange					1
25	801558	• Adapter, Hopper Elbow					1
26	B-194053	• Coupling, Snap					1
27	72242	• Coupling, Snap					2
28	800336	• Elbow, 90					1

DASH (-) ITEM NOT ILLUSTRATED

REVISION:

DRIVE CYLINDER LUBRICATION SYSTEM ASSEMBLY





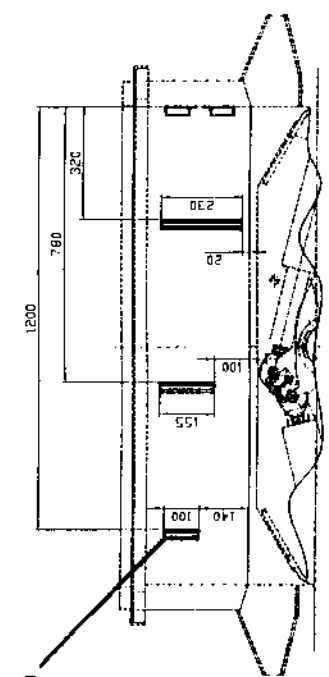
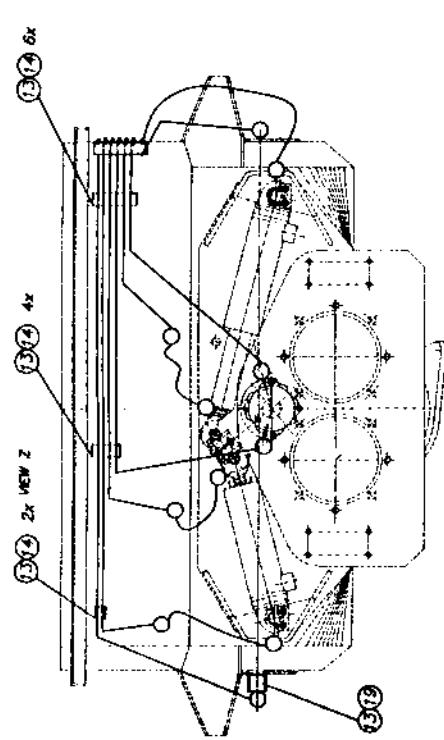
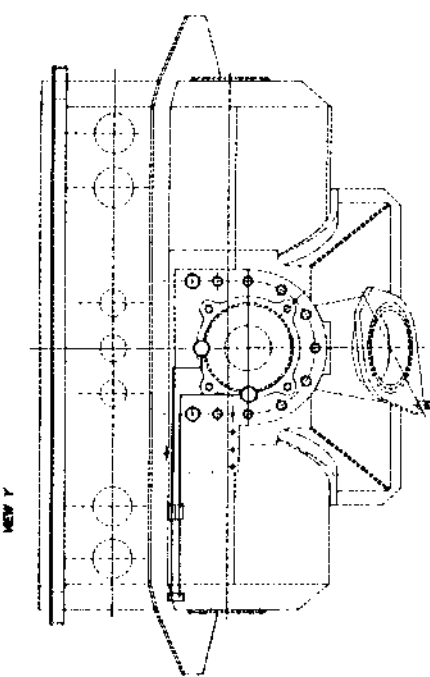
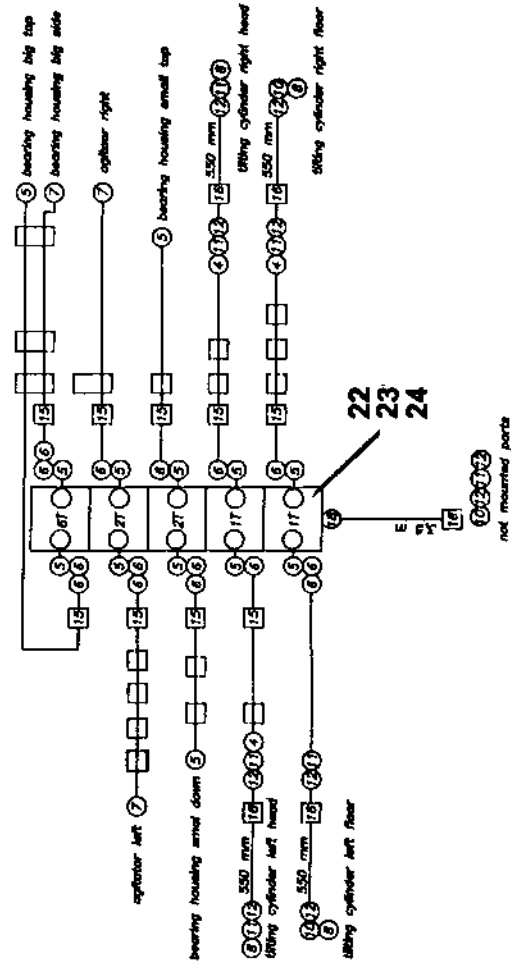
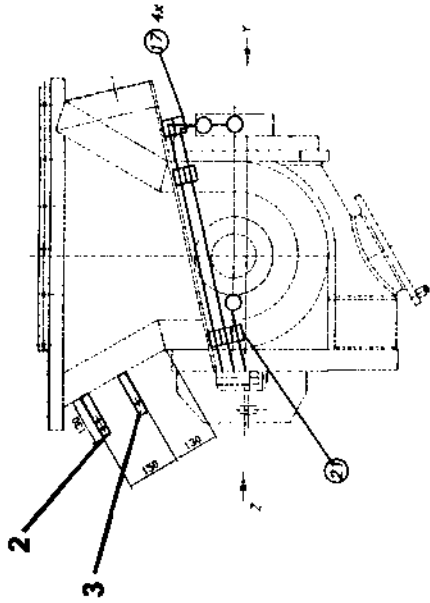
**DRIVE CYLINDER
LUBRICATION SYSTEM ASSEMBLY**

XXT 42
PARTS
GROUP 20
FIGURE 10
PAGE 02

ITEM NO.	REED'S PARTS NO.	DESCRIPTION					QTY
		1	2	3	4	5	
-1	B-183006	Assembly, Drive Cylinder Lubrication System (See Group 20, Figure 01 for NHA)					Ref
2	W-105277	• Bolt, M8 Hex					2
3	W-102205	• Washer, Spring					2
4	W-104402	• Distributer (VSKH 2- D)					1
5	B-183008	• Bracket, Distributer					1
10	W-105202	• Coupling, STR Male Stud					4
11	W-101960	• Reducer, Pipe					2
12	W-102289	• Coupling, Straight Male Stud					2
13	W-100589	• Elbow, Adjustable					2
20	W-103515	• Hose, Hydraulic					2
21	W-105278	• Bar					2

DASH (-) ITEM NOT ILLUSTRATED

HOPPER LUBRICATION SYSTEM ASSEMBLY



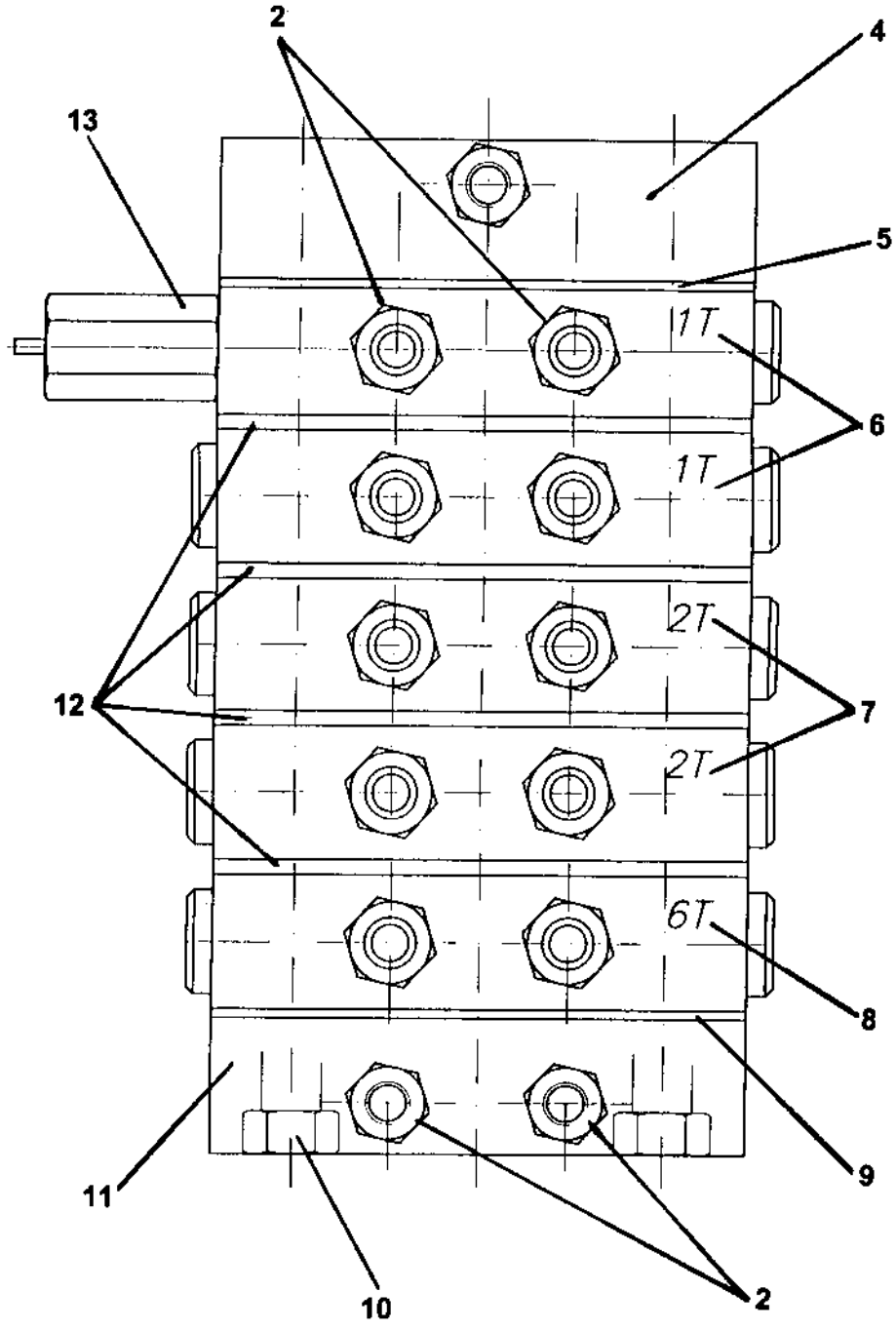
ITEM NO.	REED'S PARTS NO.	DESCRIPTION					QTY
		1	2	3	4	5	
-1	B-183007	Assembly, Hopper Lubrication System (See Group 20, Figure 01 for NHA)					Ref
2	B-184006	• Angle, Fixing					1
3	B-184007	• Angle, Fixing					1
4	W-105282	• Coupling, Straight					3
5	W-100546	• Coupling, Straight Male Stud					13
6	W-102664	• Elbow, Adjustable					15
7	W-102284	• Elbow, Throttle Free benjo					3
8	W-102603	• Stud, Male					4
9	W-102300	• Profile, Fixing					A/R
10	W-102643	• Sleeve, 90 Threaded					3
11	W-100253	• Piece, Hose Connection					7
12	W-100254	• Sleeve, Threaded					10
13	W-105144	• Clip, Pipe					13
14	W-105151	• Nut, Pipe Clamp Tee					24
15	W-105416	• Set, Pipe					1
16	W-100255	• Pipe, Plastic					6
17	W-105281	• Clip, Pipe					4
18	W-102665	• Coupling, Straight Male Stud					1
19	W-105422	• Plate, Welding					1
-20	W-103137	• Tie, Cable					10
21	W-104065	• Screw, M6 Hex					1
22	W-102602	• Assembly, Lubrication Distributor (See Group 20, Figure 12 for DET)					1
23	W-103512	• Screw, M6 Hex					3
24	W-102131	• Nut, Locking					3

DASH (-) ITEM NOT ILLUSTRATED



LUBRICATION DISTRIBUTOR ASSEMBLY

XXT 42
PARTS
GROUP 20
FIGURE 12
PAGE 01





LUBRICATION DISTRIBUTOR ASSEMBLY

XXT 42
PARTS
GROUP 20
FIGURE 12
PAGE 02

ITEM NO.	REED'S PARTS NO.	DESCRIPTION					QTY
		1	2	3	4	5	
-1	W-102602	Assembly, Lubrication Distributor (See Group 20, Figure 11 for NHA)					Ref
2	W-100303	• Nipple, Grease					10
-3	W-102585	• Sub- Assembly, Lubrication Distributor					1
4	W-105757	•• Plate, End (VPM-4)					1
5	W-105763	•• Module, End (VP2-09)					1
6	W-105758	•• Plate, Distributor (VPM-K-1T)					2
7	W-105759	•• Plate, Distributor (VPM-K-2T)					2
8	W-105760	•• Plate, End (VPM-K-6T)					1
9	W-105761	•• Module, Input (VP2-07)					1
10	W-105765	•• Rod, Tension (VP-95)					2
11	W-105764	•• Plate, Input (VPM-E)					1
12	W-105762	•• Module, Distance (VP2-08)					4
13	W-102586	•• Indicator, Cycle) (VPM-ZY)					1

DASH (-) ITEM NOT ILLUSTRATED

REED

**MODEL XXT 42 TRUCK MOUNTED
CONCRETE BOOM PUMP
ILLUSTRATED PARTS MANUAL**

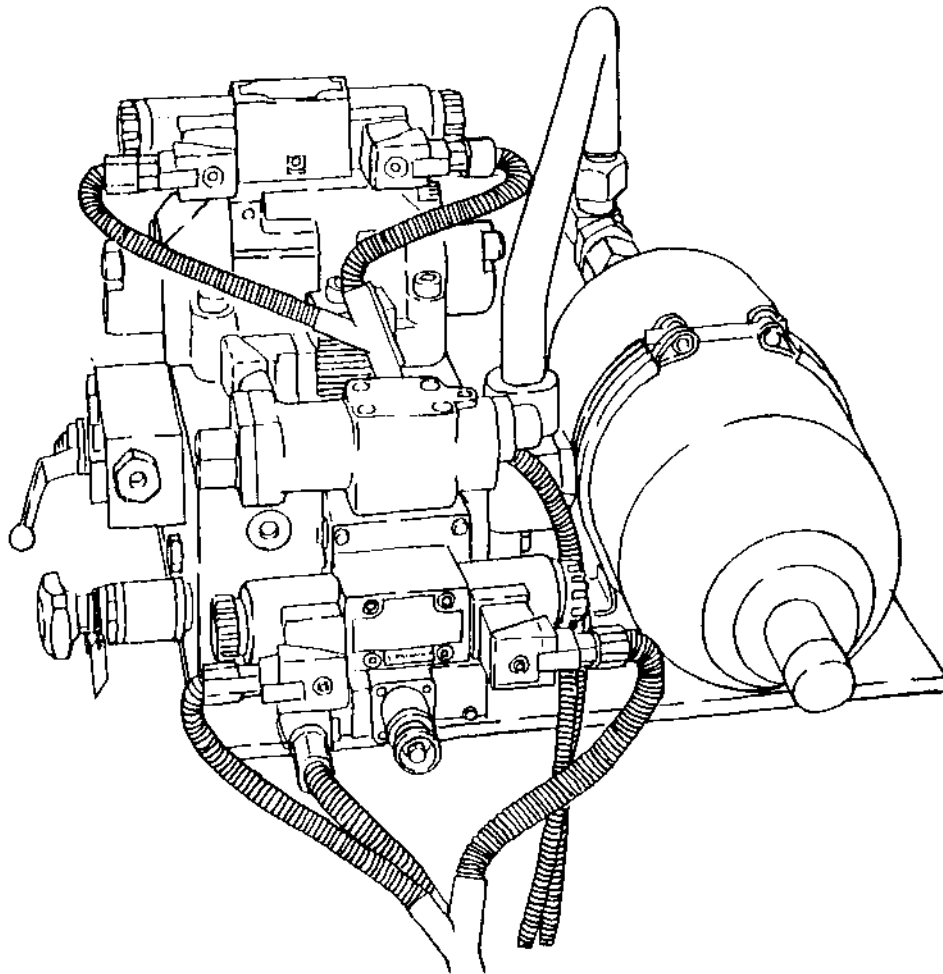
**XXT 42
PARTS
GROUP 20
FIGURE 13
PAGE 01**

THIS PAGE INTENTIONALLY LEFT BLANK.

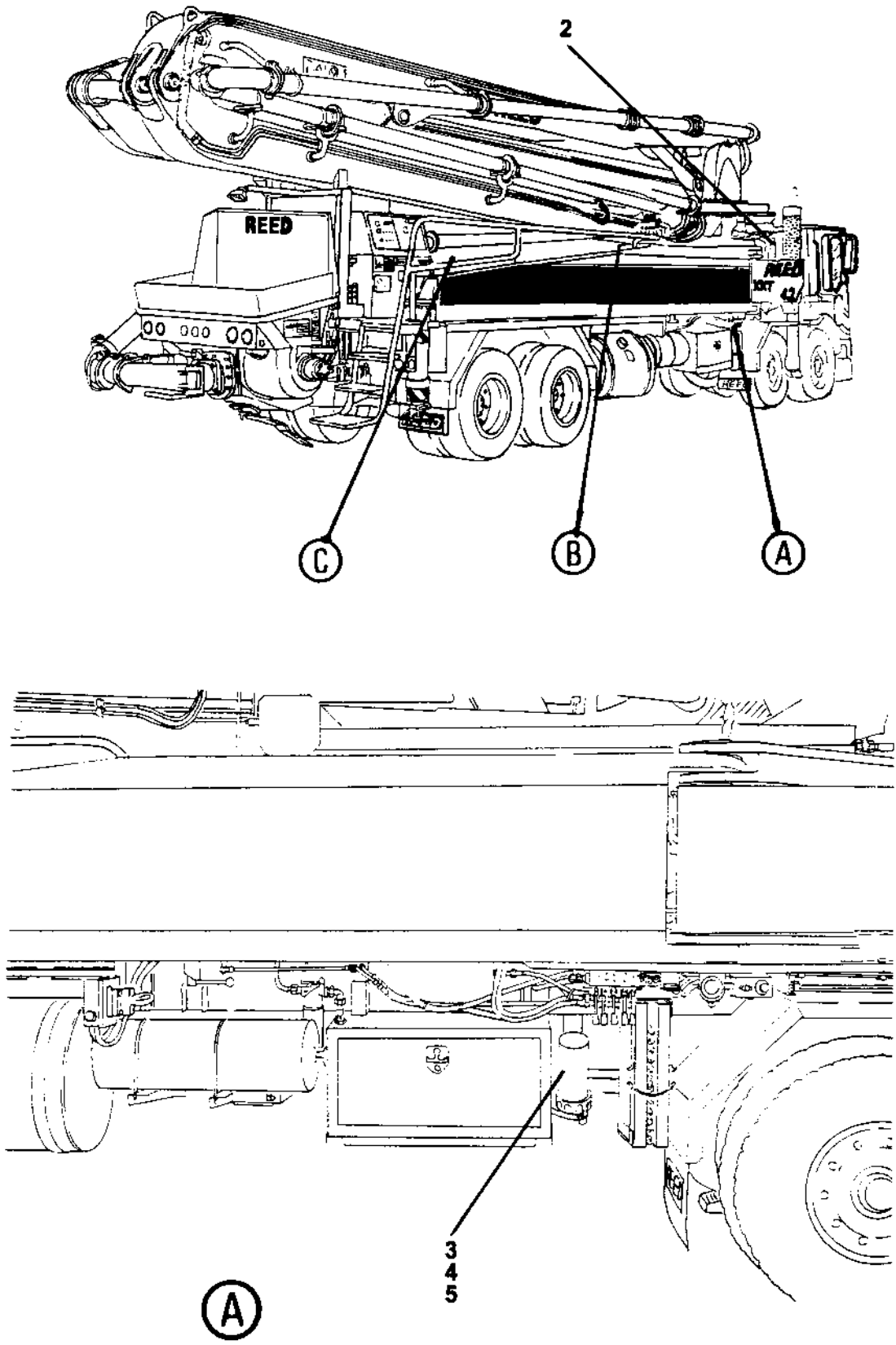


REED TRUCK MOUNTED CONCRETE BOOM PUMP MODEL **XXT 42** ILLUSTRATED PARTS MANUAL GROUP 30 HYDRAULIC TANK INSTALLATION CONTAINS THE FOLLOWING FIGURES:

- FIGURE 00** TABLE OF CONTENTS
- FIGURE 01** TANK INSTALLATION
- FIGURE 02** WATER SYSTEM GROUP
- FIGURE 03** WATER PUMP MOTOR ASSEMBLY
- FIGURE 04** WASH WATER PUMP ASSEMBLY



TANK INSTALLATION



ITEM NO.	REED'S PARTS NO.	DESCRIPTION					QTY
		1	2	3	4	5	
-1	30-01	Installation, Tank (See Group 10, Figure 01 for NHA)					Ref
2	30-02	• Group, Water System (See Group 30, Figure 02 for DET)					1
3	W-105526	• Assembly, Boom High Pressure Filter					1
4	W-105527	• • Element, Boom High Pressure Filter					1
5	W-105556	• Indicator, Boom High Pressure Filter Visual Clogging					1
6	800654	• Assembly, Hydraulic Oil Cooler					1
7	801430	• • Modification, Hydraulic Oil Cooler					1
8	801629	• • Manifold, Hydraulic Oil Cooler					1
9	801496	• Assembly, Suction Filter					1
10	801498	• • Element, Suction Filter					2
11	W-105578	• Valve, Ball					1
12	W-104847	• Assembly, Swing Tube Manifold					1
13	W-105573	• Assembly, Swing Tube Circuit Solenoid Valve					1
-13A	W-105571	• • Kit, Seal					1
14	W-105581	• • Pilot, Solenoid Valve					1
15	W-105576	• • • Coil, Swing Tube Circuit Solenoid Valve					2
16	W-105572	• Cartridge, Solenoid Valve					1
17	W-105605	• • Coil					1
18	W-105579	• Valve, HP Limiter					1
-18A	W-105580	• • Kit, HP Limiter Valve Seal					1
19	W-103616	• Accumulator					1
20	71460	• Kit, Accumulator Charge (Optional Item) (See Group 80, Figure 02 for REF)					1
21	73171	• Bracket, Accumulator					A/R
22	W-105582	• Valve, Proportional Pilot					1
23	W-105606	• • Coil					1
24	W-105581	• Assembly, Pump Control Solenoid Valve					1
-24A	W-105575	• • Kit, Seal					1
25	W-105576	• • Coil, Pump Control Solenoid Valve					2
26	W-104846	• Assembly, Pump Control Manifold					1
27	W-105570	• Cartridge, Relief Valve					1
-27A	W-105571	• • Kit, Seal					1
28	W-105577	• Cartridge, Check Valve					1
29	W-104691	• Plug					4

DASH (-) ITEM NOT ILLUSTRATED

