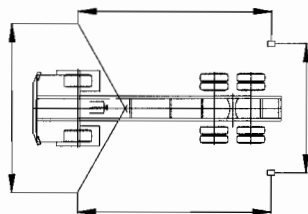


STABILITY TEST RECORD OUTRIGGER 37 XXT

OUTRIGGER DIMENSION:

6930 mm Nominal Dimension
mm/ft Actual Dimension

21.3 ft.
6500 mm
21'2" mm/ft
 ACTUAL
 DIMENSION

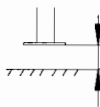


6800 mm
23'0" mm/ft
 ACTUAL
 DIMENSION
22.6ft

STABILITY WITH 125% WEIGHT:

CHECKED:

LDN



Outrigger		
FRONT	REAR	
<u>mm</u>	<u>60 mm</u>	RIGHT
<u>mm</u>	<u>65 mm</u>	LEFT

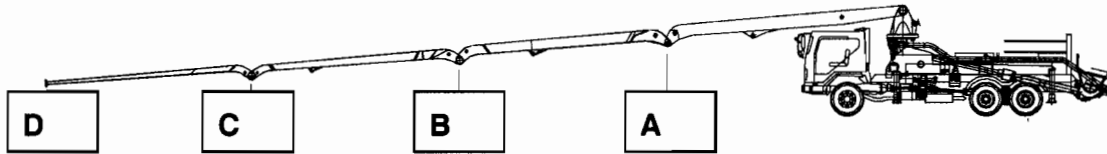
FUNCTION ACCORDING SIGN PLATE AND CONTROL OF LEAKAGE

	Open	Close	Leakage checked	
Right front jack cylinder	<i>DN</i>	<i>UL</i>	<i>UR</i>	
Right front telescope				
Right front Swing out				
Right back swing out				
Right back jack cylinder				
Left front jack cylinder				
Left front telescope				
Left front swing out				
Left back swing out				
Left back jack cylinder				

TEST RESULT:	
STABILITY APPROVED: <input checked="" type="checkbox"/>	STABILITY DISAPPROVED: <input type="checkbox"/>
DATE: <u>6-1-06</u>	NAME: <u>DUANE REMUS</u>
SIGNATURE: <u><i>Duane Remus</i></u>	

STABILITY / STRUCTURAL TEST RECORD 37 Meter (3x0,25)Waitzinger

WAI ORDER NUMBER:			
BOOM MANUFACTURE:		BOOM SER#:	
PEDESTAL MANUFACTURE:		PEDESTAL SER#:	
CUSTOMER:		TRUCK MODEL:	688 \$ mach



STABILITY TEST (WITHOUT END-HOSE) (125% Concrete)

227
DN. With pipeline / without endhose:
 351 kg 303 kg 319 kg 322 kg Checked : *DN*
 D C B A

Without pipeline / without endhose:
 433 kg 433 kg 451 kg 460 kg Checked :
 D C B A

STRUCTURAL TEST (WITHOUT END-HOSE)(130% Concrete/ 120 % Steal structure)

With pipeline / without endhose:
 425 kg 459 kg 579 kg 788 kg Checked :
 D C B A

Without pipeline / without endhose:
 507 kg 589 kg 711 kg 929 kg Checked :
 D C B A

	Element 1	Element 2	Element 3	Element 4	Rotation
Time up	80 sec	105 sec	70 sec	45 sec	147 sec
Time down					
Pressure A	280 bar	280 bar	330 bar	280 bar	160 bar
Pressure B	330 bar	330 bar	330 bar	330 bar	160 bar
Checked A					
Checked B					

Holding Valves Checked under 125 % load:



Overall look:

Checked:

TEST RESULT: <i>OK</i>	
APPROVED: <input checked="" type="checkbox"/>	DISAPPROVED: <input type="checkbox"/>
DATE: <i>6-1-06</i> <input type="checkbox"/>	NAME: <i>Dwaine Remus</i> <input type="checkbox"/>
SIGNATURE: <i>Dwaine Remus</i>	

JOB #	XYT-37-R-4		SN #	06-253	
	customer:				
VL	BOOM MAKE UP PIPE LENGTHS				
9015	ARM			LENGTH	
		A		91 1/2"	
		B		57 11/16"	
		B-C			
		C		57"	
		C-D			
		D		49 3/4	
		E			
	PIPE TYPE (Ultra III or Normal?)				
	TIP HOSE SIZE				
	SPECIAL ELBOWS				PART #
	Turret	A sect		801102	
	A sect	B sect			
	B sect	C sect		801104	
	C sect	D sect		1	
	D sect	E sect			
	DECK MAKE UP PIPE LENGTHS				
	PIPE			LENGTH	
		#1		7 1/2"	
		#2		10 1/2"	
		#3			
	SPECIAL ELBOWS			803027	
	TURRET PIPE			34 1/2"	
	DECK DELIVERY LINE COMPONENTS				PART #
	HOPPER ELBOW			803024	
	ELBOW 6"			803025	
	REDUCER			803026	
	SPECIAL TURRET ELBOW			803028	
	RADIO REMOTE SERIAL NUMBER			SERIAL #	
	RADIO REMOTE			735-0501781	
	CABLE REMOTE			004-0905	
	TRUCK			SERIAL #	
				1M2K189C15H028208	
	BOOM SIZE			SERIAL #	
	XYT-37-R-4			N7911	



VL9015

JOB NUMBER: _____

BUILD ORDER

SALE	CONSIGNMENT	DEMO	RENTAL	ORIGINATED BY:
CE 050406-003	X1- _____	X2- _____	X3- _____	QJ

CUSTOMER: Pope Foundations ⁷⁴⁰⁵²⁶ ORDER DATE: 4/22/06

MODEL: XXT37R COMPLETION DATE: _____

SERIAL #: 06-253 VIN #: _____

PART #: XXT37.4R-V02 (54F)

OPTIONS/ INSTRUCTIONS:

Mobile Outrigger feet
 4" TIP Hose with Reducer
 Use HBC RADIO →
 NOT NBB

Color: Red 50317

802977
 802977A
 802977B
 802977C
 802977D

BOOM came with new style Hopper, etc. PART# changed from XXT37.4R-V01
 to XXT37.4R-V02
 5/24
 ECN/150

(1) ENGINEERING (Specials Only): Sarkis K. 5/23/06 DATE

(2) PRODUCTION CONTROL: [Signature] 5/1 DATE

This machine has the 17 3/4 Swing Glinders ALL AROUND.

Copy to: PRODUCTION (Build Order Only)
 CUSTOMER SERVICE
 ACCOUNTING (Original attached to Order Acknowledgment)

TRUCK



SALES ORDER

TO:	Pope Foundations & Excavating	DATE:	4/28/06
ATTN:	Jamie Pope	QUOTE NUMBER:	PopeXXT37R-042606
	402 Walnut	QUOTE VALID:	30 Days
	Greenwood, MO 64034	PAYMENT TERMS:	Cash in Advance
CELL:	816-809-0960	AVAILABILITY:	8-10 weeks Subj. to Prior Sale
PHONE:	816-537-6905	DELIVERY TERMS:	FOB Chino, CA
FAX:	816-537-7071	FREIGHT:	Additional
	EQUIPMENT SUBJECT TO PRIOR SALE	SALESPERSON:	Mike Newcomb

REED Model XXT37.4R "Dragonfly" Truck-Mounted Concrete Boom Pump
Boom Specification:

- 120 ft (36.6 M) Vertical Reach, 107' (33 M) Horizontal Reach, Four-Section Boom
- Patented Dragonfly XXT Dragonfly Outriggers for Maximum operational range in all situations
- Section articulation (A / B / C / D): 83° / 180° / 180° / 230°; Siewing Range 370°
- 5" (125mm) Delivery Line (ConForms "Ultra 3")
- Unfolding Height of 27' 9" (8.48 M)
- Outrigger Spread L-R-Front of 20' 4" (6.2 M); L-R-Rear of 21' 8" (6.6 M)
- Proportional Controls for both Radio **AND** Hard Wire Remotes

Pump Performance:

- Max. Theoretical Output, Rod Side.....200 cu yds/hr (153 m³/hr)
- Max. Theoretical Concrete Pressure, Rod Side.....1300 psi (90 bar)
- Max. Aggregate Size.....2½" (63 mm)

Pump Specifications:

- S-Tube 9" x 8" (230 mm x 203 mm); Twin Shifting Cylinders
- Hard-Chromed Concrete Cylinders With Auto Lube, 9" x 79" (230 mm x 2000 mm)
- Twin Rexroth A4V125 Closed Loop Hydraulic System
- Suction Filters and Charge Pump Hydraulic Oil Filters
- 19.5 cubic feet (550 Liter) Harsh Mix Hopper with Auger Type Remixer
- REED Solid-State Black Box Controls
- Dual Hydraulic Oil Tanks, Two Tool Boxes

Truck Specifications (Typical Choice):

- Mack Truck MR688S with E7-350 Engine, 350HP; 215 Inch Wheelbase (400HP also available)
- Mack T-2090 9-Speed Transmission, Bronze Rear Suspension Bushing
- Air Brakes; 80-Gallon (303 Liter) Fuel Tank; Aluminum Wheels, Jake Brake, A/C, Radio
- Front Axle Mack FAW20 at 20,000 lbs., Rear Axle Mack S44 Multileaf at 44,000 lbs.

Optional Equipment:

Extras/Options

4" (102mm) diameter lip hose	XXXXXX 90 05-251	4"
Mobile outrigger feet, extra radio remote, change 37m auger seals		INCLUDED

Sales Summary:

Pump and Optional Equipment Price:	
Mack Truck	
Estimated Freight:	
Total Net Selling Price:	

Price includes start up training by REED factory technician at your location

Any Sales Tax, Fees, Permits, License, Registration, and Freight are additional costs

Accepted By:  Date: 4/27/06

Accepted By: _____

REED, LLC

REED, 13622 Oaks Ave., Chino, California 91710-7008 USA, 909-287-2100, Fax 909-287-2140, 888-779-7333

cc: Jean L
 CSF

X



X



VL9015

JOB NUMBER: _____

BUILD ORDER

SALE	CONSIGNMENT	DEMO	RENTAL	ORIGINATED BY:
CE 050406-003	X1- _____	X2- _____	X3- _____	<i>JD</i>

CUSTOMER: Pepe Foundations ⁷⁴⁰⁵²⁶ ORDER DATE: 4/22/06

MODEL: XXT37R COMPLETION DATE: _____

SERIAL #: _____ VIN #: _____

PART #: XXT37.4R-V02 ←

OPTIONS / INSTRUCTIONS:

Mobile Outrigger feet
 4" TIP HOUSE WITH REDUCER

Color:
Red 50317

Use HBC RADIO → { 8029 77A
8029 77B
8029 77C
8029 77D

NOT NBB

~~BOOM CAME WITH NEW STYLE HOPPER, etc. PART# changed from XXT37.4R-V01~~
 TO XXT37.4R-V02
 5/24
 ECN/150

(1) ENGINEERING (Specials Only): Sarkis K. 5/23/06 DATE

(2) PRODUCTION CONTROL: [Signature] 5/1 DATE

/

Pepe

Copy to: PRODUCTION (Build Order Only)
CUSTOMER SERVICE
ACCOUNTING (Original attached to Order Acknowledgment)



SALES ORDER

TO:	Pope Foundations & Excavating	DATE:	4/28/06
ATTN:	Jamie Pope	QUOTE NUMBER:	PopeXXT37R-042608
	402 Walnut	QUOTE VALID:	30 Days
	Greenwood, MO 64034	PAYMENT TERMS:	Cash in Advance
CELL:	816-809-0960	AVAILABILITY:	8-10 weeks Subj. to Prior Sale
PHONE:	816-537-6905	DELIVERY TERMS:	FOB Chino, CA
FAX:	816-537-7071	FREIGHT:	Additional
	EQUIPMENT SUBJECT TO PRIOR SALE	SALESPERSON:	Mike Newcomb

REED Model XXT37.4R "Dragonfly" Truck-Mounted Concrete Boom Pump

Boom Specification:

- 120 ft (36.6 M) Vertical Reach, 107' (33 M) Horizontal Reach, Four-Section Boom
- Patented Dragonfly XXT Dragonfly Outriggers for Maximum operational range in all situations
- Section articulation (A / B / C / D): 93° / 180° / 180° / 230°; Siewing Range 370°
- 5" (125mm) Delivery Line (ConForms "Ultra 3")
- Unfolding Height of 27' 9" (8.48 M)
- Outrigger Spread L-R-Front of 20' 4" (6.2 M); L-R-Rear of 21' 8" (6.6 M)
- Proportional Controls for both Radio **AND** Hard Wire Remotes

Pump Performance:

- Max. Theoretical Output, Rod Side.....200 cu yds/hr (153 m³/hr)
- Max. Theoretical Concrete Pressure, Rod Side.....1300 psi (90 bar)
- Max. Aggregate Size.....2½" (63 mm)

Pump Specifications:

- S-Tube 9" x 8" (230 mm x 203 mm); Twin Shifting Cylinders
- Hard-Chromed Concrete Cylinders With Auto Lube, 9" x 79" (230 mm x 2000 mm)
- Twin Rexroth A4V125 Closed Loop Hydraulic System
- Suction Filters and Charge Pump Hydraulic Oil Filters
- 19.5 cubic feet (550 Liter) Harsh Mix Hopper with Auger Type Remixer
- REED Solid-State Black Box Controls
- Dual Hydraulic Oil Tanks, Two Tool Boxes

Truck Specifications (Typical Choice):

- Mack Truck MR888S with E7-350 Engine, 350HP; 215 Inch Wheelbase (400HP also available)
- Mack T-2090 9-Speed Transmission, Bronze Rear Suspension Bushing
- Air Brakes; 80-Gallon (303 Liter) Fuel Tank; Aluminum Wheels, Jake Brake, A/C, Radio
- Front Axle Mack FAW20 at 20,000 lbs., Rear Axle Mack S44 Multileaf at 44,000 lbs.

Optional Equipment:

4" (102mm) diameter tip hose	XXXXXX 94 05-251	Extras/Options
Mobile outrigger feet, extra radio remote, change 37m auger seals		4" INCLUDED

Sales Summary:

Pump and Optional Equipment Price:	
Mack Truck	
Estimated Freight:	
Total Net Selling Price:	
Price includes start up training by REED factory technician at your location	

Any Sales Tax, Fees, Permits, License, Registration, and Freight are additional costs

Accepted By:  Date: 4/22/06

Accepted By: _____
 REED, LLC

REED, 13822 Oaks Ave., Chino, California 91710-7008 USA, 909-287-2100, Fax 909-287-2140, 888-779-7333

cc: Jean L
 CSF

For XXT37.4R-X-V01 Convert XXT37.4R-V02

Add Parts List

- 802977 - 1ea Radio
- 802977A - 1ea Cable Remote
- 802977B - 1ea Cable
- 802977C - 1ea cable
- 802977D - 1ea Cable.

- B-175200R1 - 1ea Pumping Train - PK1316
- B-225090 - 1ea Cover MK4972
- B-253080 - 1ea Agitator GC

Return to stock

- W-105982 1ea Radio Remote Control
- W-105983 1ea Cable Remote
- B-175200 1ea Pumping Train

802975 803031

This machine has the $17\frac{3}{4}$ Swing Cylinders ALL AROUND.

CHASSIS INSPECTION CHECK LIST

MFG MODEL VIN

DESCRIPTION	✓	DESCRIPTION	✓	DESCRIPTION	✓
A-CAB		• Mirrors RH & LH		F-PAINT	
• Lift/Tilt w/Pump		• Parking Brake w/Light		• Cab Ext-Mack White	
• Cigar Lighter		• Mud Flaps-24"-Frnt Fender			
• Dome Light w/SW		• Radio AM-FM			
• Door-Slide Type Window		• Antenna-Roof Mtd.		G-INFORMATION	
• Fenders-Cab		• Seat-Driver Air Susp.		• Manuals-Protection Plan Service	
• Floor Mats-Rubber		• Seat-Rider Fixed		• Safety Kit	
• Gauges		• Seat Belts-Lap & Shoulder			
• Dual Air Pressure		• Turn Signal Switch - Manual			
• Voltmeter				H-MISCELLANEOUS	
• Eng. Coolant Temp.				• Exterior Paint Damage	
• Eng. Oil Pressure				• Window Damage	
• Fuel Level				• Dents	
• English Display		B-FRAME-FUEL TANK			
• Speedometer w/Trip Odometer		• Bumper Channel Type Extended 63"			
• Eng. Tach w/ Hourmeter		• Towing Device Frt-Pin		I-DRIVE TRAIN	
• Glass-Tinted Windows		• Fuel Tank LH 80 Gal RD.		• MACK MD209 Transmission	
• Glove Box				• Range selector valve tight	
• Grab Handles – Ext.					
• RH & LH Behind Door		C-FRONT AXLE			
• Grab Handles – Int.		• Capacity 20000 lbs			
• Windshield Post RH-LH		• Tires Tubeless Radial		J-COMMENTS	
• Instr. Panel RH		• Size 425/65R 22.5 18S			
• Hi-Beam Indicator Light		• Wheels-Alum Disc 10 Hole			
• Horn					
• Air Twin Trumpet					
• Electric Single Tone		D-REAR AXLE-TANDEM			
• Lights		• Capacity 44000 lbs			
• Marker & Clearance (7)		• Tires (8) 11R-22.5-14G			
• Side Markers		• Air Brakes			
• Turn Signals-Front		• Wheels-Alum Disc-10 Holes			
• Headlights (2) Conv 7" RD					
• Rear (2) Stop, Direct, Back up		E-ELECTRICAL			
• Signal Flasher Type		• Back up Alarm			
• Interior Trim – White		• Battery Box Covers			
• Low Air Indicator Light & Buzz		• Daytime Running Lights			

Odometer Reading

Hourmeter Reading

Inspected By

Date

XTR SN 06-253

~~* HYD TANK connecting line in wrong Port.~~

~~* Filter housing loose~~

~~* GREASER empty~~

~~* HYD OIL TELLS 46 T IN IT.~~

~~* PTO LIGHT DOES NOT WORK IN THE CAB~~

~~* E-STOP CIRCUIT NOT WORKING~~

~~* FIX WIRES ON E-STOP BOX ON PASSENGER SIDE THE
OUTRIGGER ONE. 3 WIRES.~~

~~* RPM BACKWARDS.~~

~~* RPM GO ALL AWAY UP ON IT'S ON~~

~~* HYD. CY. LOOP HOSE BY CROSS OVER BLOCK LOOSE
BOTH SIDE OF CYL. LOOSE~~

~~* BOOM VALVE ^{outrigger} NOT WORKING out of main panel switch.
WRONG BOOM PUMP ON IT~~

~~* F-8 FUSE BLOWED TWICE. ?~~

~~* AGITATOR Switch wire wrong.~~

~~* WATER PUMP NOT ROTATING CHECK IT.
PUMPED BACKWARDS~~

~~* BOOM VALVE PACK & TUBES HAD PLASTIC CAPS INSTED
OF STEEL PLUGS.~~

* TRUCK DAY Light DRIVER SIDE
NOT WORKING.

* ~~BOOM VALVE BY-1 COIL HOUSING LATCH BROKEN~~
~~Replaced it.~~

* RADIO Remote VOLUME NEEDS to be set.

* TRUCK PUMPING UNDER LOAD TOO MUCH VIBRATION
CAN FEEL IT AND HEAR IT.

* PRESSURE GAUGES MISSING.

* PRESSURE HOSES $\frac{1}{2}$ PIPE'S MISSING ON CROSS MEMBER
SO they can rest.

FILTERS start at 9:00 to 11:00 AM



WATER TEST RECORD SHEET

TRUCK MOUNTED CONCRETE BOOM PUMP

INSPECTED BY RV DATE 5/5/06

06-253

MACHINE MODEL XXT37R

S/N VL-9015

TIME	AMB TEMP	HYD TEMP	ENG TEMP	HYD PRESSURE	ENG RPM	VOL SETTING	STROKES P/MIN
2:45	71°	110°	200°	90 BAR	1300	6 5/8	14
3:00	71°	120°	200°	90 BAR	1300	6 5/8	14
7:00	58°	87°	200°	80 BAR	1300	7 1/2	19
7:15	59°	108°	210°	130 BAR	1400	6 1/2	17
8:00	60°	120°	218°	110 BAR	1600	6 3/4	13
8:15	61°	122°	218°	110 BAR	1600	6 3/4	13
8:30	62°	125°	218°	110 BAR	1600	6 3/4	13
9:00	63°	125°	206°	200 BAR	FULL	6	11
9:15	64°	132°	205°	200 BAR	F	6	11
10:00	65°	129°	220°	150 BAR	F	5	9
10:15	66°	127°	218°	150 BAR	F	5	9
10:30	66°	125°	217°	150 BAR	F	5	9
10:45	66°	129°	210°	220 BAR	F	7	12
11:00	67°	134°	205°	220 BAR	F	7	12
11:15	67°	139°	205°	220 BAR	F	7	12
11:30	68°	138°	205°	170 BAR	F	5 1/2	10
12:15	69°	120°	200°	170 BAR	F	5 1/2	10
12:30	70°	128°	210°	170 BAR	F	5 1/2	10
12:45	71°	129°	220°	120 BAR	F	4 1/2	9
1:00	71°	132°	212°	240 BAR	F	6 3/8	11
1:15	71°	141°	207°	240 BAR	F	6 3/8	11

LX 43
MAXWELL

1

2

3

4

5

REED
ALL MODELS

QUALITY ASSURANCE INSPECTION CHECK LIST
TRUCK MOUNTED CONCRETE PUMP

PAGE 1 OF 1

INSPECTED BY R

DATE _____

Q.C. & PUMP OPERATIONAL TEST

WORK ORDER VL 9015

DESCRIPTION OF ITEM INSPECTION	OK INIT.	CORRECTION MADE
1. Q.C. INSPECTION PACKAGE		
All forms in package		
All shortages in package		
2. BUILD ORDER REVIEW		
Truck built per build order		
Options installed per build order		
Oil type required		
Defeciencies noted		
3. PRELIMINARY WALK AROUND	<u>RV</u>	
Components installed properly		
Proper hose & wire routing		
Bolts & fittings tight		
Defeciencies corrected		
4. FLUID LEVELS	<u>RV</u>	
Engine oil		
Coolant		
Boom tank hydraulic oil		Type <u>TELLUS 46 T</u>
Main tank hydraulic oil		Type <u>TELLUS 46 T</u>
Auto lube grease		
Flush box - Oil & water		
5. PRE START UP	<u>RV</u>	
Filling & bleeding of hydraulic system		

SHORTAGES	CORR INIT.

COMMENTS

GREASER SET AT

RUN TIME 5 MIN RED SET ON #3 WITH BRIDGES ON MIN TO MIN

OFF TIME 22 MIN BLUE SET ON #7

1/16 to

REED
ALL MODELS

QUALITY ASSURANCE INSPECTION CHECK LIST
TRUCK MOUNTED CONCRETE PUMP

INSPECTED BY RV DATE 5/4/06

Q.C. & PUMP OPERATIONAL TEST

WORK ORDER VL 9015

DESCRIPTION OF ITEM INSPECTION	OK INIT.	CORRECTION MADE
6. FILTRATION OF SYSTEM (2 Hour time period)	RV ↓	
7. R.P.M. CHECK 800 Idle 1600 Pumping	RV ↓	900 1600
8. CHARGE PRESSURE ADJUSTMENT 34 Bar - (+0 -1)	RV ↓	
9. PUMP CENTERING ADJUSTMENT	RV	OK
10. MAXIMUM PRESSURE CHECK 345 Bar	RV ↓	340 BAR
11. BLACK BOX ADJUSTMENT 6-19 Bar	RV ↓	
12. A-10 PUMP ADJUSTMENT Load sense screw fully in Pressure compensator 190 Bar	RV ↓	190 BAR
13. REMIXER PRESSURE ADJUSTMENT 190 Bar	RV ↓	Pre-seted to 250 BAR
14. COOLER RELIEF ADJUSTMENT 30 Bar	RV	Pre-seted

SHORTAGES	CORR INIT.

COMMENTS

Q.C. & PUMP OPERATIONAL TEST

WORK ORDER **VL 9015**

DESCRIPTION OF ITEM INSPECTION	OK INIT.	CORRECTION MADE
15. FLUSHING VALVE ADJUSTMENT Should be 25.8 G.P.M. (+0-.5) Evenly balanced	RV 	25.5
16. MAXIMUM CYCLES PER MINUTE CHECK 30 (+ or - 1)		Main Control Box --- 27 S.P.M Radio Control ---- 27 S.P.M Cable Remote--- 27 S.P.M
17. CYCLE TEST 8 Hour time period Documentation of test sheets	RV 	
18. WATER PUMP ADJUSTMENT Relief set to attain maximum flow without swelling of hose when nozzle is closed	RV ↓	
19. BOOM VALVE PRESSURE ADJUSTMENT 340 Bar--- (XT-32 & XT-36) 350 Bar--- (XXT-42)	RV 	350 BAR PRE-SET
20 BOOM RADIO CONTROL PARAMETERS CHECK.		
21 OUTRIGGER PRESSURE ADJUSTMENT Main block relief--250 Bar (+or - 1) XT-36 Extension relief--60 Bar (+or - 1) XXT-32 or 42 Extension relie XXT-32 or 42 front swing out relief--60 Bar (+or - 1)	RV	120 ON N.O.S. 200 ON O.S. (SEE NOTE BELOW)

SHORTAGES	CORR INIT.

COMMENTS

NOTE...REFER TO TEST PROCEDURE WORK INSTRUCTIONS FOR ADJUSTMENT METHODS.
NEW O/RIGGER CONTROL VALVES (PIN 802727 + 802728)
REQUIRE EXTENSION RELIEF ADJUSTED TO 120 BAR.
7-3-03 (FIRST VALVES USED) XT-36