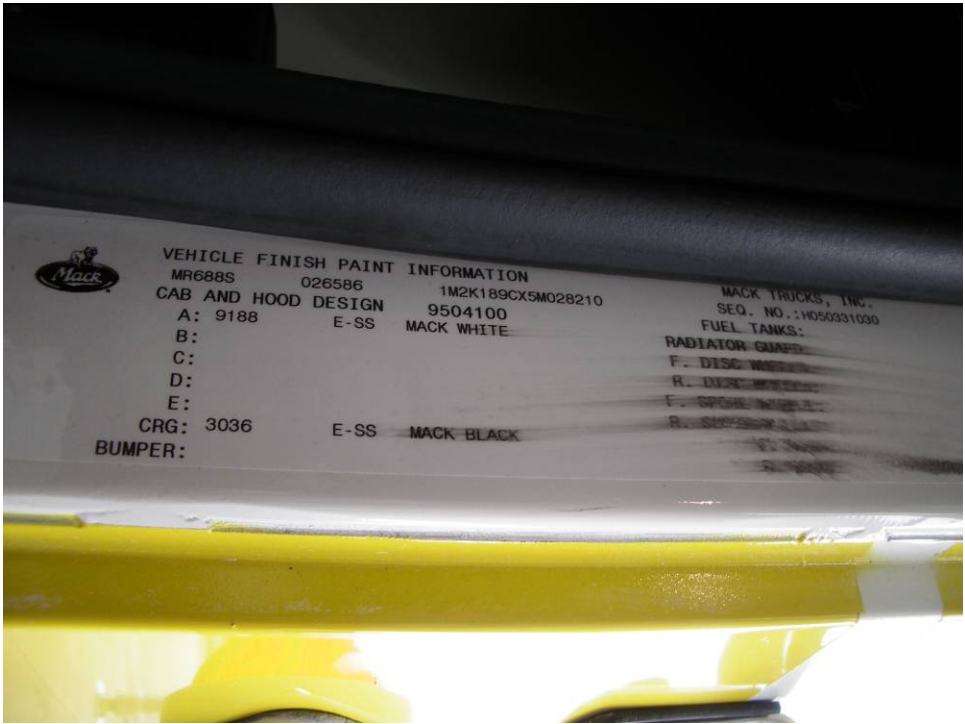


Serial Number 06 – 256  
XT36 – 160  
Final Assembly Pictures and Notes













**Paßrohrlängen / Förderleitung**  
**Delivery line / fitting pipe**

max. Rohrgewicht max. weight pipe	17	kg/m	Rohr Arm 1 pipe boom 1	2070	mm
max. Gewicht Förderbogen max. weight elbow	14	kg	Rohr Arm 2 pipe boom 2	1220	mm
Rohr Podest pipe decking	1730	mm	Rohr Arm 3 pipe boom 3	1010	mm
Rohr Turm pipe tower	690	mm	Rohr Arm 4 pipe boom 4	1265	mm
Rohr pipe	30	125	Rohr Arm pipe boom		mm

WAI 106032













