

Serial Number 06 – 249  
XT36 – 160  
Final Assembly Pictures and Notes



**REED**  
13822 OAKS AVENUE  
CHINO, CA 91710 USA

PHONE (909) 287-2100  
FAX (909) 287-2140

MODEL **XT36-160** SERIAL NO. **06-249-XT36-160**

MATERIAL PRESSURE **335** PSI **37** BAR

HYDRAULIC PRESSURE **4785** PSI **330** BAR

ENGINE / PTO ELECTRIC MOTOR **1650** RPM **24VDC** VOLTS

PN 86636

ParaBar

VEHICLE FINISH PAINT INFORMATION

MR688S	026586	1M2K189C45M028204
CAB AND HOOD DESIGN	9504100	
A: 9188	E-SS	MACK WHITE
B:		
C:		
D:		
E:		
CRG: 3036	E-SS	MACK BLACK

BUMPER:

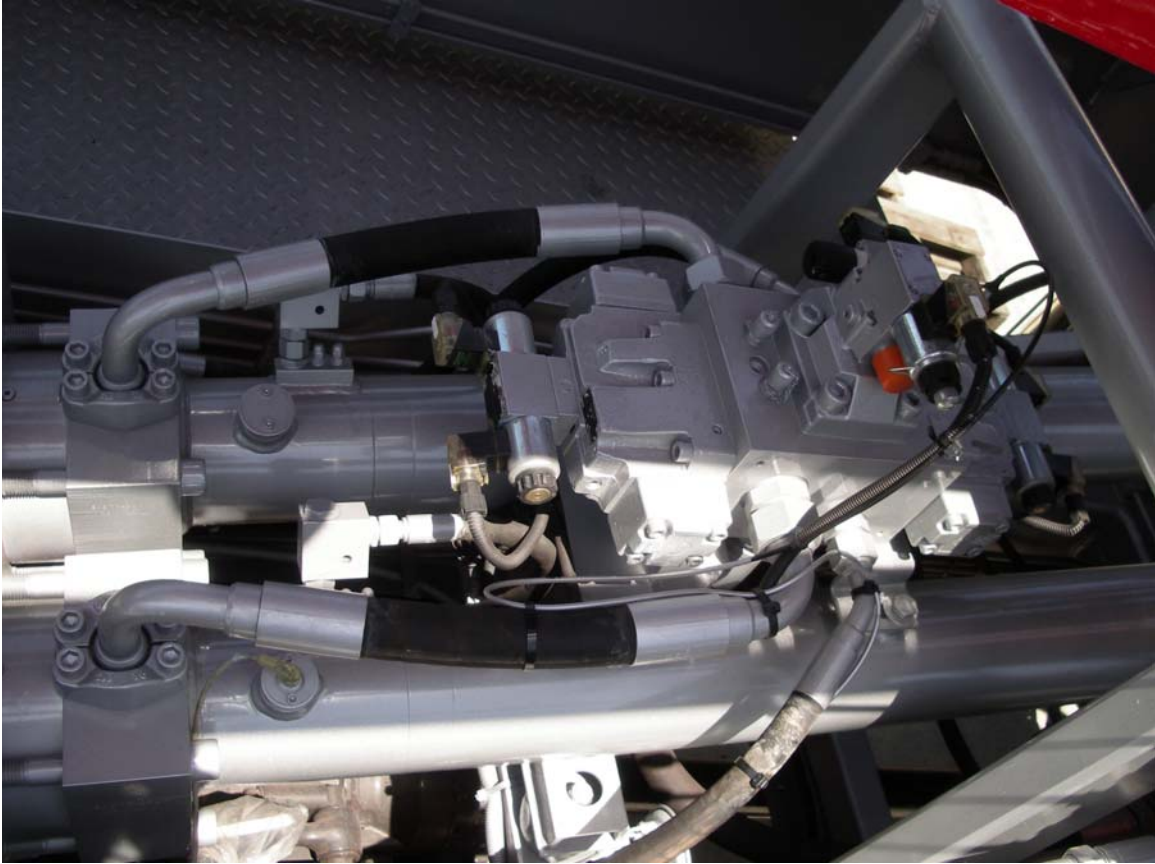
MACK TRUCKS, INC.  
SEQ. NO.: H050328012

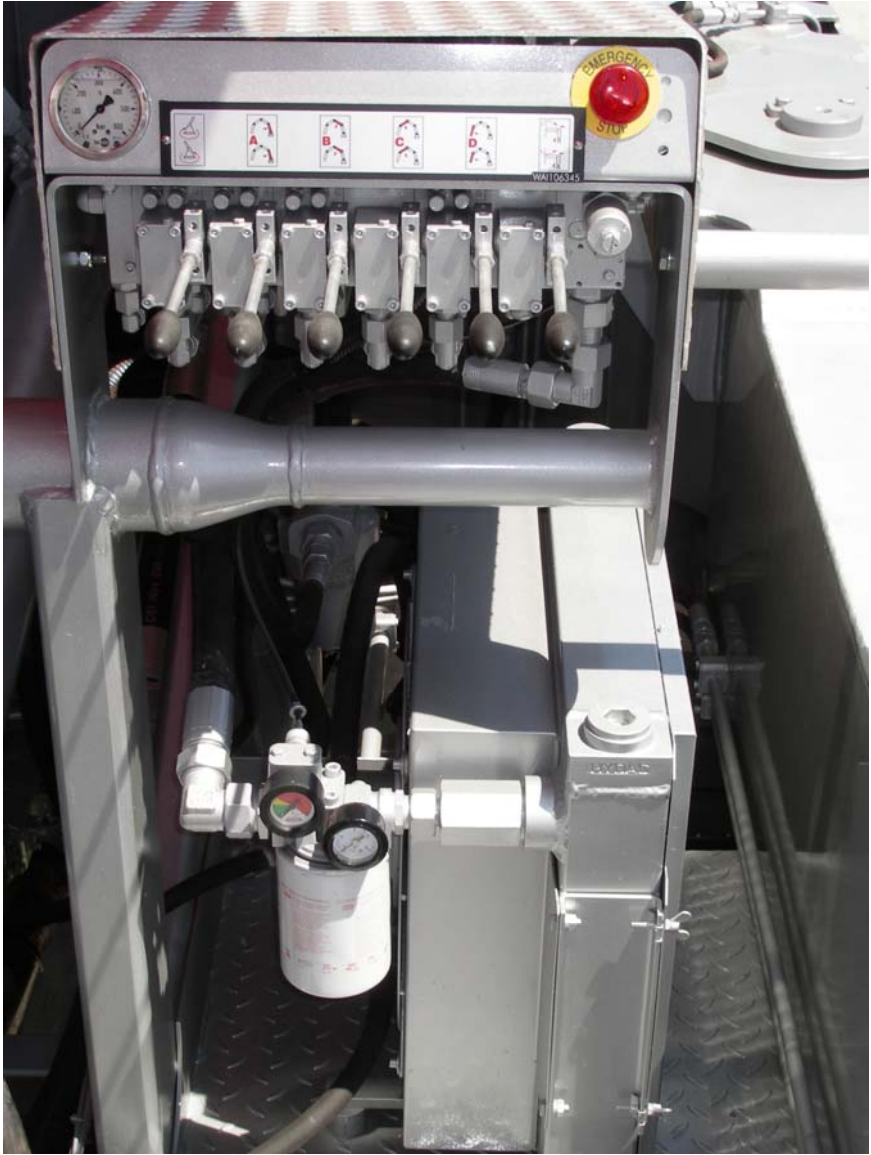
FUEL TANKS:  
RADIATOR GUARD:  
F. DISC WHEELS:  
R. DISC WHEELS:  
F. SPOKE WHEELS:  
R. SPOKE WHEELS:  
F. RIMS:  
R. RIMS:













Pedestal Plate