

OPERATING INSTRUCTIONS

Anlagennummer
9905849996

*CABLE REMOTE CONTROL
98-172-5736
SHAWN'S CONCRETE PUMPER*

PNN[®] SYSTEM

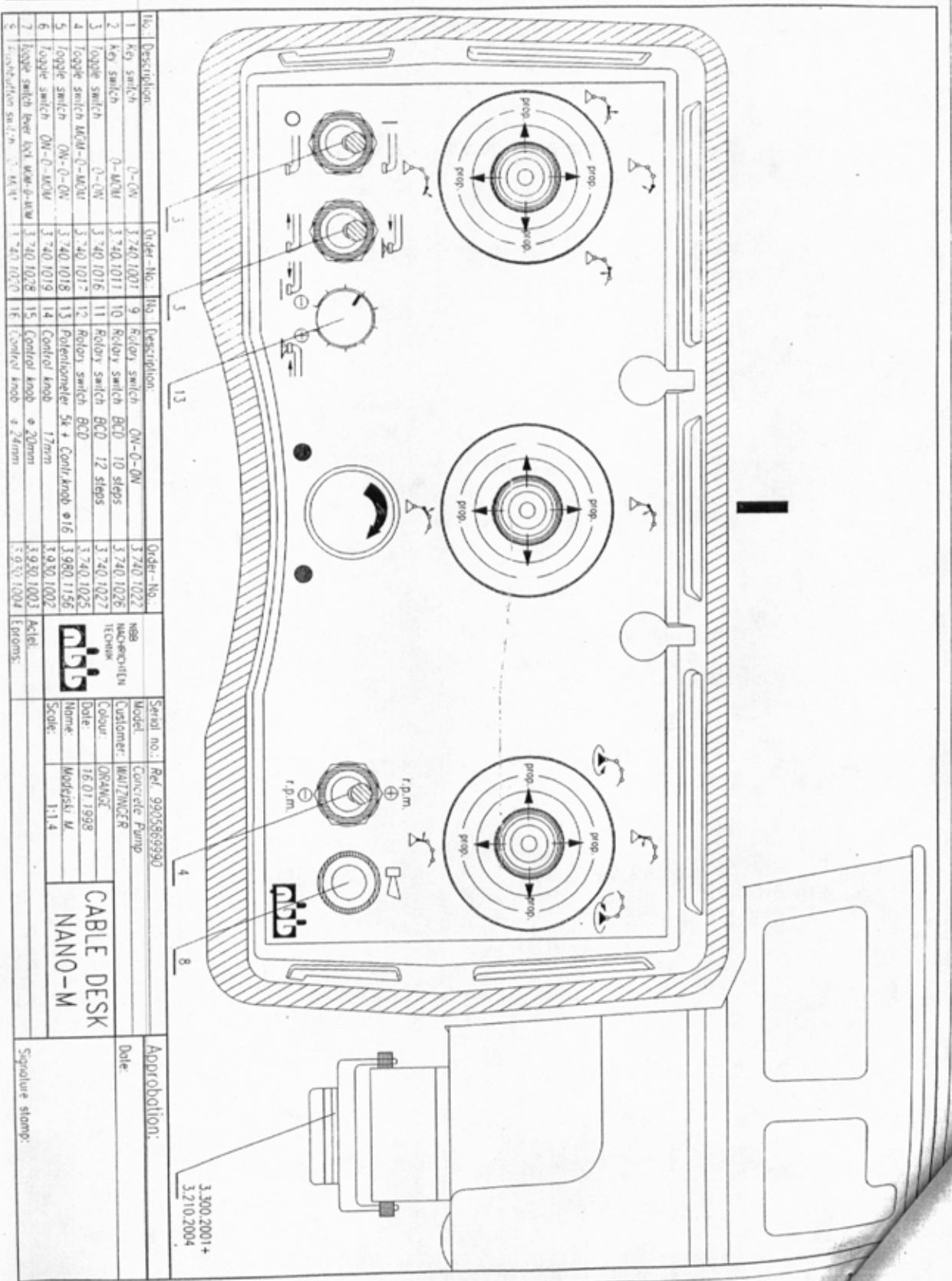
PNN BUS.3 PNN BUS.5

Nano Nano-Vario

Nano-S.A2.HC

NBB
NACHRICHTEN
TECHNIK





No.	Description	Order-No.	No.	Description	Order-No.	Serial no.:	Ref.:
1	Key switch	3 740 1001	9	Rotary switch	3 740 1022	MA17/MCER	Concrete Pump
2	Key switch	3 740 1011	10	Rotary switch BCD	3 740 1026	ORANGE	16.01.1998
3	Toggle switch	3 740 1016	11	Rotary switch BCD	3 740 1027	Moldyski, M.	1:1.4
4	Toggle switch	3 740 1017	12	Rotary switch	3 980 1156		
5	Toggle switch	3 740 1018	13	Potentiometer	3 930 1002		
6	Toggle switch	3 740 1019	14	Control knob	3 930 1003		
7	Toggle switch	3 740 1028	15	Control knob	3 930 1004		

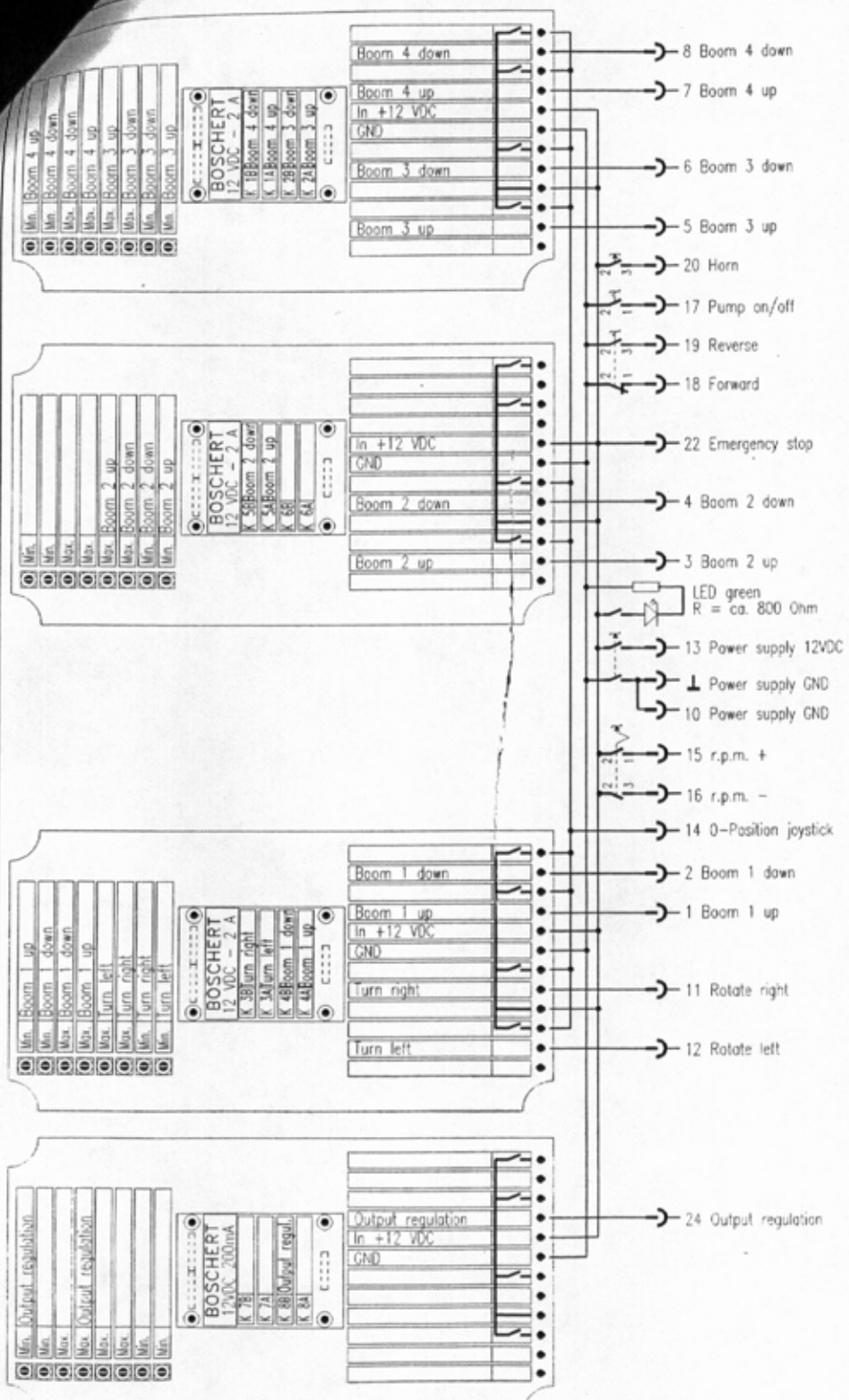
No.	Description	Order-No.	No.	Description	Order-No.
1	Key switch	3 740 1001	9	Rotary switch	3 740 1022
2	Key switch	3 740 1011	10	Rotary switch BCD	3 740 1026
3	Toggle switch	3 740 1016	11	Rotary switch BCD	3 740 1027
4	Toggle switch	3 740 1017	12	Rotary switch	3 980 1156
5	Toggle switch	3 740 1018	13	Potentiometer	3 930 1002
6	Toggle switch	3 740 1019	14	Control knob	3 930 1003
7	Toggle switch	3 740 1028	15	Control knob	3 930 1004

Serial no.:	Ref.:	Model:	Customer:	Colour:	Date:	Name:	Modyski, M.	Scale:
	9905869990	Concrete Pump	MA17/MCER	ORANGE	16.01.1998	Moldyski, M.		1:1.4

Approval:	Date:

3 300 2001+
3 210 2004

PNN BA
Nano S.A.
Nano Na



Serial no.: Ref. 99056999?	Model: Concrete pump 4 boom	Customer: Waitzinger	Colour: 19.07.1998	Home: Malytski, M	Scale: 1:1,4
Amount:	NBB	MACHRICHTEN	TECHNIK	Actel Egeroms.	
Plug-and-socket connection and cable Part-no.:	---	---	---	---	---
System-plug	---	---	---	---	---
Insert	---	---	---	---	---
Cable loop	---	---	---	---	---
Cable length	---	---	---	---	---
Clutch housing	---	---	---	---	---
Insert	---	---	---	---	---
Plug (coupling)	---	---	---	---	---
Insert	---	---	---	---	---

**CABLE DESK
WIRING DIAGRAM**



Nano S.A2.HC
Nano Nano.Vario
PNN BUS.3 PNN BUS.5

PNN SYSTEM

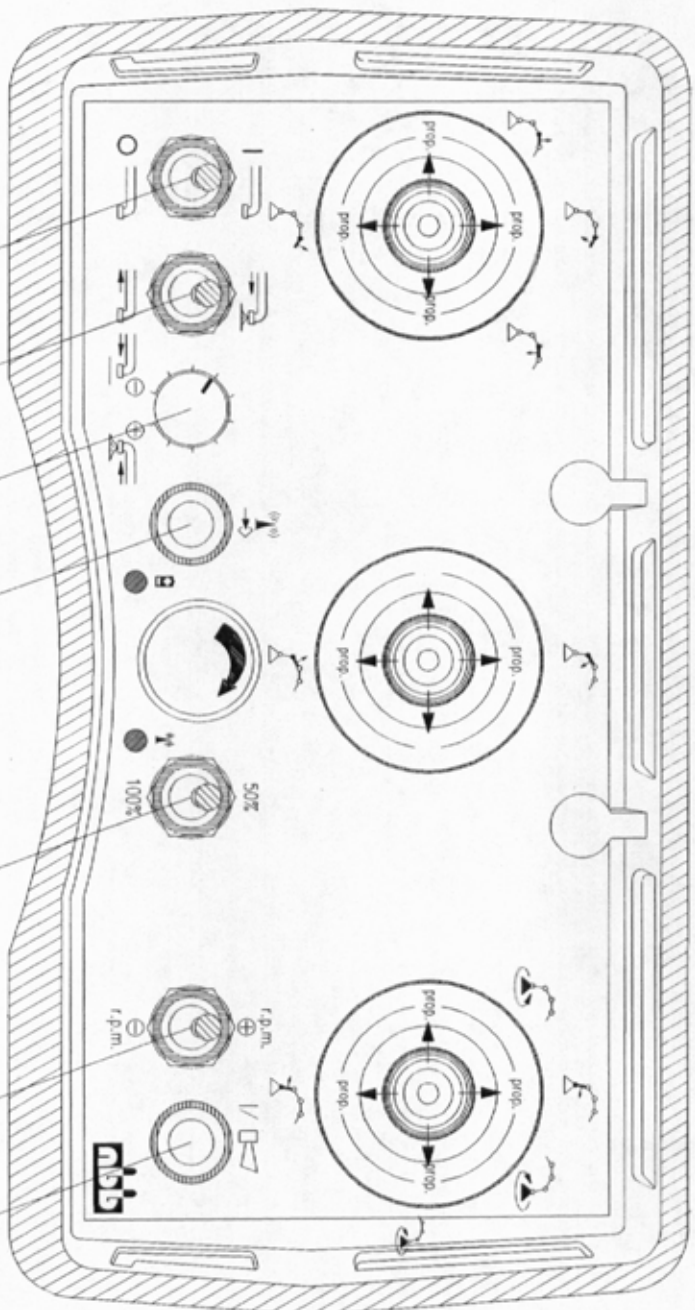
Anlagennummer
9997977197

98-172-5730

OPERATING INSTRUCTIONS

RADIO REMOTE CONTROL





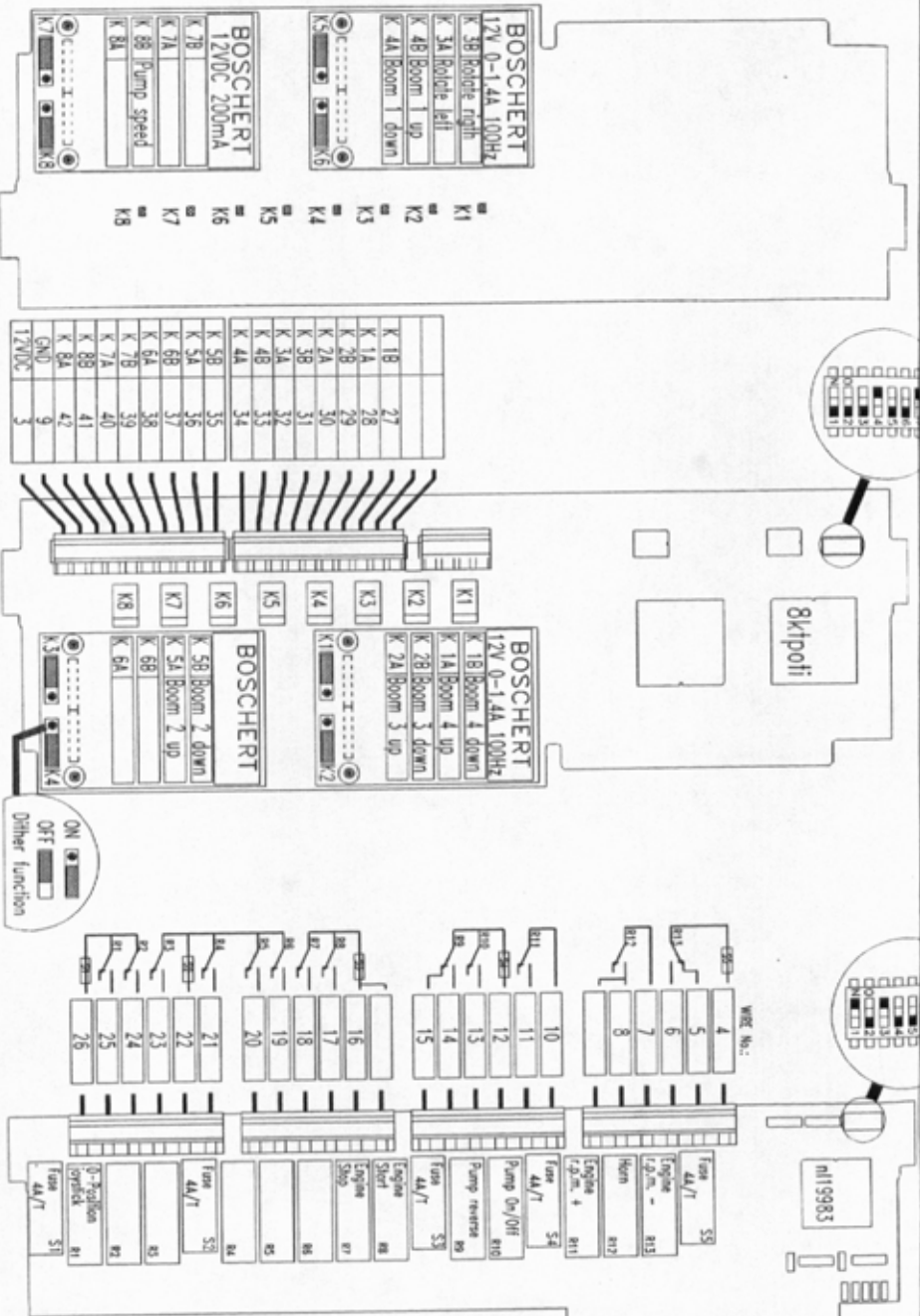
No.	Description	Order-No.	No.	Description	Order-No.	Art.-tel.	Eprouv.
1	key switch	0-0N	9	Rotary switch	ON-0-0N	3.740.1022	
2	key switch	0-MOV	10	Rotary switch	BCD 10 steps	3.740.1026	
3	toggle switch	0-0N	11	Rotary switch	BCD 12 steps	3.740.1027	
4	toggle switch	MOV-0-MOV	12	Rotary switch	BCD	3.740.1025	
5	toggle switch	ON-0-0N	13	Potentiometer	5k + Control knob ø16	3.980.1156	
6	toggle switch	ON-0-MOV	14	Control knob	17mm	3.920.1002	
7	toggle switch	lock MOV-0-MOV	15	Control knob	ø20mm	3.920.1003	
8	Pushbutton switch	0-MOV	16	Control knob	ø24mm	3.920.1004	

Serial no.: 9997977197	Model: Concrete Pump	Customer: WALTINGER	Colour: ORANGE	Date: 16.01.1998	Name: Wadsworth M	Scale: 1:1.4
------------------------	----------------------	---------------------	----------------	------------------	-------------------	--------------

Approval:	Date:
Signature stamp:	



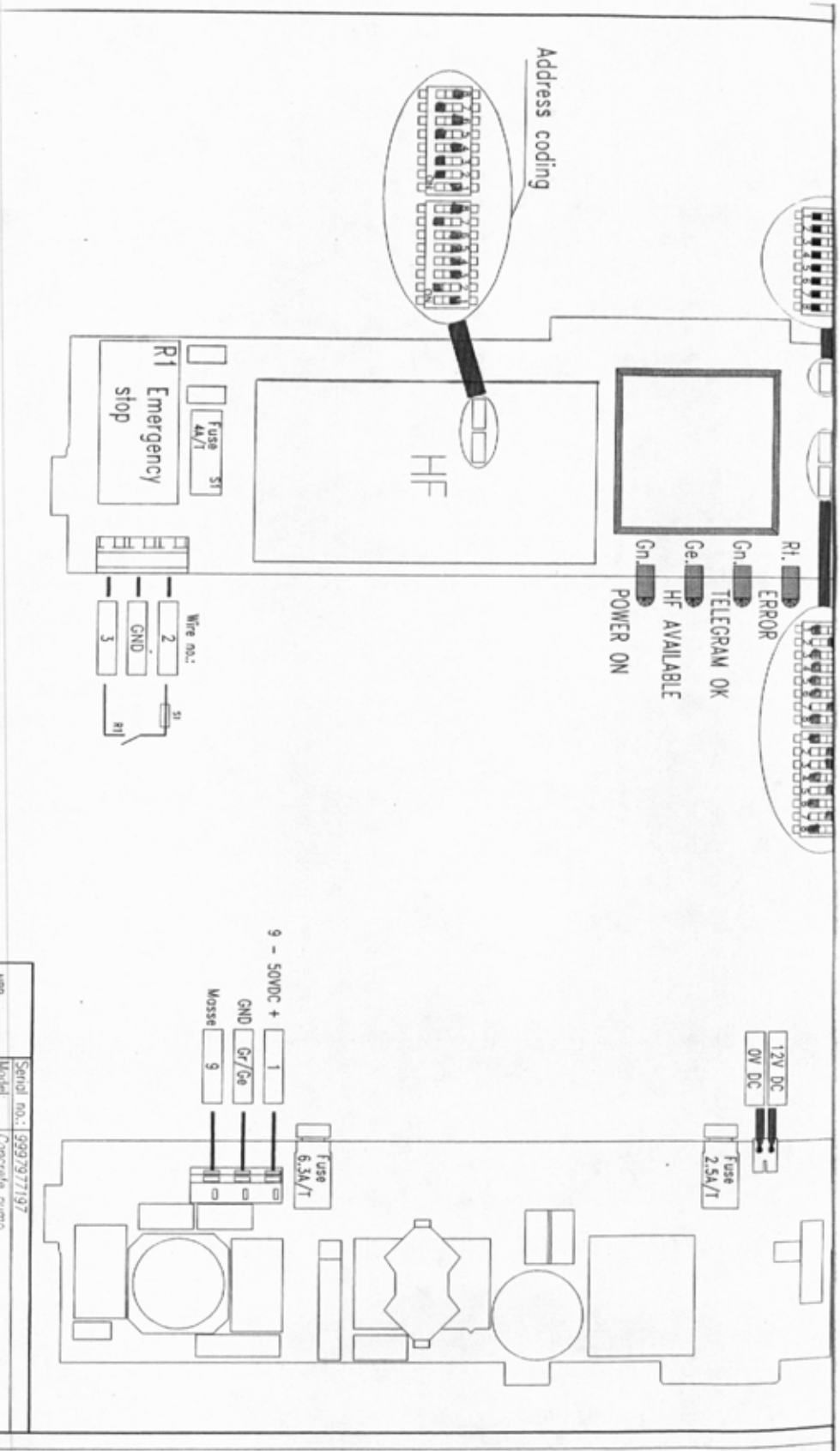
TRANSMITTER
NANO-M




Plug-and-socket connection and cable	Part-no.	Amount
System-Plug	---	---
Insert	---	---
Cable loop	2.250 *0*0	1
Cable length	ca.0.5m	---
Clutch housing	3.300.2200	1
Insert	3.210.2000, 3.210.2001	1
Plug (coupling)	3.300.2107	1
Insert	3.210.2002, 3.210.2003	1

NBB MACHINERIE TECHNIEK	Model: Concrete pump
Customer: Holzinger	Serial no.: 9992977197
Colour:	
Date: 16.01.1998	
Name: Moderski, M	
Scale: 1:1.4	
Adel: Sklopic, m19983	
Forms:	

RECEIVER
WIRING DIAGRAM



	
NBB	RECEIVER
HAUHECHTEN	WIRUNG DIAGRAM
TECHNIK	
Customer: Woltzinger	
Model: Concrete pump	
Serial no.: 9997977197	
Colour:	
Date: 16.07.1998	
Home: Modersb. M.	
Scale: 1:1.4	
Actel:	
Fragns:	

CONTROL CABLE CONNECTING PLAN

Serial no.: 9997977197
 Model: Concrete pump
 Wiring diagram no.:
 Producer:
 Date: 17.01.1998
 Name: Madejski M.
 Relay board code: 1, 3, 8

System-plug-no.:	---	Clutch housing-no.:	3.300.2200
Insert-no.:	---	Insert-no.:	3.210.2000
Insert-no.:	---	Insert-no.:	3.210.2001
Insert-no.:	---	Plug-no.:	3.300.2107
Insert-no.:	---	Insert-no.:	3.210.2002
Cable length.:	ca. 0,5 m	Insert-no.:	3.210.2003
Cable loop-no.:	2.250.7070	Cable length.:	ca. 10m

RECEIVER	CONTROL CABLE		SYSTEM
Terminal strip no.:	Function:	Wire-No.:/Pin-No.:	Terminal strip or plug socket:
<div style="border: 1px solid black; padding: 2px; display: inline-block;"> 9-50VDC 12VDC </div> 1	Power supply 12VDC	1 / 13	1
9	Power supply 0VDC	9 / 9	9
2	Common	2 / 13	1
Emergency stop	Emergency stop	3 / 2	2
4	Common	4 / 13	3
R 13	Engine r.p.m "-"	5 / 4	4
R 13	Engine r.p.m "-"	6 / 5	5
7	Common	7 / 13	3
R 12	Horn	8 / 6	6
10	Common	10 / 13	3
R 11	Engine r.p.m "+"	11 / 7	7
12	Common	12 / 9	9
R 10	Pump on/off	13 / 8	8
R 9	Pump reverse	14 / 10	10
R 9		15 / --	--
16		16 / --	--
R 8		17 / --	--
R 7		18 / --	--
R 6		19 / --	--
R 5		20 / --	--
R 4		21 / --	--
22		22 / --	--
R 3		23 / --	--
R 2		24 / --	--
R 1	"0" - position joystick	25 / 11	11
26	Common	26 / 13	3

Serial no.: 9997977197
 Model: Concrete pump
 Relay board code: 4, 7, 8

RECEIVER
 Terminal strip no.:

CONTROL CABLE
 Function: Wire-No./Pin-No.:

SYSTEM
 Terminal strip or plug socket:

BOSCHERT 0 - 1,4A 12VDC	27	K1B: Boom 4 down	27 / 16	16
	28	K1A: Boom 4 up	28 / 17	17
	29	K2B: Boom 3 down	29 / 18	18
	30	K2A: Boom 3 up	30 / 19	19
BOSCHERT 0 - 1,4A 12VDC	31	K3B: Rotate right	31 / 20	20
	32	K3A: Rotate left	32 / 21	21
	33	K4B: Boom 1 up	33 / 23	23
	34	K4A: Boom 1 down	34 / 22	22
BOSCHERT 0 - 1,4A 12VDC	35	K5B: Boom 2 down	35 / 24	24
	36	K5A: Boom 2 up	36 / 25	25
	37	K6B: ---	37 / ---	---
	38	K6A: ---	38 / ---	---
BOSCHERT 200mA 12VDC	39	K7B: ---	39 / ---	---
	40	K7A: ---	40 / ---	---
	41	K8B: Pump speed	41 / 28	28
	42	K8A: ---	42 / ---	---
	9	GND	9 / 9	9