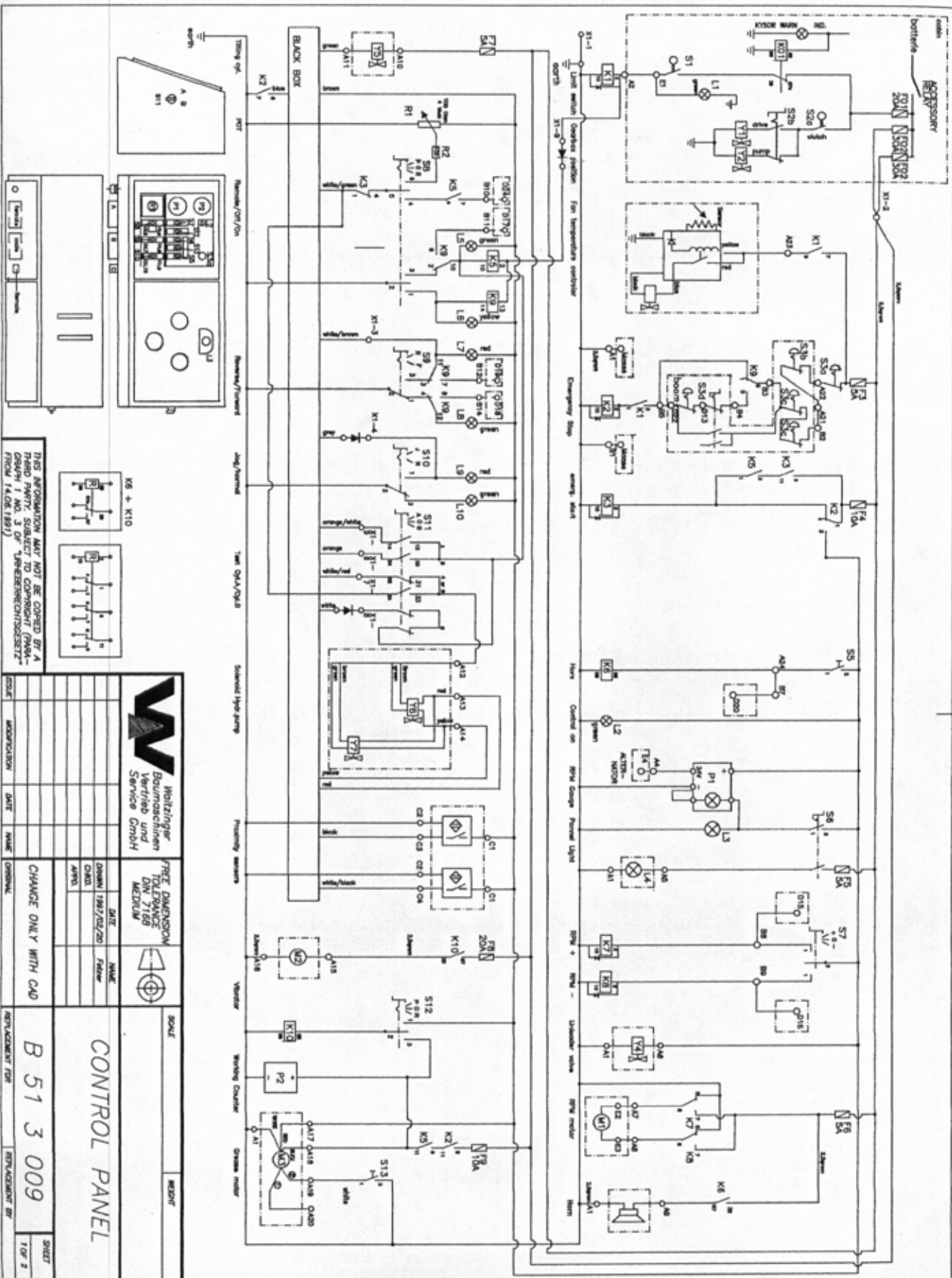


pos	description	ident-no	DIN	change-index	chg. dat	weight	quant
	stock	dimensions	material	valid from	val.unt.		unit


11	spr'ng washer A16	WA103489				0.008	16.00
							stk

description	drawing-no	ID	date	chg.-index	chg-date	val. from	val. unti
check valve drive cylinder, complete set	B414045	JR	29.04.98				

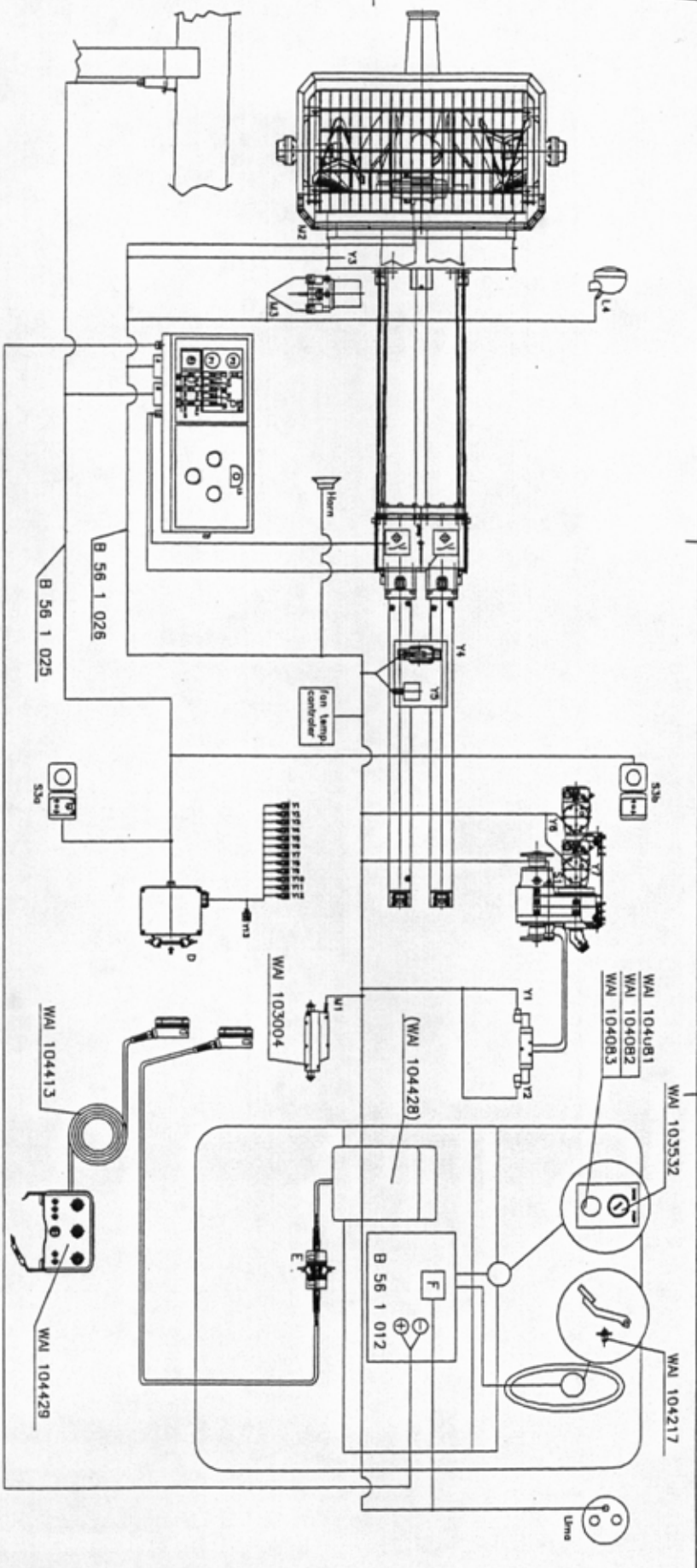
*** Liste beendet am 25/06/98/13.20 ***



THIS INFORMATION MAY NOT BE COPIED BY A
 PERSON WHO HAS BEEN GRANTED ACCESS TO
 THIS INFORMATION UNLESS HE IS AUTHORIZED BY
 THE OFFICE OF INFORMATION SECURITY

 Wolztlinger Baurausrich- Vertriebs- und Service GmbH		DATE: _____ NAME: _____ ORGAN: _____	
		DATE: _____ NAME: _____ ORGAN: _____	
THIS DIMENSION TOLERANCE DW 7166 MEDIUM		DATE: _____ NAME: _____ ORGAN: _____	
CHANGE ONLY WITH CAD		DATE: _____ NAME: _____ ORGAN: _____	
REPLACEMENT FOR		REPLACEMENT BY	
B 51 3 009		SHEET 1 OF 2	

CONTROL PANEL



pin No.	wire No.	function
1	1	ground
2	2	plus
3	3	emergency stop
4	4	emergency stop +
5	5	horn
6	6	pumping on
7	7	reverse
8	8	RPM +
9	9	RPM -
10	10	pot
11	11	free
12	12	engine start
13	13	free
14	14	free
15	15	free
16	16	free

pin No.	wire No.	function
1	8	RPM +
2	9	RPM -
3	7	pumping
4	7	reverse
5	5	horn
6	12	engine start
7	3	emergency stop
8	4	emergency stop +

pin No.	wire No.	wire No. extd.	function
1	23		boom 1 up
2	22		boom 1 down
3	25		boom 2 up
4	24		boom 2 down
5	19		boom 3 up
6	18		boom 3 down
7	17		boom 4 up
8	16		boom 4 down
9	-		engine stop
10	9		ground
11	20		turn clockwise
12	21		turn anticlockw.
13	1		plus
14	11		pot volvs
15	7		RPM +
16	4		RPM -
17	8		pumping on
18	-		reverse
19	10		horn
20	6		engine start
21	-		emergency stop
22	3		emergency stop +
23	3		pot
24	28		

pin No.	wire No.	function
1	1	power supply 2V
2	3	emergency stop
3	4	12 V
4	5	RPM -
5	6	horn
6	8	horn
7	11	RPM +
8	13	pump on
9	9	GND
10	14	reverse
11	25	pot volvs
12	-	free
13	29	free
14	14	free
15	30	free
16	31	free
17	32	boom 4 down

pin No.	wire No.	function
1	1	ST
2	2	RPM motor
3	3	RPM motor
4	4	flameout B
5	5	engine start
6	6	engine stop
7	7	1st/2nd
8	8	engine stop

THIS WIRING DIAGRAM IS FOR THE CONTROL UNIT ONLY. IT IS NOT TO BE USED FOR THE ENGINE OR OTHER EQUIPMENT. REFER TO THE SERVICE MANUAL FOR THE ENGINE AND OTHER EQUIPMENT.

W WIRING DIAGRAM
 Includes and
 Service Only

WAI 104217
 WAI 103532
 WAI 104429
 WAI 104413
 WAI 103004
 WAI 104428
 WAI 104083
 WAI 104082
 WAI 104081

B 56 1 012
 B 56 1 025
 B 56 1 026
 B 56 1 028

without parts list
 without parts list

Cable harness /
 accessories REED

B 56 1 031

STOCKLISTEN-DRUCK

posl	description	ident-no	DIN	change-index	chg. dat	weight	quant
stock		dimensions	material	valid from	val.unt.		unit
1	cable harness boom REED	B561025				0.000	1.00 stk
2	cable harness pump REED	B561026				0.000	1.00 stk
	own parts list						
3	R.P.M motor 12 V (linear actuator) LA12	MA1103004				0.762	1.00 stk
4	key switch	MA1103532				0.000	1.00 stk
5	Lamp RLF-GN	MA1104081				0.000	1.00 stk
6	Lamp socket BF	MA1104082				0.000	1.00 stk
7	Lamp 12V	MA1104083				0.000	1.00 stk
8	light switch	MA1104217				0.000	1.00 stk
9	cable drum + 35m cable	MA1104413				0.000	1.00 stk

description	drawing-no	ID	date	chg.-index	chg-date	val.from	val.unti
wiring harness/accessories REED 32m	9561031	Mt	17.02.98				

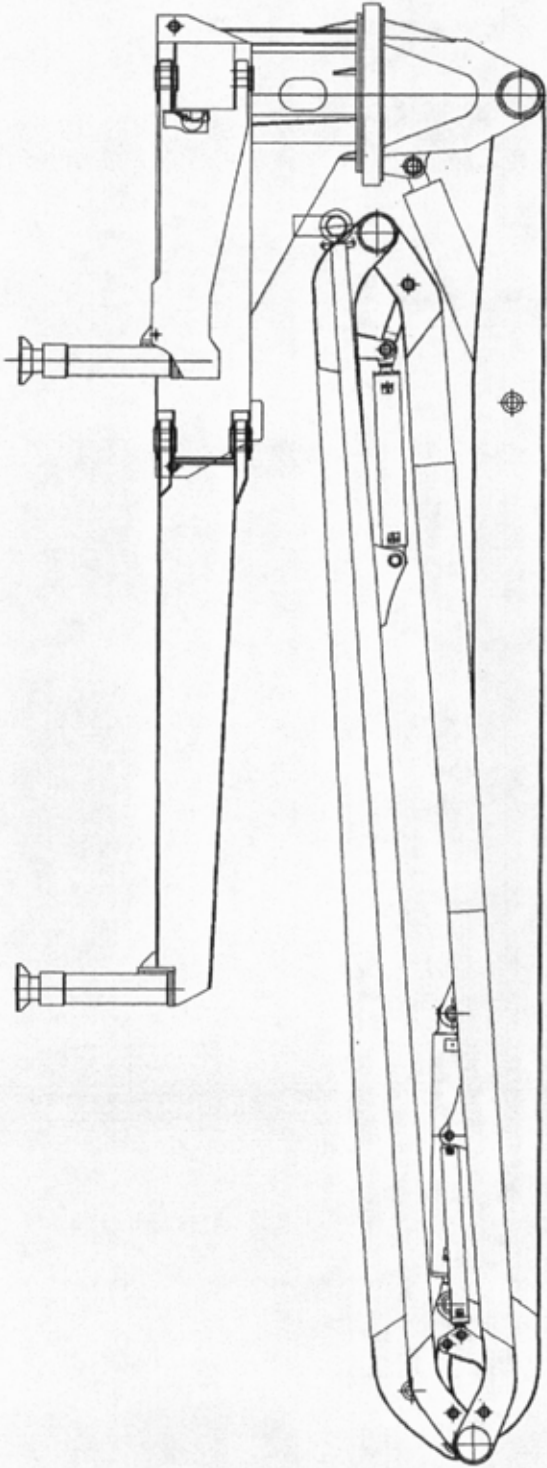
STÜCKLISTEN-DRUCK

pos	description	ident-no	DIN	change-index	chg. dat	weight	quant
	stock	dimensions	material	valid from	val.unt.		unit



10	cable remote control Nano M prop.	NA1104429				0.000	1.00
							Stk

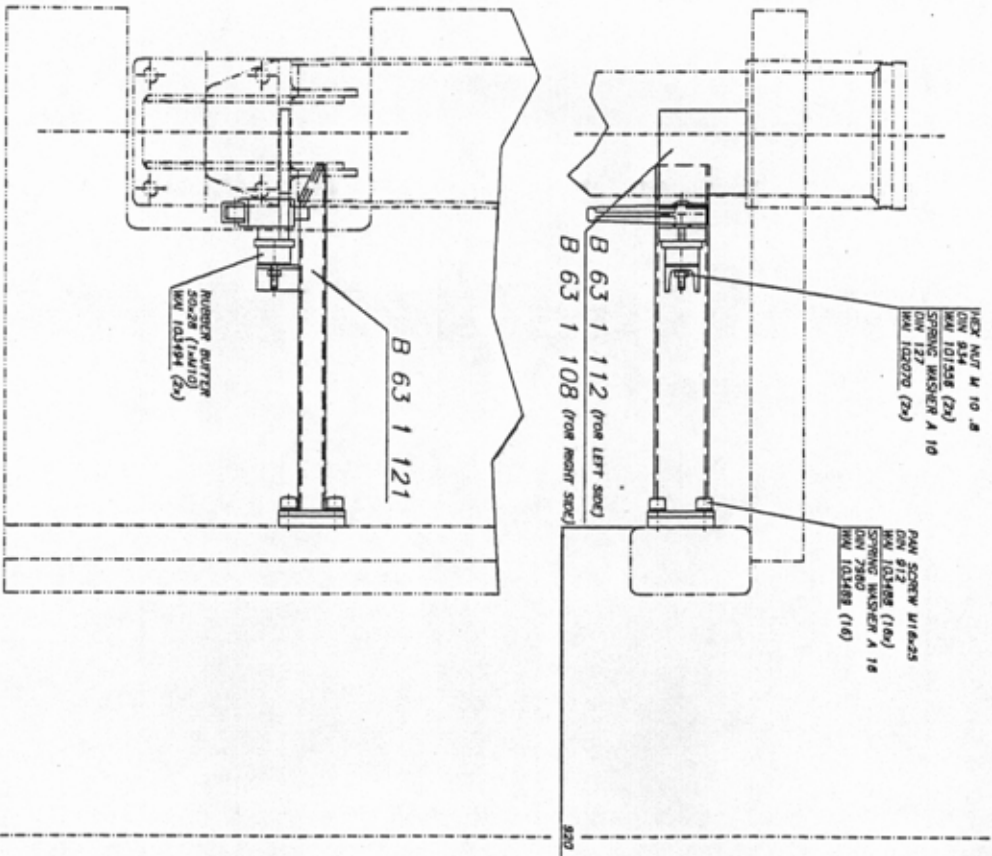
description	drawing-no	ID	date	chg.-index	chg-date	val.from	val.untl
wiring harness/accessories REED 32m	B561031	M1	17.02.98				

*** Liste beendet am 09/05/98/09.57 ***

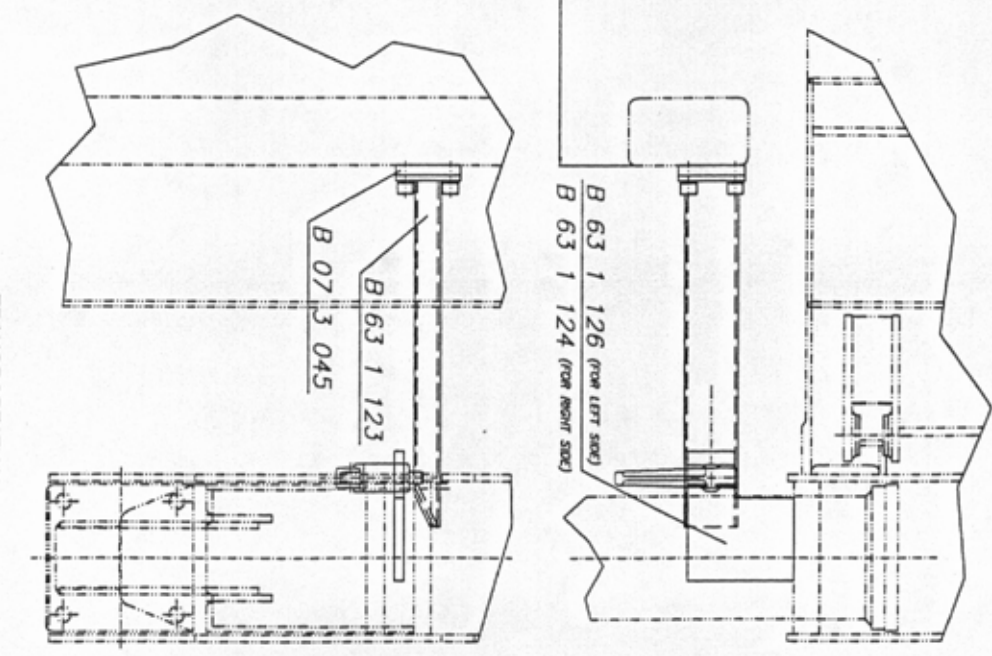


THIS INFORMATION MAY NOT BE COPIED BY A
THIRD PARTY SUBJECT TO COPYRIGHT (PMA-
GEM) BY THE STATE OF WISCONSIN CHS/SCHLITZ
FROM 14.06.1993

 Walteringer Baumaschinen Vertrieb und Service GmbH	FREE DIMENSION TOLERANCE DIN 7169 MEDIUM		SCALE 1:30 WEIGHT 118000N
	DATE DRAWN 1998/05/00 CHG APPR	NAME FRIEDR	CHANGE ONLY WITH CAD
SERIAL MODIFICATION DATE NAME ORIGINAL	ORIGINAL DATE NAME FRIEDR	CHANGE ONLY WITH CAD	SHEET OF
DISTRIBUTOR BOOM CBR-36.4/125		B 60 1 010	SHEET OF
REVISION FOR		REVISION BY	SHEET OF



TRANSPORTATION
SAFETY DEVICE REAR



TRANSPORTATION
SAFETY DEVICE FRONT

THIS INFORMATION MAY NOT BE COPIED OR
REPRODUCED IN ANY MANNER WITHOUT
THE WRITTEN PERMISSION OF THE
TRANSPORTATION DIVISION

		TRANSPORTATION SAFETY DEVICE CPL.	
		B 63 1 120	
DRAWN: [] CHECKED: [] DATE: []	DATE: [] TIME: [] BY: []	SCALE: 1:5	SHEET: [] OF []

STÜCKLISTEN-DRUCK

Seite: 1

pos	description	ident-no	DIN	change-index	chng. dat	weight	quant
	stock	dimensions	material	valid from	val.unt.		unit
1	support	B631121				4.500	2.00
	own parts list						stk
2	mounting left	B631108				0.000	1.00
	own parts list						stk
3	mounting right	B631112				3.800	1.00
	own parts list						stk
4	plate	B073045	1543/EN10029			0.550	4.00
		B1 15x100x100	SK37-2				stk
5	support	B631123				4.100	2.00
	own parts list						stk
6	mounting left	B631126				3.800	1.00
	own parts list						stk
7	mounting right	B631124				3.800	1.00
	own parts list						stk
8	rubber cushion	WA1103494				0.000	2.00
							stk
9	cheese head screw M 16 x 25	WA1103488				0.000	16.00
							stk

description	drawing-no	ID	date	chng.-index	chng-date	val. from	val. uncl
transportation safety device	B631120	MI	23.09.97				

pos	description	ident-no	DIN	change-index	chg. dat	weight	quant
	stock	dimensions	material	valid from	val.unt.		unit

10	sprung washer A16	WA1103489				0.008	16.00
							Stk
11	sprung washer A10	WA1102070				0.002	2.00
							Stk
12	nut M10 DIN 934	WA1101556				0.010	2.00
							Stk

description	drawing-no	ID	date	chg.-index	chg-date	val.from	val.untl
transportation safety device	B631120	M1	23.09.97				

*** Liste beendet am 09/05/98/09.58 ***

STÜCKLISTEN-DRUCK

Seite: 1

pos	description	ident-no	DIN	change-index	chg. dat	weight	quant
	stock	dimensions	material	valid from	val.unt.		unit
5	PTO gearbox 4400.03	WAI103595		15.07.97	0.000	1.00	stk
6	buffer	WAI103414			0.000	4.00	stk
7	hexagon bolt M 20 x 50	WAI102860			0.000	10.00	stk
8	pump AZFO23/61 R-PAB 05	WAI103623		15.07.97	10.200	1.00	stk
9	O-ring	WAI101806		15.07.97	0.000	1.00	stk
10	O-ring	WAI102818			0.000	1.00	stk
11	O-ring 126 x 4	WAI102078			0.000	1.00	stk
12	hexagon bolt M14x40	WAI102326			0.000	4.00	stk
13	hexagon bolt M 10 x 30	WAI101553		15.07.97	0.026	4.00	stk

description	drawing-no	ID	date	chg.-index	chg-date	val. from	val. until
distribution gear 4400cpl.36m w/o brack.	WAI103712	HP	15.07.97				

pos	description	ident-no	DIN	change-index	chg. dat	weight	quant
	stock	dimensions	material	valid from	val.unt.		untl
14	hexagon bolt M 10 x 35	MA1101705		15.07.97	0.030	4.00	Stk
16	spring washer A10	MA1102070		15.07.97	0.002	8.00	Stk
17	conical spring washer	MA1102110			0.045	10.00	Stk
18	washer 15, DIN 125	MA1103730		28.07.97	0.000	4.00	Stk
20	hexagon bolt M8 x 25 DIN 933 8.8	MA1101621			0.000	16.00	Stk
21	stop nut	MA1102111			5.000	16.00	Stk
22	washer 8.4	MA1101625			0.000	16.00	Stk
23	cheese head screw M 16 x 40	MA1102859			0.000	4.00	Stk
24	nut M16 DIN 985	MA1102330			0.000	4.00	Stk

description	drawing-no	ID	date	chg.-index	chg-date	val.from	val.untl
distribution gear 4400cpl.36m w/o brack.	MA1103712	HF	15.07.97				

WALTZINGER BAUMSCHNITZEN 89278 NIRSINGEN

09/05/98-09.58 JR

STÜCKLISTEN-DRUCK

Seite: 1

pos	description	ident-no	DIN	change-index	chg. dat	weight	quant
stock	dimensions	material	valid from	val.unt.	unit		
1	socket wrench 13 x 17 mm	WA1104663				0.000	1.00
							Stk
2	open-end wrench set, 6-30 mm	WA1104664				0.000	1.00
							Stk
3	open-end wrench 32/36 mm	WA1104665				0.000	1.00
							Stk
4	allenwrench - set 2 - 14 mm	WA1104666				0.000	1.00
							Stk
5	allenwrench 17 mm	WA1104667				0.000	1.00
							Stk
6	hexagon bolt M24 x 120	WA1104659				0.000	2.00
							Stk
7	hexagon bolt M20 x 150	WA1104660				0.000	2.00
							Stk
8	nut M20 DIN 934	WA1102891				0.000	2.00
							Stk
9	washer 21, DIN 125	WA1102941				0.000	2.00
							Stk

description	drawing-no	ID	date	chg.-index	chg-date	val. from	val. untl
ship away kit, boom pump	WA1104670	HG	04.05.98				

STÜCKLISTEN-DRUCK

pos	description	Ident-no	DIN	change-index	chg. dat	weight	quant
	stock	dimensions	material	valid from	val.unt.		unit

10	hexagon bolt H 14x90	WAI102533				0.000	2.00
							stk
11	hexagon bolt M10x140	WAI104661				0.000	2.00
							stk
12	nut M10 DIN 934	WAI101556		08.05.98		0.010	2.00
							stk
13	washer 10.5	WAI101559				0.003	2.00
							stk
14	hexagon bolt M10x100	WAI104662				0.000	2.00
							stk
15	cool box	WAI104668				0.000	1.00
							stk
16	piston ram DN 230	WAI100175				19.900	2.00
							stk
17	sponge ball (soft) DN125	WAI100266				0.500	1.00
							stk
18	sponge ball (hard) DN125	WAI100267				0.500	1.00
							stk

description	drawing-no	ID	date	chg.-index	chg-date	val.from	val.until
ship away kit, boom pump	WAI104670	MG	04.05.98				

STÜCKLISTEN-DRUCK

Seite: 1

pos	description	ident-no	DTN	change-index	chg. dat	weight	quant
stock	dimensions	material	valid from	val.unt.	unit		

1	strip back side	B224014	1017			1.500	1.00
		Fl 30x5x1355	St37-2				Stk
2	strip side	B224015	1017			0.850	2.00
		Fl 30x5x755	St37-2				Stk
3	cap screw	WA1103579			06.04.98	0.000	22.00
							Stk
4	cap nut M6	WA1101848			06.04.98	0.000	22.00
							Stk
5	washer 6.4	WA1101627			06.04.98	0.000	22.00
							Stk

description	drawing-no	ID	date	chg.-index	chg-date	val. from	val.unt.
clamping strip for rubber strip, compl.	WA1104555	jc	04.03.98				

*** Liste beendet am 09/05/98/10.11 ***