

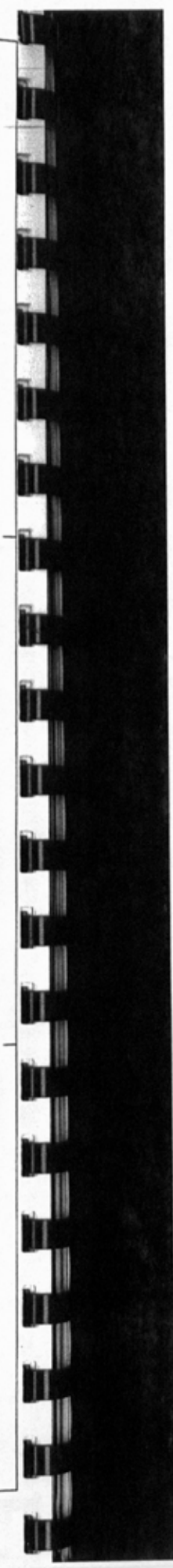
STU CKLI STEN - DRU CK

posl	description	ident-no	DIN	change-index	chg. dat	weight	quant
	stock	dimensions	material	valid from	val.unt.		unit

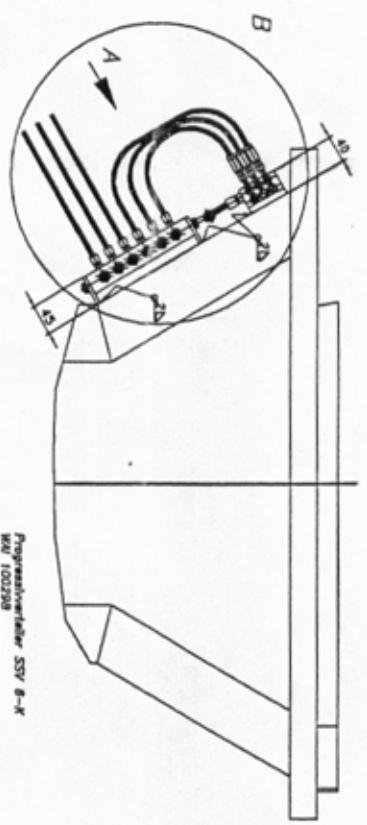
10	washer HV25	WAI102331				0.000	4.00
							stk
11	conical spring washer	WAI100506				0.000	9.00
							stk

description	drawing-no	ID	date	chg.-index	chg-date	val.from	val.until
s-valve system complete	B174003	RH	17.12.97				

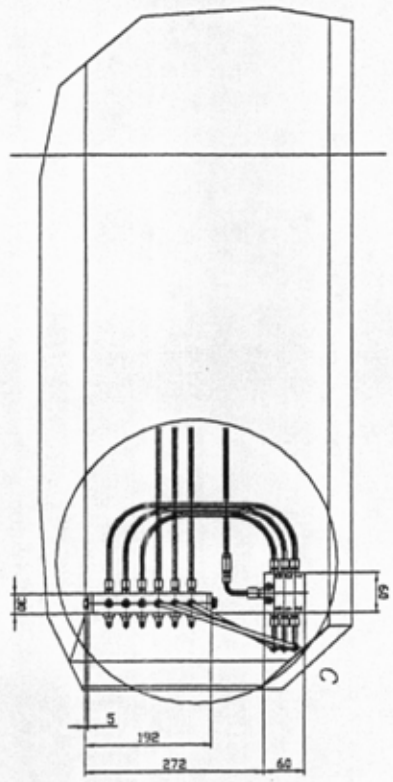
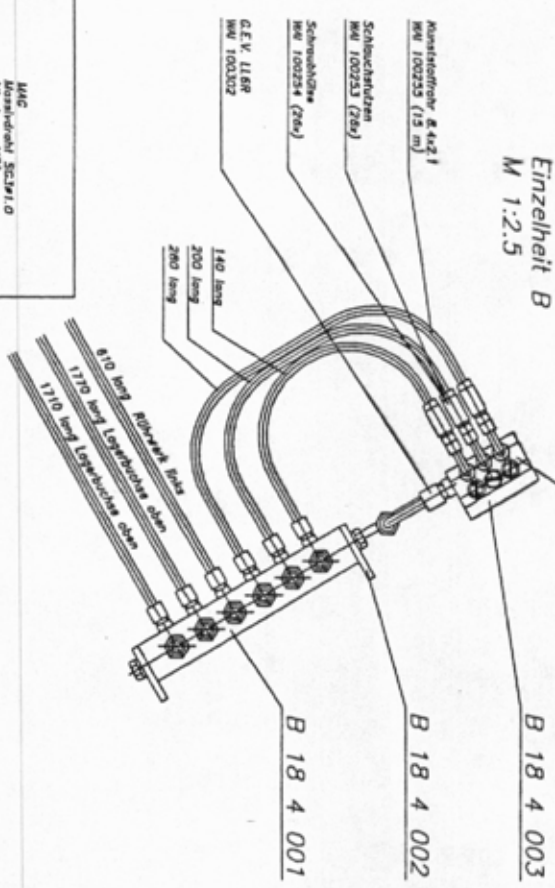
*** Liste beendet am 09/05/98/09.55 ***



Fahrtrichtung
→

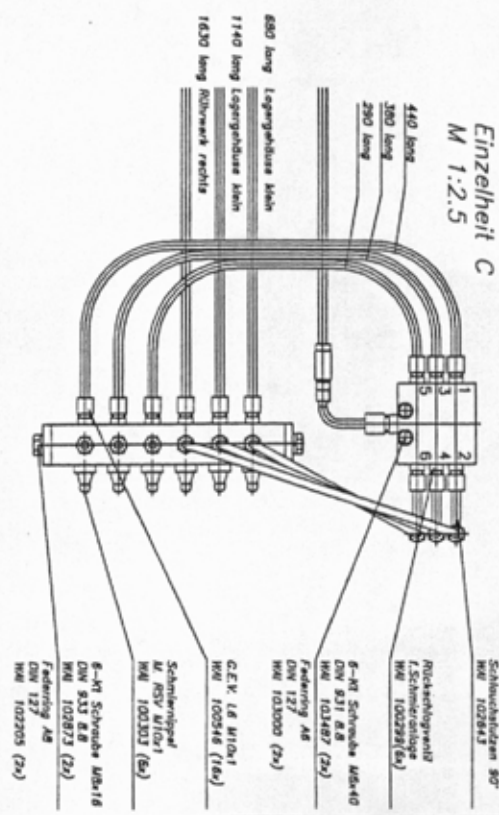


Einzelheit B
M 1:2.5



Ansicht A

Einzelheit C
M 1:2.5

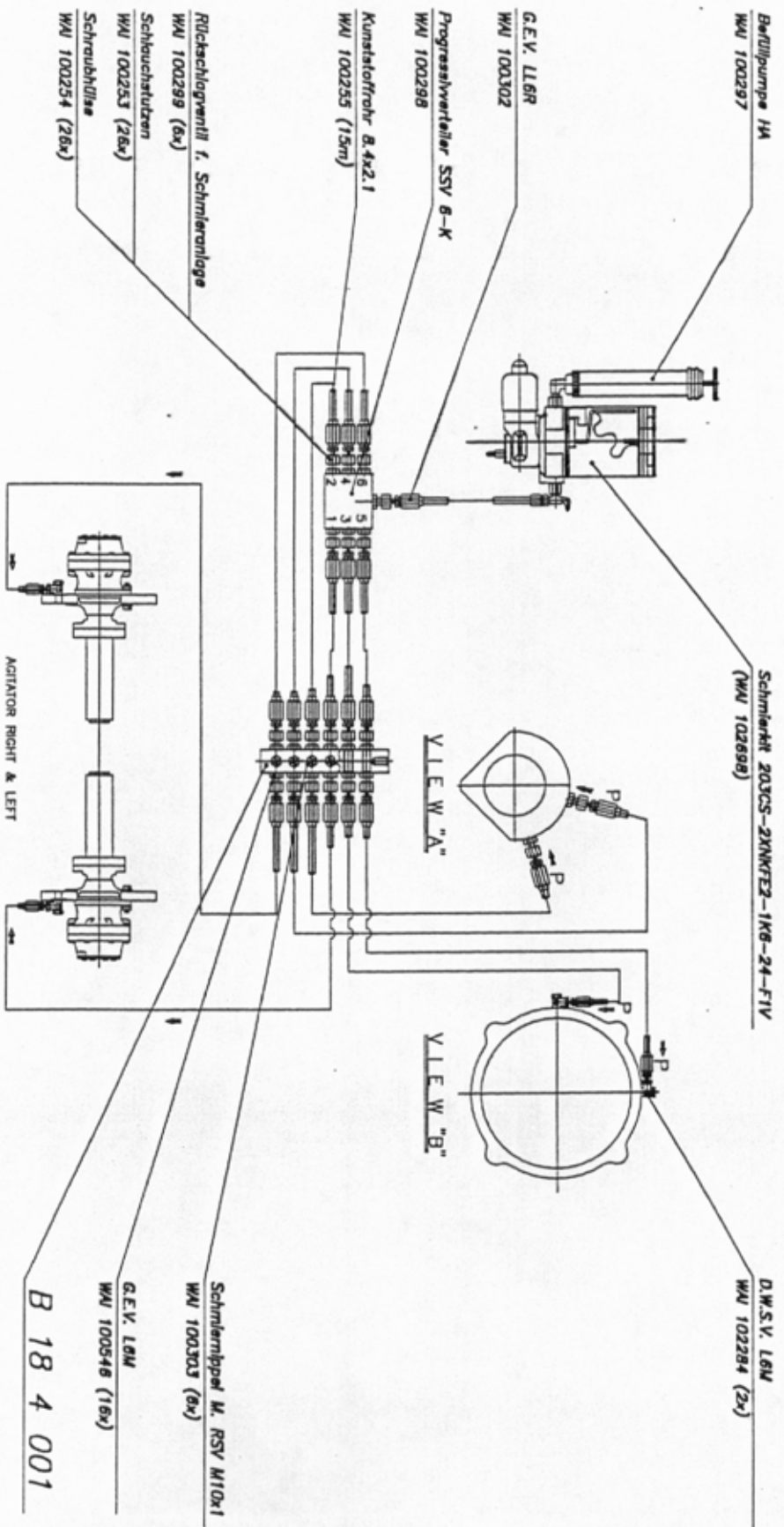


Schweißarbeiten:
Schweißverfahren
Zustandsetzort
Gussort
www.wilzinger.de
Zustandsetzort
Zustandsetzort
Anlage
DNV 15016, DNV RSK1 B.3 RS
Schweißprüfung
Fertigungsprüfung
Ultraschallprüfung

MAG
Mischdruck SCSW1.0
Mischgas M21

Schweißverfahren
p-100
nach DNV 15016

<p>Bitte unsere Zeichnung und alle Zeichnungen immer vollständig mit allen Änderungen anfertigen lassen. (1:20, 1:50)</p>	
	<p>Wilzinger Maschinenbau Vertrieb und Service GmbH</p>
<p>Produktions- Nr. 214 rev. 01</p>	<p>Zeichnung Nr. 1333 (6x)</p>
<p>Adressierung auf auf CAD</p>	<p>Blatt 2 von 2</p>
<p>Skizze 1:5 (1:2.5)</p>	<p>Skizze 00 N</p>
<p>eigene Stückliste</p>	<p>Schmieranlage B 18 4 000</p>



Berllipumpe 1/A
 WU 100297
 Schmiertrichter 203CS-2XNKFZ-1KG-24-FIV
 (WU 102699)
 D.W.S.V. L6M
 WU 102284 (2x)
 G.E.V. LL6R
 WU 100302
 Progressivverteiler SSV 8-K
 WU 100298
 Kunststoffrohr 8.4x2.1
 WU 100255 (15m)
 Rückschlagventil f. Schmieranlage
 WU 100299 (6x)
 Schlauchstutzen
 WU 100253 (26x)
 Schraubhülse
 WU 100254 (26x)
 Schmierlippelet M. RSV M10x1
 WU 100303 (6x)
 G.E.V. L6M
 WU 100546 (16x)
 AGITATOR RIGHT & LEFT
 VLEW "A"
 VLEW "B"
 B 18 4 001
 B 18 4 000

Ohne unsere Genehmigung darf diese Zeichnung
 weder vervielfältigt noch Dritten in Form oder
 Inhalt offenbart werden. (Stand: 14.05.1991)
 Nr. 3 des Urheberrechtsgesetzes vom 14.05.1991

		Holzinger Baumaschinen Vertrieb und Service GmbH		Freimühlstr. 2 81674 München Tel: 089 30901-1	
		Datum: 11.01.1997 Zeichner:		Name:	
Änderung nur auf CAD		Datum:		Name:	
B 18 4 000		Zeichnung:		Blatt 1 von 2	

Schmieranlage kpl.
 eigene Stückliste

STÜCKLISTEN-DRUCK

pos	description	Ident-no	DIN	change-index	chg. dat	weight	quant
	stock	dimensions	material	valid from	val.unt.		unit

3	distributor BSV-K	MA1100298				0.782	1.00
							Stk
4	stroke valve St for pipe DN6	MA1100299				0.009	6.00
							Stk
5	straight male stud coupling GE6-LR1/8K1	MA1100302				0.008	1.00
							Stk
6	plastic pipe 8.4 x 2.1	MA1100255				0.050	15.00
							Mtr
7	hose connecting piece, DN6, short	MA1100253				0.005	22.00
							Stk
8	threaded sleeve	MA1100254				0.013	26.00
							Stk
9	grease nipple	MA1100303				0.190	6.00
							Stk
10	throttlerace banjo elbows L6M	MA1102284				0.000	4.00
							Stk
11	straight male stud couplings L6M	MA1100546				0.026	14.00
							Stk

description	drawing-no	ID	date	chg.-index	chg-date	val. from	val. untl
lubrication system w/o pump unit	B184010	HP	22.09.97				

STÜCKLISTEN - DRUCK

pos	description	ident-no	DIN	change-index	chg. dat	weight	quant
	stock	dimensions	material	valid from	val.unt.		unit

12	cable tie 200x3.6, black	MA1103137				0.000	30.000
							stk
13	threaded sleeve, 90 degrees	MA1102643				0.023	4.001
							stk
14	hexagon screw M 6 x 40	MA1103487				0.008	2.001
							stk
15	hexagon bolt M 8 x 16	MA1102873				0.000	2.001
							stk
16	spring washer A6	MA1103000				0.000	2.001
							stk
17	spring washer	MA1102205				0.001	2.001
							stk
18	lubrication glb	B184001	1014			1.000	1.001
		4-Kt.stahl 30x30x175	St37				stk
19	holder for lubrication glb	B184002	1017			0.060	2.001
		P1 30x6x45	St37				stk
20	tap plate for lubrication distributor	B184003	1017			0.270	1.001
		P1 60x10x60	St37				stk

description	drawing-no	ID	date	chg.-index	chg-date	val.from	val.until
lubrication system w/o pump unit	B184010	HF	22.09.97				

STÜCKLISTEN - DRUCK

pos	description	ident-no	DIN	change-index	chg. dat	weight	quant
	stock	dimensions	material	valid from	val.unt.		unit

1	reducer DN 200-180 own parts list	B191010		a	06.03.97	0.000	1.00
2	reducer elbow DN 180-150 own parts list	B191015				0.000	1.00
10	locking wedge complete own parts list	B194046				1.850	1.00
13	locking bolt	B194045	1013			1.050	1.00
14	hinge	B194049	1013			1.700	2.00
15	bolt	B194050	671	a	12.02.98	0.000	1.00
16	snap coupling 5 1/2" own parts list	B194053	St52-3			0.000	1.00
26	O-ring	WA1104025				0.000	1.00
27	clamp coupling 6"	WA1101779				0.000	3.00

description	drawing-no	ID	date	chg.-index	chg-date	val. from	val.unt
conveying pipeline for pump unit	B194065	HF	22.09.97	a	13.05.98		

STÜCKLISTEN - DRUCK

pos	description	ident-no	DIN	change-index	chg. dat	weight	quant
	stock	dimensions	material	valid from	val.unt.		unit

28	bend DN 150	VA1100690				0.000	1.00 stk
29	O-ring	VA1101545				0.052	3.00 stk
30	spring pin 8 mm	VA1102622		22.09.97		0.000	4.00 stk
31	snap ring	VA1100694				0.004	2.00 stk
32	hexagon bolt H 24 x 65	VA1102848				0.000	3.00 stk
35	washer HV25	VA1102331				0.000	3.00 stk
39	chain 4mm	VA1103732				0.000	1.00 mtr
40	cotter pin	VA1101266				0.060	1.00 stk
41	key ring	VA1104636				0.000	2.00 stk

description	drawing-no	ID	date	chg.-index	chg-date	val. from	val.unt
conveying pipeline for pump unit	B194065	HF	22.09.97	a	13.05.98		

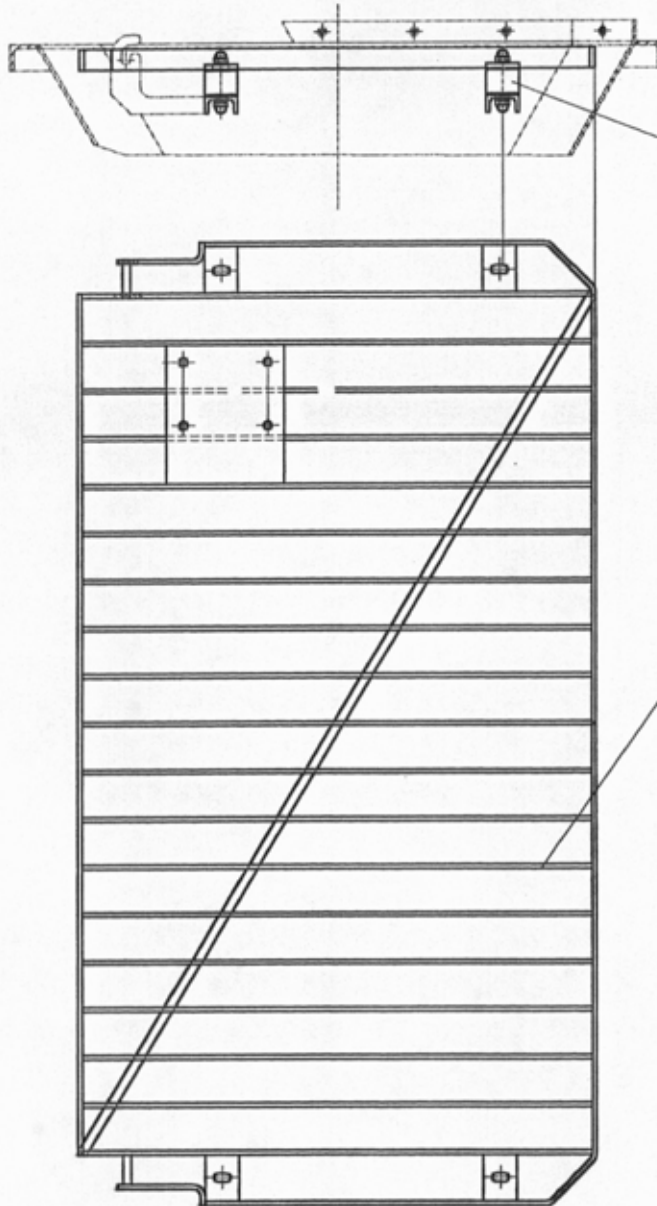
STÜCKLISTEN - DRUCK

pos	description	ident-no	DIN	change-index	chg. dat	weight	quant
	stock	dimensions	material	valid from	val.unt.		unit

42	cheese head screw	WA1101792				0.000	6.00 stk
43	spring washer A12	WA1103113				0.000	6.00 stk
44	grease nipple	WA1100805				0.005	1.00 stk

description	drawing-no	ID	date	chg.-index	chg-date	val. from	val.unt
conveying pipeline for pump unit	8194065	HF	22.09.97	a	13.05.98		

*** Liste beendet am 20/05/98/07.58 ***



- RUBBER WASHER
- 50x40 2 HOLES
- WAI 104067
- CAF NUT
- M10 DIN 1587
- WAI 101847
- WASHER
- 10,5 DIN 125
- WAI 101559

B 22 4 035

THIS INFORMATION MAY NOT BE REPRODUCED OR TRANSMITTED IN ANY FORM OR BY ANY MEANS, ELECTRONIC OR MECHANICAL, INCLUDING PHOTOCOPYING, RECORDING, OR BY ANY INFORMATION STORAGE AND RETRIEVAL SYSTEM.



Waitzinger
Baumaschinen
Vertrieb und
Service GmbH

TECHNICAL DIMENSION
TOLERANCE
DIN 7185
MEDIUM



SCALE 1:10

WEIGHT

own parts list

GRID CPL.

CHANGE ONLY WITH CND

B 22 4 046

SHEET

OF

REVISION NO. DATE MADE UNBEN.

REPLACEMENT FOR

REPLACEMENT BY

pos	description	ident-no	DIN	change-index	chg-dat	weight	quant
	stock	dimensions	material	valid from	val.unt.		unit

1	concrete grid light version	B224035				45.300	1.00
	own parts list						stk
2	rubber cushion	WA1104067				0.000	4.00
							stk
3	washer 10.5	WA1101559				0.003	8.00
							stk
4	cap nut M10	WA1101847				0.000	8.00
							stk

description	drawing-no	ID	date	chg.-index	chg-date	val.from	val.untl
concrete grid cpl. light version	B224046	HF	20.05.98				

*** Liste beendet am 25/06/98/13.18 ***

STÜCKLISTEN-DRUCK

Seite: 1

pos	description	ident-no	DIN	change-index	chg. dat	weight	quant
	stock	dimensions	material	valid from	val.unt.		unit

1	flange	B254101		a	23.01.97	0.0001	2.00
	own parts list						Stk
2	shaft	B254102	1013	a	23.04.97	0.0001	2.00
		Rd 100x199	St52				Stk
3	nut	B254103	1013			0.0001	2.00
		Rd 110x165	ST52				Stk
4	wear sleeve	B254104	2448	a	01.12.97	0.490	2.00
		Rohr 88.9x8.8x50	StE 690				Stk
5	agitator shaft, right for remove	B254121				0.0001	1.00
	own parts list						Stk
6	agitator shaft, left for remove	B254122				0.0001	1.00
	own parts list						Stk
7	hexagon bolt	WAI103062				0.0001	8.00
							Stk
8	set screw	WAI100499				0.0001	2.00
							Stk
9	clamping sleeve 6 x 18	WAI103106				0.0001	4.00
							Stk

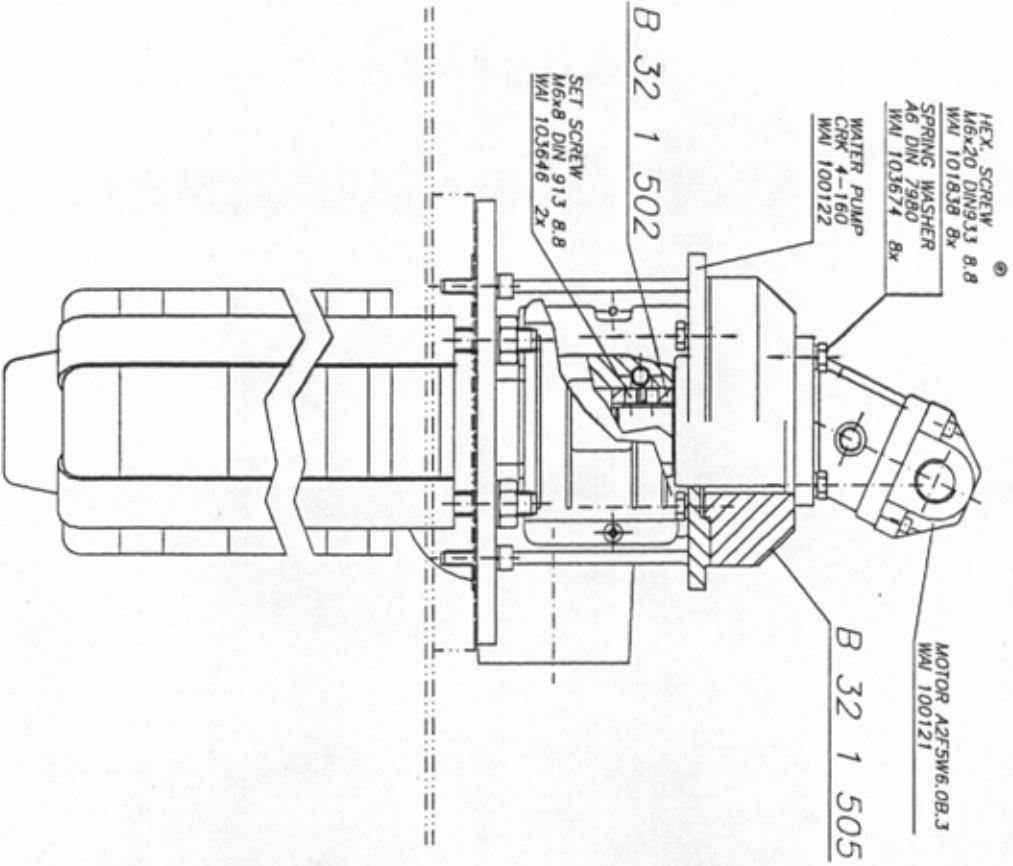
description	drawing-no	ID	date	chg.-index	chg-date	val. from	val. until
agitator w/ich drive	B254000	HG	30.06.97	b		24.04.98	

STÜCKLISTEN-DRUCK

pos	description	ident-no	DIN	change-index	chg. dat	weight	quant
	stock	dimensions	material	valid from	val.unt.		unt

10	straight pin 10 H 6 x 30	WA1103065				0.0001	12.00
							stk
11	washer	WA1102962				0.013	8.00
							stk
12	groove ring 85-100-11.5	WA1102544				0.024	4.00
							stk
13	O-ring 174 x 3	WA1103063				0.0001	2.00
							stk
14	O-ring 13 x 2	WA1103064				0.0001	2.00
							stk
15	O-ring 59 x 3	WA1103249				0.0001	2.00
							stk
16	hydraulic motor MCR 3D 280	WA1101240				0.0001	2.00
							stk

description	drawing-no	ID	date	chg.-index	chg-date	val. from	val.unt
agilator with drive	B254000	HG	30.06.97	b		24.04.98	



ATTENTION!
 YOU HAVE TO LIFT
 THE PUMP SHAFT
 AT HALF OF THE AXIAL
 GAP DURING ASSEMBLING

W Woltzinger
 Baumaschinen
 Vertrieb und
 Service GmbH

FREE DIMENSION
 TOLERANCE
 DIN 7168
 MEDIUM



ISSUE	NO.	MODIFICATION	DATE	BY	NAME	DATE	NAME	DATE	NAME
CHANGE ONLY WITH CAD								SCALE	1:2
WATER PUMP WITH DRIVE								WIGHT	175 N
WAI 104176								OWN PARTS LIST	
REPLACEMENT FOR								REPLACEMENT BY	SHEET
									OF

THIS INFORMATION MAY NOT BE COPIED BY A
 THIRD PARTY SUBJECT TO COPYRIGHT (PATA-
 GROUP I NO. 3 OF "LÄNDEBRECHTSVERLETT"
 FROM 14.06.1991)

STÜCKLISTEN - DRUCK

pos	description	ident-no	DIN	change-index	chg. dat	weight	quant
	stock	dimensions	material	valid from	val.unt.		unit

1	coupling for waterpump	B321502	1013			0.010	1.00
		Rundatahl 30x26	St52-3				Stk
2	flange for water pump	B321505	1013			2.950	1.00
		Rd 120x55	St37				Stk
4	waterpump hydromotor	MAI100121				2.300	1.00
	type: AZP 5 W 6.0 B.3						Stk
5	water pump CRK 4-160	MAI100122				12.700	1.00
							Stk
6	hex. bolt M6x20	MAI101838				0.000	8.00
							Stk
7	spring washer A6	MAI103674				0.000	8.00
							Stk
8	set screw H 6 x 8	MAI103646				0.000	2.00
							Stk

description	drawing-no	ID	date	chg.-index	chg-date	val.from	val.uncl
water pump with drive	MAI104176	JR	11.11.97				

pos	description	ident-no	DIN	change-index	chg. dat	weight	quant
	stock	dimensions	material	valid from	val.unt.		unit

1	check valve LT-35B23.0-K including valve and housing	WA1100938				0.834	4.00 stk
2	straight male stud couplings L15-G 1/2"	WA1101332		15.05.98		0.000	8.00 stk
3	throttlefree banjo elbows L15 R	WA1101950				0.000	4.00 stk
4	straight stud standpipe adaptor L15 G1/2	WA1101979				0.000	4.00 stk
6	hydraulic hose DN 12 x 700	WA1103207				0.000	4.00 stk
7	cover for drive cylinder	B491001				0.000	4.00 stk
8	SAE flange	WA1101216				0.000	8.00 stk
9	O-ring	WA1102014				0.000	4.00 stk
10	cheese head screw M 16 x 55	WA1103670				0.000	16.00 stk

description	drawing-no	ID	date	chg.-index	chg-date	val. from	val.unt
check valve drive cylinder, complete set	BA14045	JR	29.04.98				