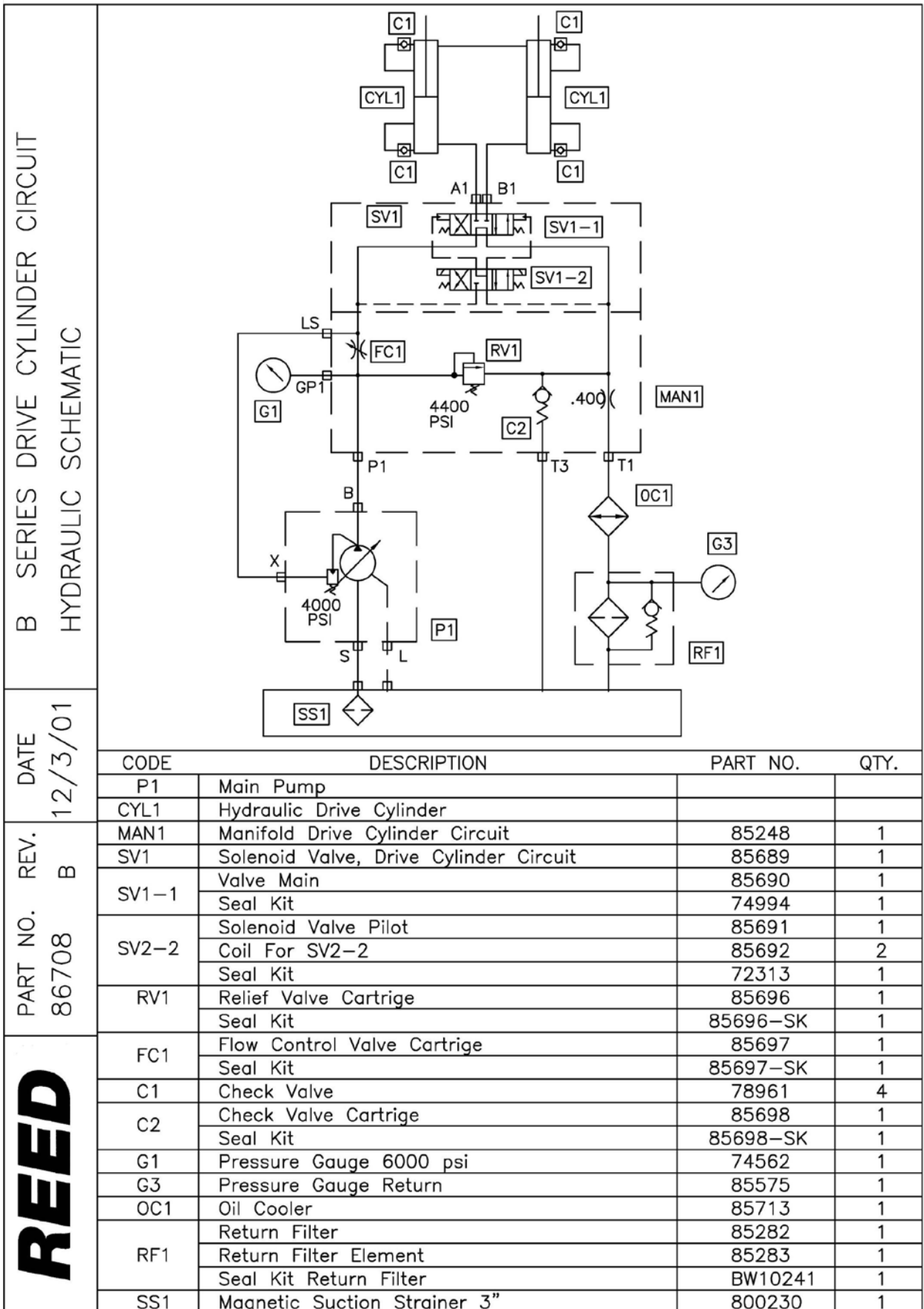
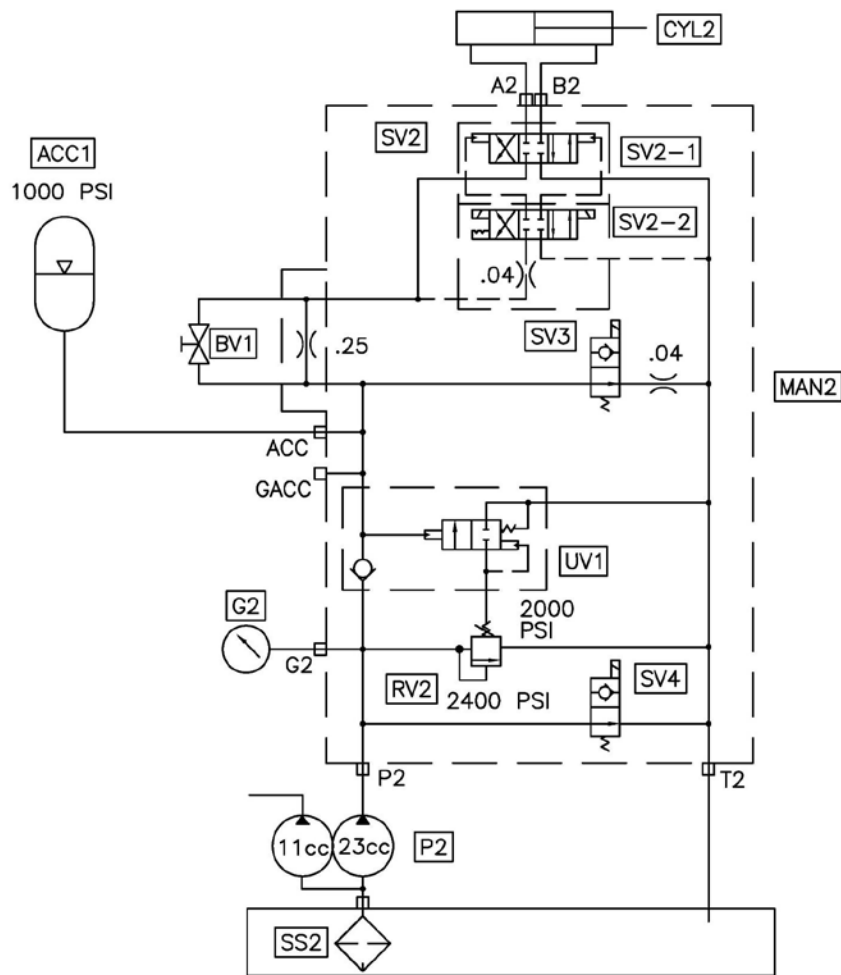


HYDRAULIC AND ELECTRICAL SCHEMATICS



REED

B50/60/70 SERIES SWING TUBE HYDRAULIC SCHEMATIC, SINGLE SHIFT CYLINDER



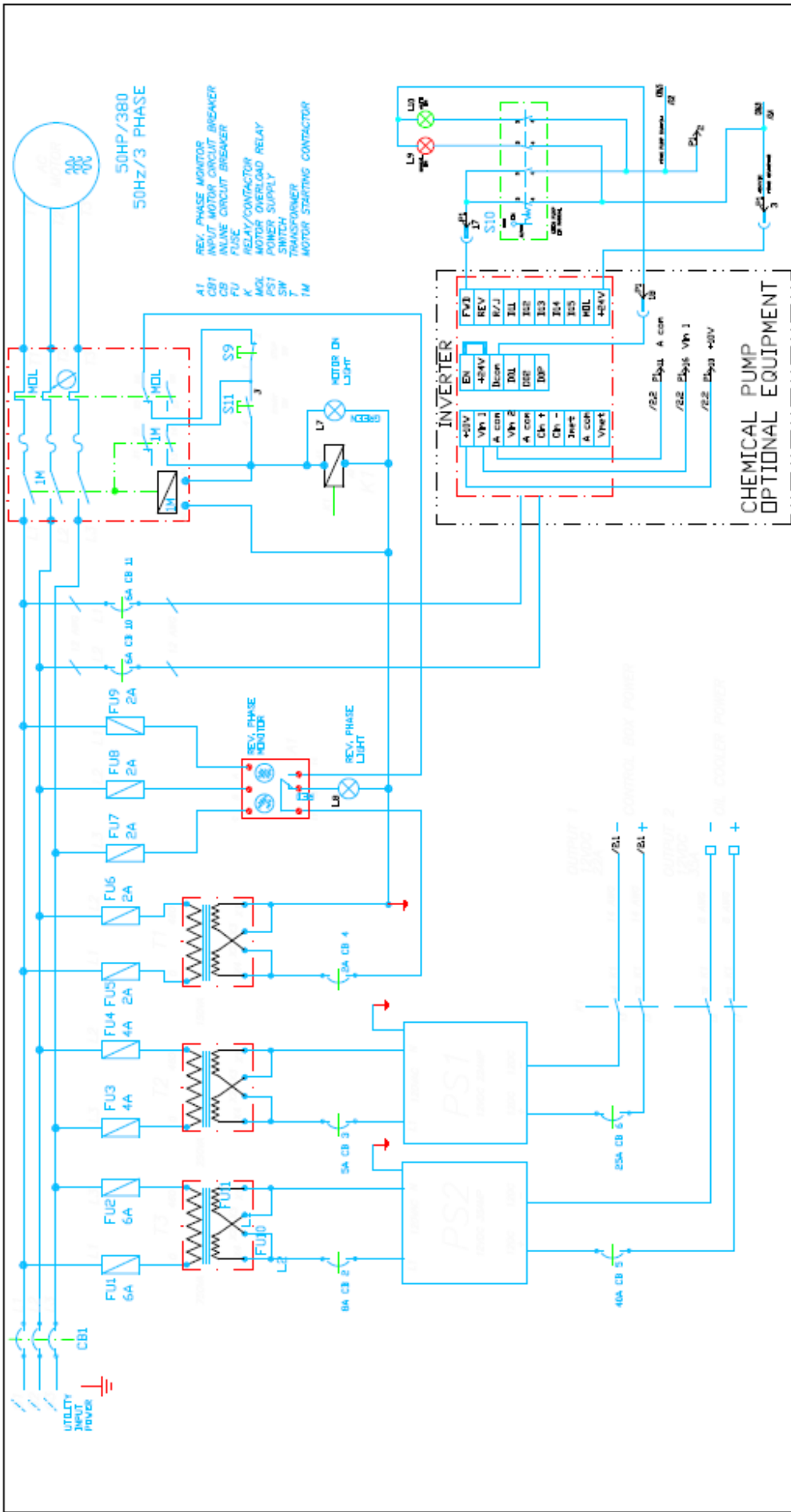
DATE
11/7/01

REV.
B

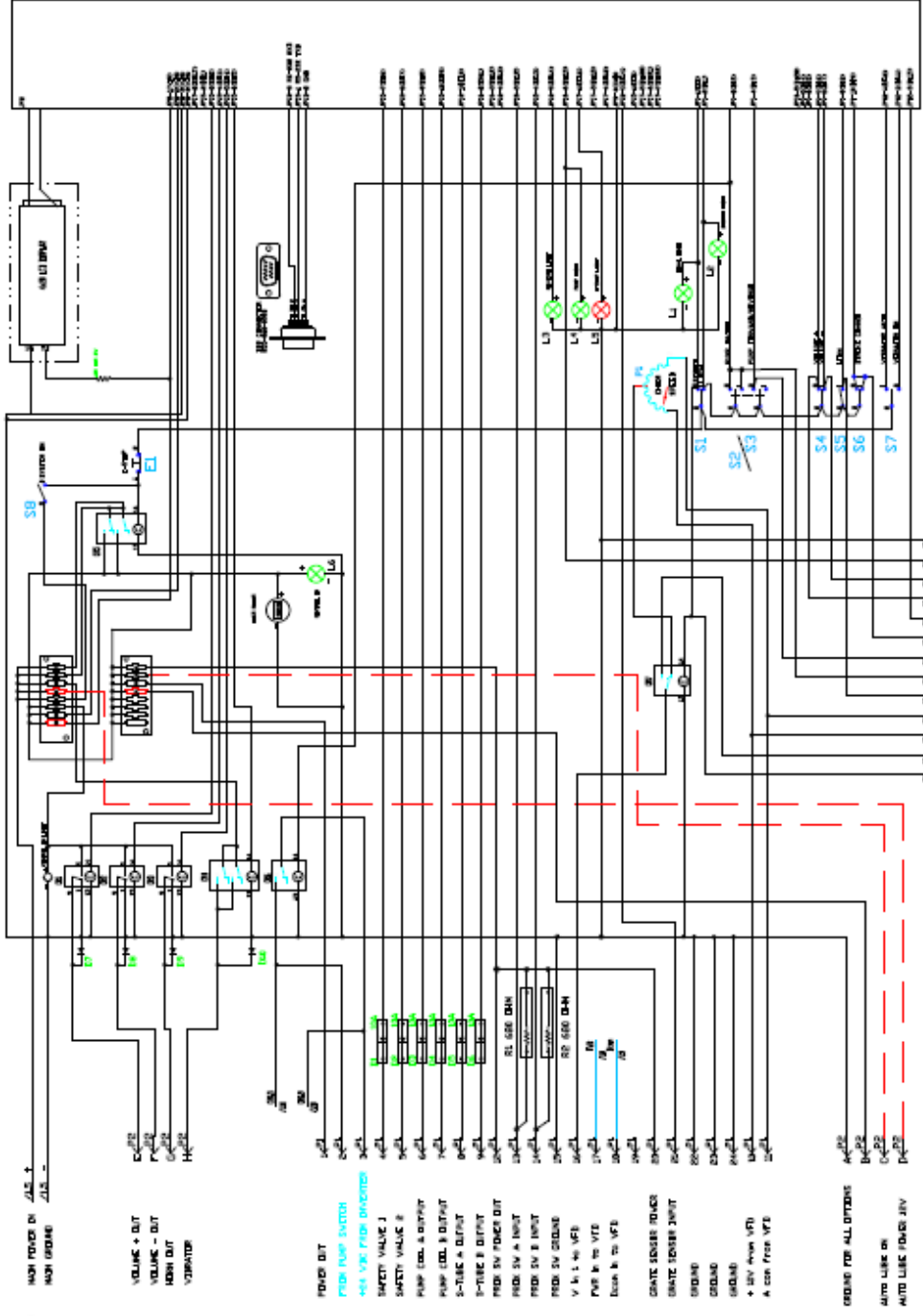
PART NO.
86705

REED

CODE	DESCRIPTION	PART NO.	QTY.
P2	Gear Pump	87571-1	1
CYL2	S Tube Single Shift Cylinder	86221	1
	Seal Kit, GRATE BEND or TEXAS	86221-SK??	1
MAN2	Manifold S Tube Circuit	85249	1
SV2	Solenoid Valve S Tube Circuit	85693	1
SV2-1	Valve Main	85694	1
	Seal Kit	74994	1
SV2-2	Solenoid Valve Pilot	85695	1
	Seal Kit	72313	1
	Coil For SV2-2	85692	2
SV3	Solenoid Valve Cartridge	87246	1
	Coil For SV3	87247	1
SV4	Solenoid Valve Cartridge	87248	1
	Coil For SV4	87249	1
RV2	Relife Valve Cartridge	85703	1
	Seal Kit For Relife Valve	85703SK	1
UN1	Unloder Valve Cartridge	85704	1
	Seal Kit For Unloder Valve	85704SK	1
BV1	Ball Valve	85705	1
AAC1	Accumulator	74515	1
	Accumulator, Bladder	74516	1
	Seal Kit Accumulator, Bladder	85812	1
G2	Pressure Gauge 3000 PSI	70366	1
SS2	Magnetic Suction Strainer 1 1/4"	79247	1

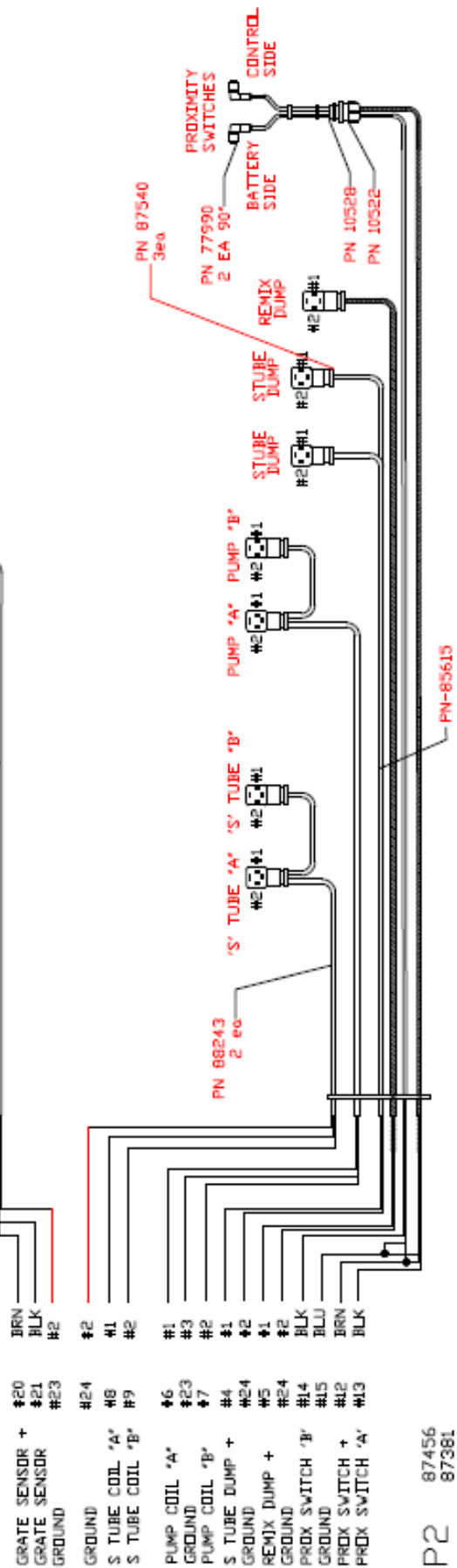


ID NOT SCALE DRAWING		CONCRETE PLACING EQUIPMENT	
UNLESS OTHERWISE SPECIFIED, INDICATING AND BY CHANGE		CHIND, CA 91710	
TITLE		ELECTRIC DIAGRAM M SERIES	
TOLERANCES		PART NUMBER	
XX .030	XXX .010	85997-17	
FRACTION 1/32	ANGLE 1/2°	REV	
DRAWN DR 3/27/23		SHEET 1 OF 2	
BY		MATERIAL	
APP'VD		THIS DRAWING IS THE PROPERTY OF REED MANUFACTURING AND IS LOANED WITHOUT CONSIDERATION OTHER THAN THE INDIVIDUAL'S AGREEMENT THAT IT SHALL NOT BE REPRODUCED, COPIED, LAMINATED, REPRODUCED IN ANY MANNER, OR USED IN ANY MANNER OTHER THAN THAT FOR WHICH IT IS SPECIFICALLY PURCHASED.	
REVISIONS			
REV	DATE	DESCRIPTION OF CHANGE	



<h1 style="text-align: center;">REED</h1> <p style="text-align: center;">CONCRETE PLACING EQUIPMENT CHIND, CA 91710</p>		DO NOT SCALE DRAWING <small>(UNLESS OTHERWISE SPECIFIED, DIMENSIONS ARE IN INCHES.)</small>	
		TOLERANCES: DIM. ±.030 HOLE ±.010 FINISH ±.010 ANGLE ±.5°	
TITLE ELECTRIC DIAGRAM M SERIES		PART NUMBER 85997-17	
MATERIAL		THIS DRAWING IS THE PROPERTY OF REED MANUFACTURING AND IS LOANED WITHOUT CONSIDERATION OTHER THAN THE BOROUGHS OR DISPOSED OF LOOSELY OR INCORRECTLY. NOT USED FOR ANY PURPOSE OTHER THAN THAT FOR WHICH IT IS SPECIFICALLY PROVIDED.	
REV	DATE	DESCRIPTION OF CHANGE	BY
		REVISIONS	
DRAWN DR		DATE 3/27/70	
APPROVED		APPROVED	

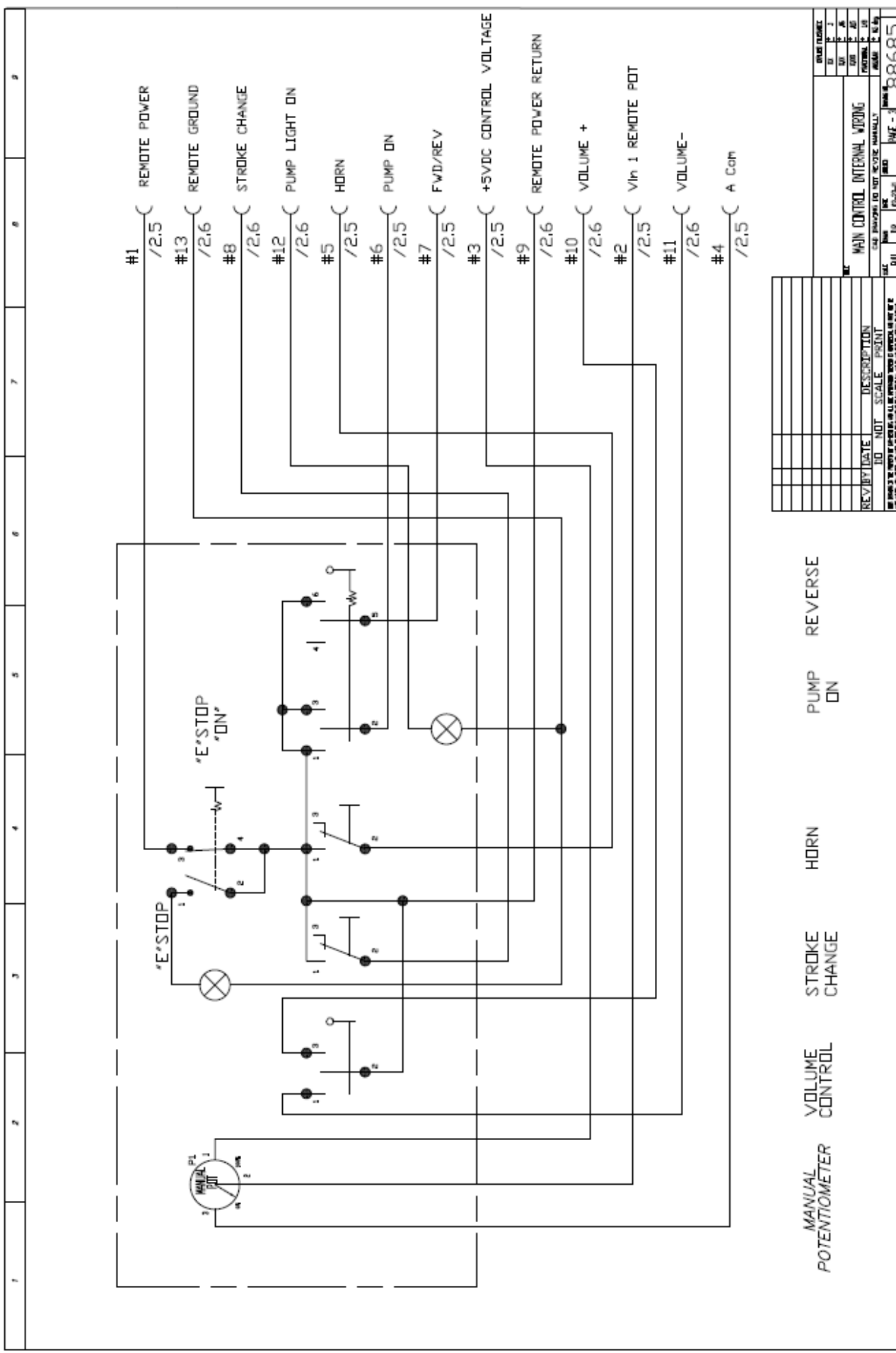
P1 87806-1
87808-1



P2 87456
87381



<p>REED</p> <p>CONCRETE PLACING EQUIPMENT CHIND, CA 91710</p>		<p>REV 1</p>	
<p>TITLE</p> <p>WIRING M SER SKID ELECTRIC</p>		<p>PART NUMBER</p> <p>88644</p>	
<p>MATERIAL</p>		<p>REV</p>	
<p>THIS DRAWING IS THE PROPERTY OF REED MANUFACTURING AND IS LOANED WITHOUT CONSIDERATION OTHER THAN THE BORROWER'S AGREEMENT THAT IT SHALL NOT BE REPRODUCED, COPIED, LOANED, OR DISPOSED OF, DIRECTLY OR INDIRECTLY, NOR USED FOR ANY PURPOSE OTHER THAN THAT FOR WHICH IT IS SPECIFICALLY FURNISHED.</p>			
<p>DO NOT SCALE DRAWING UNLESS OTHERWISE SPECIFIED, DIMENSIONS ARE IN INCHES.</p>		<p>3/25/13</p>	
<p>TOLEANCES: .XX .030 .XXX .010 FRACTION 1/32 ANGLE 1/2°</p>		<p>APPVD</p>	
<p>BREAK ALL SHARP EDGES .010 MAX. x 45</p>		<p>BY</p>	
<p>ALL MACHINED SURFACES 125/ UNLESS OTHERWISE SPECIFIED</p>		<p>REVISIONS</p>	
REV	DATE	DESCRIPTION OF CHANGE	BY



MANUAL POTENTIOMETER VOLUME CONTROL STROKE CHANGE HORN PUMP ON REVERSE

REV	DATE	DESCRIPTION	SCALE	POINT

DATE PLACED		DRAWN	CHECKED	APPROVED	PARTIAL	SCALE	SHEET NO.	TOTAL SHEETS
MAIN CONTROL INTERNAL WIRING								
DATE: 08-09-85								
SHEET: 1 OF 1								
DRAWING NO.: 88685								
REV: 0								
REV: 1								
REV: 2								
REV: 3								
REV: 4								
REV: 5								
REV: 6								
REV: 7								
REV: 8								
REV: 9								
REV: 10								
REV: 11								
REV: 12								
REV: 13								
REV: 14								
REV: 15								
REV: 16								
REV: 17								
REV: 18								
REV: 19								
REV: 20								

Controller Error Codes **Code & descriptions**

- EC01** – No radio link (no signal from either radio or cable)
- EC02** – J1939 CAN link error
- EC03** – RPM Plus
- EC04** – RPM Minus
- EC05** – Volume Plus
- EC06** – Volume Minus
- EC07** – Horn
- EC08** – Vibrator
- EC09** – Safety Valve 1
- EC10** – Safety Valve 2
- EC11** – Pump Coil A
- EC12** – Pump Coil B
- EC13** – S Tube A
- EC14** – S Tube B
- EC15** – Reverse Coil Output – enabled when calibration checkbox for Reverse Logic Change is unchecked.
- EC16** – Fast Change – enabled when the calibration checkbox for Fast Change is checked.
- EC17** – Reverse Light out Error
- EC18** – Pump Light Out Error
- EC19** – Check Engine Light
- EC20** – Stop Engine Light
- EC21** – Volume PWM Output Error
- EC22** – Prox A&B Error
- EC23** – Wrong ID
- EC24** – Engine RPM Overspeed
- EC25** – Oil Low Pressure
- EC26** – Coolant Over Temp.
- EC27** – Low Batt. Voltage
- EC28** – High Batt. Voltage
- EC29** – Denison Fast Change
- EC30** – Denison A (only on C series with Denison Hydraulic pumps)
- EC31** – Denison B (only on C series with Denison Hydraulic pumps)

LINCOLN 94012 AUTO LUBE PUMP WIRING DIAGRAM

ELECTRICAL CONNECTIONS

Connect black power cord as follows:

Red wire connects to 8 amp fuse then to Battery (+).

White wire connects to Battery (-).

Blue wire connects to ignition switch, then to 8 amp fuse, then to Battery (+).

