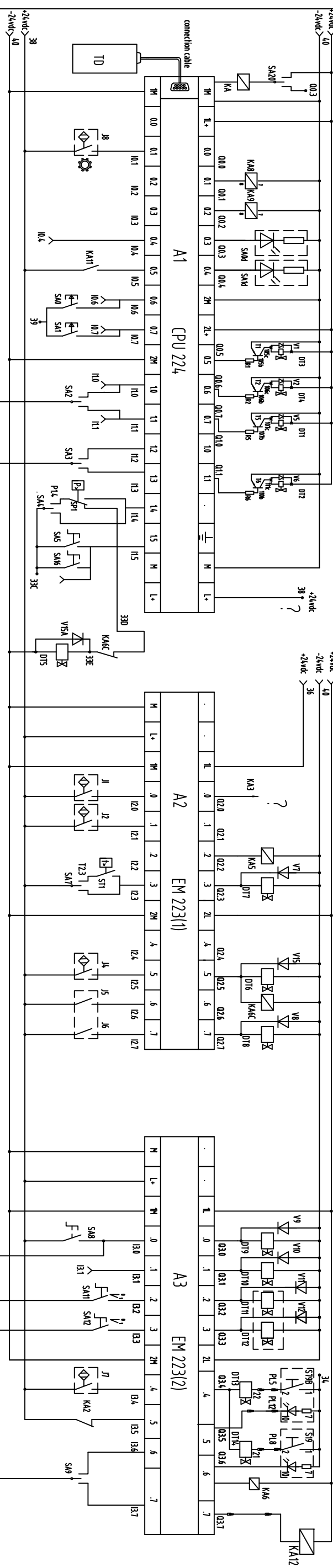


1.Movement status of each solenoid valve:

work status	solenoid	D11	D12	D13	D14	D15	D16	D17	D18	D16
positive pump		+/-	-/+	+/-	-/+					
reverse pump		+/-	-/+	-/+	-/+					
inching forward		+	+	+	+					
inching backward		-	-	-	-					
swing cylinder forward		+	+	+	+					
swing cylinder backward		-	-	-	-					
oil cooler						+				
positive adjusting rotation						+				
positive adjusting rotation						-				
moving boom & outrigger						+				

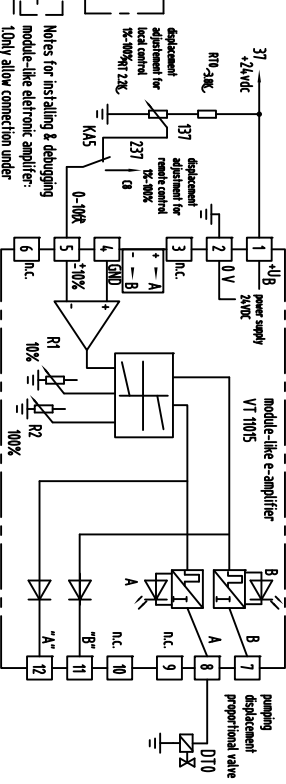
- Vehicle chassis circuit within a block between 2 points
- Remote control part within dashline block
- 4, multi-way valve within incdeter light, which is to be connected to vehicle circuit.
- Site installation of width incedater light, which is to be connected to the PA panel of power distribution of modified vehicle in the cab.
- X06 indicates 31-core modification plug on BBW control unit of chassis-modified vehicle.



module count	speed test	diesel engine speed test	reverse gear detection	forward	reverse	RPM +	RPM -	forward/backward	inching of main cylinder	inching of main cylinder	reverse	local	remote	safety dump valve for agitation
--------------	------------	--------------------------	------------------------	---------	---------	-------	-------	------------------	--------------------------	--------------------------	---------	-------	--------	---------------------------------

power status	main cylinder	oil/cooler	driving/pumping	left	right
--------------	---------------	------------	-----------------	------	-------

local / remote	boom	outrigger	outrigger	boom	emergency	start	stop	horn
----------------	------	-----------	-----------	------	-----------	-------	------	------



Notes for installing & debugging module-like electronic amplifier:
 1. Only allow connection under power-free status.
 2. Must use shield cable for given valve, solenoid & speed signal.
 3. Both ends of a shield cable must be grounded.

