

SHOWN MODEL STANDARD HOPPER UNIT

REED

CONCRETE PLACING
EQUIPMENT

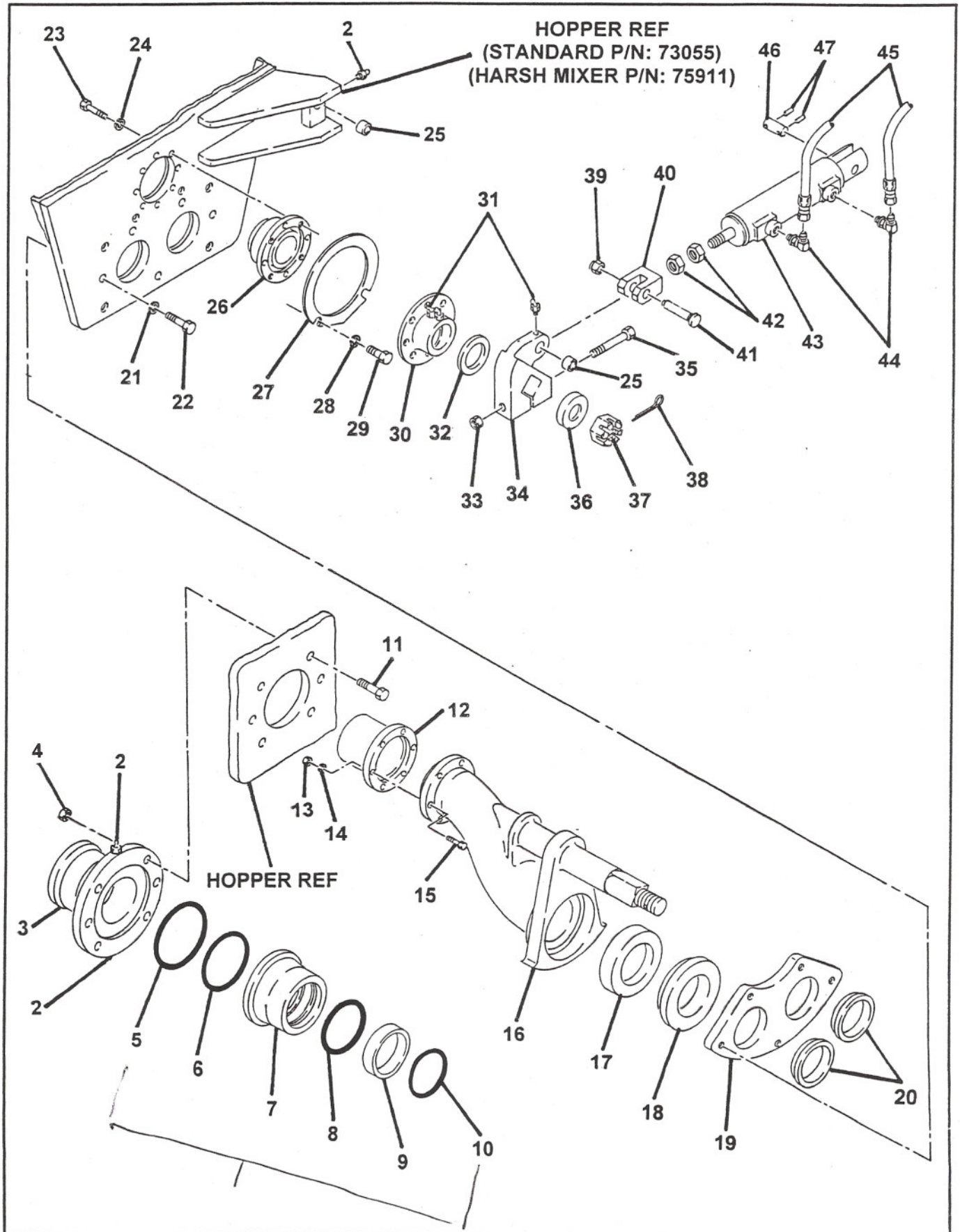
SWING VALVE ASSEMBLY

PARTS

GROUP 60

FIGURE 02

PAGE 03



REVISION:

REEDCONCRETE PLACING
EQUIPMENT**SWING VALVE ASSEMBLY****PARTS**

GROUP 60

FIGURE 02

PAGE 02

ITEM NO.	REED'S PARTS NO.	DESCRIPTION	QTY
		1 2 3 4 5	
-1	60-02	Assembly, Swing Valve (See Group 60, Figure 01 for NHA)	Ref
2		• Fitting, Grease STR	3
3	72482	• Outlet, Machine 5"	1
4		• Nut, 1/2	6
5	77761	• O-Ring, Large	1
6	77762	• O-Ring, Small	1
7	72309	• Housing, Outlet Seal	1
8	77765	• Seal, Outlet Thick	1
9	77763	• Band, Guide	1
10	77764	• Seal, Outlet Thin	1
11		• Bolt, Hex 5/8-18 x 3 1/4"	6
12	70042	• Nut, Nylock CHROMED OUTLET	6
13		• Washer, Lock	6
14		NUT	1
15		• Bolt, Hex	6
16	73190	• Weldment, Swing Tube	1
17	72311	• Ring, Thrust	1
18	72310	• Ring, Cutting	1
19	77852	• Plate, Wear	1
20	70047	• Ring, Anti Chip	2
21	74988	• Washer, Lock	5
22		• Bolt, Hex 3/4 x 1 3/4	5
23		• Bolt, Hex 9/16 x 2 3/4	4
24		• Washer, Lock	4
25	71011	• Race, Inner	2
26	73564	• Seal Flange Bearing	1
27	71384	• Ring, Locator	1
28		• Washer, Lock	2
29		• Bolt, Hex 3/4 x 2	2
30	70124	• Bearing, Flange	1

DASH (-) ITEM NOT ILLUSTRATED

REVISION:

REEDCONCRETE PLACING
EQUIPMENT**SWING VALVE ASSEMBLY****PARTS**
GROUP 60
FIGURE 02
PAGE 04

ITEM NO.	REED'S PARTS NO.	DESCRIPTION	QTY
		1 2 3 4 5	
31		• Fitting, Grease 45	3
32	70141	• Washer, Thrust	1
33		• Nut, 5/8	1
34	70127	• Crank, Bell	1
35		• Bolt, Hex 5/8 x 5 3/4	4
36	70125	• Spacer, Nut	1
37	70825	• Nut, Castle 1 1/2	1
38		• Pin, Safety	1
39		• Nut, 3/4 1.00	1
40	70143	• Clevis	1
41	70142	• Pin, Clevis	1
42		• Nut, Hex	2
43	71487 86221	• Sub-Assembly, Swing Ram Cylinder (See Group 60, Figure 03 for DET)	1
44		• Fitting, 90	2
45		• Assembly, Hose (See SCHEMATIC Section for REF)	1
46	74207	• Pin, Cylinder	1
47		• Pin, Roller	2

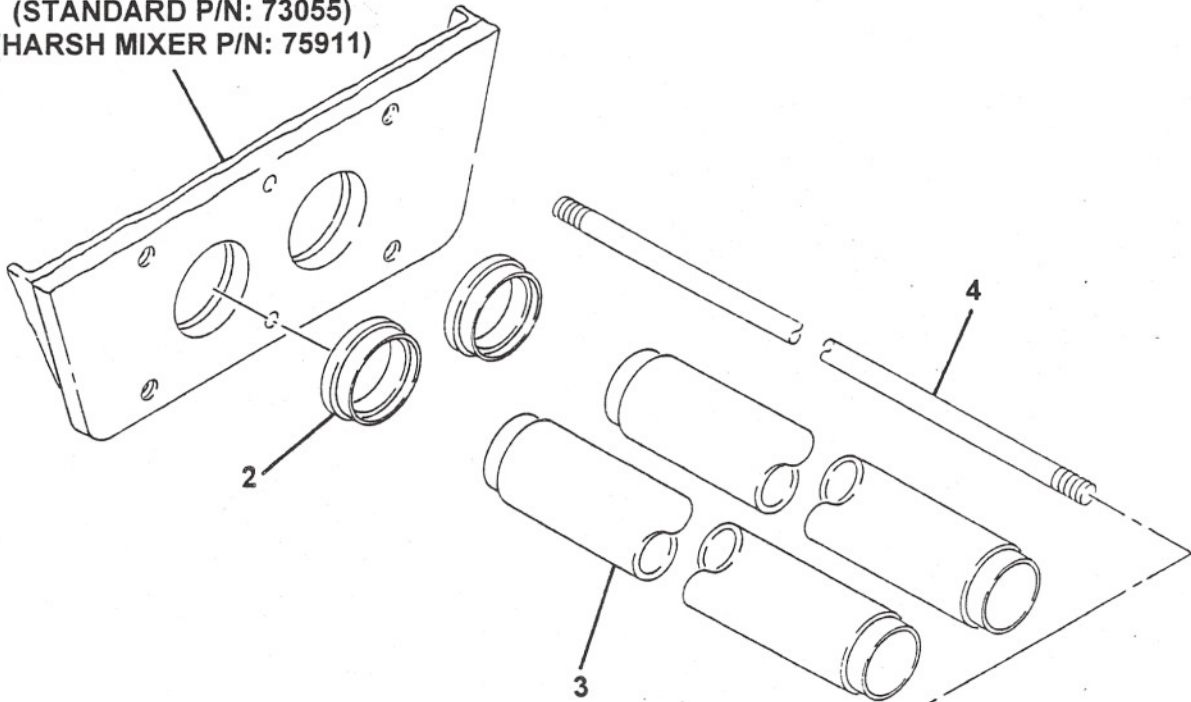
DASH (-) ITEM NOT ILLUSTRATED

79895 SEAL KIT-REAR

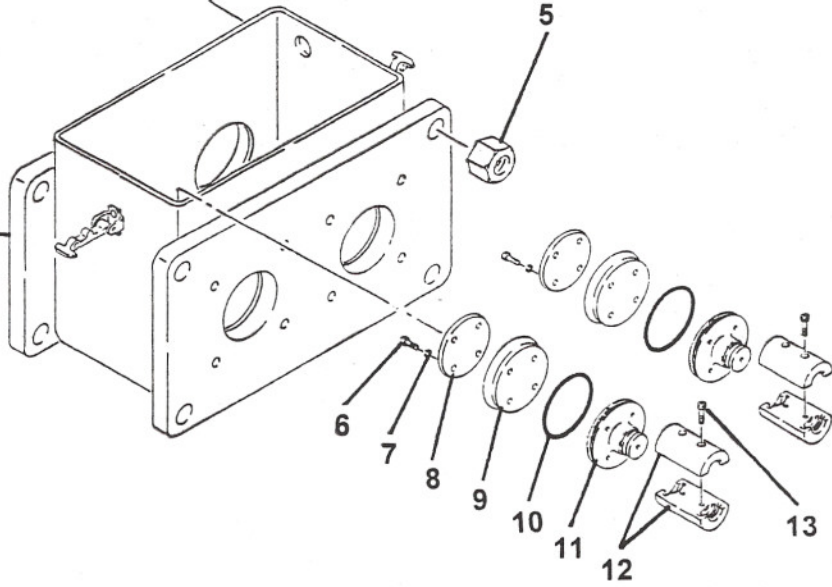
REVISION:

CONCRETE CYLINDER ASSEMBLY

HOPPER REF
(STANDARD P/N: 73055)
(HARSH MIXER P/N: 75911)



FLUSHBOX REF
(P/N: 73498)



REEDCONCRETE PLACING
EQUIPMENT**CONCRETE CYLINDER ASSEMBLY****PARTS**
GROUP 60
FIGURE 04
PAGE 02

ITEM NO.	REED'S PARTS NO.	DESCRIPTION	QTY
		1 2 3 4 5	
-1	60-04	Assembly, Concrete Cylinder (See Group 60, Figure 01 for NHA)	Ref
2	70318	• Adapter, Concrete Cylinder	2
3	73497	• Cylinder, Concrete	2
4	75882	• Rod, Tie	4
5		• Nut	4
6		• Bolt, 3/8 - 20 x 1 1/2	8
7		• Washer, Lock	8
8	70057	• Plate, Piston	2
9	70048	• Cup, Piston	2
10	74001	• O-Ring	2
11	70076	• Adapter, Concrete Piston	2
12	77896	• Coupling, Piston	2
13		• Screw, Cap	4

DASH (-) ITEM NOT ILLUSTRATED

REVISION: