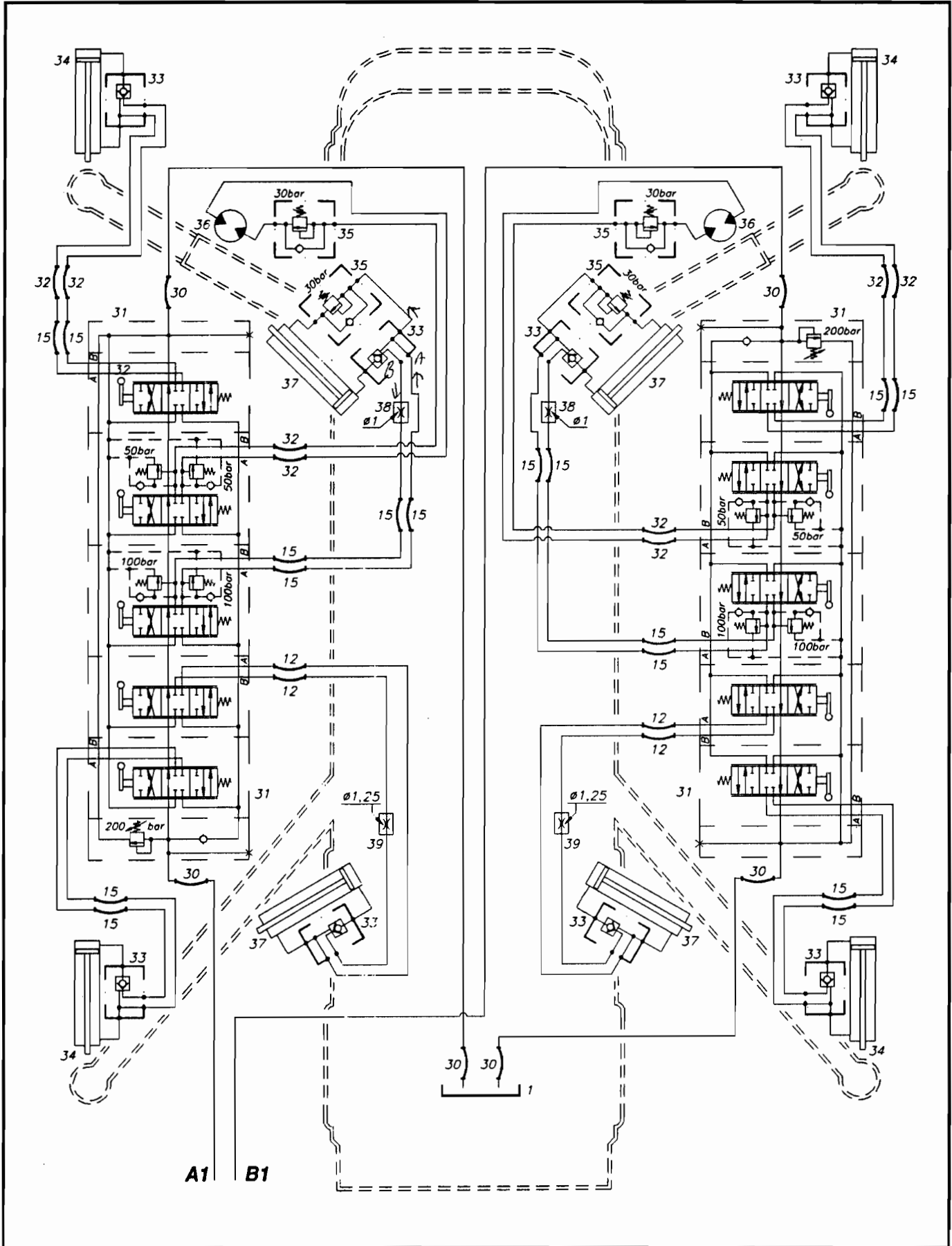
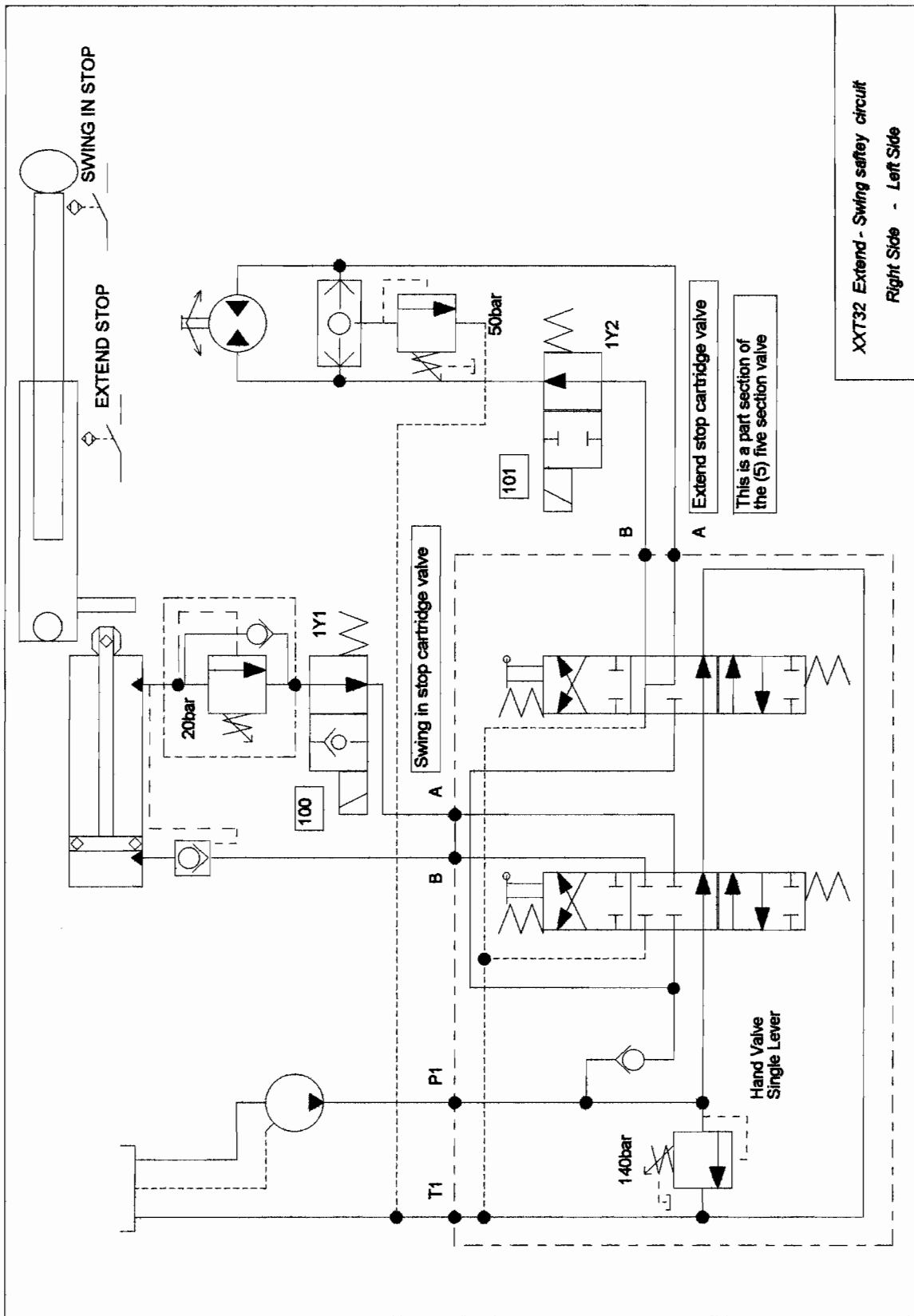
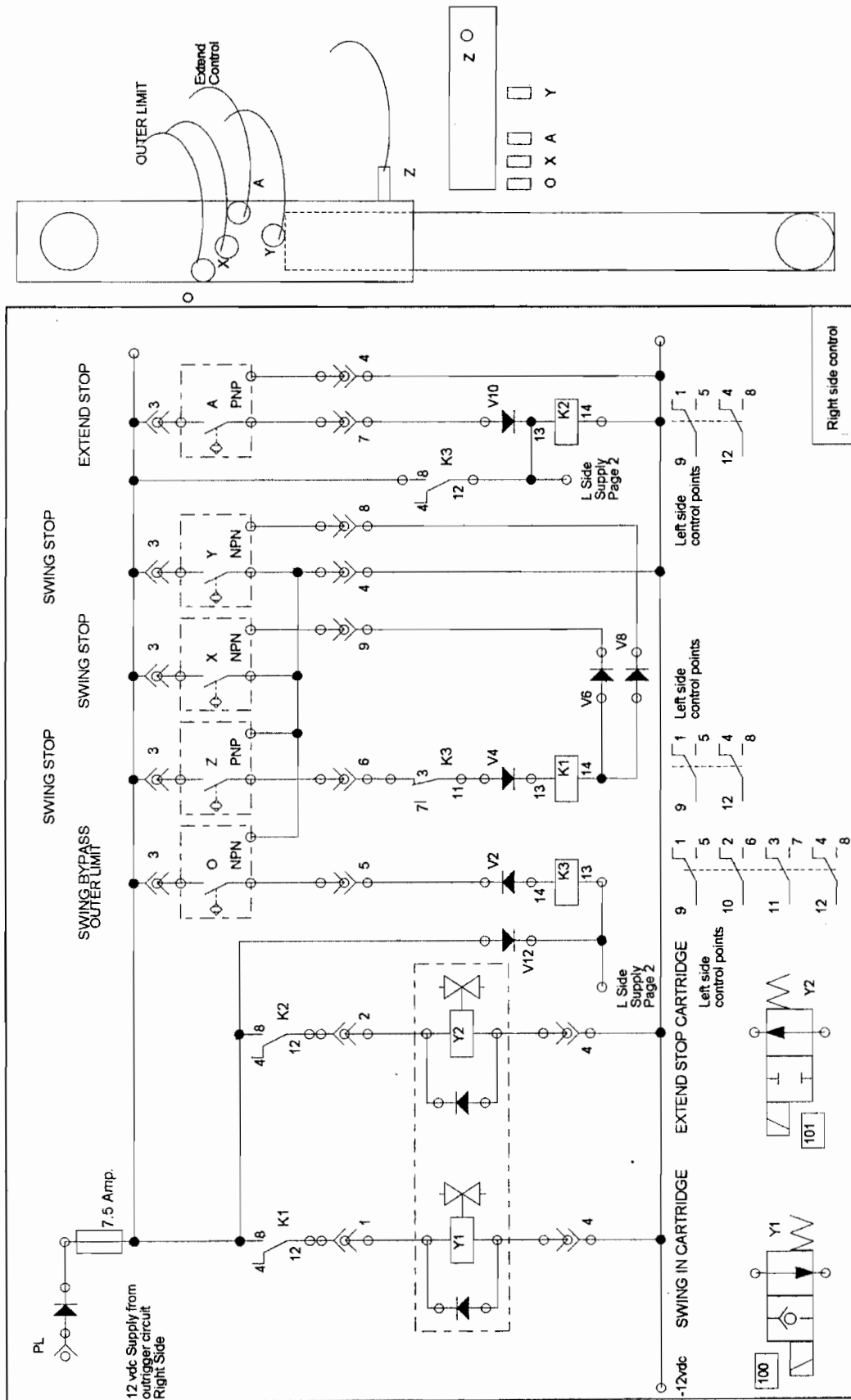


CODE NO.	REED'S PARTS NO.	DESCRIPTION					QTY
		1	2	3	4	5	
1	C-.SE	Tank, Hydraulic Oil					1
2	C-.WR	Valve, Inlet					1
3	C-.FF1	Hose, Flexible					1
4	C-.MP	Pump, Hydraulic					1
5	C-.FF2	Hose, Flexible					1
6	C-DM000	Gauge, Pressure					1
7	C-FF143.100	Hose, Flexible					1
8	C-DF101	Filter, Hydraulic					1
9	C-DD001/DD002	Distributor					1
10	C-FF101.080	Hose, Flexible					2
11	C-FF122.440	Hose, Flexible					8
12	C-FF122.125	Hose, Flexible					10
13	C-WL210	Valve, Flow Limiter					1
14	C-WL213	Valve, Flow Limiter					1
15	C-FF122.070	Hose, Flexible					24
16	C-WC120	Valve, Check					1
17	C-WC125	Valve, Check					1
18	C-.B4	Piston, Hydraulic					1
19	C-WL215	Valve, Flow Limiter					1
20	C-WL128	Valve, Check					6
21	C-.B3	Piston, Hydraulic					1
22	C-WL220	Valve, Flow Limiter					1
23	C-.B2	Piston, Hydraulic					1
24	C-WL218	Valve, Flow Limiter					1
25	C-.B1	Piston, Hydraulic					1
26	C-FF122.160	Hose, Flexible					2
27	C-WA105	Valve, Over Center					1
28	C-.MI	Motor, Hydraulic					1
29	C-FF101.045	Hose, Flexible					1
30	C-FF134.070	Hose, Flexible					8
31	C-DD009	Distributor					2



CODE NO.	REED'S PARTS NO.	DESCRIPTION					QTY
		1	2	3	4	5	
32	C-FF122.170	Hose, Flexible					8
33	C-WD101	Valve, Check					8
34	C-.L5	Piston, Hydraulic					4
35	C-WS103	Valve, Sequence					4
36	C-.MI1	Motor, Hydraulic					2
37	C-.M3	Piston, Hydraulic					4
38	C-WL110	Valve, 2 Direction Throttle					2
39	C-WL112	Valve, 2 Direction Throttle					2







# ELECTRIC SCHEMATIC (LEFT SIDE CONTROL)

