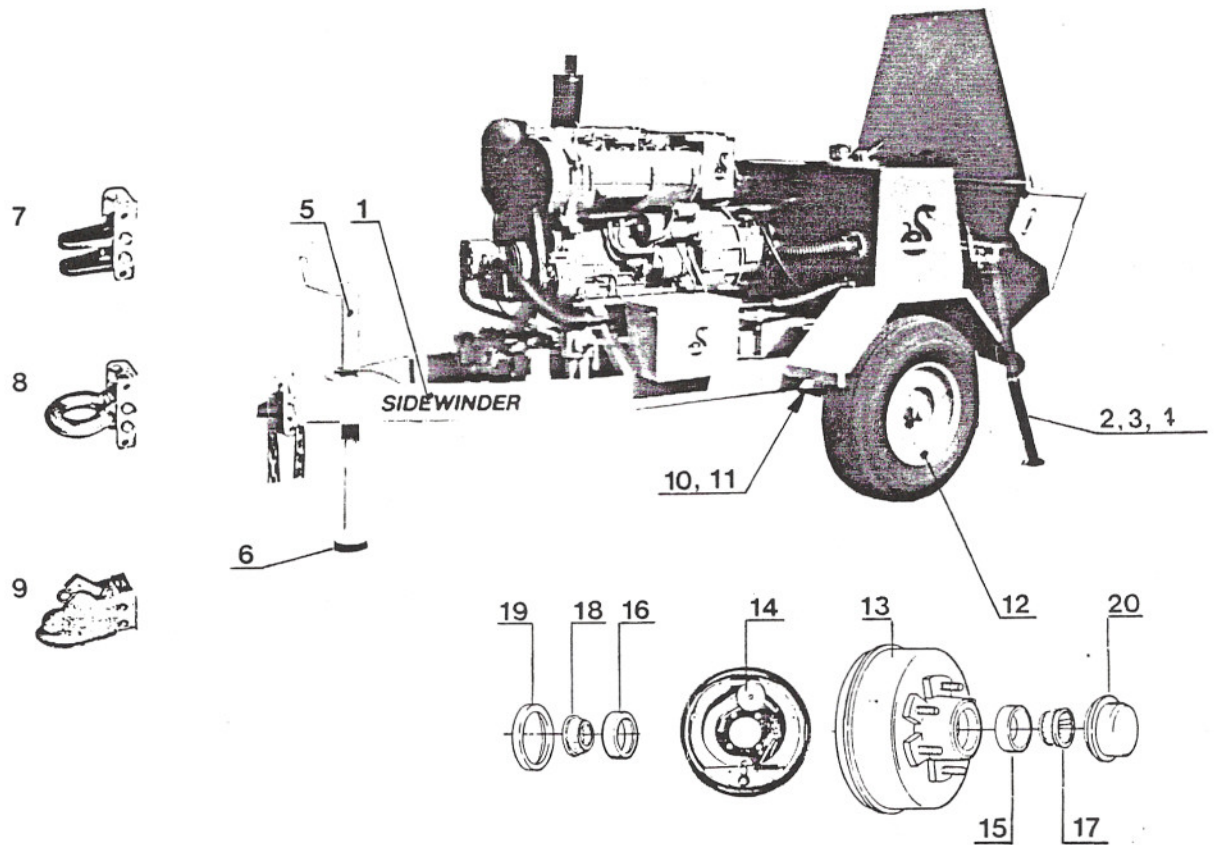


SECTION 10, PARTS INFORMATION, WARRANTY AND SERVICE

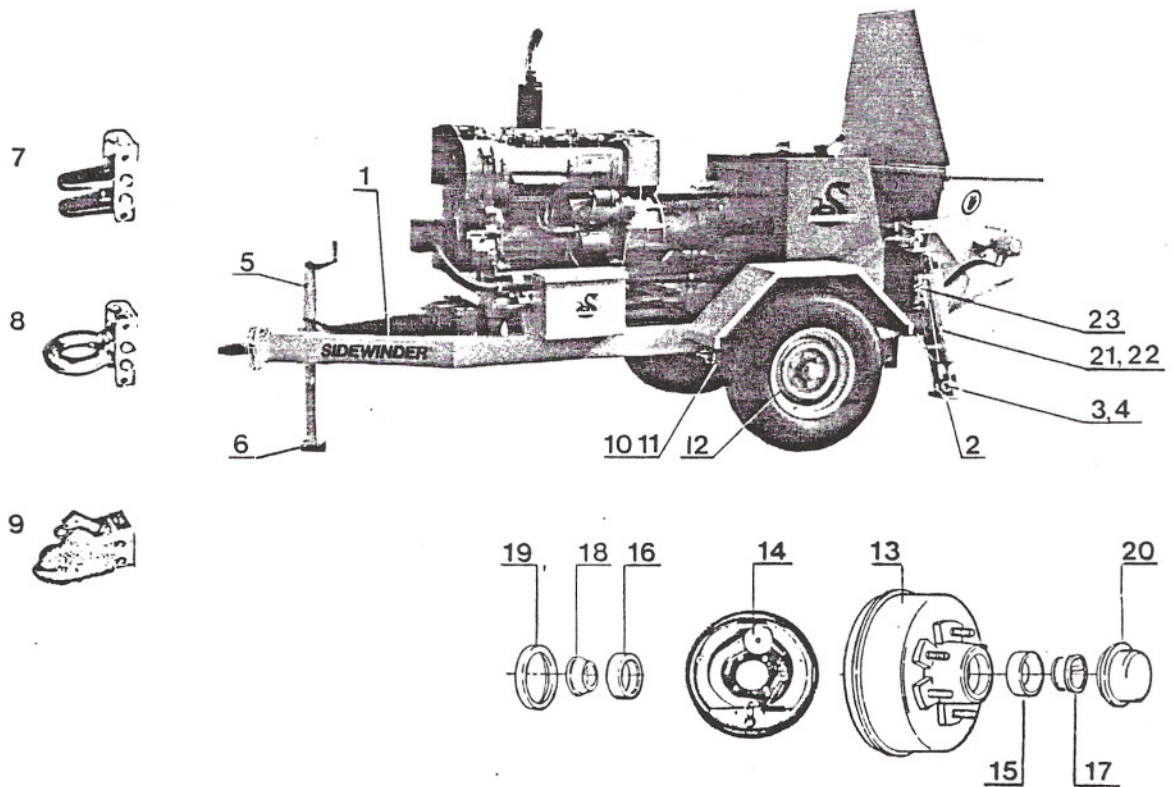
Page	1	Parts Information
	2	Warranty
	3	Frame and Axle Assembly (Az. Special-4045)
	4	Frame and Axle Assembly (Full-Dress-4050)
	5	Swingtube Assbly. (Az. Special-4045)
	6	Swingtube Assbly. (Full Dress-4050)
	7	Hydraulic Cylinder-Swing Tube (4045,4050)
	8	Hydraulic Cylinder Master (4045,4050)
	9	Hydraulic Cylinder Slave (4045,4050)
	10	Hydraulic Components (4045,4050)
	11	Control Box Assembly (4045,4050)
	12	Power Train Assembly (Az. Special-4045)
	13	Power Train Assembly (Full Dress-4050)
	14	Hydraulic Tank Assembly (Az. Special-4045)
	15	Hydraulic Tank Assembly (Full Dress-4050)
	16	Axial Piston Hydraulic Pump (Az. Special-4045)
	17	Axial Piston Hydraulic pump (Full Dress-4050)
	18	Agitator Assembly (Full Dress-4050)
	19	Parts breakdown
	20	Pressure Compensator,Parts Breakdown
	21	DR Compensator Spool & Seal Removal,Replacement
	22	Control Valve Replacement
	23	FR Flow Compensator Spool & Seal Removal,Replace

FRAME AND AXLE ASSEMBLY (Arizona Special)



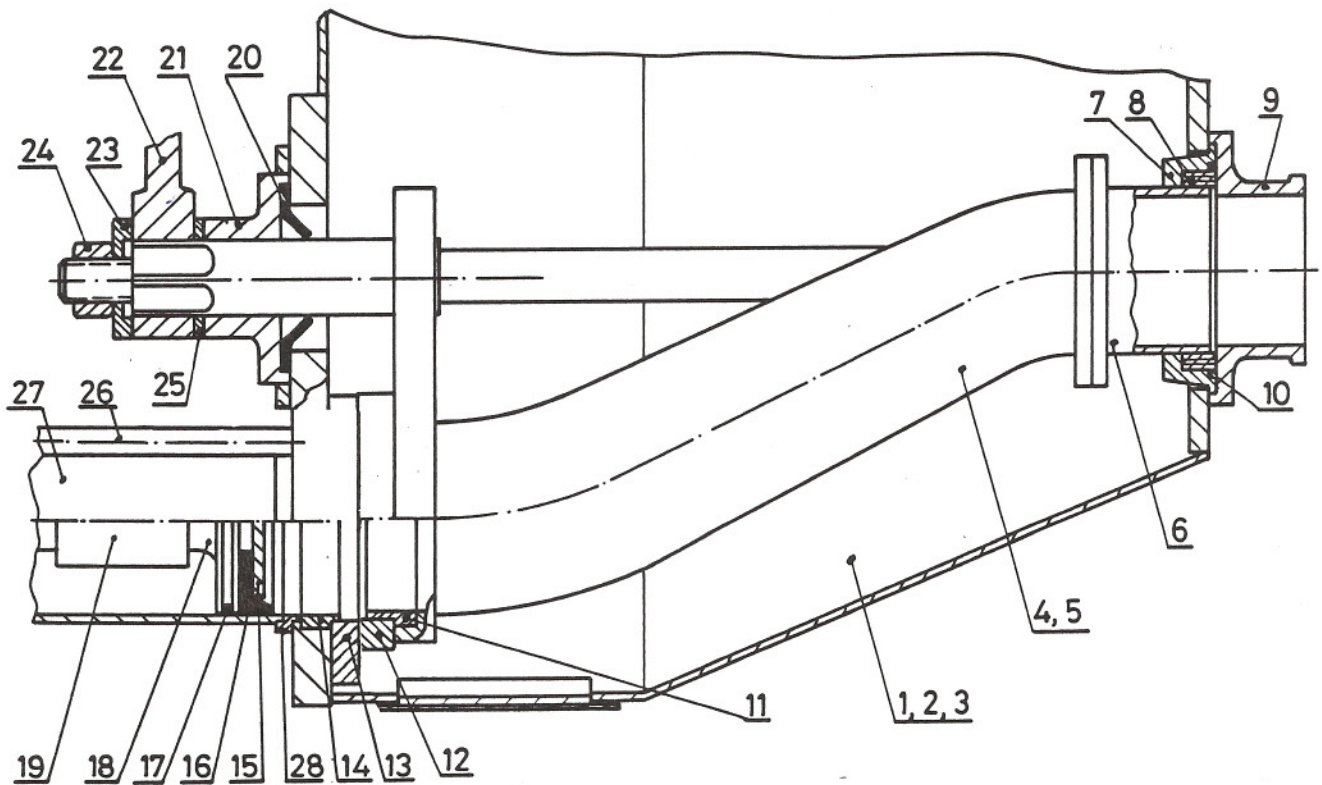
ITEM	DESCRIPTION	PART#	QTY/MACH.
1	Frame Weldment	70001	1
2	Rear Jack	76018	2
3	Jack Pin	70051	2
4	Safety Pin	80291	2
5	Top Wind Jack	71060	1
6	Front Jack Pad	70256	1
7	Clevis	71050	1
8	Lunette Eye 3"	71051	1
9	Coupler 2-5/16"	71099	1
10	Axle	71005	1
11	Spring Ass'y	71087	2
12	Wheel and Tire	71066	2
13	Brake Drum	71097	2
14	Electric Brake Kit (L.H. + R.H.)	71056	1
15	Outer Cup	71091	2
16	Inner Cup	71092	2
17	Outer Bearing	71098	2
18	Inner Bearing	71094	2
19	Grease Seal	71095	2
20	Dust Cup	71199	2

FRAME AND AXLE ASSEMBLY (FULL DRESS)



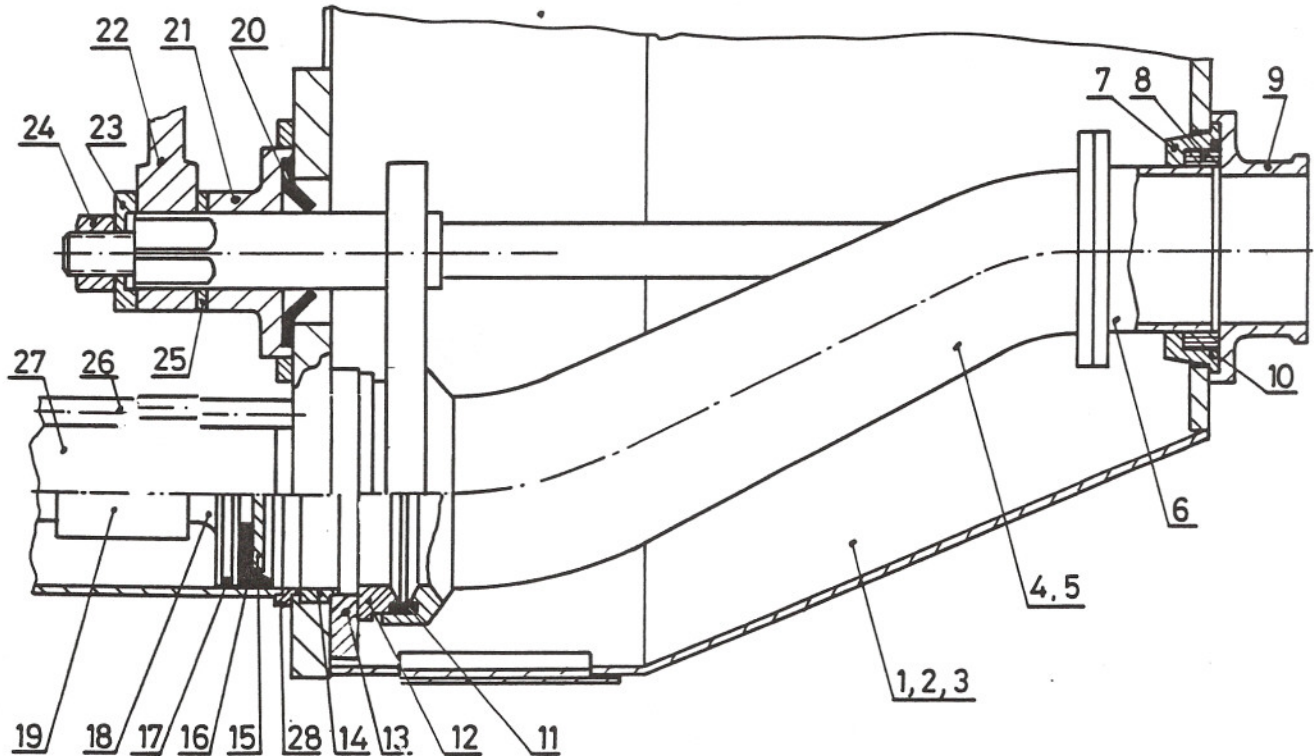
ITEM	DESCRIPTION	PART#	QTY/MACH.
1	Frame Weldment	70001	1
2	Rear Jack	70018	2
3	Clevis Pin	70168	4
4	Safety Pin	80288	4
5	Top Wind Jack	71060	1
6	Front Jack Pad	70256	1
7	Clevis	71050	1
8	Lunette Eye 3"	71051	1
9	Coupler 2-5/16"	71099	1
10	Axle	71005	1
11	Spring Ass'y	71087	2
12	Wheel and Tire	71066	2
13	Brake Drum	71097	2
14	Electric Brake Kit (L.H. + R.H.)	71056	1
15	Outer Cup	71091	2
16	Inner Cup	71092	2
17	Outer Bearing	71098	2
18	Inner Bearing	71094	2
19	Grease Seal	71095	2
20	Dust Cup	71199	2
21	*Hydraulic Cylinder L.H.	74499	2
22	*Hydraulic Cylinder R.H.	74498	2
*	Repair Seal Kit	74497	
23	Ball Valve	74521	2

SWINGTUBE ASS'Y, OUTLET, HOPPER



ITEM	DESCRIPTION	PART #	QTY/MACH
1	Hopper	70307	1
2	Hopper Grate (not shown)	70097	1
3	Hopper Lid (not shown)	70094	1
4	Swingtube ass'y (square shaft)	70116	1
5	Swingtube (Casting only)	70119	1
6	Outlet Chromed	70042	1
7	Outlet Seal Housing	70123	1
8	Outlet Seal	70049	1
9	5" Outlet	70122	1
10	O-Ring 262	74013	1
11	Wear Ring Locator	70050	1
12	Wear Ring	70046	1
13	Wear Plate (new style) Thread	70314	1 OR 77852 New style
14	Anti Chip Ring	70047	2
15	Piston Plate	70057	2
16	Piston Cup 6"	70048	2
17	O-Ring 433	74001	2
18	Concrete Piston Adaptor	70076	2
19	Piston Coupling	70077	2
20	Seal - Flange Bearing	70126	1-73564 NEW STYLE DRAWING 2 1/2 SHAFT
21	Flanged Bearing	70124	1
22	Bell Crank	70127	1
23	Nut Spacer	70125	1
24	Hex Nut 1-1/2 - 12 Selflocking	71021	1
25	Thrust Washer	70141	1
26	Tie Rod - Concrete Cylinder	70315	4
27	Concrete Cylinder	70067	2
28	Adaptor Ring 7"/6"	70318	2

SWINGTUBE ASS'Y, OUTLET, HOPPER

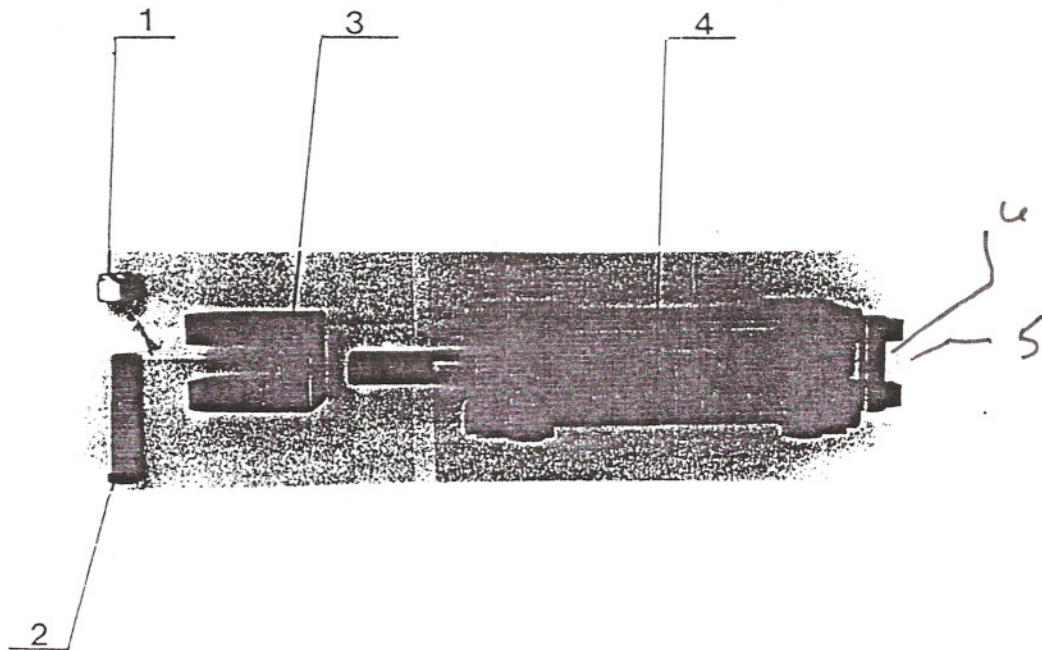


ITEM	DESCRIPTION	PART #	QTY/MACH
1	Hopper	70307	1
2	Hopper Grate (not shown)	70097	1
3	Hopper Lid (not shown)	70094	1
4	Swingtube ass'y (square shaft)	70316	1
5	Swingtube (Casting only)	70119	1
6	Outlet Chromed	70042	1
7	Outlet Seal Housing	70123	1
8	Outlet Seal	70049	1
9	5" Outlet	70122	1
10	O-Ring 262	74013	1
11	Seal Strip	70313 <i>or 70313B</i>	1 - BLACK OR YELLOW
12	Wear Ring	70310	1
13	Wear Plate (new style)	70314	1
14	Anti Chip Ring	70047	2
15	Piston Plate	70057	2
16	Piston Cup 6"	70048	2
17	O-Ring 433	74001	2
18	Concrete Piston Adaptor	70076	2
19	Piston Coupling	70077	2
20	Seal - Flange Bearing	70126	1
21	Flanged Bearing	70124	1
22	Bell Crank	70127	1
23	Nut Spacer	70125	1
24	Hex Nut 1-1/2 - 12 Selflocking	71021	1
25	Thrust Washer	70141	1
26	Tie Rod - Concrete Cylinder	70315	4
27	Concrete Cylinder	70067	2
28	Adaptor Ring 7"/6"	70318	2

Belts 1/2 x 20 x 3"

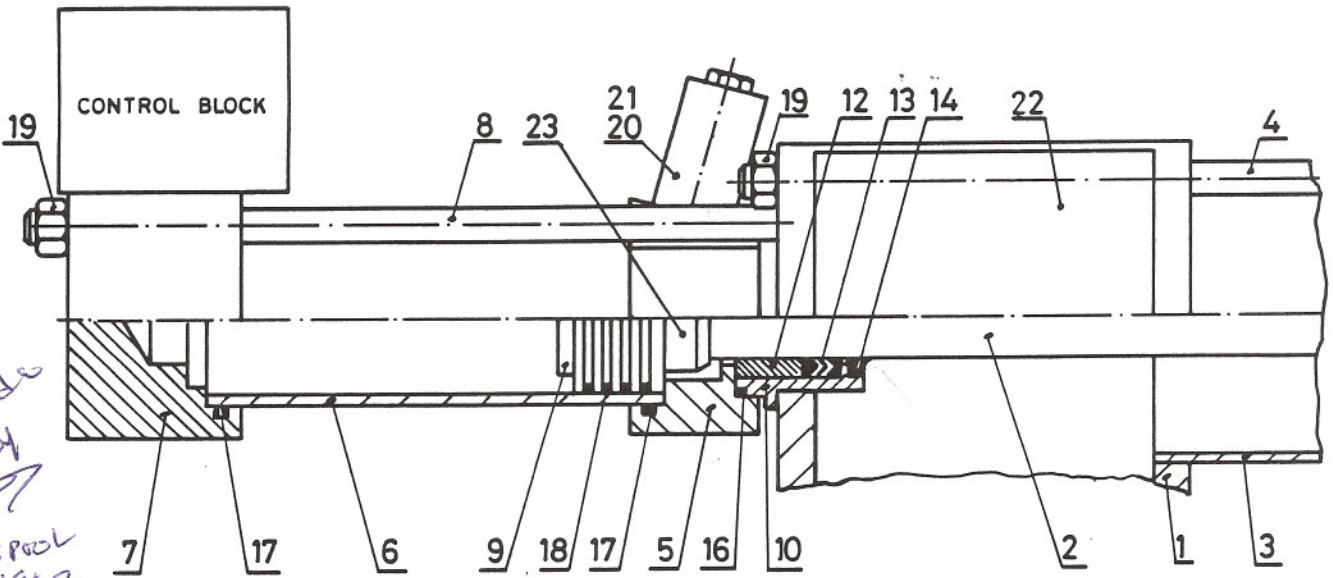
HYDRAULIC CYLINDER - SWING TUBE

PART# 74531



ITEM	DESCRIPTION	PART#	QTY/MACH
1	Hex Head Nut 3/4-10 Selflocking	80023	1
2	Clevis Pin	70142	1
3	Clevis	70143	1
4	Hydraulic Cylinder	74531 86221	1
4A	Cush Cyl New style w/fitting	75087	1
-	Jam Nut 1" UNF (not shown) (used as locknut for rod position)	80013	1 2
-	Tab - Washer (not shown) (used to lock jam nut in position)	70281	1
5	INNER RACE	71011	1
6	REAR PIN	74207	1
	SEAL KIT FOR 74531	70591	
	SEAL KIT FOR 75087	75102	

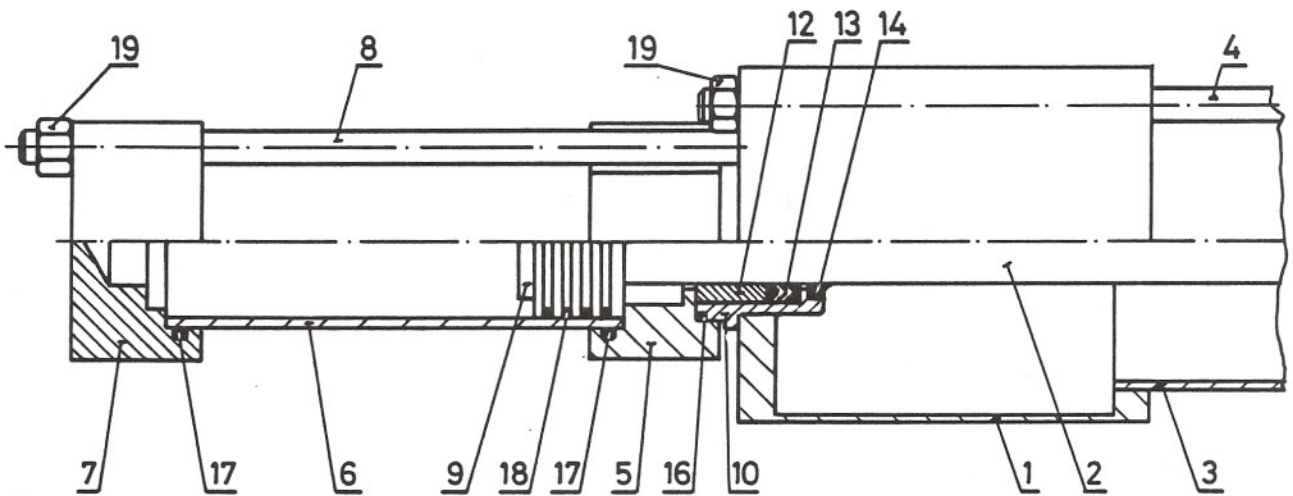
HYDRAULIC CYLINDER MASTER



For Head side ONLY
5 Pcs 74802 74804 spring

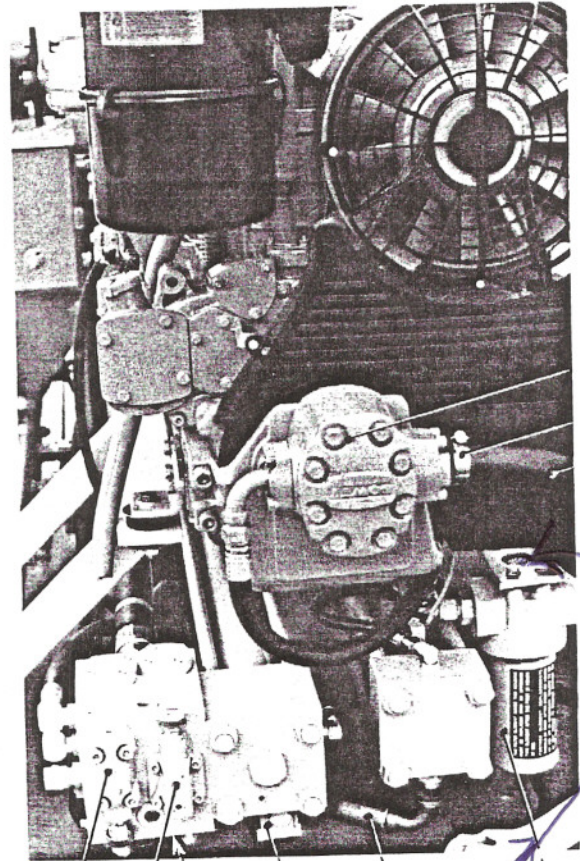
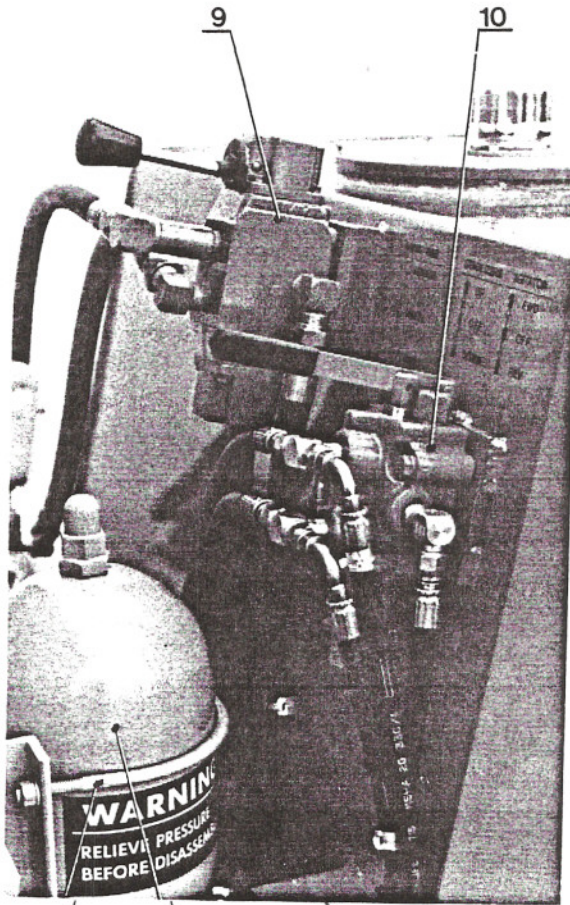
ITEM	DESCRIPTION	PART #	QTY/MACH
1	Flushbox	70300	1
2	Piston Rod Master	70071	1
3	Concrete Cylinder	70067	2
4	Tie Rod - Concrete Cylinder	70315	4
5	Gland End Cap Master	70082	1
6	Hydraulic Cylinder Master	70069	1
7	Control Block Assembly	70085	1
8	Tie Rod - Master Ram	70074	4
9	Hydraulic Piston 3-1/4"	70073	2
10	Gland Housing	70433	2
11			
12*	Bronze Bushing	74150	2
13*	Gland Packing 2"	74101	2
14*	Wiper 2"	74131	2
15			
16*	O-Ring 336	74011	2
17*	O-Ring 240	74012	4
18	Piston Ring 3-1/4"	74143	8
19	Hex Nut 3/4-16	80016	8
20	Impulse Valve	74504	1
21*	O-Ring 115 (to Impulse Valve)	74023	1
22	Flushbox Lid	70336	1
23	Hex Nut 1-1/4 - 12	80011	4
*	Repair Kit Hydraulic Cylinder	74204	1

HYDRAULIC CYLINDER SLAVE



ITEM	DESCRIPTION	PART #	QTY/MACH.
1	Flushbox	70300	1
2	Piston Rod Slave	70072	1
3	Concrete Cylinder	70067	2
4	Tie Rod - Concrete Cylinder	70315	4
5	Gland End Cap Slave	70083	1
6	Hydraulic Cylinder Slave	70070	1
7	End Cap	70084	1
8	Tie Rod - Slave Ram	70075	4
9	Hydraulic Piston 3-1/4"	70073	2
10	Gland Housing	70433	2
11			
12*	Bronze Bushing	74150	2
13*	Gland Packing 2"	74101	2
14*	Wiper 2"	74131	2
15			
16*	O-Ring 336	74011	2
17*	O-Ring 240	74012	4
18	Piston Ring 3-1/4"	74143	8
19	Hex Nut 3/4-16	80016	8
20	Hex Nut 1-1/4 - 12	80011	4
*	Repair Kit Hydraulic Cylinder	74204	1

HYDRAULIC COMPONENTS



ITEM DESCRIPTION

ITEM# QTY/MACH.

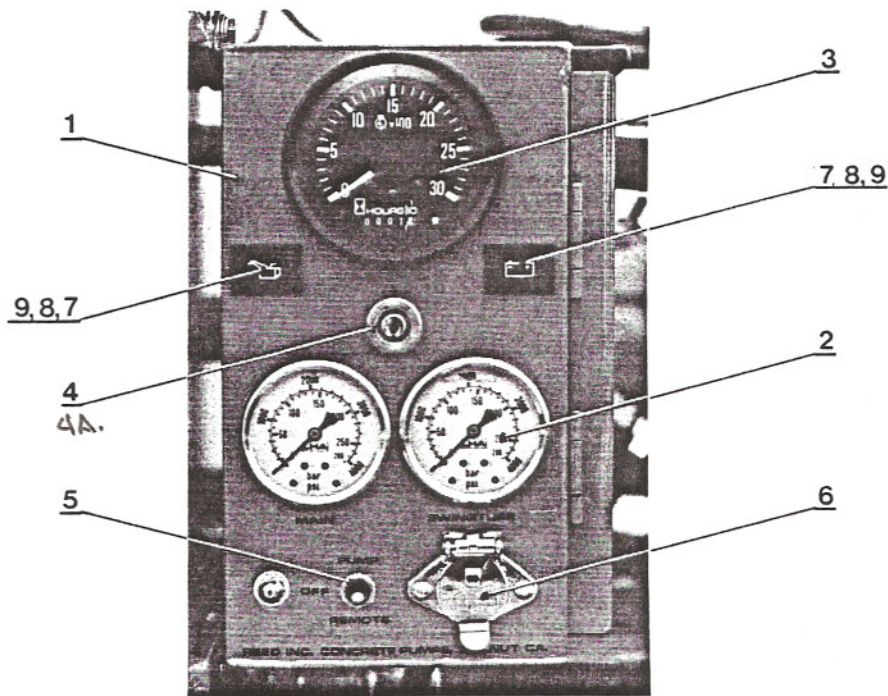
*1	Pump Aux.	74545	1
2	Unloader Valve	74505	1
3	Relief Valve #74470 SAME BOLT PATTERN	74506	1
4	Double Oil Pilot Check Valve ASTASOS	74547	1
5	Check Valve Kit	74543	1
6	Hydraulic Filter	74511	1
	Replacement Element Betamicron	74512	1
*7	Hose 1-1/4" I.D.	74755	1
*8	Clamp to Hose	71022	2
9	Directional Control Valve 4 Way	74540	1
10	Directional Control Valve 3/8"	74559	1
11	Accumulator	74515	1
	Bladder to Accumulator	74516	1
12	U-Bolt	70066	1
13	Hose	74641	1

* Only when VM Engine fitted. See Page 9D when Duetz Engine fitted.

14 Dump Valve - Swing 74517 1

O-RING KIT FOR FILTER
 FILTER
 #74913
 INDICATOR VISUAL CLOGGING
 #85462

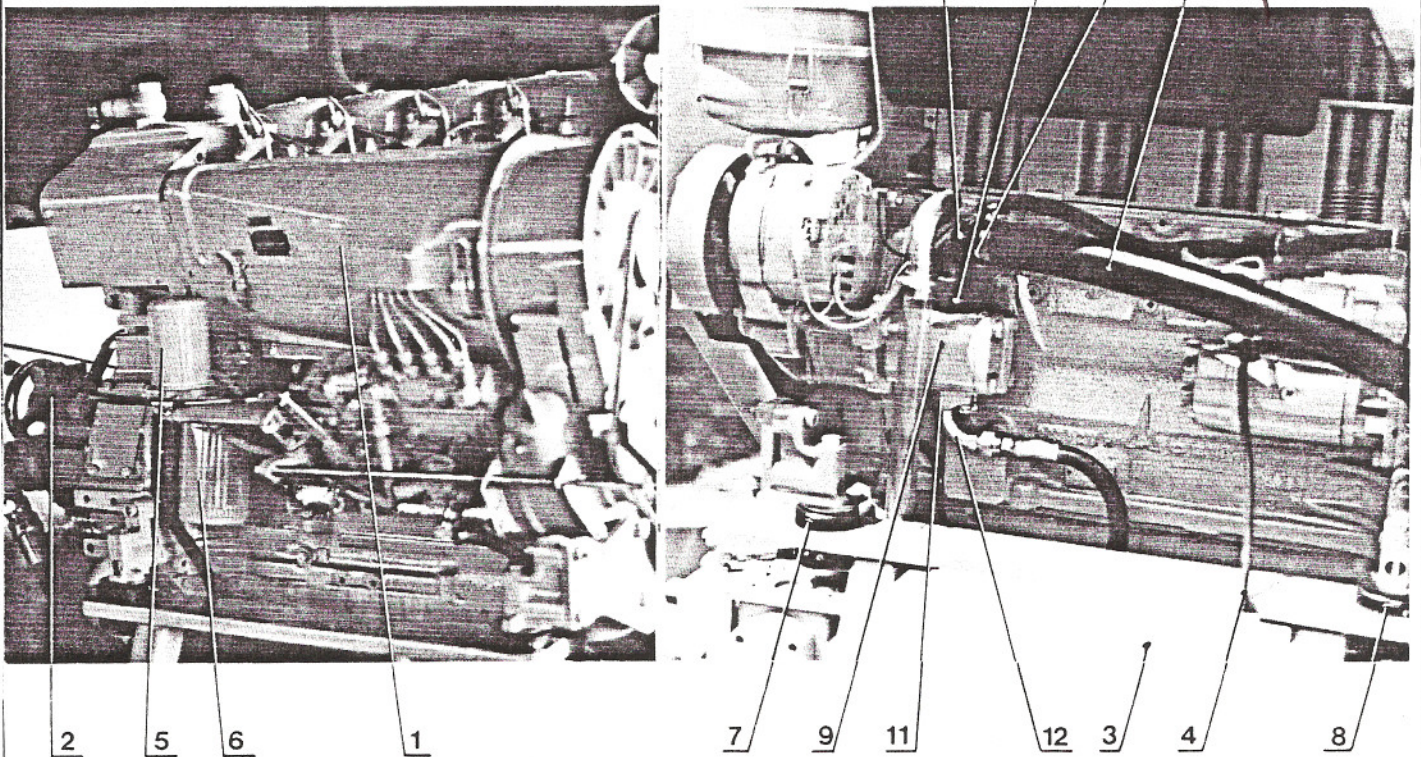
CONTROL BOX ASSEMBLY (70326)



ITEM	DESCRIPTION	PART#	QTY/MACH.
1	Control Box	70325	1
2	Pressure Gauge	74562	2
3	Alt/Hour/Tach Gauge 0-4000	71119	1
	Alt/Hour/Tach Gauge 0-3000	71118	1
4	Ignition Switch	71117	1
4A.	" " " " <i>VM DEUTZ</i>	<i>71154</i>	1
5	Switch ON-Off-ON	72003	1
6	Plug Remote/Panel Mount	72002	1
7	Instrument Panel lamp (round)	72021	2
	Lamp Ass'y Oil (square)	72026	1
	Lamp Ass'y Alternator (square)	72027	1
8	Bulb to Instr. Panel lamp (round)	72022	2
9	Bulb to Lamp Ass'y (square)	72028	2
*	Minicheck Coupling	74605	2
*	Hose-Gauge	74604	2
*	Gauge Adapter	74606	2
	<i>DEUTZ Key</i>	<i>71155</i>	
	<i>remote</i>	<i>75000</i>	
*	Not shown (inside control box)		

POWER TRAIN ASSEMBLY (ARIZONA SPECIAL WITH DEUTZ)

DEUTZ
 MANIFOLD/MUFFLER
 ①-2160568
 GASKETS-④
 H15724.7



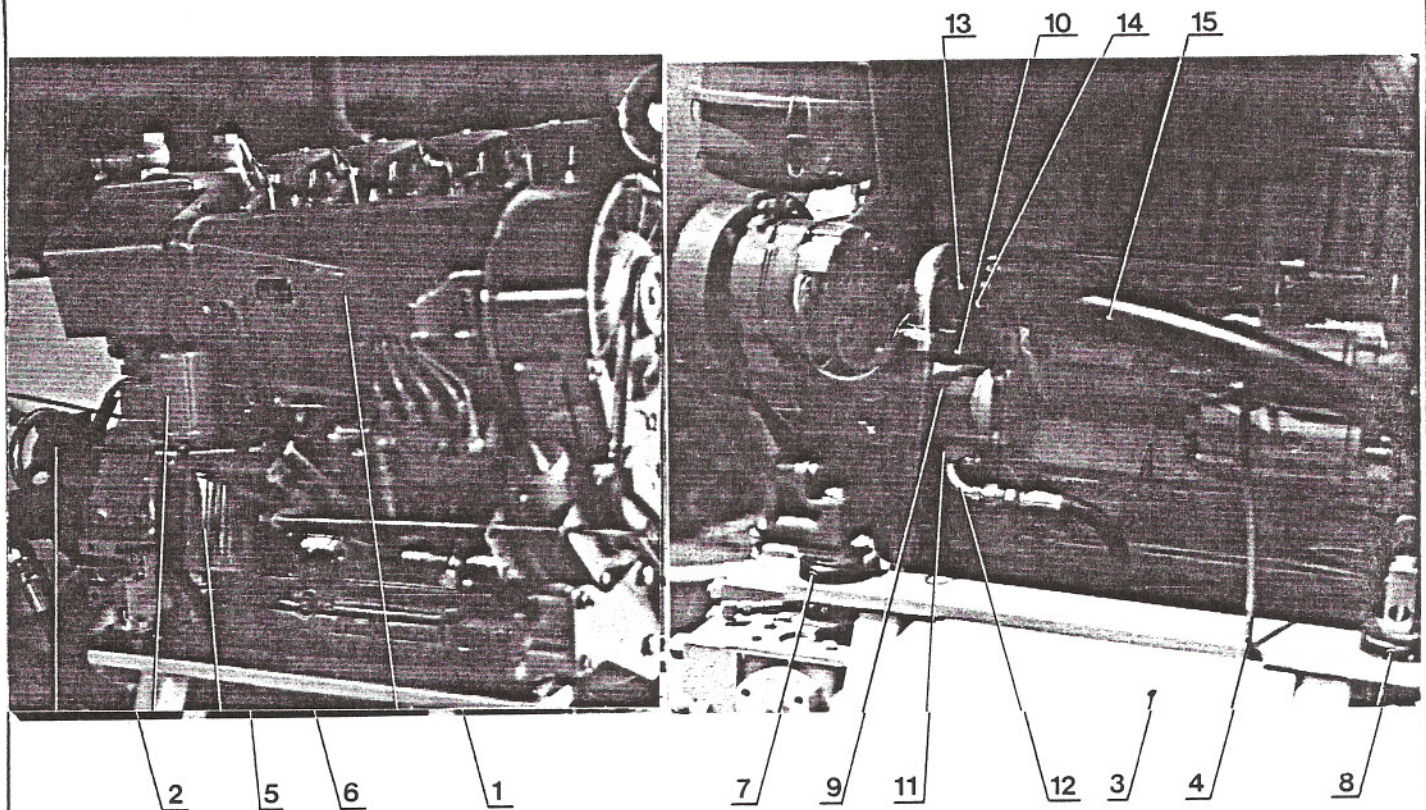
9A PUMP AUX. DOUBLE

74496

ITEM	DESCRIPTION	PART#	QTY/MACH.
1	Engine	71044	1
2	Hydraulic Pump Main	74538	1
3	Battery	72013	1
4	Battery Cable	72016	2
5	Fuel Filter Element	74501	1
6	Oil Filter Element	74500	1
7	Engine Mount Front	71125	2
8	Engine Mount Rear	71126	2
9	Pump Aux. <i>SINGLE</i>	74548	1 ← SEAL KIT #74492
10	SAE Flange	74603	1
11	SAE Flange Kit 3/4"	74689	1
12	Split Flange-Flare 90 Deg.	74742	1
13	Steet L	10218	1
14	Nipple (cut in half)	10215	1
15	Hose	74715	47"LG.

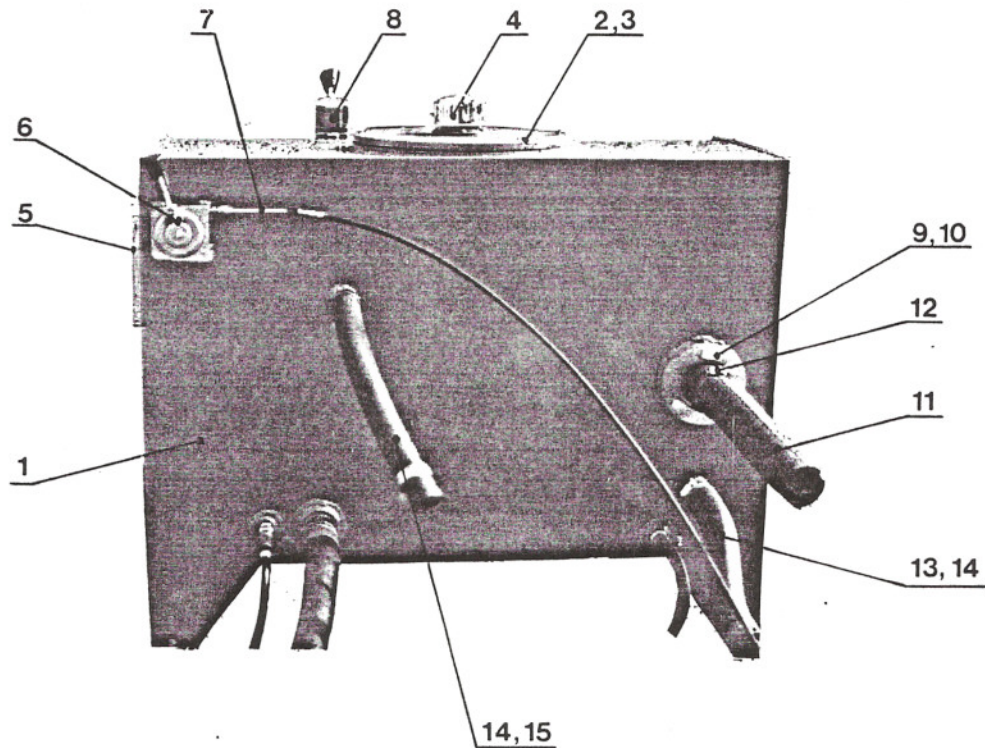
ENG. GEAR FOR AUX PUMP 70441 1
 STUD AUX PUMP 70339 2
 STATOR 70450

POWER TRAIN ASSEMBLY (FULL DRESS WITH DEUTZ)



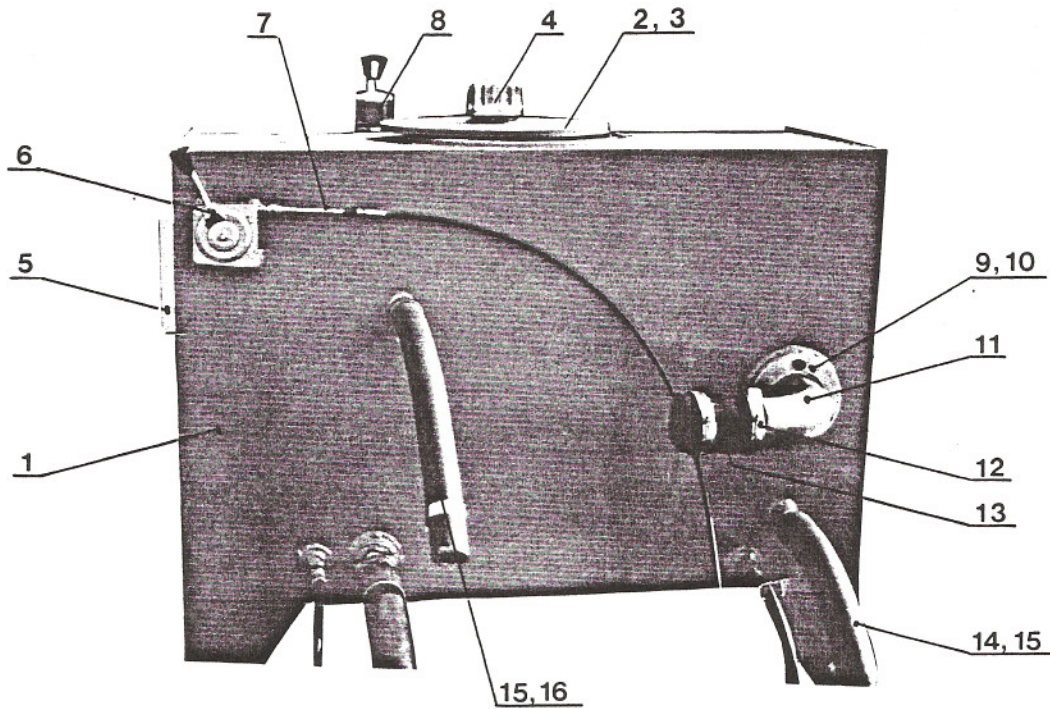
ITEM	DESCRIPTION	PART#	QTY/MACH.
1	Engine	71044	1
2	Hydraulic Pump Main	74530	1
3	Battery	72013	1
4	Battery Cable	72016	2
5	Fuel Filter Element	74501	1
6	Oil Filter Element	74500	1
7	Engine Mount Front	71125	2
8	Engine Mount Rear	71126	2
9	Pump Aux.	74548	1
10	SAE Flange	74603	1
11	SAE Flange Kit 3/4"	74689	1
12	Split Flange-Flare 90 Deg.	74742	1
13	Steet L	10218	1
14	Nipple (cut in half)	1021	1
15	Hose	74715	47"LG.

HYDRAULIC TANK ASSEMBLY (RESERVOIR)



ITEM	DESCRIPTION	PART#	QTY/MACH
1	Hydraulic Tank (Weldment only)	70058	1
2	Tank Top Cover	70062	1
3	O-Ring 450 (to Tank Top Cover)	74014	1
4	Filler Breather	74508	1
5	Sight/Temperature Gauge	74509	1
6	Control - Engine Speed	71008	1
7	Cable - Engine Speed	71007	1
8	Directional Control Valve	74540	1
9	Suction Outer	70064	1
10	O-Ring 230 (to Suction Outer)	74015	1
11	Suction Hose	74712	1
12	Clamp to Suction Hose	71078	2
13	Hose 1-1/4" I.D.	74754	1
14	Clamp to Hose	71022	4
15	Hose 1" I.D.	74743	1

HYDRAULIC TANK ASSEMBLY (RESERVOIR)

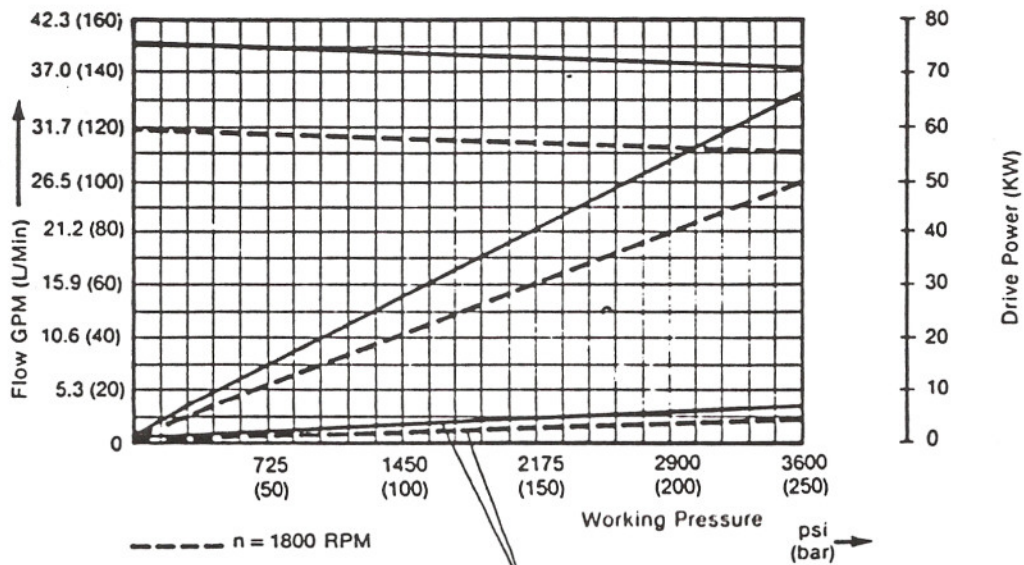
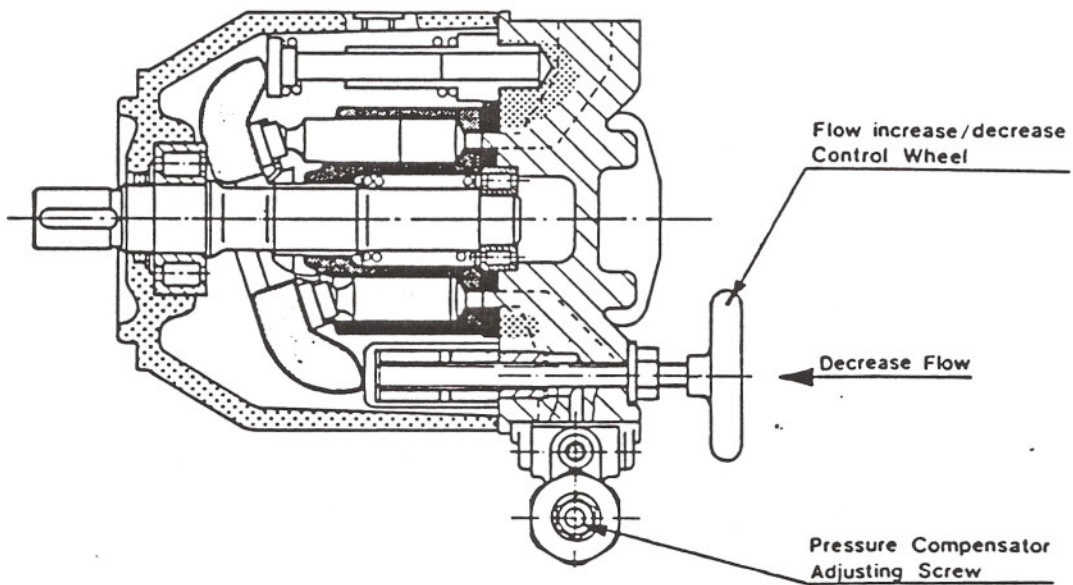


ITEM	DESCRIPTION	PART#	QTY/MACH.
1	Hydraulic Tank (Weldment only)	70058	1
2	Tank Top Cover	70062	1
3	O-Ring 450 (to Tank Top Cover)	74014	1
4	Filler Breather	74508	1
5	Sight/Temperature Gauge	74509	1
6	Control - Engine Speed	71008	1
7	Cable - Engine Speed	71007	1
8	Directional Control Valve	74540	1
9	Suction Outer	70064	1
10	O-Ring 230 (to Suction Outer)	74015	1
11	Suction Pipe	70162	1
12	Suction Hose 2-1/2" I.D.	74751	1
13	Clamp to Suction Hose	71078	2
14	Hose 1-1/4" I.D.	74754	1
15	Clamp to Hose	71022	4
16	Hose 1" I.D.	74743	1

AXIAL PISTON HYDRAULIC PUMP

PART # 74538
Service Exchange Unit Available.

- good suction characteristics
- peak pressure 3600 psi
- low noise level
- long service life
- axial and radial loading of drive shaft is permitted
- high power/weight ratio
- cast iron housing
- fast response times



*Seah Kit #74209
Hayes Coupler #74482*

Power Consumption
In Compensated Position

AXIAL PISTON HYDRAULIC PUMP

PART # 74530

Service Exchange Unit Available.

Description

Variable displacement pump, axial piston, bent axis design, for hydrostatic transmissions in open circuits.

The flow is proportional to the drive speed and the displacement and is steplessly variable at constant drive speed.

Comprehensive programme of control devices for every control and regulating function.

Special Features

High performance rotary group with well-proven spherical control area offering the following advantages: self-centering, low peripheral speed, high efficiency.

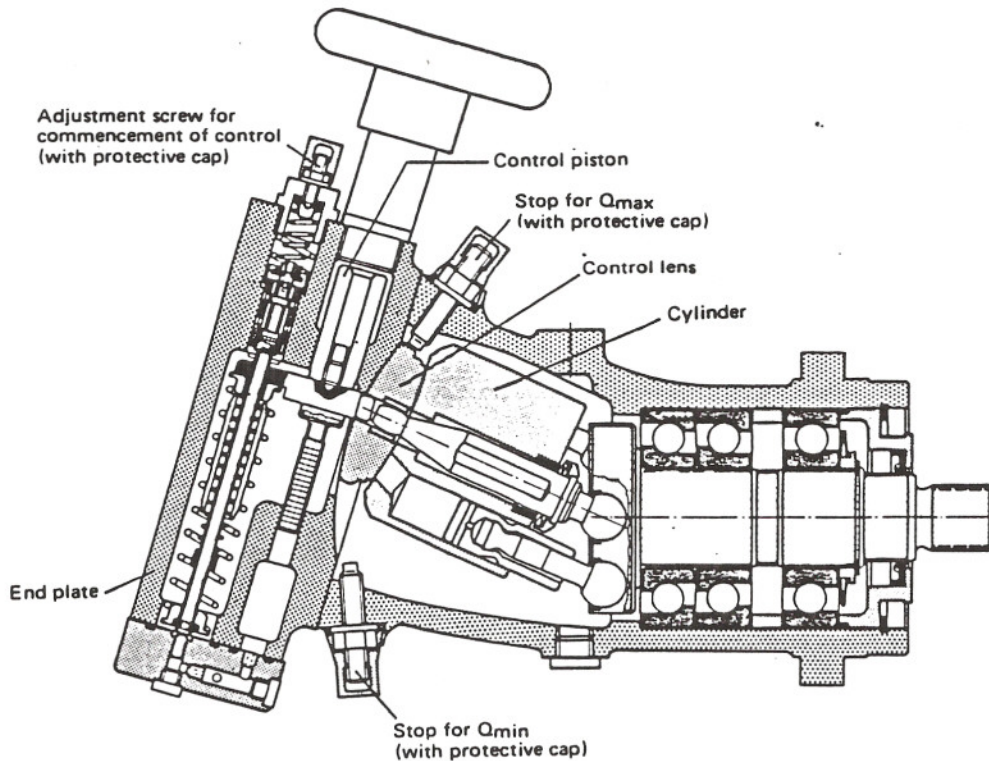
Long service life due to robust rolling bearings.

Drive shaft will support radial loads.

ISO mounting flange (to ISO/DIS 3019/11, 78-02)

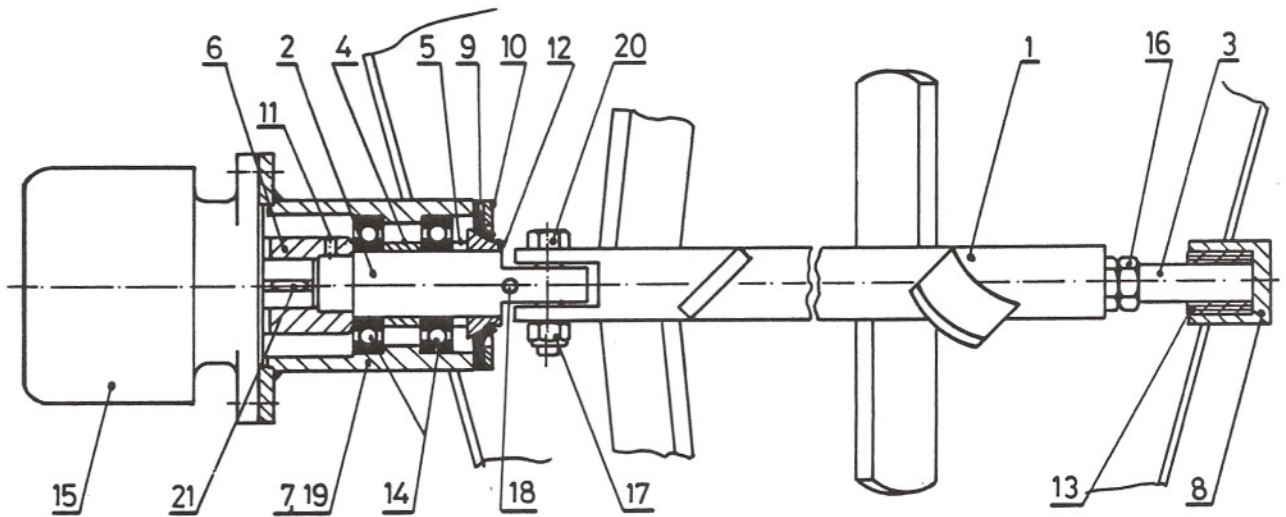
Operation on fire-resistant fluids.

Low noise level.



Hayes Coupler # 74484
11 Spacer Ring # 74483

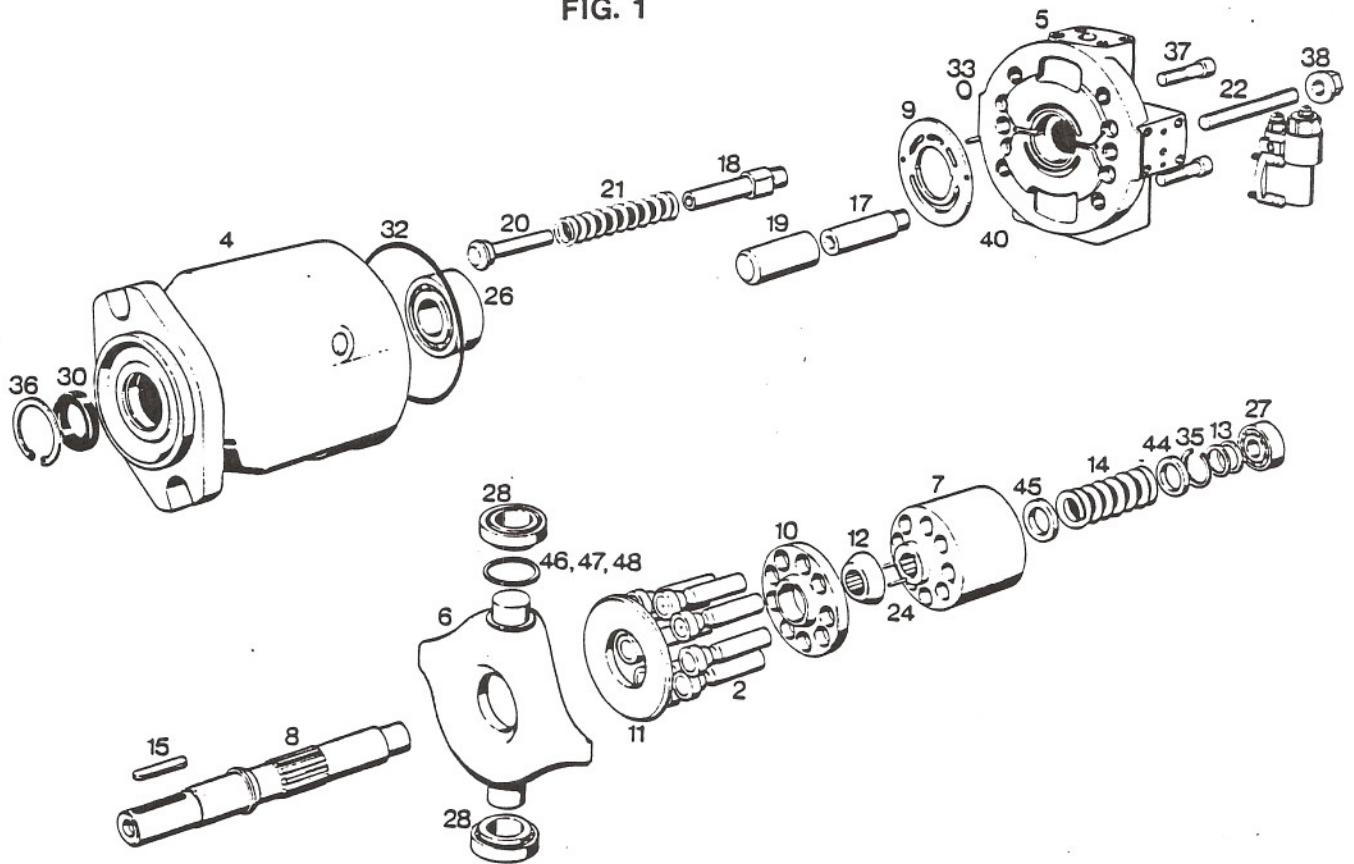
AGITATOR ASSEMBLY



ITEM	DESCRIPTION	PART #	QTY/MACH
1	Agitator Shaft with Paddles	70202	1
2	Shaft	70224	1
3	Idler Shaft	70214	1
4	Spacer Long	70215	1
5	Spacer Short	70216	1
6	Motor Coupling	70225	1
7	Bearing Housing	70223	1
8	Idler Bearing Housing	70210	1
9	Seal	70212	1
10	Seal Flange	70211	1
11	Set Screw	80374	1
12	Wear Ring	71018	1
13	Idler Bearing	70219	1
14	Bearing Single Row Ball	71019	2
15	Hydraulic Motor	74529	1
16	Hex Nut M 20	80030	1
17	Hex Nut Selflocking 1/2-13	80019	1
18	Spring Pin 3/16 x 1-3/4	80298	1
19	Grease Fitting	80516	1
20	Hex Head Cap Screw 1/2-13 x 2-1/2	80156	1
21	Key	30216	1

*E74993
SEM KIT*

FIG. 1



Item No.	Description
1	Pilot valve
2	Piston
4	Pump housing (front) SAE
5	Pump housing (rear): SAE-HFA
6	Pump housing (rear): Cradle
7	Cylinder barrel
8	Drive shaft:
9	Control plate
10	Retaining plate
11	Sliding disc
12	Retaining ball
13	Spacer shim
14	Spring
15	Shaft key
17	Piston guide
18	Piston guide
19	Control piston
20	Reciprocating piston
21	Spring
22	Threaded pin
24	Needle roller
26	Roller bearing
27	Roller bearing
28	Tapered roller bearing
*30	Shaft seal ring
*32	O-ring
*33	O-ring
35	Retaining ring
37	Socket head cap screw
38	Seal lock nut
40	Pin
42	Manufacturing plug
44	Support disc
45	Support disc
46	Shim
47	Shim
48	Shim

This breakdown is for information only. Parts are matched sets and are available only as an exchange hydraulic pump. Only seals may be purchased separately, indicated *.

Pressure Compensator, Type DR

The pressure compensator control gives maximum output flow to the system until the system reaches the pre-adjusted pressure setting of the control. The pressure compensator control then regulates the pump output flow to equal the flow requirements of the system while maintaining the pre-adjusted output pressure. When the system no longer requires flow, the pressure compensator control will cause the pump to destroke so that there is no output flow while maintaining the pre-adjusted pressure.

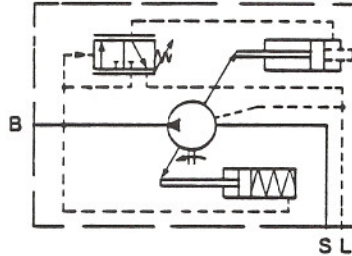
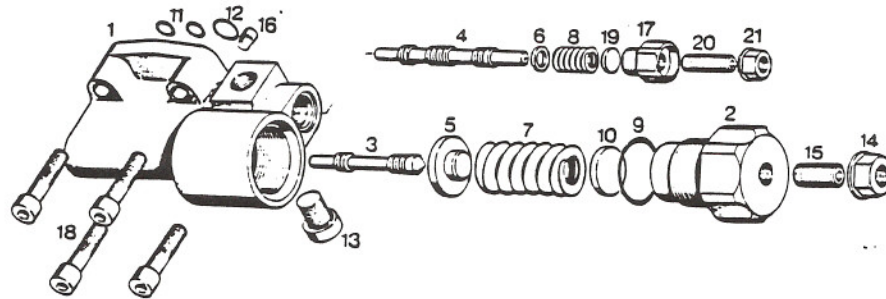


FIG. 2



Item No.	Description
1	Valve housing
2	Plug
3	Piston (DR)
4	Piston (FR)
5	Spring cup
6	Disc
7	Spring
8	Spring
* 9	O-ring
10	Disc
*11	O-ring
*12	O-ring
13	Plug
14	Seal lock nut
15	Threaded pin
16	Plug
17	Threaded plug
18	Socket screw
19	Disc
20	Threaded pin
21	Seal lock nut

This breakdown is for information only. Parts are matched sets and are available only as an exchange hydraulic pump. Only seals may be purchased separately, indicated *.