

REED 3080B-HP CONCRETE PUMP

SECTION 10:

PARTS INFORMATION, WARRANTY & SERVICE

PAGE

1	AXLE & FRAME ASSEMBLY
2	CONTROL PANEL
3	POWER TRAIN ASSEMBLY
4	HYDRAULIC VALVES
5	MAIN HYDRAULIC PUMP
6	HYDRAULIC PUMP - Sauer-Sundstrand Technical Data
7	FLUSHBOX AREA
8	CONCRETE & HYDRAULIC CYLINDERS
9	SWING TUBE ASSEMBLY OUTLET HOPPER
10	HYDRAULIC CYLINDERS / SWING TUBE
11	REAR HYDRAULIC TANK
12	REMIXER
13	AUGER ASSEMBLY

SUNDSTRAND - SERIES 90 PUMP

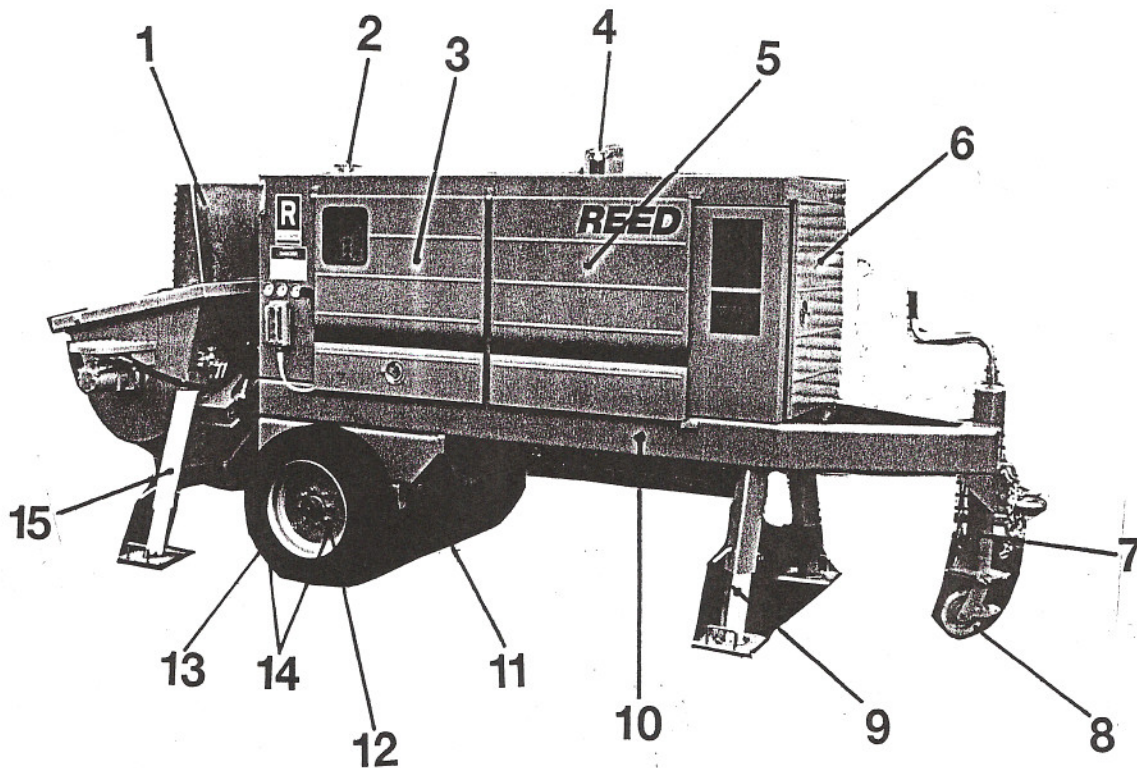
SERIES 90 PUMPS & MOTORS - CONFIGURATION

- ★ THE SERIES 90 PUMPS AND MOTORS PROVIDE AN INFINITELY VARIABLE SPEED RANGE BETWEEN ZERO AND MAXIMUM IN BOTH FORWARD AND REVERSE MODES OF OPERATIONS.
- ★ THE SERIES 90 VARIABLE DISPLACEMENT PUMP IS A COMPACT, HIGH POWER DENSITY UNIT WITH ADVANCED DESIGN, USING THE PARALLEL AXIAL PISTON/SLIPPER CONCEPT IN CONJUNCTION WITH A TILTABLE CRADLE SWASHPLATE TO VARY THE PUMPS DISPLACEMENT. REVERSING THE ANGLE OF THE SWASHPLATE REVERSES THE FLOW OF OIL FROM THE PUMP AND THUS REVERSES THE DIRECTION OF ROTATION OF THE MOTOR OUTPUT.
- ★ THE VARIABLE DISPLACEMENT PUMPS ARE CONTROLLED BY A COMPACT RESPONSIVE CLOSED LOOP SERVO CONTROL WITH AN ELECTRICAL INPUT.
- ★ THESE PUMPS CONTAIN TWO (2) PATENTED, MULTI-FUNCTION VALVE CARTRIDGES WHICH PROVIDE THE CHECK, PRESSURE LIMITING, HIGH PRESSURE RELIEF AND BYPASS FUNCTIONS.

TECHNICAL DATA - SERIES 90 PUMPS & MOTORS

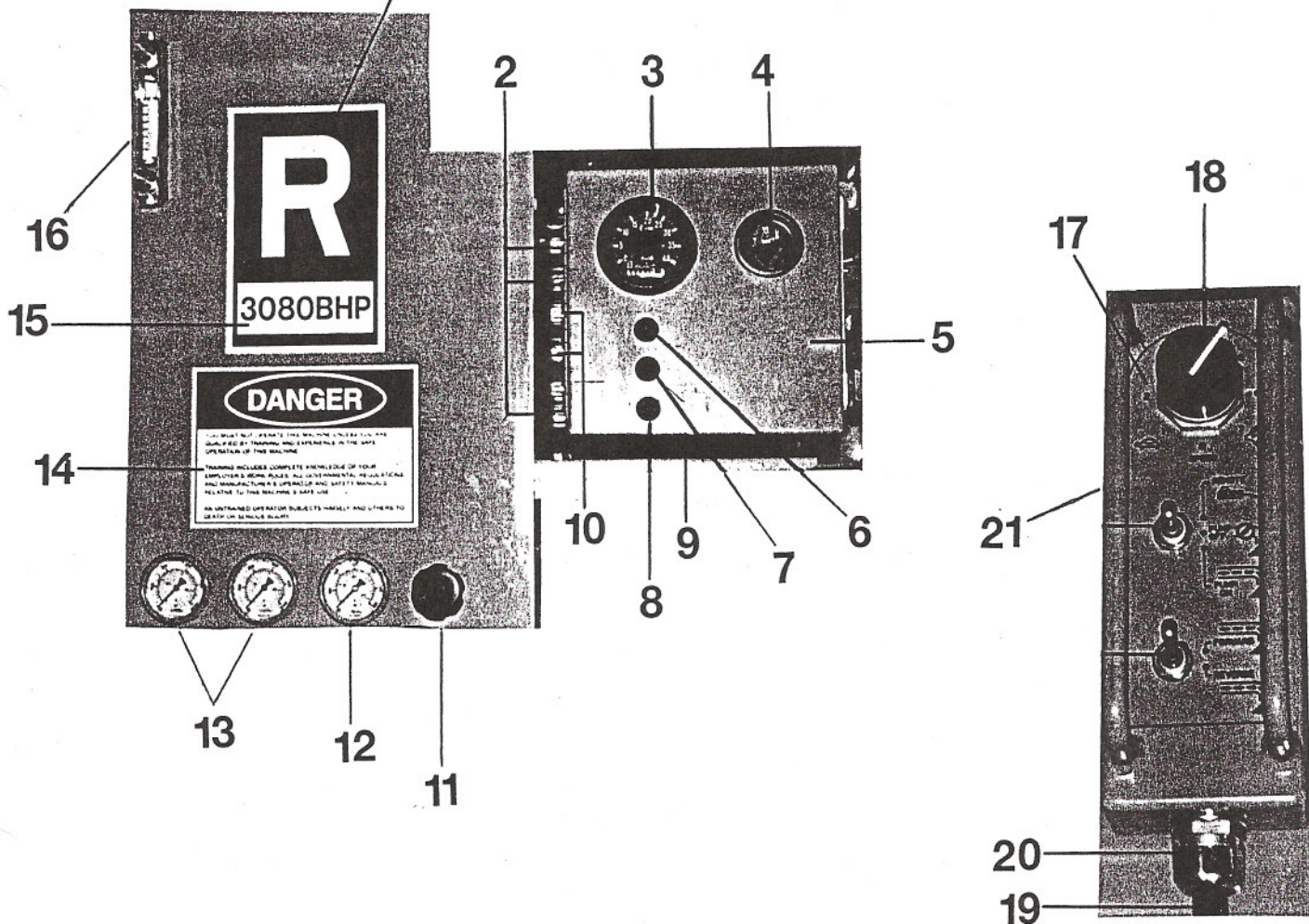
Temperature at hottest point in transmission (normally at case drain)		
Maximum	°F	240
	°C	152
Continuous	°F	220
	°C	104
Fluid viscosity limits - SUS (CST)		
Optimum		70 (13)
Minimum Continuous		47 (6.4)
Minimum Intermittent		42 (5.0)
Maximum Continuous		500 (110)
Maximum Cold Start		7500 (1600)
Fluid Contamination Levels - ISO Code		
Recommended Limit - Continuous Operation		18/13
Limit for Machine Assembly (at roll off)		21/15

FRAME



<u>ITEM</u>	<u>DESCRIPTION</u>	<u>PART#</u>	<u>QTY/MCH</u>
1	SPLASH GUARD	72944	1
2	FILLER CAP	74508	1
3	SIDE DOOR - OPERATORS SIDE WITH VISION PANEL	73516	1
4	RAIN CAP 3"	73475	1
5	SIDE DOOR - FRONT SECTION	73519	2
6	FRONT DOOR	73510	1
7	TOP WIND JACK WITH CASTER	77327	1
8	CASTER	77279	1
9	FRONT OUTRIGGER	75252	2
10	FRAME WELDMENT	77263	1
11	AXLE	77349	1
12	RIMS	73853	2
13	TIRES	73854	2
14	RIM AND TIRE ASSEMBLY	73855	2
15	REAR OUTRIGGER	75252	2

CONTROL PANEL 1



ITEM DESCRIPTION

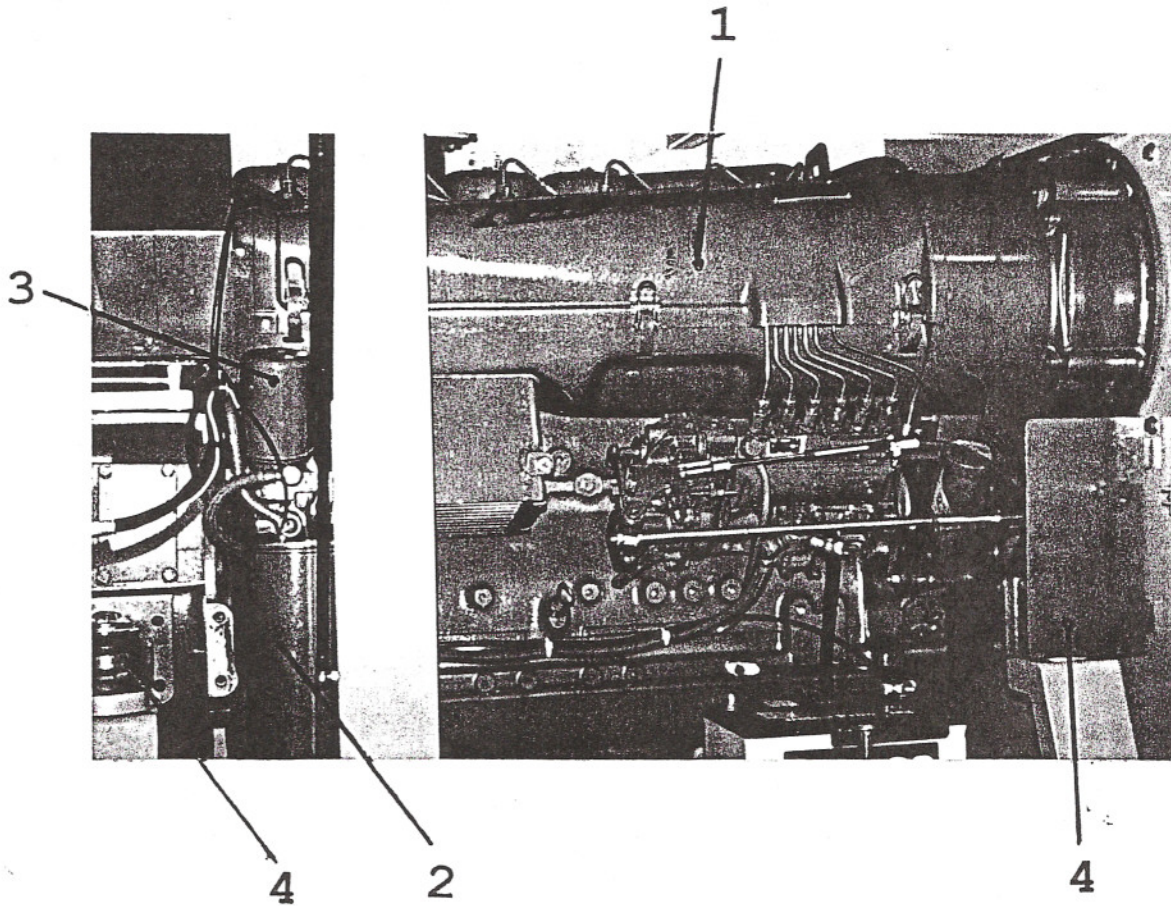
ITEM	DESCRIPTION
1	DECAL
2	STRAIN RELIEF
3	TACHMOMETER
4	TEMPERATURE GAUGE
5	WIRING BOX
6	INDICATOR LIGHT (AMBER)
7	INDICATOR LIGHT (GREEN)
8	INDICATOR LIGHT (RED)
9	STRAIN RELIEF
10	STRAIN RELIEF
11	THROTTLE CABLE
12	3000 PSI GAUGE
13	5000 PSI GAUGE
14	DECAL (DANGER)
15	DECAL (3080B-HP)
16	SIGHT GAUGE
17	DECAL - REMOTE CONTROL
18	POTENTIOMETER
19	REMOTE CONTROL
20	REMOTE CONNECTOR
21	REMOTE CONTROL BOX

PART#

QTY/MCH

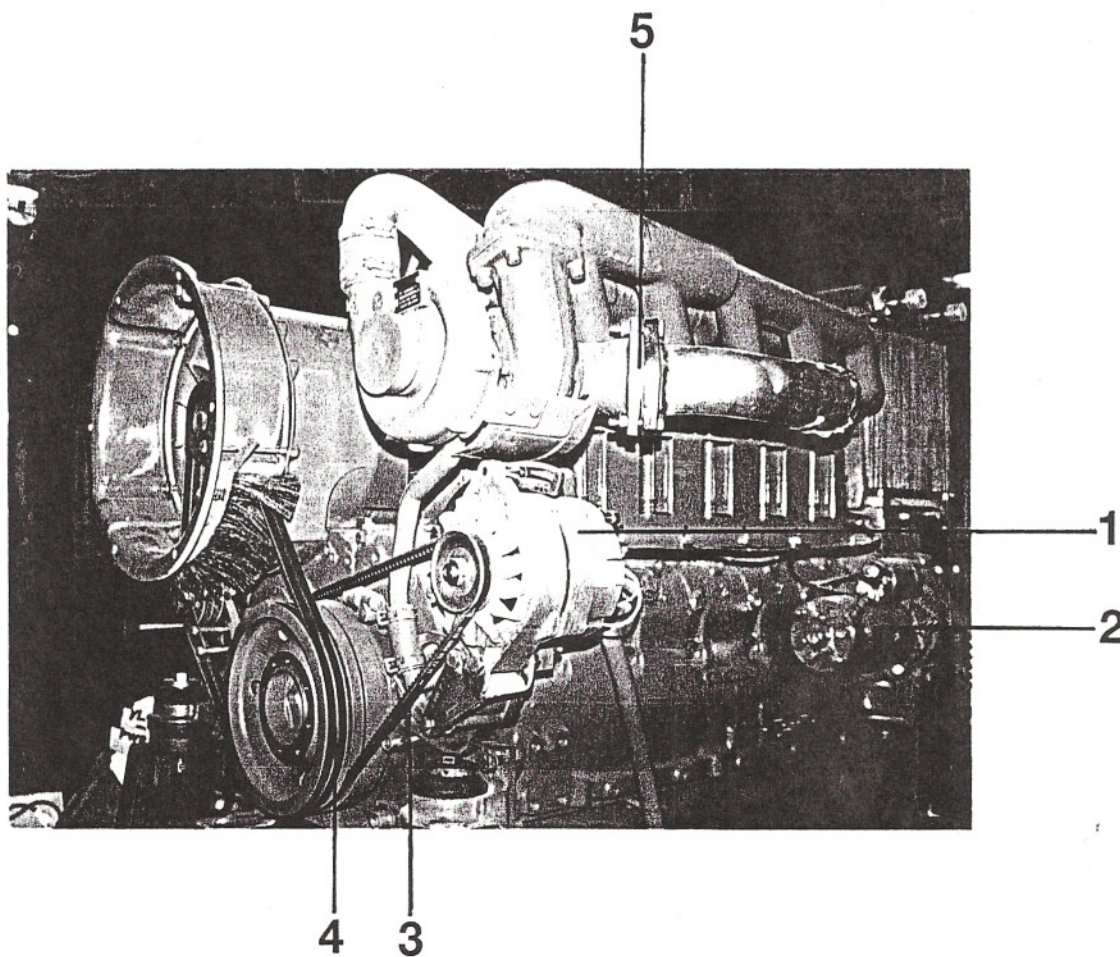
75026	1
10523	3
71119	1
72864	1
73761	1
73777	1
73776	1
73775	1
10522	1
10522	2
73313	1
70366	1
74562	2
75081	1
77311	1
74509	1
73665	1
72966	1
77306	1
77307	1
73660	1

POWER TRAIN ASSEMBLY



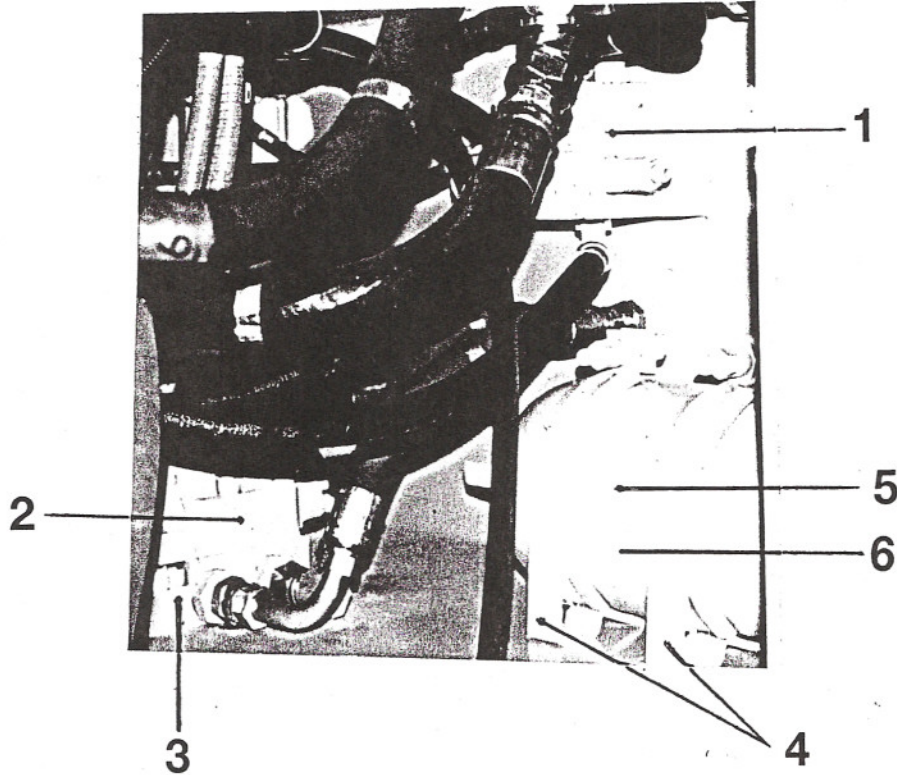
<u>ITEM</u>	<u>DESCRIPTION</u>	<u>PART#</u>	<u>QTY/MCH</u>
1	ENGINE	75121	1
2	OIL FILTER	75343	1
3	FUEL FILTER	74501	1
4	MOTOR MOUNT (FLEX) (2 NOT SHOWN IN PHOTO)	73735	4

POWER TRAIN ASSEMBLY



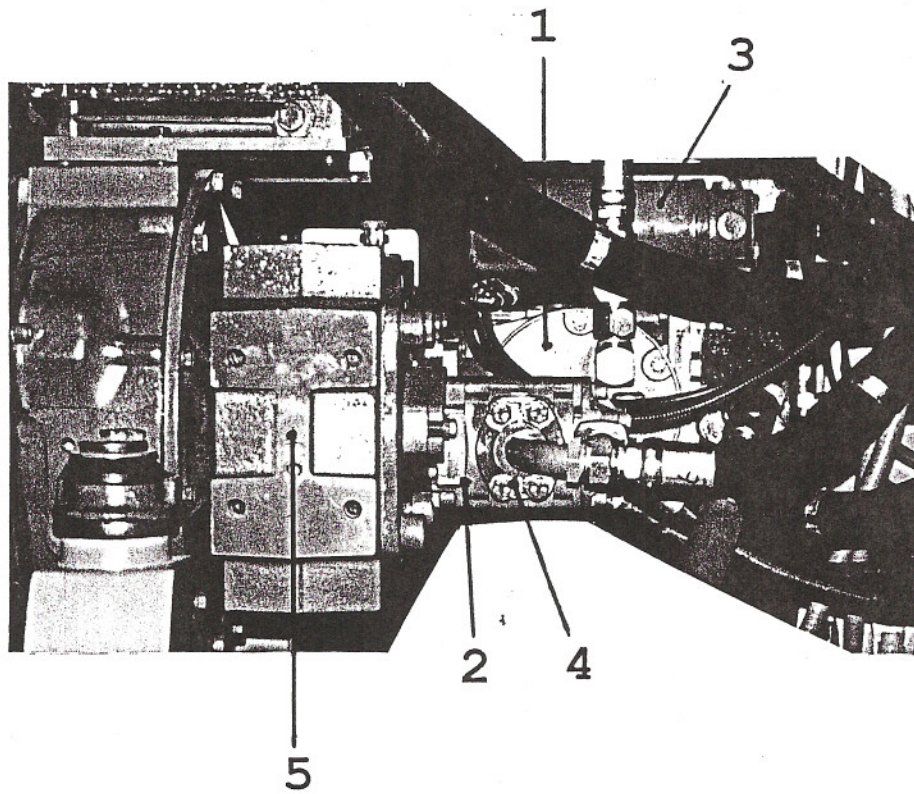
<u>ITEM</u>	<u>DESCRIPTION</u>	<u>PART#</u>	<u>OIY/MCH</u>
1	ALTERNATOR	77484	1
2	STARTER	77440	1
3	ALTERNATOR BELT	77527	1
4	FAN BELT FOR COOLER	77526	2
5	EXHAUST SEAL	77310	1

HYDRAULIC VALVES



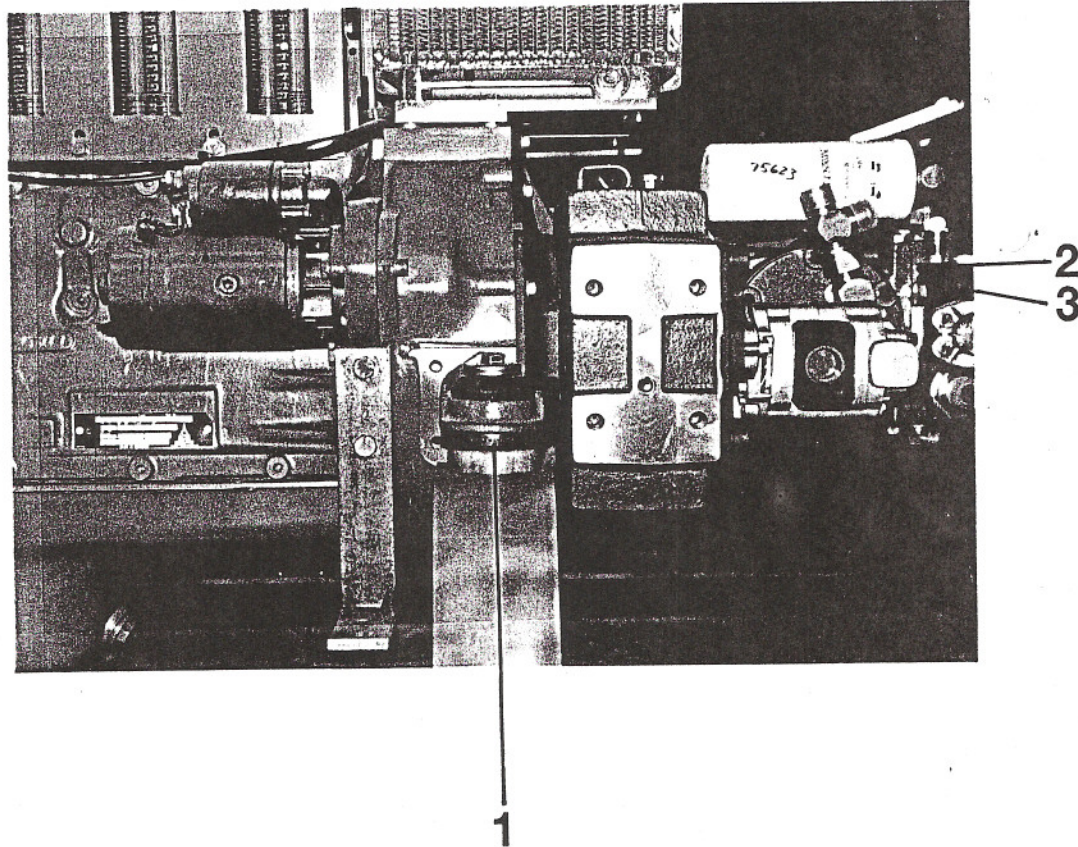
<u>ITEM</u>	<u>DESCRIPTION</u>	<u>PART#</u>	<u>QTY/MCH</u>
1	UNLOADER MANIFOLD BLOCK	72803	1
2	DO8 VALVE	74991	1
3	DO8 SUBPLATE	75161	1
4	BRACKETS	73171	2
5	ACCUMULATOR	74515	1
6	ACCUMULATOR BLADDER	74516	1

MAIN HYDRAULIC PUMP AREA



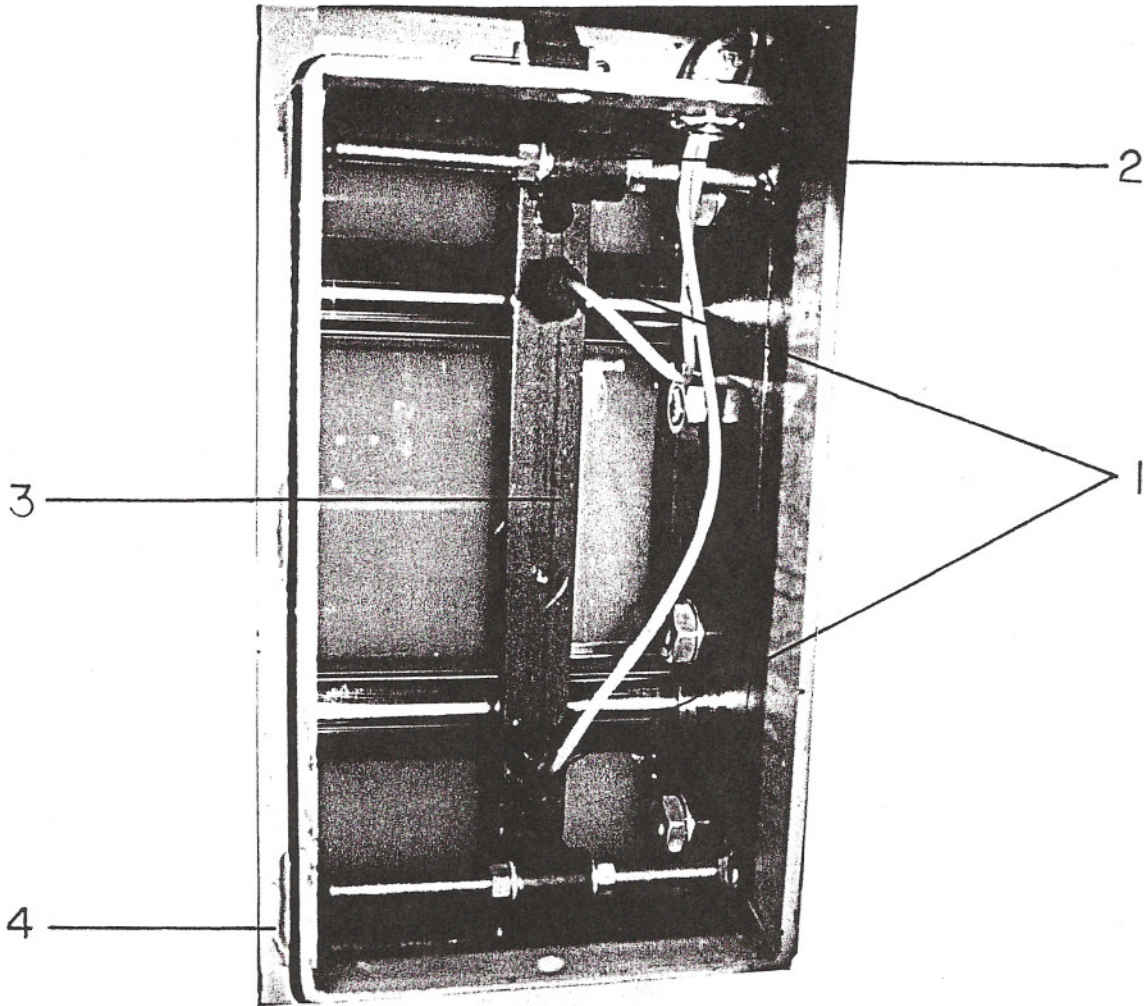
<u>ITEM</u>	<u>DESCRIPTION</u>	<u>PART#</u>	<u>QTY/MCH</u>
1	MAIN HYDRAULIC PUMP	75623	1
2	AUXILIARY PUMP	73246	1
3	FILTER ELEMENT (DONALDSON)	73310	1
4	FLANGE KIT	74752	3
5	GEAR BOX	73697	1

MAIN HYDRAULIC PUMP AREA



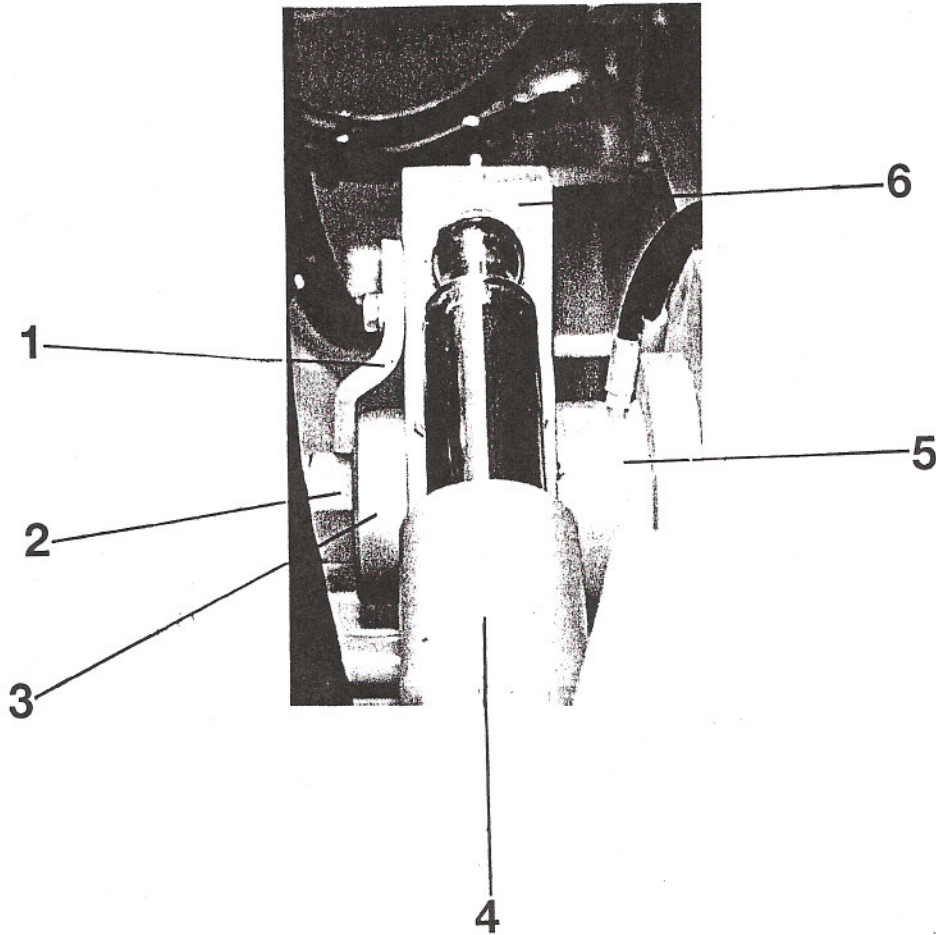
<u>ITEM</u>	<u>DESCRIPTION</u>	<u>PART#</u>	<u>QTY/MCH</u>
1	FLEX MOTOR MOUNT	73735	4
2	HOT OIL SHUTTLE	72980	1
3	HOT OIL SHUTTLE CARTRIDGE	72980	1

WATER BOX AREA



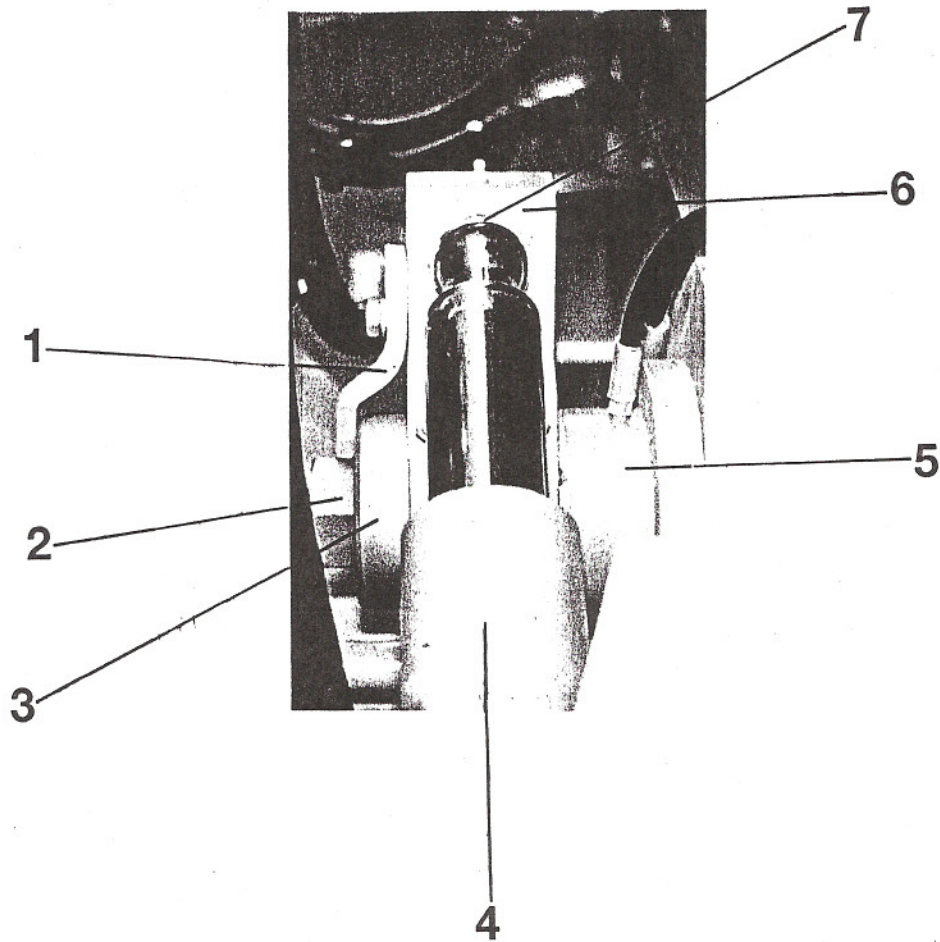
<u>ITEM</u>	<u>DESCRIPTION</u>	<u>PART #</u>	<u>QTY/MCH</u>
1	PROXIMITY SENSOR	72961	2
2	MOUNTING ANGLE	72940	2
3	MOUNTING BAR	75469	1
4	WATER BOX	77262	1

REAR HYDRAULIC TANK



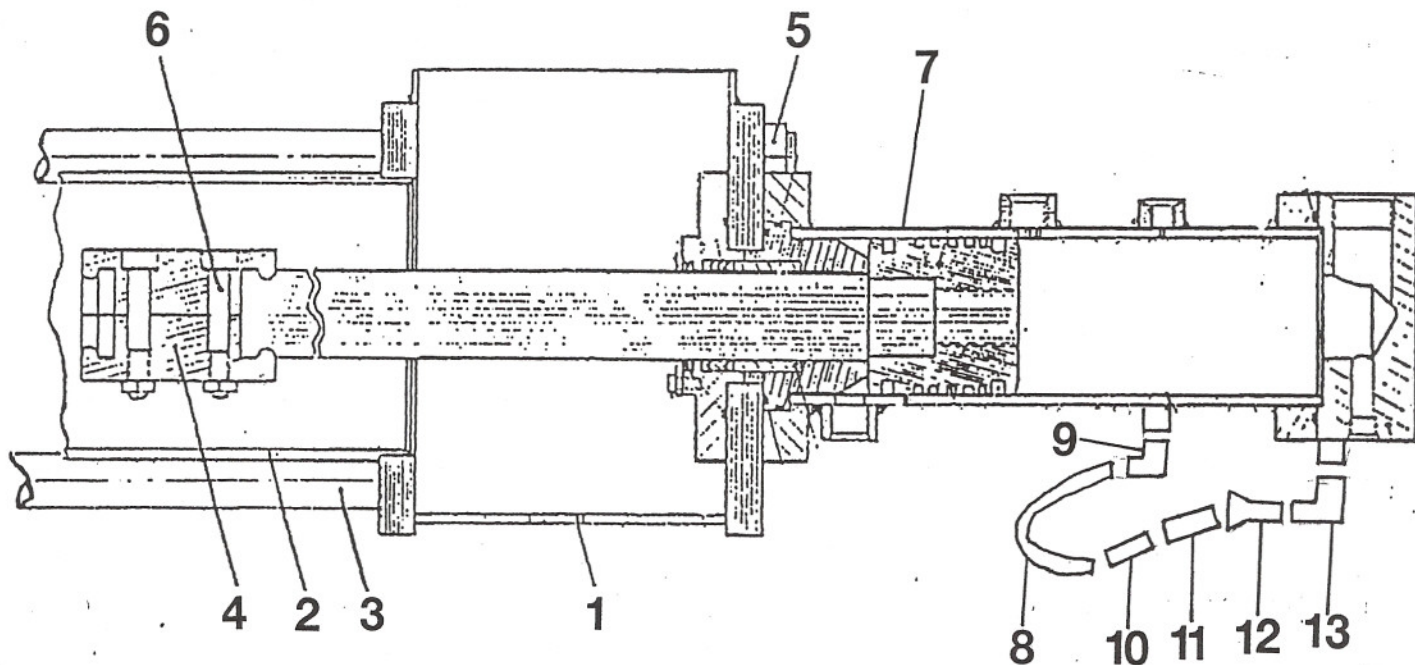
<u>ITEM</u>	<u>DESCRIPTION</u>	<u>PART#</u>	<u>QTY/MCH</u>
1	BOLT RETAINER	77756	1
2	S-TUBE BOLT	78060	1
3	WASHER (S-TUBE SHAFT END)	77706	1
4	SWING RAM	75142	1
5	FLANGE BEARING	75494	1
6	BELL CRANK	75444	1

REAR HYDRAULIC TANK



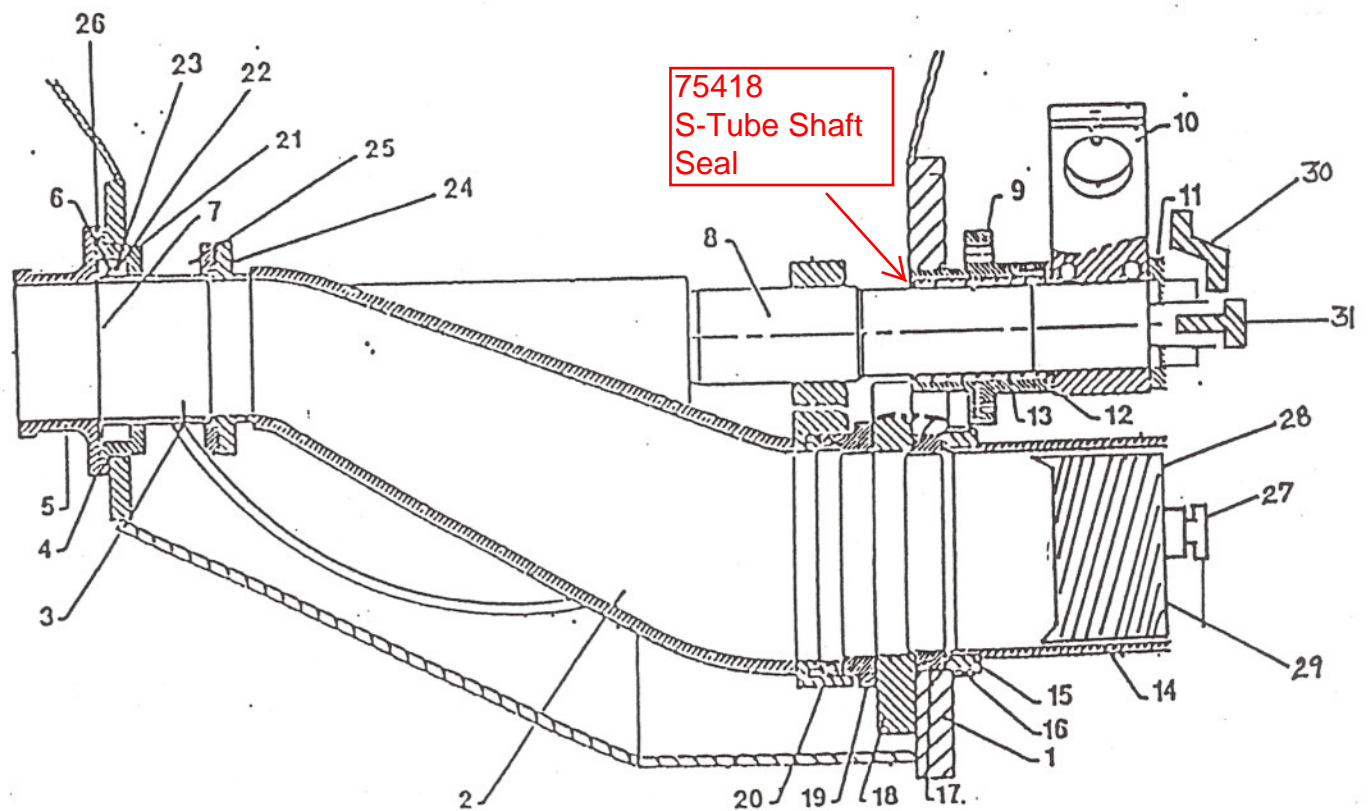
<u>ITEM</u>	<u>DESCRIPTION</u>	<u>PART#</u>	<u>QTY/MCH</u>
1	BOLT RETAINER	77756	1
2	S-TUBE BOLT	78060	1
3	WASHER (S-TUBE SHAFT END)	77706	1
4	SWING RAM	75142	1
5	FLANGE BEARING	75494	1
6	BELL CRANK	75444	1
7	BALL SOCKET	75452	1

CONCRETE & HYDRAULIC CYLINDERS



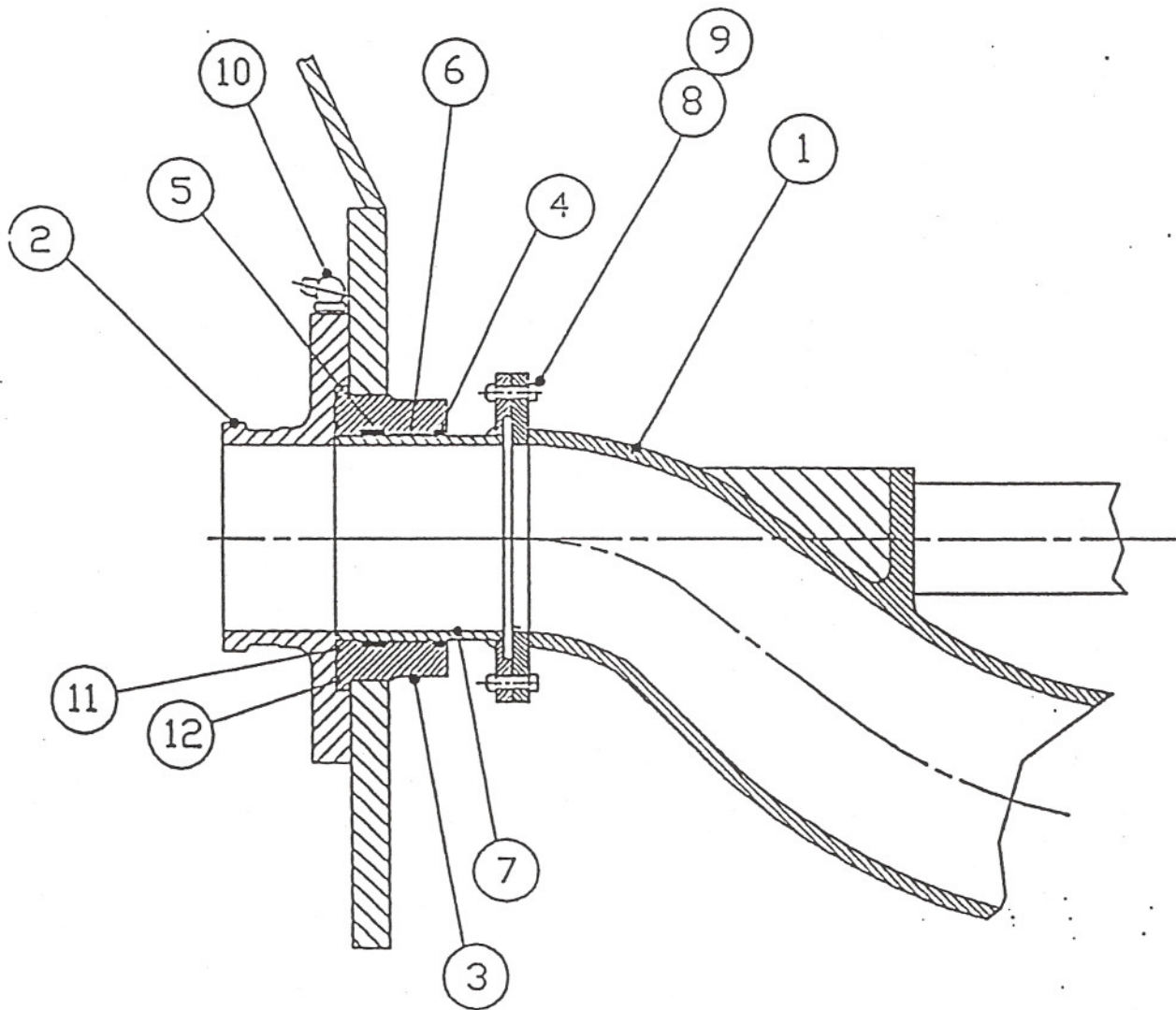
<u>ITEM</u>	<u>DESCRIPTION</u>	<u>PART#</u>	<u>QTY/MCH</u>
1	WATER BOX	77262	1
2	CONCRETE CYLINDER	73720	2
3	TIE ROD CONCRETE CYLINDER	74723	4
4	COUPLING ASSEMBLY MATCHED PAIR	73740	2
5	NUT 1-1/4"-12 (CONCRETE TIE ROD)	N/P/N	4
6	SOCKET HEAD CAP SCREW (1-1/2"-20 X 3")		
7	HYDRAULIC CYLINDER ASSEMBLY - COMPLETE	73422	2
8	HOSE 1/4" X 16 5/8"	74615	1
9	PIPE FLARE ADAPTER M	74781	1
10	ADAPTER M PIPE FLARE	74659	1
11	CHECK VALVE 1/4"	74587	1
12	ADAPTER SWING TUBE M/F	74677	1
13	PIPE FLARE ADAPTER M	74781	1

SWING TUBE ASSEMBLY OUTLET HOPPER



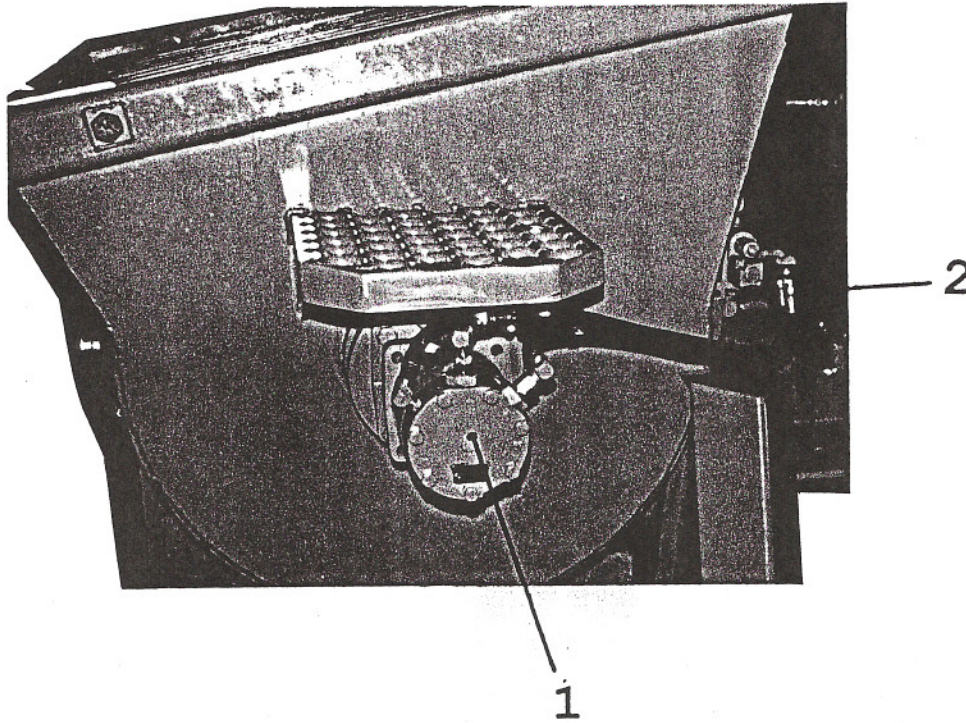
<u>ITEM</u>	<u>DESCRIPTION</u>	<u>PART#</u>	<u>QTY/MCH</u>
1	HOPPER	77268	1
2	SWING TUBE ASSEMBLY	77250	1
3	CHROMED OUTLET	70042	1
4	OUTLET SEAL HOUSING	77760	1
5	OUTLET CASTING 5"	77504	1
6	OUTLET SEAL	77765	1
7	O-RING	74013	1
8	SHAFT SWING TUBE SPLINED	75432	1
9	FLANGE BEARING	75494	1
10	BELL CRANK - SPLINED	75444	1
11	NUT SPACER	77706	1
12	THRUST WASHER	75506	1
13	BRONZE SLEEVE	75496	1
14	CONCRETE CYLINDER	73720	2
15	CONCRETE CYLINDER ADAPTER	75132	2
16	SPACER RING	73821	2
17	ANTI-CHIP RING	75131	2
18	WEAR PLATE	75646	1
19	CUTTING RING 7"	75642	1
20	THRUST RING 7"	73698	1
21	O-RING	75379	1
22	OUTLET SEAL	77764	1
23	GUIDE BAND	77763	1
24	BOLT	N/P/N	6
25	NUT	N/P/N	6
26	1/4-28 GREASE FITTING	N/P/N	1
27	PISTON ADAPTER	73741	1
28	PISTON 180 MM	75644	1
29	180 MM PISTON WITH ADAPTER	75664	1
30	BOLT RETAINER	77756	1
31	BOLT S-TUBE	78060	1

SWING TUBE ASSEMBLY OUTLET



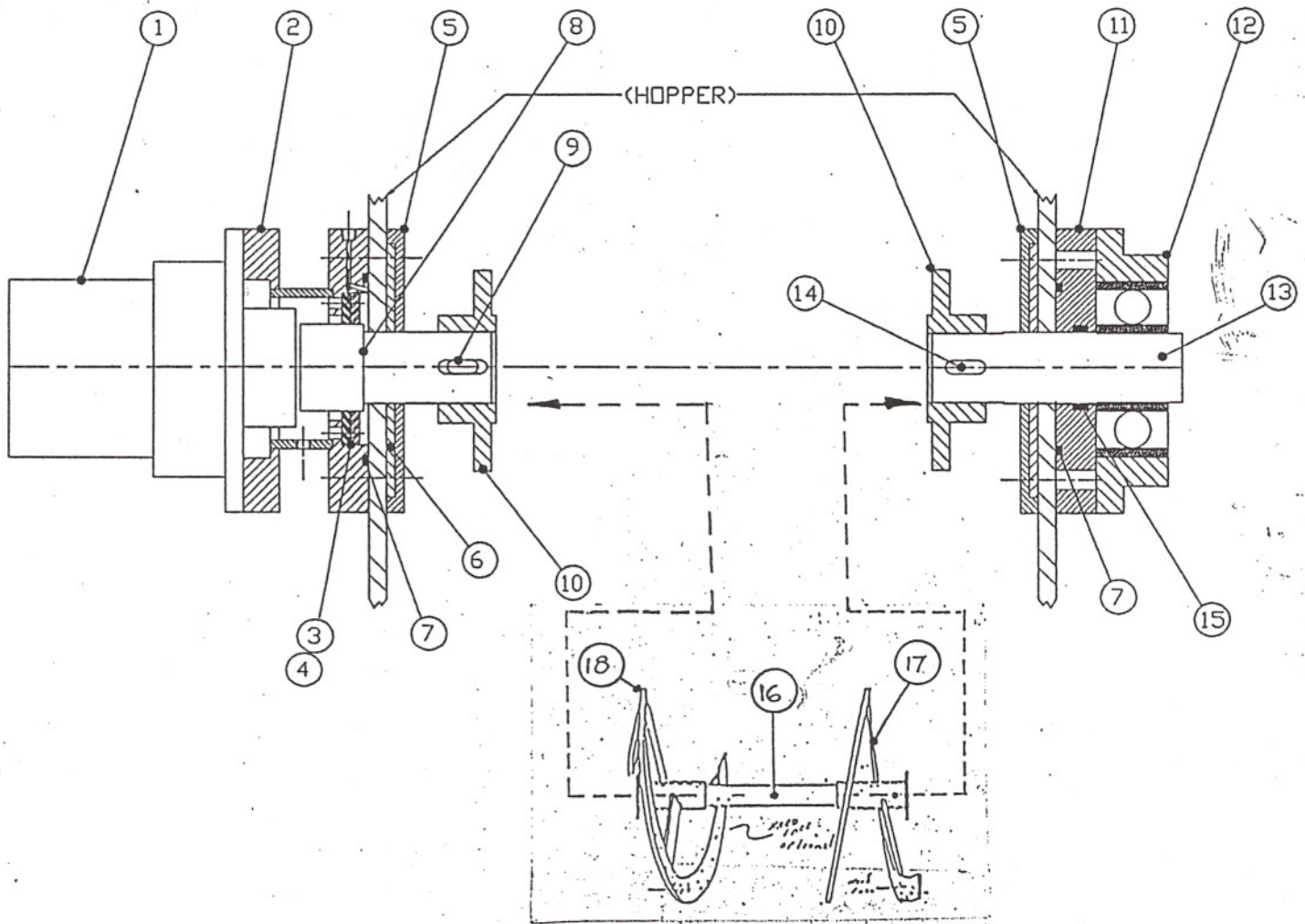
<u>ITEM</u>	<u>DESCRIPTION</u>	<u>PART#</u>	<u>QTY/MCH</u>
1	SWING TUBE ASSEMBLY		
2	OUTER CASTING 5"	77250	1
3	OUTER SEAL HOUSING	77504	1
4	OUTLET SEAL	77760	1
5	OUTLET SEAL	77764	1
6	GUIDE BAND	77765	1
7	CHROMED OUTLET	77763	1
8	BOLT	70042	1
9	NUT	N/P/N	6
10	1/4-28 GREASE FITTING	N/P/N	6
11	O-RING	N/P/N	1
12	O-RING	77762	1
		77761	1

REMIXER



<u>ITEM</u>	<u>DESCRIPTION</u>	<u>PART #</u>	<u>QTY/MCH</u>
1	AUGER MOTOR	73856	1
2	VALVE (REMIX)	74584	1

AUGER ASSEMBLY



ITEM	DESCRIPTION	# PART NO.	QTY./MACH.
1.	AUGER MOTOR	73856	1
2.	REMIX HOUSING WELDMENT	77522	1
3.	SPACER RING	77516	1
4.	SPACER RING GASKET	77517	1
5.	REMIX FLANGE	77515	2
6.	GASKET, REMIX FLANGE	77512	2
7.	O-RING	77521	2
8.	STUB SHAFT	73863	1
9.	KEY, STUB SHAFT	77394	1
10.	COUPLING, HALF MALE	73258	2
11.	REMIX FLANGE	77514	1
12.	AUGER FLANGE II	75193	1
13.	STUB SHAFT	77513	1
14.	KEY, STUB SHAFT (NON-OP/SIDE)	77524	1
15.	LIP SEAL	77519	1
16.	AUGER SHAFT	73260	1
17.	RIBBON AUGER	73861	1
18.	RIBBON AUGER	73860	1