

REED 3050HP CONCRETE PUMP

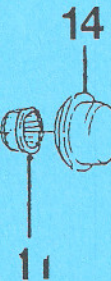
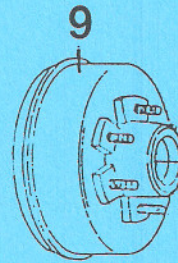
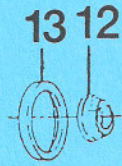
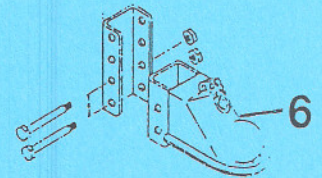
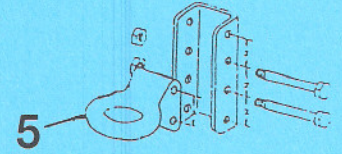
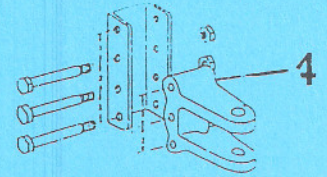
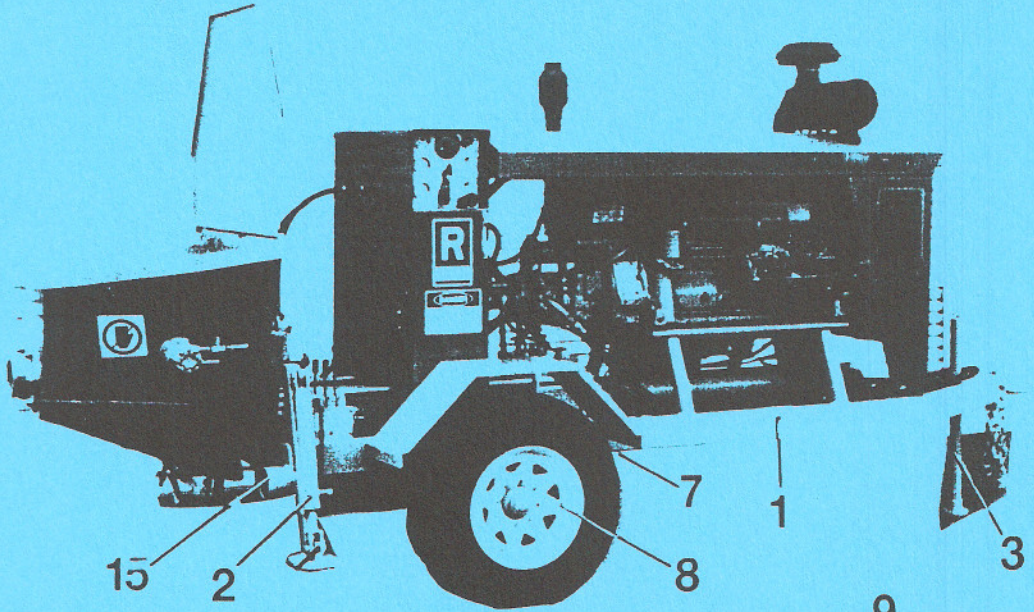
SECTION 10:

PARTS INFORMATION, WARRANTY & SERVICE

PAGE

1	FRAME & AXLE ASSEMBLY
2	CONTROL PANEL
3	POWER TRAIN ASSEMBLY
4	HYDRAULIC VALVES
5	MAIN HYDRAULIC PUMP AREA
6	HYDRAULIC PUMP - Sauer-Sundstrand Technical Data
7	FLUSHBOX AREA
8	CONCRETE & HYDRAULIC CYLINDERS
9	SWING TUBE ASSEMBLY OUTLET HOPPER
10	FRONT ENCLOSURE
11	REAR HYDRAULIC TANK
12	AGITATOR ASSEMBLY

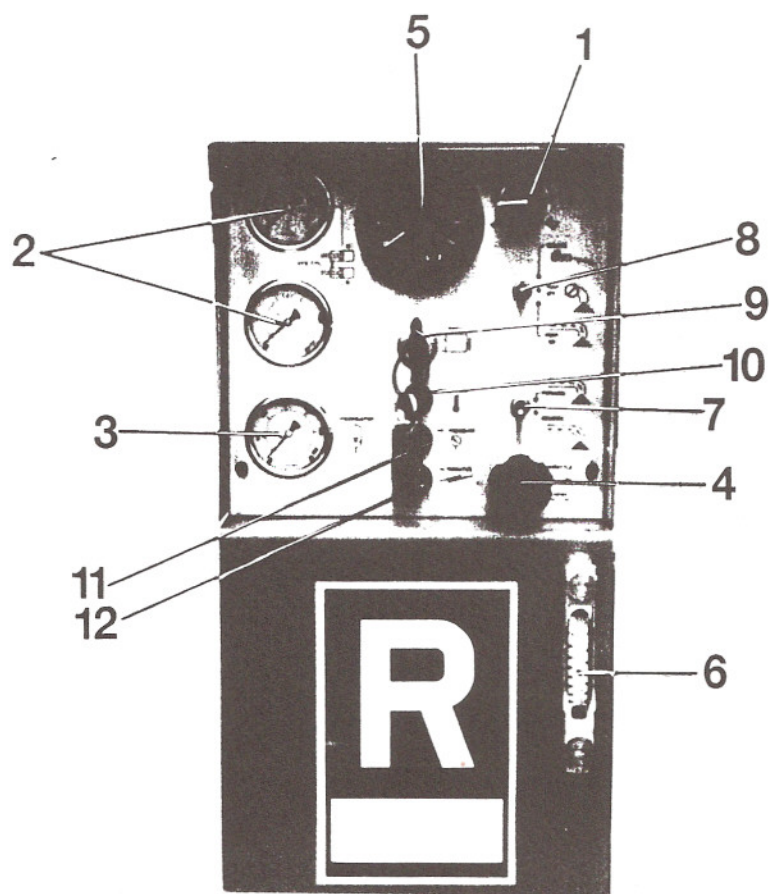
FRAME & AXLE ASSEMBLY



ITEM	DESCRIPTION	PART#	QTY
1	FRAME WELDMENT	73412	1
2	REAR JACK STAND	70018	2
3	TOP WIND JACK	71060	1
4	CLEVIS	71050	1
5	LUNETTE EYE 3"	71051	1
6	COUPLER 2-5/16"	71009	1
7	AXLE	71005	1
8	WHEEL AND TIRE	71066	2
9	BRAKE DRUM	71097	2
10	ELECTRIC BRAKE	71056	2
11	OUTER BEARING	71098	2
12	INNER BEARING	71094	2
13	GREASE SEAL	71095	2
14	DUST CUP	71199	2
15	TAIL LIGHT	30258	2

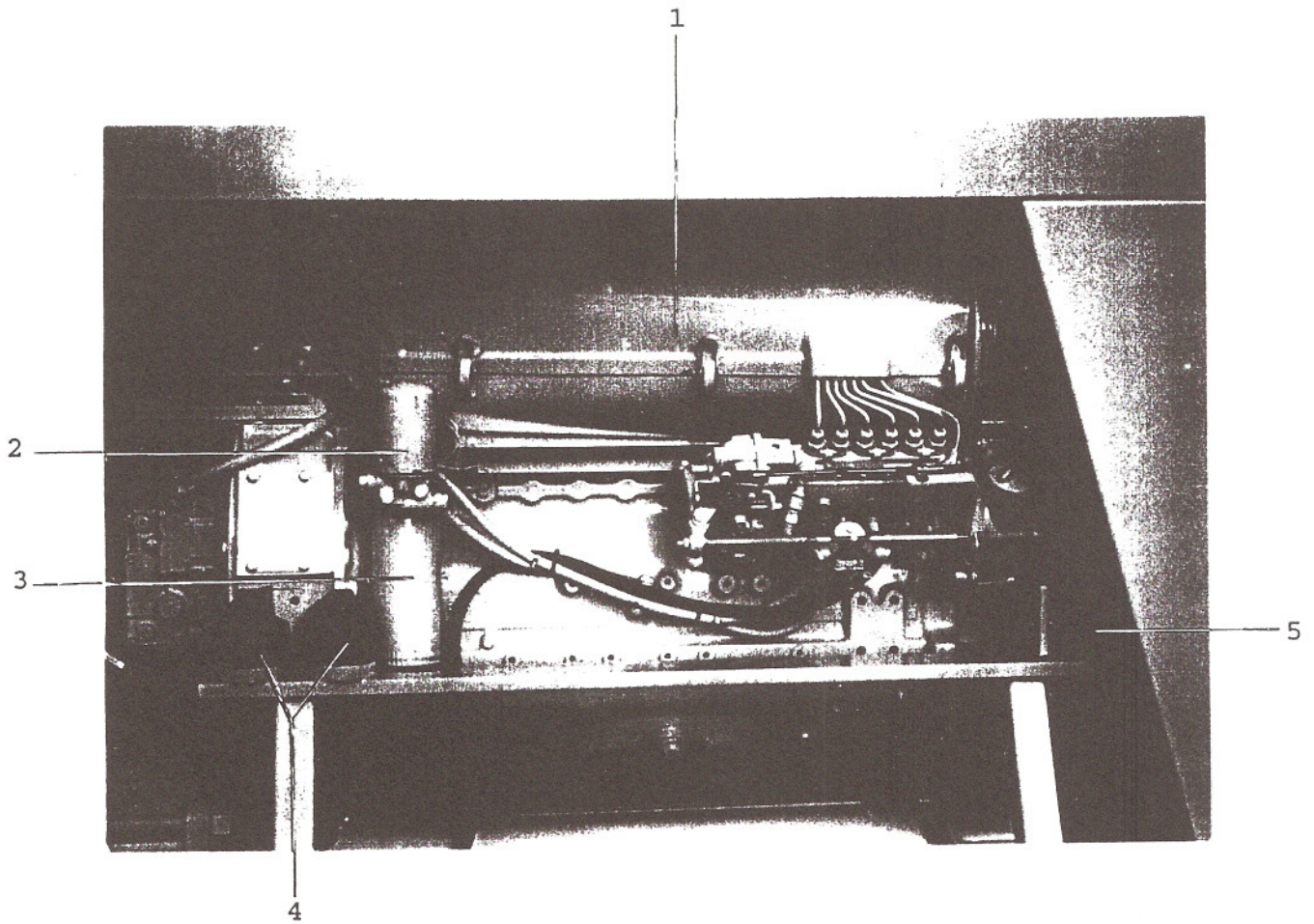
3050HP & 3050HPS

CONTROL PANEL



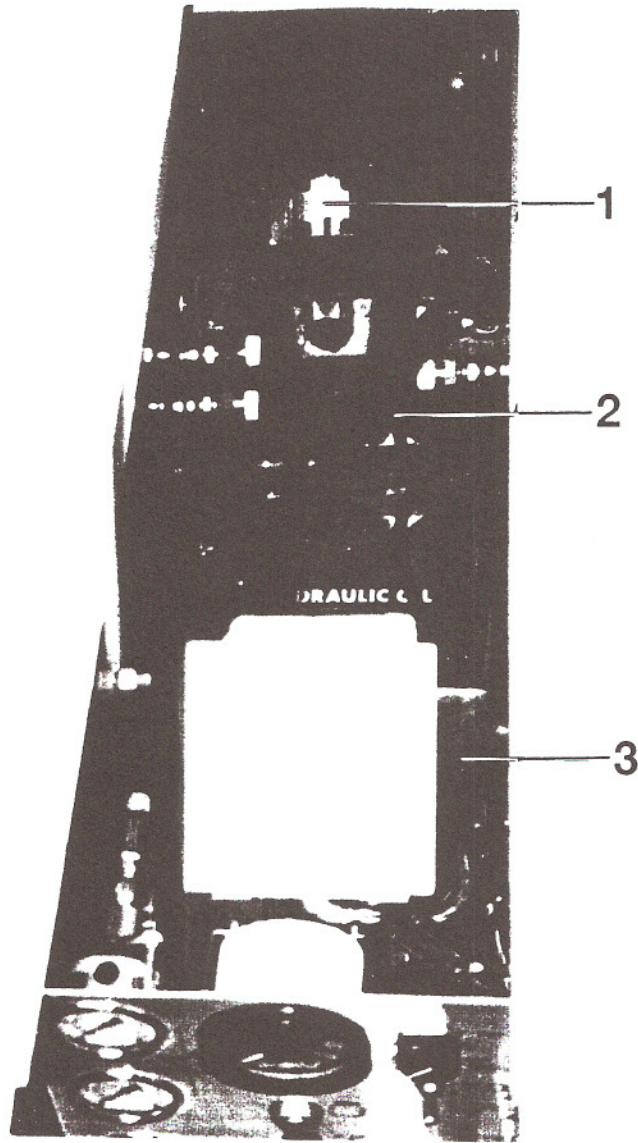
<u>ITEM</u>	<u>DESCRIPTION</u>	<u>PART#</u>	<u>QTY</u>
1	POTENTIOMETER	77642	1
2	0-5000 PSI GAUGE	74562	2
3	0-3000 PSI GAUGE	70366	1
4	THROTTLE CABLE	73313	1
5	TACHOMETER	71119	1
6	SIGHT GAUGE	74509	1
7	SWITCH ON/OFF	72963	1
8	SWITCH ON/OFF/ON	72965	1
9	IGNITION SWITCH	71154	1
10	RED LIGHT	73775	1
11	GREEN LIGHT	73776	1
12	AMBER LIGHT	73777	1

POWER TRAIN ASSEMBLY



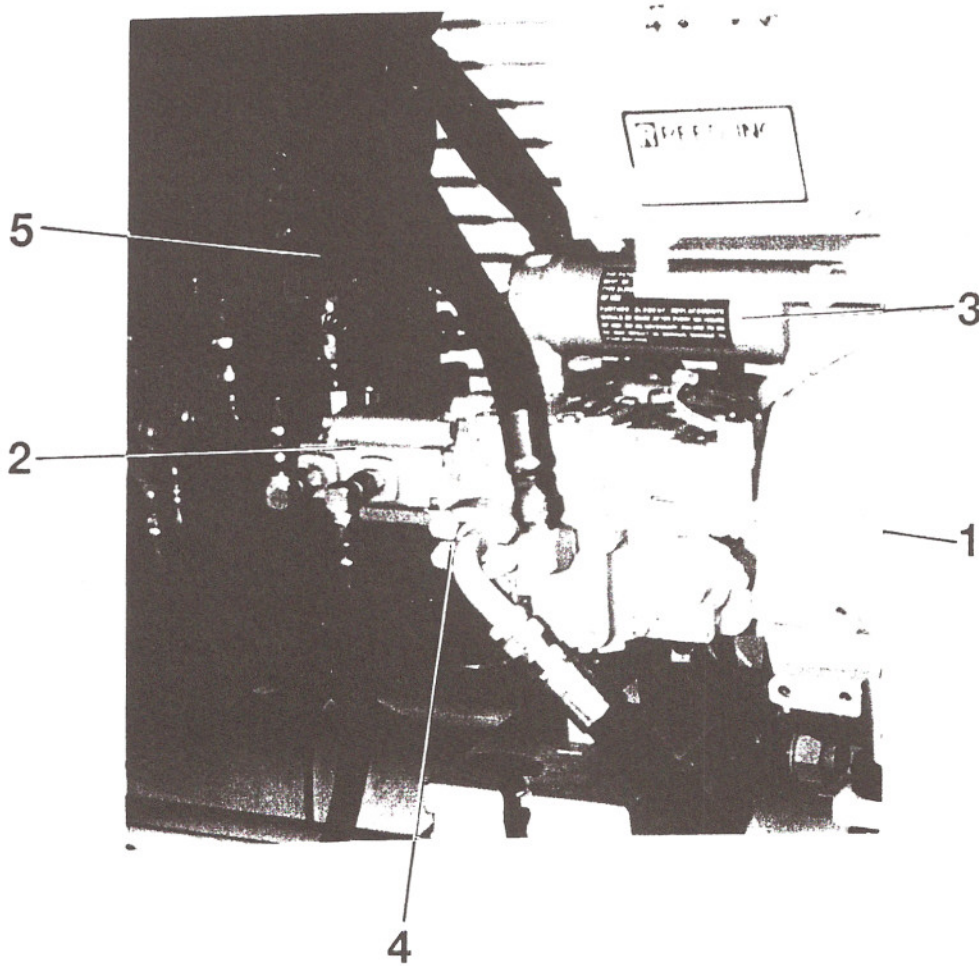
<u>ITEM</u>	<u>DESCRIPTION</u>	<u>PART#</u>	<u>QTY</u>
1	ENGINE	71150	1
2	FUEL FILTER	74501	1
3	OIL FILTER	75343	1
4	FRONT ENGINE MOUNT	N/P/N	2
5	REAR ENGINE MOUNT	N/P/N	4

HYDRAULIC VALVES



<u>ITEM</u>	<u>DESCRIPTION</u>	<u>PART#</u>	<u>QTY</u>
1	DO8 SWING VALVE	74991	1
2	SUBPLATE	75161	1
3	BLACK BOX	70752	1

MAIN HYDRAULIC PUMP AREA



<u>ITEM</u>	<u>DESCRIPTION</u>	<u>PART#</u>	<u>QTY</u>
1	MAIN HYDRAULIC PUMP	75149	1
2	AUXILIARY PUMP	73156	1
3	FILTER ELEMENT (DONALDSON)	73310	1
4	FLANGE KIT	74752	3
5	UNLOADER MANIFOLD	72803	1

SUNDSTRAND - SERIES 90 PUMP

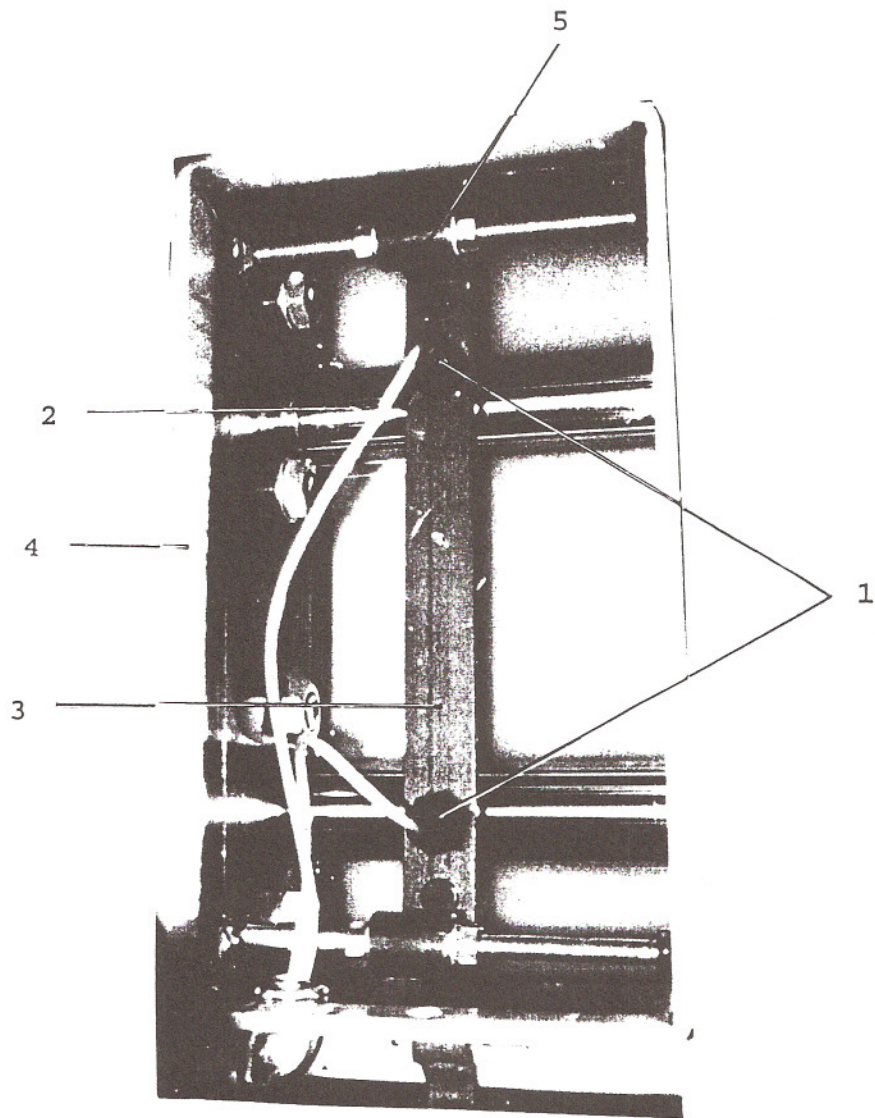
SERIES 90 PUMPS & MOTORS - CONFIGURATION

- ★ THE SERIES 90 PUMPS AND MOTORS PROVIDE AN INFINITELY VARIABLE SPEED RANGE BETWEEN ZERO AND MAXIMUM IN BOTH FORWARD AND REVERSE MODES OF OPERATIONS.
- ★ THE SERIES 90 VARIABLE DISPLACEMENT PUMP IS A COMPACT, HIGH POWER DENSITY UNIT WITH ADVANCED DESIGN, USING THE PARALLEL AXIAL PISTON/SLIPPER CONCEPT IN CONJUNCTION WITH A TILTABLE CRADLE SWASHPLATE TO VARY THE PUMPS DISPLACEMENT. REVERSING THE ANGLE OF THE SWASHPLATE REVERSES THE FLOW OF OIL FROM THE PUMP AND THUS REVERSES THE DIRECTION OF ROTATION OF THE MOTOR OUTPUT.
- ★ THE VARIABLE DISPLACEMENT PUMPS ARE CONTROLLED BY A COMPACT RESPONSIVE CLOSED LOOP SERVO CONTROL WITH AN ELECTRICAL INPUT.
- ★ THESE PUMPS CONTAIN TWO (2) PATENTED, MULTI-FUNCTION VALVE CARTRIDGES WHICH PROVIDE THE CHECK, PRESSURE LIMITING, HIGH PRESSURE RELIEF AND BYPASS FUNCTIONS.

TECHNICAL DATA - SERIES 90 PUMPS & MOTORS

Temperature at hottest point in transmission (normally at case drain)		
Maximum	°F	240
	°C	152
Continuous	°F	220
	°C	104
Fluid viscosity limits - SUS (CST)		
Optimum		70 (13)
Minimum Continuous		47 (6.4)
Minimum Intermittent		42 (5.0)
Maximum Continuous		500 (110)
Maximum Cold Start		7500 (1600)
Fluid Contamination Levels - ISO Code		
Recommended Limit - Continuous Operation		18/13
Limit for Machine Assembly (at roll off)		21/15

FLUSHBOX AREA



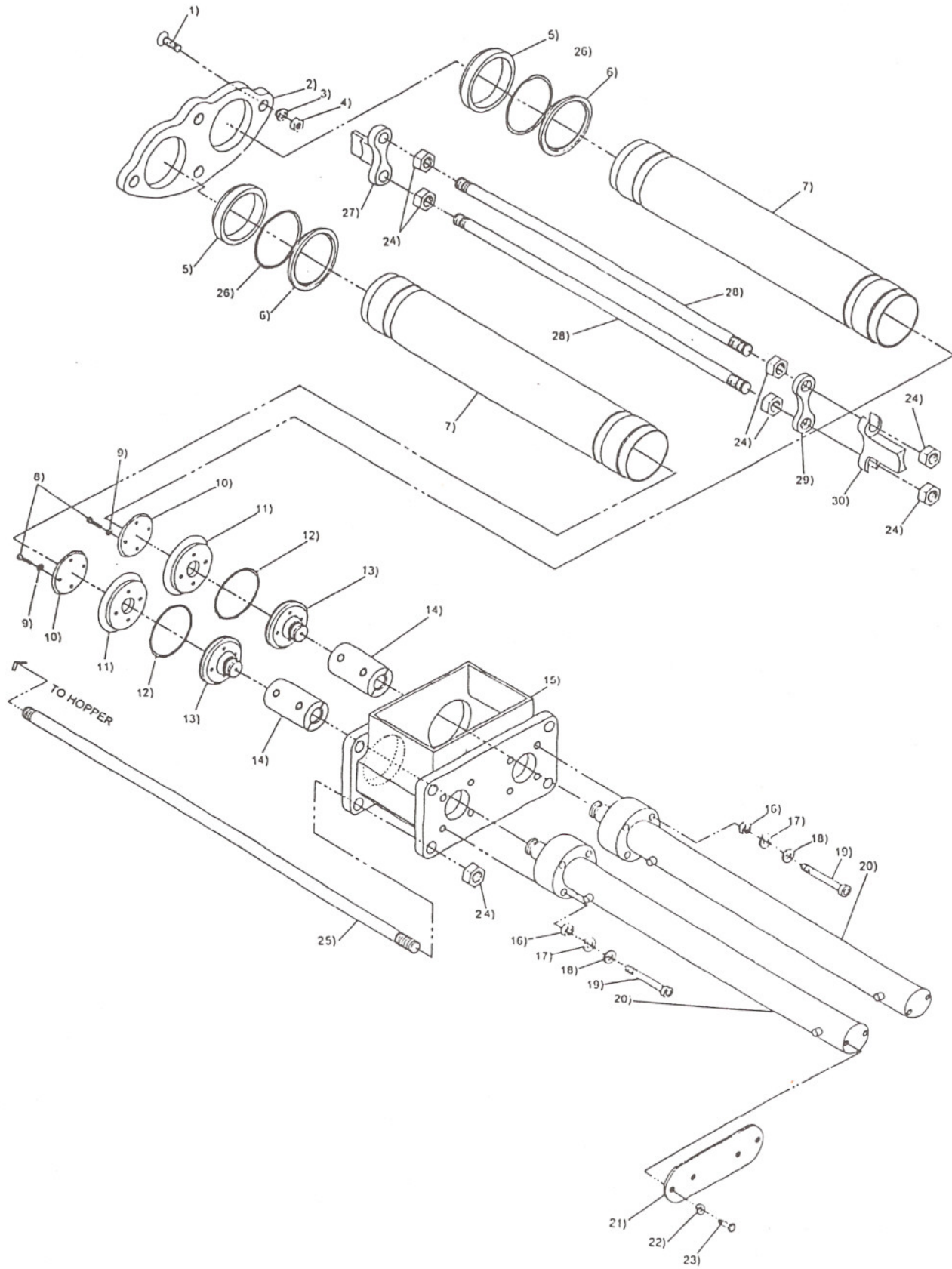
<u>ITEM</u>	<u>DESCRIPTION</u>	<u>PART#</u>	<u>QTY</u>
1	PROXIMITY SENSOR	77998	2
2	SENSOR CABLE	77990	2
3	MOUNTING BAR	72941	1
4	FLUSHBOX	73498	1
5	MOUNTING ANGLE	72940	2

CONCRETE & HYDRAULIC CYLINDERS FOR 3050HP

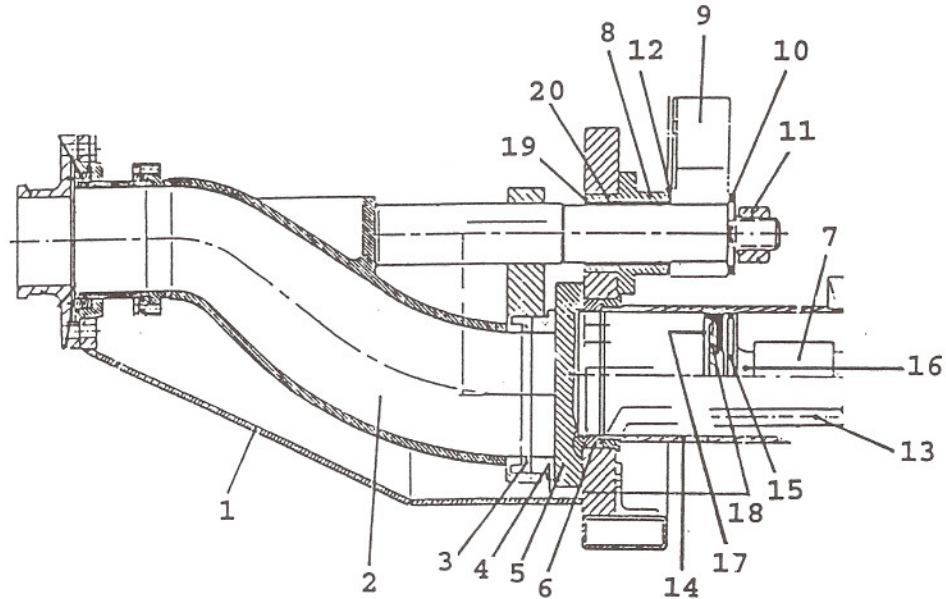
- 1) N/P/N - 3/4" X 3" BOLT, QTY 4
- 2) 77852 - WEARPLATE, QTY 1
- 3) N/P/N - 3/4" LOCKWASHER, QTY 4
- 4) N/P/N - 3/4" COARSE NUT, QTY 4
- 5) 70047 - ANTI-CHIP RING, QTY 2
- 6) 73403 - CONCRETE CYLINDER ADAPTERS, QTY 2
- 7) 73428 - CONCRETE CYLINDER (NEW STYLE), QTY 2
- 8) N/P/N - 3/8" X 1 1/2" FINE BOLT, QTY 8
- 9) N/P/N - 3/8" INTERNAL LOCKWASHER, QTY 8
- 10) 70057 - PISTON PLATE, QTY 2
- 11) 70048 - PISTON CUP, QTY 2
- 12) 74001 - O-RING, QTY 2
- 13) 70076 - CONCRETE PISTON ADAPTER, QTY 2
- 14) 73425 - PISTON COUPLER, QTY 2
- 15) 73498 - FLUSH BOX WELDMENT, QTY 1
- 16) N/P/N - 3/4" COARSE NUT, QTY 8
- 17) N/P/N - 3/4" LOCKWASHER, QTY 8
- 18) 77396 - 3/4" SEALING WASHER, QTY 8
- 19) N/P/N - 3/4" X 6" COARSE SOCKET HEAD CAP SCREW, QTY 8
- 20) 70984 - HYDRAULIC CYLINDER, QTY 2
- 21) 73802 - END PLATE, QTY 1
- 22) N/P/N - 1/2" LOCKWASHER, QTY 4
- 23) N/P/N - 1/2" X 1" COARSE BOLT, QTY 4
- 24) N/P/N - 1 1/4" FINE NUT, QTY 4
- 25) 73463 - TIE ROD, QTY 4
- 26) 73409 - O-RING, QTY 2
- 27) 73491 - TIE ROD BRACKET, QTY 1
- 28) 73459 - TIE ROD, QTY 2
- 29) 73489 - SPACER PLATE, QTY 1
- 30) 73490 - TIE ROD BRACKET, QTY 1

- INSIDE FLUSH BOX

CONCRETE & HYDRAULIC CYLINDERS FOR 3050HP

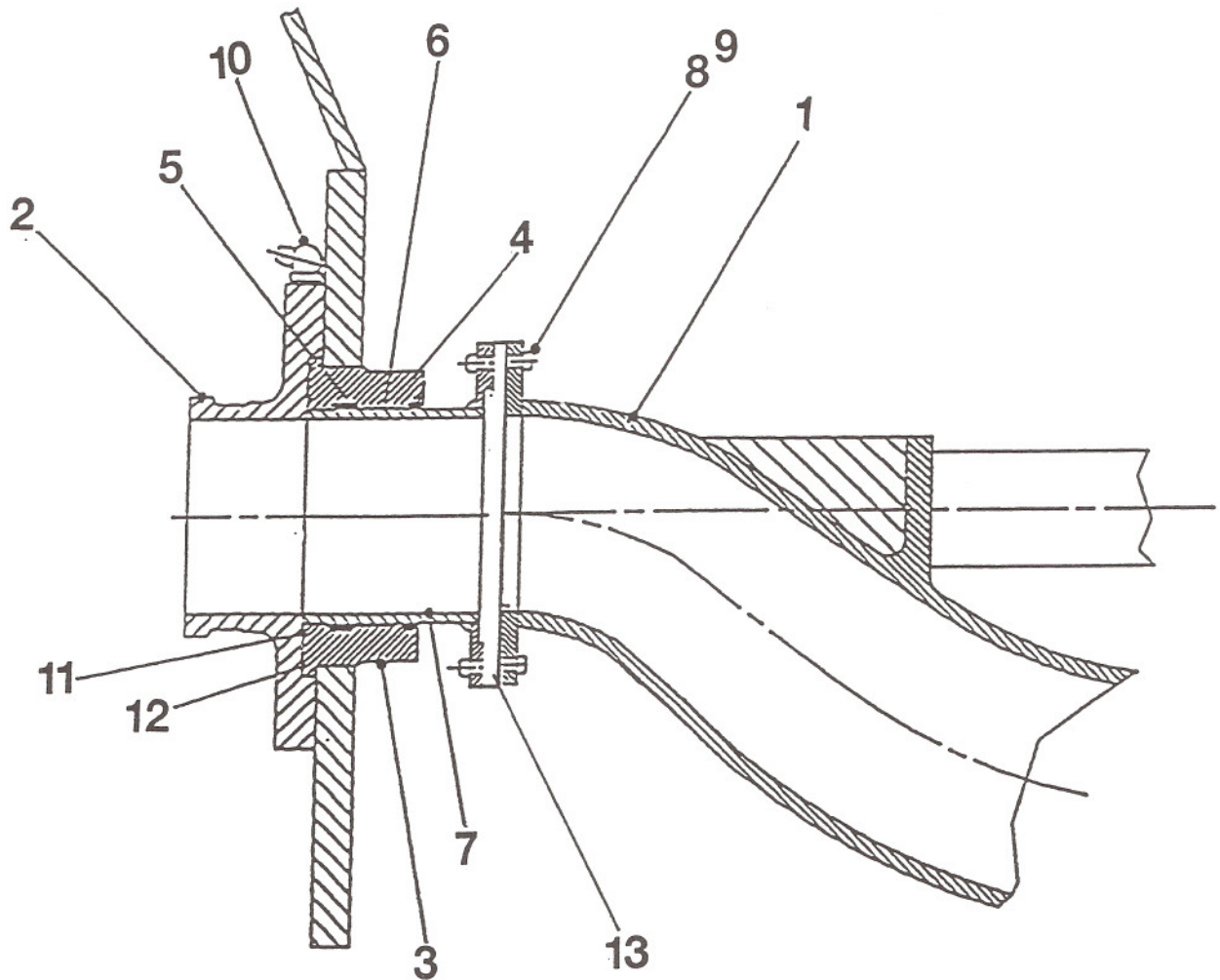


SWING TUBE ASSEMBLY OUTLET HOPPER



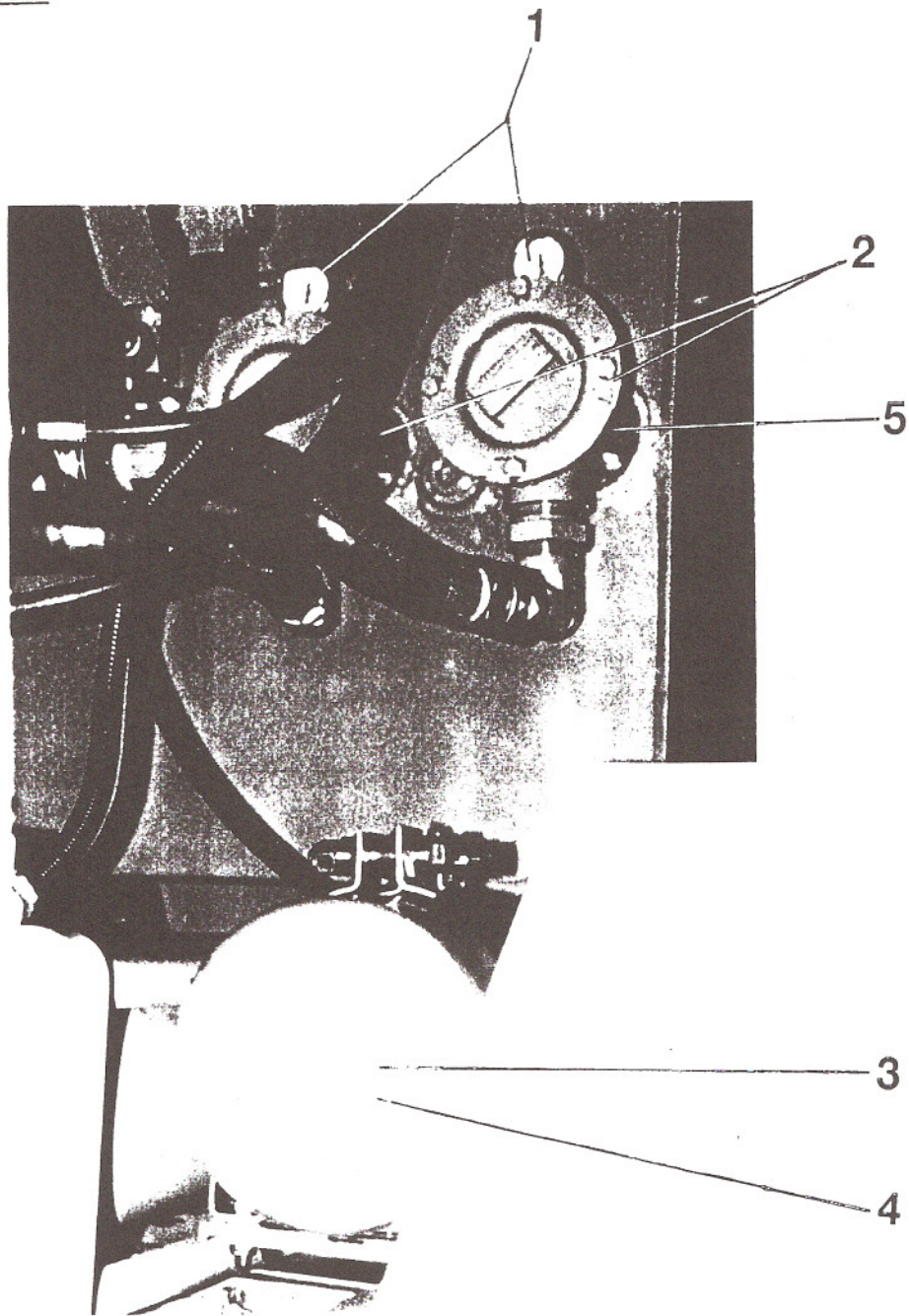
<u>ITEM</u>	<u>DESCRIPTION</u>	<u>PART#</u>	<u>QTY</u>
1	HOPPER	73402	1
2	SWING TUBE ASSEMBLY (SPLINED SHAFT)	73404	1
3	THRUST RING	73406	1
4	CUTTING RING	73407	1
5	WEAR PLATE (REVERSIBLE)	77852	1
6	ANTI CHIP RING	70047	2
7	PISTON COUPLING	73425	2
8	FLANGED BEARING	75494	1
9	BELL CRANK	73476	1
10	NUT SPACER	77706	1
11	HEX NUT 1-1/2"-12 SELF-LOCKING	71021	1
12	THRUST WASHER	75506	1
13	TIE ROD - CONCRETE CYLINDER	73463	4
14	CONCRETE CYLINDERS	73428	2
15	PISTON O-RING	74001	2
16	PISTON	70076	2
17	PISTON PLATE	70057	2
18	PISTON CUP	70048	2
19	FLANGE BEARING SEAL	75418	1
20	BRONZE SLEEVE FOR FLANGE BEARING	75496	1

SWING TUBE ASSEMBLY OUTLET



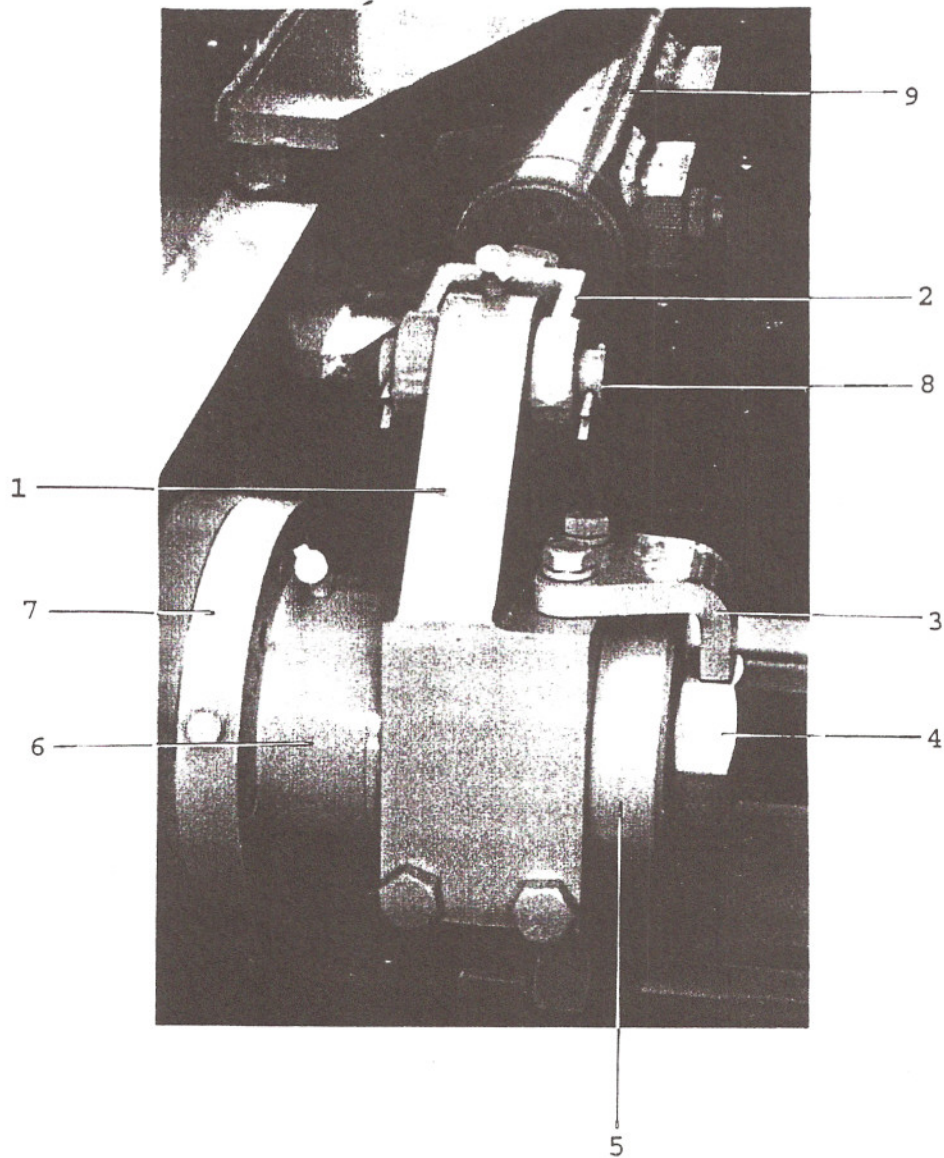
<u>ITEM</u>	<u>DESCRIPTION</u>	<u>PART#</u>	<u>QTY</u>
1	SWING TUBE ASSEMBLY	73404	1
2	OUTLET CASTING 5"	77491	1
3	OUTLET SEAL HOUSING	77760	1
4	OUTLET SEAL	77764	1
5	OUTLET SEAL	77765	1
6	GUIDE BAND	77763	1
7	CHROMED OUTLET	70042	1
8	BOLT	N/P/N	6
9	NUT	N/P/N	6
10	1/4-28 GREASE FITTING	N/P/N	1
11	O-RING	77762	1
12	O-RING	77761	1
13	EXTENSION FLANGE	73408	1

FRONT ENCLOSURE



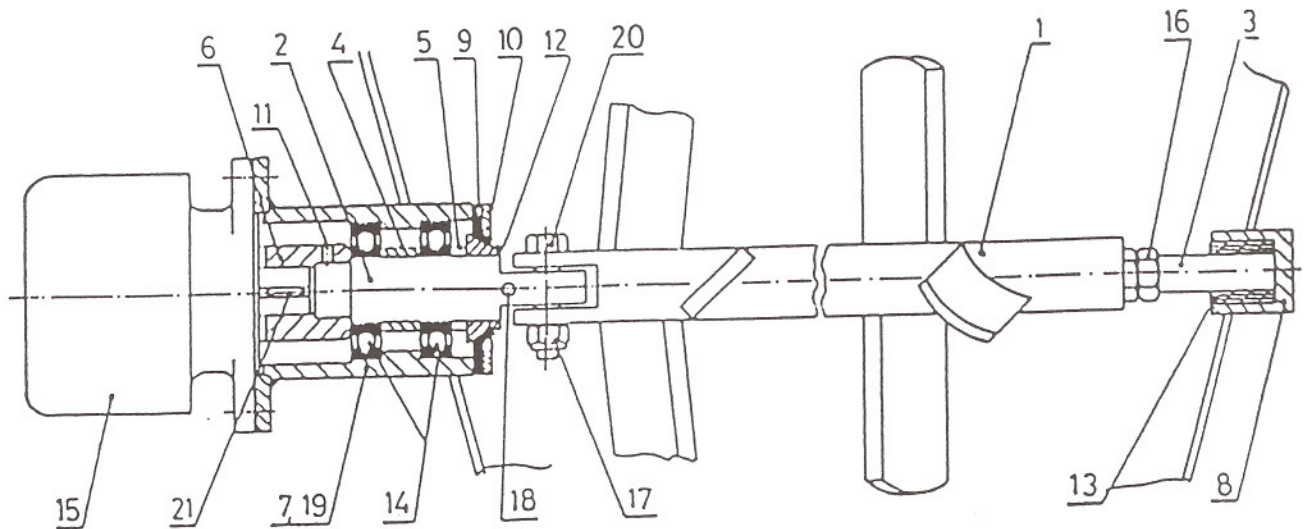
<u>ITEM</u>	<u>DESCRIPTION</u>	<u>PART#</u>	<u>QTY</u>
1	SUCTION FILTER GAUGE	77497	2
2	SUCTION FILTER	78380	2
3	ACCUMULATOR	74515	1
4	ACCUMULATOR - BLADDER	74516	1
5	SUCTION FILTER ELEMENT	73471	2

REAR HYDRAULIC TANK



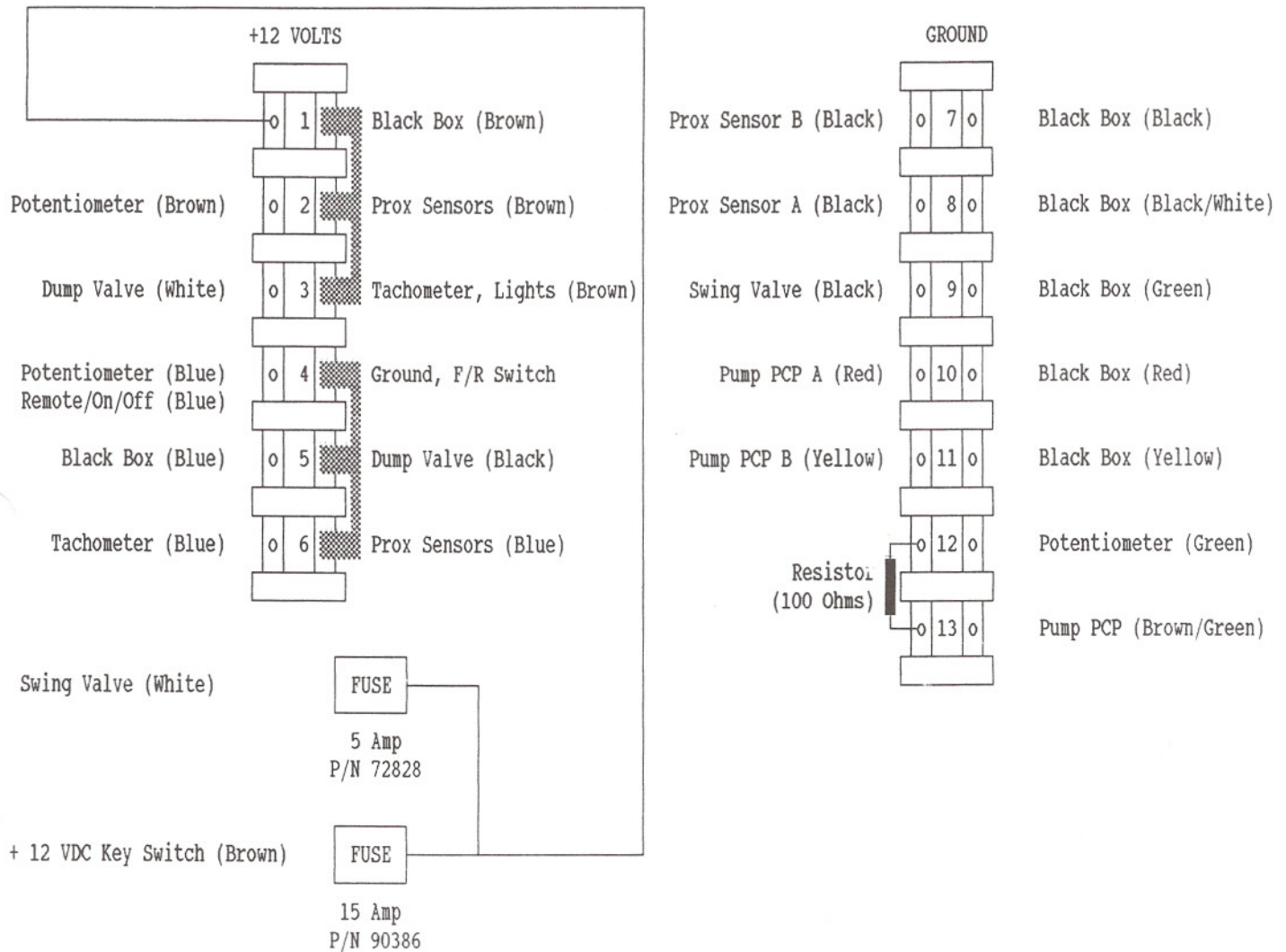
<u>ITEM</u>	<u>DESCRIPTION</u>	<u>PART#</u>	<u>QTY</u>
1	BELL CRANK	73476	1
2	CLEVIS WITH PIN 1"	75260	1
3	BOLT RETAINER SWING TUBE	73478	1
4	BOLT SWING TUBE	78060	1
5	WASHER SWING TUBE SHAFT END	77706	1
6	BRONZE SLEEVE (INSIDE FLANGE BEARING)	75496	1
7	FLANGE BEARING	75494	1
8	PIN ONLY	75338	1
9	SWING TUBE HYDRAULIC CYLINDER BEHIND CLEVIS	75087	1

AGITATOR ASSEMBLY



<u>ITEM</u>	<u>DESCRIPTION</u>	<u>PART#</u>
1	AGITATOR SHAFT WITH PADDLES	70202
2	SHAFT	70224
3	IDLER SHAFT	70214
4	SPACER LONG	70215
5	SPACER SHORT	70216
6	MOTOR COUPLING	70225
7	BEARING HOUSING	70223
8	IDLER BEARING HOUSING	70210
9	SEAL	70212
10	SEAL FLANGE	70211
11	SET SCREW	80374
12	WEAR RING	71018
13	IDLER BEARING	70219
14	BEARING SINGLE ROW BALL	71019
15	HYDRAULIC MOTOR	74529
16	HEX NUT M 20	80030
17	HEX NUT SELF-LOCKING 1/2-13	80019
18	SPRING PIN 3/16 X 1-3/4	80298
19	GREASE FITTING	80516
20	HEX HEAD CAP SCREW	80156
21	KEY	30216

ELECTRICAL DIAGRAM/JUNCTION BOX 3050HP & 3050HPS



HYDRAULIC SCHEMATIC - REED 3000

