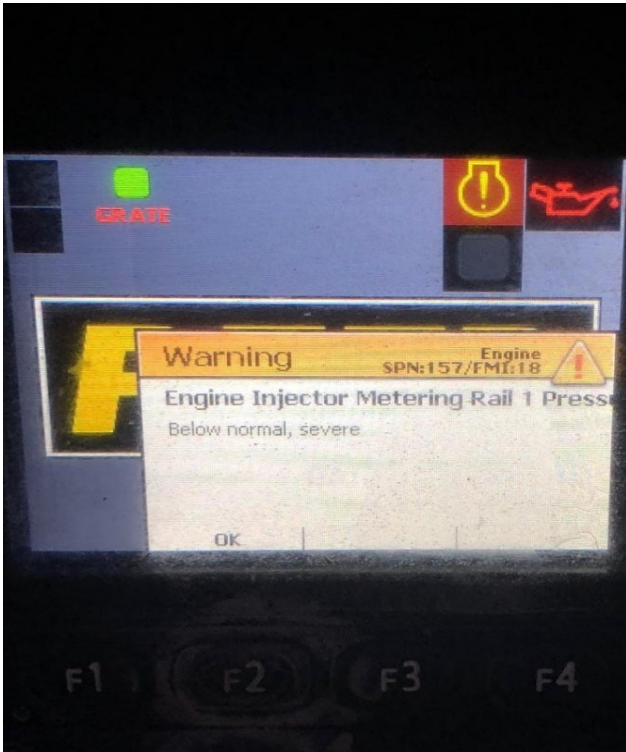


REED PLC Error Code Diagnostics

SPN: 157 "Engine Injector Metering Rail"

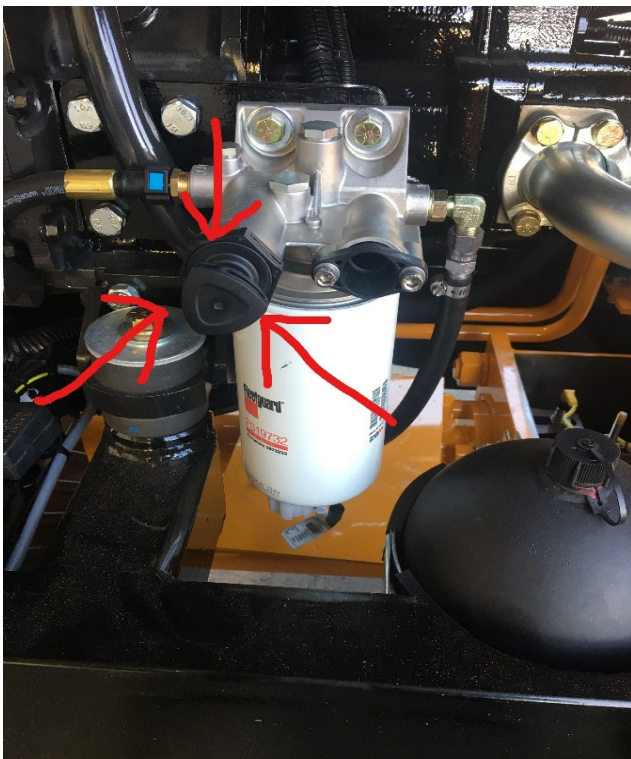
How to diagnose/fix/reset - directions and photos are below



Step 1:

When your pump cranks ,
but will not start and throws this code
"SPN: 157 Engine Injector Metering"

Before anything, make sure you have
fuel in the pump!



Step 2:

Go to the "Non Operator Side" of pump

Locate this filter and hand pump
shown in the photo to the left

(continued on next page...)



Step 3:

Rotate this knob counter-clockwise



Step 4:

Pull out and start to "pump" by pulling in and out.
(at first it might be "weak" or "easy", but keep pumping until it gets harder (pressure achieved) then push back in and lock into place



Step 5:

Wait 30 seconds
before attempting to start pump



Step 6:

Start pump!
If you are still having issues, please
contact your local REED Dealer or
REED at 909-287-2100
or
mike.newcomb@reedmfg.com