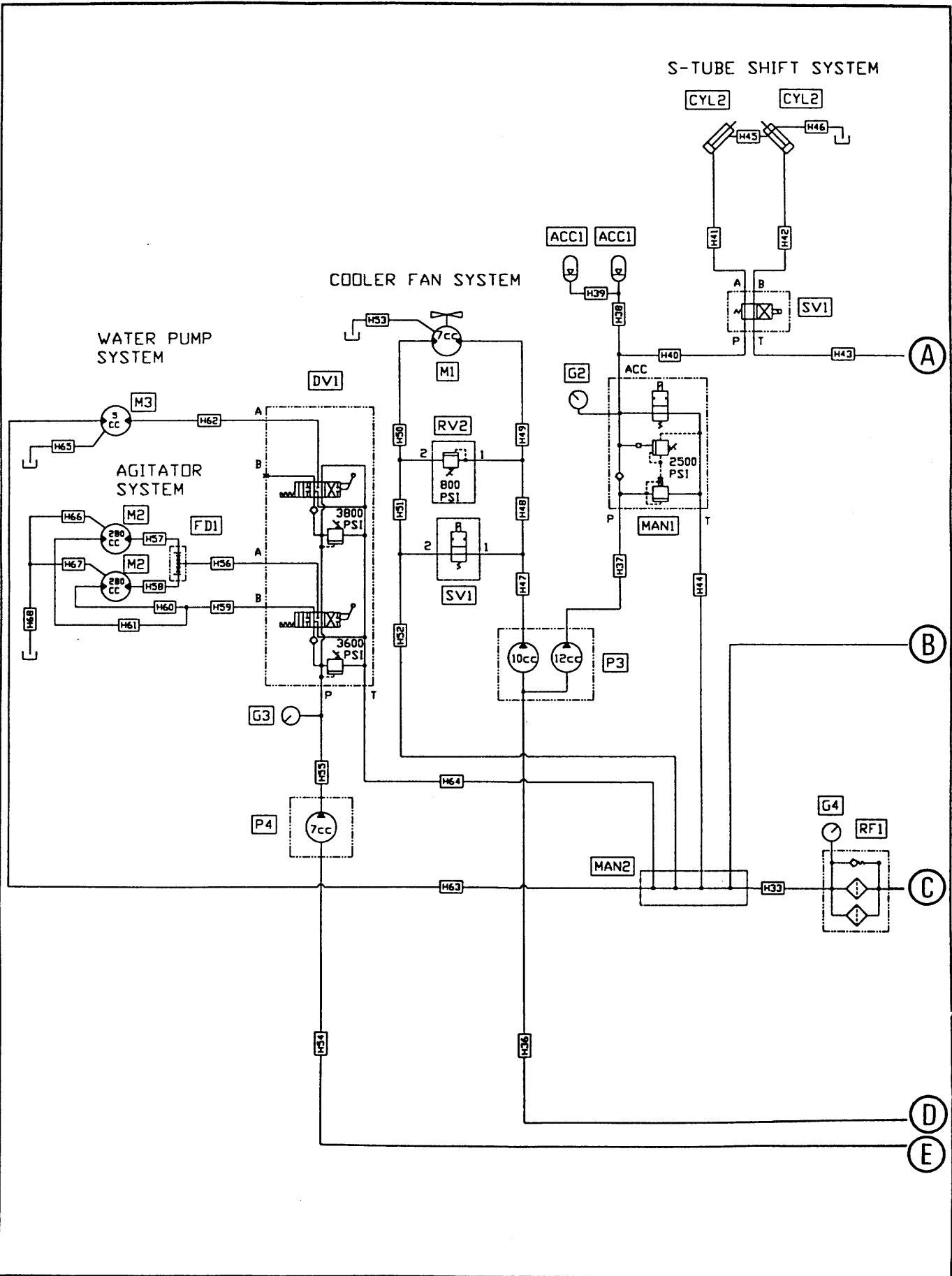
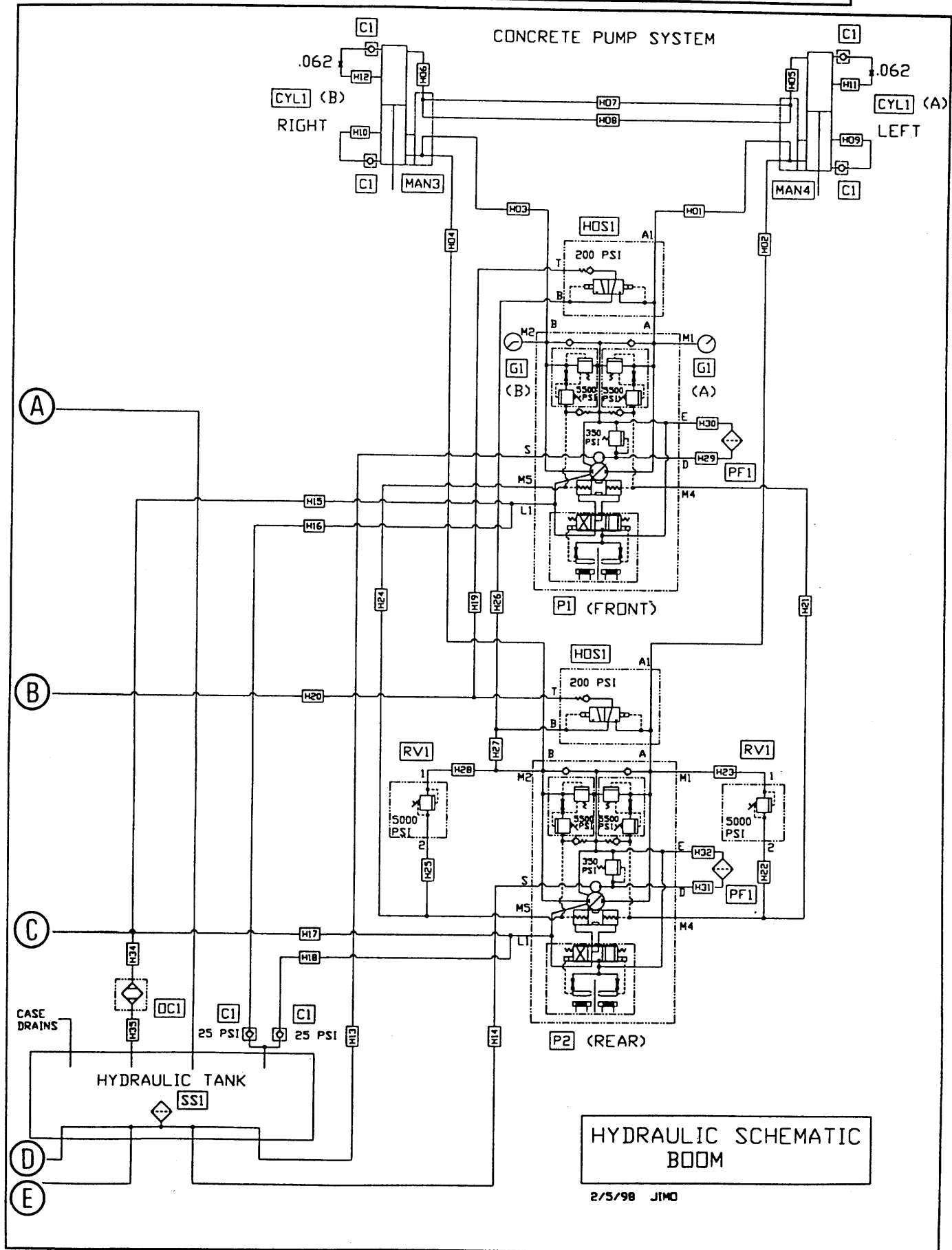


HYDRAULIC COMPONENTS

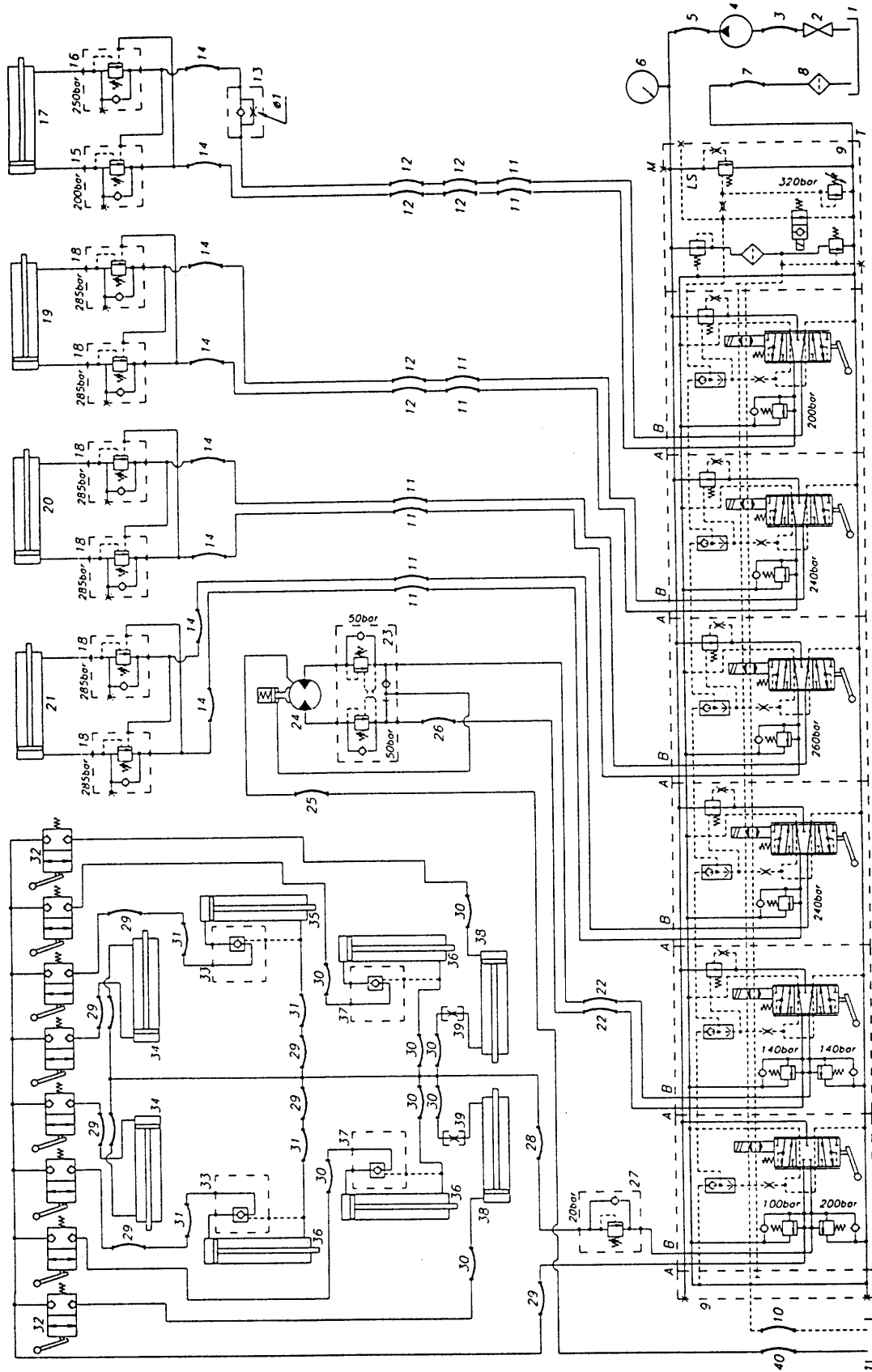
CODE NO.	REED'S PARTS NO.	DESCRIPTION	QTY
P1	800052	Front Main Pump	1
P2	800053	Rear Main Pump	1
P3	73156	Tandem Gear Pump	1
P4	78000	Gear Pump	1
CYL1	B-153001	Hydraulic Drive Cylinder	2
CYL2	x 90532	Swing Tube Shift Cylinder	2
M1		Hydraulic Cooler Fan Motor	1
M2	W-101240	Agitator Motor	2
M3	W-100121	Water Pump Motor	1
SV1	74991	Swing Tube Shift Solenoid Valve	1
SV2	800087	Hopper Grate Bypass Solenoid Valve	1
DV1	W-100124	Agitator / Water Pump Directional Valve	1
RV1	x 800074	Pressure Limiter Relief Valve	2
RV2	78973	Cooler Fan Motor Relief Valve	1
CI		Loop Line Check Valve	4
C2	of 79297	Return Check Valve	2
FD1	W-100159	Flow Divider	1
MAN1	72803	Unloader Manifold	1
MAN2	800243	Return Manifold	1
MAN3	800055	Cylinder Manifold - RH	1
MAN4	800056	Cylinder Manifold - LH	1
ACC1	x 74515	Accumulator	2
HOS1	x 72980	Hot Oil Shuttle Valve	2
OC1	800054	Hydraulic Oil Cooler	1
RF1	x 79245	Return Filter	1
PF1	> 73300	Pressure Filter	2
SS1	79247	Suction Strainer	1
G1	79831	Pressure Gage - 6,000 PSI	2
G2	x 70366	Pressure Gage - 3,000 PSI	1
G3	< 79831	Pressure Gage - 6,000 PSI	1
G4	79276	Pressure Gage - Return Filter	1





REVISION:

HYDRAULIC SCHEMATIC (BOOM AREA)



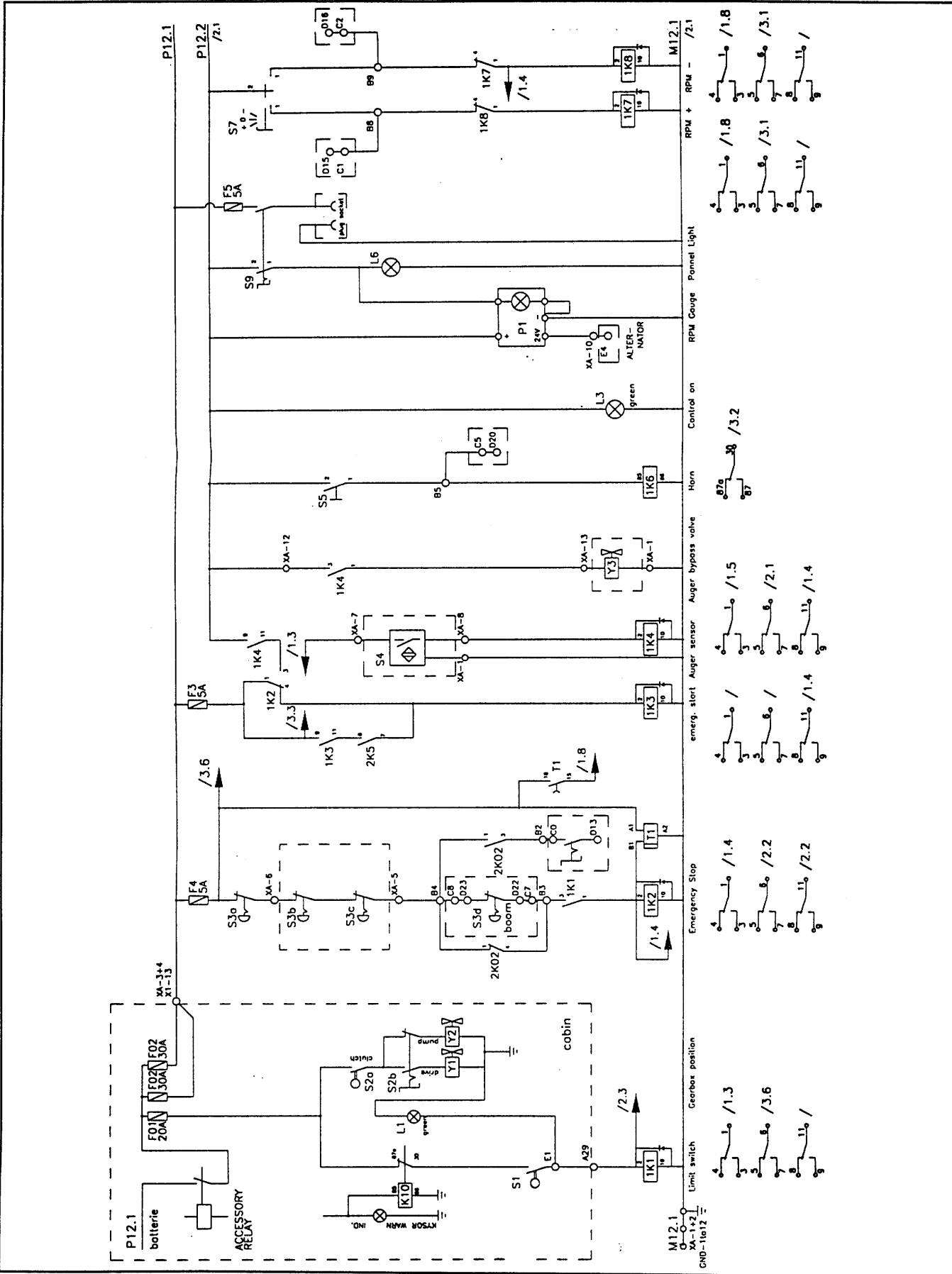
REVISION:

**HYDRAULIC SCHEMATIC
(BOOM AREA)**

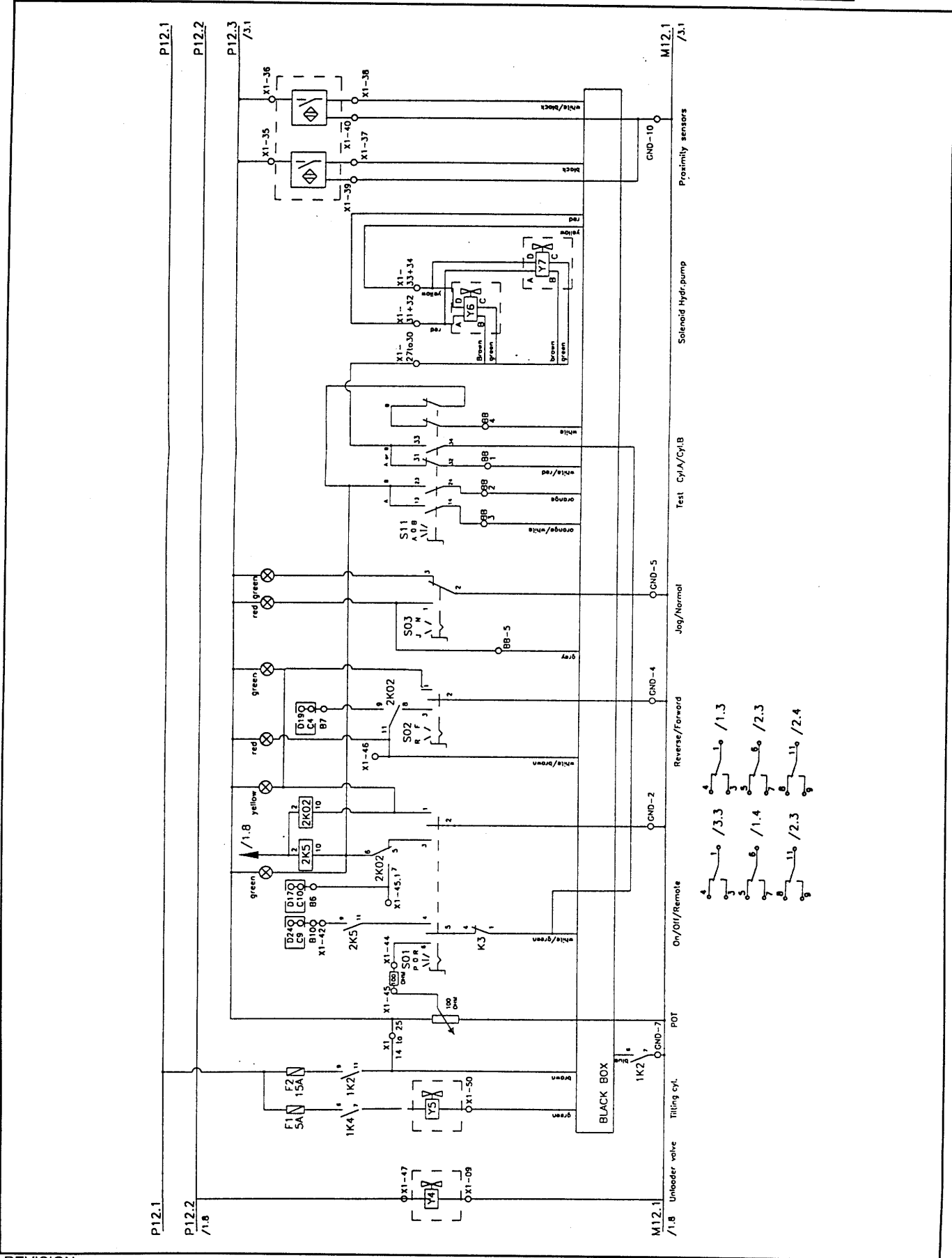
CODE NO.	REED'S PARTS NO.	DESCRIPTION	QTY
1		Hydraulic Oil Tank	1
2	C-WR000	Inlet Valve	1
3	C-FF1X0.001	Flexible Hose	1
4	C-MP000	Hydraulic Pump ✓	1
5	C-FF1X0.002	Flexible Hose	1
6	C-DM000	Pressure Gage	1
7	C-FF143.100	Flexible Hose	1
8	C-DF000	Discharge Hydraulic Filter ~	1
9	C-DD002	Distributor	1
10	C-FF142.260	Flexible Hose	1
11	C-FF122.440	Flexible Hose	8
12	C-FF122.125	Flexible Hose	6
13 ×	C-WL000.10	Flow Limiter Valve ✓	1
14	C-FF122.250	Flexible Hose	8
15 ×	C-WC100.200	Check Valve ✓	1
16 ✓	C-WC100.250	Check Valve ✓	1
17	C-3B4A	Hydraulic Piston	1
18 ×	C-WC100.285	Check Valve ✓	6
19	C-3B3A	Hydraulic Piston	1
20	C-3B2A	Hydraulic Piston	1
21	C-3B1A	Hydraulic Piston	1
22	C-FF122.230	Flexible Hose	2
23 ✓	C-WB100.050	Over Center Valve ✓	1
24	C-MI110.080	Hydraulic Motor ✓	1
25	C-FF101.080	Flexible Hose	1
26	C-FF101.045	Flexible Hose	1
27 ×	C-WS100.001	Sequence Valve For Stabilizer ✓	1
28	C-FF122.080	Flexible Hose	1
29	C-FF122.040	Flexible Hose	7
30	C-FF122.060	Flexible Hose	8
31	C-FF112.310	Flexible Hose	4
32	C-DE000	Flow Deviation Lever - Valve ✓	8
33 ×	C-WD100.000	Check Valve ✓	2
34	C-4K4B	Hydraulic Piston	2
35	C-4K5B	Hydraulic Piston	1
36	C-4L5B	Hydraulic Piston	3
37 +	C-WD100.000	Check Valve	2
38	C-3M3A	Hydraulic Piston	2
39 ×	C-WL001	Flow Limiter Valve	1
40	C-FF101.270	Flexible Hose	1

001

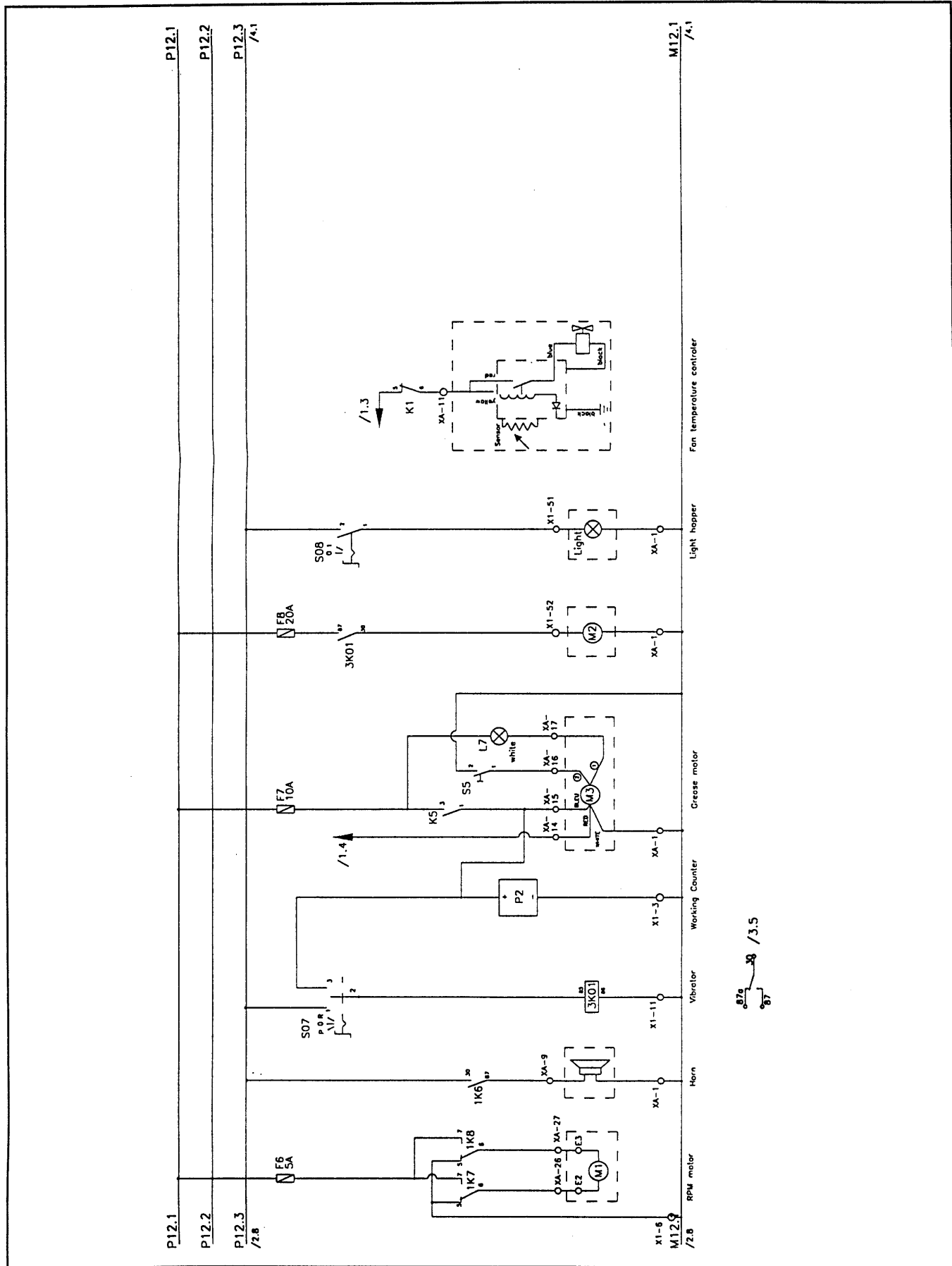
ELECTRICAL SCHEMATIC (CONTROL PANEL 1 OF 4)



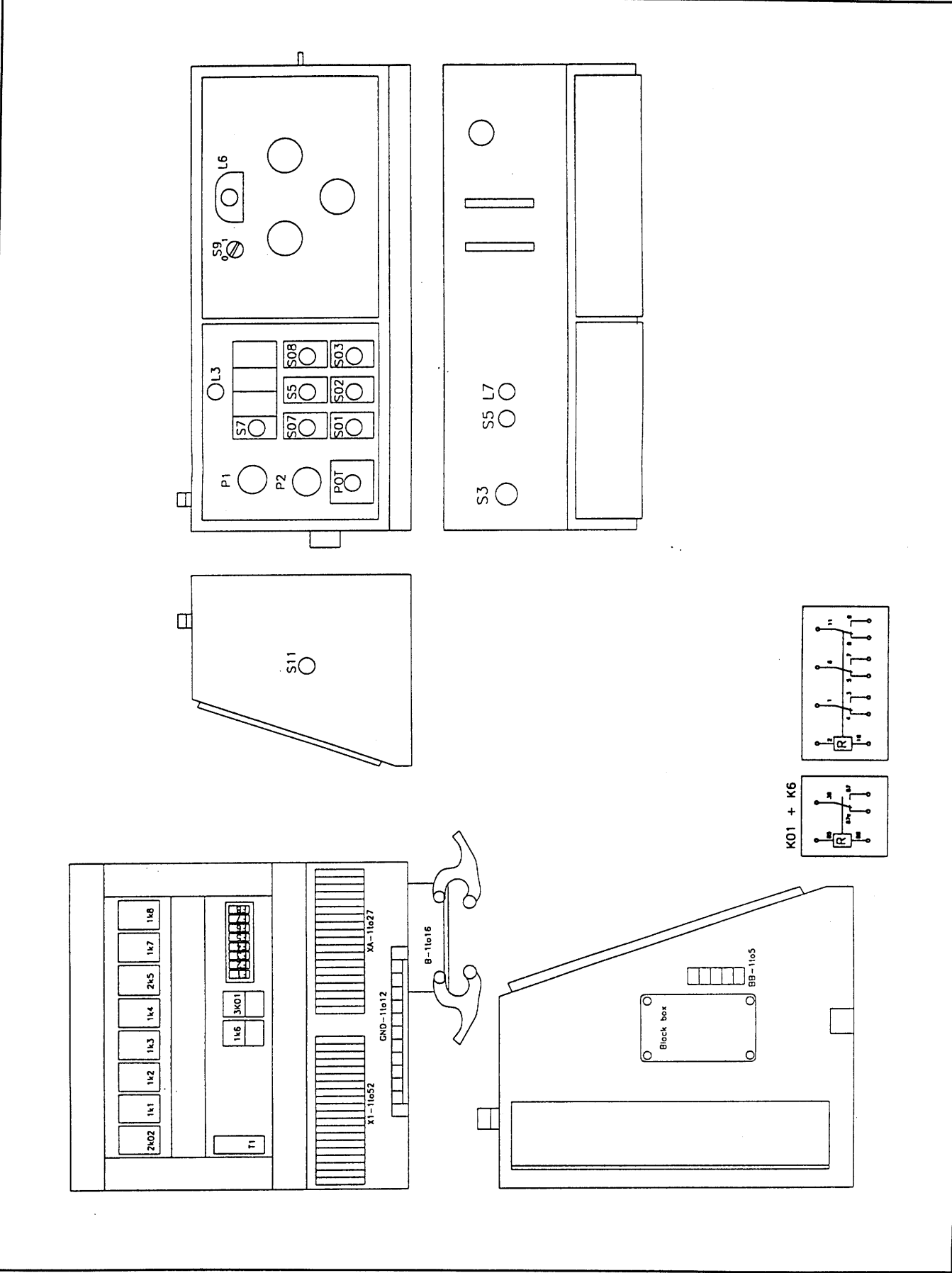
REVISION:



REVISION:



REVISION:



REED

CONCRETE PLACING
EQUIPMENT

SCHEMATICS

SCMTC

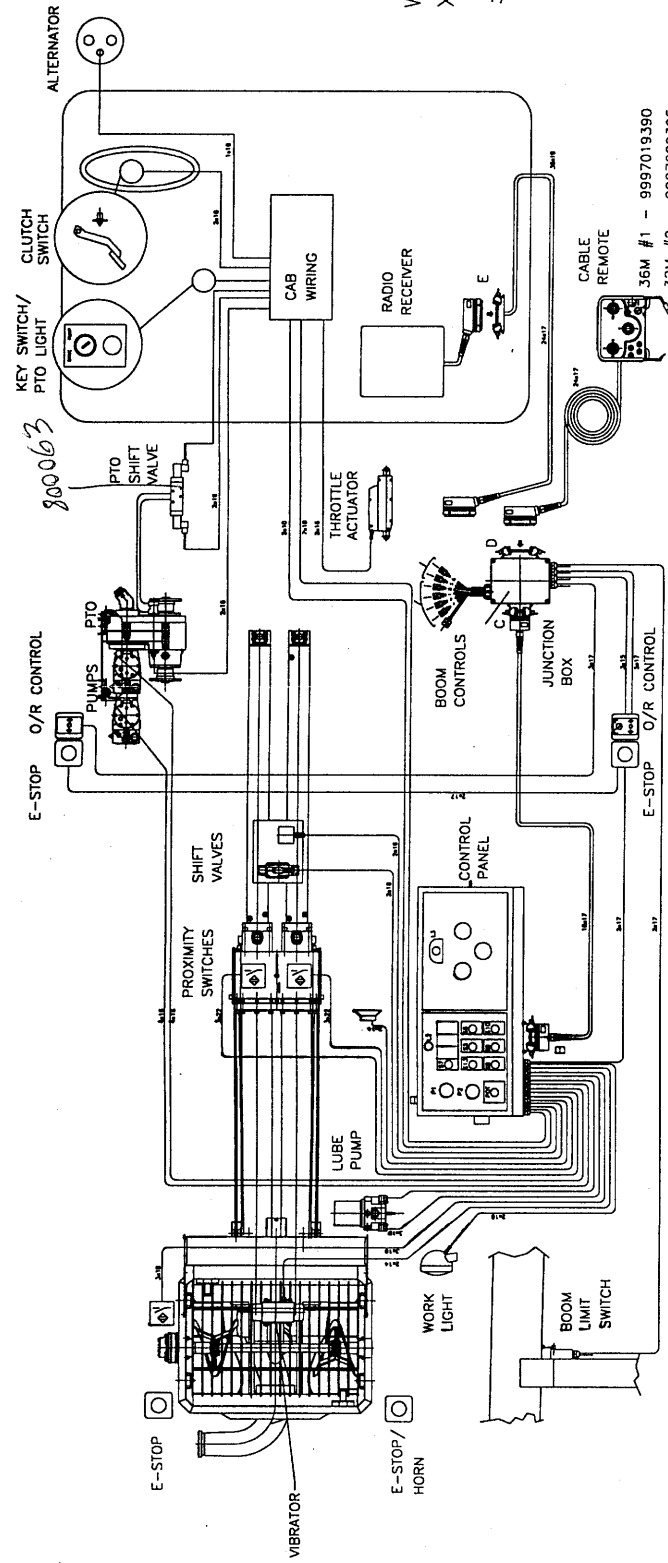
PAGE 10

THIS PAGE INTENTIONALLY LEFT BLANK.

REVISION:

**ELECTRICAL SCHEMATIC
(WIRING HARNESS)**

WIRING HARNESS
XT32 / ST36
3/27/98 JIMO



32M #1 - 9997019390
36M #2 - 9997519890

36M #1 - 9997019390
32M #2 - 9997009395

PLUG B

pin No.	wire No.	function
1	1	ground
2	2	RAM +
3	3	RAM -
4	4	emergency stop +
5	5	emergency stop -
6	6	horn
7	7	reverse
8	8	RAM +
9	9	RAM -
10	10	plus
11	11	free
12	12	engine start
13	13	free
14	14	free
15	15	free
16	16	free

PLUG C

pin No.	wire No.	function
1	1	RAM +
2	2	RAM -
3	3	pumping
4	4	reverse
5	5	horn
6	6	engine start
7	7	emergency stop +
8	8	emergency stop -
9	9	pot
10	10	pumping on
11	11	free
12	12	free
13	13	free
14	14	free
15	15	ground
16	16	plus

PLUG D

pin No.	wire No. cable	function
1	1	boom 1 up
2	2	boom 1 down
3	3	boom 2 up
4	4	boom 2 down
5	5	boom 3 up
6	6	boom 3 down
7	7	boom 4 up
8	8	boom 4 down
9	9	engine stop
10	10	ground
11	11	turn clockwise
12	12	turn anticlockwise
13	13	plus
14	14	RAM +
15	15	RAM -
16	16	RAM -
17	17	pumping on
18	18	pumping
19	19	reverse
20	20	horn
21	21	engine start
22	22	emergency stop
23	23	emergency stop +
24	24	pot

PLUG E

pin No.	wire No.	function
1	1	boom 1 up
2	2	boom 1 down
3	3	boom 2 up
4	4	boom 2 down
5	5	boom 3 up
6	6	boom 3 down
7	7	boom 4 up
8	8	boom 4 down
9	9	engine stop
10	10	ground
11	11	turn clockwise
12	12	turn anticlockwise
13	13	plus
14	14	RAM +
15	15	RAM -
16	16	RAM -
17	17	pumping on
18	18	pumping
19	19	reverse
20	20	horn
21	21	engine start
22	22	emergency stop
23	23	emergency stop +
24	24	pot

PLUG E

pin No.	wire No.	function
1	27	boom 1 up
2	28	boom 1 down
3	30	boom 2 up
4	31	boom 2 down
5	32	boom 3 up
6	33	boom 3 down
7	34	boom 4 up
8	35	boom 4 down
9	36	engine stop
10	37	ground
11	38	turn clockwise
12	39	turn anticlockwise
13	40	plus
14	41	RAM +
15	42	RAM -
16	43	RAM -
17	44	pumping on
18	45	pumping
19	46	reverse
20	47	horn
21	48	engine start
22	49	emergency stop
23	50	emergency stop +
24	51	pot

PLUG E

pin No.	wire No.	function
1	34	boom 1 up
2	33	boom 1 down
3	35	boom 2 up
4	36	boom 2 down
5	29	boom 3 up
6	30	boom 3 down
7	27	boom 4 up
8	28	boom 4 down
9	26	engine stop
10	9,12	ground
11	32	turn clockwise
12	31	turn anticlockwise
13	7	plus
14	25	pilot valve
15	11	RAM +
16	6	RAM -
17	13	RAM -
18	14	pumping on
19	14	pumping
20	8	reverse
21	21	horn
22	2,4,7,10,26	engine start
23	3	emergency stop
24	37	emergency stop +
25	37	pot

REVISION:



ELECTRICAL SCHEMATIC
(BOOM CONTROL CABLE)

#9997019390 36m#1
#9997009395 32m#2

#9998060190 32m#1
#9997519890 36m#2

BOOM J-BOX

CONTROL CABLE

RADIO RECEIVER

RADIO RECEIVER

PLUG 'D' FEM	WIRE NO.	WIRE COLOR	PLUG 'E' FEM	PLUG 'D' MALE
1	1	RED	1	1
2	2	BLK	2	2
3	3	YEL	3	3
4	4	BRN	4	4
5	5	BLU	5	5
6	6	DRN	6	6
7	7	BLK/RED	7	7
8	8	YEL/RED	8	8
9	9	YEL/BLK	9	9
10	10	YEL/DRN	10	10
11	11	YEL/BLU	11	11
12	12	BRN/BLK	12	12
13	13	BRN/RED	13	13
14	14	BRN/BLU	14	14
15	15	DRN/BLU	15	15
16	16	RED/DRN	16	16
17	17	BLK/TAN	17	17
18	18	DRN/BLK	18	18
19	19	DRN/RED	19	19
20	20	BLU/DRN	20	20
21	21	RED/BLU	21	21
22	22	RED/BLK	22	22
23	23	BLU/BLK	23	23
24	24	BLU/RED	24	24
	25	BLK/BLU		
				GND

WIRE NO.	PLUG 'E' MALE	WIRE NO.
27	1	27
28	2	28
40	3	40
39	4	39
32	5	32
31	6	31
34	7	34
33	8	33
9,12	9	9,12
29	10	29
30	11	30
1	12	1
25	13	25
11	14	11
6	15	6
13	16	13
14	17	14
8	18	8
2,4,7,10,26	19	2,4,7,10,26
3	20	3
35	21	35
	22	
	23	
	24	

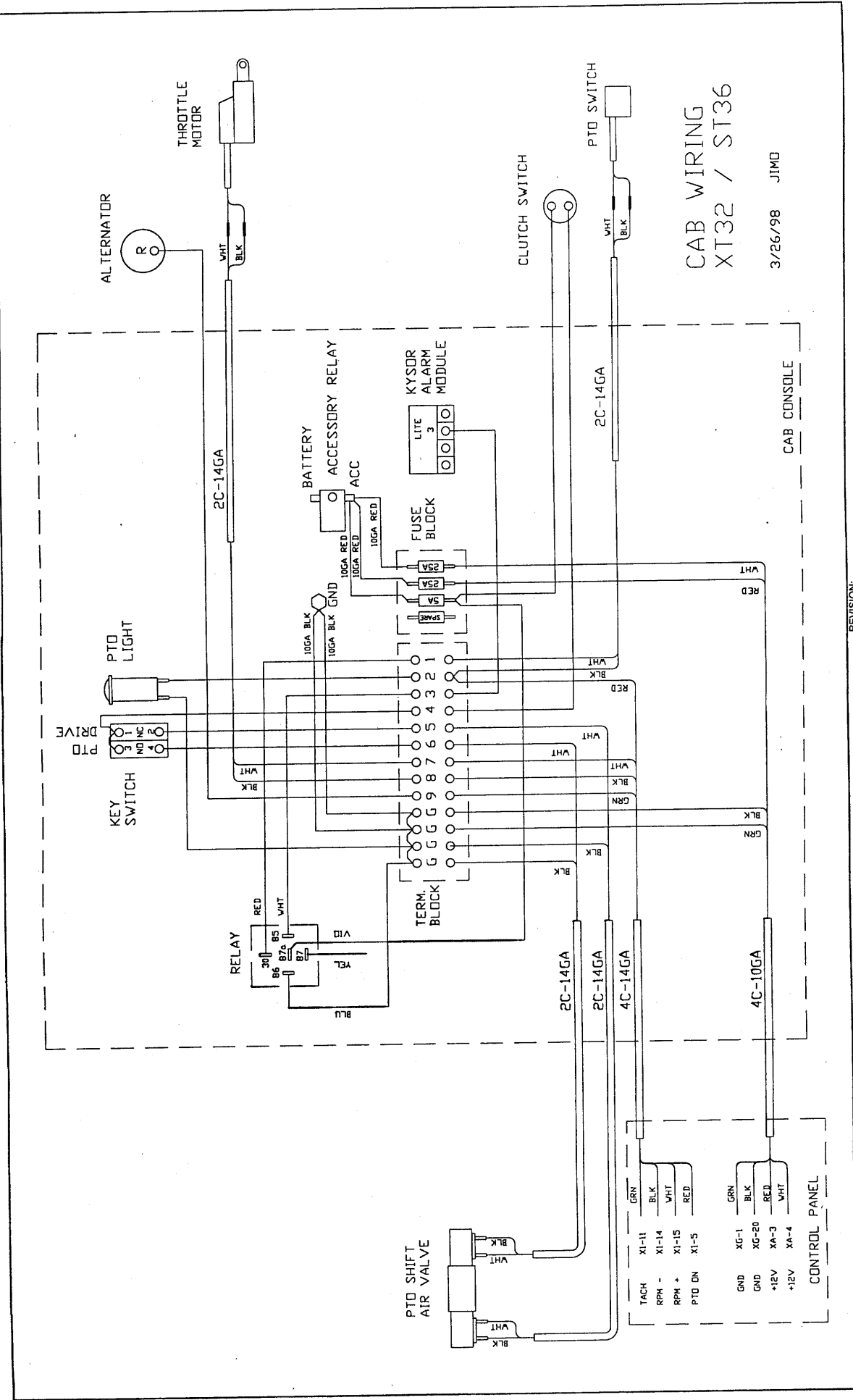
PLUG 'E' MALE	WIRE NO.
1	34
2	33
3	35
4	36
5	29
6	30
7	27
8	28
9	9,12
10	GROUND
11	ROTATE CV
12	ROTATE CCW
13	+12V
14	PILOT VALVE
15	RPM +
16	RPM -
17	PUMP ON
18	REVERSE
19	HORN
20	2,4,7,10,26
21	8
22	E-STOP
23	E-STOP +
24	POT
	37

PLUG 'E' MALE	WIRE NO.
1	34
2	33
3	35
4	36
5	29
6	30
7	27
8	28
9	9,12
10	GROUND
11	ROTATE CV
12	ROTATE CCW
13	+12V
14	PILOT VALVE
15	RPM +
16	RPM -
17	PUMP ON
18	REVERSE
19	HORN
20	2,4,7,10,26
21	8
22	E-STOP
23	E-STOP +
24	POT
	37

BOOM CONTROL CABLE
XT32 / ST36

3/19/98 JIMD

REVISION:



CAB WIRING
XT32 / ST36

3/26/98 JIMO

REVISION:

